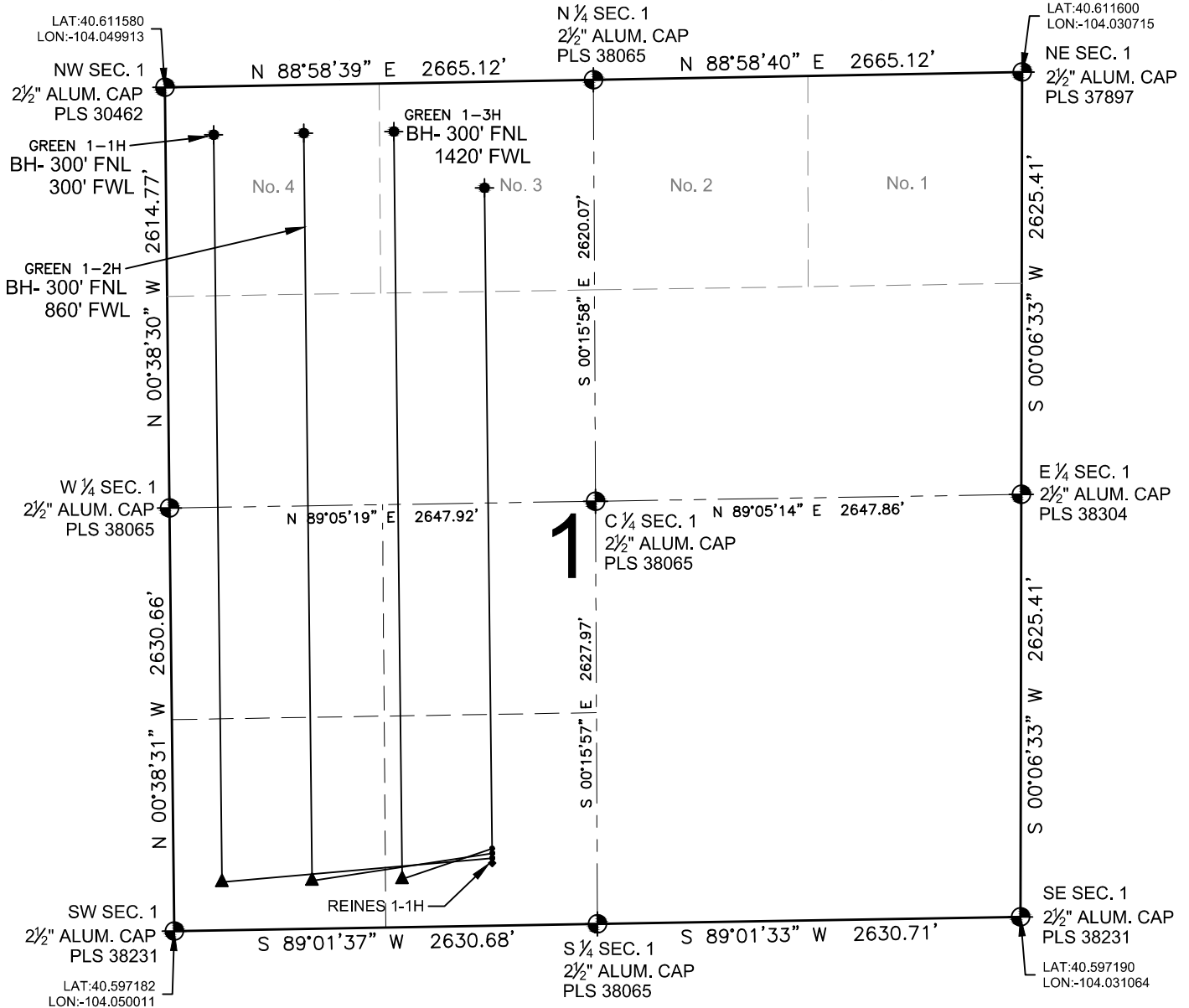


GREEN 1-1H MULTI-WELL PLAN

SECTION 1, TOWNSHIP 7 NORTH, RANGE 60 WEST, 6TH P.M.



LEGEND

- = EXISTING MONUMENT
- = PROPOSED WELL
- ▲ = LANDING POINT
- ◆ = BOTTOM HOLE
- ◆ = EXISTING WELL
- BH= BOTTOM HOLE

NOTES:

GREEN 1-1H TO BE AT 420' FSL, 1982' FWL.
 BOTTOM HOLE AT 300' FNL & 300' FWL.
 GREEN 1-2H TO BE AT 450' FSL, 1982' FWL.
 BOTTOM HOLE AT 300' FNL & 860' FWL.
 GREEN 1-3H TO BE AT 480' FSL, 1982' FWL.
 BOTTOM HOLE AT 300' FNL & 1420' FWL.
 REINES 1-1H IS 390' FSL & 1981' FWL.
 BOTTOM HOLE AT 660' FNL & 1980' FWL.

PREPARED BY:



RED HAWK PETROLEUM, LLC

FIELD DATE:
04-15-14

DRAWING DATE:
04-24-14

SURFACE LOCATION:

SE 1/4 SW 1/4, SEC. 1, T7N, R60W, 6TH P.M.
 WELD COUNTY, COLORADO

