

KERR-MCGEE OIL & GAS ONSHORE LP

Location: COLORADO Slot: SLOT#26 NRC 3N-4HZ (350'FSL & 1950'FWL, SEC.9)
Field: WELD COUNTY (KERR MCGEE) Well: NRC 3N-4HZ
Facility: SEC.09-T1N-R67W Wellbore: NRC 3N-4HZ PWB

Plot reference wellpath is NRC 3N-4HZ (REV-B.0) PWP

True vertical depths are referenced to XTREME 24 (16' RKB) (RKB)

Grid System: NAD83 / Lambert Colorado SP, Northern Zone (501), US feet

Measured depths are referenced to XTREME 24 (16' RKB) (RKB)

North Reference: True north

XTREME 24 (16' RKB) (RKB) to Mean Sea Level: 5067 feet

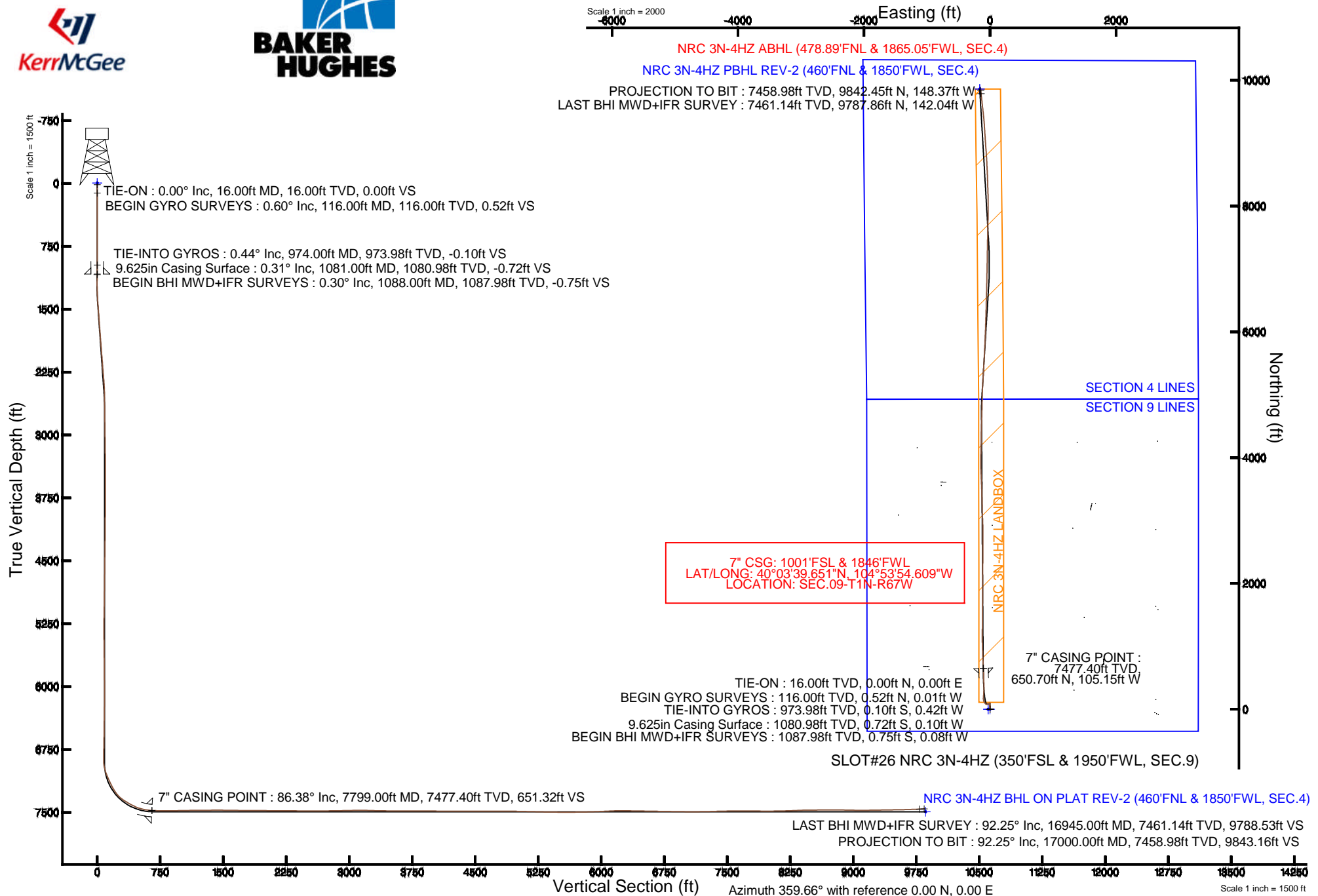
Scale: True distance

Mean Sea Level to Mud line (At Slot: SLOT#26 NRC 3N-4HZ (350'FSL & 1950'FWL, SEC.9)): 0 feet

Depths are in feet

Coordinates are in feet referenced to Slot.

Created by: wilsjef02 on 4/28/2014





Actual Wellpath Report

NRC 3N-4HZ AWP

Page 1 of 6



REFERENCE WELLPATH IDENTIFICATION			
Operator	KERR-MCGEE OIL & GAS ONSHORE LP	Slot	SLOT#26 NRC 3N-4HZ (350'FSL & 1950'FWL, SEC.9)
Area	COLORADO	Well	NRC 3N-4HZ
Field	WELD COUNTY (KERR MCGEE)	Wellbore	NRC 3N-4HZ AWB
Facility	SEC.09-T1N-R67W		

REPORT SETUP INFORMATION			
Projection System	NAD83 / Lambert Colorado SP, Northern Zone (501), US feet	Software System	WellArchitect® 4.0.0
North Reference	True	User	Wilsjef02
Scale	0.999962	Report Generated	4/28/2014 at 2:54:12 PM
Convergence at slot	n/a	Database/Source file	WellArchitectDB/NRC_3N-4HZ_AWB.xml

WELLPATH LOCATION						
	Local coordinates		Grid coordinates		Geographic coordinates	
	North[ft]	East[ft]	Easting[US ft]	Northing[US ft]	Latitude	Longitude
Slot Location	-3266.93	-1619.58	3168469.16	1264993.87	40°03'33.221"N	104°53'53.257"W
Facility Reference Pt			3170066.25	1268271.69	40°04'05.506"N	104°53'32.428"W
Field Reference Pt			3197771.84	1268891.29	40°04'09.600"N	104°47'36.000"W

WELLPATH DATUM			
Calculation method	Minimum curvature	XTREME 24 (16' RKB) (RKB) to Facility Vertical Datum	5067.00ft
Horizontal Reference Pt	Slot	XTREME 24 (16' RKB) (RKB) to Mean Sea Level	5067.00ft
Vertical Reference Pt	XTREME 24 (16' RKB) (RKB)	XTREME 24 (16' RKB) (RKB) to Mud Line at Slot (SLOT#26 NRC 3N-4HZ (350'FSL & 1950'FWL, SEC.9))	5067.00ft
MD Reference Pt	XTREME 24 (16' RKB) (RKB)	Section Origin	N 0.00, E 0.00 ft
Field Vertical Reference	Mean Sea Level	Section Azimuth	359.14°



Actual Wellpath Report

NRC 3N-4HZ AWP

Page 2 of 6



REFERENCE WELLPATH IDENTIFICATION			
Operator	KERR-MCGEE OIL & GAS ONSHORE LP	Slot	SLOT#26 NRC 3N-4HZ (350'FSL & 1950'FWL, SEC.9)
Area	COLORADO	Well	NRC 3N-4HZ
Field	WELD COUNTY (KERR MCGEE)	Wellbore	NRC 3N-4HZ AWB
Facility	SEC.09-T1N-R67W		

WELLPATH DATA (127 stations) † = interpolated/extrapolated station										
MD [ft]	Inclination [°]	Azimuth [°]	TVD [ft]	Vert Sect [ft]	North [ft]	East [ft]	Latitude	Longitude	DLS [°/100ft]	Comments
0.00†	0.000	359.330	0.00	0.00	0.00	0.00	40°03'33.221"N	104°53'53.257"W	0.00	
16.00	0.000	359.330	16.00	0.00	0.00	0.00	40°03'33.221"N	104°53'53.257"W	0.00	TIE-ON
116.00	0.600	359.330	116.00	0.52	0.52	-0.01	40°03'33.226"N	104°53'53.257"W	0.60	BEGIN GYRO SURVEYS
216.00	0.750	136.880	216.00	0.56	0.57	0.44	40°03'33.227"N	104°53'53.251"W	1.26	
316.00	0.510	229.480	315.99	-0.21	-0.20	0.54	40°03'33.219"N	104°53'53.250"W	0.93	
416.00	0.560	3.620	415.99	0.00	0.00	0.24	40°03'33.221"N	104°53'53.254"W	0.99	
516.00	0.570	188.020	515.99	-0.01	0.00	0.20	40°03'33.221"N	104°53'53.254"W	1.13	
616.00	0.660	307.590	615.98	-0.14	-0.14	-0.33	40°03'33.220"N	104°53'53.261"W	1.06	
716.00	0.370	111.760	715.98	0.09	0.09	-0.48	40°03'33.222"N	104°53'53.263"W	1.02	
816.00	0.640	277.310	815.98	0.05	0.04	-0.74	40°03'33.221"N	104°53'53.266"W	1.00	
916.00	0.570	90.420	915.98	0.12	0.11	-0.79	40°03'33.222"N	104°53'53.267"W	1.21	
974.00	0.440	157.340	973.98	-0.10	-0.10	-0.42	40°03'33.220"N	104°53'53.262"W	0.98	TIE-INTO GYROS
1088.00	0.300	143.720	1087.98	-0.75	-0.75	-0.08	40°03'33.214"N	104°53'53.258"W	0.14	BEGIN BHI MWD+IFR SURVEYS
1182.00	0.540	231.920	1181.97	-1.21	-1.22	-0.28	40°03'33.209"N	104°53'53.261"W	0.65	
1276.00	1.640	4.530	1275.96	-0.14	-0.15	-0.52	40°03'33.220"N	104°53'53.264"W	2.18	
1370.00	3.790	3.010	1369.85	4.30	4.29	-0.25	40°03'33.263"N	104°53'53.260"W	2.29	
1464.00	4.380	5.620	1463.61	10.96	10.97	0.26	40°03'33.329"N	104°53'53.254"W	0.66	
1653.00	4.010	9.860	1652.11	24.63	24.66	2.10	40°03'33.465"N	104°53'53.230"W	0.26	
1843.00	4.620	348.690	1841.58	38.68	38.71	1.74	40°03'33.604"N	104°53'53.235"W	0.89	
2029.00	4.510	346.320	2026.99	53.18	53.16	-1.46	40°03'33.746"N	104°53'53.276"W	0.12	
2216.00	4.720	346.130	2213.38	67.84	67.77	-5.04	40°03'33.891"N	104°53'53.322"W	0.11	
2309.00	4.740	349.370	2306.07	75.36	75.27	-6.67	40°03'33.965"N	104°53'53.343"W	0.29	
2401.00	3.780	8.910	2397.81	82.09	82.00	-6.90	40°03'34.031"N	104°53'53.346"W	1.88	
2495.00	1.680	13.840	2491.70	86.48	86.40	-6.09	40°03'34.075"N	104°53'53.335"W	2.25	
2588.00	0.620	347.260	2584.68	88.29	88.21	-5.88	40°03'34.093"N	104°53'53.333"W	1.25	
2866.00	0.820	5.470	2862.66	91.74	91.66	-6.02	40°03'34.127"N	104°53'53.334"W	0.11	
3234.00	0.790	32.570	3230.63	96.47	96.42	-4.40	40°03'34.174"N	104°53'53.314"W	0.10	
3601.00	0.300	118.030	3597.61	98.12	98.10	-2.19	40°03'34.190"N	104°53'53.285"W	0.22	
3969.00	0.430	154.160	3965.61	96.40	96.40	-0.74	40°03'34.174"N	104°53'53.267"W	0.07	
4429.00	0.770	195.210	4425.58	91.87	91.87	-0.80	40°03'34.129"N	104°53'53.267"W	0.11	
4861.00	1.070	228.860	4857.53	86.47	86.41	-4.60	40°03'34.075"N	104°53'53.316"W	0.14	
5116.00	1.240	210.800	5112.48	82.59	82.48	-7.80	40°03'34.036"N	104°53'53.357"W	0.16	
5201.00	1.580	212.200	5197.45	80.82	80.70	-8.90	40°03'34.018"N	104°53'53.371"W	0.40	
5287.00	1.580	278.760	5283.43	80.02	79.87	-10.70	40°03'34.010"N	104°53'53.395"W	2.02	
5372.00	0.670	334.920	5368.41	80.67	80.50	-12.07	40°03'34.017"N	104°53'53.412"W	1.56	
5713.00	0.780	323.810	5709.38	84.39	84.18	-14.29	40°03'34.053"N	104°53'53.441"W	0.05	
6054.00	0.420	318.460	6050.36	87.23	86.99	-16.49	40°03'34.081"N	104°53'53.469"W	0.11	
6139.00	1.470	277.700	6135.35	87.63	87.37	-17.77	40°03'34.084"N	104°53'53.486"W	1.39	
6224.00	3.460	248.200	6220.27	86.87	86.56	-21.24	40°03'34.076"N	104°53'53.530"W	2.70	
6309.00	2.900	255.270	6305.14	85.44	85.06	-25.70	40°03'34.062"N	104°53'53.587"W	0.80	
6395.00	3.060	250.500	6391.02	84.18	83.74	-29.96	40°03'34.049"N	104°53'53.642"W	0.34	
6480.00	2.510	257.650	6475.92	83.09	82.59	-33.92	40°03'34.037"N	104°53'53.693"W	0.76	
6565.00	4.160	260.780	6560.78	82.27	81.70	-38.78	40°03'34.028"N	104°53'53.756"W	1.95	
6650.00	3.660	252.550	6645.58	81.05	80.39	-44.41	40°03'34.015"N	104°53'53.828"W	0.88	
6821.00	2.770	240.890	6816.31	77.53	76.74	-53.23	40°03'33.979"N	104°53'53.942"W	0.64	

Actual Wellpath Report

NRC 3N-4HZ AWP

Page 3 of 6

REFERENCE WELLPATH IDENTIFICATION

Operator	KERR-MCGEE OIL & GAS ONSHORE LP	Slot	SLOT#26 NRC 3N-4HZ (350'FSL & 1950'FWL, SEC.9)
Area	COLORADO	Well	NRC 3N-4HZ
Field	WELD COUNTY (KERR MCGEE)	Wellbore	NRC 3N-4HZ AWP
Facility	SEC.09-T1N-R67W		

WELLPATH DATA (127 stations) † = interpolated/extrapolated station

MD [ft]	Inclination [°]	Azimuth [°]	TVD [ft]	Vert Sect [ft]	North [ft]	East [ft]	Latitude	Longitude	DLS [°/100ft]	Comments
6906.00	5.980	290.590	6901.08	78.18	77.30	-59.17	40°03'33.985"N	104°53'54.018"W	5.52	
6991.00	19.980	318.040	6983.76	90.82	89.73	-73.11	40°03'34.108"N	104°53'54.197"W	17.55	
7077.00	25.240	331.330	7063.17	118.14	116.78	-91.75	40°03'34.375"N	104°53'54.437"W	8.49	
7162.00	26.150	350.040	7139.89	152.73	151.18	-103.71	40°03'34.715"N	104°53'54.591"W	9.57	
7247.00	29.120	7.020	7215.30	191.78	190.23	-104.42	40°03'35.101"N	104°53'54.600"W	9.87	
7332.00	38.340	2.760	7285.93	238.69	237.20	-100.61	40°03'35.565"N	104°53'54.551"W	11.19	
7417.00	55.090	1.910	7344.00	300.25	298.80	-98.17	40°03'36.174"N	104°53'54.519"W	19.72	
7503.00	59.750	359.120	7390.30	372.66	371.24	-97.56	40°03'36.890"N	104°53'54.512"W	6.07	
7588.00	65.620	359.030	7429.29	448.15	446.71	-98.78	40°03'37.636"N	104°53'54.527"W	6.91	
7673.00	74.440	358.600	7458.29	527.96	526.51	-100.44	40°03'38.424"N	104°53'54.549"W	10.39	
7759.00	84.290	357.470	7474.15	612.36	610.87	-103.35	40°03'39.258"N	104°53'54.586"W	11.53	
7799.00†	86.379	357.352	7477.40	652.21	650.70	-105.15	40°03'39.651"N	104°53'54.609"W	5.23	7" CASING POINT
7844.00	88.730	357.220	7479.32	697.14	695.60	-107.28	40°03'40.095"N	104°53'54.637"W	5.23	
7929.00	89.780	356.750	7480.42	782.07	780.48	-111.75	40°03'40.934"N	104°53'54.694"W	1.35	
8015.00	90.300	357.610	7480.36	868.02	866.37	-115.98	40°03'41.783"N	104°53'54.749"W	1.17	
8100.00	90.830	358.410	7479.53	953.00	951.32	-118.93	40°03'42.622"N	104°53'54.787"W	1.13	
8185.00	91.070	358.560	7478.12	1037.98	1036.27	-121.18	40°03'43.462"N	104°53'54.815"W	0.33	
8270.00	91.160	359.480	7476.46	1122.97	1121.25	-122.63	40°03'44.301"N	104°53'54.834"W	1.09	
8356.00	90.000	0.680	7475.59	1208.95	1207.24	-122.51	40°03'45.151"N	104°53'54.833"W	1.94	
8526.00	90.920	0.490	7474.23	1378.89	1377.22	-120.77	40°03'46.831"N	104°53'54.810"W	0.55	
8611.00	89.410	0.430	7473.98	1463.86	1462.22	-120.09	40°03'47.671"N	104°53'54.802"W	1.78	
8782.00	89.070	0.380	7476.25	1634.80	1633.20	-118.88	40°03'49.361"N	104°53'54.786"W	0.20	
8867.00	89.320	1.150	7477.44	1719.76	1718.18	-117.75	40°03'50.200"N	104°53'54.771"W	0.95	
8952.00	90.060	0.830	7477.90	1804.71	1803.17	-116.28	40°03'51.040"N	104°53'54.753"W	0.95	
9037.00	89.870	359.700	7477.96	1889.70	1888.16	-115.89	40°03'51.880"N	104°53'54.748"W	1.35	
9122.00	88.980	0.220	7478.81	1974.68	1973.16	-115.95	40°03'52.720"N	104°53'54.748"W	1.21	
9293.00	90.240	359.940	7479.97	2145.65	2144.15	-115.71	40°03'54.410"N	104°53'54.745"W	0.75	
9385.00	89.750	0.330	7479.98	2237.64	2236.15	-115.49	40°03'55.319"N	104°53'54.742"W	0.68	
9477.00	88.760	0.440	7481.18	2329.61	2328.14	-114.87	40°03'56.228"N	104°53'54.734"W	1.08	
9661.00	89.840	0.410	7483.42	2513.54	2512.12	-113.51	40°03'58.046"N	104°53'54.717"W	0.59	
9844.00	90.640	359.470	7482.66	2696.52	2695.11	-113.70	40°03'59.855"N	104°53'54.719"W	0.67	
10028.00	90.920	0.100	7480.15	2880.49	2879.09	-114.39	40°04'01.673"N	104°53'54.728"W	0.37	
10120.00	91.410	357.910	7478.28	2972.46	2971.05	-115.99	40°04'02.582"N	104°53'54.749"W	2.44	
10212.00	90.920	357.730	7476.41	3064.42	3062.97	-119.49	40°04'03.490"N	104°53'54.794"W	0.57	
10304.00	89.590	358.270	7476.00	3156.40	3154.91	-122.70	40°04'04.398"N	104°53'54.835"W	1.56	
10396.00	88.020	358.960	7477.92	3248.37	3246.86	-124.92	40°04'05.307"N	104°53'54.864"W	1.86	
10488.00	88.820	358.390	7480.46	3340.33	3338.80	-127.05	40°04'06.216"N	104°53'54.891"W	1.07	
10580.00	89.440	358.290	7481.86	3432.31	3430.75	-129.71	40°04'07.124"N	104°53'54.925"W	0.68	
10764.00	90.180	357.570	7482.47	3616.27	3614.62	-136.36	40°04'08.941"N	104°53'55.011"W	0.56	
10856.00	88.670	357.180	7483.39	3708.22	3706.52	-140.57	40°04'09.850"N	104°53'55.065"W	1.70	
10948.00	90.490	357.740	7484.06	3800.17	3798.42	-144.65	40°04'10.758"N	104°53'55.118"W	2.07	
11040.00	90.060	359.200	7483.62	3892.16	3890.39	-147.10	40°04'11.667"N	104°53'55.149"W	1.65	
11132.00	89.470	1.260	7484.00	3984.14	3982.38	-146.73	40°04'12.576"N	104°53'55.144"W	2.33	
11318.00	89.840	1.210	7485.12	4170.01	4168.33	-142.73	40°04'14.413"N	104°53'55.093"W	0.20	
11505.00	90.060	0.880	7485.28	4356.91	4355.30	-139.32	40°04'16.261"N	104°53'55.049"W	0.21	

Actual Wellpath Report

NRC 3N-4HZ AWP

Page 4 of 6

REFERENCE WELLPATH IDENTIFICATION			
Operator	KERR-MCGEE OIL & GAS ONSHORE LP	Slot	SLOT#26 NRC 3N-4HZ (350'FSL & 1950'FWL, SEC.9)
Area	COLORADO	Well	NRC 3N-4HZ
Field	WELD COUNTY (KERR MCGEE)	Wellbore	NRC 3N-4HZ AWB
Facility	SEC.09-T1N-R67W		

WELLPATH DATA (127 stations)										
MD [ft]	Inclination [°]	Azimuth [°]	TVD [ft]	Vert Sect [ft]	North [ft]	East [ft]	Latitude	Longitude	DLS [°/100ft]	Comments
11694.00	89.810	1.920	7485.50	4545.76	4544.24	-134.70	40°04'18.128"N	104°53'54.990"W	0.57	
11880.00	89.840	1.480	7486.06	4731.57	4730.16	-129.18	40°04'19.965"N	104°53'54.919"W	0.24	
12068.00	89.960	1.370	7486.39	4919.42	4918.10	-124.50	40°04'21.823"N	104°53'54.859"W	0.09	
12153.00	89.230	1.120	7486.99	5004.36	5003.08	-122.66	40°04'22.662"N	104°53'54.835"W	0.91	
12238.00	88.330	3.120	7488.80	5089.22	5087.99	-119.51	40°04'23.502"N	104°53'54.794"W	2.58	
12494.00	88.880	3.190	7495.04	5344.51	5343.53	-105.43	40°04'26.027"N	104°53'54.613"W	0.22	
12834.00	90.430	2.900	7497.08	5683.70	5683.03	-87.37	40°04'29.382"N	104°53'54.381"W	0.46	
13175.00	92.800	2.140	7487.47	6023.95	6023.54	-72.38	40°04'32.747"N	104°53'54.188"W	0.73	
13261.00	92.630	2.350	7483.40	6109.72	6109.38	-69.02	40°04'33.595"N	104°53'54.145"W	0.31	
13346.00	90.270	1.750	7481.25	6194.58	6194.29	-65.98	40°04'34.434"N	104°53'54.106"W	2.86	
13517.00	89.040	1.220	7482.28	6365.43	6365.23	-61.55	40°04'36.123"N	104°53'54.049"W	0.78	
13687.00	89.190	1.400	7484.90	6535.29	6535.16	-57.66	40°04'37.803"N	104°53'53.999"W	0.14	
13857.00	89.160	1.450	7487.35	6705.13	6705.09	-53.43	40°04'39.482"N	104°53'53.944"W	0.03	
14113.00	88.940	1.090	7491.60	6960.92	6960.99	-47.76	40°04'42.011"N	104°53'53.871"W	0.16	
14368.00	91.200	1.060	7491.28	7215.76	7215.93	-42.98	40°04'44.530"N	104°53'53.810"W	0.89	
14454.00	91.820	0.840	7489.02	7301.68	7301.89	-41.55	40°04'45.380"N	104°53'53.792"W	0.76	
14539.00	91.470	1.160	7486.58	7386.60	7386.84	-40.07	40°04'46.219"N	104°53'53.772"W	0.56	
14624.00	91.070	1.160	7484.69	7471.53	7471.80	-38.35	40°04'47.059"N	104°53'53.750"W	0.47	
14709.00	90.270	1.160	7483.70	7556.47	7556.78	-36.63	40°04'47.899"N	104°53'53.728"W	0.94	
14794.00	89.810	1.240	7483.64	7641.42	7641.76	-34.85	40°04'48.738"N	104°53'53.705"W	0.55	
14880.00	89.870	1.260	7483.88	7727.36	7727.74	-32.97	40°04'49.588"N	104°53'53.681"W	0.07	
14965.00	89.750	1.380	7484.16	7812.29	7812.71	-31.01	40°04'50.428"N	104°53'53.656"W	0.20	
15135.00	89.870	0.120	7484.73	7982.22	7982.70	-28.79	40°04'52.108"N	104°53'53.627"W	0.74	
15391.00	91.880	357.930	7480.82	8238.16	8238.60	-33.14	40°04'54.637"N	104°53'53.683"W	1.16	
15476.00	92.740	358.240	7477.39	8323.08	8323.48	-35.98	40°04'55.475"N	104°53'53.720"W	1.08	
15561.00	91.630	358.350	7474.15	8408.01	8408.38	-38.51	40°04'56.314"N	104°53'53.752"W	1.31	
15646.00	90.460	357.600	7472.60	8492.97	8493.31	-41.51	40°04'57.154"N	104°53'53.791"W	1.63	
15731.00	90.460	357.170	7471.92	8577.93	8578.22	-45.39	40°04'57.993"N	104°53'53.841"W	0.51	
15816.00	90.390	357.140	7471.29	8662.88	8663.11	-49.61	40°04'58.832"N	104°53'53.895"W	0.09	
15901.00	90.400	356.880	7470.70	8747.82	8748.00	-54.04	40°04'59.671"N	104°53'53.952"W	0.31	
15986.00	89.100	355.760	7471.07	8832.71	8832.82	-59.50	40°05'00.509"N	104°53'54.022"W	2.02	
16156.00	88.830	356.270	7474.14	9002.43	9002.38	-71.31	40°05'02.184"N	104°53'54.174"W	0.34	
16326.00	90.730	356.150	7474.80	9172.20	9172.00	-82.54	40°05'03.861"N	104°53'54.319"W	1.12	
16496.00	91.470	355.880	7471.53	9341.91	9341.55	-94.36	40°05'05.536"N	104°53'54.471"W	0.46	
16581.00	90.550	353.950	7470.03	9426.67	9426.20	-101.89	40°05'06.373"N	104°53'54.568"W	2.52	
16945.00	92.250	353.380	7461.14	9788.88	9787.86	-142.04	40°05'09.947"N	104°53'55.084"W	0.49	LAST BHI MWD+IFR SURVEY
17000.00	92.250	353.380	7458.98	9843.56	9842.45	-148.37	40°05'10.486"N	104°53'55.166"W	0.00	PROJECTION TO BIT



Actual Wellpath Report

NRC 3N-4HZ AWP

Page 5 of 6



REFERENCE WELLPATH IDENTIFICATION

Operator	KERR-MCGEE OIL & GAS ONSHORE LP	Slot	SLOT#26 NRC 3N-4HZ (350'FSL & 1950'FWL, SEC.9)
Area	COLORADO	Well	NRC 3N-4HZ
Field	WELD COUNTY (KERR MCGEE)	Wellbore	NRC 3N-4HZ AWB
Facility	SEC.09-T1N-R67W		

HOLE & CASING SECTIONS - Ref Wellbore: NRC 3N-4HZ AWB Ref Wellpath: NRC 3N-4HZ AWP

String/Diameter	Start MD [ft]	End MD [ft]	Interval [ft]	Start TVD [ft]	End TVD [ft]	Start N/S [ft]	Start E/W [ft]	End N/S [ft]	End E/W [ft]
13.5in Open Hole	16.00	1081.00	1065.00	16.00	1080.98	0.00	0.00	-0.72	-0.10
9.625in Casing Surface	16.00	1081.00	1065.00	16.00	1080.98	0.00	0.00	-0.72	-0.10
8.75in Open Hole	1081.00	7815.00	6734.00	1080.98	7478.29	-0.72	-0.10	666.66	-105.89
7in Casing Intermediate	16.00	7799.00	7783.00	16.00	7477.40	0.00	0.00	650.70	-105.15
6.125in Open Hole	7799.00	17000.00	9201.00	7477.40	7458.98	650.70	-105.15	9842.45	-148.37

TARGETS

Name	MD [ft]	TVD [ft]	North [ft]	East [ft]	Grid East [US ft]	Grid North [US ft]	Latitude	Longitude	Shape
NRC SECTION 4 LINES		-4.00	0.00	-29.94	3168439.23	1264993.66	40°03'33.221"N	104°53'53.642"W	polygon
NRC SECTION 9 LINES		-4.00	0.00	-29.94	3168439.23	1264993.66	40°03'33.221"N	104°53'53.642"W	polygon
NRC 3N-4HZ BHL ON PLAT REV-1 (460'FNL & 1850'FWL, SEC.4)		7477.00	9861.34	-163.42	3168238.82	1274853.48	40°05'10.673"N	104°53'55.360"W	point
NRC 3N-4HZ LANDBOX		7477.00	0.00	0.00	3168469.16	1264993.87	40°03'33.221"N	104°53'53.257"W	polygon
NRC 3N-4HZ BHL ON PLAT REV-2 (460'FNL & 1850'FWL, SEC.4)		7492.00	9861.34	-163.42	3168238.82	1274853.48	40°05'10.673"N	104°53'55.360"W	point

WELLPATH COMPOSITION - Ref Wellbore: NRC 3N-4HZ AWB Ref Wellpath: NRC 3N-4HZ AWP

Start MD [ft]	End MD [ft]	Positional Uncertainty Model	Log Name/Comment	Wellbore
16.00	974.00	Generic gyro - continuous (Standard)	MS ENERGY GYRODATA SURVEYS <116-974>	NRC 3N-4HZ AWB
974.00	7759.00	NaviTrak (MAGCORR,IFR)	BHI MWD+IFR SURVEYS 8 3/4" HOLE <1088-7759>	NRC 3N-4HZ AWB
7759.00	16945.00	NaviTrak (MAGCORR,IFR)	BHI MWD+IFR SURVEYS 6 1/8" HOLE <7844-16945>	NRC 3N-4HZ AWB
16945.00	17000.00	Blind Drilling (std)	Projection to bit	NRC 3N-4HZ AWB



Actual Wellpath Report

NRC 3N-4HZ AWP

Page 6 of 6



REFERENCE WELLPATH IDENTIFICATION

Operator	KERR-MCGEE OIL & GAS ONSHORE LP	Slot	SLOT#26 NRC 3N-4HZ (350'FSL & 1950'FWL, SEC.9)
Area	COLORADO	Well	NRC 3N-4HZ
Field	WELD COUNTY (KERR MCGEE)	Wellbore	NRC 3N-4HZ AWB
Facility	SEC.09-T1N-R67W		

WELLPATH COMMENTS

MD [ft]	Inclination [°]	Azimuth [°]	TVD [ft]	Comment
16.00	0.000	359.330	16.00	TIE-ON
116.00	0.600	359.330	116.00	BEGIN GYRO SURVEYS
974.00	0.440	157.340	973.98	TIE-INTO GYROS
1088.00	0.300	143.720	1087.98	BEGIN BHI MWD+IFR SURVEYS
7799.00	86.379	357.352	7477.40	7" CASING POINT
16945.00	92.250	353.380	7461.14	LAST BHI MWD+IFR SURVEY
17000.00	92.250	353.380	7458.98	PROJECTION TO BIT