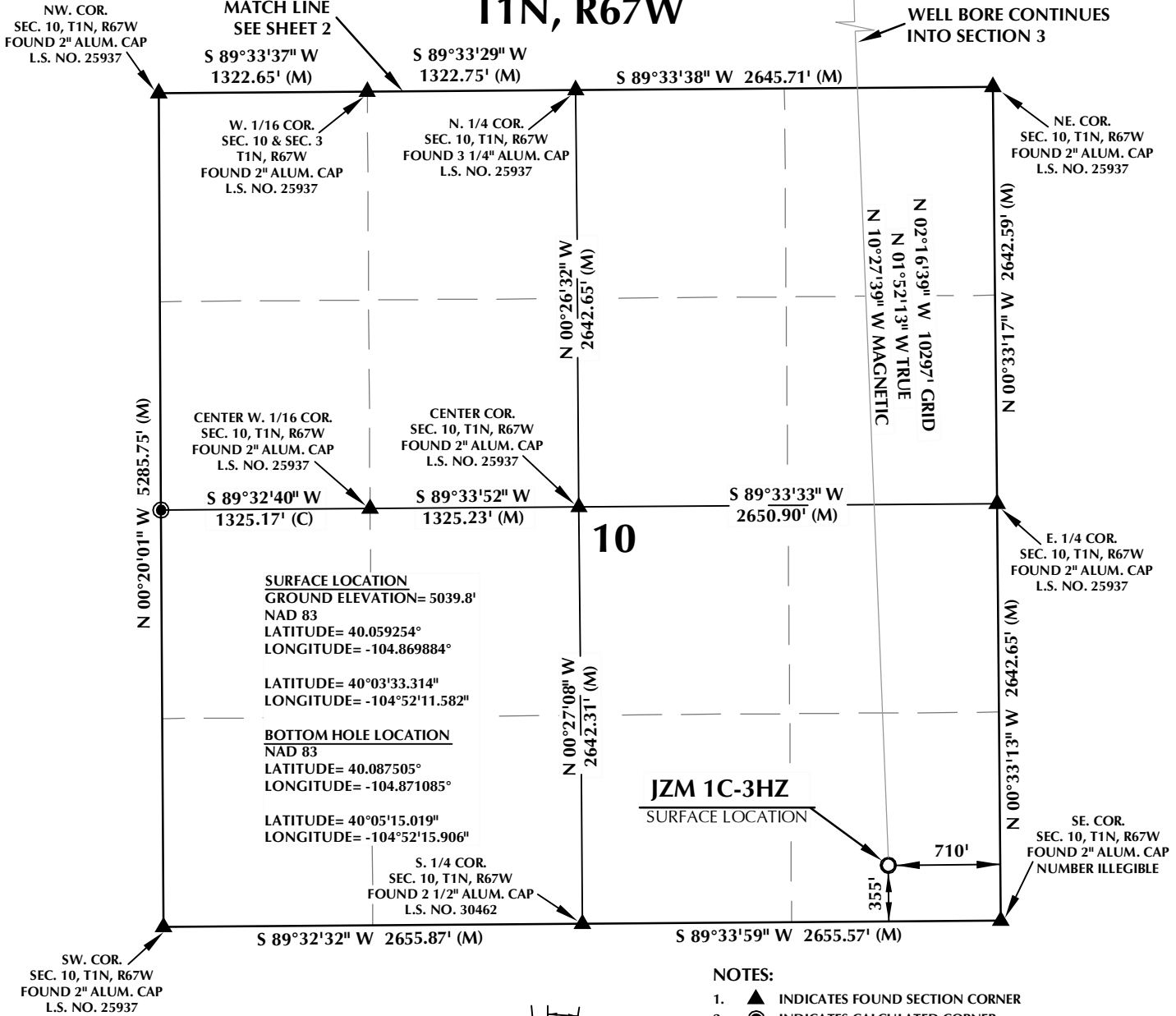


T1N, R67W



- NOTES:**
- ▲ INDICATES FOUND SECTION CORNER
 - INDICATES CALCULATED CORNER
 - ELEVATION BASED ON NAVD88 (GEOID09)
 - BASIS OF BEARING DERIVED FROM COLORADO COORDINATE SYSTEM 1983 NORTH ZONE UNLESS OTHERWISE NOTED.
 - ALL MEASURED DISTANCES ARE GRID. COMBINED SCALE FACTOR: .99972303
 - OPERATOR: ROB WILSON / PDOP = 1.4
 - SURFACE USE OF LOCATION IS DRY LAND CROP.
 - SEE ADDENDUM TO WELL LOCATION CERTIFICATE FOR EXISTING IMPROVEMENTS WITHIN 500' OF THE WELL PAD.
 - WELL FOOTAGES ARE MEASURED AT RIGHT ANGLES TO THE SECTION LINES.
 - THE BOTTOM OF HOLE BEARS N02°16'39"W 10297' FROM THE SURFACE LOCATION.
- SCALE: 1" = 1000'

CERTIFICATE OF SURVEYOR:

THIS IS TO CERTIFY THAT THE ABOVE PLAT WAS PREPARED FROM FIELD NOTES OF ACTUAL SURVEY MADE BY ME OR UNDER MY SUPERVISION AND THAT THE SAME ARE TRUE AND CORRECT TO THE BEST OF MY KNOWLEDGE AND BELIEF. THIS CERTIFICATE DOES NOT REPRESENT A LAND SURVEY PLAT OR IMPROVEMENT SURVEY PLAT AS DEFINED BY C.S. 38-51-102 AND CANNOT BE RELIED UPON TO DETERMINE OWNERSHIP.

Benjamin J. Reenders
PROFESSIONAL LAND SURVEYOR
10/25/13

BENJAMIN J. REENDERS
PROFESSIONAL LAND SURVEYOR
COLORADO REGISTRATION NUMBER 433305

NOTE:
ACCORDING TO COLORADO STATE LAW YOU MUST COMMENCE ANY LEGAL ACTION BASED UPON ANY DEFECT IN THIS SURVEY WITHIN THREE YEARS AFTER YOU FIRST DISCOVER SUCH DEFECT. IN NO EVENT MAY ANY ACTION BASED UPON ANY DEFECT IN THIS SURVEY BE COMMENCED MORE THAN TEN YEARS FROM THE DATE ON THE CERTIFICATION SHOWN HEREON.

WELL PAD - JZM 1N-3HZ

JZM 1C-3HZ
WELL LOCATION CERTIFICATE
355' FSL & 710' FEL SESE (SURFACE)
LOCATED IN SECTION 10
1' FNL & 955' FEL NENE (BOTTOM)
LOCATED IN SECTION 3
T1N, R67W, 6TH P.M.
WELD COUNTY, COLORADO

Kerr-McGee Oil & Gas Onshore L.P.

1099 18th Street
Denver, Colorado 80202

609 CONSULTING, LLC

SHERIDAN OFFICE: 2155 North Main Street, Sheridan, Wyoming 82801, Phone 307-674-0609
LOVELAND OFFICE: 1635 Foxtrail Drive, Suite 204, Loveland, Colorado 80538, Phone 970-776-4331

DRAFTED BY: LMO	CHECKED BY: BJR	SHEET NO: 1 1 OF 2
DATE DRAFTED: 10/25/13	DATE SURVEYED: 9/20/13	
REVISED:	FILE NAME: 13-39	

K:\ADARKO\2013\13_39_WATTENBERG_T1_R67_SEC_10\PLATS\JZM_1N-3HZ\PLAT.dwg, 10/24/2013 3:11:39 PM, andy

T1N, R67W

NW. COR.
SEC. 3, T1N, R67W
FOUND 2" ALUM. CAP
L.S. NO. 25937

NE. COR.
SEC. 3, T1N, R67W
FOUND 2 1/2" ALUM. CAP
L.S. NO. 24657

S 89°40'03" W 2625.30' (M) S 89°40'00" W 2634.19' (M)

N. 1/4 COR.
SEC. 3, T1N, R67W
FOUND 3 1/4" ALUM. CAP
L.S. NO. 13258

1679' 362' 955'
BOTTOM OF HOLE:
1' FNL & 955' FEL

N 01°02'36" W 2730.29' (M)

N 01°06'39" W
2725.81' (M)

1400'

2722'

N 01°30'13" W 2721.38' (M)

W. 1/4 COR.
SEC. 3, T1N, R67W
FOUND 2" ALUM. CAP
L.S. NO. 25937

CENTER COR.
SEC. 3, T1N, R67W
FOUND REBAR

E. 1/4 COR.
SEC. 3, T1N, R67W
FOUND 2" ALUM. CAP
L.S. NO. 25937

S 89°34'08" W
2628.46' (M)

S 89°33'50" W
2652.77' (M)

3

N 00°45'23" W 2640.30' (M)

SURFACE LOCATION
GROUND ELEVATION= 5039.8'
NAD 83
LATITUDE= 40.059254°
LONGITUDE= -104.869884°

LATITUDE= 40°03'33.314"
LONGITUDE= -104°52'11.582"

BOTTOM HOLE LOCATION
NAD 83
LATITUDE= 40.087505°
LONGITUDE= -104.871085°

LATITUDE= 40°05'15.019"
LONGITUDE= -104°52'15.906"

N 01°07'27" W
2640.01' (M)

N 02°16'39" W 10297' GRID
N 01°52'13" W TRUE
N 10°27'39" W MAGNETIC

N 00°58'15" W 2639.78' (M)

W. 1/16 COR.
SEC. 3 & SEC. 10
T1N, R67W
FOUND 2" ALUM. CAP
L.S. NO. 25937

S. 1/4 COR.
SEC. 3, T1N, R67W
FOUND 3 1/4" ALUM. CAP
L.S. NO. 25937

SE. COR.
SEC. 3, T1N, R67W
FOUND 2" ALUM. CAP
L.S. NO. 25937

SW. COR.
SEC. 3, T1N, R67W
FOUND 2" ALUM. CAP
L.S. NO. 25937

S 89°33'37" W
1322.65' (M)

S 89°33'29" W
1322.75' (M)

S 89°33'38" W 2645.71' (M)

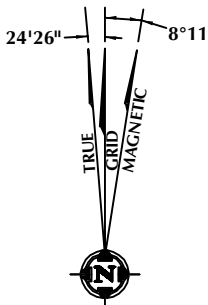
MATCH LINE
SEE SHEET 1

NOTES:

- ▲ INDICATES FOUND SECTION CORNER
- INDICATES CALCULATED CORNER
- ELEVATION BASED ON NAVD88 (GEOID09)
- BASIS OF BEARING DERIVED FROM COLORADO COORDINATE SYSTEM 1983 NORTH ZONE UNLESS OTHERWISE NOTED.
- ALL MEASURED DISTANCES ARE GRID. COMBINED SCALE FACTOR: .99972303
- OPERATOR: ROB WILSON / PDOP = 1.4
- SURFACE USE OF LOCATION IS DRY LAND CROP.
- SEE ADDENDUM TO WELL LOCATION CERTIFICATE FOR EXISTING IMPROVEMENTS WITHIN 500' OF THE WELL PAD.
- WELL FOOTAGES ARE MEASURED AT RIGHT ANGLES TO THE SECTION LINES.
- THE BOTTOM OF HOLE BEARS N02°16'39"W 10297' FROM THE SURFACE LOCATION.



SCALE: 1" = 1000'



NOTE:
MAGNETIC NORTH IS CURRENT AS OF 10/25/2013.
MAGNETIC NORTH CHANGES WEST 0°08' PER YEAR.

CERTIFICATE OF SURVEYOR:

THIS IS TO CERTIFY THAT THE ABOVE PLAT WAS PREPARED FROM FIELD NOTES OF ACTUAL SURVEY MADE BY ME OR UNDER MY SUPERVISION AND THAT THE SAME ARE TRUE AND CORRECT TO THE BEST OF MY KNOWLEDGE AND BELIEF. THIS CERTIFICATE DOES NOT REPRESENT A LAND SURVEY PLAT OR IMPROVEMENT SURVEY PLAT AS DEFINED BY C.S. 38-51-102 AND CANNOT BE RELIED UPON TO DETERMINE OWNERSHIP.

Benjamin J. Reenders
PROFESSIONAL LAND SURVEYOR
10/25/13

BENJAMIN J. REENDERS
PROFESSIONAL LAND SURVEYOR
COLORADO REGISTRATION NUMBER 4336

NOTICE:
ACCORDING TO COLORADO STATE LAW YOU MUST COMMENCE ANY LEGAL ACTION BASED UPON ANY DEFECT IN THIS SURVEY WITHIN THREE YEARS AFTER YOU FIRST DISCOVER SUCH DEFECT. IN NO EVENT MAY ANY ACTION BASED UPON ANY DEFECT IN THIS SURVEY BE COMMENCED MORE THAN TEN YEARS FROM THE DATE ON THE CERTIFICATION SHOWN HEREON.

WELL PAD - JZM 1N-3HZ

JZM 1C-3HZ
WELL LOCATION CERTIFICATE
355' FSL & 710' FEL SESE (SURFACE)
LOCATED IN SECTION 10
1' FNL & 955' FEL NENE (BOTTOM)
LOCATED IN SECTION 3
T1N, R67W, 6TH P.M.
WELD COUNTY, COLORADO

**Kerr-McGee Oil &
Gas Onshore L.P.**
1099 18th Street
Denver, Colorado 80202



CONSULTING, LLC

SHERIDAN OFFICE
2155 North Main Street
Sheridan, Wyoming 82801
Phone 307-674-0609

LOVELAND OFFICE
1635 Foxtrail Drive, Suite 204
Loveland, Colorado 80538
Phone 970-776-4331

DRAFTED BY: LMO	CHECKED BY: BJR	SHEET NO: 2 2 OF 2
DATE DRAFTED: 10/25/13	DATE SURVEYED: 9/20/13	
REVISED:	FILE NAME: 13-39	