



# Kerr-McGee Oil & Gas Onshore LP

A subsidiary of Anadarko Petroleum Corporation

1099 18<sup>th</sup> Street  
Denver, CO 80202  
720-929-6000

March 13, 2014

Department of Natural Resources  
Oil and Gas Conservation Commission  
The Chancery Building  
1120 Lincoln St., Suite 801  
Denver, CO 80203

Re: **30 Day Certification Letter - 318A.e**  
JZM 1N-3HZ  
Township 1 North, Range 67 West, Section 10: SE/4SE/4  
Unit Spacing: 01N-67W-Sec 3 E/2E/2  
01N-67W-Sec 10 E/2E/2  
02N-67W-Sec 34 SE/4SE/4  
Weld County, Colorado

Ladies/Gentlemen:

Kerr McGee Oil and Gas Onshore LP (“KMG”) hereby certify to the Director that KMG owns one-hundred percent (100%) of the mineral rights in the proposed spacing unit. Therefore, KMG respectfully requests the Director to approve the boundary well.

If you have any questions or issues regarding this permit, please contact Cheryl Light at (720) 929-6461.

Very truly yours,

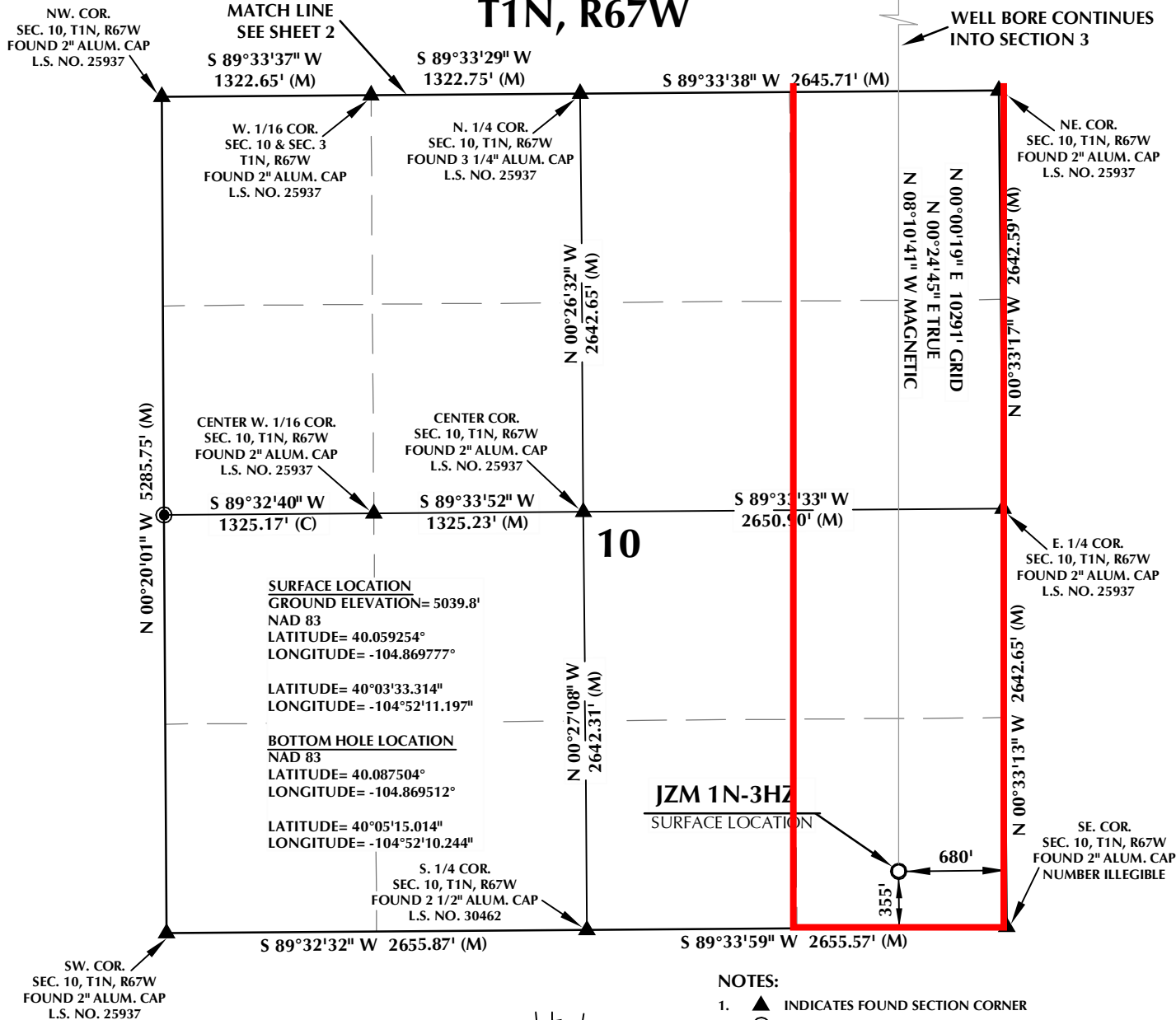
**KERR-McGEE OIL AND GAS ONSHORE LP**

A handwritten signature in blue ink that reads "RPowers".

**Ronett Powers**  
**Regulatory Analyst II**

PROPOSED SPACING UNIT

T1N, R67W



**SURFACE LOCATION**  
GROUND ELEVATION= 5039.8'  
NAD 83  
LATITUDE= 40.059254°  
LONGITUDE= -104.869777°  
  
LATITUDE= 40°03'33.314"  
LONGITUDE= -104°52'11.197"

**BOTTOM HOLE LOCATION**  
NAD 83  
LATITUDE= 40.087504°  
LONGITUDE= -104.869512°  
  
LATITUDE= 40°05'15.014"  
LONGITUDE= -104°52'10.244"

NOTES:

- ▲ INDICATES FOUND SECTION CORNER
- INDICATES CALCULATED CORNER
- ELEVATION BASED ON NAVD88 (GEOID09)
- BASIS OF BEARING DERIVED FROM COLORADO COORDINATE SYSTEM 1983 NORTH ZONE UNLESS OTHERWISE NOTED.
- ALL MEASURED DISTANCES ARE GRID. COMBINED SCALE FACTOR: .99972303
- OPERATOR: ROB WILSON / PDOP = 1.4
- SURFACE USE OF LOCATION IS DRY LAND CROP.
- SEE ADDENDUM TO WELL LOCATION CERTIFICATE FOR EXISTING IMPROVEMENTS WITHIN 500' OF THE WELL PAD.
- WELL FOOTAGES ARE MEASURED AT RIGHT ANGLES TO THE SECTION LINES.
- THE BOTTOM OF HOLE BEARS N00°00'19"E 10291' FROM THE SURFACE LOCATION.



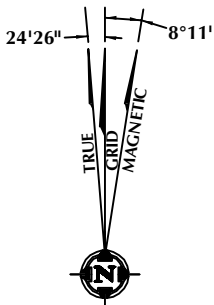
CERTIFICATE OF SURVEYOR:

THIS IS TO CERTIFY THAT THE ABOVE PLAT WAS PREPARED FROM FIELD NOTES OF ACTUAL SURVEY MADE BY ME OR UNDER MY SUPERVISION AND THAT THE SAME ARE TRUE AND CORRECT TO THE BEST OF MY KNOWLEDGE AND BELIEF. THIS CERTIFICATE DOES NOT REPRESENT A LAND SURVEY PLAT OR IMPROVEMENT SURVEY PLAT AS DEFINED BY C.S. 38-51-102 AND CANNOT BE RELIED UPON TO DETERMINE OWNERSHIP.

*Benjamin J. Reenders*  
PROFESSIONAL LAND SURVEYOR  
38305

BENJAMIN J. REENDERS  
PROFESSIONAL LAND SURVEYOR  
COLORADO REGISTRATION NUMBER 43305 10/25/13

NOTICE:  
ACCORDING TO COLORADO STATE LAW YOU MUST COMMENCE ANY LEGAL ACTION BASED UPON ANY DEFECT IN THIS SURVEY WITHIN THREE YEARS AFTER YOU FIRST DISCOVER SUCH DEFECT. IN NO EVENT MAY ANY ACTION BASED UPON ANY DEFECT IN THIS SURVEY BE COMMENCED MORE THAN TEN YEARS FROM THE DATE ON THE CERTIFICATION SHOWN HEREON.



NOTE:  
MAGNETIC NORTH IS CURRENT AS OF 10/25/2013.  
MAGNETIC NORTH CHANGES WEST 0°08' PER YEAR.

WELL PAD - JZM 1N-3HZ

JZM 1N-3HZ  
WELL LOCATION CERTIFICATE  
355' FSL & 680' FEL SESE (SURFACE)  
LOCATED IN SECTION 10  
1' FNL & 515' FEL NENE (BOTTOM)  
LOCATED IN SECTION 3  
T1N, R67W, 6TH P.M.  
WELD COUNTY, COLORADO

Kerr-McGee Oil &  
Gas Onshore L.P.  
1099 18th Street  
Denver, Colorado 80202



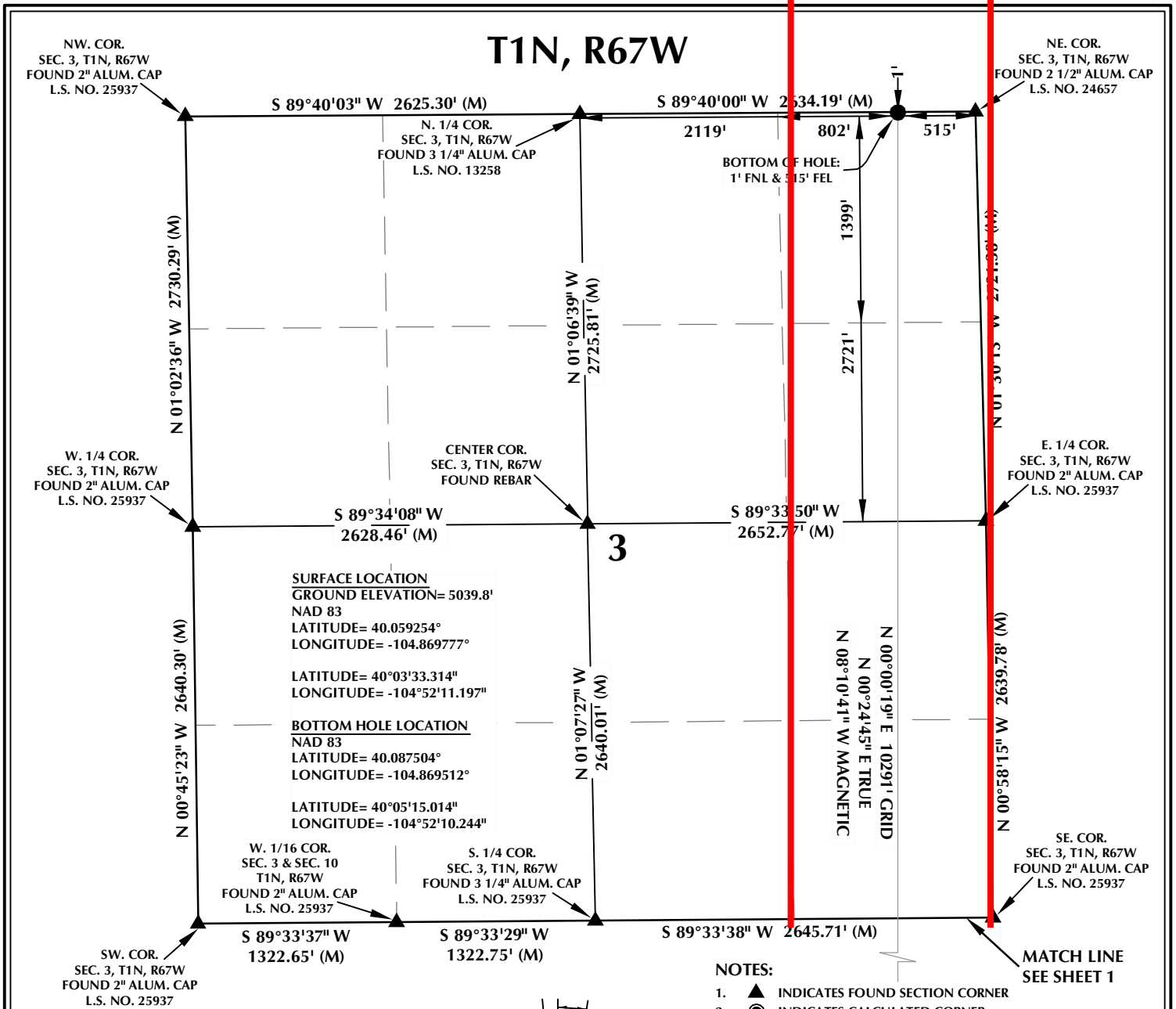
CONSULTING, LLC

SHERIDAN OFFICE 2155 North Main Street Sheridan, Wyoming 82801 Phone 307-674-0609  
LOVELAND OFFICE 1635 Foxtrail Drive, Suite 204 Loveland, Colorado 80538 Phone 970-776-4331

DRAFTED BY: APF	CHECKED BY: BJR	SHEET NO: <b>1</b> 1 OF 2
DATE DRAFTED: 10/25/13	DATE SURVEYED: 9/20/13	
REVISED:	FILE NAME: 13-39	

PROPOSED SPACING UNIT

T1N, R67W

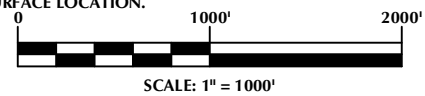


**SURFACE LOCATION**  
 GROUND ELEVATION= 5039.8'  
 NAD 83  
 LATITUDE= 40.059254°  
 LONGITUDE= -104.869777°  
 LATITUDE= 40°03'33.314"  
 LONGITUDE= -104°52'11.197"

**BOTTOM HOLE LOCATION**  
 NAD 83  
 LATITUDE= 40.087504°  
 LONGITUDE= -104.869512°  
 LATITUDE= 40°05'15.014"  
 LONGITUDE= -104°52'10.244"

N 00°00'19" E 10291' GRID  
 N 00°24'45" E TRUE  
 N 08°10'41" W MAGNETIC

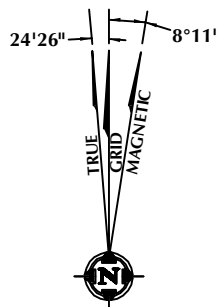
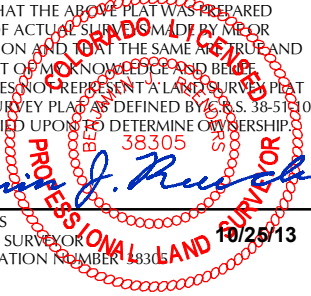
- NOTES:**
- ▲ INDICATES FOUND SECTION CORNER
  - INDICATES CALCULATED CORNER
  - ELEVATION BASED ON NAVD88 (GEOID09)
  - BASIS OF BEARING DERIVED FROM COLORADO COORDINATE SYSTEM 1983 NORTH ZONE UNLESS OTHERWISE NOTED.
  - ALL MEASURED DISTANCES ARE GRID. COMBINED SCALE FACTOR: .99972303
  - OPERATOR: ROB WILSON / PDOP = 1.4
  - SURFACE USE OF LOCATION IS DRY LAND CROP.
  - SEE ADDENDUM TO WELL LOCATION CERTIFICATE FOR EXISTING IMPROVEMENTS WITHIN 500' OF THE WELL PAD.
  - WELL FOOTAGES ARE MEASURED AT RIGHT ANGLES TO THE SECTION LINES.
  - THE BOTTOM OF HOLE BEARS N00°00'19"E 10291' FROM THE SURFACE LOCATION.



**CERTIFICATE OF SURVEYOR:**

THIS IS TO CERTIFY THAT THE ABOVE PLAT WAS PREPARED FROM FIELD NOTES OF ACTUAL SURVEY MADE BY ME OR UNDER MY SUPERVISION AND THAT THE SAME ARE TRUE AND CORRECT TO THE BEST OF MY KNOWLEDGE AND BELIEF. THIS CERTIFICATE DOES NOT REPRESENT A LAND SURVEY PLAT OR IMPROVEMENT SURVEY PLAT AS DEFINED BY C.S. 38-51-102 AND CANNOT BE RELIED UPON TO DETERMINE OWNERSHIP.

*Benjamin J. Reenders*  
 BENJAMIN J. REENDERS  
 PROFESSIONAL LAND SURVEYOR  
 COLORADO REGISTRATION NUMBER 4332



**NOTE:**  
 MAGNETIC NORTH IS CURRENT AS OF 10/25/2013.  
 MAGNETIC NORTH CHANGES WEST 0°08' PER YEAR.

**WELL PAD - JZM 1N-3HZ**

JZM 1N-3HZ  
 WELL LOCATION CERTIFICATE  
 355' FSL & 680' FEL SESE (SURFACE)  
 LOCATED IN SECTION 10  
 1' FNL & 515' FEL NENE (BOTTOM)  
 LOCATED IN SECTION 3  
 T1N, R67W, 6TH P.M.  
 WELD COUNTY, COLORADO

**Kerr-McGee Oil &  
 Gas Onshore L.P.**  
 1099 18th Street  
 Denver, Colorado 80202



**CONSULTING, LLC**

**SHERIDAN OFFICE**  
 2155 North Main Street  
 Sheridan, Wyoming 82801  
 Phone 307-674-0609

**LOVELAND OFFICE**  
 1635 Foxtrail Drive, Suite 204  
 Loveland, Colorado 80538  
 Phone 970-776-4331

DRAFTED BY: LMO	CHECKED BY: BJR	SHEET NO: <b>2</b> 2 OF 2
DATE DRAFTED: 10/25/13	DATE SURVEYED: 9/20/13	
REVISED:	FILE NAME: 13-39	

K:\ADARKO\2013\2013\_39\_WATTENBERG\_T1\_R67\_SEC\_10\PLATS\JZM\_1N-3HZ\PLAT.dwg, 10/24/2013 3:37:07 PM, andy