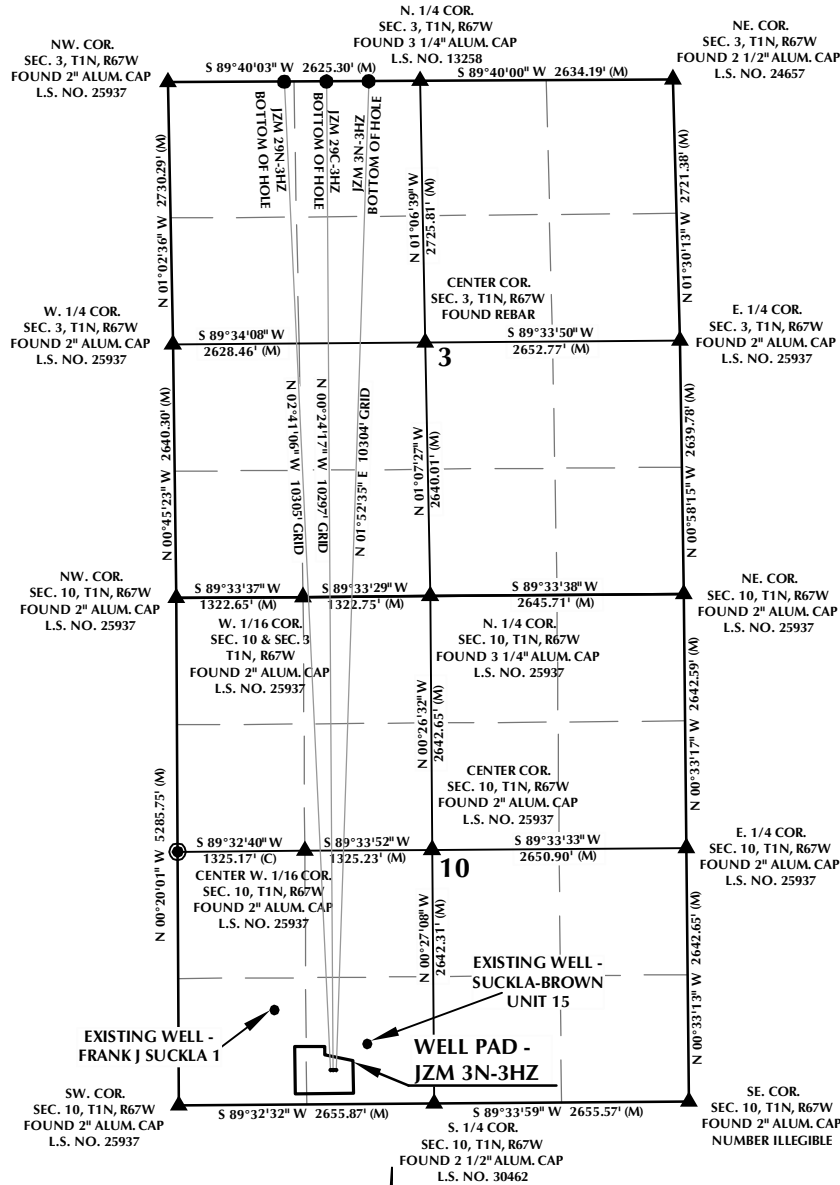


JZM 3N-3HZ T1N, R67W



WELL NOTES:

JZM 29N-3HZ
SURFACE: 355' FSL, 1580' FWL
BOTTOM HOLE: 1' FNL, 1210' FWL

JZM 29C-3HZ
SURFACE: 355' FSL, 1610' FWL
BOTTOM HOLE: 1' FNL, 1650' FWL

JZM 3N-3HZ
SURFACE: 355' FSL, 1640' FWL
BOTTOM HOLE: 1' FNL, 2090' FWL

NOTES:

- ▲ INDICATES FOUND SECTION CORNER
- INDICATES CALCULATED CORNER
- BASIS OF BEARING DERIVED FROM COLORADO COORDINATE SYSTEM 1983 NORTH ZONE UNLESS OTHERWISE NOTED.
- ALL MEASURED DISTANCES ARE GRID.
- COMBINED SCALE FACTOR: .99972303
- WELL FOOTAGES ARE MEASURED AT RIGHT ANGLES TO THE SECTION LINES.

WELL PAD - JZM 3N-3HZ

INTERFERENCE DIAGRAM
JZM 29N-3HZ,
JZM 29C-3HZ & JZM 3N-3HZ
LOCATED IN SECTIONS 3 & 10
T1N, R67W, 6TH P.M.
WELD COUNTY, COLORADO

Kerr-McGee Oil &
Gas Onshore L.P.
1099 18th Street
Denver, Colorado 80202



CONSULTING, LLC

SHERIDAN OFFICE
2155 North Main Street
Sheridan, Wyoming 82801
Phone 307-674-0609

LOVELAND OFFICE
1635 Foxtrail Drive, Suite 204
Loveland, Colorado 80538
Phone 970-776-4331

DRAFTED BY:	APF	CHECKED BY:	BJR
DATE DRAFTED:	10/25/13	DATE SURVEYED:	9/20/13
REVISED:		FILE NAME:	13-39