
ANADARKO PETROLEUM CORP - EBUS

Paragon 25C-31HZ

Montgomery County , Texas

Cement Surface Casing

08-Dec-2013

Job Site Documents

Field Ticket

Field Ticket Number: 900950239		Field Ticket Date: Sunday, December 08, 2013	
Bill To: ANADARKO PETROLEUM CORP - EBUS DO NOT MAIL - PO BOX 4995 THE WOODLANDS, TX 77387-4995		Job Name: Paragon Order Type: Streamline Order (ZOH) Well Name: Paragon 25C-31HZ Company Code: 1100 Customer PO No.: NA Shipping Point: Fort Lupton, CO, USA Sales Office: Rocky Mountains BD Well Type: Oil Well Category: Development	
Ship To: PARAGON #25C-31HZ, WELD PARAGON #25C-31HZ 3208806 S6-T1N-R65W BRIGHTON, CO 80603			

Material	Description	QTY	UOM	Base Amt	Unit Amt	Gross Amount	Discount	Net Amount
7521	CMT SURFACE CASING BOM	1	JOB	0.00	0.00	0.00		0.00
16091	ZI - PUMPING CHARGE	1	EA	0.00	4,935.00	4,935.00	68%	1,579.20
	DEPTH	1137	FT					
	FEET/METERS (FT/M)							
432904	CMT, ROCKIES SG SETUP	1	EA			0.00		0.00
432905	CMT, ROCKIES SG MILEAGE	1	MI			186.60	68%	59.71
	Number of Units	1						
432906	CMT, ROCKIES SG DELIVERY	1	TNM			3,019.21	68%	966.15
	NUMBER OF TONS	21.29						
528788	MUD FLUSH III	12	BBL	0.00	94.45	1,133.40	68%	362.69
101633304	MUD FLUSH III	42	LB		0.00	0.00		0.00
452990	SWIFTCEN (TM) SYSTEM	427	SK			25,241.22	68%	8,077.20
Totals					USD	34,515.43	23,470.48	11,044.95

Halliburton Rep: DEVIN BIRCHELL

Customer Agent: Randy Case

Halliburton Approval:

Field Ticket

Field Ticket Number: 900950239		Field Ticket Date: Sunday, December 08, 2013	
Bill To: ANADARKO PETROLEUM CORP - EBUS DO NOT MAIL - PO BOX 4995 THE WOODLANDS, TX 77387-4995		Job Name: Paragon Order Type: Streamline Order (ZOH) Well Name: Paragon 25C-31HZ Company Code: 1100 Customer PO No.: NA Shipping Point: Fort Lupton, CO, USA Sales Office: Rocky Mountains BD Well Type: Oil Well Category: Development	
Ship To: PARAGON #25C-31HZ,WELD PARAGON #25C-31HZ 3208806 S6-T1N-R65W BRIGHTON, CO 80603			

Material	Description	QTY	UOM	Base Amt	Unit Amt	Gross Amount	Discount	Net Amount
----------	-------------	-----	-----	----------	----------	--------------	----------	------------

THIS OUTPUT DOES NOT INCLUDE TAXES. APPLICABLE SALES TAX WILL BE BILLED ON THE FINAL INVOICE.

CUSTOMER HEREBY ACKNOWLEDGES RECEIPT OF THE MATERIALS AND SERVICES DESCRIBED ABOVE AND ON THE ATTACHED DOCUMENTS.

X

FIELD TICKET TOTAL: USD

11,044.95

Customer Signature

Was our HSE performance satisfactory? Y or N
(Health, Safety, Environment)

Were you satisfied with our Equipment? Y or N

Were you satisfied with our people? Y or N

Comments

Customer Information Only

Approver Userid

Anadarko Signatory Name

Charge To Number

The Road to Excellence Starts with Safety

Sold To #: 300466	Ship To #: 3208806	Quote #:	Sales Order #: 900950239
Customer: ANADARKO PETROLEUM CORP - EBUS	Customer Rep: Case, Randy		
Well Name: Paragon	Well #: 25C-31HZ	API/UWI #:	
Field:	City (SAP): BRIGHTON	County/Parish: Montgomery	State: Texas
Contractor: Majors	Rig/Platform Name/Num: Majors 29		
Job Purpose: Cement Surface Casing			
Well Type: Development Well	Job Type: Cement Surface Casing		
Sales Person: PLIENESS, RYAN	Srv Supervisor: BIRCHELL, DEVIN	MBU ID Emp #: 466993	

Job Personnel

HES Emp Name	Exp Hrs	Emp #	HES Emp Name	Exp Hrs	Emp #	HES Emp Name	Exp Hrs	Emp #
BIRCHELL, DEVIN Ray	5	466993	HARRAH, THADDEUS Gregory	5	552592	MILLER, GEOFFREY Alan	5	460232
TOWNSON, JUSTIN Travis	5	555407						

Equipment

HES Unit #	Distance-1 way	HES Unit #	Distance-1 way	HES Unit #	Distance-1 way	HES Unit #	Distance-1 way
10982754C	20 mile	11036295C	20 mile	11362287C	20 mile	11527037	20 mile
12010171	20 mile						

Job Hours

Date	On Location Hours	Operating Hours	Date	On Location Hours	Operating Hours	Date	On Location Hours	Operating Hours
12-08-13	5	4						
TOTAL			Total is the sum of each column separately					

Job

Job Times

Formation Name	Formation Depth (MD)	Top	Bottom	Called Out	Date	Time	Time Zone
Form Type			BHST	On Location	08 - Dec - 2013	06:45	MST
Job depth MD	1137. ft		Job Depth TVD	Job Started	08 - Dec - 2013	08:52	MST
Water Depth			Wk Ht Above Floor	Job Completed	08 - Dec - 2013	10:13	MSI
Perforation Depth (MD)	From		To	Departed Loc	08 - Dec - 2013	11:30	MST

Well Data

Description	New / Used	Max pressure psig	Size in	ID in	Weight lbm/ft	Thread	Grade	Top MD ft	Bottom MD ft	Top TVD ft	Bottom TVD ft
13 1/2" Open Hole Section				13.5				.	1137.		
9 5/8" Surface Casing	Unknown		9.625	8.921	36.		J-55	.	1127.		

Sales/Rental/3rd Party (HES)

Description	Qty	Qty uom	Depth	Supplier
CMT CASING EQUIPMENT BOM	1	JOB		
MILEAGE FOR CEMENTING CREW,ZI	20	Mi		
ZI FUEL SURCHG-CARS/PICKUPS<1 1/2TON	20	Mi		
KIT,HALL WELD-A	1	EA		
CNTRLZR, 9 5/8"x13 3/4',#500-0963-1375	8	EA		
BASKET - CEMENT - 9-5/8 CSG X 12-1/4	1	EA		
PLUG,CMTG,TOP,9 5/8,HWE,8.16 MIN/9.06 MA	1	EA		
COLLAR-STOP-9 5/8"-FRICTION-HINGED	2	EA		

Tools and Accessories

Type	Size	Qty	Make	Depth	Type	Size	Qty	Make	Depth	Type	Size	Qty	Make
Guide Shoe					Packer					Top Plug	9.625	1	HES
Float Shoe	9.625	1	HES	1137	Bridge Plug					Bottom Plug			
Float Collar	9.625	1	HES	1094	Retainer					SSR plug set			
Insert Float										Plug Container	9.625	1	HES

Stage Tool								Centralizers	9.625	8	HES
Miscellaneous Materials											
Gelling Agt		Conc		Surfactant		Conc		Acid Type		Qty	Conc %
Treatment Fld		Conc		Inhibitor		Conc		Sand Type		Size	Qty
Fluid Data											
Stage/Plug #: 1											
Fluid #	Stage Type	Fluid Name			Qty	Qty uom	Mixing Density lbm/gal	Yield ft3/sk	Mix Fluid Gal/sk	Rate bbl/min	Total Mix Fluid Gal/sk
1	Fresh Water Spacer				10	bbl	8.33	.0	.0	.0	
2	Mud Flush				12	bbl	8.4	.0	.0	.0	
3.5 lbm/bbl		MUD FLUSH III, 40 LB SACK (101633304)									
42 gal/bbl		MUD FLUSH III - SBM (528788)									
3	SwiftCem B2	SWIFTCM (TM) SYSTEM (452990)			427	sacks	14.2	1.54	7.66		7.66
7.66 Gal		FRESH WATER									
Calculated Values			Pressures			Volumes					
Displacement		Shut In: Instant		Lost Returns		Cement Slurry		Pad			
Top Of Cement		5 Min		Cement Returns		12	Actual Displacement		Treatment		
Frac Gradient		15 Min		Spacers		32	Load and Breakdown		Total Job		
Rates											
Circulating		Mixing		Displacement		Avg. Job					
Cement Left In Pipe		Amount	45 ft	Reason	Shoe Joint						
Frac Ring # 1 @	ID	Frac ring # 2 @	ID	Frac Ring # 3 @	ID	Frac Ring # 4 @	ID				
The Information Stated Herein Is Correct				Customer Representative Signature							

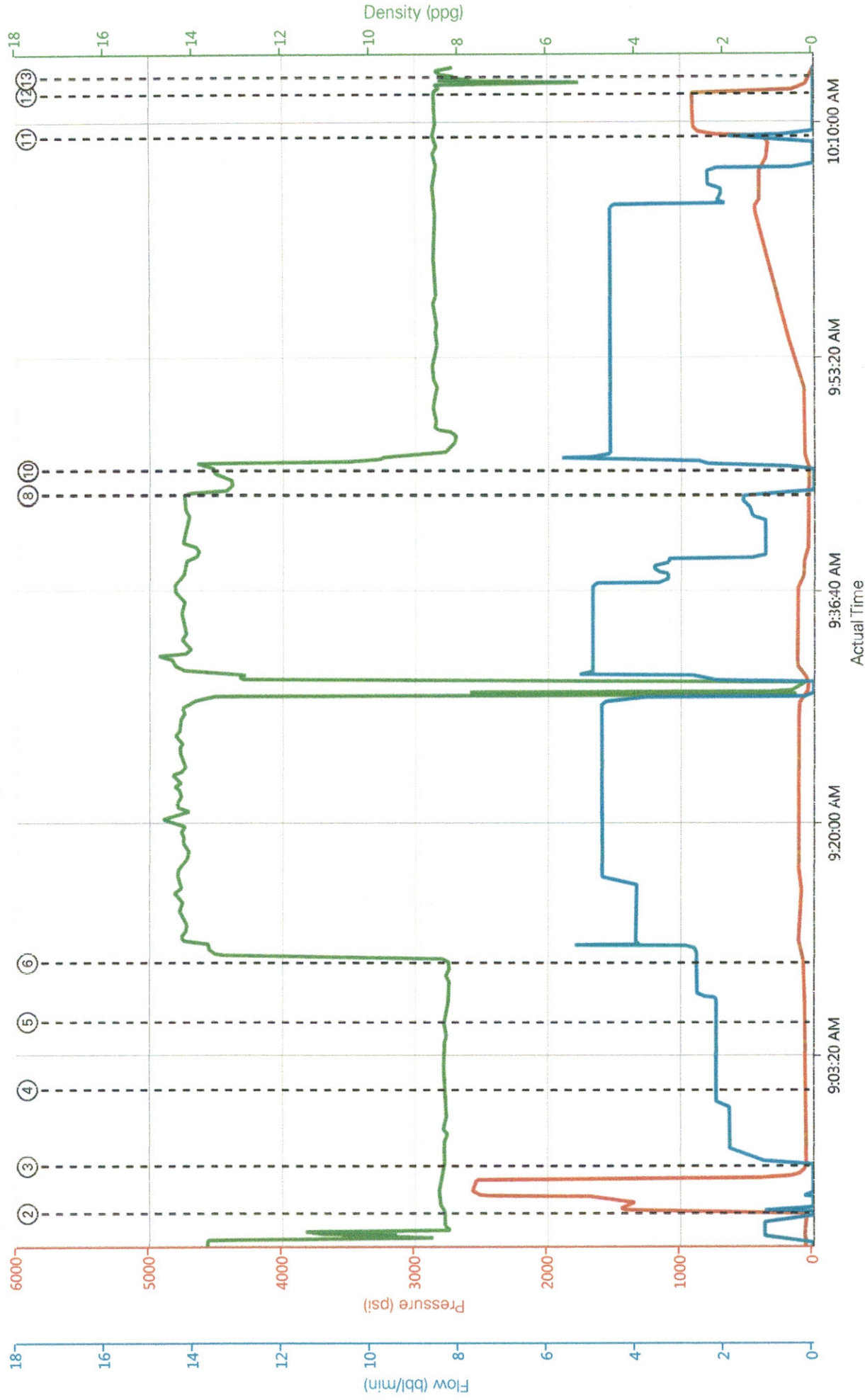
The Road to Excellence Starts with Safety

Sold To #: 300466	Ship To #: 3208806	Quote #:	Sales Order #: 900950239
Customer: ANADARKO PETROLEUM CORP - EBUS		Customer Rep: Case, Randy	
Well Name: Paragon	Well #: 25C-31HZ	API/UWI #:	
Field:	City (SAP): BRIGHTON	County/Parish: Montgomery	State: Texas
Legal Description:			
Lat:		Long:	
Contractor: Majors		Rig/Platform Name/Num: Majors 29	
Job Purpose: Cement Surface Casing			Ticket Amount:
Well Type: Development Well		Job Type: Cement Surface Casing	
Sales Person: PLIENESS, RYAN		Srvs Supervisor: BIRCHELL, DEVIN	MBU ID Emp #: 466993

Activity Description	Date/Time	Cht #	Rate bbl/min	Volume bbl		Pressure psig		Comments
				Stage	Total	Tubing	Casing	
Call Out	12/08/2013 03:00							Called Out Cement Crew For Anadarko Petroleum Paragon 25C-31HZ Surface
Pre-Convoy Safety Meeting	12/08/2013 06:25							Discussed Hazards On Route To Location, Weather, Other Traffic, Route
Depart from Service Center or Other Site	12/08/2013 06:30							
Arrive At Loc	12/08/2013 06:45							Arrived To Location Talked With Company Rep On Volumes, Rates, Depths
Pre-Rig Up Safety Meeting	12/08/2013 06:50							Discussed Hazards With Cement Crew For Rigging Up Iron and Water Hoses
Rig-Up Equipment	12/08/2013 06:55							
Pre-Job Safety Meeting	12/08/2013 08:30							Discussed Job Procedures With Cement and Rig Crews
Rig-Up Completed	12/08/2013 08:45							Finished Rigging Up To The Floor And Well Head
Prime Pumps	12/08/2013 08:50							Primed Pumps and Lines For Pressure Test
Pressure Test	12/08/2013 08:52						2570.0	Test Pump and Lines to 2570 psi
Pump Spacer	12/08/2013 08:55		2.5	10	10		64.0	Pumped 10 bbls Fresh Water Spacer
Pump Spacer 1	12/08/2013 09:01		2.5	12	22		68.0	Pumped 12 bbls Mud Flush III Spacer
Pump Spacer 2	12/08/2013 09:05		2.5	10	32		72.0	Pumped 10 bbls Fresh Water Spacer

Activity Description	Date/Time	Cht #	Rate bbl/min	Volume bbl		Pressure psig		Comments
				Stage	Total	Tubing	Casing	
Pump Cement	12/08/2013 09:10		4	117	149		116.0	Pumped 117 bbls (427sks) 14.2 ppg Slurry, Yield 1.54 ft ³ /sk Water 7.66 gal/sk
Drop Plug	12/08/2013 09:44							Dropped Plug With Driller Witnessing
Pump Displacement	12/08/2013 09:45							Pumped 85 bbls Fresh Water Displacement
Clean Lines	12/08/2013 09:45							Washed Pump and Lines on Plug
Spacer Returns to Surface	12/08/2013 09:55		5	41	190		197.0	10 bbls Fresh Water, 12 bbls Mud Flush III, 10 bbls Water
Cement Returns to Surface	12/08/2013 10:01		5	73	222		400.0	12 bbls Cement Returns To Surface
Slow Rate	12/08/2013 10:04		3	75	224		450.0	Slowed Rate To Bump Plug
Bump Plug	12/08/2013 10:08		3	85	234		360.0	Bumped Plug With 360 psi Took Pressure to 915 psi
Check Floats	12/08/2013 10:12						925.0	Checked Floats, Floats Held With .5 bbls Back To Truck
Job Complete	12/08/2013 10:13							
Post-Job Safety Meeting (Pre Rig-Down)	12/08/2013 10:15							Discussed Hazards With Crew For Rigging Down Iron and Water Hoses
Rig-Down Equipment	12/08/2013 10:20							
Rig-Down Completed	12/08/2013 11:00							
Pre-Convoy Safety Meeting	12/08/2013 11:15							Discussed Hazards On Route To Service Center, Weather, Other Traffic, Route
Depart Location for Service Center or Other Site	12/08/2013 11:20							Thank You For Using Halliburton Energy Services

Ensign Renfro 42-1-36CHZ



Truck 1 Pr (psi) Truck 1 Dens (ppg) Truck 1 Stry Rt (bbl/min)

- ① Start Job 77;13.71;0
- ② Test Lines 1446;8.4;0.1
- ③ Pump Spacer 1 53;8.32;0
- ④ Pump Spacer 2 65;8.35;2.2
- ⑤ Pump Spacer 2 67;8.36;2.2
- ⑥ Pump Lead Cement 79;8.29;2.7
- ⑦ Shutdown 41;13.3;0
- ⑧ Clean Lines 40;13.29;0
- ⑨ Drop Top Plug 38;13.52;0
- ⑩ Pump Displacement 38;13.53;0
- ⑪ Bump Plug 827;8.63;0
- ⑫ Check Floats 188;8.43;0
- ⑬ End Job 16;8.46;0

HALLIBURTON JOB SAFETY ANALYSIS

DATE: <u>Dec 8-2013</u>	SUPERVISOR: <u>Bickell</u>	JOB TYPE: <u>Service</u>
CUSTOMER: <u>Prodraco</u>	RIG NUMBER: <u>Major 29</u>	SALES ORDER: <u>922850219</u>
CROSS ROADS:		
MUSTER AREA:		
FIRE EXTINGUISHERS:		
FIRST AID KIT:		
EMERGENCY CONTACTS:		
AXIOM MEDICAL: (877) 502-9466		
FLIGHT FOR LIFE:		
EMERGENCY VEHICLE: <u>1221071</u>		
DENVER (720) 321-3900		
GRAND JUNCTION (970) 332-4923		
SAFETY HOT TOPIC OF DAY: Use Proper Lifting Technique		

Geoff Miller 4160232 ATTENDENTS

PRINT NAME	EMPLOYEE NUMBER	SIGNATURE	PRINT NAME	EMPLOYEE #	SIGNATURE
Dan Bickell	416985	<i>[Signature]</i>	Beaton Babcock	Major	<i>[Signature]</i>
Thaddeus Smith	552592	<i>[Signature]</i>			
James Thomas	553407	<i>[Signature]</i>			
James C. Jones	7 Services	<i>[Signature]</i>			
Elizabeth McCloud	NDU	<i>[Signature]</i>			
Edwin Morales	NDU	<i>[Signature]</i>			
Anthony Smith	Major	<i>[Signature]</i>			
Brandon Mathews	NDU	<i>[Signature]</i>			
Charles Fisher	MAJOR	<i>[Signature]</i>			
Jeff Canfield	MAJOR	<i>[Signature]</i>			
Completed by:			Employee #		

Kandy Case REI (APC) Kim Place

"SAFETY HUDDLE"	TASK	POTENTIAL RISK OR HAZARDS	RECOMMENDATION TO ELIMINATE OR REDUCE POTENTIAL HAZARDS
EMERGENCY PROCEDURES	1 ISA	1	1
	2 Safety Huddles	2	2
	3	3	3
	4	4	4
	5	5	5
JOURNEY MANAGEMENT	1 Drive	1 Animals	1 Drive for Conditions
	2	2 Road Condition	2 Drive Safely
	3	3 Other Traffic	3 leave yourself an out
	4	4	4
	5	5	5
ARRIVE ON LOCATION	1 Site Assessment	1	1
	2	2	2
	3	3	3
	4	4	4
	5	5	5
SPOT EQUIPMENT	1 Spot Equipment	1 Under Load	1 SPOTTERS
	2	2 Mud	2
	3	3 Tight Locations	3
	4	4 3rd Party Traffic	4
	5	5	5
RIG UP	1 Rig up Iron + Hoses	1 Truck Pivots	1 Team Work
	2	2 Lifting	2 Good Communication
	3	3 Sling Path	3
	4	4	4
	5	5	5
PICKING UP IRON TO RIG FLOOR AND RIGGING UP FLOOR	1 Pick up stand Pipe	1 Rack Pivots	1 Team Work
	2 When Equipped to floor	2 Suspended loads	2 Communication
	3	3	3
	4	4	4
	5	5	5

"SAFETY HUDDLE"	TASK	POTENTIAL RISK OR HAZARDS	RECOMMENDATION TO ELIMINATE OR REDUCE POTENTIAL HAZARDS
MIX CHEMICALS	1 Mixers	1 Dust	1 Paper PPE
	2 Flushes	2 Spills	2 Paper Air Pressure
	3 Cement	3 Splashes	
	4 Displacement		
	5		
RUN JOB	1 Pumping Spacers	1 High Pressures	1 Stay Clear of Train
	2 Cement	2 Fuel Pumps	
	3 Displacement	3 Working surfaces	
	4		
	5		
RIG DOWN	1 Rigging Down Iron	1 Rock Points	1 Tense Work
	2 Hoses	2 Hammering	2 Good Communication
	3 Bille	3 Lifting	
	4		
	5		
TRAVEL HOME	1 Driving	1 Animals	1 Be Aware of Surroundings
	2	2 Other Traffic	2 Have yourself an Exit
	3	3 Road Conditions	3 Drive for Conditions
	4		
	5		
MISCELLANEOUS	1	1	1
	2	2	2
	3	3	3
	4	4	4
	5	5	5
MISCELLANEOUS	1	1	1
	2	2	2
	3	3	3
	4	4	4
	5	5	5

SAFETY EQUIPMENT REQUIRED TO DO THIS JOB

HARD HATS
STEEL TOES
SAFETY GLASSES
IMPACT GLOVES

GAS MONITORS
SAFETY HARNESS
FACE SHIELDS
BOOGLES

RESPIRATORS
BARRICADES
CAUTION TAPE
WORK PERMIT REQUIRED

FIRE EXTINGUISHER
LOCK OUT/TAG OUT
MSDS SHEETS
HIGH PRESSURE PUMP SIGN

JSA	JOB TYPE:	Cementing	DATE:	8-Dec-2013	NEW:	REVISED:	X
TICKET #	NAME OF PERSON WHO DOES JOB:	BIRCHELL, DEVIN Ray	COORDINATOR:	CHRISTOPHER MARTINEZ	ANALYSIS BY:		
COMPANY:	WELL LOCATION:	Brighton Co	DEPARTMENT:	Cementing Services			
Anadarko Petroleum Corp							
REQUIRED AND/OR RECOMMENDED PERSONAL PROTECTION EQUIPMENT: HARD HAT / STEEL TOE BOOTS / SAFETY GLASSES / EAR PLUGS.							APPROVED BY:
SEQUENCE OF BASIC JOB STEPS	POTENTIAL HAZARDS		RECOMMENDED ACTION OR PROCEDURE				

Spotting Equipment

3rd Party Traffic
Tight Location

SPOTTERS

Rigging Up Iron
And Hoses

Hit With Hammer
Pinched Fingers
Hurt Back
Slips Trips and Falls

Clear Swing Path
Good Hand Placement
Team Lift
Look Before Stepping

HALLIBURTON

Job Safety Analysis

JSA	JOB TYPE: Cementing	DATE: 8-Dec-2013	NEW:	REVISED: X
TICKET # 900950239	NAME OF PERSON WHO DOES JOB: BIRCHELL, DEVIN Ray	COORDINATOR: CHRISTOPHER MARTINEZ	ANALYSIS BY:	
COMPANY: Anadarko Petroleum Corp	WELL LOCATION: Brighton Co	DEPARTMENT: Cementing Services	REVIEWED BY:	
REQUIRED AND/OR RECOMMENDED PERSONAL PROTECTION EQUIPMENT: HARD HAT / STEEL TOE BOOTS / SAFETY GLASSES / EAR PLUGS.				APPROVED BY:
SEQUENCE OF BASIC JOB STEPS	POTENTIAL HAZARDS	RECOMMENDED ACTION OR PROCEDURE		

Make Sure All Pressure Is Released

Trapped Pressure

Make Sure All Valves Are Open

Rigging Down Iron And Hoses

Hit With Hammer
Pinched Fingers
Hurt Back

Clear Swing Path
Good Hand Placement
Team Lift

Using Rig Hoist

Over Head Lines

Good Communication With Operator

12/08/2013

ANADARKO

JSA

Paragon 250-31HZ

JOB TASK: CEMENTING SURFACE CASING

OBJECTIVE: RIG UP CEMENTERS CEMENT HEAD, HOOK UP CEMENT HOSES, PRESSURE TEST LINES, CEMENT CASING, SHUT DOWN, DROP PLUG, DISPLACE CEMENT AND LAND PLUG, SHUT CASING IN, BREAK CEMENTER EQUIP. DOWN AND WOC.

HAZZARDS: LIFTING HAZZARDS, STRUCK BY, CHEMICAL HAZZARDS, HIGH PRESSURE LINES, PINCH PIONTS, SLIPS AND TRIPS, OVERHEAD HAZZARDS, POTENTIAL GAS HAZZARDS.

PERVENTIONS: SAFETY MEETING PRIOR TO STARTING JOB, HAND AND FOOT PLACEMENT, USING 5 PIONT HARNESS OVER 4' HIGH, TEAM LIFTING OR USE WINCH LINE TO LIFT HEAVY OBJECTS, MSDS SHEETS, WEARING PROPER PPE, DUE NOT HAMMER ON ANYTHING WITH PRESSURE, GOOD COMMUNICATION BETWEEN ALL PARTIES ON LOCATION, IF YOU GET CEMENT ON YOU WASH IT OFF IMEADETLY AND CONTACT CONSULTANT OF ANY INCEDENTS THAT OCCERED. WHIP CHECKS ON AND SECURED, PROPER TOOL FOR THE JOB, GAS MONITER, IF ANY THING SHOULD HAPPEN MEET AT ENTRENCE OF LOCATION, IF GAS MONITOR GOES OFF GO UP WIND AND UPHILL OF LOCATION. WHEN PRESSURE TESTING LINES AND CEMENTING WELL STAY OFF OF FLOOR AND AWAY FROM MANIFOLD. FOR ANY REASON YOU NEED TO CROSS OVER CEMENT LINES STEP ON THE LINE NOT OVER LINES. IN CASE OF EMERGENCY # ARE POSTED ON DOG HOUSE WALL AND IN COMPANY HAND SHACK AND GPS CORDINATES ARE AVAILIBLY ON DESK IN COMPANY HAND SHACK FOR FLIGHT FOR LIFE.

HAVE A SAFE JOB

Randy Case
Mike
Jeff Caudill
Ed Barrow
Steve Buckell
Gary Brock
Guff
Charles Fols

Ed Barrow NOU

Ernie Maltrejo

Joe Joe

Thaddeus