



Kerr-McGee Oil & Gas Onshore LP

A subsidiary of Anadarko Petroleum Corporation

1099 18th Street
Denver, CO 80202
720-929-6000

March 13, 2014

Department of Natural Resources
Oil and Gas Conservation Commission
The Chancery Building
1120 Lincoln St., Suite 801
Denver, CO 80203

Re: **30 Day Certification Letter - 318A.e**
JZM 2C-3HZ
Township 1 North, Range 67 West, Section 10: SW/4SE/4
Unit Spacing: 01N-67W-Sec 3 W/2E/2
01N-67W-Sec 10 W/2E/2
02N-67W-Sec 34 SW/4SE/4
Weld County, Colorado

Ladies/Gentlemen:

Kerr McGee Oil and Gas Onshore LP (“KMG”) hereby certify to the Director that KMG owns one-hundred percent (100%) of the mineral rights in the proposed spacing unit. Therefore, KMG respectfully requests the Director to approve the boundary well.

If you have any questions or issues regarding this permit, please contact Cheryl Light at (720) 929-6461.

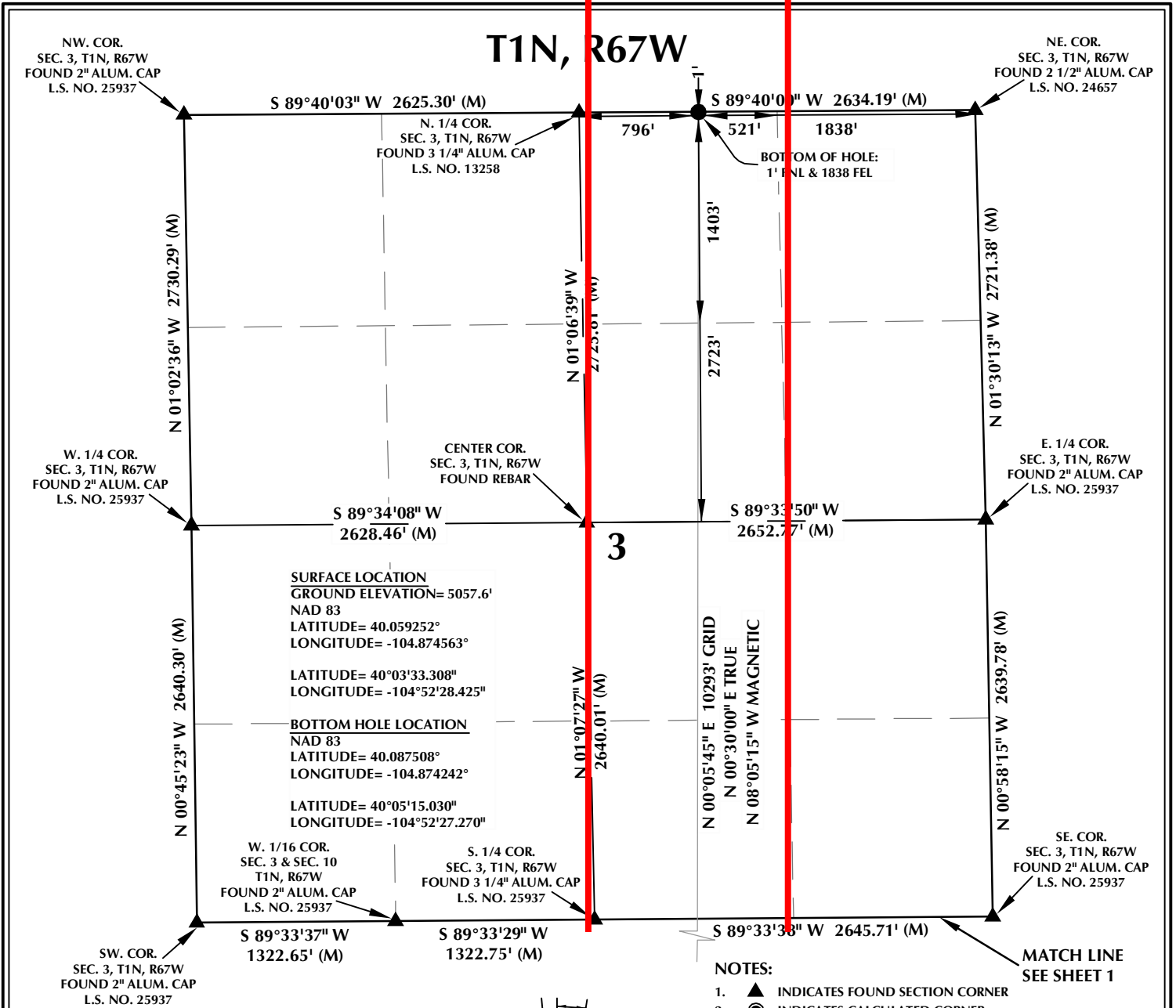
Very truly yours,

KERR-McGEE OIL AND GAS ONSHORE LP

A handwritten signature in blue ink that reads "RPowers".

Ronett Powers
Regulatory Analyst II

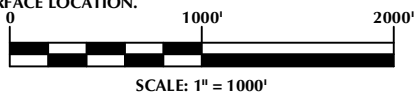
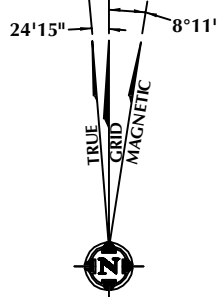
PROPOSED SPACING UNIT



SURFACE LOCATION
 GROUND ELEVATION= 5057.6'
 NAD 83
 LATITUDE= 40.059252°
 LONGITUDE= -104.874563°
 LATITUDE= 40°03'33.308"
 LONGITUDE= -104°52'28.425"

BOTTOM HOLE LOCATION
 NAD 83
 LATITUDE= 40.087508°
 LONGITUDE= -104.874242°
 LATITUDE= 40°05'15.030"
 LONGITUDE= -104°52'27.270"

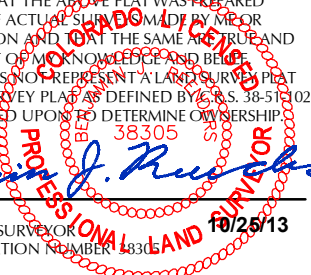
- NOTES:**
- ▲ INDICATES FOUND SECTION CORNER
 - INDICATES CALCULATED CORNER
 - ELEVATION BASED ON NAVD88 (GEOID09)
 - BASIS OF BEARING DERIVED FROM COLORADO COORDINATE SYSTEM 1983 NORTH ZONE UNLESS OTHERWISE NOTED.
 - ALL MEASURED DISTANCES ARE GRID. COMBINED SCALE FACTOR: .99972303
 - OPERATOR: ROB WILSON / PDOP = 1.7
 - SURFACE USE OF LOCATION IS DRY LAND CROP.
 - SEE ADDENDUM TO WELL LOCATION CERTIFICATE FOR EXISTING IMPROVEMENTS WITHIN 500' OF THE WELL PAD.
 - WELL FOOTAGES ARE MEASURED AT RIGHT ANGLES TO THE SECTION LINES.
 - THE BOTTOM OF HOLE BEARS N00°05'45"E 10293' FROM THE SURFACE LOCATION.



CERTIFICATE OF SURVEYOR:

THIS IS TO CERTIFY THAT THE ABOVE PLAT WAS PREPARED FROM FIELD NOTES OF ACTUAL SURVEY MADE BY ME OR UNDER MY SUPERVISION AND THAT THE SAME ARE TRUE AND CORRECT TO THE BEST OF MY KNOWLEDGE AND BELIEF. THIS CERTIFICATE DOES NOT REPRESENT A LAND SURVEY PLAT OR IMPROVEMENT SURVEY PLAT AS DEFINED BY C.S. 38-51-102 AND CANNOT BE RELIED UPON TO DETERMINE OWNERSHIP.

Benjamin J. Reenders
 BENJAMIN J. REENDERS
 PROFESSIONAL LAND SURVEYOR
 COLORADO REGISTRATION NUMBER 1836



NOTE: MAGNETIC NORTH IS CURRENT AS OF 10/25/2013. MAGNETIC NORTH CHANGES WEST 0°08' PER YEAR.

WELL PAD - JZM 2N-3HZ

JZM 2C-3HZ
WELL LOCATION CERTIFICATE
 355' FSL & 2019' FEL SWSE (SURFACE)
 LOCATED IN SECTION 10
 1' FNL & 1838' FEL NWNE (BOTTOM)
 LOCATED IN SECTION 3
 T1N, R67W, 6TH P.M.
 WELD COUNTY, COLORADO

Kerr-McGee Oil & Gas Onshore L.P.
 1099 18th Street
 Denver, Colorado 80202



CONSULTING, LLC

SHERIDAN OFFICE
 2155 North Main Street
 Sheridan, Wyoming 82801
 Phone 307-674-0609

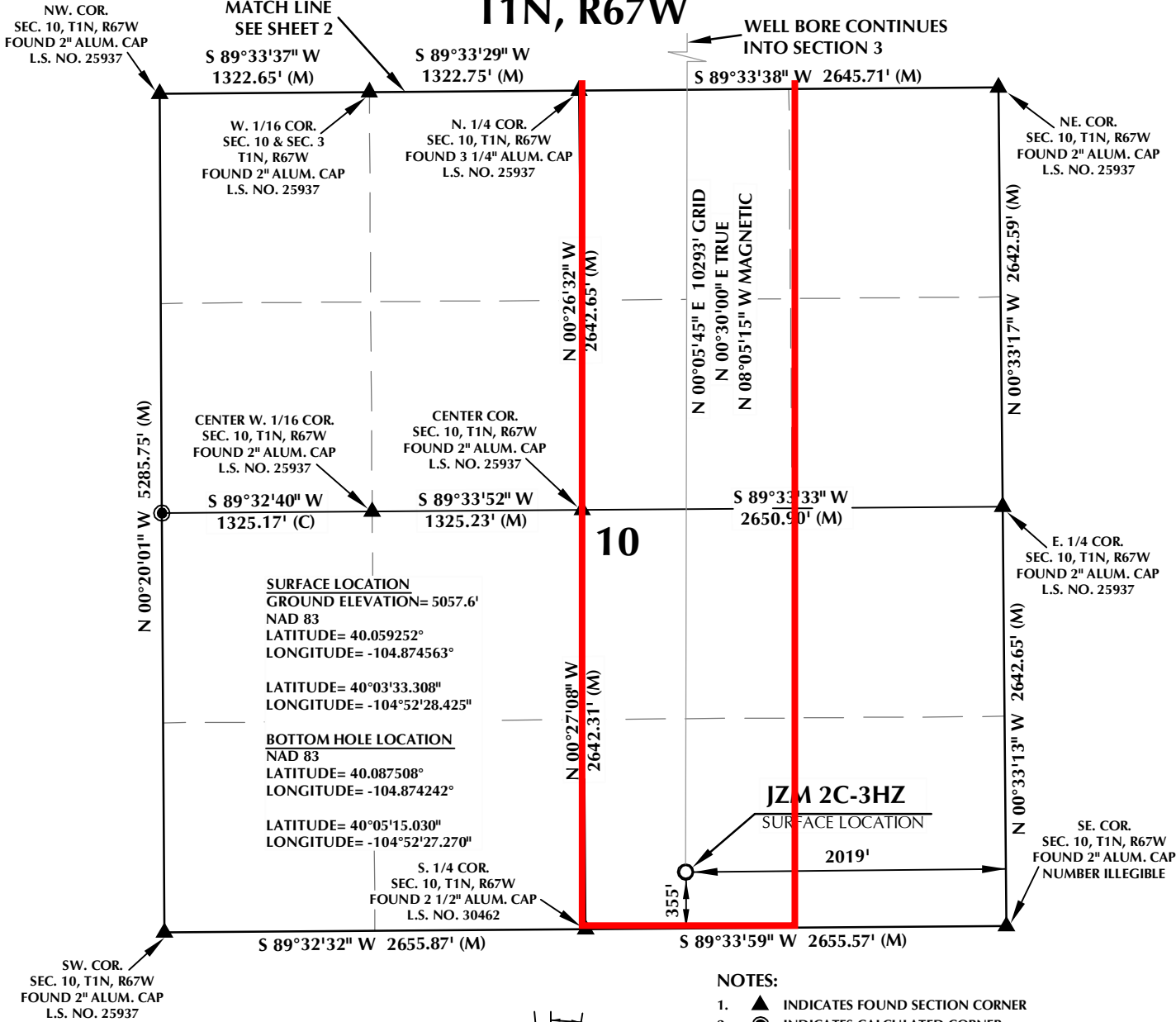
LOVELAND OFFICE
 1635 Foxtrail Drive, Suite 204
 Loveland, Colorado 80538
 Phone 970-776-4331

DRAFTED BY:	APF	CHECKED BY:	BJR	SHEET NO:
DATE DRAFTED:	10/25/13	DATE SURVEYED:	9/20/13	2
REVISED:		FILE NAME:	13-39	

K:\ADARKO\2013\2013_39_WATTENBERG_T1_R67_SEC_10\PLATS\JZM_2N-3HZ\PLAT.dwg, 10/26/2013 10:47:00 AM, .dwg

PROPOSED SPACING UNIT

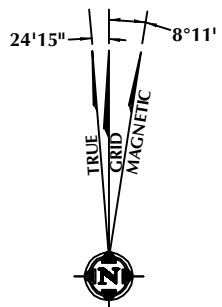
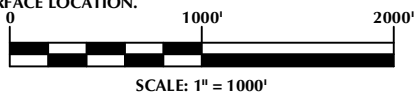
T1N, R67W



SURFACE LOCATION
 GROUND ELEVATION= 5057.6'
 NAD 83
 LATITUDE= 40.059252°
 LONGITUDE= -104.874563°
 LATITUDE= 40°03'33.308"
 LONGITUDE= -104°52'28.425"

BOTTOM HOLE LOCATION
 NAD 83
 LATITUDE= 40.087508°
 LONGITUDE= -104.874242°
 LATITUDE= 40°05'15.030"
 LONGITUDE= -104°52'27.270"

- NOTES:**
- ▲ INDICATES FOUND SECTION CORNER
 - INDICATES CALCULATED CORNER
 - ELEVATION BASED ON NAVD88 (GEOID09)
 - BASIS OF BEARING DERIVED FROM COLORADO COORDINATE SYSTEM 1983 NORTH ZONE UNLESS OTHERWISE NOTED.
 - ALL MEASURED DISTANCES ARE GRID. COMBINED SCALE FACTOR: .99972303
 - OPERATOR: ROB WILSON / PDOP = 1.7
 - SURFACE USE OF LOCATION IS DRY LAND CROP.
 - SEE ADDENDUM TO WELL LOCATION CERTIFICATE FOR EXISTING IMPROVEMENTS WITHIN 500' OF THE WELL PAD.
 - WELL FOOTAGES ARE MEASURED AT RIGHT ANGLES TO THE SECTION LINES.
 - THE BOTTOM OF HOLE BEARS N00°05'45"E 10293' FROM THE SURFACE LOCATION.

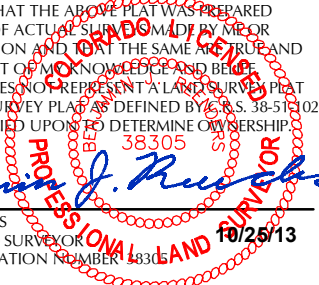


NOTE: MAGNETIC NORTH IS CURRENT AS OF 10/25/2013. MAGNETIC NORTH CHANGES WEST 0°08' PER YEAR.

CERTIFICATE OF SURVEYOR:

THIS IS TO CERTIFY THAT THE ABOVE PLAT WAS PREPARED FROM FIELD NOTES OF ACTUAL SURVEY MADE BY ME OR UNDER MY SUPERVISION AND THAT THE SAME ARE TRUE AND CORRECT TO THE BEST OF MY KNOWLEDGE AND BELIEF. THIS CERTIFICATE DOES NOT REPRESENT A LAND SURVEY PLAT OR IMPROVEMENT SURVEY PLAT AS DEFINED BY C.S. 38-51-102 AND CANNOT BE RELIED UPON TO DETERMINE OWNERSHIP.

Benjamin J. Reenders
 BENJAMIN J. REENDERS
 PROFESSIONAL LAND SURVEYOR
 COLORADO REGISTRATION NUMBER 433305



NOTICE: ACCORDING TO COLORADO STATE LAW YOU MUST COMMENCE ANY LEGAL ACTION BASED UPON ANY DEFECT IN THIS SURVEY WITHIN THREE YEARS AFTER YOU FIRST DISCOVER SUCH DEFECT. IN NO EVENT MAY ANY ACTION BASED UPON ANY DEFECT IN THIS SURVEY BE COMMENCED MORE THAN TEN YEARS FROM THE DATE ON THE CERTIFICATION SHOWN HEREON.

WELL PAD - JZM 2N-3HZ

JZM 2C-3HZ
 WELL LOCATION CERTIFICATE
 355' FSL & 2019' FEL SWSE (SURFACE)
 LOCATED IN SECTION 10
 1' FNL & 1838' FEL NWNE (BOTTOM)
 LOCATED IN SECTION 3
 T1N, R67W, 6TH P.M.
 WELD COUNTY, COLORADO

Kerr-McGee Oil & Gas Onshore L.P.
 1099 18th Street
 Denver, Colorado 80202



CONSULTING, LLC

SHERIDAN OFFICE: 2155 North Main Street, Sheridan, Wyoming 82801, Phone 307-674-0609
 LOVELAND OFFICE: 1635 Foxtrail Drive, Suite 204, Loveland, Colorado 80538, Phone 970-776-4331

DRAFTED BY: APF	CHECKED BY: BJR	SHEET NO: 1 1 OF 2
DATE DRAFTED: 10/25/13	DATE SURVEYED: 9/20/13	
REVISED:	FILE NAME: 13-39	

K:\ADARKO\2013\2013_39_WATTENBERG_T1_R67_SEC_10\PLATS\JZM_2N-3HZ\PLAT.dwg, 10/26/2013 10:46:55 AM, .dwg