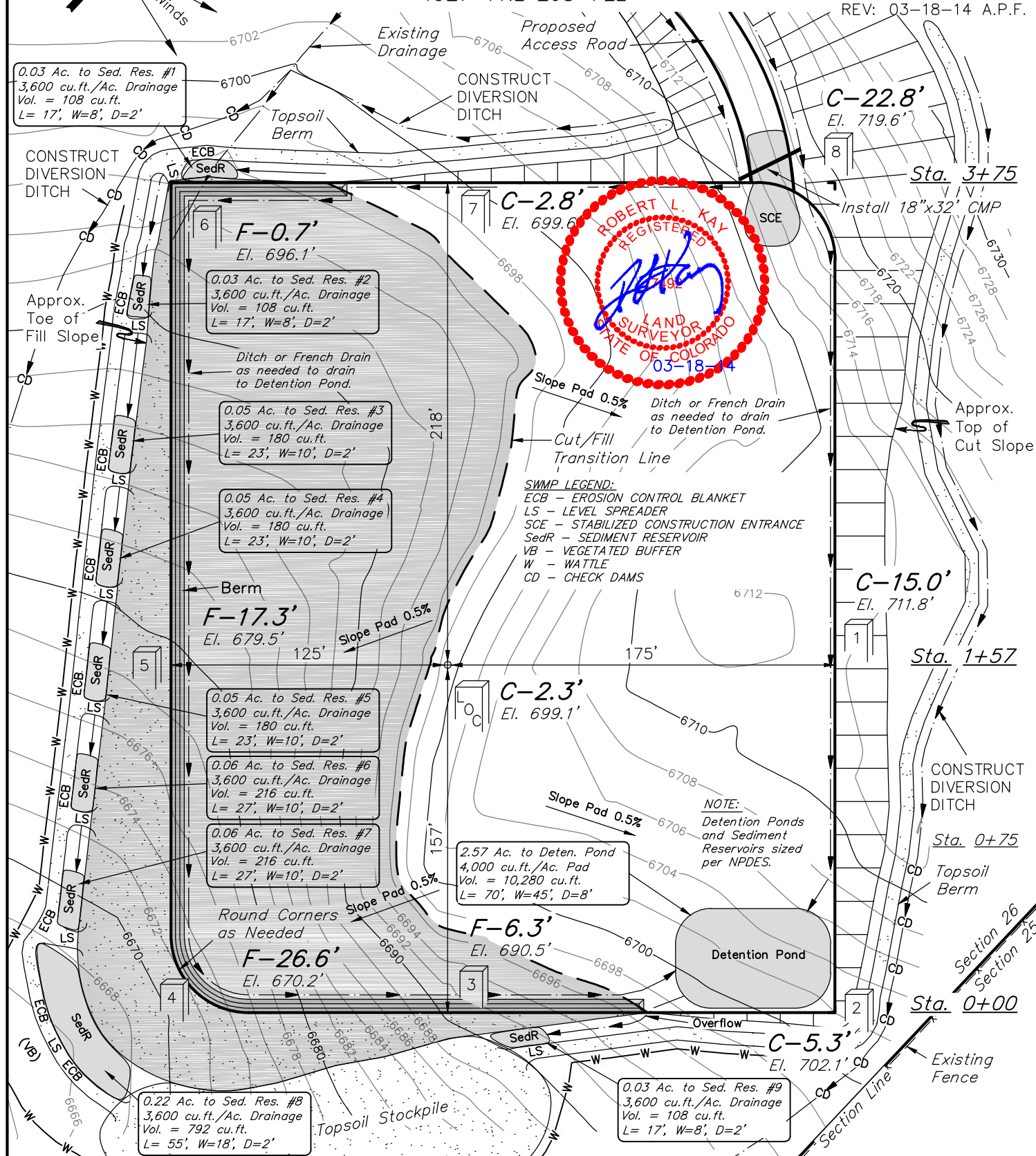


NORTH HAYDEN #1-26  
SECTION 26, T7N, R88W, 6th. P.M.  
1927' FNL 268' FEL

REV: 06-13-13 T.B.  
REV: 03-18-14 A.P.F.

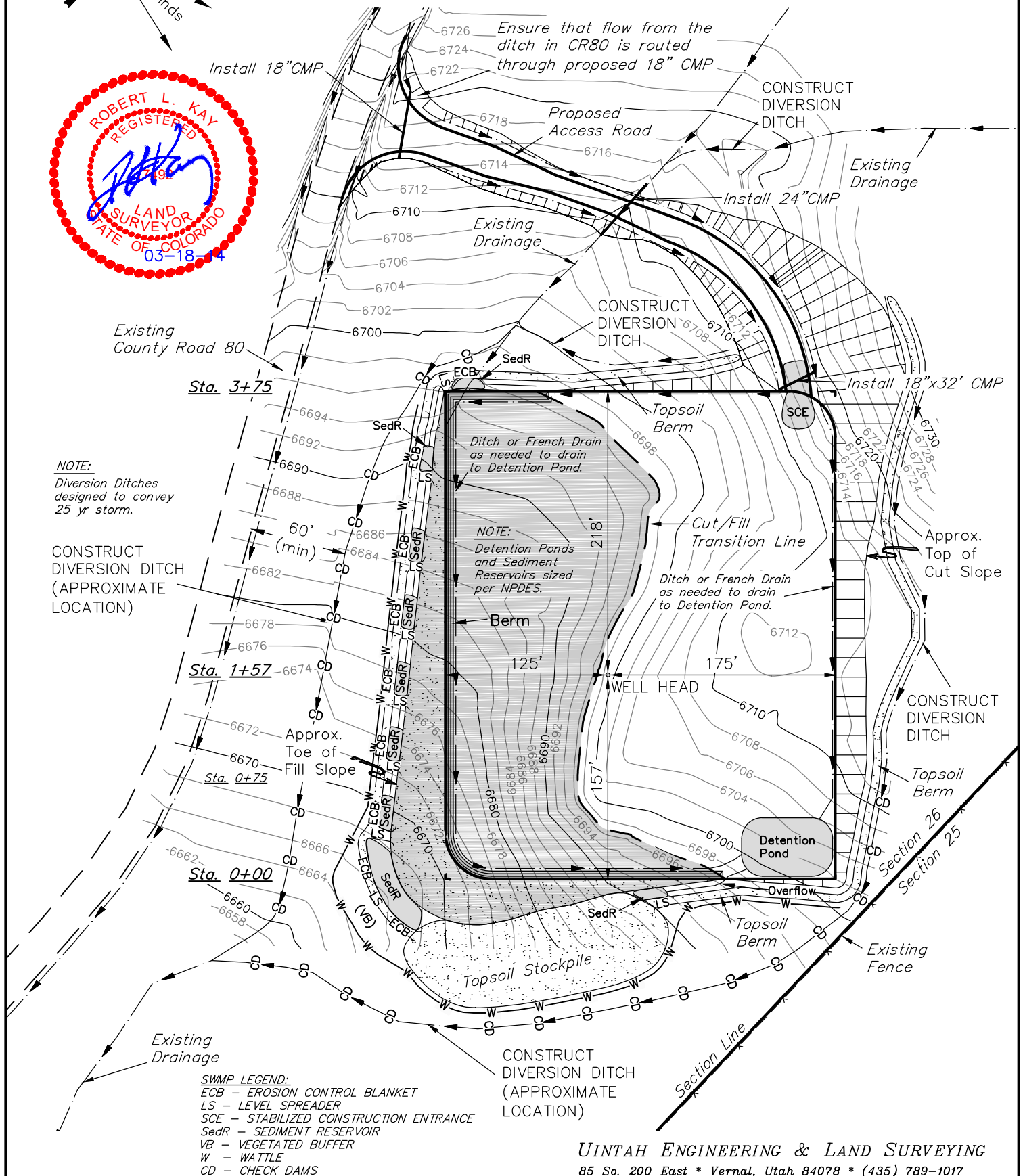


Elev. Ungraded Ground At Loc. Stake = 6699.1'  
FINISHED GRADE ELEV. AT LOC. STAKE = 6696.8'

UINTAH ENGINEERING & LAND SURVEYING  
85 So. 200 East \* Vernal, Utah 84078 \* (435) 789-1017

OVERALL SITE PLAN FOR  
NORTH HAYDEN #1-26  
SECTION 26, T7N, R88W, 6th. P.M.  
1927' FNL 268' FEL

REV: 03-18-14 A.P.F.



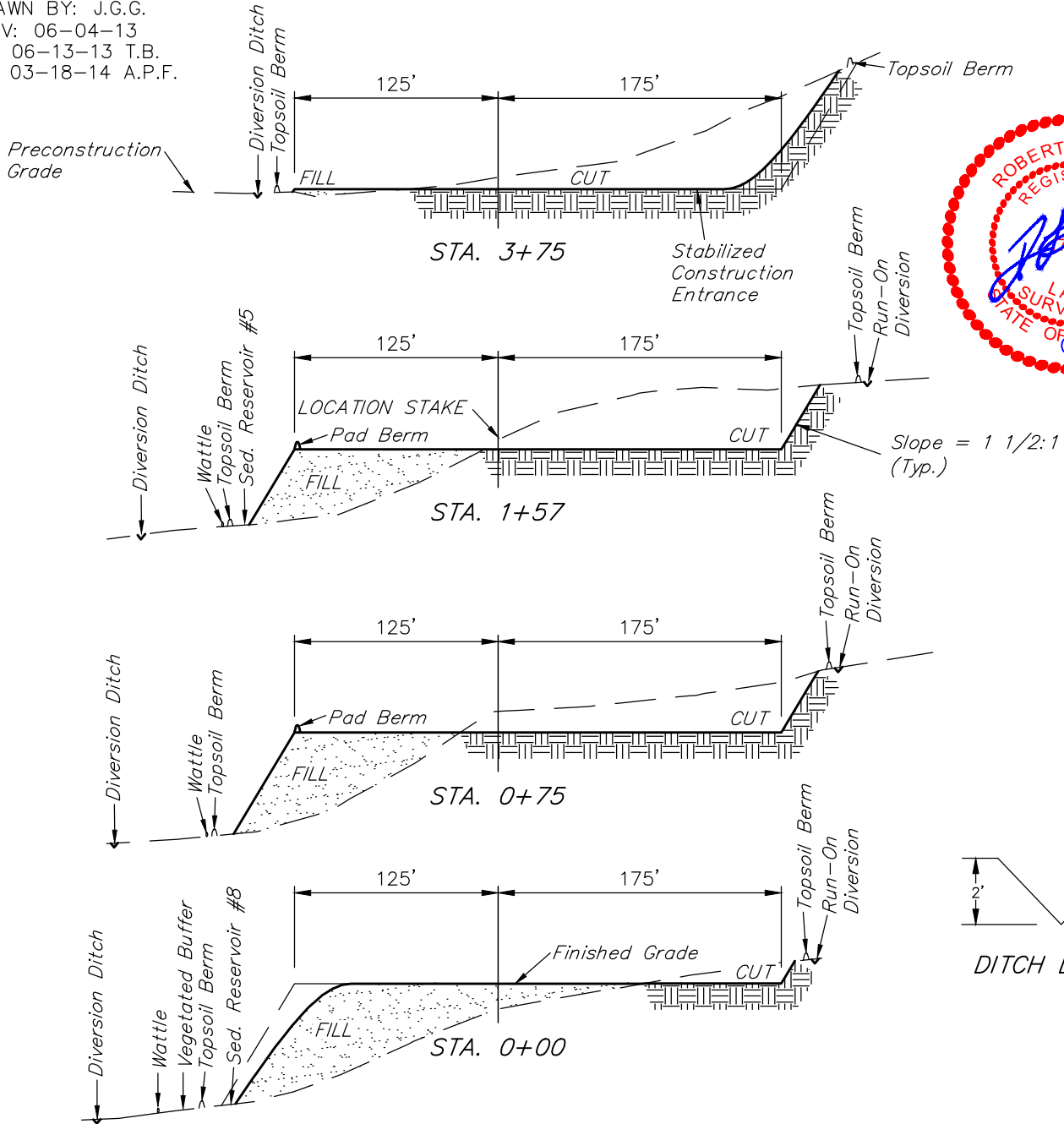
# SWEPI LP

FIGURE #2

## CONSTRUCTION LAYOUT CROSS SECTIONS FOR NORTH HAYDEN #1-26 SECTION 26, T7N, R88W, 6th. P.M. 1927' FNL 268' FEL

X-Section  
Scale  
1" = 40'  
1" = 100'

DATE: 05-16-13  
DRAWN BY: J.G.G.  
REV: 06-04-13  
REV: 06-13-13 T.B.  
REV: 03-18-14 A.P.F.



### NOTE:

Topsoil should not be Stripped Below Finished Grade on Substructure Area.

### APPROXIMATE ACREAGE

WELL SITE DISTURBANCE = ± 4.077 ACRES  
ACCESS ROAD DISTURBANCE = ± 0.588 ACRES  
TOTAL = ± 4.665 ACRES

### \* NOTE:

FILL QUANTITY INCLUDES 5% FOR COMPACTION

### APPROXIMATE YARDAGES

(6") Topsoil Stripping = 2,620 Cu. Yds.  
Remaining Location = 21,720 Cu. Yds.  
TOTAL CUT = 24,340 CU. YDS.  
FILL = 21,720 CU. YDS.

EXCESS MATERIAL = 2,620 Cu. Yds.  
Topsoil = 2,620 Cu. Yds.  
EXCESS UNBALANCE = 0 Cu. Yds.  
(After Interim Rehabilitation)

UINTAH ENGINEERING & LAND SURVEYING  
85 So. 200 East \* Vernal, Utah 84078 \* (435) 789-1017

# SWEPI LP

## TYPICAL RIG LAYOUT FOR

NORTH HAYDEN #1-26  
SECTION 26, T7N, R88W, 6th. P.M.  
1927' FNL 268' FEL

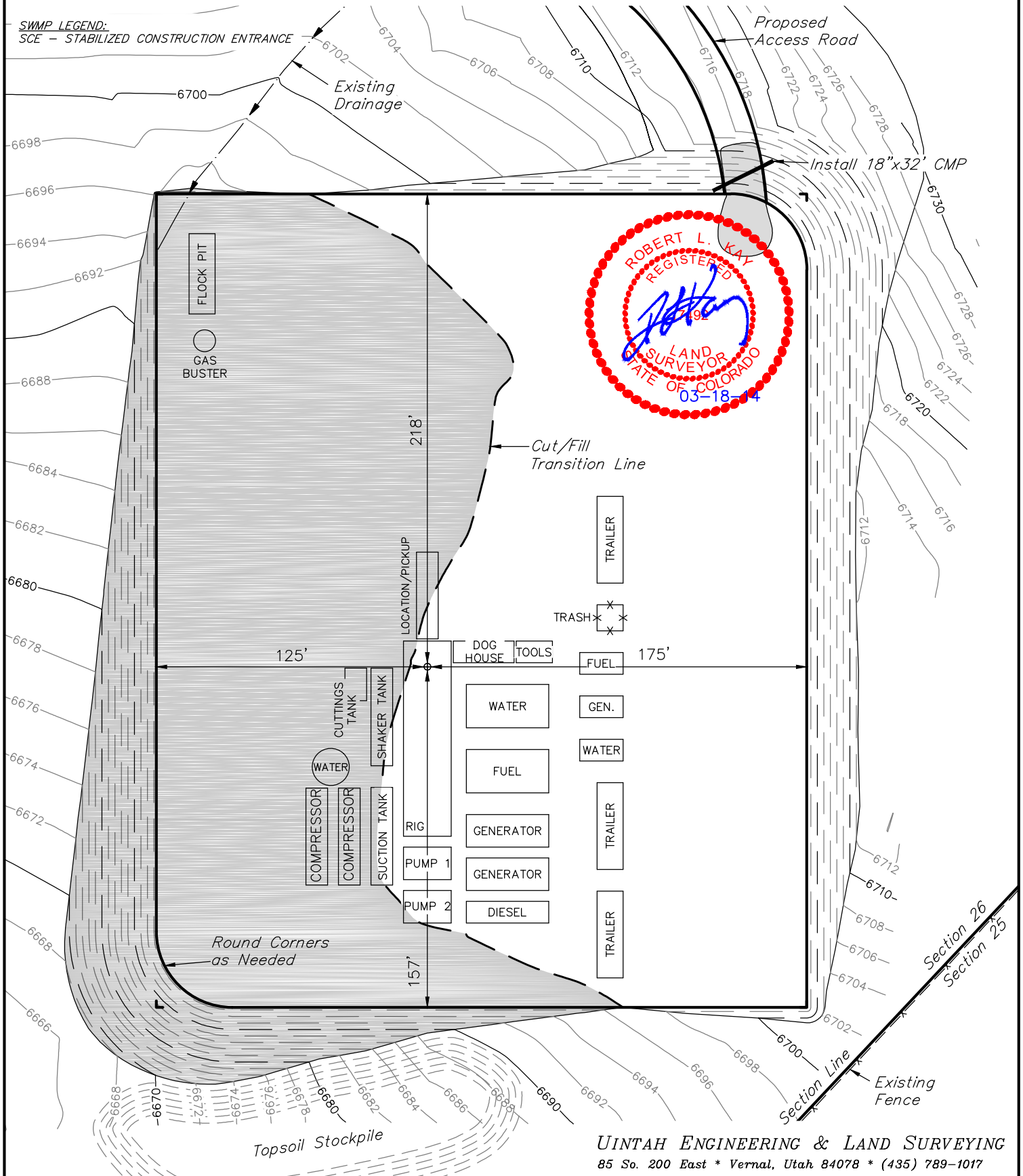
FIGURE #3

SCALE: 1" = 60'

DATE: 06-13-13

DRAWN BY: T.B.

REVISED: 3-18-14 A.P.F.



UINTAH ENGINEERING & LAND SURVEYING

85 So. 200 East \* Vernal, Utah 84078 \* (435) 789-1017



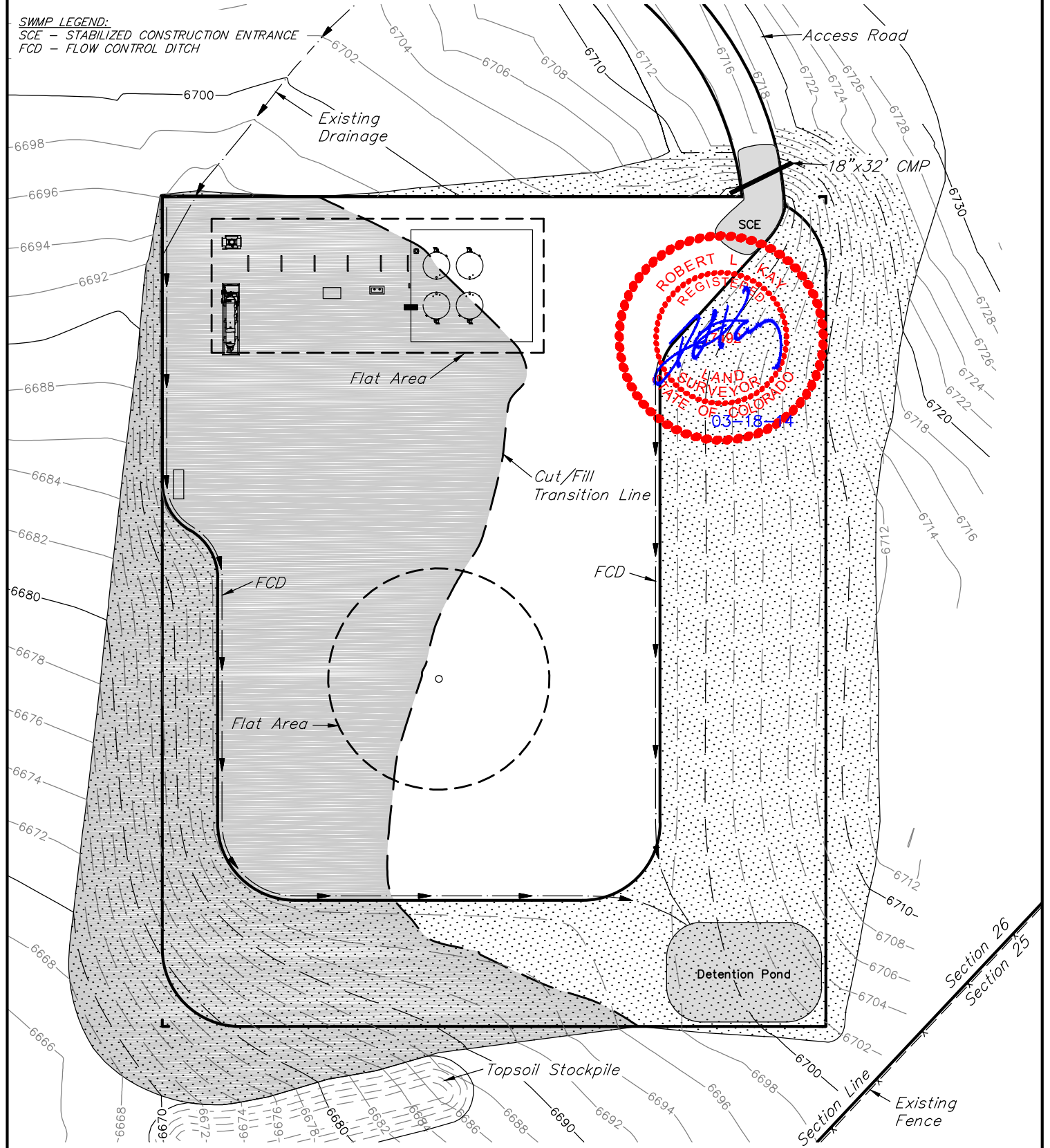
**SWEPI LP**  
**RECLAMATION DIAGRAM FOR**  
**NORTH HAYDEN #1-26**  
**SECTION 26, T7N, R88W, 6th. P.M.**  
**1927' FNL 268' FEL**

**FIGURE #4**

SCALE: 1" = 60'  
 DATE: 06-13-13  
 DRAWN BY: T.B.  
 REVISED: 3-18-14 A.P.F.

**SWMP LEGEND:**

SCE - STABILIZED CONSTRUCTION ENTRANCE  
 FCD - FLOW CONTROL DITCH



RECLAIMED AREA

**APPROXIMATE ACREAGE**  
 UN-RECLAIMED = ± 1.588 ACRES

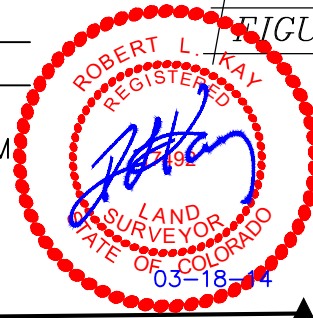
**UINTAH ENGINEERING & LAND SURVEYING**  
 85 So. 200 East \* Vernal, Utah 84078 \* (435) 789-1017

# SWEPI LP

## LOCATION DRAWING FOR

NORTH HAYDEN #1-26  
SECTION 26, T7N, R88W, 6th. P.M.  
1927' FNL 268' FEL

FIGURE #5



Section Line

N89°26'26"E - 2645.00' (Meas.)

1915 Brass Cap  
1.3' High

500' 250' 0' 500'



S C A L E

DATE: 06-13-13

DRAWN BY: T.B.

REVISED: 07-17-13 T.B.

REVISED: 03-14-14 A.P.F.

STATE OF COLORADO

STATE  
OF  
COLORADO

STATE OF COLORADO

1/16 Section Line

### FEATURE TABLE

EXISTING FEATURE	DIRECTION	LENGTH
PUBLIC ROAD (CO. RD. 80)	S63°W	296'
RAILROAD	SOUTH	2.5 MILES
PROPERTY LINE	EAST	268'
SURFACE WATER (POND)	SOUTH	2949'
EXISTING POWER LINE	SOUTH	5688'
BUILDING	SOUTH	6034'

STATE OF COLORADO

STATE OF  
COLORADO

Property Line

26

1/4 Section Line

FLANDERS  
RANCH, LLC

LR  
SMITH  
INVESTMENTS,  
LLC

Existing  
Drainage

Proposed  
Access Road

County Rd 80

Existing  
Fence

1915 Brass Cap  
0.8' High

Existing  
Drainage

### PLANT COMMUNITY

- ☐ DISTURBED GRASSLAND
- ☐ NATIVE GRASSLAND
- ☐ SHRUB LAND
- ☐ PLAINS RIPARIAN
- ☐ MOUNTAIN RIPARIAN
- ☐ FOREST LAND
- ☐ WETLANDS AQUATIC
- ☐ ALPINE
- ☐ OTHER (Describe): \_\_\_\_\_

### CURRENT LAND USE

- CROP LAND: ☐ IRRIGATED ☐ DRY LAND ☐ IMPROVED PASTURE ☐ HAY MEADOW ☐ CRP
- NON-CROP LAND: ☐ RANGELAND ☐ TIMBER ☐ RECREATIONAL ☐ OTHER (Describe) \_\_\_\_\_
- SUBDIVIDED: ☐ INDUSTRIAL ☐ COMMERCIAL ☐ RESIDENTIAL \_\_\_\_\_

### FUTURE LAND USE

- CROP LAND: ☐ IRRIGATED ☐ DRY LAND ☐ IMPROVED PASTURE ☐ HAY MEADOW ☐ CRP
- NON-CROP LAND: ☐ RANGELAND ☐ TIMBER ☐ RECREATIONAL ☐ OTHER (Describe) \_\_\_\_\_
- SUBDIVIDED: ☐ INDUSTRIAL ☐ COMMERCIAL ☐ RESIDENTIAL \_\_\_\_\_

UINTAH ENGINEERING & LAND SURVEYING

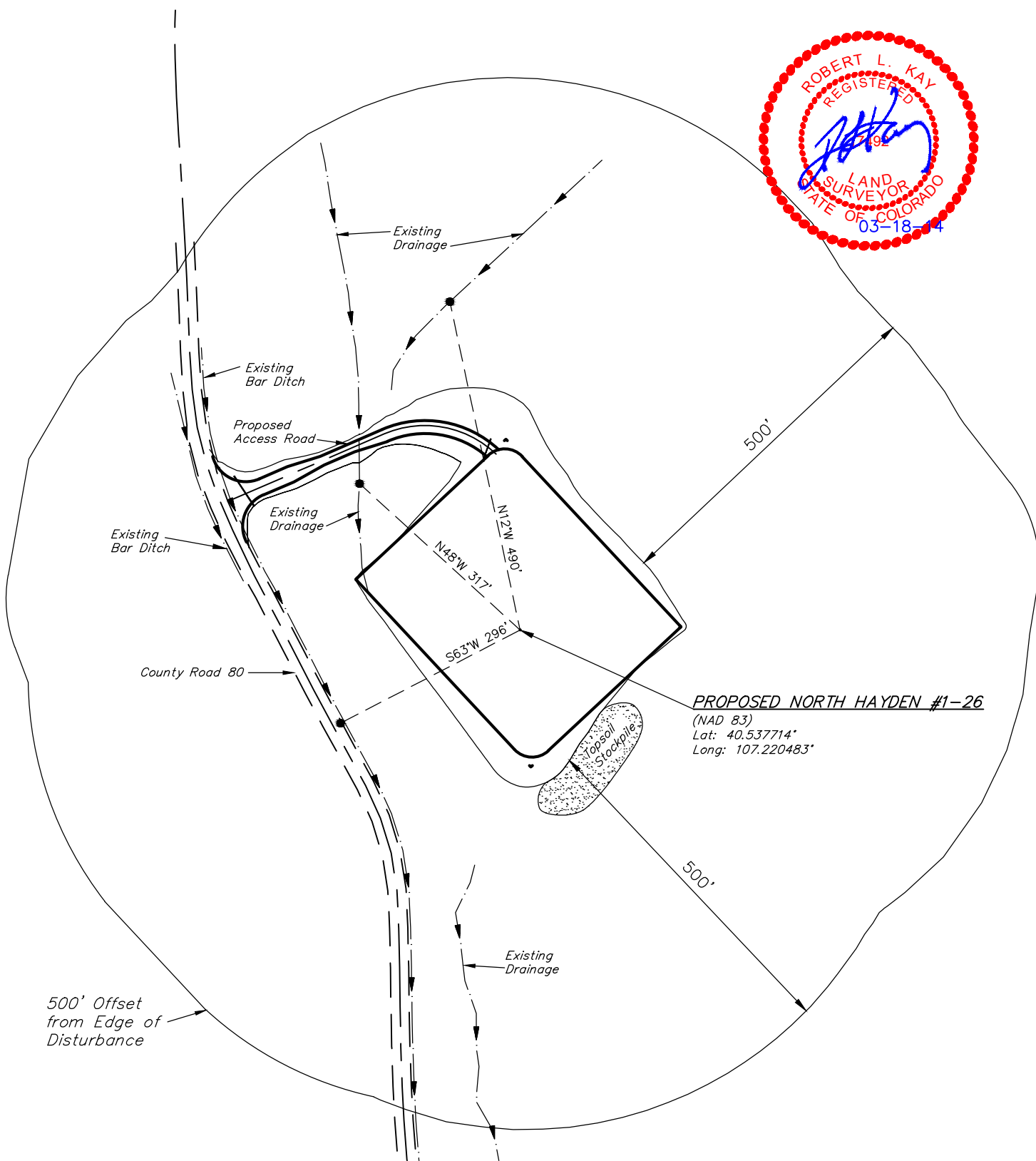
85 So. 200 East \* Vernal, Utah 84078 \* (435) 789-1017



SWEPI LP  
LOCATION DRAWING DETAIL FOR  
NORTH HAYDEN #1-26  
SECTION 26, T7N, R88W, 6th. P.M.  
1927' FNL 268' FEL

FIGURE #5A

SCALE: 1" = 200'  
DATE: 06-13-13  
DRAWN BY: T.B.  
REVISED: 2-10-14 T.B.  
REVISED: 3-18-14 A.P.F.



PROPOSED NORTH HAYDEN #1-26  
(NAD 83)  
Lat: 40.537714°  
Long: 107.220483°