

HALLIBURTON

WILLIAMS PRODUCTION RMT INC EBUSINE

Federal RG 512-14-298
SULFUR CREEK
Rio Blanco County , Colorado

Cement Multiple Stages
15-Dec-2013

Post Job Report

The Road to Excellence Starts with Safety

Sold To #: 300721	Ship To #: 3124398	Quote #:	Sales Order #: 900972085
Customer: WILLIAMS PRODUCTION RMT INC EBUSINE	Customer Rep: Ragsdale, Ted		
Well Name: Federal RG	Well #: 512-14-298	API/UWI #: 05-103-11798	
Field: SULFUR CREEK	City (SAP): MEEKER	County/Parish: Rio Blanco	State: Colorado
Lat: N 39.881 deg. OR N 39 deg. 52 min. 49.8 secs.	Long: W 108.367 deg. OR W -109 deg. 37 min. 59.12 secs.		
Contractor: CYCLONE 29	Rig/Platform Name/Num: Cyclone 29		
Job Purpose: Cement Multiple Stages			
Well Type: Development Well	Job Type: Cement Multiple Stages		
Sales Person:	Srvc Supervisor: DEUSSEN, EDWARD	MBU ID Emp #: 485182	

Job Personnel

HES Emp Name	Exp Hrs	Emp #	HES Emp Name	Exp Hrs	Emp #	HES Emp Name	Exp Hrs	Emp #
ANDERSON, ADAM S	20.5	456683	Banks, Brent	20.5	371353	DEUSSEN, EDWARD Eric	20.5	485182
McIntosh, Robert	20.5	547652	Blanscet, Taylor	20.5	555417			

Equipment

HES Unit #	Distance-1 way	HES Unit #	Distance-1 way	HES Unit #	Distance-1 way	HES Unit #	Distance-1 way
11583932	60	11808839	60	10995027	60	10973571	60

Job Hours

Date	On Location Hours	Operating Hours	Date	On Location Hours	Operating Hours	Date	On Location Hours	Operating Hours
12/15/13	18.5	9.5	12/16/13	2.0	1.5			

TOTAL Total is the sum of each column separately

Job

Job Times

Formation Name	Formation Depth (MD)	Top	Bottom	Called Out	Date	Time	Time Zone
Form Type			BHST	On Location	14 - Dec - 2013	21:30	MST
Job depth MD	3414. ft		Job Depth TVD	On Location	15 - Dec - 2013	03:30	MST
Water Depth			Wk Ht Above Floor	Job Started	15 - Dec - 2013	08:26	MST
Perforation Depth (MD)	From	To	5. ft	Job Completed	15 - Dec - 2013	23:57	MST
				Departed Loc	16 - Dec - 2013	02:00	MST

Well Data

Description	New / Used	Max pressure psig	Size in	ID in	Weight lbm/ft	Thread	Grade	Top MD ft	Bottom MD ft	Top TVD ft	Bottom TVD ft
-------------	------------	-------------------	---------	-------	---------------	--------	-------	-----------	--------------	------------	---------------

Tools and Accessories

Type	Size	Qty	Make	Depth	Type	Size	Qty	Make	Depth	Type	Size	Qty	Make
Guide Shoe					Packer					Top Plug			
Float Shoe					Bridge Plug					Bottom Plug			
Float Collar					Retainer					SSR plug set			
Insert Float										Plug Container	9 5/8"	1	HES
Stage Tool										Centralizers			

Miscellaneous Materials

Gelling Agt	Conc	Surfactant	Conc	Acid Type	Qty	Conc	%
Treatment Fld	Conc	Inhibitor	Conc	Sand Type	Size	Qty	

Fluid Data

Stage/Plug #: 1

Fluid #	Stage Type	Fluid Name	Qty	Qty uom	Mixing Density lbm/gal	Yield ft3/sk	Mix Fluid Gal/sk	Rate bbl/min	Total Mix Fluid Gal/sk
---------	------------	------------	-----	---------	------------------------	--------------	------------------	--------------	------------------------

Stage/Plug #: 1

Fluid #	Stage Type	Fluid Name	Qty	Qty uom	Mixing Density uom	Yield uom	Mix Fluid uom	Rate uom	Total Mix Fluid uom
---------	------------	------------	-----	---------	--------------------	-----------	---------------	----------	---------------------

Stage/Plug #: 1									
Fluid #	Stage Type	Fluid Name	Qty	Qty uom	Mixing Density lbm/gal	Yield ft ³ /sk	Mix Fluid Gal/sk	Rate bbl/min	Total Mix Fluid Gal/sk
1	Fresh Water Spacer		40.00	bbl	8.33	.0	.0	4.0	
2	1st Stage HLC Lead Cement	ECONOCEM (TM) SYSTEM (452992)	600.0	sacks	12.8	1.77	9.34	8.0	9.34
	0.25 lbm	POLY-E-FLAKE (101216940)							
	0.35 %	HR-5, 50 LB SK (100005050)							
	9.34 Gal	FRESH WATER							
3	1st Stage Varicem Tail Cement	VARICEM (TM) CEMENT (452009)	225.0	sacks	12.8	1.96	10.95	8.0	10.95
	0.3 lbm	POLY-E-FLAKE (101216940)							
	10.95 Gal	FRESH WATER							
4	Displacement		267.00	bbl	8.33	.0	.0	10.0	
5	Fresh Water Spacer		20.00	bbl	8.33	.0	.0	4.0	
6	2nd Stage VariCem Cement	VARICEM (TM) CEMENT (452009)	735.0	sacks	12.8	1.96	10.95	8.0	10.95
	0.3 lbm	POLY-E-FLAKE (101216940)							
	10.95 Gal	FRESH WATER							
7	Displacement		98.00	bbl	8.33	.0	.0	10.0	
8	HalCem Top Out	HALCEM (TM) SYSTEM (452986)	700	sacks	15.8	1.15	4.98	2.0	4.98
	4.98 Gal	FRESH WATER							
Calculated Values		Pressures		Volumes					
Displacement	364.9	Shut In: Instant		Lost Returns		Cement Slurry	667.6	Pad	
Top Of Cement	SURFACE	5 Min		Cement Returns	150	Actual Displacement	364.9	Treatment	
Frac Gradient		15 Min		Spacers	60	Load and Breakdown		Total Job	1092.5
Rates									
Circulating		Mixing	8.0	Displacement	10.0	Avg. Job	8.0		
Cement Left In Pipe	Amount	26.1 ft	Reason	Shoe Joint					
Frac Ring # 1 @	ID	Frac ring # 2 @	ID	Frac Ring # 3 @	ID	Frac Ring # 4 @	ID		
The Information Stated Herein Is Correct				Customer Representative Signature					

The Road to Excellence Starts with Safety

Sold To #: 300721	Ship To #: 3124398	Quote #:	Sales Order #: 900972085
Customer: WILLIAMS PRODUCTION RMT INC EBUSINE	Customer Rep: Ragsdale, Ted		
Well Name: Federal RG	Well #: 512-14-298	API/UWI #: 05-103-11798	
Field: SULFUR CREEK	City (SAP): MEEKER	County/Parish: Rio Blanco	State: Colorado
Legal Description:			
Lat: N 39.881 deg. OR N 39 deg. 52 min. 49.8 secs.		Long: W 108.367 deg. OR W -109 deg. 37 min. 59.12 secs.	
Contractor: CYCLONE 29	Rig/Platform Name/Num: Cyclone 29		
Job Purpose: Cement Multiple Stages	Ticket Amount:		
Well Type: Development Well	Job Type: Cement Multiple Stages		
Sales Person:	Srvc Supervisor: DEUSSEN, EDWARD	MBU ID Emp #: 485182	

Activity Description	Date/Time	Cht #	Rate bbl/min	Volume bbl		Pressure psig		Comments
				Stage	Total	Tubing	Casing	
Call Out	12/14/2013 21:30							
Pre-Convoy Safety Meeting	12/14/2013 23:30							ALL HES PERSONNEL
Crew Leave Yard	12/14/2013 23:45							1 ELITE, 2 660s, 1 PICKUP
Arrive At Loc	12/15/2013 03:30							RIG STILL RUNNING CASING
Assessment Of Location Safety Meeting	12/15/2013 03:45							
Pre-Rig Up Safety Meeting	12/15/2013 05:45							ALL HES PERSONNEL
Rig-Up Equipment	12/15/2013 06:00							
Pre-Job Safety Meeting	12/15/2013 08:00							ALL HES PERSONNEL AND RIG CREW
Start Job	12/15/2013 08:26							TD 3421', TP 3414', SJ 26.10', MUD 8.8 PPG, MSC TOOL @ 1271.85', 14 3/4" OH TO 1200', 13 1/2" OH TO 3421', 9 5/8" CSG 36 LB J-55
Other	12/15/2013 08:27		2	2			297.0	FILL LINES
Pressure Test	12/15/2013 08:32							PRESSURED UP TO 3096 PSI - PRESSURE HELD
Pump Spacer 1	12/15/2013 08:36		4	40			242.0	FRESH WATER
Pump Lead Cement	12/15/2013 08:46		8	189.1			644.0	ADD 52.5 LBS TUFF FIBER TO 1ST 100 BBLs - 600 SKS, 12.8 PPG, 1.77 YIELD, 9.34 GAL/SK
Activity Description	Date/Time	Cht	Rate bbl/min	Volume bbl		Pressure psig		Comments

Sold To #: 300721

Ship To #: 3124398

Quote #:

Sales Order #: 900972085

SUMMIT Version: 7.3.0109

Thursday, December 19, 2013 02:21:00

		#		Stage	Total	Tubing	Casing	
Pump Tail Cement	12/15/2013 09:11		8	78.5			540.0	ADD 52.5 L BS TUFF FIBER PER COMPANY REP - 225 SKS, 12.8 PPG, 1.96 YIELD, 10.95 GAL/SK
Shutdown	12/15/2013 09:21							WASH UP ON TOP OF PLUG
Drop Top Plug	12/15/2013 09:25							RIG SUPPLIED PLUG
Pump Displacement	12/15/2013 09:27		10	266.6			1260.0	FRESH WATER
Slow Rate	12/15/2013 09:37		2	20			162.0	SLOW AS PLUG PASSED THROUGH TOOL
Slow Rate	12/15/2013 09:58		3	10			740.0	GOOD RETURNS THROUGHOUT JOB
Bump Plug	12/15/2013 10:02						810.0	PRESSURED UP TO 1308 PSI
Check Floats	12/15/2013 10:06							FLOATS HELD - GOT 1 1/2 BBL BACK
Drop Opening Device For Multiple Stage Cementer	12/15/2013 10:10							RIG SUPPLIED OPENING DEVICE - WAIT 10 MINUTES FOR DEVICE TO FALL
Pump Water	12/15/2013 10:21		4	20			278.0	OPENED TOOL AT 700 PSI
Circulate Well	12/15/2013 10:27							RIG CIRCULATED FOR 1 1/2 HR - 50 BBLS CEMENT TO SURFACE
Pump Spacer 1	12/15/2013 11:59		4	20			109.0	START STAGE 2 - FRESH WATER
Pump Tail Cement	12/15/2013 12:06		8	256.6			521.0	735 SKS, 12.8 PPG, 1.96 YIELD, 10.95 GAL/SK
Shutdown	12/15/2013 12:42							
Drop Plug	12/15/2013 12:45							RIG SUPPLIED CLOSING DEVICE
Pump Displacement	12/15/2013 12:47		10	98.3			782.0	FRESH WATER
Slow Rate	12/15/2013 12:57		2	10			327.0	GOOD RETURNS THROUGHOUT JOB
Bump Plug	12/15/2013 13:03						334.0	PRESSURED UP TO 1350 PSI TO CLOSE TOOL
Release Casing Pressure	12/15/2013 13:06							TOOL CLOSED - GOT 1 BBL BACK
End Job	12/15/2013 13:08							100 BBLS CEMENT TO SURFACE
Other	12/15/2013 13:10							STAND BY FOR TOPOUTS TO FOLLOW

Sold To # : 300721

Ship To # :3124398

Quote # :

Sales Order # : 900972085

SUMMIT Version: 7.3.0109

Thursday, December 19, 2013 02:21:00

Cementing Job Log

Activity Description	Date/Time	Cht #	Rate bbl/min	Volume bbl		Pressure psig		Comments
				Stage	Total	Tubing	Casing	
Start Job	12/15/2013 17:59							TOPOUT - RIG RAN 888' 2" TUBING DOWN ANNULUS - RG 42-15-298
Pump Cement	12/15/2013 17:59		2	71.7			320.0	350 SKS, 15.8 PPG, 1.15 YIELD, 4.98 GAL/SK - SAW RETURNS, NO CEMENT TO SURFACE
Pump Cement	12/15/2013 18:36		2	7			105.0	2ND TRUCK - MIXED UP TUB, PUMPED ADDITIONAL 7 BBLS CEMENT DOWN BEFORE SHUTTING DOWN PER COMPANY REP - APPROX 34 SKS
Shutdown	12/15/2013 18:36							RIG TO TRIP TUBING OUT OF ANNULUS AND SWAP OVER TO ANOTHER HOLE FOR TOPOUT PER COMPANY REP
Other	12/15/2013 18:37							FOR RG 41-15-298 - 6 HOURS LABOR, 384 SKS "G" NEAT CEMENT
Start Job	12/15/2013 23:24							TOPOUT #2 - RIG RAN 168' 2" TUBING DOWN ANNULUS - RG 313-14-298
Pump Cement	12/15/2013 23:25		2	64.7			170.0	316 SKS, 15.8 PPG, 1.15 YIELD, 4.98 GAL/SK
Shutdown	12/15/2013 23:55							FOR RG 313-14-298 - 5 HOURS LABOR, 316 SKS "G" NEAT CEMENT
End Job	12/15/2013 23:57							NO BOOSTER PUMP OR HOSE / NO INJECTROL OR SUGAR / 12 ADD HOURS
Pre-Rig Down Safety Meeting	12/16/2013 00:15							ALL HES PERSONNEL
Rig-Down Equipment	12/16/2013 00:30							
Pre-Convoy Safety Meeting	12/16/2013 01:45							ALL HES PERSONNEL

Sold To # : 300721

Ship To # :3124398

Quote # :

Sales Order # : 900972085

SUMMIT Version: 7.3.0109

Thursday, December 19, 2013 02:21:00

HALLIBURTON***Cementing Job Log***

Activity Description	Date/Time	Cht #	Rate bbl/ min	Volume bbl		Pressure psig		Comments
				Stage	Total	Tubing	Casing	
Crew Leave Location	12/16/2013 02:00							THANK YOU FOR USING HALLIBURTON - ED DEUSSEN AND CREW

Sold To # : 300721

Ship To # :3124398

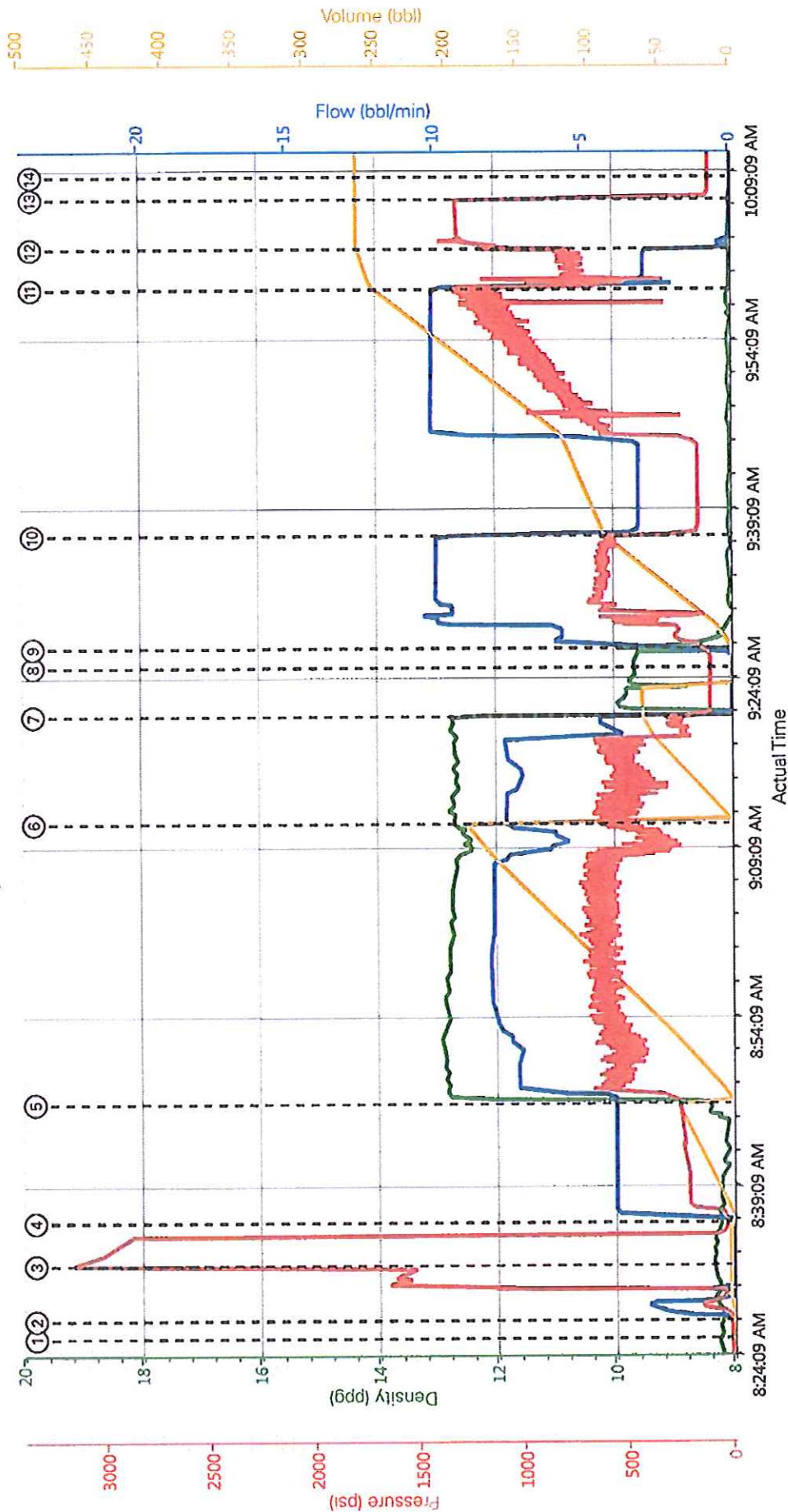
Quote # :

Sales Order # : 900972085

SUMMIT Version: 7.3.0109

Thursday, December 19, 2013 02:21:00

WPX - RU 512-14-298 - SURFACE STAGE 1



DH Density (ppg) Comb Pump Rate (bbl/min) PS Pump Press (psi) Pump Stg Tot (bbl)

- ① Start Job 8.22;0;13.77;0
- ② Fill Lines 8.21;0;14.7;0
- ③ Pressure Test 8.32;0;3088.82;3.22
- ④ Pump H2O Spacer 8.26;0;33.45;0
- ⑤ Pump Lead Cement 10.75;3.98;279.08;1.23
- ⑥ Pump Tail Cement 12.68;7.64;603.46;1.21
- ⑦ Shutdown/Wash Up 7.73;0;103.77;63.89
- ⑧ Drop Plug 9.69;0;104.7;0
- ⑨ Pump Displacement 8.61;4.25;171.27;1.69
- ⑩ Slow Rate through Tool 8.05;3.34;166.58;91.51
- ⑪ Slow Rate 8.01;4.16;818.15;253.84
- ⑫ Bump Plug 8.07;0.26;1163.16;263.46
- ⑬ Check Floats 7.95;0;111.27;263.6
- ⑭ End Job 7.96;0;111.27;263.6

▼ **HALLIBURTON** | iCem® Service

Created: 2013-12-15 11:06:23, Version: 3.0.121

Edit

Customer: WPX ENERGY ROCKY MOUNTAIN LLC-EBUS

Job Date: 12/15/2013 8:11:01 AM

Well: RU 512-14-298

Representative: Beauda Oaks

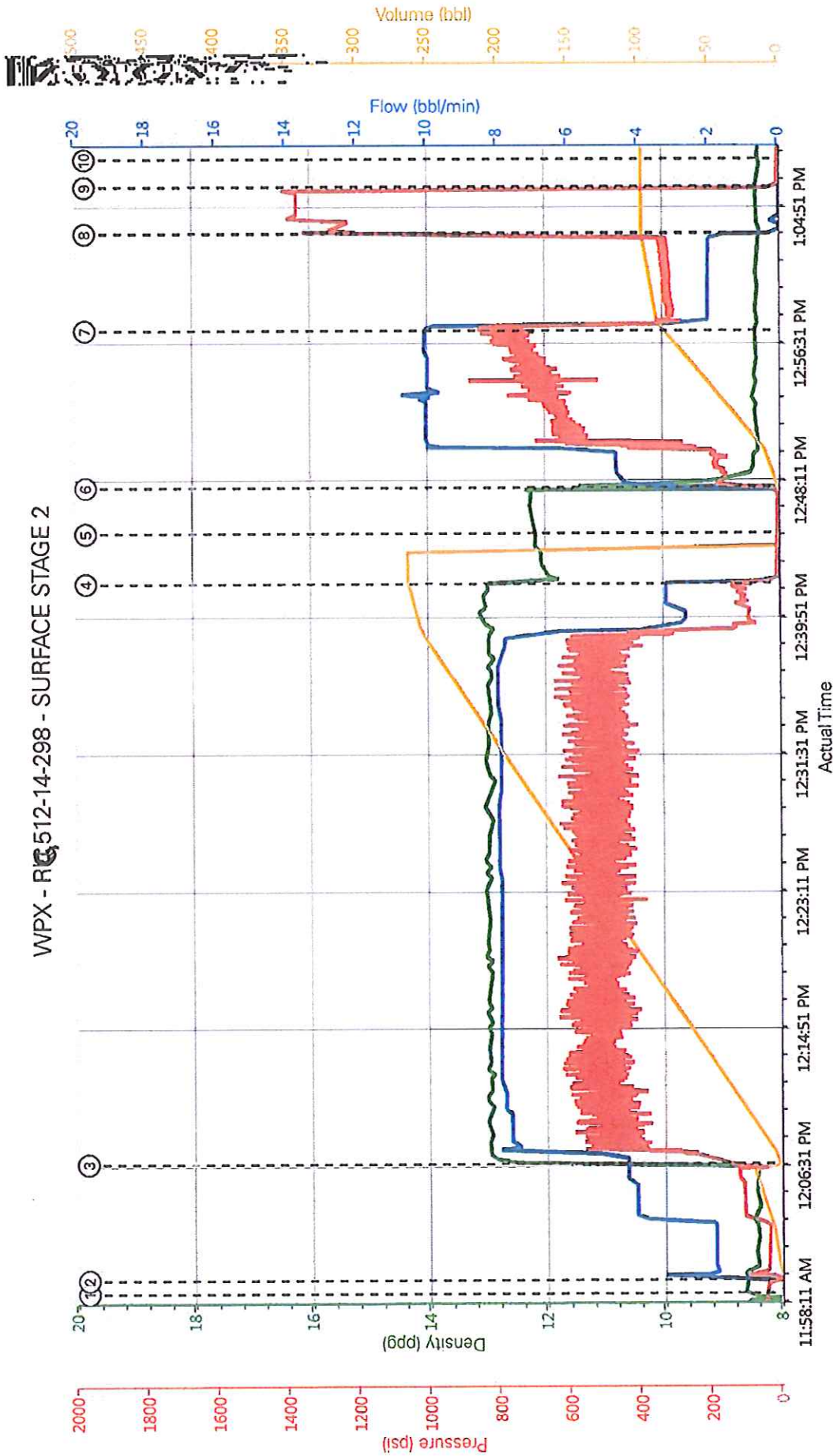
Sales Order #: 900972085

Elite #3: Ed Deussen / Brent Banks

1.1 Job Event Log

Type	Seq. No.	Activity	Graph Label	Date	Time	Source	Pass-Side Pump Pressure (psf)	Downhole Density (ppg)	Combined Pump Rate (bbl/min)	Pump Stage Total (bbl)	Comment
Event	1	Start Job	Start Job	12/15/2013	08:26:00	USER	13.77	8.22	0.00	0.0	
Event	2	Prime Pumps	Fill Lines	12/15/2013	08:27:37	USER	14.70	8.21	0.00	0.0	
Event	3	Test Lines	Pressure Test	12/15/2013	08:32:30	USER	3088.82	8.32	0.00	3.2	
Event	4	Pump Spacer	Pump H2O Spacer	12/15/2013	08:36:18	USER	33.45	8.26	0.00	0.0	
Event	5	Pump Lead Cement	Pump Lead Cement	12/15/2013	08:46:47	USER	279.08	10.75	3.98	1.2	
Event	6	Pump Tail Cement	Pump Tail Cement	12/15/2013	09:11:39	USER	603.46	12.68	7.64	1.2	
Event	7	Shutdown	Shutdown/Wash Up	12/15/2013	09:21:08	USER	103.77	7.73	0.00	63.9	
Event	8	Drop Plug	Drop Plug	12/15/2013	09:25:26	USER	104.70	9.69	0.00	0.0	
Event	9	Pump Displacement	Pump Displacement	12/15/2013	09:27:08	USER	171.27	8.61	4.25	1.5	
Event	10	Slow Rate	Slow Rate through Tool	12/15/2013	09:37:08	USER	166.58	8.05	3.34	91.5	
Event	11	Slow Rate	Slow Rate	12/15/2013	09:58:59	USER	818.15	8.01	4.16	253.8	
Event	12	Bump Plug	Bump Plug	12/15/2013	10:02:35	USER	1163.16	8.07	0.26	263.5	
Event	13	Check Floats	Check Floats	12/15/2013	10:06:59	USER	111.27	7.95	0.00	263.6	
Event	14	End Job	End Job	12/15/2013	10:09:00	USER	111.27	7.96	0.00	263.6	

WPX - RU 512-14-298 - SURFACE STAGE 2



DH Density (ppg) Comb Pump Rate (bbl/min) PS Pump Press (psi) Pump Stg Tot (bbl)

- ① Start Job 8.69;0.42;25.0
- ② Pump H2O Spacer 8.61;3.3;31.87;0.34
- ③ Pump Tail Cement 12.81;4.37;195.94;2.31
- ④ Shutdown 11.69;0.9;44.264.31
- ⑤ Drop Closing Plug 12.16;0.6;56.0
- ⑥ Pump Displacement 10.02;4.43;180.111
- ⑦ Slow Rate 8.4;10.08;850.33;35.33
- ⑧ Bump Plug 8.34;0.1238.46;97.98
- ⑨ Check Tool Closed 8.43;0.6;56;98.03
- ⑩ End Job 8.4;0.5;62.93.03

▼ **HALLIBURTON** | iCem® Service

Created: 2013-12-15 13:23:46, Version: 3.0.121

Edit

Customer: WPX ENERGY ROCKY MOUNTAIN LLC-EBUS

Job Date: 12/15/2013 11:56:36 AM

Well: RU 512-14-298

Representative: Beaudé Oaks

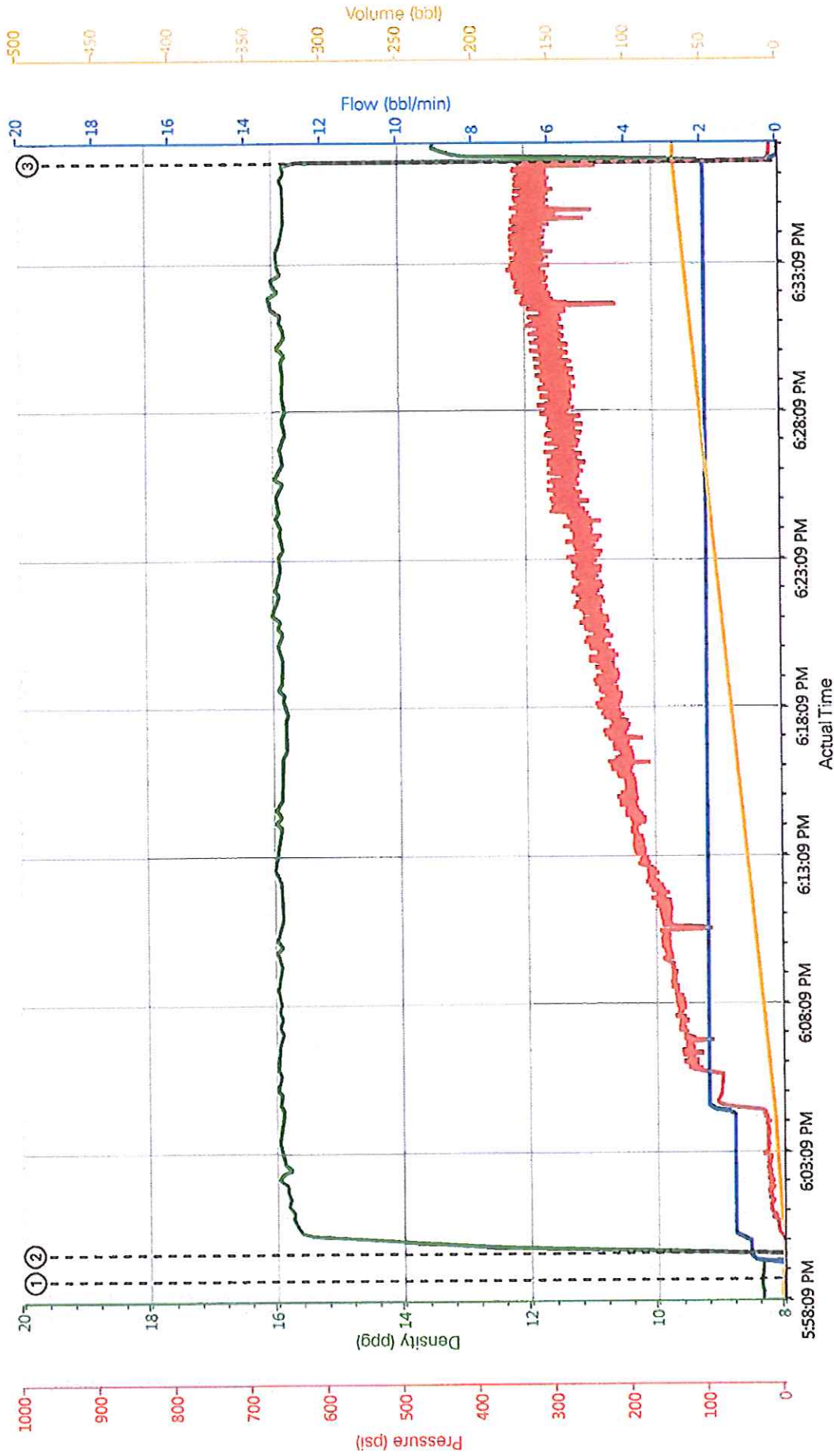
Sales Order #: 900972085

Elite #3: Ed Deussen / Brent Banks

2.1 Job Event Log

Type	Seq- No.	Activity	Graph Label	Date	Time	Source	Pass-Side Pump Pressure (psi)	Downhole Density (ppg)	Combined Pump Rate (bbl/min)	Pump Stage Total (bbl)	Comment
Event	1	Start Job	Start Job	12/15/2013	11:59:00	USER	42.25	8.69	0.00	0.0	
Event	2	Pump Spacer	Pump H2O Spacer	12/15/2013	11:59:49	USER	31.87	8.61	3.30	0.3	
Event	3	Pump Tail Cement	Pump Tail Cement	12/15/2013	12:06:52	USER	195.94	12.81	4.37	2.3	
Event	4	Shutdown	Shutdown	12/15/2013	12:42:08	USER	8.44	11.69	0.00	264.3	
Event	5	Drop Plug	Drop Closing Plug	12/15/2013	12:45:11	USER	6.56	12.16	0.00	0.0	
Event	6	Pump Displacement	Pump Displacement	12/15/2013	12:47:57	USER	180.00	10.02	4.43	1.1	
Event	7	Slow Rate	Slow Rate	12/15/2013	12:57:32	USER	850.33	8.40	10.08	85.4	
Event	8	Bump Plug	Bump Plug	12/15/2013	13:03:28	USER	1238.46	8.34	0.00	98.0	
Event	9	Check Floats	Check Tool Closed	12/15/2013	13:06:18	USER	6.56	8.43	0.00	98.0	
Event	10	End Job	End Job	12/15/2013	13:08:00	USER	5.62	8.40	0.00	98.0	

WPX - RG 42-15-298 TOPOUT



DH Density (ppg) Comb Pump Rate (bbl/min) PS Pump Press (psi) Pump Stg Tot (bbl)

① Start Job 8:34:00-6:23:18 ② Pump Tail Cement 10.82:089-2.48:15 ③ Shutdown 11.54:013.46:69 24

HALLIBURTON | iCem® Service

Created: 2013-12-15 19:40:02, Version: 3.0.121

Edit

Customer: WPX ENERGY ROCKY MOUNTAIN LLC-EBUS

Job Date: 12/15/2013 5:35:30 PM

Well: RG 512-14-298

Representative: Beaudie Oaks

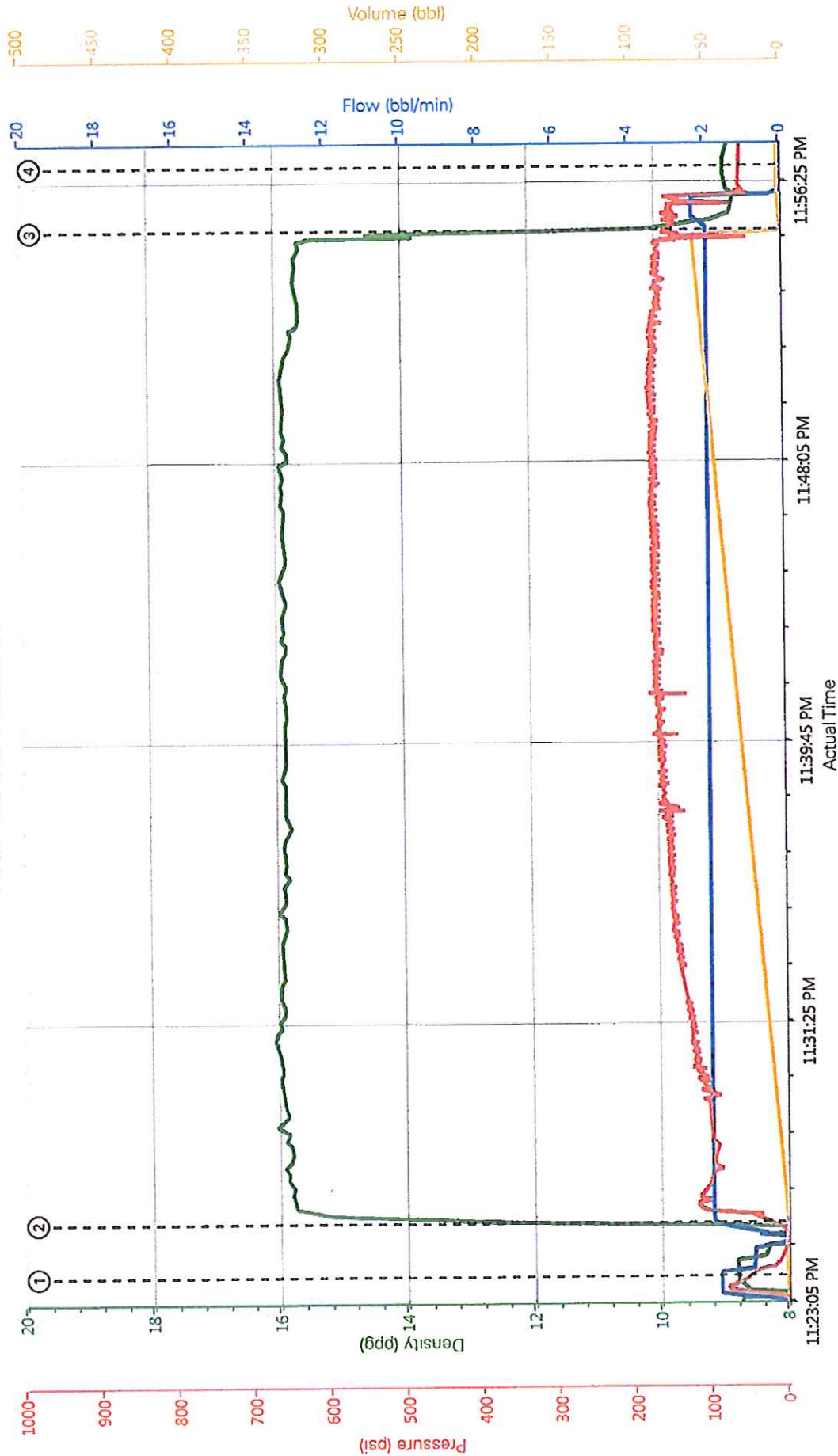
Sales Order #: 900972085

Elite #3: Ed Deussen / Brent Banks

1.1 Job Event Log

Type	Seq. No.	Activity	Graph Label	Date	Time	Source	Pass-Side Pump Pressure (psi)	Downhole Density (ppg)	Combined Pump Rate (bbl/min)	Pump Stage Total (bbl)	Comment
Event	1	Start Job	Start Job	12/15/2013	17:59:00	USER	-6.23	8.34	0.00	1.8	
Event	2	Pump Cement	Pump Cement	12/15/2013	17:59:54	USER	-2.48	10.82	0.89	0.3	
Event	3	Shutdown	Shutdown	12/15/2013	18:36:42	USER	13.46	11.54	0.00	69.2	

WPX - RG 313-14-298 TOPOUT



— DH Density (ppg)
 — Comb Pump Rate (bbl/min)
 — PS Pump Press (psi)
 — Pump Stg Tot (bbl)

① Start Job 8.79; 1.8; 46.82; 1.37
 ② Pump Cement 13.32; 1.99; 30.88; 0.72
 ③ Shutdown 9.77; 1.98; 142.45; 0.53
 ④ End Job 8.89; 0.54; 32.3; 6.6

HALLIBURTON | iCem® Service

Created: 2013-12-16 00:30:00, Version: 3.0.121

Edit

Well: RG 512-14-298

Job Date: 12/15/2013 11:10:25 PM

Customer: WPX ENERGY ROCKY MOUNTAIN LLC-EBUS

Elite #3: Ed Deussen / Brent Banks

Sales Order #: 900972065

Representative: Beade Oaks

1.1 Job Event Log

Type	Seq. No.	Activity	Graph Label	Date	Time	Source	Pass-Side Pump Pressure (psi)	Downhole Density (ppg)	Combined Pump Rate (bbl/min)	Pump Stage Total (bbl)	Comment
Event	1	Start Job	Start Job	12/15/2013	23:24:00	USER	46.82	8.79	1.80	1.4	
Event	2	Pump Cement	Pump Cement	12/15/2013	23:25:35	USER	30.88	13.32	1.99	0.7	
Event	3	Shutdown	Shutdown	12/15/2013	23:55:05	USER	142.45	9.77	1.98	0.5	
Event	4	End Job	End Job	12/15/2013	23:57:00	USER	54.32	8.89	0.00	2.7	

HALLIBURTON

Water Analysis Report

Company: WPX
Submitted by: ED DEUSSEN
Attention: J.TROUT
Lease: RG
Well #: 512-14-298

Date: 12/15/2013
Date Rec.: 12/15/2013
S.O.#: 900972085
Job Type: 9 5/8 SURFACE

Specific Gravity	<i>MAX</i>	<i>1</i>
pH	<i>8</i>	<i>7</i>
Potassium (K)	<i>5000</i>	<i>0</i> Mg / L
Calcium (Ca)	<i>500</i>	<i>250</i> Mg / L
Iron (FE2)	<i>300</i>	<i>0</i> Mg / L
Chlorides (Cl)	<i>3000</i>	<i>0</i> Mg / L
Sulfates (SO ₄)	<i>1500</i>	<i><200</i> Mg / L
Temp	<i>40-80</i>	<i>60</i> Deg
Total Dissolved Solids		<i>260</i> Mg / L

Respectfully: ED DEUSSEN

Title: CEMENTING SUPERVISOR

Location: Grand Junction, CO

NOTICE:

This report is limited to the described sample tested. Any person using or relying on this report agrees that Halliburton shall not be liable for any loss or damage whether due to act or omission resulting from such report or its use.

Sales Order #: 900972085	Line Item: 10	Survey Conducted Date: 12/16/2013
Customer: WILLIAMS PRODUCTION RMT INC EBUSINE		Job Type (BOM): CMT MULTIPLE STAGES BOM
Customer Representative:		API / UWI: (leave blank if unknown) 05-103-11798
Well Name: Federal RG		Well Number: 512-14-298
Well Type: Development Well	Well Country: United States of America	
H2S Present:	Well State: Colorado	Well County: Rio Blanco

Dear Customer,

We hope that you were satisfied with the service quality of this job performed by Halliburton. It is the aim of our management and service personnel to deliver equipment and service of a standard unmatched in the service sector of the energy industry.

Please take the time to let us know if our performance met with your satisfaction. Please be as critical as possible to ensure we constantly improve our service. Your comments are of great value to us and are intended for the exclusive use of Halliburton.

CUSTOMER SATISFACTION SURVEY

CATEGORY	CUSTOMER SATISFACTION RESPONSE	
Survey Conducted Date	The date the survey was conducted	12/16/2013
Survey Interviewer	The survey interviewer is the person who initiated the survey.	EDWARD DEUSSEN (HB57194)
Customer Participation	Did the customer participate in this survey? (Y/N)	No
Customer Representative	Enter the Customer representative name	
HSE	Was our HSE performance satisfactory? Circle Y or N	
Equipment	Were you satisfied with our Equipment? Circle Y or N	
Personnel	Were you satisfied with our people? Circle Y or N	
Customer Comment	Customer's Comment	

CUSTOMER SIGNATURE

Sales Order #: 900972085	Line Item: 10	Survey Conducted Date: 12/16/2013
Customer: WILLIAMS PRODUCTION RMT INC EBUSINE		Job Type (BOM): CMT MULTIPLE STAGES BOM
Customer Representative:		API / UWI: (leave blank if unknown) 05-103-11798
Well Name: Federal RG		Well Number: 512-14-298
Well Type: Development Well	Well Country: United States of America	
H2S Present:	Well State: Colorado	Well County: Rio Blanco

KEY PERFORMANCE INDICATORS

General	
Survey Conducted Date The date the survey was conducted	12/16/2013

Cementing KPI Survey	
Type of Job Select the type of job. (Cementing or Non-Cementing)	0
Select the Maximum Deviation range for this Job What is the highest deviation for the job you just completed? This may not be the maximum well deviation.	Vertical
Total Operating Time (hours) Total Operating Hours Including Rig-up, Pumping, Rig-down. Enter in decimal format.	10.5
HSE Incident, Accident, Injury HSE Incident, Accident, Injury. This should be recordable incidents only.	No
Was the job purpose achieved? Was the job delivered correctly as per customer agreed design?	Yes
Operating Hours (Pumping Hours) Total number of hours pumping fluid on this job. Enter in decimal format.	7.5
Customer Non-Productive Rig Time (hrs) Lost time due to Halliburton in the start, execution, or completion of an ordered service or product, or delays in a follow-on service. Enter in decimal format. 0 if none.	0
Type of Rig Classification Job Was Performed Type Of Rig (classification) Job Was Performed On	Drilling Rig (Portable)
Number Of JSAs Performed Number Of Jsas Performed	5
Number of Unplanned Shutdowns Unplanned shutdown is when injection stops for any period of time.	0
Was this a Primary Cement Job (Yes / No)	Yes

Sales Order #: 900972085	Line Item: 10	Survey Conducted Date: 12/16/2013
Customer: WILLIAMS PRODUCTION RMT INC EBUSINE		Job Type (BOM): CMT MULTIPLE STAGES BOM
Customer Representative:		API / UWI: (leave blank if unknown) 05-103-11798
Well Name: Federal RG		Well Number: 512-14-298
Well Type: Development Well	Well Country: United States of America	
H2S Present:	Well State: Colorado	Well County: Rio Blanco

Primary Cement Job= Casing job, Liner job, or Tie-back job.	
Did We Run Wiper Plugs?	Both
Did We Run Top And Bottom Casing Wiper Plugs?	
Mixing Density of Job Stayed in Designed Density Range (0-100%)	98
Density Range defined as +/- .20 ppg. Calculation: Total BBLs cement mixed at designed density divided by total BBLs of cement multiplied by 100	
Was Automated Density Control Used?	Yes
Was Automated Density Control (ADC) Used ?	
Pump Rate (percent) of Job Stayed At Designed Pump Rate	98
Pump Rate range defined as +/- 1bbl/min. Calculation: Total BBLs of fluid pumped at the designed rate divided by Total BBLs of fluid pumped, multiplied by 100	
Nbr of Remedial Sqz Jobs Rqd - Competition	0
Number Of Remedial Squeeze Jobs Required After Primary Job Performed By Competition	
Nbr of Remedial Plug Jobs Rqd - HES	0
Number Of Remedial Plug Jobs Needed After Primary Plug Pumped By HES	
Nbr of Remedial Sqz Jobs Rqd - HES	0
Number Of Remedial Squeeze Jobs Required After Primary Job Performed By HES	