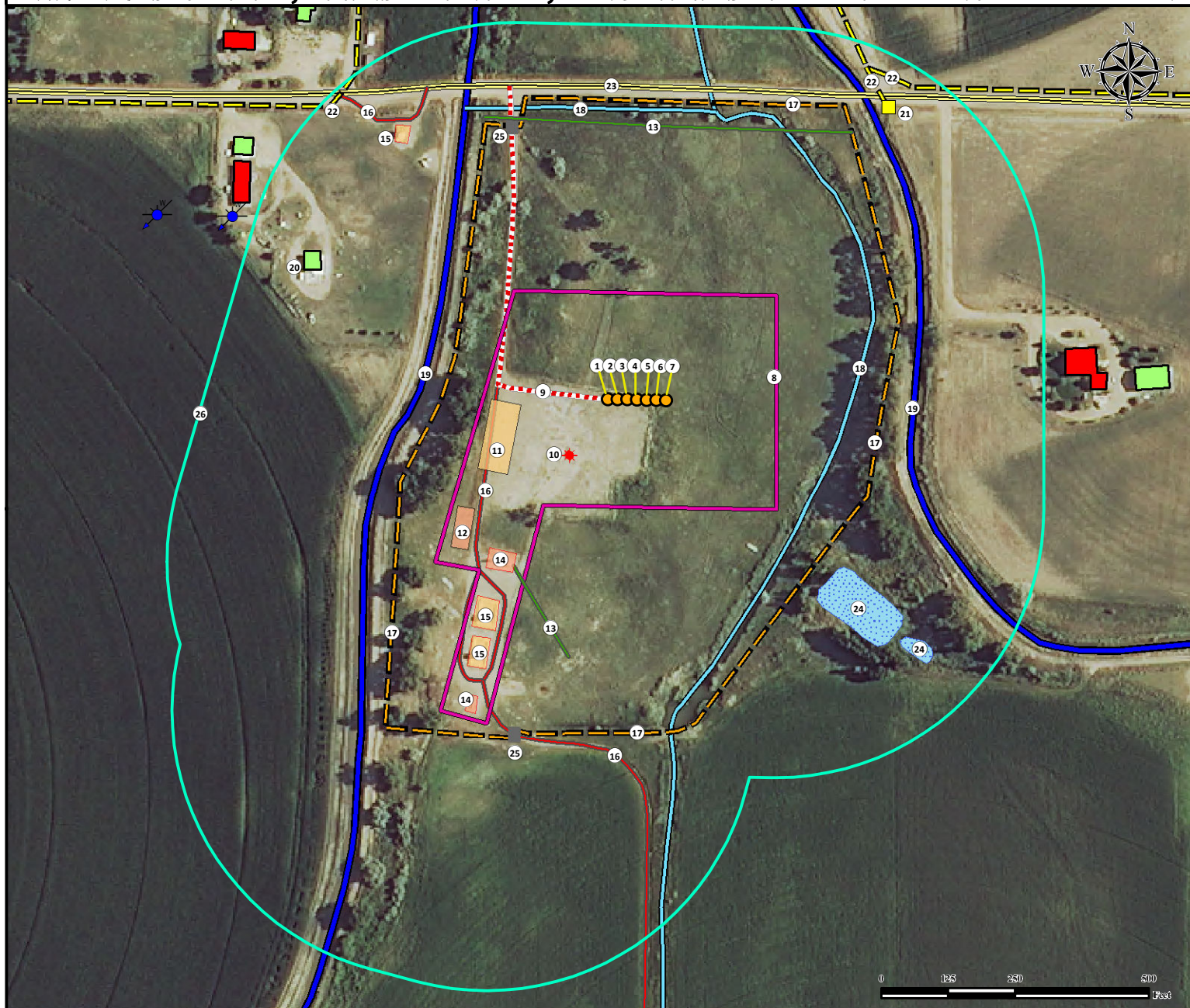


# Location Drawing

## H O L T O N 3 1 - 1 2 P A D

### M U L T I W E L L P A D

**NW¼ NE¼ SECTION 12, TOWNSHIP 6 NORTH, RANGE 65 WEST OF THE 6TH PRINCIPAL MERIDIAN**



1. Proposed Well HOLTON F-12HN.  
2. Proposed Well HOLTON G-12HN.  
3. Proposed Well HOLTON H-12HN.  
4. Proposed Well HOLTON I-12HN.  
5. Proposed Well HOLTON J-12HC.  
6. Proposed Well HOLTON K-12HN.  
7. Proposed Well HOLTON L-12HN.  
8. Operational Disturbance Area.  
9. Proposed Access Road.

10. Existing Well HOLTON 31-12 is ±164' SW.  
11. Proposed Tank Battery is ±218' SW.  
12. Proposed Separator Pad is ±365' SW.  
13. Pipelines are ±398' SW, and ±513' N.  
14. Existing Separator Pads are ±365' SW, and ±628' SW.  
15. Existing Tank Batteries are ±454' SW, ±522' SW, and ±643' NW.  
16. Private Roads are ±262' W, ±598' SW, and ±674' NW.  
17. Fences are ±350' W, ±451' E, ±560' N and ±618' S.  
18. Ditches are ±370' E, and ±543' N.

19. Canals are ±397' W, and ±523' E.  
20. Building is ±638' NW.  
21. Utility Box is ±721' NE.  
22. Powerlines are ±718' NE, ±755' NE, and ±794' NW.  
23. Public Road is ±585' N.  
24. Ponds are ±487' SE, and ±663' SE.  
25. Gates are ±563' NW, and ±665' SW.  
26. 500' Radius.

#### Legend

	Proposed Well		Pond		Pipeline
	Existing Well		500' Radius		Private Road
	Water Well		Building		Ditch
	Utility Box		Building Unit		Public Road
	Gate		Proposed Separator Pad		Powerline
	Disturbance Area		Proposed Tank Battery		Canal
			Existing Tank Battery		Proposed Access Road
			Existing Separator Pad		Fence

#### Measured from Nearest Well or Facility Edge

Building - ±399' NW

Building Unit - ±581' NE

#### Measured from Reference Location

Public Road - (CR 72) ±585' N

Prop. Line (Peterson, Leslie E & Joan M) ±168' W

Utility (Power Line) - ±718' NE

Surface Water (Ditch) - ±370' E

Railroad - >5280' S

Water Well - ±830' NW SWL = 60'

Permit: 261559, Receipt: 0534114

#### Reference Location

\*\* HOLTON I-12HN \*\*

Lat: 40.506225° Long: -104.608292° (NAD83)  
Elevation: 4718 Feet

#### Disturbance Acreage:

6.06 Acres Drilling Operations  
3.03 Acres Interim Reclaim

Current Surface Use: Rangeland  
Future Surface Use: Rangeland



Use our resources to find yours!  
[www.petro-fs.com](http://www.petro-fs.com)  
(303) 928-7128

Field Date: 1/29/2014  
Drafting Date: 4/29/2014  
Drafted by: CSG  
Checked by: MLP  
Revision: 2

Data Sources:  
- Aerial courtesy of NAIP (2013)

Prepared for:

 **BAYSWATER**  
EXPLORATION AND PRODUCTION, LLC