

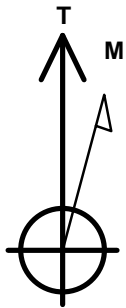
Synergy Resources

Well Name: **SRC Markham C-16-9CHZ**

Surface Location: SRC Markham Pad Sec.16-T4N-R68W
 North American Datum 1983 , US State Plane 1983 , Colorado Northern Zone
 Ground Elevation: 4963.0
 +N/-S +E/-W Northing Easting Latitude Longitude Slot
 0.0 0.0 1357580.80 3136545.61 40.313925 -105.010348
 RKB - 13' WELL @ 4976.0ft (RKB - 13')

WELLBORE TARGET DETAILS

Name	TVD	+N/-S	+E/-W	Shape
SHL 2440'FNL & 2077'FWL, SEC.16	1.0	0.0	0.0	Point
BHL 460'FNL & 1580'FEL, SEC.9	6290.0	7315.0	1620.4	Point
LANDING PT. 2199'FNL & 1580'FEL, SEC.16	6290.0	260.5	1631.1	Point



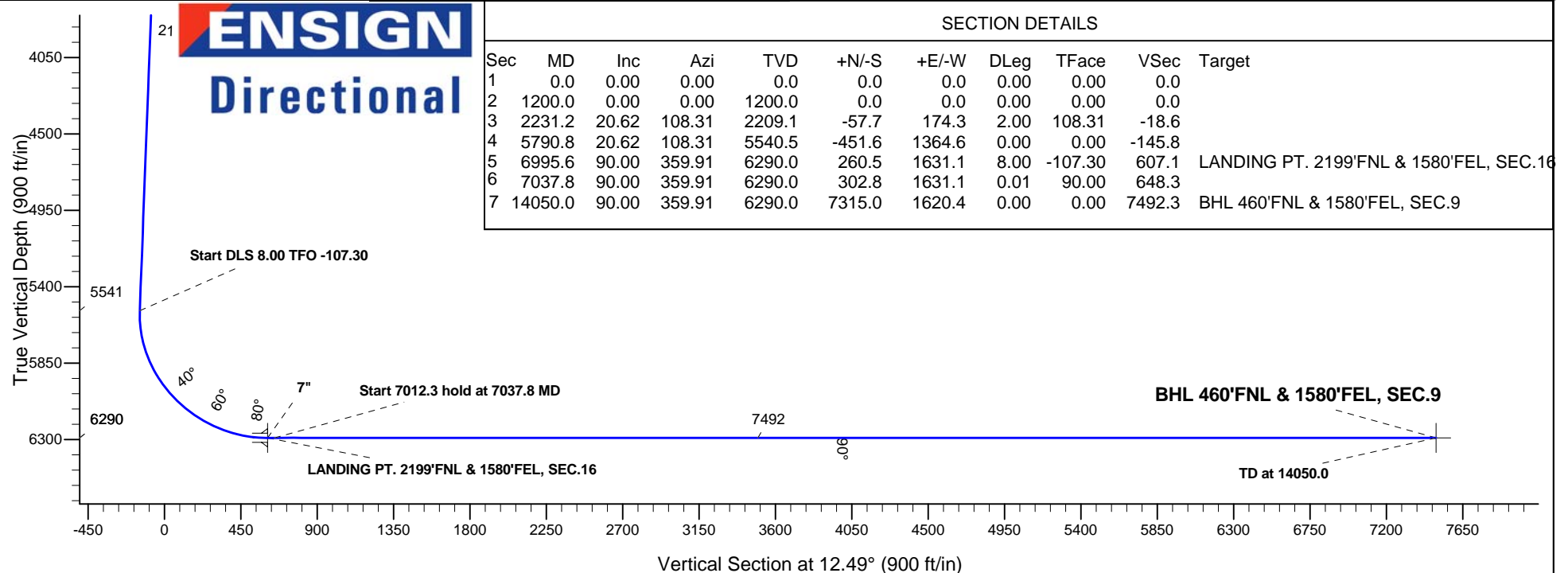
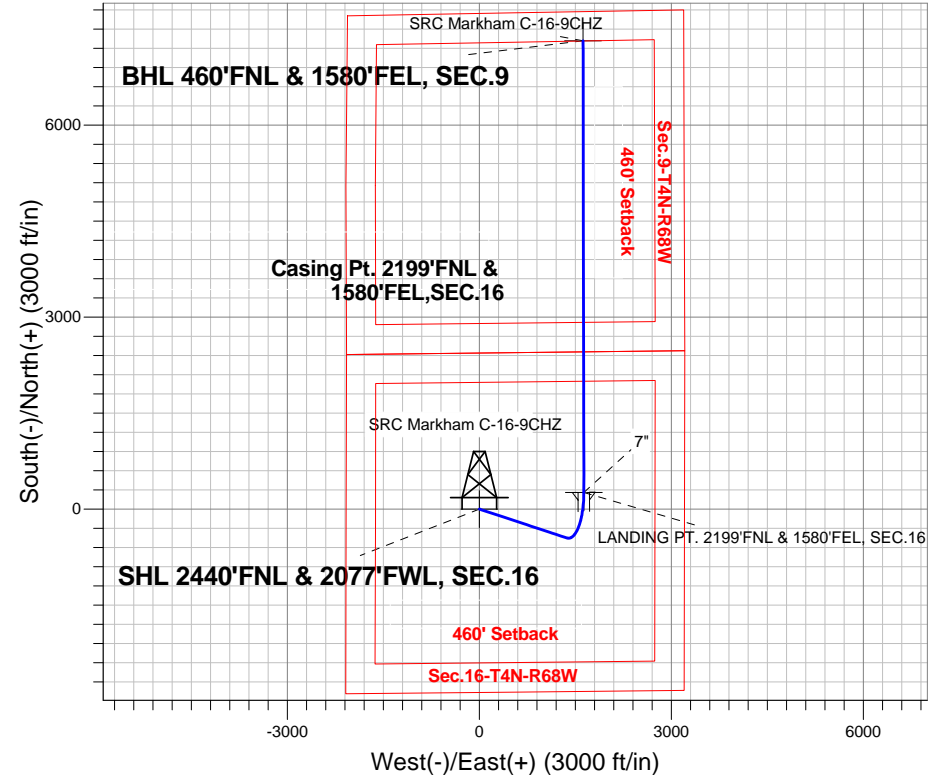
Azimuths to True North
 Magnetic North: 8.61°

Magnetic Field
 Strength: 52762.9snT
 Dip Angle: 66.84°
 Date: 4/7/2014
 Model: IGRF2010

SRC Markham Pad Sec.16-T4N-R68W
 SRC Markham C-16-9CHZ
 Plan #1 (3-31-14)
 15:32, April 08 2014

ANNOTATIONS

TVD	MD	Annotation
1200.0	1200.0	KOP - Start Build 2.00
5540.5	5790.8	Start DLS 8.00 TFO -107.30
6290.0	7037.8	Start 7012.3 hold at 7037.8 MD
6290.0	14050.0	TD at 14050.0





Synergy Resources

Sec.16-T4N-R68W

SRC Markham Pad Sec.16-T4N-R68W

SRC Markham C-16-9CHZ

Wellbore #1

Plan: Plan #1 (3-31-14)

Standard Planning Report

08 April, 2014

Plan Sections										
Measured Depth (ft)	Inclination (°)	Azimuth (°)	Vertical Depth (ft)	+N/-S (ft)	+E/-W (ft)	Dogleg Rate (°/100ft)	Build Rate (°/100ft)	Turn Rate (°/100ft)	TFO (°)	Target
0.0	0.00	0.00	0.0	0.0	0.0	0.00	0.00	0.00	0.00	
1,200.0	0.00	0.00	1,200.0	0.0	0.0	0.00	0.00	0.00	0.00	
2,231.2	20.62	108.31	2,209.1	-57.7	174.3	2.00	2.00	0.00	108.31	
5,790.8	20.62	108.31	5,540.5	-451.6	1,364.6	0.00	0.00	0.00	0.00	
6,995.6	90.00	359.91	6,290.0	260.5	1,631.1	8.00	5.76	-9.00	-107.30	LANDING PT. 2199
7,037.8	90.00	359.91	6,290.0	302.8	1,631.1	0.01	0.00	0.01	90.00	
14,050.0	90.00	359.91	6,290.0	7,315.0	1,620.4	0.00	0.00	0.00	0.00	BHL 460'FNL & 158

Database:	Landmark	Local Co-ordinate Reference:	Well SRC Markham C-16-9CHZ
Company:	Synergy Resources	TVD Reference:	WELL @ 4976.0ft (RKB - 13')
Project:	Sec.16-T4N-R68W	MD Reference:	WELL @ 4976.0ft (RKB - 13')
Site:	SRC Markham Pad Sec.16-T4N-R68W	North Reference:	True
Well:	SRC Markham C-16-9CHZ	Survey Calculation Method:	Minimum Curvature
Wellbore:	Wellbore #1		
Design:	Plan #1 (3-31-14)		

Planned Survey									
Measured Depth (ft)	Inclination (°)	Azimuth (°)	Vertical Depth (ft)	+N/-S (ft)	+E/-W (ft)	Vertical Section (ft)	Dogleg Rate (°/100ft)	Build Rate (°/100ft)	Turn Rate (°/100ft)
0.0	0.00	0.00	0.0	0.0	0.0	0.0	0.00	0.00	0.00
1.0	0.00	0.00	1.0	0.0	0.0	0.0	0.00	0.00	0.00
SHL 2440'FNL & 2077'FWL, SEC.16									
100.0	0.00	0.00	100.0	0.0	0.0	0.0	0.00	0.00	0.00
200.0	0.00	0.00	200.0	0.0	0.0	0.0	0.00	0.00	0.00
300.0	0.00	0.00	300.0	0.0	0.0	0.0	0.00	0.00	0.00
400.0	0.00	0.00	400.0	0.0	0.0	0.0	0.00	0.00	0.00
500.0	0.00	0.00	500.0	0.0	0.0	0.0	0.00	0.00	0.00
600.0	0.00	0.00	600.0	0.0	0.0	0.0	0.00	0.00	0.00
700.0	0.00	0.00	700.0	0.0	0.0	0.0	0.00	0.00	0.00
800.0	0.00	0.00	800.0	0.0	0.0	0.0	0.00	0.00	0.00
900.0	0.00	0.00	900.0	0.0	0.0	0.0	0.00	0.00	0.00
1,000.0	0.00	0.00	1,000.0	0.0	0.0	0.0	0.00	0.00	0.00
1,100.0	0.00	0.00	1,100.0	0.0	0.0	0.0	0.00	0.00	0.00
1,200.0	0.00	0.00	1,200.0	0.0	0.0	0.0	0.00	0.00	0.00
KOP - Start Build 2.00									
1,300.0	2.00	108.31	1,300.0	-0.5	1.7	-0.2	2.00	2.00	0.00
1,400.0	4.00	108.31	1,399.8	-2.2	6.6	-0.7	2.00	2.00	0.00
1,500.0	6.00	108.31	1,499.5	-4.9	14.9	-1.6	2.00	2.00	0.00
1,600.0	8.00	108.31	1,598.7	-8.8	26.5	-2.8	2.00	2.00	0.00
1,700.0	10.00	108.31	1,697.5	-13.7	41.3	-4.4	2.00	2.00	0.00
1,800.0	12.00	108.31	1,795.6	-19.7	59.4	-6.4	2.00	2.00	0.00
1,900.0	14.00	108.31	1,893.1	-26.7	80.8	-8.6	2.00	2.00	0.00
2,000.0	16.00	108.31	1,989.6	-34.9	105.4	-11.3	2.00	2.00	0.00
2,100.0	18.00	108.31	2,085.3	-44.1	133.1	-14.2	2.00	2.00	0.00
2,200.0	20.00	108.31	2,179.8	-54.3	164.0	-17.5	2.00	2.00	0.00
2,231.2	20.62	108.31	2,209.1	-57.7	174.3	-18.6	2.00	2.00	0.00
2,300.0	20.62	108.31	2,273.5	-65.3	197.3	-21.1	0.00	0.00	0.00
2,400.0	20.62	108.31	2,367.1	-76.4	230.7	-24.7	0.00	0.00	0.00
2,500.0	20.62	108.31	2,460.6	-87.4	264.2	-28.2	0.00	0.00	0.00
2,600.0	20.62	108.31	2,554.2	-98.5	297.6	-31.8	0.00	0.00	0.00
2,700.0	20.62	108.31	2,647.8	-109.6	331.1	-35.4	0.00	0.00	0.00
2,800.0	20.62	108.31	2,741.4	-120.6	364.5	-39.0	0.00	0.00	0.00
2,900.0	20.62	108.31	2,835.0	-131.7	397.9	-42.5	0.00	0.00	0.00
3,000.0	20.62	108.31	2,928.6	-142.8	431.4	-46.1	0.00	0.00	0.00
3,100.0	20.62	108.31	3,022.2	-153.8	464.8	-49.7	0.00	0.00	0.00
3,200.0	20.62	108.31	3,115.8	-164.9	498.3	-53.2	0.00	0.00	0.00
3,300.0	20.62	108.31	3,209.4	-176.0	531.7	-56.8	0.00	0.00	0.00
3,400.0	20.62	108.31	3,303.0	-187.0	565.1	-60.4	0.00	0.00	0.00
3,500.0	20.62	108.31	3,396.6	-198.1	598.6	-64.0	0.00	0.00	0.00
3,600.0	20.62	108.31	3,490.2	-209.2	632.0	-67.5	0.00	0.00	0.00
3,700.0	20.62	108.31	3,583.7	-220.2	665.5	-71.1	0.00	0.00	0.00
3,800.0	20.62	108.31	3,677.3	-231.3	698.9	-74.7	0.00	0.00	0.00
3,900.0	20.62	108.31	3,770.9	-242.4	732.3	-78.3	0.00	0.00	0.00
4,000.0	20.62	108.31	3,864.5	-253.4	765.8	-81.8	0.00	0.00	0.00
4,100.0	20.62	108.31	3,958.1	-264.5	799.2	-85.4	0.00	0.00	0.00
4,200.0	20.62	108.31	4,051.7	-275.6	832.7	-89.0	0.00	0.00	0.00
4,300.0	20.62	108.31	4,145.3	-286.6	866.1	-92.5	0.00	0.00	0.00
4,400.0	20.62	108.31	4,238.9	-297.7	899.5	-96.1	0.00	0.00	0.00
4,500.0	20.62	108.31	4,332.5	-308.8	933.0	-99.7	0.00	0.00	0.00
4,600.0	20.62	108.31	4,426.1	-319.8	966.4	-103.3	0.00	0.00	0.00
4,700.0	20.62	108.31	4,519.7	-330.9	999.9	-106.8	0.00	0.00	0.00
4,800.0	20.62	108.31	4,613.2	-342.0	1,033.3	-110.4	0.00	0.00	0.00
4,900.0	20.62	108.31	4,706.8	-353.0	1,066.7	-114.0	0.00	0.00	0.00

Database:	Landmark	Local Co-ordinate Reference:	Well SRC Markham C-16-9CHZ
Company:	Synergy Resources	TVD Reference:	WELL @ 4976.0ft (RKB - 13')
Project:	Sec.16-T4N-R68W	MD Reference:	WELL @ 4976.0ft (RKB - 13')
Site:	SRC Markham Pad Sec.16-T4N-R68W	North Reference:	True
Well:	SRC Markham C-16-9CHZ	Survey Calculation Method:	Minimum Curvature
Wellbore:	Wellbore #1		
Design:	Plan #1 (3-31-14)		

Planned Survey									
Measured Depth (ft)	Inclination (°)	Azimuth (°)	Vertical Depth (ft)	+N/-S (ft)	+E/-W (ft)	Vertical Section (ft)	Dogleg Rate (°/100ft)	Build Rate (°/100ft)	Turn Rate (°/100ft)
5,000.0	20.62	108.31	4,800.4	-364.1	1,100.2	-117.6	0.00	0.00	0.00
5,100.0	20.62	108.31	4,894.0	-375.2	1,133.6	-121.1	0.00	0.00	0.00
5,200.0	20.62	108.31	4,987.6	-386.2	1,167.1	-124.7	0.00	0.00	0.00
5,300.0	20.62	108.31	5,081.2	-397.3	1,200.5	-128.3	0.00	0.00	0.00
5,400.0	20.62	108.31	5,174.8	-408.4	1,233.9	-131.9	0.00	0.00	0.00
5,500.0	20.62	108.31	5,268.4	-419.4	1,267.4	-135.4	0.00	0.00	0.00
5,600.0	20.62	108.31	5,362.0	-430.5	1,300.8	-139.0	0.00	0.00	0.00
5,700.0	20.62	108.31	5,455.6	-441.6	1,334.3	-142.6	0.00	0.00	0.00
5,790.8	20.62	108.31	5,540.5	-451.6	1,364.6	-145.8	0.00	0.00	0.00
Start DLS 8.00 TFO -107.30									
5,800.0	20.42	106.29	5,549.2	-452.6	1,367.7	-146.1	8.03	-2.26	-21.98
5,900.0	19.79	82.94	5,643.2	-455.4	1,401.3	-141.6	8.00	-0.63	-23.35
6,000.0	22.12	61.40	5,736.7	-444.3	1,434.7	-123.5	8.00	2.33	-21.54
6,100.0	26.64	45.30	5,827.9	-419.5	1,467.2	-92.2	8.00	4.52	-16.10
6,200.0	32.45	34.08	5,914.9	-381.4	1,498.2	-48.4	8.00	5.81	-11.22
6,300.0	38.97	26.11	5,996.1	-330.9	1,527.1	7.2	8.00	6.52	-7.97
6,400.0	45.90	20.16	6,069.9	-268.8	1,553.4	73.5	8.00	6.93	-5.95
6,500.0	53.07	15.48	6,134.9	-196.5	1,576.5	149.1	8.00	7.17	-4.68
6,600.0	60.39	11.62	6,189.7	-115.3	1,595.9	232.6	8.00	7.32	-3.86
6,700.0	67.81	8.29	6,233.4	-26.7	1,611.4	322.4	8.00	7.42	-3.33
6,800.0	75.29	5.29	6,265.0	67.4	1,622.5	416.7	8.00	7.48	-3.00
6,900.0	82.80	2.49	6,284.0	165.3	1,629.1	513.7	8.00	7.52	-2.80
6,995.6	90.00	359.91	6,290.0	260.5	1,631.1	607.1	8.00	7.53	-2.70
7" - LANDING PT. 2199'FNL & 1580'FEL, SEC.16									
7,000.0	90.00	359.91	6,290.0	265.0	1,631.1	611.5	0.05	0.04	-0.01
7,037.8	90.00	359.91	6,290.0	302.8	1,631.1	648.4	0.01	0.00	0.01
Start 7012.3 hold at 7037.8 MD									
7,100.0	90.00	359.91	6,290.0	365.0	1,631.0	709.1	0.00	0.00	0.00
7,200.0	90.00	359.91	6,290.0	465.0	1,630.8	806.7	0.00	0.00	0.00
7,300.0	90.00	359.91	6,290.0	565.0	1,630.7	904.3	0.00	0.00	0.00
7,400.0	90.00	359.91	6,290.0	665.0	1,630.5	1,001.9	0.00	0.00	0.00
7,500.0	90.00	359.91	6,290.0	765.0	1,630.4	1,099.5	0.00	0.00	0.00
7,600.0	90.00	359.91	6,290.0	865.0	1,630.2	1,197.1	0.00	0.00	0.00
7,700.0	90.00	359.91	6,290.0	965.0	1,630.1	1,294.7	0.00	0.00	0.00
7,800.0	90.00	359.91	6,290.0	1,065.0	1,629.9	1,392.3	0.00	0.00	0.00
7,900.0	90.00	359.91	6,290.0	1,165.0	1,629.7	1,489.9	0.00	0.00	0.00
8,000.0	90.00	359.91	6,290.0	1,265.0	1,629.6	1,587.5	0.00	0.00	0.00
8,100.0	90.00	359.91	6,290.0	1,365.0	1,629.4	1,685.1	0.00	0.00	0.00
8,200.0	90.00	359.91	6,290.0	1,465.0	1,629.3	1,782.7	0.00	0.00	0.00
8,300.0	90.00	359.91	6,290.0	1,565.0	1,629.1	1,880.3	0.00	0.00	0.00
8,400.0	90.00	359.91	6,290.0	1,665.0	1,629.0	1,977.9	0.00	0.00	0.00
8,500.0	90.00	359.91	6,290.0	1,765.0	1,628.8	2,075.5	0.00	0.00	0.00
8,600.0	90.00	359.91	6,290.0	1,865.0	1,628.7	2,173.1	0.00	0.00	0.00
8,700.0	90.00	359.91	6,290.0	1,965.0	1,628.5	2,270.7	0.00	0.00	0.00
8,800.0	90.00	359.91	6,290.0	2,065.0	1,628.4	2,368.3	0.00	0.00	0.00
8,900.0	90.00	359.91	6,290.0	2,165.0	1,628.2	2,465.9	0.00	0.00	0.00
9,000.0	90.00	359.91	6,290.0	2,265.0	1,628.1	2,563.5	0.00	0.00	0.00
9,100.0	90.00	359.91	6,290.0	2,365.0	1,627.9	2,661.1	0.00	0.00	0.00
9,200.0	90.00	359.91	6,290.0	2,465.0	1,627.8	2,758.7	0.00	0.00	0.00
9,300.0	90.00	359.91	6,290.0	2,565.0	1,627.6	2,856.3	0.00	0.00	0.00
9,400.0	90.00	359.91	6,290.0	2,665.0	1,627.5	2,953.9	0.00	0.00	0.00
9,500.0	90.00	359.91	6,290.0	2,765.0	1,627.3	3,051.5	0.00	0.00	0.00
9,600.0	90.00	359.91	6,290.0	2,865.0	1,627.2	3,149.1	0.00	0.00	0.00

Database:	Landmark	Local Co-ordinate Reference:	Well SRC Markham C-16-9CHZ
Company:	Synergy Resources	TVD Reference:	WELL @ 4976.0ft (RKB - 13')
Project:	Sec.16-T4N-R68W	MD Reference:	WELL @ 4976.0ft (RKB - 13')
Site:	SRC Markham Pad Sec.16-T4N-R68W	North Reference:	True
Well:	SRC Markham C-16-9CHZ	Survey Calculation Method:	Minimum Curvature
Wellbore:	Wellbore #1		
Design:	Plan #1 (3-31-14)		

Planned Survey									
Measured Depth (ft)	Inclination (°)	Azimuth (°)	Vertical Depth (ft)	+N/-S (ft)	+E/-W (ft)	Vertical Section (ft)	Dogleg Rate (°/100ft)	Build Rate (°/100ft)	Turn Rate (°/100ft)
9,700.0	90.00	359.91	6,290.0	2,965.0	1,627.0	3,246.7	0.00	0.00	0.00
9,800.0	90.00	359.91	6,290.0	3,065.0	1,626.8	3,344.3	0.00	0.00	0.00
9,900.0	90.00	359.91	6,290.0	3,165.0	1,626.7	3,441.9	0.00	0.00	0.00
10,000.0	90.00	359.91	6,290.0	3,265.0	1,626.5	3,539.5	0.00	0.00	0.00
10,100.0	90.00	359.91	6,290.0	3,365.0	1,626.4	3,637.1	0.00	0.00	0.00
10,200.0	90.00	359.91	6,290.0	3,465.0	1,626.2	3,734.7	0.00	0.00	0.00
10,300.0	90.00	359.91	6,290.0	3,565.0	1,626.1	3,832.3	0.00	0.00	0.00
10,400.0	90.00	359.91	6,290.0	3,665.0	1,625.9	3,929.9	0.00	0.00	0.00
10,500.0	90.00	359.91	6,290.0	3,765.0	1,625.8	4,027.5	0.00	0.00	0.00
10,600.0	90.00	359.91	6,290.0	3,865.0	1,625.6	4,125.1	0.00	0.00	0.00
10,700.0	90.00	359.91	6,290.0	3,965.0	1,625.5	4,222.7	0.00	0.00	0.00
10,800.0	90.00	359.91	6,290.0	4,065.0	1,625.3	4,320.3	0.00	0.00	0.00
10,900.0	90.00	359.91	6,290.0	4,165.0	1,625.2	4,417.9	0.00	0.00	0.00
11,000.0	90.00	359.91	6,290.0	4,265.0	1,625.0	4,515.5	0.00	0.00	0.00
11,100.0	90.00	359.91	6,290.0	4,365.0	1,624.9	4,613.1	0.00	0.00	0.00
11,200.0	90.00	359.91	6,290.0	4,465.0	1,624.7	4,710.7	0.00	0.00	0.00
11,300.0	90.00	359.91	6,290.0	4,565.0	1,624.6	4,808.3	0.00	0.00	0.00
11,400.0	90.00	359.91	6,290.0	4,665.0	1,624.4	4,905.9	0.00	0.00	0.00
11,500.0	90.00	359.91	6,290.0	4,765.0	1,624.2	5,003.5	0.00	0.00	0.00
11,600.0	90.00	359.91	6,290.0	4,865.0	1,624.1	5,101.1	0.00	0.00	0.00
11,700.0	90.00	359.91	6,290.0	4,965.0	1,623.9	5,198.7	0.00	0.00	0.00
11,800.0	90.00	359.91	6,290.0	5,065.0	1,623.8	5,296.3	0.00	0.00	0.00
11,900.0	90.00	359.91	6,290.0	5,165.0	1,623.6	5,393.9	0.00	0.00	0.00
12,000.0	90.00	359.91	6,290.0	5,265.0	1,623.5	5,491.5	0.00	0.00	0.00
12,100.0	90.00	359.91	6,290.0	5,365.0	1,623.3	5,589.1	0.00	0.00	0.00
12,200.0	90.00	359.91	6,290.0	5,465.0	1,623.2	5,686.7	0.00	0.00	0.00
12,300.0	90.00	359.91	6,290.0	5,565.0	1,623.0	5,784.3	0.00	0.00	0.00
12,400.0	90.00	359.91	6,290.0	5,665.0	1,622.9	5,881.9	0.00	0.00	0.00
12,500.0	90.00	359.91	6,290.0	5,765.0	1,622.7	5,979.5	0.00	0.00	0.00
12,600.0	90.00	359.91	6,290.0	5,865.0	1,622.6	6,077.1	0.00	0.00	0.00
12,700.0	90.00	359.91	6,290.0	5,965.0	1,622.4	6,174.7	0.00	0.00	0.00
12,800.0	90.00	359.91	6,290.0	6,065.0	1,622.3	6,272.3	0.00	0.00	0.00
12,900.0	90.00	359.91	6,290.0	6,165.0	1,622.1	6,369.9	0.00	0.00	0.00
13,000.0	90.00	359.91	6,290.0	6,265.0	1,622.0	6,467.5	0.00	0.00	0.00
13,100.0	90.00	359.91	6,290.0	6,365.0	1,621.8	6,565.1	0.00	0.00	0.00
13,200.0	90.00	359.91	6,290.0	6,465.0	1,621.6	6,662.7	0.00	0.00	0.00
13,300.0	90.00	359.91	6,290.0	6,565.0	1,621.5	6,760.3	0.00	0.00	0.00
13,400.0	90.00	359.91	6,290.0	6,665.0	1,621.3	6,857.9	0.00	0.00	0.00
13,500.0	90.00	359.91	6,290.0	6,765.0	1,621.2	6,955.5	0.00	0.00	0.00
13,600.0	90.00	359.91	6,290.0	6,865.0	1,621.0	7,053.1	0.00	0.00	0.00
13,700.0	90.00	359.91	6,290.0	6,965.0	1,620.9	7,150.7	0.00	0.00	0.00
13,800.0	90.00	359.91	6,290.0	7,065.0	1,620.7	7,248.3	0.00	0.00	0.00
13,900.0	90.00	359.91	6,290.0	7,165.0	1,620.6	7,345.9	0.00	0.00	0.00
14,000.0	90.00	359.91	6,290.0	7,265.0	1,620.4	7,443.5	0.00	0.00	0.00
14,050.0	90.00	359.91	6,290.0	7,315.0	1,620.4	7,492.3	0.00	0.00	0.00
TD at 14050.0 - BHL 460'FNL & 1580'FEL, SEC.9									

Database:	Landmark	Local Co-ordinate Reference:	Well SRC Markham C-16-9CHZ
Company:	Synergy Resources	TVD Reference:	WELL @ 4976.0ft (RKB - 13')
Project:	Sec.16-T4N-R68W	MD Reference:	WELL @ 4976.0ft (RKB - 13')
Site:	SRC Markham Pad Sec.16-T4N-R68W	North Reference:	True
Well:	SRC Markham C-16-9CHZ	Survey Calculation Method:	Minimum Curvature
Wellbore:	Wellbore #1		
Design:	Plan #1 (3-31-14)		

Casing Points					
Measured Depth (ft)	Vertical Depth (ft)	Name		Casing Diameter (")	Hole Diameter (")
6,995.6	6,290.0	7"		7	7-1/2

Plan Annotations					
Measured Depth (ft)	Vertical Depth (ft)	Local Coordinates		Comment	
		+N/-S (ft)	+E/-W (ft)		
1,200.0	1,200.0	0.0	0.0	KOP - Start Build 2.00	
5,790.8	5,540.5	-451.6	1,364.6	Start DLS 8.00 TFO -107.30	
7,037.8	6,290.0	302.8	1,631.1	Start 7012.3 hold at 7037.8 MD	
14,050.0	6,290.0	7,315.0	1,620.4	TD at 14050.0	



Synergy Resources

Sec.16-T4N-R68W

SRC Markham Pad Sec.16-T4N-R68W

SRC Markham C-16-9CHZ

Wellbore #1

Plan #1 (3-31-14)

Anticollision Report

08 April, 2014

Company:	Synergy Resources	Local Co-ordinate Reference:	Well SRC Markham C-16-9CHZ
Project:	Sec.16-T4N-R68W	TVD Reference:	WELL @ 4976.0ft (RKB - 13')
Reference Site:	SRC Markham Pad Sec.16-T4N-R68W	MD Reference:	WELL @ 4976.0ft (RKB - 13')
Site Error:	0.0ft	North Reference:	True
Reference Well:	SRC Markham C-16-9CHZ	Survey Calculation Method:	Minimum Curvature
Well Error:	0.0ft	Output errors are at	2.00 sigma
Reference Wellbore	Wellbore #1	Database:	Landmark
Reference Design:	Plan #1 (3-31-14)	Offset TVD Reference:	Offset Datum

Offset Design SRC Markham Pad Sec.16-T4N-R68W - SRC Markham 31-16-9CHZ - Wellbore #1 - Plan #1 (3-31-14)													Offset Site Error:	0.0 ft
Survey Program: 0-MWD													Offset Well Error:	0.0 ft
Reference		Offset		Semi Major Axis			Distance							Warning
Measured Depth (ft)	Vertical Depth (ft)	Measured Depth (ft)	Vertical Depth (ft)	Reference (ft)	Offset (ft)	Highside Toolface (°)	Offset Wellbore Centre +N/-S (ft)	+E/-W (ft)	Between Centres (ft)	Between Ellipses (ft)	Minimum Separation (ft)	Separation Factor		
1,400.0	1,399.8	1,400.8	1,400.8	3.0	3.0	163.69	-0.4	-44.9	51.6	45.5	6.01	8.576		
1,500.0	1,499.5	1,500.5	1,500.5	3.2	3.3	165.98	-0.4	-44.9	60.0	53.6	6.42	9.340		
1,600.0	1,598.7	1,599.7	1,599.7	3.4	3.5	168.29	-0.4	-44.9	71.9	65.0	6.83	10.526		
1,700.0	1,697.5	1,701.4	1,701.4	3.7	3.7	170.06	-1.1	-43.3	85.6	78.3	7.21	11.863		
1,800.0	1,795.6	1,803.6	1,803.4	4.0	3.9	171.12	-3.3	-38.3	99.3	91.7	7.58	13.107		
1,900.0	1,893.1	1,906.4	1,905.8	4.3	4.1	171.73	-7.1	-30.0	113.1	105.1	7.95	14.227		
2,000.0	1,989.6	2,009.6	2,008.2	4.7	4.3	172.03	-12.3	-18.2	126.8	118.5	8.33	15.229		
2,100.0	2,085.3	2,113.4	2,110.6	5.2	4.6	172.10	-19.1	-3.0	140.5	131.8	8.72	16.117		
2,200.0	2,179.8	2,217.6	2,212.9	5.8	4.9	172.02	-27.5	15.6	154.2	145.0	9.13	16.893		
2,300.0	2,273.5	2,322.5	2,314.9	6.4	5.2	171.79	-37.5	37.8	166.9	157.3	9.61	17.365		
2,400.0	2,367.1	2,428.2	2,416.8	7.0	5.7	171.30	-49.0	63.6	176.2	166.1	10.15	17.357		
2,500.0	2,460.6	2,531.5	2,515.3	7.7	6.1	170.61	-61.7	91.8	182.4	171.7	10.72	17.014		
2,600.0	2,554.2	2,631.3	2,610.4	8.4	6.6	169.93	-74.1	119.5	188.1	176.8	11.31	16.625		
2,700.0	2,647.8	2,731.2	2,705.5	9.0	7.1	169.30	-86.6	147.2	193.7	181.8	11.93	16.246		
2,800.0	2,741.4	2,831.0	2,800.5	9.7	7.7	168.70	-99.0	174.9	199.4	186.9	12.56	15.879		
2,900.0	2,835.0	2,930.8	2,895.6	10.5	8.2	168.13	-111.4	202.7	205.2	192.0	13.21	15.526		
3,000.0	2,928.6	3,030.6	2,990.7	11.2	8.8	167.60	-123.9	230.4	210.9	197.0	13.89	15.189		
3,100.0	3,022.2	3,130.4	3,085.8	11.9	9.4	167.09	-136.3	258.1	216.7	202.1	14.57	14.866		
3,200.0	3,115.8	3,230.2	3,180.8	12.6	10.0	166.61	-148.8	285.9	222.4	207.2	15.28	14.559		
3,300.0	3,209.4	3,330.1	3,275.9	13.4	10.6	166.16	-161.2	313.6	228.2	212.2	16.00	14.267		
3,400.0	3,303.0	3,429.9	3,371.0	14.1	11.2	165.72	-173.7	341.3	234.0	217.3	16.73	13.990		
3,500.0	3,396.6	3,529.7	3,466.1	14.8	11.8	165.31	-186.1	369.0	239.8	222.4	17.47	13.728		
3,600.0	3,490.2	3,629.5	3,561.2	15.6	12.4	164.92	-198.5	396.8	245.7	227.4	18.23	13.479		
3,700.0	3,583.7	3,729.3	3,656.2	16.3	13.0	164.54	-211.0	424.5	251.5	232.5	18.99	13.243		
3,800.0	3,677.3	3,829.1	3,751.3	17.0	13.6	164.18	-223.4	452.2	257.4	237.6	19.77	13.020		
3,900.0	3,770.9	3,929.0	3,846.4	17.8	14.2	163.84	-235.9	480.0	263.2	242.7	20.55	12.808		
4,000.0	3,864.5	4,028.8	3,941.5	18.5	14.9	163.52	-248.3	507.7	269.1	247.7	21.34	12.607		
4,100.0	3,958.1	4,128.6	4,036.5	19.3	15.5	163.20	-260.7	535.4	275.0	252.8	22.14	12.417		
4,200.0	4,051.7	4,228.4	4,131.6	20.0	16.1	162.90	-273.2	563.1	280.8	257.9	22.95	12.236		
4,300.0	4,145.3	4,328.2	4,226.7	20.8	16.7	162.62	-285.6	590.9	286.7	263.0	23.77	12.064		
4,400.0	4,238.9	4,428.0	4,321.8	21.5	17.4	162.34	-298.1	618.6	292.6	268.0	24.59	11.901		
4,500.0	4,332.5	4,527.9	4,416.8	22.3	18.0	162.08	-310.5	646.3	298.5	273.1	25.42	11.746		
4,600.0	4,426.1	4,627.7	4,511.9	23.0	18.7	161.82	-323.0	674.1	304.4	278.2	26.25	11.599		
4,700.0	4,519.7	4,727.5	4,607.0	23.8	19.3	161.58	-335.4	701.8	310.4	283.3	27.09	11.458		
4,800.0	4,613.2	4,827.3	4,702.1	24.5	19.9	161.34	-347.8	729.5	316.3	288.3	27.93	11.324		
4,900.0	4,706.8	4,927.1	4,797.2	25.3	20.6	161.11	-360.3	757.2	322.2	293.4	28.78	11.197		
5,000.0	4,800.4	5,026.9	4,892.2	26.0	21.2	160.89	-372.7	785.0	328.1	298.5	29.63	11.075		
5,100.0	4,894.0	5,126.7	4,987.3	26.8	21.8	160.68	-385.2	812.7	334.1	303.6	30.49	10.958		
5,200.0	4,987.6	5,226.6	5,082.4	27.5	22.5	160.48	-397.6	840.4	340.0	308.7	31.35	10.847		
5,300.0	5,081.2	5,326.4	5,177.5	28.3	23.1	160.28	-410.1	868.2	346.0	313.7	32.21	10.741		
5,400.0	5,174.8	5,426.2	5,272.5	29.0	23.8	160.09	-422.5	895.9	351.9	318.8	33.08	10.639		
5,500.0	5,268.4	5,526.0	5,367.6	29.8	24.4	159.91	-434.9	923.6	357.9	323.9	33.95	10.541		
5,600.0	5,362.0	5,625.8	5,462.7	30.5	25.1	159.73	-447.4	951.3	363.8	329.0	34.82	10.448		
5,700.0	5,455.6	5,726.7	5,558.9	31.3	25.7	159.57	-458.6	979.4	369.7	334.1	35.58	10.391		
5,800.0	5,549.2	5,827.4	5,655.5	32.0	26.1	163.56	-457.8	1,007.6	375.3	339.8	35.43	10.591		
5,900.0	5,643.2	5,925.2	5,748.3	32.6	26.5	-171.42	-443.6	1,034.6	381.4	346.7	34.67	10.999		
6,000.0	5,736.7	6,020.7	5,836.4	33.1	26.8	-148.36	-417.1	1,060.2	388.2	354.2	34.03	11.407		
6,100.0	5,827.9	6,114.4	5,918.7	33.6	27.0	-130.96	-379.6	1,084.1	395.4	361.8	33.62	11.763		
6,200.0	5,914.9	6,206.2	5,994.2	34.0	27.1	-118.71	-332.2	1,106.1	402.9	369.4	33.47	12.038		
6,300.0	5,996.1	6,296.6	6,062.2	34.2	27.2	-110.01	-276.1	1,125.8	410.2	376.7	33.56	12.226		
6,400.0	6,069.9	6,385.7	6,122.0	34.5	27.3	-103.67	-212.6	1,143.1	417.2	383.4	33.83	12.334		
6,500.0	6,134.9	6,473.6	6,173.3	34.6	27.3	-98.96	-142.7	1,158.0	423.6	389.4	34.22	12.378		

CC - Min centre to center distance or convergent point, SF - min separation factor, ES - min ellipse separation

Offset Design SRC Markham Pad Sec.16-T4N-R68W - SRC Markham 31-16-9CHZ - Wellbore #1 - Plan #1 (3-31-14)												Offset Site Error:	0.0 ft
Survey Program: 0-MWD												Offset Well Error:	0.0 ft
Reference		Offset		Semi Major Axis			Distance						Warning
Measured Depth (ft)	Vertical Depth (ft)	Measured Depth (ft)	Vertical Depth (ft)	Reference (ft)	Offset (ft)	Highside Toolface (°)	Offset Wellbore Centre +N/-S (ft)	+E/-W (ft)	Between Centres (ft)	Between Ellipses (ft)	Minimum Separation (ft)	Separation Factor	
6,600.0	6,189.7	6,560.7	6,215.6	34.8	27.3	-95.48	-67.6	1,170.2	429.1	394.4	34.71	12.362	
6,700.0	6,233.4	6,650.0	6,249.5	34.9	27.4	-92.93	14.3	1,179.9	433.6	398.3	35.32	12.278	
6,800.0	6,265.0	6,732.9	6,272.0	34.9	27.4	-91.23	93.8	1,186.4	437.0	400.9	36.05	12.122	
6,900.0	6,284.0	6,818.4	6,285.9	35.0	27.4	-90.21	178.0	1,190.3	439.1	402.1	36.95	11.883	
7,000.0	6,290.0	6,904.8	6,290.0	35.1	27.5	-89.87	264.3	1,191.3	439.8	401.7	38.06	11.556	
7,009.5	6,290.0	6,914.3	6,290.0	35.1	27.5	-89.87	273.8	1,191.3	439.8	401.6	38.17	11.522	
7,100.0	6,290.0	7,004.8	6,290.0	35.2	27.7	-89.87	364.3	1,191.2	439.8	400.5	39.31	11.189	
7,200.0	6,290.0	7,104.8	6,290.0	35.4	28.0	-89.87	464.3	1,191.0	439.8	398.7	41.10	10.701	
7,300.0	6,290.0	7,204.8	6,290.0	35.6	28.4	-89.87	564.3	1,190.9	439.8	396.6	43.16	10.191	
7,400.0	6,290.0	7,304.8	6,290.0	36.0	29.0	-89.87	664.3	1,190.7	439.8	394.4	45.45	9.677	
7,500.0	6,290.0	7,404.8	6,290.0	36.5	29.8	-89.87	764.3	1,190.5	439.8	391.9	47.94	9.175	
7,600.0	6,290.0	7,504.8	6,290.0	37.0	30.7	-89.87	864.3	1,190.4	439.8	389.2	50.60	8.693	
7,700.0	6,290.0	7,604.8	6,290.0	37.7	31.8	-89.87	964.3	1,190.2	439.8	386.4	53.40	8.236	
7,800.0	6,290.0	7,704.8	6,290.0	38.5	32.9	-89.87	1,064.3	1,190.1	439.8	383.5	56.32	7.809	
7,900.0	6,290.0	7,804.8	6,290.0	39.4	34.1	-89.87	1,164.3	1,189.9	439.8	380.5	59.35	7.410	
8,000.0	6,290.0	7,904.8	6,290.0	40.4	35.5	-89.87	1,264.3	1,189.8	439.8	377.4	62.47	7.040	
8,100.0	6,290.0	8,004.8	6,290.0	41.4	36.9	-89.87	1,364.3	1,189.6	439.8	374.2	65.67	6.698	
8,200.0	6,290.0	8,104.8	6,290.0	42.6	38.3	-89.87	1,464.3	1,189.5	439.8	370.9	68.93	6.381	
8,300.0	6,290.0	8,204.8	6,290.0	43.8	39.8	-89.87	1,564.3	1,189.3	439.8	367.6	72.25	6.088	
8,400.0	6,290.0	8,304.8	6,290.0	45.1	41.3	-89.87	1,664.3	1,189.1	439.8	364.2	75.62	5.817	
8,500.0	6,290.0	8,404.8	6,290.0	46.4	42.9	-89.87	1,764.3	1,189.0	439.9	360.8	79.03	5.566	
8,600.0	6,290.0	8,504.8	6,290.0	47.8	44.5	-89.87	1,864.3	1,188.8	439.9	357.4	82.48	5.333	
8,700.0	6,290.0	8,604.8	6,290.0	49.3	46.1	-89.87	1,964.3	1,188.7	439.9	353.9	85.96	5.117	
8,800.0	6,290.0	8,704.8	6,290.0	50.8	47.8	-89.87	2,064.3	1,188.5	439.9	350.4	89.47	4.916	
8,900.0	6,290.0	8,804.8	6,290.0	52.3	49.4	-89.87	2,164.3	1,188.4	439.9	346.9	93.01	4.729	
9,000.0	6,290.0	8,904.8	6,290.0	53.8	51.1	-89.87	2,264.3	1,18					

Offset Design SRC Markham Pad Sec.16-T4N-R68W - SRC Markham 31-16-9CHZ - Wellbore #1 - Plan #1 (3-31-14)												Offset Site Error: 0.0 ft	
Survey Program: 0-MWD												Offset Well Error: 0.0 ft	
Reference		Offset		Semi Major Axis			Distance						Warning
Measured Depth (ft)	Vertical Depth (ft)	Measured Depth (ft)	Vertical Depth (ft)	Reference (ft)	Offset (ft)	Highside Toolface (°)	Offset Wellbore Centre +N/-S (ft)	+E/-W (ft)	Between Centres (ft)	Between Ellipses (ft)	Minimum Separation (ft)	Separation Factor	
11,700.0	6,290.0	11,604.8	6,290.0	101.1	100.0	-89.87	4,964.3	1,184.0	440.0	243.2	196.74	2.236	
11,800.0	6,290.0	11,704.8	6,290.0	102.9	101.8	-89.87	5,064.3	1,183.8	440.0	239.5	200.52	2.194	
11,900.0	6,290.0	11,804.8	6,290.0	104.7	103.7	-89.87	5,164.3	1,183.6	440.0	235.7	204.30	2.154	
12,000.0	6,290.0	11,904.8	6,290.0	106.6	105.6	-89.87	5,264.3	1,183.5	440.0	231.9	208.09	2.115	
12,100.0	6,290.0	12,004.8	6,290.0	108.4	107.4	-89.87	5,364.3	1,183.3	440.0	228.1	211.87	2.077	
12,200.0	6,290.0	12,104.8	6,290.0	110.3	109.3	-89.87	5,464.3	1,183.2	440.0	224.4	215.66	2.040	
12,300.0	6,290.0	12,204.8	6,290.0	112.1	111.2	-89.87	5,564.3	1,183.0	440.0	220.6	219.45	2.005	
12,400.0	6,290.0	12,304.8	6,290.0	114.0	113.0	-89.87	5,664.3	1,182.9	440.0	216.8	223.24	1.971	
12,500.0	6,290.0	12,404.8	6,290.0	115.8	114.9	-89.87	5,764.3	1,182.7	440.0	213.0	227.03	1.938	
12,600.0	6,290.0	12,504.8	6,290.0	117.7	116.8	-89.87	5,864.3	1,182.5	440.0	209.2	230.83	1.906	
12,700.0	6,290.0	12,604.8	6,290.0	119.6	118.7	-89.87	5,964.3	1,182.4	440.0	205.4	234.62	1.875	
12,800.0	6,290.0	12,704.8	6,290.0	121.4	120.6	-89.87	6,064.3	1,182.2	440.0	201.6	238.42	1.846	
12,900.0	6,290.0	12,804.8	6,290.0	123.3	122.4	-89.87	6,164.3	1,182.1	440.0	197.8	242.22	1.817	
13,000.0	6,290.0	12,904.8	6,290.0	125.1	124.3	-89.87	6,264.3	1,181.9	440.0	194.0	246.02	1.789	
13,100.0	6,290.0	13,004.8	6,290.0	127.0	126.2	-89.87	6,364.3	1,181.8	440.1	190.2	249.82	1.761	
13,200.0	6,290.0	13,104.8	6,290.0	128.9	128.1	-89.87	6,464.3	1,181.6	440.1	186.4	253.63	1.735	
13,300.0	6,290.0	13,204.8	6,290.0	130.8	130.0	-89.87	6,564.3	1,181.4	440.1	182.6	257.43	1.709	
13,400.0	6,290.0	13,304.8	6,290.0	132.6	131.9	-89.87	6,664.3	1,181.3	440.1	178.8	261.23	1.685	
13,500.0	6,290.0	13,404.8	6,290.0	134.5	133.8	-89.87	6,764.3	1,181.1	440.1	175.0	265.04	1.660	
13,600.0	6,290.0	13,504.8	6,290.0	136.4	135.7	-89.87	6,864.3	1,181.0	440.1	171.2	268.85	1.637	
13,700.0	6,290.0	13,604.8	6,290.0	138.2	137.5	-89.87	6,964.3	1,180.8	440.1	167.4	272.66	1.614	
13,800.0	6,290.0	13,704.8	6,290.0	140.1	139.4	-89.87	7,064.3	1,180.7	440.1	163.6	276.46	1.592	
13,900.0	6,290.0	13,804.8	6,290.0	142.0	141.3	-89.87	7,164.3	1,180.5	440.1	159.8	280.27	1.570	
14,000.0	6,290.0	13,906.0	6,290.0	143.9	143.2	-89.87	7,265.5	1,180.4	440.1	156.0	284.11	1.549	
14,039.2	6,290.0	13,945.2	6,290.0	144.6	144.0	-89.87	7,304.7	1,180.4	440.0	154.4	285.60	1.540	
14,050.0	6,290.0	13,947.9	6,290.0	144.8	144.0	-89.87	7,307.3	1,180.4	440.0	154.2	285.86	1.539 SF	

Company:	Synergy Resources	Local Co-ordinate Reference:	Well SRC Markham C-16-9CHZ
Project:	Sec.16-T4N-R68W	TVD Reference:	WELL @ 4976.0ft (RKB - 13')
Reference Site:	SRC Markham Pad Sec.16-T4N-R68W	MD Reference:	WELL @ 4976.0ft (RKB - 13')
Site Error:	0.0ft	North Reference:	True
Reference Well:	SRC Markham C-16-9CHZ	Survey Calculation Method:	Minimum Curvature
Well Error:	0.0ft	Output errors are at	2.00 sigma
Reference Wellbore	Wellbore #1	Database:	Landmark
Reference Design:	Plan #1 (3-31-14)	Offset TVD Reference:	Offset Datum

Offset Design												Offset Site Error:	0.0 ft
Survey Program: 0-MWD												Offset Well Error:	0.0 ft
Reference		Offset		Semi Major Axis			Distance						
Measured Depth (ft)	Vertical Depth (ft)	Measured Depth (ft)	Vertical Depth (ft)	Reference (ft)	Offset (ft)	Highside Toolface (°)	Offset Wellbore Centre +N/-S (ft)	+E/-W (ft)	Between Centres (ft)	Between Ellipses (ft)	Minimum Separation (ft)	Separation Factor	Warning
0.0	0.0	1.0	1.0	0.0	0.0	-90.96	-0.4	-22.3	22.3	22.3	0.00	N/A	
100.0	100.0	101.0	101.0	0.1	0.1	-90.96	-0.4	-22.3	22.3	22.1	0.23	98.290	
200.0	200.0	201.0	201.0	0.3	0.3	-90.96	-0.4	-22.3	22.3	21.6	0.68	32.981	
300.0	300.0	301.0	301.0	0.6	0.6	-90.96	-0.4	-22.3	22.3	21.2	1.13	19.815	
400.0	400.0	401.0	401.0	0.8	0.8	-90.96	-0.4	-22.3	22.3	20.7	1.58	14.162	
500.0	500.0	501.0	501.0	1.0	1.0	-90.96	-0.4	-22.3	22.3	20.3	2.03	11.018	
600.0	600.0	601.0	601.0	1.2	1.2	-90.96	-0.4	-22.3	22.3	19.8	2.47	9.017	
700.0	700.0	701.0	701.0	1.5	1.5	-90.96	-0.4	-22.3	22.3	19.4	2.92	7.631	
800.0	800.0	801.0	801.0	1.7	1.7	-90.96	-0.4	-22.3	22.3	18.9	3.37	6.614	
900.0	900.0	901.0	901.0	1.9	1.9	-90.96	-0.4	-22.3	22.3	18.5	3.82	5.836	
1,000.0	1,000.0	1,001.0	1,001.0	2.1	2.1	-90.96	-0.4	-22.3	22.3	18.0	4.27	5.222	
1,100.0	1,100.0	1,101.0	1,101.0	2.4	2.4	-90.96	-0.4	-22.3	22.3	17.6	4.72	4.725	
1,200.0	1,200.0	1,201.0	1,201.0	2.6	2.6	-90.96	-0.4	-22.3	22.3	17.1	5.17	4.314 CC	
1,300.0	1,300.0	1,301.0	1,301.0	2.8	2.8	162.10	-0.4	-22.3	24.0	18.4	5.60	4.279	
1,400.0	1,399.8	1,400.8	1,400.8	3.0	3.0	165.25	-0.4	-22.3	29.0	23.0	6.01	4.823	
1,500.0	1,499.5	1,501.7	1,501.7	3.2	3.2	167.95	-1.0	-20.6	35.8	29.4	6.40	5.587	
1,600.0	1,598.7	1,602.8	1,602.6	3.4	3.4	169.56	-2.9	-15.6	42.6	35.8	6.77	6.288	
1,700.0	1,697.5	1,704.2	1,703.6	3.7	3.7	170.52	-6.2	-7.3	49.4	42.3	7.15	6.914	
1,800.0	1,795.6	1,805.8	1,804.4	4.0	3.9	171.07	-10.7	4.5	56.2	48.7	7.53	7.470	
1,900.0	1,893.1	1,907.6	1,905.0	4.3	4.1	171.34	-16.5	19.6	63.0	55.1	7.92	7.961	
2,000.0	1,989.6	2,009.7	2,005.1	4.7	4.4	171.41	-23.5	38.0	69.8	61.5	8.32	8.390	
2,100.0	2,085.3	2,112.0	2,104.7	5.2	4.8	171.33	-31.9	59.9	76.5	67.8	8.73	8.758	
2,200.0	2,179.8	2,214.6	2,203.7	5.8	5.2	171.15	-41.6	85.1	83.1	74.0	9.17	9.065	
2,300.0	2,273.5	2,317.5	2,301.9	6.4	5.7	170.80	-52.6	113.7	88.9	79.2	9.69	9.181	
2,400.0	2,367.1	2,419.8	2,398.4	7.0	6.2	170.05	-64.7	145.3	91.5	81.2	10.27	8.909	
2,500.0	2,460.6	2,519.8	2,492.5	7.7	6.8	169.22	-76.9	177.0	93.1	82.2	10.88	8.556	
2,600.0	2,554.2	2,619.8	2,586.5	8.4	7.4	168.42	-89.1	208.8	94.7	83.1	11.51	8.222	
2,700.0	2,647.8	2,719.7	2,680.5	9.0	8.0	167.64	-101.3	240.5	96.3	84.1	12.18	7.907	
2,800.0	2,741.4	2,819.7	2,774.5	9.7	8.7	166.90	-113.5	272.3	97.9	85.0	12.86	7.611	
2,900.0	2,835.0	2,919.7	2,868.5	10.5	9.4	166.17	-125.7	304.0	99.6	86.0	13.58	7.333	
3,000.0	2,928.6	3,019.7	2,962.5	11.2	10.0	165.47	-137.9	335.8	101.2	86.9	14.31	7.072	
3,100.0	3,022.2	3,119.7	3,056.5	11.9	10.7	164.79	-150.1	367.5	102.9	87.8	15.07	6.828	
3,200.0	3,115.8	3,219.6	3,150.6	12.6	11.4	164.14	-162.3	399.3	104.6	88.8	15.85	6.599	
3,300.0	3,209.4	3,319.6	3,244.6	13.4	12.1	163.50	-174.5	431.0	106.3	89.7	16.65	6.385	
3,400.0	3,303.0	3,419.6	3,338.6	14.1	12.8	162.89	-186.7	462.8	108.0	90.6	17.47	6.185	
3,500.0	3,396.6	3,519.6	3,432.6	14.8	13.5	162.29	-198.8	494.6	109.8	91.5	18.31	5.997	
3,600.0	3,490.2	3,619.5	3,526.6	15.6	14.2	161.71	-211.0	526.3	111.5	92.4	19.16	5.820	
3,700.0	3,583.7	3,719.5	3,620.6	16.3	14.9	161.15	-223.2	558.1	113.3	93.2	20.03	5.655	
3,800.0	3,677.3	3,819.5	3,714.6	17.0	15.6	160.61	-235.4	589.8	115.0	94.1	20.92	5.500	
3,900.0	3,770.9	3,919.5	3,808.7	17.8	16.3	160.09	-247.6	621.6	116.8	95.0	21.82	5.354	
4,000.0	3,864.5	4,019.5	3,902.7	18.5	17.0	159.58	-259.8	653.3	118.6	95.9	22.73	5.217	
4,100.0	3,958.1	4,119.4	3,996.7	19.3	17.7	159.08	-272.0	685.1	120.4	96.7	23.66	5.089	
4,200.0	4,051.7	4,219.4	4,090.7	20.0	18.4	158.60	-284.2	716.8	122.2	97.6	24.60	4.967	
4,300.0	4,145.3	4,319.4	4,184.7	20.8	19.1	158.14	-296.4	748.6	124.0	98.5	25.56	4.853	
4,400.0	4,238.9	4,419.4	4,278.7	21.5	19.9	157.68	-308.6	780.3	125.8	99.3	26.52	4.745	
4,500.0	4,332.5	4,519.4	4,372.7	22.3	20.6	157.24	-320.8	812.1	127.7	100.2	27.50	4.643	
4,600.0	4,426.1	4,619.3	4,466.8	23.0	21.3	156.82	-333.0	843.8	129.5	101.0	28.49	4.546	
4,700.0	4,519.7	4,719.3	4,560.8	23.8	22.0	156.40	-345.2	875.6	131.3	101.9	29.48	4.455	
4,800.0	4,613.2	4,819.3	4,654.8	24.5	22.7	156.00	-357.4	907.4	133.2	102.7	30.49	4.369	
4,900.0	4,706.8	4,919.3	4,748.8	25.3	23.4	155.60	-369.6	939.1	135.1	103.5	31.50	4.287	
5,000.0	4,800.4	5,019.2	4,842.8	26.0	24.2	155.22	-381.7	970.9	136.9	104.4	32.53	4.209	
5,100.0	4,894.0	5,119.2	4,936.8	26.8	24.9	154.85	-393.9	1,002.6	138.8	105.2	33.56	4.135	

CC - Min centre to center distance or convergent point, SF - min separation factor, ES - min ellipse separation

Company:	Synergy Resources	Local Co-ordinate Reference:	Well SRC Markham C-16-9CHZ
Project:	Sec.16-T4N-R68W	TVD Reference:	WELL @ 4976.0ft (RKB - 13')
Reference Site:	SRC Markham Pad Sec.16-T4N-R68W	MD Reference:	WELL @ 4976.0ft (RKB - 13')
Site Error:	0.0ft	North Reference:	True
Reference Well:	SRC Markham C-16-9CHZ	Survey Calculation Method:	Minimum Curvature
Well Error:	0.0ft	Output errors are at	2.00 sigma
Reference Wellbore	Wellbore #1	Database:	Landmark
Reference Design:	Plan #1 (3-31-14)	Offset TVD Reference:	Offset Datum

Offset Design												Offset Site Error:	0.0 ft
Survey Program: 0-MWD												Offset Well Error:	0.0 ft
Reference		Offset		Semi Major Axis			Distance						Warning
Measured Depth (ft)	Vertical Depth (ft)	Measured Depth (ft)	Vertical Depth (ft)	Reference (ft)	Offset (ft)	Highside Toolface (°)	Offset Wellbore Centre +N/-S (ft)	+E/-W (ft)	Between Centres (ft)	Between Ellipses (ft)	Minimum Separation (ft)	Separation Factor	
5,200.0	4,987.6	5,219.2	5,030.8	27.5	25.6	154.49	-406.1	1,034.4	140.7	106.1	34.60	4.065	
5,300.0	5,081.2	5,319.2	5,124.9	28.3	26.3	154.14	-418.3	1,066.1	142.5	106.9	35.65	3.998	
5,400.0	5,174.8	5,419.2	5,218.9	29.0	27.1	153.79	-430.5	1,097.9	144.4	107.7	36.70	3.935	
5,500.0	5,268.4	5,519.1	5,312.9	29.8	27.8	153.46	-442.7	1,129.6	146.3	108.5	37.77	3.874	
5,600.0	5,362.0	5,619.8	5,407.6	30.5	28.5	153.24	-454.7	1,161.6	148.2	109.4	38.77	3.821	
5,700.0	5,455.6	5,722.3	5,504.6	31.3	29.1	156.81	-457.0	1,194.4	148.7	110.9	37.79	3.935	
5,800.0	5,549.2	5,820.3	5,596.7	32.0	29.5	167.25	-445.5	1,225.4	149.8	115.2	34.63	4.327	
5,900.0	5,643.2	5,913.6	5,682.3	32.6	29.9	-160.80	-422.3	1,254.3	155.4	123.0	32.37	4.801	
6,000.0	5,736.7	6,003.9	5,761.7	33.1	30.2	-131.82	-388.8	1,281.1	165.1	132.4	32.62	5.061	
6,100.0	5,827.9	6,091.6	5,834.5	33.6	30.4	-109.71	-346.5	1,305.5	177.4	143.2	34.22	5.186	
6,200.0	5,914.9	6,177.1	5,900.2	34.0	30.6	-93.90	-296.5	1,327.6	191.2	155.4	35.75	5.347	
6,300.0	5,996.1	6,260.8	5,958.6	34.2	30.7	-82.59	-240.0	1,347.3	205.2	168.7	36.45	5.629	
6,400.0	6,069.9	6,342.9	6,009.4	34.5	30.8	-74.41	-177.9	1,364.3	218.6	182.5	36.10	6.056	
6,500.0	6,134.9	6,423.7	6,052.6	34.6	30.9	-68.43	-111.1	1,378.8	230.9	196.1	34.82	6.631	
6,600.0	6,189.7	6,500.0	6,086.5	34.8	30.9	-64.13	-43.8	1,390.1	241.5	208.6	32.84	7.353	
6,700.0	6,233.4	6,582.5	6,115.4	34.9	31.0	-60.98	32.9	1,399.8	250.0	219.3	30.68	8.149	
6,800.0	6,265.0	6,661.0	6,134.9	34.9	31.0	-58.91	108.5	1,406.2	256.2	227.5	28.72	8.921	
6,900.0	6,284.0	6,739.0	6,146.5	35.0	31.1	-57.73	185.6	1,410.0	260.0	232.6	27.48	9.461	
7,000.0	6,290.0	6,818.2	6,150.0	35.1	31.1	-57.35	264.6	1,411.1	261.3	233.8	27.51	9.499	
7,100.0	6,290.0	6,918.2	6,150.0	35.2	31.3	-57.35	364.6	1,410.9	261.3	233.0	28.35	9.219	
7,200.0	6,290.0	7,018.2	6,150.0	35.4	31.5	-57.35	464.6	1,410.8	261.3	231.5	29.88	8.746	
7,300.0	6,290.0	7,118.2	6,150.0	35.6	31.8	-57.35	564.6	1,410.6	261.3	229.6	31.69	8.247	
7,400.0	6,290.0	7,218.2	6,150.0	36.0	32.3	-57.35	664.6	1,410.5	261.3	227.6	33.73	7.748	
7,500.0	6,290.0	7,318.2	6,150.0	36.5	32.9	-57.35	764.6	1,410.3	261.3	225.4	35.96	7.267	
7,600.0	6,290.0	7,418.2	6,150.0	37.0	33.6	-57.35	864.6	1,410.2	261.3	223.0	38.35	6.814	
7,700.0	6,290.0	7,518.2	6,150.0	37.7	34.4	-57.35	964.6	1,410.0	261.3	220.5	40.88	6.393	
7,800.0	6,290.0	7,618.2	6,150.0	38.5	35.4	-57.35	1,064.6	1,409.9	261.3	217.8	43.51	6.006	
7,900.0	6,290.0	7,718.2	6,150.0	39.4	36.4	-57.35	1,164.6	1,409.7	261.3	215.1	46.23	5.653	
8,000.0	6,290.0	7,818.2	6,150.0	40.4	37.6	-57.35	1,264.6	1,409.6	261.3	212.3	49.03	5.330	
8,100.0	6,290.0	7,918.2	6,150.0	41.4	38.8	-57.35	1,364.6	1,409.4	261.3	209.4	51.89	5.036	
8,200.0	6,290.0	8,018.2	6,150.0	42.6	40.1	-57.35	1,464.6	1,409.3	261.3	206.5	54.80	4.769	
8,300.0	6,290.0	8,118.2	6,150.0	43.8	41.5	-57.35	1,564.6	1,409.1	261.3	203.6	57.76	4.524	
8,400.0	6,290.0	8,218.2	6,150.0	45.1	42.9	-57.35	1,664.6	1,409.0	261.3	200.6	60.75	4.301	
8,500.0	6,290.0	8,318.2	6,150.0	46.4	44.4	-57.35	1,764.6	1,408.8	261.3	197.5	63.78	4.097	
8,600.0	6,290.0	8,418.2	6,150.0	47.8	45.9	-57.35	1,864.6	1,408.7	261.3	194.5	66.84	3.910	
8,700.0	6,290.0	8,518.2	6,150.0	49.3	47.4	-57.35	1,964.6	1,408.5	261.3	191.4	69.92	3.737	
8,800.0	6,290.0	8,618.2	6,150.0	50.8	49.0	-57.35	2,064.6	1,408.4	261.3	188.3	73.03	3.578	
8,900.0	6,290.0	8,718.2	6,150.0	52.3	50.6	-57.35	2,164.6	1,408.2	261.3	185.2	76.15	3.432	
9,000.0	6,290.0	8,818.2	6,150.0	53.8	52.2	-57.35	2,264.6	1,408.0	261.3	182.0	79.29	3.296	
9,100.0	6,290.0	8,918.2	6,150.0	55.4	53.9	-57.35	2,364.6	1,407.9	261.3	178.9	82.44	3.170	
9,200.0	6,290.0	9,018.2	6,150.0	57.0	55.6	-57.35	2,464.6	1,407.7	261.3	175.7	85.61	3.052	
9,300.0	6,290.0	9,118.2	6,150.0	58.6	57.2	-57.35	2,564.6	1,407.6	261.3	172.5	88.79	2.943	
9,400.0	6,290.0	9,218.2	6,150.0	60.3	58.9	-57.35	2,664.6	1,407.4	261.3	169.3	91.98	2.841	
9,500.0	6,290.0	9,318.2	6,150.0	62.0	60.7	-57.35	2,764.6	1,407.3	261.3	166.1	95.18	2.746	
9,600.0	6,290.0	9,418.2	6,150.0	63.6	62.4	-57.35	2,864.6	1,407.1	261.3	162.9	98.39	2.656	
9,700.0	6,290.0	9,518.2	6,150.0	65.3	64.1	-57.35	2,964.6	1,407.0	261.3	159.7	101.60	2.572	
9,800.0	6,290.0	9,618.2	6,150.0	67.0	65.9	-57.35	3,064.6	1,406.8	261.3	156.5	104.82	2.493	
9,900.0	6,290.0	9,718.2	6,150.0	68.8	67.6	-57.35	3,164.6	1,406.7	261.3	153.3	108.05	2.418	
10,000.0	6,290.0	9,818.2	6,150.0	70.5	69.4	-57.35	3,264.6	1,406.5	261.3	150.0	111.29	2.348	
10,100.0	6,290.0	9,918.2	6,150.0	72.2	71.2	-57.34	3,364.6	1,406.4	261.3	146.8	114.53	2.282	
10,200.0	6,290.0	10,018.2	6,150.0	74.0	73.0	-57.34	3,464.6	1,406.2	261.3	143.5	117.77	2.219	
10,300.0	6,290.0	10,118.2	6,150.0	75.8	74.8	-57.34	3,564.6	1,406.1	261.3	140.3	121.02	2.159	

CC - Min centre to center distance or convergent point, SF - min separation factor, ES - min ellipse separation

Company:	Synergy Resources	Local Co-ordinate Reference:	Well SRC Markham C-16-9CHZ
Project:	Sec.16-T4N-R68W	TVD Reference:	WELL @ 4976.0ft (RKB - 13')
Reference Site:	SRC Markham Pad Sec.16-T4N-R68W	MD Reference:	WELL @ 4976.0ft (RKB - 13')
Site Error:	0.0ft	North Reference:	True
Reference Well:	SRC Markham C-16-9CHZ	Survey Calculation Method:	Minimum Curvature
Well Error:	0.0ft	Output errors are at	2.00 sigma
Reference Wellbore	Wellbore #1	Database:	Landmark
Reference Design:	Plan #1 (3-31-14)	Offset TVD Reference:	Offset Datum

Offset Design												Offset Site Error:	0.0 ft
Survey Program: 0-MWD												Offset Well Error:	0.0 ft
Reference		Offset		Semi Major Axis			Distance						Warning
Measured Depth (ft)	Vertical Depth (ft)	Measured Depth (ft)	Vertical Depth (ft)	Reference (ft)	Offset (ft)	Highside Toolface (°)	Offset Wellbore Centre +N/-S (ft)	+E/-W (ft)	Between Centres (ft)	Between Ellipses (ft)	Minimum Separation (ft)	Separation Factor	
10,400.0	6,290.0	10,218.2	6,150.0	77.5	76.6	-57.34	3,664.6	1,405.9	261.3	137.0	124.28	2.103	
10,500.0	6,290.0	10,318.2	6,150.0	79.3	78.4	-57.34	3,764.6	1,405.8	261.3	133.8	127.53	2.049	
10,600.0	6,290.0	10,418.2	6,150.0	81.1	80.2	-57.34	3,864.6	1,405.6	261.3	130.5	130.79	1.998	
10,700.0	6,290.0	10,518.2	6,150.0	82.9	82.0	-57.34	3,964.6	1,405.5	261.3	127.3	134.06	1.949	
10,800.0	6,290.0	10,618.2	6,150.0	84.7	83.8	-57.34	4,064.6	1,405.3	261.3	124.0	137.33	1.903	
10,900.0	6,290.0	10,718.2	6,150.0	86.5	85.6	-57.34	4,164.6	1,405.2	261.3	120.7	140.60	1.859	
11,000.0	6,290.0	10,818.2	6,150.0	88.3	87.5	-57.34	4,264.6	1,405.0	261.3	117.4	143.87	1.816	
11,100.0	6,290.0	10,918.2	6,150.0	90.1	89.3	-57.34	4,364.6	1,404.9	261.3	114.2	147.14	1.776	
11,200.0	6,290.0	11,018.2	6,150.0	91.9	91.1	-57.34	4,464.6	1,404.7	261.3	110.9	150.42	1.737	
11,300.0	6,290.0	11,118.2	6,150.0	93.7	93.0	-57.34	4,564.6	1,404.6	261.3	107.6	153.70	1.700	
11,400.0	6,290.0	11,218.2	6,150.0	95.6	94.8	-57.34	4,664.6	1,404.4	261.3	104.3	156.98	1.665	
11,500.0	6,290.0	11,318.2	6,150.0	97.4	96.7	-57.34	4,764.6	1,404.2	261.3	101.0	160.27	1.630	
11,600.0	6,290.0	11,418.2	6,150.0	99.2	98.5	-57.34	4,864.6	1,404.1	261.3	97.8	163.55	1.598	
11,700.0	6,290.0	11,518.2	6,150.0	101.1	100.4	-57.34	4,964.6	1,403.9	261.3	94.5	166.84	1.566	
11,800.0	6,290.0	11,618.2	6,150.0	102.9	102.2	-57.34	5,064.6	1,403.8	261.3	91.2	170.13	1.536	
11,900.0	6,290.0	11,718.2	6,150.0	104.7	104.1	-57.34	5,164.6	1,403.6	261.3	87.9	173.42	1.507	
12,000.0	6,290.0	11,818.2	6,150.0	106.6	105.9	-57.34	5,264.6	1,403.5	261.3	84.6	176.71	1.479 Level 3	
12,100.0	6,290.0	11,918.2	6,150.0	108.4	107.8	-57.34	5,364.6	1,403.3	261.3	81.3	180.00	1.452 Level 3	
12,200.0	6,290.0	12,018.2	6,150.0	110.3	109.7	-57.34	5,464.6	1,403.2	261.3	78.0	183.30	1.426 Level 3	
12,300.0	6,290.0	12,118.2	6,150.0	112.1	111.5	-57.34	5,564.6	1,403.0	261.3	74.7	186.59	1.400 Level 3	
12,400.0	6,290.0	12,218.2	6,150.0	114.0	113.4	-57.34	5,664.6	1,402.9	261.3	71.4	189.89	1.376 Level 3	
12,500.0	6,290.0	12,318.2	6,150.0	115.8	115.3	-57.34	5,764.6	1,402.7	261.3	68.1	193.19	1.353 Level 3	
12,600.0	6,290.0	12,418.2	6,150.0	117.7	117.1	-57.34	5,864.6	1,402.6	261.3	64.8	196.49	1.330 Level 3	
12,700.0	6,290.0	12,518.2	6,150.0	119.6	119.0	-57.34	5,964.6	1,402.4	261.3	61.5	199.79	1.308 Level 3	
12,800.0	6,290.0	12,618.2	6,150.0	121.4	120.9	-57.34	6,064.6	1,402.3	261.3	58.2	203.09	1.287 Level 3	
12,900.0	6,290.0	12,718.2	6,150.0	123.3	122.8	-57.34	6,164.6	1,402.1	261.3	54.9	206.39	1.266 Level 3	
13,000.0	6,290.0	12,818.2	6,150.0	125.1	124.6	-57.34	6,264.6	1,402.0	261.3	51.6	209.69	1.246 Level 2	
13,100.0	6,290.0	12,918.2	6,150.0	127.0	126.5	-57.34	6,364.6	1,401.8	261.3	48.3	212.99	1.227 Level 2	
13,200.0	6,290.0	13,018.2	6,150.0	128.9	128.4	-57.34	6,464.6	1,401.7	261.3	45.0	216.30	1.208 Level 2	
13,300.0	6,290.0	13,118.2	6,150.0	130.8	130.3	-57.34	6,564.6	1,401.5	261.3	41.7	219.60	1.190 Level 2	
13,400.0	6,290.0	13,218.2	6,150.0	132.6	132.1	-57.34	6,664.6	1,401.4	261.3	38.4	222.91	1.172 Level 2	
13,500.0	6,290.0	13,318.2	6,150.0	134.5	134.0	-57.34	6,764.6	1,401.2	261.3	35.1	226.21	1.155 Level 2	
13,600.0	6,290.0	13,418.2	6,150.0	136.4	135.9	-57.34	6,864.6	1,401.1	261.3	31.8	229.52	1.138 Level 2	
13,700.0	6,290.0	13,518.2	6,150.0	138.2	137.8	-57.34	6,964.6	1,400.9	261.3	28.5	232.83	1.122 Level 2	
13,800.0	6,290.0	13,618.2	6,150.0	140.1	139.7	-57.34	7,064.6	1,400.8	261.3	25.2	236.14	1.107 Level 2	
13,900.0	6,290.0	13,718.2	6,150.0	142.0	141.6	-57.34	7,164.6	1,400.6	261.3	21.8	239.44	1.091 Level 2	
14,000.0	6,290.0	13,818.2	6,150.0	143.9	143.5	-57.34	7,264.6	1,400.4	261.3	18.5	242.75	1.076 Level 2	
14,037.0	6,290.0	13,855.2	6,150.0	144.6	144.2	-57.34	7,301.7	1,400.4	261.3	17.3	243.98	1.071 Level 2	
14,050.0	6,290.0	13,864.6	6,150.0	144.8	144.3	-57.34	7,311.0	1,400.4	261.3	17.0	244.35	1.069 Level 2, ES, SF	

Company:	Synergy Resources	Local Co-ordinate Reference:	Well SRC Markham C-16-9CHZ
Project:	Sec.16-T4N-R68W	TVD Reference:	WELL @ 4976.0ft (RKB - 13')
Reference Site:	SRC Markham Pad Sec.16-T4N-R68W	MD Reference:	WELL @ 4976.0ft (RKB - 13')
Site Error:	0.0ft	North Reference:	True
Reference Well:	SRC Markham C-16-9CHZ	Survey Calculation Method:	Minimum Curvature
Well Error:	0.0ft	Output errors are at	2.00 sigma
Reference Wellbore	Wellbore #1	Database:	Landmark
Reference Design:	Plan #1 (3-31-14)	Offset TVD Reference:	Offset Datum

Offset Design SRC Markham Pad Sec.16-T4N-R68W - SRC Markham 41-16-9CHZ - Wellbore #1 - Plan #1 (3-31-14)													Offset Site Error:	0.0 ft
Survey Program: 0-MWD													Offset Well Error:	0.0 ft
Reference		Offset		Semi Major Axis			Distance							Warning
Measured Depth (ft)	Vertical Depth (ft)	Measured Depth (ft)	Vertical Depth (ft)	Reference (ft)	Offset (ft)	Highside Toolface (°)	Offset Wellbore Centre +N/-S (ft)	+E/-W (ft)	Between Centres (ft)	Between Ellipses (ft)	Minimum Separation (ft)	Separation Factor		
0.0	0.0	0.0	0.0	0.0	0.0	89.30	1.1	90.1	90.1					
100.0	100.0	100.0	100.0	0.1	0.1	89.30	1.1	90.1	90.1	89.9	0.22	400.789		
200.0	200.0	200.0	200.0	0.3	0.3	89.30	1.1	90.1	90.1	89.4	0.67	133.596		
300.0	300.0	300.0	300.0	0.6	0.6	89.30	1.1	90.1	90.1	89.0	1.12	80.158		
400.0	400.0	400.0	400.0	0.8	0.8	89.30	1.1	90.1	90.1	88.5	1.57	57.256 CC, ES		
500.0	500.0	497.0	497.0	1.0	1.0	89.53	0.8	91.7	91.7	89.7	2.00	45.819		
600.0	600.0	593.8	593.6	1.2	1.2	90.16	-0.3	96.5	96.7	94.3	2.43	39.795		
700.0	700.0	690.1	689.6	1.5	1.4	91.07	-2.0	104.4	105.0	102.1	2.88	36.505		
800.0	800.0	785.7	784.6	1.7	1.7	92.13	-4.3	115.4	116.5	113.2	3.34	34.845		
900.0	900.0	880.6	878.3	1.9	2.0	93.22	-7.3	129.4	131.4	127.6	3.84	34.182		
1,000.0	1,000.0	974.3	970.5	2.1	2.3	94.24	-10.8	146.2	149.5	145.2	4.38	34.133		
1,100.0	1,100.0	1,066.9	1,060.8	2.4	2.7	95.17	-15.0	165.6	170.9	165.9	4.96	34.458		
1,200.0	1,200.0	1,158.0	1,149.2	2.6	3.1	95.98	-19.7	187.6	195.3	189.8	5.58	35.008		
1,300.0	1,300.0	1,248.0	1,235.7	2.8	3.6	-11.61	-24.8	212.0	221.2	215.7	5.58	39.662		
1,400.0	1,399.8	1,337.4	1,320.8	3.0	4.1	-11.11	-30.5	238.8	246.9	240.8	6.01	41.076		
1,500.0	1,499.5	1,426.1	1,404.3	3.2	4.7	-10.78	-36.8	267.9	272.2	265.7	6.45	42.167		
1,600.0	1,598.7	1,514.2	1,486.4	3.4	5.3	-10.57	-43.4	299.4	297.1	290.2	6.91	43.024		
1,700.0	1,697.5	1,600.0	1,565.2	3.7	6.0	-10.45	-50.5	332.3	321.8	314.4	7.37	43.662		
1,800.0	1,795.6	1,691.7	1,648.5	4.0	6.8	-10.40	-58.5	370.0	345.8	338.0	7.87	43.942		
1,900.0	1,893.1	1,789.4	1,736.8	4.3	7.6	-10.45	-67.2	410.8	367.3	358.9	8.40	43.738		
2,000.0	1,989.6	1,887.7	1,825.7	4.7	8.5	-10.59	-75.9	451.8	385.5	376.5	8.95	43.083		
2,100.0	2,085.3	1,986.6	1,915.1	5.2	9.4	-10.83	-84.7	493.1	400.2	390.7	9.52	42.053		
2,200.0	2,179.8	2,085.9	2,005.0	5.8	10.3	-11.14	-93.5	534.5	411.6	401.5	10.11	40.713		
2,300.0	2,273.5	2,185.5	2,095.0	6.4	11.2	-11.55	-102.3	576.1	420.4	409.6	10.76	39.063		
2,400.0	2,367.1	2,285.1	2,185.1	7.0	12.1	-11.95	-111.2	617.7	429.0	417.5	11.45	37.474		
2,500.0	2,460.6	2,384.7	2,275.1	7.7	13.0	-12.34	-120.0	659.2	437.6	425.5	12.15	36.018		
2,600.0	2,554.2	2,484.2	2,365.2	8.4	14.0	-12.71	-128.9	700.8	446.3	433.5	12.87	34.682		
2,700.0	2,647.8	2,583.8	2,455.2	9.0	14.9	-13.07	-137.7	742.3	455.0	441.4	13.60	33.456		
2,800.0	2,741.4	2,683.4	2,545.3	9.7	15.8	-13.41	-146.6	783.9	463.7	449.4	14.34	32.328		
2,900.0	2,835.0	2,783.0	2,635.4	10.5	16.7	-13.74	-155.4	825.5	472.5	457.4	15.10	31.289		
3,000.0	2,928.6	2,882.6	2,725.4	11.2	17.6	-14.06	-164.3	867.0	481.2	465.3	15.87	30.329		
3,100.0	3,022.2	2,982.1	2,815.5	11.9	18.6	-14.37	-173.1	908.6	489.9	473.3	16.64	29.441		
3,200.0	3,115.8	3,081.7	2,905.5	12.6	19.5	-14.67	-182.0	950.2	498.7	481.3	17.43	28.617		
3,300.0	3,209.4	3,181.3	2,995.6	13.4	20.4	-14.95	-190.8	991.7	507.5	489.3	18.22	27.852		
3,400.0	3,303.0	3,280.9	3,085.7	14.1	21.3	-15.23	-199.7	1,033.3	516.3	497.3	19.02	27.140		
3,500.0	3,396.6	3,380.5	3,175.7	14.8	22.3	-15.50	-208.5	1,074.9	525.1	505.3	19.83	26.476		
3,600.0	3,490.2	3,480.1	3,265.8	15.6	23.2	-15.76	-217.4	1,116.4	533.9	513.3	20.65	25.855		
3,700.0	3,583.7	3,579.6	3,355.8	16.3	24.1	-16.01	-226.2	1,158.0	542.7	521.3	21.47	25.275		
3,800.0	3,677.3	3,679.2	3,445.9	17.0	25.0	-16.25	-235.1	1,199.6	551.6	529.3	22.30	24.730		
3,900.0	3,770.9	3,778.8	3,536.0	17.8	26.0	-16.49	-243.9	1,241.1	560.4	537.3	23.14	24.218		
4,000.0	3,864.5	3,878.4	3,626.0	18.5	26.9	-16.71	-252.7	1,282.7	569.3	545.3	23.98	23.737		
4,100.0	3,958.1	3,978.0	3,716.1	19.3	27.8	-16.93	-261.6	1,324.3	578.2	553.3	24.83	23.283		
4,200.0	4,051.7	4,077.5	3,806.1	20.0	28.8	-17.15	-270.4	1,365.8	587.0	561.3	25.68	22.855		
4,300.0	4,145.3	4,177.1	3,896.2	20.8	29.7	-17.36	-279.3	1,407.4	595.9	569.4	26.54	22.451		
4,400.0	4,238.9	4,276.7	3,986.2	21.5	30.6	-17.56	-288.1	1,449.0	604.8	577.4	27.41	22.068		
4,500.0	4,332.5	4,376.3	4,076.3	22.3	31.5	-17.75	-297.0	1,490.5	613.7	585.4	28.27	21.706		
4,600.0	4,426.1	4,475.9	4,166.4	23.0	32.5	-17.94	-305.8	1,532.1	622.6	593.4	29.15	21.362		
4,700.0	4,519.7	4,575.5	4,256.4	23.8	33.4	-18.13	-314.7	1,573.7	631.5	601.5	30.02	21.035		
4,800.0	4,613.2	4,675.0	4,346.5	24.5	34.3	-18.31	-323.5	1,615.2	640.4	609.5	30.90	20.724		
4,900.0	4,706.8	4,774.6	4,436.5	25.3	35.3	-18.48	-332.4	1,656.8	649.3	617.6	31.79	20.429		
5,000.0	4,800.4	4,874.2	4,526.6	26.0	36.2	-18.65	-341.2	1,698.3	658.3	625.6	32.67	20.147		
5,100.0	4,894.0	4,973.8	4,616.7	26.8	37.1	-18.82	-350.1	1,739.9	667.2	633.6	33.56	19.878		

CC - Min centre to center distance or convergent point, SF - min separation factor, ES - min ellipse separation

Company:	Synergy Resources	Local Co-ordinate Reference:	Well SRC Markham C-16-9CHZ
Project:	Sec.16-T4N-R68W	TVD Reference:	WELL @ 4976.0ft (RKB - 13')
Reference Site:	SRC Markham Pad Sec.16-T4N-R68W	MD Reference:	WELL @ 4976.0ft (RKB - 13')
Site Error:	0.0ft	North Reference:	True
Reference Well:	SRC Markham C-16-9CHZ	Survey Calculation Method:	Minimum Curvature
Well Error:	0.0ft	Output errors are at	2.00 sigma
Reference Wellbore	Wellbore #1	Database:	Landmark
Reference Design:	Plan #1 (3-31-14)	Offset TVD Reference:	Offset Datum

Offset Design												Offset Site Error:	0.0 ft
Survey Program: 0-MWD												Offset Well Error:	0.0 ft
Reference		Offset		Semi Major Axis			Distance						Warning
Measured Depth (ft)	Vertical Depth (ft)	Measured Depth (ft)	Vertical Depth (ft)	Reference (ft)	Offset (ft)	Highside Toolface (°)	Offset Wellbore Centre +N/-S (ft)	+E/-W (ft)	Between Centres (ft)	Between Ellipses (ft)	Minimum Separation (ft)	Separation Factor	
5,200.0	4,987.6	5,073.4	4,706.7	27.5	38.0	-18.98	-358.9	1,781.5	676.1	641.7	34.46	19.621	
5,300.0	5,081.2	5,172.9	4,796.8	28.3	39.0	-19.13	-367.8	1,823.0	685.1	649.7	35.36	19.376	
5,400.0	5,174.8	5,272.5	4,886.8	29.0	39.9	-19.29	-376.6	1,864.6	694.0	657.8	36.26	19.141	
5,500.0	5,268.4	5,372.1	4,976.9	29.8	40.8	-19.44	-385.5	1,906.2	703.0	665.8	37.16	18.916	
5,600.0	5,362.0	5,471.7	5,067.0	30.5	41.8	-19.58	-394.3	1,947.7	711.9	673.9	38.07	18.701	
5,700.0	5,455.6	5,571.3	5,157.0	31.3	42.7	-19.72	-403.1	1,989.3	720.9	681.9	38.98	18.495	
5,800.0	5,549.2	5,670.9	5,247.1	32.0	43.6	-18.03	-412.0	2,030.9	729.9	689.9	39.92	18.282	
5,900.0	5,643.2	5,770.2	5,336.9	32.6	44.5	3.75	-420.8	2,072.3	738.5	697.7	40.74	18.128	
6,000.0	5,736.7	5,867.7	5,425.1	33.1	45.5	24.77	-429.5	2,113.0	746.7	705.9	40.82	18.291	
6,100.0	5,827.9	5,961.5	5,510.0	33.6	46.3	41.15	-437.8	2,152.2	755.4	715.0	40.43	18.686	
6,200.0	5,914.9	6,050.7	5,590.6	34.0	47.2	53.16	-445.7	2,189.4	766.2	726.3	39.89	19.207	
6,300.0	5,996.1	6,148.8	5,679.6	34.2	47.9	62.24	-446.3	2,230.5	779.9	740.5	39.43	19.777	
6,400.0	6,069.9	6,255.9	5,775.8	34.5	48.7	69.25	-431.7	2,274.9	796.0	756.7	39.23	20.289	
6,500.0	6,134.9	6,374.5	5,878.9	34.6	49.4	74.93	-397.3	2,322.3	813.8	774.5	39.25	20.734	
6,600.0	6,189.7	6,507.9	5,986.7	34.8	50.1	79.69	-337.0	2,372.0	832.3	792.8	39.43	21.109	
6,700.0	6,233.4	6,659.2	6,094.3	34.9	50.7	83.70	-243.3	2,421.5	850.0	810.3	39.73	21.396	
6,800.0	6,265.0	6,830.6	6,191.5	34.9	51.2	86.93	-110.0	2,466.1	865.2	825.0	40.20	21.524	
6,900.0	6,284.0	7,021.1	6,262.6	35.0	51.5	89.13	63.2	2,498.7	875.7	834.7	41.02	21.348	
7,000.0	6,290.0	7,224.4	6,290.0	35.1	51.7	90.00	263.6	2,511.0	879.9	837.4	42.49	20.707	
7,100.0	6,290.0	7,327.1	6,290.0	35.2	51.7	90.00	366.3	2,510.8	879.9	836.4	43.49	20.231	
7,200.0	6,290.0	7,427.1	6,290.0	35.4	51.8	90.00	466.3	2,510.7	879.9	834.8	45.09	19.513	
7,300.0	6,290.0	7,527.1	6,290.0	35.6	52.0	90.00	566.3	2,510.5	879.9	832.9	46.95	18.740	
7,400.0	6,290.0	7,627.1	6,290.0	36.0	52.2	90.00	666.3	2,510.4	879.9	830.8	49.04	17.941	
7,500.0	6,290.0	7,727.1	6,290.0	36.5	52.4	90.00	766.3	2,510.2	879.9	828.5	51.34	17.139	
7,600.0	6,290.0	7,827.1	6,290.0	37.0	52.7	90.00	866.3	2,510.1	879.9	826.1	53.81	16.352	
7,700.0	6,290.0	7,927.1	6,290.0	37.7	53.0	90.00	966.3	2,509.9	879.9	823.4	56.43	15.592	
7,800.0	6,290.0	8,027.1	6,290.0	38.5	53.4	90.00	1,066.3	2,509.8	879.9	820.7	59.19	14.866	
7,900.0	6,290.0	8,127.1	6,290.0	39.4	53.9	90.00	1,166.3	2,509.6	879.9	817.8	62.06	14.179	
8,000.0	6,290.0	8,227.1	6,290.0	40.4	54.4	90.00	1,266.3	2,509.5	879.9	814.8	65.03	13.531	
8,100.0	6,290.0	8,327.1	6,290.0	41.4	54.9	90.00	1,366.3	2,509.3	879.9	811.8	68.08	12.923	
8,200.0	6,290.0	8,427.1	6,290.0	42.6	55.6	90.00	1,466.3	2,509.2	879.9	808.7	71.22	12.355	
8,300.0	6,290.0	8,527.1	6,290.0	43.8	56.3	90.00	1,566.3	2,509.0	879.9	805.5	74.42	11.823	
8,400.0	6,290.0	8,627.1	6,290.0	45.1	57.1	90.00	1,666.3	2,508.9	879.9	802.2	77.68	11.328	
8,500.0	6,290.0	8,727.1	6,290.0	46.4	57.9	90.00	1,766.3	2,508.7	879.9	798.9	80.98	10.865	
8,600.0	6,290.0	8,827.1	6,290.0	47.8	58.8	90.00	1,866.3	2,508.5	879.9	795.5	84.34	10.433	
8,700.0	6,290.0	8,927.1	6,290.0	49.3	59.8	90.00	1,966.3	2,508.4	879.9	792.1	87.73	10.029	
8,800.0	6,290.0	9,027.1	6,290.0	50.8	60.8	90.00	2,066.3	2,508.2	879.9	788.7	91.16	9.652	
8,900.0	6,290.0	9,127.1	6,290.0	52.3	61.9	90.00	2,166.3	2,508.1	879.9	785.3	94.62	9.299	
9,000.0	6,290.0	9,227.1	6,290.0	53.8	63.0	90.00	2,266.3	2,507.9	879.9	781.8	98.11	8.968	
9,100.0	6,290.0	9,327.1	6,290.0	55.4	64.2	90.00	2,366.3	2,507.8	879.9	778.3	101.62	8.658	
9,200.0	6,290.0	9,427.1	6,290.0	57.0	65.5	90.00	2,466.3	2,507.6	879.9	774.7	105.16	8.367	
9,300.0	6,290.0	9,527.1	6,290.0	58.6	66.7	90.00	2,566.3	2,507.5	879.9	771.2	108.72	8.093	
9,400.0	6,290.0	9,627.1	6,290.0	60.3	68.1	90.00	2,666.3	2,507.3	879.9	767.6	112.29	7.836	
9,500.0	6,290.0	9,727.1	6,290.0	62.0	69.4	90.00	2,766.3	2,507.2	879.9	764.0	115.89	7.593	
9,600.0	6,290.0	9,827.1	6,290.0	63.6	70.8	90.00	2,866.3	2,507.0	879.9	760.4	119.50	7.363	
9,700.0	6,290.0	9,927.1	6,290.0	65.3	72.3	90.00	2,966.3	2,506.9	879.9	756.8	123.12	7.147	
9,800.0	6,290.0	10,027.1	6,290.0	67.0	73.7	90.00	3,066.3	2,506.7	879.9	753.1	126.75	6.942	
9,900.0	6,290.0	10,127.1	6,290.0	68.8	75.2	90.00	3,166.3	2,506.6	879.9	749.5	130.40	6.748	
10,000.0	6,290.0	10,227.1	6,290.0	70.5	76.8	90.00	3,266.3	2,506.4	879.9	745.8	134.06	6.563	
10,100.0	6,290.0	10,327.1	6,290.0	72.2	78.3	90.00	3,366.3	2,506.3	879.9	742.2	137.73	6.389	
10,200.0	6,290.0	10,427.1	6,290.0	74.0	79.9	90.00	3,466.3	2,506.1	879.9	738.5	141.40	6.223	
10,300.0	6,290.0	10,527.1	6,290.0	75.8	81.4	90.00	3,566.3	2,506.0	879.9	734.8	145.09	6.064	

CC - Min centre to center distance or convergent point, SF - min separation factor, ES - min ellipse separation

Company:	Synergy Resources	Local Co-ordinate Reference:	Well SRC Markham C-16-9CHZ
Project:	Sec.16-T4N-R68W	TVD Reference:	WELL @ 4976.0ft (RKB - 13')
Reference Site:	SRC Markham Pad Sec.16-T4N-R68W	MD Reference:	WELL @ 4976.0ft (RKB - 13')
Site Error:	0.0ft	North Reference:	True
Reference Well:	SRC Markham C-16-9CHZ	Survey Calculation Method:	Minimum Curvature
Well Error:	0.0ft	Output errors are at	2.00 sigma
Reference Wellbore	Wellbore #1	Database:	Landmark
Reference Design:	Plan #1 (3-31-14)	Offset TVD Reference:	Offset Datum

Offset Design												Offset Site Error:	0.0 ft
Survey Program: 0-MWD												Offset Well Error:	0.0 ft
Reference		Offset		Semi Major Axis			Distance						Warning
Measured Depth (ft)	Vertical Depth (ft)	Measured Depth (ft)	Vertical Depth (ft)	Reference (ft)	Offset (ft)	Highside Toolface (°)	Offset Wellbore Centre +N/-S (ft)	+E/-W (ft)	Between Centres (ft)	Between Ellipses (ft)	Minimum Separation (ft)	Separation Factor	
10,400.0	6,290.0	10,627.1	6,290.0	77.5	83.0	90.00	3,666.3	2,505.8	879.9	731.1	148.78	5.914	
10,500.0	6,290.0	10,727.1	6,290.0	79.3	84.7	90.00	3,766.3	2,505.7	879.9	727.4	152.48	5.770	
10,600.0	6,290.0	10,827.1	6,290.0	81.1	86.3	90.00	3,866.3	2,505.5	879.9	723.7	156.19	5.633	
10,700.0	6,290.0	10,927.1	6,290.0	82.9	87.9	90.00	3,966.3	2,505.4	879.9	720.0	159.91	5.503	
10,800.0	6,290.0	11,027.1	6,290.0	84.7	89.6	90.00	4,066.3	2,505.2	879.9	716.3	163.62	5.377	
10,900.0	6,290.0	11,127.1	6,290.0	86.5	91.3	90.00	4,166.3	2,505.1	879.9	712.5	167.35	5.258	
11,000.0	6,290.0	11,227.1	6,290.0	88.3	93.0	90.00	4,266.3	2,504.9	879.9	708.8	171.08	5.143	
11,100.0	6,290.0	11,327.1	6,290.0	90.1	94.7	90.00	4,366.3	2,504.8	879.9	705.1	174.82	5.033	
11,200.0	6,290.0	11,427.1	6,290.0	91.9	96.4	90.00	4,466.3	2,504.6	879.9	701.3	178.56	4.928	
11,300.0	6,290.0	11,527.1	6,290.0	93.7	98.1	90.00	4,566.3	2,504.4	879.9	697.6	182.30	4.827	
11,400.0	6,290.0	11,627.1	6,290.0	95.6	99.8	90.00	4,666.3	2,504.3	879.9	693.8	186.05	4.729	
11,500.0	6,290.0	11,727.1	6,290.0	97.4	101.6	90.00	4,766.3	2,504.1	879.9	690.1	189.80	4.636	
11,600.0	6,290.0	11,827.1	6,290.0	99.2	103.3	90.00	4,866.3	2,504.0	879.9	686.3	193.55	4.546	
11,700.0	6,290.0	11,927.1	6,290.0	101.1	105.0	90.00	4,966.3	2,503.8	879.9	682.6	197.31	4.459	
11,800.0	6,290.0	12,027.1	6,290.0	102.9	106.8	90.00	5,066.3	2,503.7	879.9	678.8	201.07	4.376	
11,900.0	6,290.0	12,127.1	6,290.0	104.7	108.6	90.00	5,166.3	2,503.5	879.9	675.1	204.84	4.296	
12,000.0	6,290.0	12,227.1	6,290.0	106.6	110.3	90.00	5,266.3	2,503.4	879.9	671.3	208.61	4.218	
12,100.0	6,290.0	12,327.1	6,290.0	108.4	112.1	90.00	5,366.3	2,503.2	879.9	667.5	212.38	4.143	
12,200.0	6,290.0	12,427.1	6,290.0	110.3	113.9	90.00	5,466.3	2,503.1	879.9	663.8	216.15	4.071	
12,300.0	6,290.0	12,527.1	6,290.0	112.1	115.7	90.00	5,566.3	2,502.9	879.9	660.0	219.92	4.001	
12,400.0	6,290.0	12,627.1	6,290.0	114.0	117.5	90.00	5,666.3	2,502.8	879.9	656.2	223.70	3.933	
12,500.0	6,290.0	12,727.1	6,290.0	115.8	119.3	90.00	5,766.3	2,502.6	879.9	652.4	227.48	3.868	
12,600.0	6,290.0	12,827.1	6,290.0	117.7	121.1	90.00	5,866.3	2,502.5	879.9	648.6	231.26	3.805	
12,700.0	6,290.0	12,927.1	6,290.0	119.6	122.9	90.00	5,966.3	2,502.3	879.9	644.9	235.04	3.744	
12,800.0	6,290.0	13,027.1	6,290.0	121.4	124.7	90.00	6,066.3	2,502.2	879.9	641.1	238.83	3.684	
12,900.0	6,290.0	13,127.1	6,290.0	123.3	126.5	90.00	6,166.3	2,502.0	879.9	637.3	242.62	3.627	
13,000.0	6,290.0	13,227.1	6,290.0	125.1	128.3	90.00	6,266.3	2,501.9	879.9	633.5	246.40	3.571	
13,100.0	6,290.0	13,327.1	6,290.0	127.0	130.1	90.00	6,366.3	2,501.7	879.9	629.7	250.19	3.517	
13,200.0	6,290.0	13,427.1	6,290.0	128.9	131.9	90.00	6,466.3	2,501.6	879.9	625.9	253.99	3.464	
13,300.0	6,290.0	13,527.1	6,290.0	130.8	133.7	90.00	6,566.3	2,501.4	879.9	622.1	257.78	3.413	
13,400.0	6,290.0	13,627.1	6,290.0	132.6	135.6	90.00	6,666.3	2,501.3	879.9	618.3	261.57	3.364	
13,500.0	6,290.0	13,727.1	6,290.0	134.5	137.4	90.00	6,766.3	2,501.1	879.9	614.5	265.37	3.316	
13,600.0	6,290.0	13,827.1	6,290.0	136.4	139.2	90.00	6,866.3	2,501.0	879.9	610.7	269.17	3.269	
13,700.0	6,290.0	13,927.1	6,290.0	138.2	141.1	90.00	6,966.3	2,500.8	879.9	607.0	272.96	3.224	
13,800.0	6,290.0	14,027.1	6,290.0	140.1	142.9	90.00	7,066.3	2,500.6	879.9	603.2	276.76	3.179	
13,900.0	6,290.0	14,127.1	6,290.0	142.0	144.7	90.00	7,166.3	2,500.5	879.9	599.4	280.57	3.136	
14,000.0	6,290.0	14,227.1	6,290.0	143.9	146.6	90.00	7,266.3	2,500.3	879.9	595.6	284.37	3.094	
14,050.0	6,290.0	14,277.2	6,290.0	144.8	147.5	90.00	7,316.3	2,500.3	879.9	593.7	286.27	3.074 SF	

Company:	Synergy Resources	Local Co-ordinate Reference:	Well SRC Markham C-16-9CHZ
Project:	Sec.16-T4N-R68W	TVD Reference:	WELL @ 4976.0ft (RKB - 13')
Reference Site:	SRC Markham Pad Sec.16-T4N-R68W	MD Reference:	WELL @ 4976.0ft (RKB - 13')
Site Error:	0.0ft	North Reference:	True
Reference Well:	SRC Markham C-16-9CHZ	Survey Calculation Method:	Minimum Curvature
Well Error:	0.0ft	Output errors are at	2.00 sigma
Reference Wellbore	Wellbore #1	Database:	Landmark
Reference Design:	Plan #1 (3-31-14)	Offset TVD Reference:	Offset Datum

Offset Design SRC Markham Pad Sec.16-T4N-R68W - SRC Markham 41-16-9NHZ - Wellbore #1 - Plan #1 (3-31-14)													Offset Site Error:	0.0ft
Survey Program: 0-MWD													Offset Well Error:	0.0ft
Reference		Offset		Semi Major Axis			Distance							Warning
Measured Depth (ft)	Vertical Depth (ft)	Measured Depth (ft)	Vertical Depth (ft)	Reference (ft)	Offset (ft)	Highside Toolface (°)	Offset Wellbore Centre +N/-S (ft)	+E/-W (ft)	Between Centres (ft)	Between Ellipses (ft)	Minimum Separation (ft)	Separation Factor		
0.0	0.0	0.0	0.0	0.0	0.0	89.45	1.1	112.7	112.7					
100.0	100.0	100.0	100.0	0.1	0.1	89.45	1.1	112.7	112.7	112.4	0.22	501.283		
200.0	200.0	200.0	200.0	0.3	0.3	89.45	1.1	112.7	112.7	112.0	0.67	167.094 CC, ES		
300.0	300.0	296.3	296.2	0.6	0.5	89.61	0.8	114.3	114.3	113.2	1.10	103.574		
400.0	400.0	392.3	392.1	0.8	0.8	90.07	-0.2	119.0	119.3	117.7	1.54	77.472		
500.0	500.0	487.9	487.4	1.0	1.0	90.76	-1.7	126.9	127.5	125.5	2.00	63.867		
600.0	600.0	582.9	581.7	1.2	1.3	91.59	-3.8	137.7	139.0	136.5	2.48	56.068		
700.0	700.0	677.0	674.8	1.5	1.6	92.46	-6.5	151.5	153.8	150.8	2.99	51.354		
800.0	800.0	770.1	766.3	1.7	1.9	93.32	-9.8	168.2	171.8	168.2	3.55	48.429		
900.0	900.0	862.0	856.1	1.9	2.3	94.12	-13.5	187.4	192.9	188.8	4.14	46.604		
1,000.0	1,000.0	952.5	943.9	2.1	2.7	94.85	-17.8	209.1	217.2	212.5	4.78	45.487		
1,100.0	1,100.0	1,041.5	1,029.5	2.4	3.2	95.50	-22.4	233.1	244.6	239.1	5.45	44.842		
1,200.0	1,200.0	1,128.9	1,112.7	2.6	3.8	96.06	-27.5	259.2	274.9	268.7	6.17	44.523		
1,300.0	1,300.0	1,215.1	1,194.0	2.8	4.3	-11.68	-33.0	287.3	306.4	300.7	5.70	53.768		
1,400.0	1,399.8	1,300.0	1,273.2	3.0	5.0	-11.29	-38.9	317.4	337.6	331.5	6.14	54.957		
1,500.0	1,499.5	1,385.2	1,351.7	3.2	5.6	-11.01	-45.3	349.9	368.3	361.7	6.60	55.790		
1,600.0	1,598.7	1,469.3	1,428.2	3.4	6.4	-10.82	-51.9	384.2	398.6	391.5	7.08	56.333		
1,700.0	1,697.5	1,554.0	1,504.2	3.7	7.1	-10.71	-59.1	420.9	428.4	420.8	7.57	56.607		
1,800.0	1,795.6	1,650.1	1,589.9	4.0	8.1	-10.68	-67.5	463.6	456.0	447.9	8.10	56.267		
1,900.0	1,893.1	1,747.1	1,676.4	4.3	9.0	-10.74	-75.9	506.6	480.3	471.6	8.66	55.469		
2,000.0	1,989.6	1,844.9	1,763.6	4.7	10.0	-10.87	-84.3	550.0	501.2	492.0	9.23	54.284		
2,100.0	2,085.3	1,943.3	1,851.4	5.2	10.9	-11.07	-92.9	593.6	518.8	509.0	9.83	52.784		
2,200.0	2,179.8	2,042.2	1,939.6	5.8	11.9	-11.34	-101.4	637.6	533.1	522.6	10.45	51.025		
2,300.0	2,273.5	2,141.5	2,028.2	6.4	12.9	-11.70	-110.0	681.6	544.7	533.6	11.12	48.994		
2,400.0	2,367.1	2,240.8	2,116.7	7.0	13.8	-12.05	-118.7	725.7	556.2	544.4	11.82	47.057		
2,500.0	2,460.6	2,340.0	2,205.3	7.7	14.8	-12.39	-127.3	769.7	567.8	555.2	12.54	45.285		
2,600.0	2,554.2	2,439.3	2,293.8	8.4	15.8	-12.72	-135.9	813.8	579.3	566.1	13.27	43.662		
2,700.0	2,647.8	2,538.6	2,382.4	9.0	16.8	-13.03	-144.5	857.8	590.9	576.9	14.01	42.172		
2,800.0	2,741.4	2,637.9	2,470.9	9.7	17.8	-13.34	-153.1	901.9	602.5	587.7	14.77	40.802		
2,900.0	2,835.0	2,737.1	2,559.5	10.5	18.8	-13.63	-161.7	945.9	614.1	598.6	15.53	39.540		
3,000.0	2,928.6	2,836.4	2,648.0	11.2	19.7	-13.91	-170.3	990.0	625.7	609.4	16.31	38.375		
3,100.0	3,022.2	2,935.7	2,736.5	11.9	20.7	-14.18	-178.9	1,034.0	637.4	620.3	17.09	37.297		
3,200.0	3,115.8	3,035.0	2,825.1	12.6	21.7	-14.44	-187.5	1,078.1	649.0	631.1	17.88	36.298		
3,300.0	3,209.4	3,134.3	2,913.6	13.4	22.7	-14.69	-196.1	1,122.2	660.7	642.0	18.68	35.369		
3,400.0	3,303.0	3,233.5	3,002.2	14.1	23.7	-14.93	-204.7	1,166.2	672.4	652.9	19.49	34.505		
3,500.0	3,396.6	3,332.8	3,090.7	14.8	24.7	-15.17	-213.3	1,210.3	684.0	663.8	20.30	33.698		
3,600.0	3,490.2	3,432.1	3,179.3	15.6	25.7	-15.39	-221.9	1,254.3	695.7	674.6	21.12	32.945		
3,700.0	3,583.7	3,531.4	3,267.8	16.3	26.7	-15.61	-230.5	1,298.4	707.5	685.5	21.94	32.239		
3,800.0	3,677.3	3,630.6	3,356.4	17.0	27.6	-15.83	-239.1	1,342.4	719.2	696.4	22.78	31.577		
3,900.0	3,770.9	3,729.9	3,444.9	17.8	28.6	-16.03	-247.7	1,386.5	730.9	707.3	23.61	30.955		
4,000.0	3,864.5	3,829.2	3,533.5	18.5	29.6	-16.23	-256.3	1,430.6	742.6	718.2	24.45	30.369		
4,100.0	3,958.1	3,928.5	3,622.0	19.3	30.6	-16.42	-264.9	1,474.6	754.4	729.1	25.30	29.817		
4,200.0	4,051.7	4,027.7	3,710.6	20.0	31.6	-16.61	-273.6	1,518.7	766.1	740.0	26.15	29.296		
4,300.0	4,145.3	4,127.0	3,799.1	20.8	32.6	-16.79	-282.2	1,562.7	777.9	750.9	27.01	28.804		
4,400.0	4,238.9	4,226.3	3,887.7	21.5	33.6	-16.96	-290.8	1,606.8	789.7	761.8	27.87	28.338		
4,500.0	4,332.5	4,325.6	3,976.2	22.3	34.6	-17.13	-299.4	1,650.8	801.5	772.7	28.73	27.896		
4,600.0	4,426.1	4,424.8	4,064.8	23.0	35.6	-17.30	-308.0	1,694.9	813.2	783.6	29.60	27.476		
4,700.0	4,519.7	4,524.1	4,153.3	23.8	36.6	-17.46	-316.6	1,738.9	825.0	794.6	30.47	27.078		
4,800.0	4,613.2	4,623.4	4,241.9	24.5	37.5	-17.62	-325.2	1,783.0	836.8	805.5	31.34	26.699		
4,900.0	4,706.8	4,722.7	4,330.4	25.3	38.5	-17.77	-333.8	1,827.1	848.6	816.4	32.22	26.338		
5,000.0	4,800.4	4,822.0	4,419.0	26.0	39.5	-17.92	-342.4	1,871.1	860.4	827.3	33.10	25.993		
5,100.0	4,894.0	4,921.2	4,507.5	26.8	40.5	-18.06	-351.0	1,915.2	872.2	838.3	33.99	25.665		

CC - Min centre to center distance or convergent point, SF - min separation factor, ES - min ellipse separation

Company:	Synergy Resources	Local Co-ordinate Reference:	Well SRC Markham C-16-9CHZ
Project:	Sec.16-T4N-R68W	TVD Reference:	WELL @ 4976.0ft (RKB - 13')
Reference Site:	SRC Markham Pad Sec.16-T4N-R68W	MD Reference:	WELL @ 4976.0ft (RKB - 13')
Site Error:	0.0ft	North Reference:	True
Reference Well:	SRC Markham C-16-9CHZ	Survey Calculation Method:	Minimum Curvature
Well Error:	0.0ft	Output errors are at	2.00 sigma
Reference Wellbore	Wellbore #1	Database:	Landmark
Reference Design:	Plan #1 (3-31-14)	Offset TVD Reference:	Offset Datum

Offset Design												Offset Site Error:	0.0 ft
SRC Markham Pad Sec.16-T4N-R68W - SRC Markham 41-16-9NHZ - Wellbore #1 - Plan #1 (3-31-14)												Offset Well Error:	0.0 ft
Survey Program: 0-MWD													
Reference		Offset		Semi Major Axis			Distance						
Measured Depth (ft)	Vertical Depth (ft)	Measured Depth (ft)	Vertical Depth (ft)	Reference (ft)	Offset (ft)	Highside Toolface (°)	Offset Wellbore Centre +N/-S (ft)	+E/-W (ft)	Between Centres (ft)	Between Ellipses (ft)	Minimum Separation (ft)	Separation Factor	Warning
5,200.0	4,987.6	5,020.5	4,596.1	27.5	41.5	-18.20	-359.6	1,959.2	884.1	849.2	34.87	25.351	
5,300.0	5,081.2	5,119.8	4,684.6	28.3	42.5	-18.34	-368.2	2,003.3	895.9	860.1	35.76	25.051	
5,400.0	5,174.8	5,219.1	4,773.2	29.0	43.5	-18.47	-376.8	2,047.3	907.7	871.1	36.66	24.764	
5,500.0	5,268.4	5,318.3	4,861.7	29.8	44.5	-18.60	-385.4	2,091.4	919.5	882.0	37.55	24.488	
5,600.0	5,362.0	5,417.6	4,950.3	30.5	45.5	-18.72	-394.0	2,135.5	931.4	892.9	38.45	24.225	
5,700.0	5,455.6	5,516.9	5,038.8	31.3	46.5	-18.85	-402.6	2,179.5	943.2	903.9	39.35	23.972	
5,800.0	5,549.2	5,616.2	5,127.4	32.0	47.5	-17.16	-411.2	2,223.6	955.1	914.8	40.30	23.702	
5,900.0	5,643.2	5,715.2	5,215.7	32.6	48.4	4.25	-419.8	2,267.5	966.6	925.3	41.33	23.386 SF	
6,000.0	5,736.7	5,812.5	5,302.5	33.1	49.4	24.65	-428.3	2,310.7	977.9	936.1	41.77	23.413	
6,100.0	5,827.9	5,906.1	5,385.9	33.6	50.3	40.24	-436.4	2,352.2	989.4	947.7	41.73	23.707	

Company:	Synergy Resources	Local Co-ordinate Reference:	Well SRC Markham C-16-9CHZ
Project:	Sec.16-T4N-R68W	TVD Reference:	WELL @ 4976.0ft (RKB - 13')
Reference Site:	SRC Markham Pad Sec.16-T4N-R68W	MD Reference:	WELL @ 4976.0ft (RKB - 13')
Site Error:	0.0ft	North Reference:	True
Reference Well:	SRC Markham C-16-9CHZ	Survey Calculation Method:	Minimum Curvature
Well Error:	0.0ft	Output errors are at	2.00 sigma
Reference Wellbore	Wellbore #1	Database:	Landmark
Reference Design:	Plan #1 (3-31-14)	Offset TVD Reference:	Offset Datum

Offset Design													Offset Site Error:	0.0 ft
Survey Program: 0-MWD													Offset Well Error:	0.0 ft
Reference		Offset		Semi Major Axis			Distance							Warning
Measured Depth (ft)	Vertical Depth (ft)	Measured Depth (ft)	Vertical Depth (ft)	Reference (ft)	Offset (ft)	Highside Toolface (°)	Offset Wellbore Centre +N/-S (ft)	+E/-W (ft)	Between Centres (ft)	Between Ellipses (ft)	Minimum Separation (ft)	Separation Factor		
0.0	0.0	0.0	0.0	0.0	0.0	89.07	0.4	22.6	22.6					
100.0	100.0	100.0	100.0	0.1	0.1	89.07	0.4	22.6	22.6	22.4	0.22	100.513		
200.0	200.0	200.0	200.0	0.3	0.3	89.07	0.4	22.6	22.6	21.9	0.67	33.504		
300.0	300.0	300.0	300.0	0.6	0.6	89.07	0.4	22.6	22.6	21.5	1.12	20.103		
400.0	400.0	400.0	400.0	0.8	0.8	89.07	0.4	22.6	22.6	21.0	1.57	14.359		
500.0	500.0	500.0	500.0	1.0	1.0	89.07	0.4	22.6	22.6	20.6	2.02	11.168		
600.0	600.0	600.0	600.0	1.2	1.2	89.07	0.4	22.6	22.6	20.1	2.47	9.138		
700.0	700.0	700.0	700.0	1.5	1.5	89.07	0.4	22.6	22.6	19.7	2.92	7.732		
800.0	800.0	800.0	800.0	1.7	1.7	89.07	0.4	22.6	22.6	19.2	3.37	6.701		
900.0	900.0	900.0	900.0	1.9	1.9	89.07	0.4	22.6	22.6	18.8	3.82	5.913		
1,000.0	1,000.0	1,000.0	1,000.0	2.1	2.1	89.07	0.4	22.6	22.6	18.3	4.27	5.290 CC		
1,100.0	1,100.0	1,099.2	1,099.2	2.4	2.3	90.27	-0.1	24.2	24.3	19.5	4.70	5.158		
1,200.0	1,200.0	1,198.2	1,198.0	2.6	2.5	93.06	-1.6	29.2	29.3	24.2	5.12	5.714		
1,300.0	1,300.0	1,296.9	1,296.3	2.8	2.7	-12.82	-4.0	37.3	36.0	30.5	5.52	6.525		
1,400.0	1,399.8	1,395.3	1,394.0	3.0	3.0	-11.32	-7.3	48.7	42.8	36.9	5.91	7.243		
1,500.0	1,499.5	1,493.5	1,491.1	3.2	3.2	-10.38	-11.6	63.3	49.5	43.2	6.30	7.863		
1,600.0	1,598.7	1,591.5	1,587.3	3.4	3.5	-9.79	-16.7	81.0	56.3	49.6	6.70	8.397		
1,700.0	1,697.5	1,689.2	1,682.6	3.7	3.9	-9.43	-22.8	101.8	62.9	55.8	7.11	8.852		
1,800.0	1,795.6	1,786.8	1,776.9	4.0	4.3	-9.24	-29.8	125.6	69.5	62.0	7.53	9.236		
1,900.0	1,893.1	1,884.1	1,870.1	4.3	4.8	-9.18	-37.7	152.5	76.0	68.1	7.96	9.554		
2,000.0	1,989.6	1,981.2	1,962.2	4.7	5.3	-9.21	-46.4	182.3	82.5	74.1	8.41	9.813		
2,100.0	2,085.3	2,078.2	2,052.9	5.2	5.9	-9.31	-56.0	215.0	88.9	80.0	8.88	10.010		
2,200.0	2,179.8	2,176.3	2,143.7	5.8	6.6	-9.50	-66.5	250.8	94.8	85.4	9.37	10.111		
2,300.0	2,273.5	2,276.3	2,235.9	6.4	7.3	-9.91	-77.3	287.7	98.6	88.6	9.95	9.905		
2,400.0	2,367.1	2,376.2	2,328.2	7.0	8.1	-10.31	-88.2	324.5	102.2	91.6	10.58	9.665		
2,500.0	2,460.6	2,476.1	2,420.4	7.7	8.9	-10.68	-99.0	361.4	105.9	94.6	11.22	9.436		
2,600.0	2,554.2	2,576.0	2,512.7	8.4	9.6	-11.02	-109.8	398.3	109.5	97.6	11.88	9.218		
2,700.0	2,647.8	2,676.0	2,604.9	9.0	10.4	-11.35	-120.6	435.2	113.1	100.6	12.55	9.014		
2,800.0	2,741.4	2,775.9	2,697.2	9.7	11.2	-11.65	-131.4	472.1	116.8	103.6	13.24	8.821		
2,900.0	2,835.0	2,875.8	2,789.4	10.5	12.0	-11.94	-142.2	508.9	120.4	106.5	13.94	8.640		
3,000.0	2,928.6	2,975.8	2,881.7	11.2	12.8	-12.20	-153.0	545.8	124.1	109.5	14.65	8.470		
3,100.0	3,022.2	3,075.7	2,973.9	11.9	13.6	-12.46	-163.8	582.7	127.8	112.4	15.37	8.311		
3,200.0	3,115.8	3,175.6	3,066.2	12.6	14.4	-12.69	-174.6	619.6	131.4	115.3	16.10	8.162		
3,300.0	3,209.4	3,275.6	3,158.4	13.4	15.2	-12.92	-185.5	656.4	135.1	118.3	16.84	8.022		
3,400.0	3,303.0	3,375.5	3,250.6	14.1	16.0	-13.13	-196.3	693.3	138.8	121.2	17.58	7.891		
3,500.0	3,396.6	3,475.4	3,342.9	14.8	16.9	-13.34	-207.1	730.2	142.4	124.1	18.34	7.768		
3,600.0	3,490.2	3,575.4	3,435.1	15.6	17.7	-13.53	-217.9	767.1	146.1	127.0	19.09	7.652		
3,700.0	3,583.7	3,675.3	3,527.4	16.3	18.5	-13.71	-228.7	804.0	149.8	129.9	19.85	7.543		
3,800.0	3,677.3	3,775.2	3,619.6	17.0	19.3	-13.89	-239.5	840.8	153.4	132.8	20.62	7.440		
3,900.0	3,770.9	3,875.2	3,711.9	17.8	20.1	-14.05	-250.3	877.7	157.1	135.7	21.39	7.343		
4,000.0	3,864.5	3,975.1	3,804.1	18.5	21.0	-14.21	-261.1	914.6	160.8	138.6	22.17	7.252		
4,100.0	3,958.1	4,075.0	3,896.4	19.3	21.8	-14.36	-272.0	951.5	164.5	141.5	22.95	7.165		
4,200.0	4,051.7	4,175.0	3,988.6	20.0	22.6	-14.51	-282.8	988.3	168.1	144.4	23.74	7.084		
4,300.0	4,145.3	4,274.9	4,080.9	20.8	23.4	-14.65	-293.6	1,025.2	171.8	147.3	24.52	7.006		
4,400.0	4,238.9	4,374.8	4,173.1	21.5	24.3	-14.78	-304.4	1,062.1	175.5	150.2	25.31	6.933		
4,500.0	4,332.5	4,474.7	4,265.4	22.3	25.1	-14.91	-315.2	1,099.0	179.2	153.1	26.11	6.863		
4,600.0	4,426.1	4,574.7	4,357.6	23.0	25.9	-15.03	-326.0	1,135.9	182.9	155.9	26.90	6.796		
4,700.0	4,519.7	4,674.6	4,449.8	23.8	26.7	-15.15	-336.8	1,172.7	186.5	158.8	27.70	6.733		
4,800.0	4,613.2	4,774.5	4,542.1	24.5	27.6	-15.26	-347.6	1,209.6	190.2	161.7	28.51	6.673		
4,900.0	4,706.8	4,874.5	4,634.3	25.3	28.4	-15.37	-358.4	1,246.5	193.9	164.6	29.31	6.616		
5,000.0	4,800.4	4,974.4	4,726.6	26.0	29.2	-15.47	-369.3	1,283.4	197.6	167.5	30.12	6.561		
5,100.0	4,894.0	5,074.3	4,818.8	26.8	30.0	-15.57	-380.1	1,320.2	201.3	170.3	30.92	6.509		

CC - Min centre to center distance or convergent point, SF - min separation factor, ES - min ellipse separation

Offset Design										SRC Markham Pad Sec.16-T4N-R68W - SRC Markham C-16-9NHZ - Wellbore #1 - Plan #1 (3-31-14)				Offset Site Error:		0.0 ft
Survey Program: 0-MWD														Offset Well Error:		0.0 ft
Reference		Offset		Semi Major Axis			Distance									
Measured Depth (ft)	Vertical Depth (ft)	Measured Depth (ft)	Vertical Depth (ft)	Reference (ft)	Offset (ft)	Highside Toolface (°)	Offset Wellbore Centre +N/-S (ft)	+E/-W (ft)	Between Centres (ft)	Between Ellipses (ft)	Minimum Separation (ft)	Separation Factor	Warning			
5,200.0	4,987.6	5,174.3	4,911.1	27.5	30.9	-15.67	-390.9	1,357.1	205.0	173.2	31.73	6.459				
5,300.0	5,081.2	5,274.2	5,003.3	28.3	31.7	-15.76	-401.7	1,394.0	208.6	176.1	32.55	6.411				
5,400.0	5,174.8	5,374.1	5,095.6	29.0	32.5	-15.85	-412.5	1,430.9	212.3	179.0	33.36	6.365				
5,500.0	5,268.4	5,474.1	5,187.8	29.8	33.4	-15.94	-423.3	1,467.8	216.0	181.8	34.17	6.321				
5,600.0	5,362.0	5,574.0	5,280.1	30.5	34.2	-16.03	-434.1	1,504.6	219.7	184.7	34.99	6.279				
5,700.0	5,455.6	5,673.9	5,372.3	31.3	35.0	-16.11	-444.9	1,541.5	223.4	187.6	35.81	6.238				
5,800.0	5,549.2	5,774.0	5,464.9	32.0	35.8	-14.87	-453.6	1,578.5	227.1	190.2	36.85	6.162				
5,900.0	5,643.2	5,873.4	5,557.0	32.6	36.4	5.11	-449.6	1,615.3	230.8	192.5	38.32	6.023				
6,000.0	5,736.7	5,971.9	5,647.0	33.1	37.0	23.37	-432.2	1,651.3	234.8	195.2	39.53	5.940				
6,100.0	5,827.9	6,069.6	5,733.2	33.6	37.4	36.29	-402.0	1,685.6	238.8	198.4	40.38	5.914				
6,200.0	5,914.9	6,166.4	5,814.1	34.0	37.8	44.46	-359.8	1,717.9	242.7	201.9	40.83	5.944				
6,300.0	5,996.1	6,262.5	5,888.5	34.2	38.1	49.49	-306.7	1,747.5	246.5	205.6	40.91	6.025				
6,400.0	6,069.9	6,358.1	5,955.2	34.5	38.4	52.63	-243.8	1,774.1	250.0	209.3	40.70	6.144				
6,500.0	6,134.9	6,453.0	6,013.2	34.6	38.6	54.60	-172.4	1,797.2	253.2	212.9	40.31	6.280				
6,600.0	6,189.7	6,547.5	6,061.8	34.8	38.8	55.85	-93.7	1,816.5	255.9	215.9	39.94	6.406				
6,700.0	6,233.4	6,641.7	6,100.2	34.9	38.9	56.65	-9.2	1,831.7	258.0	218.3	39.78	6.486				
6,800.0	6,265.0	6,735.6	6,127.9	34.9	39.0	57.13	79.8	1,842.6	259.6	219.6	40.02	6.487				
6,900.0	6,284.0	6,829.4	6,144.6	35.0	39.0	57.42	171.7	1,849.2	260.5	219.7	40.79	6.387				
7,000.0	6,290.0	6,923.2	6,150.0	35.1	39.1	57.53	265.3	1,851.2	260.8	218.7	42.12	6.192				
7,100.0	6,290.0	7,023.2	6,150.0	35.2	39.2	57.53	365.3	1,851.0	260.8	217.4	43.36	6.015				
7,200.0	6,290.0	7,123.2	6,150.0	35.4	39.3	57.53	465.3	1,850.9	260.8	215.8	45.03	5.791				
7,300.0	6,290.0	7,223.2	6,150.0	35.6	39.5	57.53	565.3	1,850.7	260.8	213.9	46.88	5.563				
7,400.0	6,290.0	7,323.2	6,150.0	36.0	39.8	57.53	665.3	1,850.5	260.8	211.9	48.89	5.334				
7,500.0	6,290.0	7,423.2	6,150.0	36.5	40.2	57.53	765.3	1,850.4	260.8	209.8	51.04	5.109				
7,600.0	6,290.0	7,523.2	6,150.0	37.0	40.7	57.53	865.3	1,850.2	260.8	207.5	53.31	4.892				
7,700.0	6,290.0	7,623.2	6,150.0	37.7	41.2	57.53	965.3	1,850.1	260.8	205.1	55.69	4.683				
7,800.0	6,290.0	7,723.2	6,150.0	38.5	41.8	57.53	1,065.3	1,849.9	260.8	202.6	58.16	4.484				
7,900.0	6,290.0	7,823.2	6,150.0	39.4	42.6	57.53	1,165.3	1,849.8	260.8	200.1	60.72	4.295				
8,000.0	6,290.0	7,923.2	6,150.0	40.4	43.4	57.53	1,265.3	1,849.6	260.8	197.4	63.35	4.117				
8,100.0	6,290.0	8,023.2	6,150.0	41.4	44.3	57.53	1,365.3	1,849.5	260.8	194.7	66.04	3.949				
8,200.0	6,290.0	8,123.2	6,150.0	42.6	45.3	57.53	1,465.3	1,849.3	260.8	192.0	68.79	3.791				
8,300.0	6,290.0	8,223.2	6,150.0	43.8	46.4	57.53	1,565.3	1,849.2	260.8	189.2	71.59	3.643				
8,400.0	6,290.0	8,323.2	6,150.0	45.1	47.5	57.53	1,665.3	1,849.0	260.8	186.4	74.43	3.504				
8,500.0	6,290.0	8,423.2	6,150.0	46.4	48.8	57.53	1,765.3	1,848.9	260.8	183.5	77.31	3.373				
8,600.0	6,290.0	8,523.2	6,150.0	47.8	50.0	57.53	1,865.3	1,848.7	260.8	180.6	80.23	3.250				
8,700.0	6,290.0	8,623.2	6,150.0	49.3	51.4	57.53	1,965.3	1,848.5	260.8	177.6	83.18	3.135				
8,800.0	6,290.0	8,723.2	6,150.0	50.8	52.7	57.53	2,065.3	1,848.4	260.8	174.6	86.16	3.027				
8,900.0	6,290.0	8,823.2	6,150.0	52.3	54.2	57.53	2,165.3	1,848.2	260.8	171.6	89.16	2.925				
9,000.0	6,290.0	8,923.2	6,150.0	53.8	55.6	57.53	2,265.3	1,848.1	260.8	168.6	92.19	2.829				
9,100.0	6,290.0	9,023.2	6,150.0	55.4	57.1	57.53	2,365.3	1,847.9	260.8	165.6	95.23	2.738				
9,200.0	6,290.0	9,123.2	6,150.0	57.0	58.7	57.53	2,465.3	1,847.8	260.8	162.5	98.30	2.653				
9,300.0	6,290.0	9,223.2	6,150.0	58.6	60.2	57.53	2,565.3	1,847.6	260.8	159.4	101.38	2.572				
9,400.0	6,290.0	9,323.2	6,150.0	60.3	61.8	57.53	2,665.3	1,847.5	260.8	156.3	104.48	2.496				
9,500.0	6,290.0	9,423.2	6,150.0	62.0	63.4	57.53	2,765.3	1,847.3	260.8	153.2	107.59	2.424				
9,600.0	6,290.0	9,523.2	6,150.0	63.6	65.1	57.53	2,865.3	1,847.2	260.8	150.1	110.72	2.355				
9,700.0	6,290.0	9,623.2	6,150.0	65.3	66.7	57.53	2,965.3	1,847.0	260.8	146.9	113.85	2.290				
9,800.0	6,290.0	9,723.2	6,150.0	67.0	68.4	57.53	3,065.3	1,846.9	260.8	143.8	117.00	2.229				
9,900.0	6,290.0	9,823.2	6,150.0	68.8	70.0	57.53	3,165.3	1,846.7	260.8	140.6	120.16	2.170				
10,000.0	6,290.0	9,923.2	6,150.0	70.5	71.7	57.53	3,265.3	1,846.6	260.8	137.4	123.33	2.115				
10,100.0	6,290.0	10,023.2	6,150.0	72.2	73.4	57.53	3,365.3	1,846.4	260.8	134.3	126.50	2.061				
10,200.0	6,290.0	10,123.2	6,150.0	74.0	75.2	57.53	3,465.3	1,846.2	260.8	131.1	129.69	2.011				
10,300.0	6,290.0	10,223.2	6,150.0	75.8	76.9	57.53	3,565.3	1,846.1	260.8	127.9	132.88	1.962				

SRC Markham Pad Sec.16-T4N-R68W - SRC Markham C-16-9NHZ - Wellbore #1 - Plan #1 (3-31-14)												Offset Site Error:	0.0 ft
Survey Program: 0-MWD												Offset Well Error:	0.0 ft
Reference		Offset		Semi Major Axis			Distance						Warning
Measured Depth (ft)	Vertical Depth (ft)	Measured Depth (ft)	Vertical Depth (ft)	Reference (ft)	Offset (ft)	Highside Toolface (°)	Offset Wellbore Centre +N/-S (ft)	+E/-W (ft)	Between Centres (ft)	Between Ellipses (ft)	Minimum Separation (ft)	Separation Factor	
10,400.0	6,290.0	10,323.2	6,150.0	77.5	78.6	57.53	3,665.3	1,845.9	260.8	124.7	136.08	1.916	
10,500.0	6,290.0	10,423.2	6,150.0	79.3	80.4	57.53	3,765.3	1,845.8	260.8	121.5	139.28	1.872	
10,600.0	6,290.0	10,523.2	6,150.0	81.1	82.1	57.53	3,865.3	1,845.6	260.8	118.3	142.50	1.830	
10,700.0	6,290.0	10,623.2	6,150.0	82.9	83.9	57.53	3,965.3	1,845.5	260.8	115.1	145.71	1.790	
10,800.0	6,290.0	10,723.2	6,150.0	84.7	85.7	57.53	4,065.3	1,845.3	260.8	111.8	148.93	1.751	
10,900.0	6,290.0	10,823.2	6,150.0	86.5	87.5	57.53	4,165.3	1,845.2	260.8	108.6	152.16	1.714	
11,000.0	6,290.0	10,923.2	6,150.0	88.3	89.2	57.53	4,265.3	1,845.0	260.8	105.4	155.39	1.678	
11,100.0	6,290.0	11,023.2	6,150.0	90.1	91.0	57.53	4,365.3	1,844.9	260.8	102.1	158.63	1.644	
11,200.0	6,290.0	11,123.2	6,150.0	91.9	92.8	57.53	4,465.3	1,844.7	260.8	98.9	161.87	1.611	
11,300.0	6,290.0	11,223.2	6,150.0	93.7	94.6	57.53	4,565.3	1,844.6	260.8	95.7	165.11	1.579	
11,400.0	6,290.0	11,323.2	6,150.0	95.6	96.4	57.53	4,665.3	1,844.4	260.8	92.4	168.36	1.549	
11,500.0	6,290.0	11,423.2	6,150.0	97.4	98.2	57.53	4,765.3	1,844.2	260.8	89.2	171.61	1.520	
11,600.0	6,290.0	11,523.2	6,150.0	99.2	100.1	57.53	4,865.3	1,844.1	260.8	85.9	174.87	1.491 Level 3	
11,700.0	6,290.0	11,623.2	6,150.0	101.1	101.9	57.53	4,965.3	1,843.9	260.8	82.6	178.12	1.464 Level 3	
11,800.0	6,290.0	11,723.2	6,150.0	102.9	103.7	57.53	5,065.3	1,843.8	260.8	79.4	181.38	1.438 Level 3	
11,900.0	6,290.0	11,823.2	6,150.0	104.7	105.5	57.53	5,165.3	1,843.6	260.8	76.1	184.65	1.412 Level 3	
12,000.0	6,290.0	11,923.2	6,150.0	106.6	107.4	57.53	5,265.3	1,843.5	260.8	72.9	187.91	1.388 Level 3	
12,100.0	6,290.0	12,023.2	6,150.0	108.4	109.2	57.53	5,365.3	1,843.3	260.8	69.6	191.18	1.364 Level 3	
12,200.0	6,290.0	12,123.2	6,150.0	110.3	111.0	57.53	5,465.3	1,843.2	260.8	66.3	194.45	1.341 Level 3	
12,300.0	6,290.0	12,223.2	6,150.0	112.1	112.9	57.53	5,565.3	1,843.0	260.8	63.0	197.72	1.319 Level 3	
12,400.0	6,290.0	12,323.2	6,150.0	114.0	114.7	57.53	5,665.3	1,842.9	260.8	59.8	200.99	1.297 Level 3	
12,500.0	6,290.0	12,423.2	6,150.0	115.8	116.5	57.53	5,765.3	1,842.7	260.8	56.5	204.27	1.277 Level 3	
12,600.0	6,290.0	12,523.2	6,150.0	117.7	118.4	57.53	5,865.3	1,842.6	260.8	53.2	207.55	1.256 Level 3	
12,700.0	6,290.0	12,623.2	6,150.0	119.6	120.2	57.53	5,965.3	1,842.4	260.8	49.9	210.83	1.237 Level 2	
12,800.0	6,290.0	12,723.2	6,150.0	121.4	122.1	57.53	6,065.3	1,842.2	260.8	46.6	214.11	1.218 Level 2	
12,900.0	6,290.0	12,823.2	6,150.0	123.3	124.0	57.53	6,165.3	1,842.1	260.8	43.4	217.39	1.199 Level 2	
13,000.0	6,290.0	12,923.2	6,150.0	125.1	125.8	57.53	6,265.3	1,841.9	260.8	40.1	220.68	1.182 Level 2	
13,100.0	6,290.0	13,023.2	6,150.0	127.0	127.7	57.53	6,365.3	1,841.8	260.8	36.8	223.97	1.164 Level 2	
13,200.0	6,290.0	13,123.2	6,150.0	128.9	129.5	57.53	6,465.3	1,841.6	260.8	33.5	227.25	1.147 Level 2	
13,300.0	6,290.0	13,223.2	6,150.0	130.8	131.4	57.53	6,565.3	1,841.5	260.8	30.2	230.54	1.131 Level 2	
13,400.0	6,290.0	13,323.2	6,150.0	132.6	133.2	57.53	6,665.3	1,841.3	260.8	26.9	233.83	1.115 Level 2	
13,500.0	6,290.0	13,423.2	6,150.0	134.5	135.1	57.53	6,765.3	1,841.2	260.8	23.6	237.13	1.100 Level 2	
13,600.0	6,290.0	13,523.2	6,150.0	136.4	137.0	57.53	6,865.3	1,841.0	260.8	20.3	240.42	1.085 Level 2	
13,700.0	6,290.0	13,623.2	6,150.0	138.2	138.8	57.53	6,965.3	1,840.9	260.8	17.0	243.71	1.070 Level 2	
13,800.0	6,290.0	13,723.2	6,150.0	140.1	140.7	57.53	7,065.3	1,840.7	260.8	13.7	247.01	1.056 Level 2	
13,900.0	6,290.0	13,823.2	6,150.0	142.0	142.6	57.53	7,165.3	1,840.6	260.8	10.4	250.30	1.042 Level 2	
14,000.0	6,290.0	13,923.2	6,150.0	143.9	144.5	57.53	7,265.3	1,840.4	260.8	7.1	253.60	1.028 Level 2	
14,050.0	6,290.0	13,973.2	6,150.0	144.8	145.4	57.53	7,315.3	1,840.3	260.8	5.5	255.25	1.022 Level 2, ES, SF	

Offset Design												Offset Site Error:		0.0 ft
Survey Program: 0-MWD												Offset Well Error:		0.0 ft
Reference		Offset		Semi Major Axis			Distance						Warning	
Measured Depth (ft)	Vertical Depth (ft)	Measured Depth (ft)	Vertical Depth (ft)	Reference (ft)	Offset (ft)	Highside Toolface (°)	Offset Wellbore Centre +N/-S (ft)	+E/-W (ft)	Between Centres (ft)	Between Ellipses (ft)	Minimum Separation (ft)	Separation Factor		
0.0	0.0	0.0	0.0	0.0	0.0	89.55	0.4	45.2	45.2					
100.0	100.0	100.0	100.0	0.1	0.1	89.55	0.4	45.2	45.2	45.0	0.22	201.006		
200.0	200.0	200.0	200.0	0.3	0.3	89.55	0.4	45.2	45.2	44.5	0.67	67.002		
300.0	300.0	300.0	300.0	0.6	0.6	89.55	0.4	45.2	45.2	44.1	1.12	40.201		
400.0	400.0	400.0	400.0	0.8	0.8	89.55	0.4	45.2	45.2	43.6	1.57	28.715		
500.0	500.0	500.0	500.0	1.0	1.0	89.55	0.4	45.2	45.2	43.2	2.02	22.334		
600.0	600.0	600.0	600.0	1.2	1.2	89.55	0.4	45.2	45.2	42.7	2.47	18.273		
700.0	700.0	700.0	700.0	1.5	1.5	89.55	0.4	45.2	45.2	42.3	2.92	15.462		
800.0	800.0	800.0	800.0	1.7	1.7	89.55	0.4	45.2	45.2	41.8	3.37	13.400 CC, ES		
900.0	900.0	898.5	898.4	1.9	1.9	90.08	-0.1	46.8	46.8	43.0	3.80	12.321		
1,000.0	1,000.0	996.7	996.5	2.1	2.1	91.49	-1.3	51.7	51.8	47.6	4.22	12.274		
1,100.0	1,100.0	1,094.5	1,093.9	2.4	2.3	93.30	-3.4	59.8	60.2	55.6	4.66	12.923		
1,200.0	1,200.0	1,191.5	1,190.3	2.6	2.5	95.12	-6.4	71.0	72.0	66.9	5.11	14.072		
1,300.0	1,300.0	1,288.0	1,285.6	2.8	2.8	-11.76	-10.1	85.3	85.4	79.9	5.50	15.539		
1,400.0	1,399.8	1,384.0	1,380.0	3.0	3.1	-10.84	-14.6	102.6	98.8	92.9	5.90	16.753		
1,500.0	1,499.5	1,479.6	1,473.3	3.2	3.5	-10.26	-19.8	122.8	112.1	105.8	6.30	17.776		
1,600.0	1,598.7	1,574.9	1,565.4	3.4	3.9	-9.90	-25.8	146.0	125.2	118.5	6.72	18.631		
1,700.0	1,697.5	1,669.7	1,656.4	3.7	4.3	-9.70	-32.6	172.0	138.3	131.1	7.15	19.337		
1,800.0	1,795.6	1,764.1	1,746.0	4.0	4.9	-9.62	-40.1	200.7	151.1	143.5	7.59	19.900		
1,900.0	1,893.1	1,858.1	1,834.2	4.3	5.5	-9.62	-48.2	232.2	163.8	155.8	8.04	20.364		
2,000.0	1,989.6	1,951.8	1,921.0	4.7	6.1	-9.70	-57.1	266.3	176.3	167.8	8.52	20.693		
2,100.0	2,085.3	2,050.9	2,012.2	5.2	6.9	-9.89	-66.9	304.0	187.2	178.2	9.03	20.728		
2,200.0	2,179.8	2,150.6	2,103.9	5.8	7.7	-10.25	-76.7	341.9	194.7	185.1	9.57	20.347		
2,300.0	2,273.5	2,250.5	2,195.7	6.4	8.5	-10.74	-86.6	379.8	199.5	189.4	10.18	19.610		
2,400.0	2,367.1	2,350.4	2,287.6	7.0	9.3	-11.22	-96.5	417.8	204.2	193.4	10.83	18.866		
2,500.0	2,460.6	2,450.3	2,379.4	7.7	10.1	-11.68	-106.3	455.8	209.0	197.5	11.50	18.178		
2,600.0	2,554.2	2,550.1	2,471.3	8.4	10.9	-12.13	-116.2	493.7	213.7	201.5	12.18	17.541		
2,700.0	2,647.8	2,650.0	2,563.1	9.0	11.7	-12.55	-126.0	531.7	218.4	205.5	12.89	16.951		
2,800.0	2,741.4	2,749.9	2,655.0	9.7	12.5	-12.95	-135.9	569.7	223.2	209.6	13.60	16.406		
2,900.0	2,835.0	2,849.8	2,746.8	10.5	13.4	-13.34	-145.8	607.7	227.9	213.6	14.34	15.901		
3,000.0	2,928.6	2,949.6	2,838.7	11.2	14.2	-13.71	-155.6	645.6	232.7	217.6	15.08	15.433		
3,100.0	3,022.2	3,049.5	2,930.5	11.9	15.0	-14.07	-165.5	683.6	237.5	221.7	15.84	14.999		
3,200.0	3,115.8	3,149.4	3,022.3	12.6	15.9	-14.41	-175.4	721.6	242.3	225.7	16.60	14.595		
3,300.0	3,209.4	3,249.3	3,114.2	13.4	16.7	-14.74	-185.2	759.5	247.1	229.7	17.38	14.219		
3,400.0	3,303.0	3,349.1	3,206.0	14.1	17.5	-15.05	-195.1	797.5	251.9	233.7	18.16	13.868		
3,500.0	3,396.6	3,449.0	3,297.9	14.8	18.4	-15.36	-205.0	835.5	256.7	237.8	18.96	13.541		
3,600.0	3,490.2	3,548.9	3,389.7	15.6	19.2	-15.65	-214.8	873.5	261.5	241.8	19.76	13.234		
3,700.0	3,583.7	3,648.8	3,481.6	16.3	20.1	-15.94	-224.7	911.4	266.4	245.8	20.57	12.947		
3,800.0	3,677.3	3,748.6	3,573.4	17.0	20.9	-16.21	-234.6	949.4	271.2	249.8	21.39	12.678		
3,900.0	3,770.9	3,848.5	3,665.3	17.8	21.7	-16.47	-244.4	987.4	276.0	253.8	22.22	12.425		
4,000.0	3,864.5	3,948.4	3,757.1	18.5	22.6	-16.73	-254.3	1,025.3	280.9	257.8	23.05	12.187		
4,100.0	3,958.1	4,048.3	3,849.0	19.3	23.4	-16.97	-264.2	1,063.3	285.7	261.9	23.89	11.963		
4,200.0	4,051.7	4,148.1	3,940.8	20.0	24.3	-17.21	-274.0	1,101.3	290.6	265.9	24.73	11.751		
4,300.0	4,145.3	4,248.0	4,032.7	20.8	25.1	-17.44	-283.9	1,139.2	295.5	269.9	25.58	11.551		
4,400.0	4,238.9	4,347.9	4,124.5	21.5	26.0	-17.66	-293.7	1,177.2	300.3	273.9	26.43	11.362		
4,500.0	4,332.5	4,447.8	4,216.4	22.3	26.8	-17.88	-303.6	1,215.2	305.2	277.9	27.29	11.182		
4,600.0	4,426.1	4,547.6	4,308.2	23.0	27.7	-18.08	-313.5	1,253.2	310.1	281.9	28.16	11.012		
4,700.0	4,519.7	4,647.5	4,400.1	23.8	28.5	-18.29	-323.3	1,291.1	315.0	285.9	29.03	10.851		
4,800.0	4,613.2	4,747.4	4,491.9	24.5	29.4	-18.48	-333.2	1,329.1	319.8	289.9	29.90	10.697		
4,900.0	4,706.8	4,847.3	4,583.8	25.3	30.2	-18.67	-343.1	1,367.1	324.7	293.9	30.78	10.551		
5,000.0	4,800.4	4,947.1	4,675.6	26.0	31.1	-18.85	-352.9	1,405.0	329.6	298.0	31.66	10.412		
5,100.0	4,894.0	5,047.0	4,767.4	26.8	31.9	-19.03	-362.8	1,443.0	334.5	302.0	32.54	10.279		

COMPASS 2003.21 Build 46

Company:	Synergy Resources	Local Co-ordinate Reference:	Well SRC Markham C-16-9CHZ
Project:	Sec.16-T4N-R68W	TVD Reference:	WELL @ 4976.0ft (RKB - 13')
Reference Site:	SRC Markham Pad Sec.16-T4N-R68W	MD Reference:	WELL @ 4976.0ft (RKB - 13')
Site Error:	0.0ft	North Reference:	True
Reference Well:	SRC Markham C-16-9CHZ	Survey Calculation Method:	Minimum Curvature
Well Error:	0.0ft	Output errors are at	2.00 sigma
Reference Wellbore	Wellbore #1	Database:	Landmark
Reference Design:	Plan #1 (3-31-14)	Offset TVD Reference:	Offset Datum

Offset Design												Offset Site Error:	0.0 ft
Survey Program: 0-MWD												Offset Well Error:	0.0 ft
Reference		Offset		Semi Major Axis			Distance						Warning
Measured Depth (ft)	Vertical Depth (ft)	Measured Depth (ft)	Vertical Depth (ft)	Reference (ft)	Offset (ft)	Highside Toolface (°)	Offset Wellbore Centre +N/-S (ft)	+E/-W (ft)	Between Centres (ft)	Between Ellipses (ft)	Minimum Separation (ft)	Separation Factor	
5,200.0	4,987.6	5,146.9	4,859.3	27.5	32.8	-19.21	-372.7	1,481.0	339.4	306.0	33.43	10.153	
5,300.0	5,081.2	5,246.8	4,951.1	28.3	33.6	-19.38	-382.5	1,518.9	344.3	310.0	34.32	10.032	
5,400.0	5,174.8	5,346.6	5,043.0	29.0	34.4	-19.54	-392.4	1,556.9	349.2	314.0	35.22	9.916	
5,500.0	5,268.4	5,446.5	5,134.8	29.8	35.3	-19.70	-402.3	1,594.9	354.1	318.0	36.12	9.805	
5,600.0	5,362.0	5,546.4	5,226.7	30.5	36.1	-19.85	-412.1	1,632.9	359.0	322.0	37.02	9.699	
5,700.0	5,455.6	5,646.3	5,318.5	31.3	37.0	-20.00	-422.0	1,670.8	363.9	326.0	37.92	9.597	
5,800.0	5,549.2	5,746.1	5,410.4	32.0	37.8	-18.28	-431.9	1,708.8	368.8	330.0	38.84	9.497	
5,900.0	5,643.2	5,845.7	5,501.9	32.6	38.7	4.43	-441.7	1,746.6	373.4	334.3	39.14	9.540	
6,000.0	5,736.7	5,943.6	5,592.0	33.1	39.5	27.23	-450.6	1,783.9	378.1	339.7	38.42	9.840	
6,100.0	5,827.9	6,043.3	5,684.1	33.6	40.2	44.93	-449.1	1,821.9	383.9	346.3	37.63	10.204	
6,200.0	5,914.9	6,146.5	5,778.2	34.0	40.8	57.61	-432.9	1,860.8	390.9	353.8	37.11	10.535	
6,300.0	5,996.1	6,253.6	5,872.6	34.2	41.4	66.84	-400.9	1,899.7	398.8	361.9	36.90	10.808	
6,400.0	6,069.9	6,364.7	5,964.7	34.5	41.9	73.76	-352.0	1,937.7	407.1	370.1	36.95	11.017	
6,500.0	6,134.9	6,479.9	6,051.6	34.6	42.3	79.05	-285.6	1,973.6	415.4	378.2	37.19	11.170	
6,600.0	6,189.7	6,599.4	6,130.2	34.8	42.6	83.11	-201.8	2,005.9	423.2	385.7	37.55	11.270	
6,700.0	6,233.4	6,722.6	6,196.6	34.9	42.8	86.14	-101.8	2,033.2	430.0	392.0	38.05	11.303	
6,800.0	6,265.0	6,849.2	6,247.4	34.9	43.0	88.26	12.0	2,054.0	435.4	396.7	38.70	11.248	
6,900.0	6,284.0	6,978.2	6,279.2	35.0	43.1	89.54	136.2	2,066.9	438.8	399.1	39.64	11.069	
7,000.0	6,290.0	7,108.3	6,290.0	35.1	43.2	90.00	265.7	2,071.2	440.1	399.2	40.90	10.761	
7,100.0	6,290.0	7,208.4	6,290.0	35.2	43.3	90.00	365.7	2,071.0	440.1	398.0	42.05	10.467	
7,200.0	6,290.0	7,308.4	6,290.0	35.4	43.4	90.00	465.7	2,070.9	440.1	396.4	43.71	10.069	
7,300.0	6,290.0	7,408.4	6,290.0	35.6	43.6	90.00	565.7	2,070.7	440.1	394.4	45.63	9.644	
7,400.0	6,290.0	7,508.4	6,290.0	36.0	43.8	90.00	665.7	2,070.6	440.1	392.3	47.79	9.208	
7,500.0	6,290.0	7,608.4	6,290.0	36.5	44.1	90.00	765.7	2,070.4	440.0	389.9	50.15	8.775	
7,600.0	6,290.0	7,708.4	6,290.0	37.0	44.5	90.00	865.7	2,070.3	440.0	387.4	52.68	8.353	
7,700.0	6,290.0	7,808.4	6,290.0	37.7	45.0	90.00	965.7	2,070.1	440.0	384.7	55.36	7.948	
7,800.0	6,290.0	7,908.4	6,290.0	38.5	45.5	90.00	1,065.7	2,069.9	440.0	381.9	58.18	7.564	
7,900.0	6,290.0	8,008.4	6,290.0	39.4	46.2	90.00	1,165.7	2,069.8	440.0	378.9	61.10	7.201	
8,000.0	6,290.0	8,108.4	6,290.0	40.4	46.9	90.00	1,265.7	2,069.6	440.0	375.9	64.13	6.862	
8,100.0	6,290.0	8,208.4	6,290.0	41.4	47.6	90.00	1,365.7	2,069.5	440.0	372.8	67.23	6.545	
8,200.0	6,290.0	8,308.4	6,290.0	42.6	48.5	90.00	1,465.7	2,069.3	440.0	369.6	70.41	6.249	
8,300.0	6,290.0	8,408.4	6,290.0	43.8	49.5	90.00	1,565.7	2,069.2	440.0	366.4	73.65	5.974	
8,400.0	6,290.0	8,508.4	6,290.0	45.1	50.5	90.00	1,665.7	2,069.0	440.0	363.1	76.95	5.718	
8,500.0	6,290.0	8,608.4	6,290.0	46.4	51.6	90.00	1,765.7	2,068.8	440.0	359.7	80.29	5.480	
8,600.0	6,290.0	8,708.4	6,290.0	47.8	52.7	90.00	1,865.7	2,068.7	440.0	356.3	83.68	5.258	
8,700.0	6,290.0	8,808.4	6,290.0	49.3	53.9	90.00	1,965.7	2,068.5	440.0	352.9	87.11	5.051	
8,800.0	6,290.0	8,908.4	6,290.0	50.8	55.2	90.00	2,065.7	2,068.4	440.0	349.4	90.56	4.858	
8,900.0	6,290.0	9,008.4	6,290.0	52.3	56.5	90.00	2,165.7	2,068.2	440.0	345.9	94.05	4.678	
9,000.0	6,290.0	9,108.4	6,290.0	53.8	57.9	90.00	2,265.7	2,068.1	440.0	342.4	97.57	4.510	
9,100.0	6,290.0	9,208.4	6,290.0	55.4	59.3	90.00	2,365.7	2,067.9	440.0	338.9	101.11	4.352	
9,200.0	6,290.0	9,308.4	6,290.0	57.0	60.8	90.00	2,465.7	2,067.7	440.0	335.3	104.67	4.204	
9,300.0	6,290.0	9,408.4	6,290.0	58.6	62.2	90.00	2,565.7	2,067.6	440.0	331.7	108.25	4.065	
9,400.0	6,290.0	9,508.4	6,290.0	60.3	63.8	90.00	2,665.7	2,067.4	440.0	328.1	111.84	3.934	
9,500.0	6,290.0	9,608.4	6,290.0	62.0	65.3	90.00	2,765.7	2,067.3	440.0	324.5	115.45	3.811	
9,600.0	6,290.0	9,708.4	6,290.0	63.6	66.9	90.00	2,865.7	2,067.1	440.0	320.9	119.08	3.695	
9,700.0	6,290.0	9,808.4	6,290.0	65.3	68.4	90.00	2,965.7	2,067.0	440.0	317.2	122.72	3.585	
9,800.0	6,290.0	9,908.4	6,290.0	67.0	70.1	90.00	3,065.7	2,066.8	440.0	313.6	126.37	3.481	
9,900.0	6,290.0	10,008.4	6,290.0	68.8	71.7	90.00	3,165.7	2,066.6	439.9	309.9	130.03	3.383	
10,000.0	6,290.0	10,108.4	6,290.0	70.5	73.3	90.00	3,265.7	2,066.5	439.9	306.2	133.71	3.290	
10,100.0	6,290.0	10,208.4	6,290.0	72.2	75.0	90.00	3,365.7	2,066.3	439.9	302.5	137.39	3.202	
10,200.0	6,290.0	10,308.4	6,290.0	74.0	76.7	90.00	3,465.7	2,066.2	439.9	298.9	141.08	3.118	
10,300.0	6,290.0	10,408.4	6,290.0	75.8	78.4	90.00	3,565.7	2,066.0	439.9	295.2	144.78	3.039	

CC - Min centre to center distance or convergent point, SF - min separation factor, ES - min ellipse separation

Offset Design										SRC Markham Pad Sec.16-T4N-R68W - SRC Markham R-16-9-CHZ - Wellbore #1 - Plan#1 (3-31-14)			Offset Site Error:		0.0 ft
Survey Program: 0-MWD													Offset Well Error:		0.0 ft
Reference		Offset		Semi Major Axis			Distance								
Measured Depth	Vertical Depth	Measured Depth	Vertical Depth	Reference	Offset	Highside Toolface	Offset Wellbore Centre		Between Centres	Between Ellipses	Minimum Separation	Separation Factor	Warning		
(ft)	(ft)	(ft)	(ft)	(ft)	(ft)	(°)	+N/-S (ft)	+E/-W (ft)	(ft)	(ft)	(ft)				
10,400.0	6,290.0	10,508.4	6,290.0	77.5	80.1	90.00	3,665.7	2,065.9	439.9	291.4	148.48	2.963			
10,500.0	6,290.0	10,608.4	6,290.0	79.3	81.8	90.00	3,765.7	2,065.7	439.9	287.7	152.19	2.891			
10,600.0	6,290.0	10,708.4	6,290.0	81.1	83.5	90.00	3,865.7	2,065.5	439.9	284.0	155.91	2.822			
10,700.0	6,290.0	10,808.4	6,290.0	82.9	85.2	90.00	3,965.7	2,065.4	439.9	280.3	159.64	2.756			
10,800.0	6,290.0	10,908.4	6,290.0	84.7	87.0	90.00	4,065.7	2,065.2	439.9	276.5	163.37	2.693			
10,900.0	6,290.0	11,008.4	6,290.0	86.5	88.7	90.00	4,165.7	2,065.1	439.9	272.8	167.10	2.633			
11,000.0	6,290.0	11,108.4	6,290.0	88.3	90.5	90.00	4,265.7	2,064.9	439.9	269.1	170.84	2.575			
11,100.0	6,290.0	11,208.4	6,290.0	90.1	92.2	90.00	4,365.7	2,064.8	439.9	265.3	174.58	2.520			
11,200.0	6,290.0	11,308.4	6,290.0	91.9	94.0	90.00	4,465.7	2,064.6	439.9	261.6	178.33	2.467			
11,300.0	6,290.0	11,408.4	6,290.0	93.7	95.8	90.00	4,565.7	2,064.4	439.9	257.8	182.08	2.416			
11,400.0	6,290.0	11,508.4	6,290.0	95.6	97.6	90.00	4,665.7	2,064.3	439.9	254.0	185.84	2.367			
11,500.0	6,290.0	11,608.4	6,290.0	97.4	99.4	90.00	4,765.7	2,064.1	439.9	250.3	189.60	2.320			
11,600.0	6,290.0	11,708.4	6,290.0	99.2	101.2	90.00	4,865.7	2,064.0	439.9	246.5	193.36	2.275			
11,700.0	6,290.0	11,808.4	6,290.0	101.1	103.0	90.00	4,965.7	2,063.8	439.9	242.7	197.13	2.231			
11,800.0	6,290.0	11,908.4	6,290.0	102.9	104.8	90.00	5,065.7	2,063.7	439.9	239.0	200.89	2.190			
11,900.0	6,290.0	12,008.4	6,290.0	104.7	106.6	90.00	5,165.7	2,063.5	439.9	235.2	204.66	2.149			
12,000.0	6,290.0	12,108.4	6,290.0	106.6	108.4	90.00	5,265.7	2,063.3	439.9	231.4	208.44	2.110			
12,100.0	6,290.0	12,208.4	6,290.0	108.4	110.2	90.00	5,365.7	2,063.2	439.9	227.6	212.21	2.073			
12,200.0	6,290.0	12,308.4	6,290.0	110.3	112.0	90.00	5,465.7	2,063.0	439.8	223.9	215.99	2.036			
12,300.0	6,290.0	12,408.4	6,290.0	112.1	113.8	90.00	5,565.7	2,062.9	439.8	220.1	219.77	2.001			
12,400.0	6,290.0	12,508.4	6,290.0	114.0	115.7	90.00	5,665.7	2,062.7	439.8	216.3	223.55	1.967			
12,500.0	6,290.0	12,608.4	6,290.0	115.8	117.5	90.00	5,765.7	2,062.6	439.8	212.5	227.34	1.935			
12,600.0	6,290.0	12,708.4	6,290.0	117.7	119.3	90.00	5,865.7	2,062.4	439.8	208.7	231.13	1.903			
12,700.0	6,290.0	12,808.4	6,290.0	119.6	121.2	90.00	5,965.7	2,062.2	439.8	204.9	234.91	1.872			
12,800.0	6,290.0	12,908.4	6,290.0	121.4	123.0	90.00	6,065.7	2,062.1	439.8	201.1	238.70	1.843			
12,900.0	6,290.0	13,008.4	6,290.0	123.3	124.8	90.00	6,165.7	2,061.9	439.8	197.3	242.49	1.814			
13,000.0	6,290.0	13,108.4	6,290.0	125.1	126.7	90.00	6,265.7	2,061.8	439.8	193.5	246.29	1.786			
13,100.0	6,290.0	13,208.4	6,290.0	127.0	128.5	90.00	6,365.7	2,061.6	439.8	189.7	250.08	1.759			
13,200.0	6,290.0	13,308.4	6,290.0	128.9	130.4	90.00	6,465.7	2,061.5	439.8	185.9	253.88	1.732			
13,300.0	6,290.0	13,408.4	6,290.0	130.8	132.2	90.00	6,565.7	2,061.3	439.8	182.1	257.67	1.707			
13,400.0	6,290.0	13,508.4	6,290.0	132.6	134.1	90.00	6,665.7	2,061.1	439.8	178.3	261.47	1.682			
13,500.0	6,290.0	13,608.4	6,290.0	134.5	135.9	90.00	6,765.7	2,061.0	439.8	174.5	265.27	1.658			
13,600.0	6,290.0	13,708.4	6,290.0	136.4	137.8	90.00	6,865.7	2,060.8	439.8	170.7	269.07	1.634			
13,700.0	6,290.0	13,808.4	6,290.0	138.2	139.6	90.00	6,965.7	2,060.7	439.8	166.9	272.88	1.612			
13,800.0	6,290.0	13,908.4	6,290.0	140.1	141.5	90.00	7,065.7	2,060.5	439.8	163.1	276.68	1.589			
13,900.0	6,290.0	14,008.4	6,290.0	142.0	143.4	90.00	7,165.7	2,060.4	439.8	159.3	280.48	1.568			
13,966.5	6,290.0	14,074.9	6,290.0	143.3	144.6	90.00	7,232.2	2,060.2	439.8	156.8	283.01	1.554			
14,000.0	6,290.0	14,107.1	6,290.0	143.9	145.2	90.00	7,264.4	2,060.2	439.8	155.5	284.26	1.547			
14,050.0	6,290.0	14,157.1	6,290.0	144.8	146.1	90.00	7,314.4	2,060.3	439.9	153.8	286.17	1.537	SF		

Company:	Synergy Resources	Local Co-ordinate Reference:	Well SRC Markham C-16-9CHZ
Project:	Sec.16-T4N-R68W	TVD Reference:	WELL @ 4976.0ft (RKB - 13')
Reference Site:	SRC Markham Pad Sec.16-T4N-R68W	MD Reference:	WELL @ 4976.0ft (RKB - 13')
Site Error:	0.0ft	North Reference:	True
Reference Well:	SRC Markham C-16-9CHZ	Survey Calculation Method:	Minimum Curvature
Well Error:	0.0ft	Output errors are at	2.00 sigma
Reference Wellbore	Wellbore #1	Database:	Landmark
Reference Design:	Plan #1 (3-31-14)	Offset TVD Reference:	Offset Datum

Offset Design													Offset Site Error:	0.0 ft
Survey Program: 0-MWD													Offset Well Error:	0.0 ft
Reference		Offset		Semi Major Axis			Distance							Warning
Measured Depth (ft)	Vertical Depth (ft)	Measured Depth (ft)	Vertical Depth (ft)	Reference (ft)	Offset (ft)	Highside Toolface (°)	Offset Wellbore Centre +N/-S (ft)	+E/-W (ft)	Between Centres (ft)	Between Ellipses (ft)	Minimum Separation (ft)	Separation Factor		
0.0	0.0	0.0	0.0	0.0	0.0	89.38	0.7	67.5	67.5					
100.0	100.0	100.0	100.0	0.1	0.1	89.38	0.7	67.5	67.5	67.3	0.22	300.277		
200.0	200.0	200.0	200.0	0.3	0.3	89.38	0.7	67.5	67.5	66.8	0.67	100.092		
300.0	300.0	300.0	300.0	0.6	0.6	89.38	0.7	67.5	67.5	66.4	1.12	60.055		
400.0	400.0	400.0	400.0	0.8	0.8	89.38	0.7	67.5	67.5	65.9	1.57	42.897		
500.0	500.0	500.0	500.0	1.0	1.0	89.38	0.7	67.5	67.5	65.5	2.02	33.364		
600.0	600.0	600.0	600.0	1.2	1.2	89.38	0.7	67.5	67.5	65.0	2.47	27.298 CC, ES		
700.0	700.0	697.7	697.7	1.5	1.4	89.71	0.4	69.1	69.1	66.2	2.90	23.830		
800.0	800.0	795.2	795.1	1.7	1.6	90.61	-0.8	74.0	74.1	70.8	3.33	22.288		
900.0	900.0	892.3	891.8	1.9	1.9	91.87	-2.7	82.0	82.4	78.7	3.77	21.896		
1,000.0	1,000.0	988.7	987.5	2.1	2.1	93.25	-5.3	93.1	94.1	89.9	4.23	22.268		
1,100.0	1,100.0	1,084.2	1,081.9	2.4	2.4	94.59	-8.6	107.2	109.1	104.4	4.71	23.137		
1,200.0	1,200.0	1,178.6	1,174.7	2.6	2.7	95.79	-12.6	124.2	127.4	122.1	5.24	24.310		
1,300.0	1,300.0	1,272.1	1,266.0	2.8	3.1	-11.53	-17.2	143.9	147.2	141.7	5.51	26.703		
1,400.0	1,399.8	1,365.1	1,356.0	3.0	3.5	-10.88	-22.5	166.4	166.9	160.9	5.93	28.151		
1,500.0	1,499.5	1,457.5	1,444.7	3.2	3.9	-10.46	-28.4	191.5	186.4	180.0	6.35	29.332		
1,600.0	1,598.7	1,549.4	1,532.1	3.4	4.5	-10.19	-34.9	219.2	205.6	198.8	6.79	30.281		
1,700.0	1,697.5	1,640.7	1,618.0	3.7	5.1	-10.04	-42.1	249.5	224.6	217.4	7.24	31.043		
1,800.0	1,795.6	1,731.5	1,702.3	4.0	5.7	-9.98	-49.8	282.2	243.4	235.7	7.70	31.605		
1,900.0	1,893.1	1,821.9	1,785.2	4.3	6.4	-9.98	-58.0	317.3	261.9	253.7	8.18	32.006		
2,000.0	1,989.6	1,918.1	1,872.5	4.7	7.2	-10.07	-67.3	356.7	279.2	270.5	8.70	32.100		
2,100.0	2,085.3	2,017.1	1,962.2	5.2	8.1	-10.27	-76.8	397.3	293.3	284.1	9.24	31.738		
2,200.0	2,179.8	2,116.5	2,052.4	5.8	8.9	-10.59	-86.4	438.1	304.0	294.2	9.81	30.992		
2,300.0	2,273.5	2,216.1	2,142.7	6.4	9.8	-11.00	-96.0	479.0	312.1	301.6	10.44	29.887		
2,400.0	2,367.1	2,315.8	2,233.1	7.0	10.7	-11.40	-105.6	519.9	320.0	308.9	11.11	28.795		
2,500.0	2,460.6	2,415.5	2,323.5	7.7	11.6	-11.79	-115.2	560.8	328.0	316.2	11.80	27.788		
2,600.0	2,554.2	2,515.1	2,413.9	8.4	12.5	-12.15	-124.9	601.7	335.9	323.4	12.51	26.860		
2,700.0	2,647.8	2,614.8	2,504.2	9.0	13.4	-12.50	-134.5	642.6	343.9	330.7	13.23	26.004		
2,800.0	2,741.4	2,714.4	2,594.6	9.7	14.3	-12.84	-144.1	683.5	351.9	338.0	13.96	25.215		
2,900.0	2,835.0	2,814.1	2,685.0	10.5	15.2	-13.16	-153.7	724.4	359.9	345.2	14.70	24.485		
3,000.0	2,928.6	2,913.8	2,775.4	11.2	16.1	-13.46	-163.3	765.2	367.9	352.5	15.45	23.809		
3,100.0	3,022.2	3,013.4	2,865.7	11.9	17.0	-13.76	-172.9	806.1	376.0	359.7	16.22	23.184		
3,200.0	3,115.8	3,113.1	2,956.1	12.6	17.9	-14.04	-182.6	847.0	384.0	367.0	16.99	22.602		
3,300.0	3,209.4	3,212.7	3,046.5	13.4	18.8	-14.30	-192.2	887.9	392.0	374.3	17.77	22.062		
3,400.0	3,303.0	3,312.4	3,136.8	14.1	19.7	-14.56	-201.8	928.8	400.1	381.5	18.56	21.558		
3,500.0	3,396.6	3,412.1	3,227.2	14.8	20.7	-14.81	-211.4	969.7	408.1	388.8	19.35	21.088		
3,600.0	3,490.2	3,511.7	3,317.6	15.6	21.6	-15.05	-221.0	1,010.6	416.2	396.1	20.16	20.649		
3,700.0	3,583.7	3,611.4	3,408.0	16.3	22.5	-15.28	-230.6	1,051.5	424.3	403.3	20.97	20.237		
3,800.0	3,677.3	3,711.0	3,498.3	17.0	23.4	-15.50	-240.2	1,092.4	432.4	410.6	21.78	19.851		
3,900.0	3,770.9	3,810.7	3,588.7	17.8	24.3	-15.71	-249.9	1,133.3	440.5	417.9	22.60	19.488		
4,000.0	3,864.5	3,910.3	3,679.1	18.5	25.2	-15.92	-259.5	1,174.2	448.5	425.1	23.43	19.147		
4,100.0	3,958.1	4,010.0	3,769.5	19.3	26.1	-16.11	-269.1	1,215.1	456.6	432.4	24.26	18.825		
4,200.0	4,051.7	4,109.7	3,859.8	20.0	27.0	-16.30	-278.7	1,255.9	464.8	439.7	25.09	18.522		
4,300.0	4,145.3	4,209.3	3,950.2	20.8	28.0	-16.49	-288.3	1,296.8	472.9	446.9	25.93	18.234		
4,400.0	4,238.9	4,309.0	4,040.6	21.5	28.9	-16.67	-297.9	1,337.7	481.0	454.2	26.78	17.963		
4,500.0	4,332.5	4,408.6	4,131.0	22.3	29.8	-16.84	-307.5	1,378.6	489.1	461.5	27.62	17.705		
4,600.0	4,426.1	4,508.3	4,221.3	23.0	30.7	-17.00	-317.2	1,419.5	497.2	468.7	28.48	17.461		
4,700.0	4,519.7	4,608.0	4,311.7	23.8	31.6	-17.16	-326.8	1,460.4	505.3	476.0	29.33	17.229		
4,800.0	4,613.2	4,707.6	4,402.1	24.5	32.5	-17.32	-336.4	1,501.3	513.5	483.3	30.19	17.009		
4,900.0	4,706.8	4,807.3	4,492.5	25.3	33.5	-17.47	-346.0	1,542.2	521.6	490.5	31.05	16.799		
5,000.0	4,800.4	4,906.9	4,582.8	26.0	34.4	-17.62	-355.6	1,583.1	529.7	497.8	31.91	16.598		
5,100.0	4,894.0	5,006.6	4,673.2	26.8	35.3	-17.76	-365.2	1,624.0	537.9	505.1	32.78	16.407		

CC - Min centre to center distance or convergent point, SF - min separation factor, ES - min ellipse separation

Company:	Synergy Resources	Local Co-ordinate Reference:	Well SRC Markham C-16-9CHZ
Project:	Sec.16-T4N-R68W	TVD Reference:	WELL @ 4976.0ft (RKB - 13')
Reference Site:	SRC Markham Pad Sec.16-T4N-R68W	MD Reference:	WELL @ 4976.0ft (RKB - 13')
Site Error:	0.0ft	North Reference:	True
Reference Well:	SRC Markham C-16-9CHZ	Survey Calculation Method:	Minimum Curvature
Well Error:	0.0ft	Output errors are at	2.00 sigma
Reference Wellbore	Wellbore #1	Database:	Landmark
Reference Design:	Plan #1 (3-31-14)	Offset TVD Reference:	Offset Datum

Offset Design												Offset Site Error:	0.0 ft
Survey Program: 0-MWD												Offset Well Error:	0.0 ft
Reference		Offset		Semi Major Axis			Distance						Warning
Measured Depth (ft)	Vertical Depth (ft)	Measured Depth (ft)	Vertical Depth (ft)	Reference (ft)	Offset (ft)	Highside Toolface (°)	Offset Wellbore Centre +N/-S (ft)	+E/-W (ft)	Between Centres (ft)	Between Ellipses (ft)	Minimum Separation (ft)	Separation Factor	
5,200.0	4,987.6	5,106.3	4,763.6	27.5	36.2	-17.90	-374.8	1,664.9	546.0	512.4	33.65	16.225	
5,300.0	5,081.2	5,205.9	4,854.0	28.3	37.1	-18.03	-384.5	1,705.8	554.2	519.6	34.53	16.051	
5,400.0	5,174.8	5,305.6	4,944.3	29.0	38.0	-18.16	-394.1	1,746.6	562.3	526.9	35.40	15.884	
5,500.0	5,268.4	5,405.2	5,034.7	29.8	39.0	-18.29	-403.7	1,787.5	570.5	534.2	36.28	15.724	
5,600.0	5,362.0	5,504.9	5,125.1	30.5	39.9	-18.41	-413.3	1,828.4	578.6	541.5	37.16	15.571	
5,700.0	5,455.6	5,604.6	5,215.4	31.3	40.8	-18.53	-422.9	1,869.3	586.8	548.7	38.04	15.425	
5,800.0	5,549.2	5,704.2	5,305.8	32.0	41.7	-16.81	-432.5	1,910.2	594.9	556.0	38.95	15.273	
5,900.0	5,643.2	5,803.6	5,395.9	32.6	42.6	5.19	-442.1	1,951.0	602.9	563.3	39.64	15.209	
6,000.0	5,736.7	5,901.5	5,484.9	33.1	43.4	26.42	-449.4	1,991.2	610.9	571.3	39.64	15.414	
6,100.0	5,827.9	6,001.4	5,575.7	33.6	44.2	42.28	-444.3	2,032.3	619.3	579.9	39.46	15.694	
6,200.0	5,914.9	6,104.3	5,667.7	34.0	44.9	53.21	-424.6	2,073.9	628.0	588.7	39.28	15.990	
6,300.0	5,996.1	6,210.4	5,758.8	34.2	45.5	60.79	-389.4	2,115.0	636.7	597.6	39.15	16.263	
6,400.0	6,069.9	6,319.9	5,846.7	34.5	46.0	66.22	-338.0	2,154.7	645.2	606.0	39.16	16.477	
6,500.0	6,134.9	6,432.7	5,928.9	34.6	46.4	70.20	-270.3	2,191.8	653.1	613.7	39.34	16.600	
6,600.0	6,189.7	6,548.9	6,002.3	34.8	46.8	73.15	-186.7	2,224.9	660.2	620.4	39.74	16.611	
6,700.0	6,233.4	6,668.2	6,063.9	34.9	47.1	75.30	-88.5	2,252.6	666.1	625.7	40.39	16.491	
6,800.0	6,265.0	6,790.1	6,110.6	34.9	47.3	76.79	21.9	2,273.5	670.6	629.3	41.30	16.237	
6,900.0	6,284.0	6,913.9	6,139.9	35.0	47.4	77.69	141.4	2,286.6	673.5	631.0	42.49	15.849	
7,000.0	6,290.0	7,038.9	6,150.0	35.1	47.5	78.02	265.7	2,290.9	674.5	630.6	43.95	15.348	
7,100.0	6,290.0	7,139.1	6,150.0	35.2	47.5	78.02	366.0	2,290.8	674.5	629.4	45.07	14.966	
7,200.0	6,290.0	7,239.1	6,150.0	35.4	47.6	78.02	466.0	2,290.6	674.5	627.8	46.74	14.431	
7,300.0	6,290.0	7,339.1	6,150.0	35.6	47.8	78.02	566.0	2,290.5	674.5	625.9	48.65	13.866	
7,400.0	6,290.0	7,439.1	6,150.0	36.0	48.0	78.02	666.0	2,290.3	674.5	623.8	50.76	13.288	
7,500.0	6,290.0	7,539.1	6,150.0	36.5	48.3	78.02	766.0	2,290.2	674.5	621.5	53.06	12.713	
7,600.0	6,290.0	7,639.1	6,150.0	37.0	48.6	78.02	866.0	2,290.0	674.5	619.0	55.52	12.149	
7,700.0	6,290.0	7,739.1	6,150.0	37.7	49.0	78.02	966.0	2,289.9	674.5	616.4	58.12	11.606	
7,800.0	6,290.0	7,839.1	6,150.0	38.5	49.4	78.02	1,066.0	2,289.7	674.5	613.7	60.84	11.087	
7,900.0	6,290.0	7,939.1	6,150.0	39.4	49.9	78.02	1,166.0	2,289.6	674.5	610.9	63.67	10.594	
8,000.0	6,290.0	8,039.1	6,150.0	40.4	50.5	78.02	1,266.0	2,289.4	674.5	607.9	66.59	10.129	
8,100.0	6,290.0	8,139.1	6,150.0	41.4	51.2	78.02	1,366.0	2,289.3	674.5	604.9	69.60	9.692	
8,200.0	6,290.0	8,239.1	6,150.0	42.6	51.9	78.02	1,466.0	2,289.1	674.5	601.9	72.67	9.282	
8,300.0	6,290.0	8,339.1	6,150.0	43.8	52.7	78.02	1,566.0	2,289.0	674.5	598.7	75.81	8.897	
8,400.0	6,290.0	8,439.1	6,150.0	45.1	53.6	78.02	1,666.0	2,288.8	674.5	595.5	79.01	8.538	
8,500.0	6,290.0	8,539.1	6,150.0	46.4	54.6	78.02	1,766.0	2,288.7	674.5	592.3	82.25	8.201	
8,600.0	6,290.0	8,639.1	6,150.0	47.8	55.6	78.02	1,866.0	2,288.5	674.5	589.0	85.53	7.886	
8,700.0	6,290.0	8,739.1	6,150.0	49.3	56.7	78.02	1,966.0	2,288.4	674.5	585.7	88.86	7.591	
8,800.0	6,290.0	8,839.1	6,150.0	50.8	57.8	78.02	2,066.0	2,288.2	674.5	582.3	92.21	7.315	
8,900.0	6,290.0	8,939.1	6,150.0	52.3	59.0	78.02	2,166.0	2,288.1	674.5	578.9	95.60	7.056	
9,000.0	6,290.0	9,039.1	6,150.0	53.8	60.3	78.02	2,266.0	2,287.9	674.5	575.5	99.02	6.812	
9,100.0	6,290.0	9,139.1	6,150.0	55.4	61.6	78.02	2,366.0	2,287.8	674.5	572.1	102.46	6.583	
9,200.0	6,290.0	9,239.1	6,150.0	57.0	62.9	78.02	2,466.0	2,287.6	674.5	568.6	105.92	6.368	
9,300.0	6,290.0	9,339.1	6,150.0	58.6	64.3	78.02	2,566.0	2,287.5	674.6	565.1	109.41	6.165	
9,400.0	6,290.0	9,439.1	6,150.0	60.3	65.7	78.02	2,666.0	2,287.3	674.6	561.6	112.91	5.974	
9,500.0	6,290.0	9,539.1	6,150.0	62.0	67.2	78.02	2,766.0	2,287.2	674.6	558.1	116.43	5.794	
9,600.0	6,290.0	9,639.1	6,150.0	63.6	68.6	78.02	2,866.0	2,287.0	674.6	554.6	119.96	5.623	
9,700.0	6,290.0	9,739.1	6,150.0	65.3	70.2	78.02	2,966.0	2,286.9	674.6	551.0	123.51	5.461	
9,800.0	6,290.0	9,839.1	6,150.0	67.0	71.7	78.02	3,066.0	2,286.7	674.6	547.5	127.07	5.308	
9,900.0	6,290.0	9,939.1	6,150.0	68.8	73.3	78.02	3,166.0	2,286.6	674.6	543.9	130.65	5.163	
10,000.0	6,290.0	10,039.1	6,150.0	70.5	74.8	78.02	3,266.0	2,286.4	674.6	540.3	134.23	5.025	
10,100.0	6,290.0	10,139.1	6,150.0	72.2	76.4	78.02	3,366.0	2,286.3	674.6	536.7	137.82	4.894	
10,200.0	6,290.0	10,239.1	6,150.0	74.0	78.1	78.02	3,466.0	2,286.1	674.6	533.1	141.43	4.770	
10,300.0	6,290.0	10,339.1	6,150.0	75.8	79.7	78.02	3,566.0	2,286.0	674.6	529.5	145.04	4.651	

CC - Min centre to center distance or convergent point, SF - min separation factor, ES - min ellipse separation

SRC Markham Pad Sec.16-T4N-R68W - SRC Markham R-16-9NHZ - Wellbore #1 - Plan #1 (3-31-14)											Offset Site Error: 0.0 ft		
Survey Program: 0-MWD											Offset Well Error: 0.0 ft		
Reference		Offset		Semi Major Axis			Distance						
Measured Depth	Vertical Depth	Measured Depth	Vertical Depth	Reference	Offset	Highside Toolface	Offset Wellbore Centre		Between Centres	Between Ellipses	Minimum Separation	Separation Factor	Warning
(ft)	(ft)	(ft)	(ft)	(ft)	(ft)	(°)	+N/-S (ft)	+E/-W (ft)	(ft)	(ft)	(ft)		
10,400.0	6,290.0	10,439.1	6,150.0	77.5	81.4	78.02	3,666.0	2,285.8	674.6	525.9	148.66	4.538	
10,500.0	6,290.0	10,539.1	6,150.0	79.3	83.0	78.02	3,766.0	2,285.7	674.6	522.3	152.28	4.430	
10,600.0	6,290.0	10,639.1	6,150.0	81.1	84.7	78.02	3,866.0	2,285.5	674.6	518.7	155.92	4.327	
10,700.0	6,290.0	10,739.1	6,150.0	82.9	86.4	78.02	3,966.0	2,285.4	674.6	515.0	159.55	4.228	
10,800.0	6,290.0	10,839.1	6,150.0	84.7	88.1	78.02	4,066.0	2,285.2	674.6	511.4	163.20	4.133	
10,900.0	6,290.0	10,939.1	6,150.0	86.5	89.8	78.02	4,166.0	2,285.1	674.6	507.7	166.85	4.043	
11,000.0	6,290.0	11,039.1	6,150.0	88.3	91.5	78.02	4,266.0	2,284.9	674.6	504.1	170.51	3.956	
11,100.0	6,290.0	11,139.1	6,150.0	90.1	93.3	78.02	4,366.0	2,284.7	674.6	500.4	174.17	3.873	
11,200.0	6,290.0	11,239.1	6,150.0	91.9	95.0	78.02	4,466.0	2,284.6	674.6	496.7	177.83	3.793	
11,300.0	6,290.0	11,339.1	6,150.0	93.7	96.8	78.02	4,566.0	2,284.4	674.6	493.1	181.50	3.717	
11,400.0	6,290.0	11,439.1	6,150.0	95.6	98.5	78.02	4,666.0	2,284.3	674.6	489.4	185.18	3.643	
11,500.0	6,290.0	11,539.1	6,150.0	97.4	100.3	78.02	4,766.0	2,284.1	674.6	485.7	188.86	3.572	
11,600.0	6,290.0	11,639.1	6,150.0	99.2	102.1	78.02	4,866.0	2,284.0	674.6	482.0	192.54	3.504	
11,700.0	6,290.0	11,739.1	6,150.0	101.1	103.8	78.02	4,966.0	2,283.8	674.6	478.4	196.22	3.438	
11,800.0	6,290.0	11,839.1	6,150.0	102.9	105.6	78.02	5,066.0	2,283.7	674.6	474.7	199.91	3.374	
11,900.0	6,290.0	11,939.1	6,150.0	104.7	107.4	78.02	5,166.0	2,283.5	674.6	471.0	203.60	3.313	
12,000.0	6,290.0	12,039.1	6,150.0	106.6	109.2	78.02	5,266.0	2,283.4	674.6	467.3	207.30	3.254	
12,100.0	6,290.0	12,139.1	6,150.0	108.4	111.0	78.02	5,366.0	2,283.2	674.6	463.6	210.99	3.197	
12,200.0	6,290.0	12,239.1	6,150.0	110.3	112.8	78.02	5,466.0	2,283.1	674.6	459.9	214.69	3.142	
12,300.0	6,290.0	12,339.1	6,150.0	112.1	114.6	78.02	5,566.0	2,282.9	674.6	456.2	218.39	3.089	
12,400.0	6,290.0	12,439.1	6,150.0	114.0	116.4	78.02	5,666.0	2,282.8	674.6	452.5	222.10	3.037	
12,500.0	6,290.0	12,539.1	6,150.0	115.8	118.2	78.02	5,766.0	2,282.6	674.6	448.8	225.80	2.988	
12,600.0	6,290.0	12,639.1	6,150.0	117.7	120.0	78.02	5,866.0	2,282.5	674.6	445.1	229.51	2.939	
12,700.0	6,290.0	12,739.1	6,150.0	119.6	121.9	78.02	5,966.0	2,282.3	674.6	441.4	233.22	2.893	
12,800.0	6,290.0	12,839.1	6,150.0	121.4	123.7	78.02	6,066.0	2,282.2	674.6	437.7	236.93	2.847	
12,900.0	6,290.0	12,939.1	6,150.0	123.3	125.5	78.02	6,166.0	2,282.0	674.6	434.0	240.65	2.803	
13,000.0	6,290.0	13,039.1	6,150.0	125.1	127.3	78.02	6,266.0	2,281.9	674.6	430.2	244.36	2.761	
13,100.0	6,290.0	13,139.1	6,150.0	127.0	129.2	78.02	6,366.0	2,281.7	674.6	426.5	248.08	2.719	
13,200.0	6,290.0	13,239.1	6,150.0	128.9	131.0	78.02	6,466.0	2,281.6	674.6	422.8	251.80	2.679	
13,300.0	6,290.0	13,339.1	6,150.0	130.8	132.9	78.02	6,566.0	2,281.4	674.6	419.1	255.52	2.640	
13,400.0	6,290.0	13,439.1	6,150.0	132.6	134.7	78.02	6,666.0	2,281.3	674.6	415.4	259.24	2.602	
13,500.0	6,290.0	13,539.1	6,150.0	134.5	136.5	78.02	6,766.0	2,281.1	674.6	411.7	262.96	2.565	
13,600.0	6,290.0	13,639.1	6,150.0	136.4	138.4	78.02	6,866.0	2,281.0	674.6	407.9	266.69	2.530	
13,700.0	6,290.0	13,739.1	6,150.0	138.2	140.2	78.02	6,966.0	2,280.8	674.6	404.2	270.41	2.495	
13,800.0	6,290.0	13,839.1	6,150.0	140.1	142.1	78.02	7,066.0	2,280.7	674.6	400.5	274.14	2.461	
13,900.0	6,290.0	13,939.1	6,150.0	142.0	143.9	78.02	7,166.0	2,280.5	674.6	396.8	277.87	2.428	
14,000.0	6,290.0	14,039.1	6,150.0	143.9	145.8	78.02	7,266.0	2,280.4	674.6	393.0	281.60	2.396	
14,050.0	6,290.0	14,089.2	6,150.0	144.8	146.7	78.02	7,316.0	2,280.3	674.6	391.2	283.46	2.380 SF	

Reference Depths are relative to WELL @ 4976.0ft (RKB - 13')	Coordinates are relative to: SRC Markham C-16-9CHZ
Offset Depths are relative to Offset Datum	Coordinate System is US State Plane 1983, Colorado Northern Zone
Central Meridian is -105.500000 °	Grid Convergence at Surface is: 0.32°



Company: Synergy Resources
Project: Sec.16-T4N-R68W
Reference Site: SRC Markham Pad Sec.16-T4N-R68W
Site Error: 0.0ft
Reference Well: SRC Markham C-16-9CHZ
Well Error: 0.0ft
Reference Wellbore: Wellbore #1
Reference Design: Plan #1 (3-31-14)

Local Co-ordinate Reference: Well SRC Markham C-16-9CHZ
TVD Reference: WELL @ 4976.0ft (RKB - 13')
MD Reference: WELL @ 4976.0ft (RKB - 13')
North Reference: True
Survey Calculation Method: Minimum Curvature
Output errors are at 2.00 sigma
Database: Landmark
Offset TVD Reference: Offset Datum

Reference Depths are relative to WELL @ 4976.0ft (RKB - 13')

Offset Depths are relative to Offset Datum

Central Meridian is -105.500000 °

Coordinates are relative to: SRC Markham C-16-9CHZ

Coordinate System is US State Plane 1983, Colorado Northern Zone

Grid Convergence at Surface is: 0.32°

