



April 23, 2014

State Board of Land Commissioners  
North Central District Office  
Attn: Steve Freese  
360 Oak Avenue, Suite 110  
Eaton, Colorado 80615

Re: Request to access State land  
State #1 Well, 8N-60W-36: NENE  
API# 05-123-05476

Dear Mr. Freese,

Carrizo (Niobrara), LLC ("Carrizo") would like to request permission to use the surface location of the State #1 ("Well") in order locate and plug said well.

Carrizo intends to re-enter and re-plug the well, in accordance with the DJ Basin Horizontal Offset Policy, as set forth by the Colorado Oil and Gas Conservation Commission ("COGCC"). A bond in the amount of Ten Thousand Dollars (\$10,000.00) has been obtained and a Temporary Access Permit Application has been included in this request. Prior to plugging the Well, all old equipment will be removed. A 100' x 100' area surrounding the possible location of the Well, as represented on the attached plat, will be designated as the disturbance area. Once the Well is located a 150' x 150' pad will be designated as the pad location for plugging operations. The following procedures will be used to reclaim the location following completion of operations:

- Land will be re-contoured and stabilized to support vegetation, reduce erosion, and establish "bowls" in the general shape and vicinity as those pre-existing, documented by survey and photographs.
- In areas where topsoil was stockpiled the topsoil will be distributed evenly over the entire disturbed area.
- The seedbed will be prepared by disking to a depth of four (4) to six (6) inches, where feasible, following the contour. If the surface is not overly compacted it will not be ripped to hold seed.
- All disturbed areas will be seeded with a seed mixture representative of the surrounding vegetation, or a mixture specified by the surface owner.
- Seeds will be planted prior to ground frost or seed will be planted after the last frost in spring and before dry summer conditions. Seed will be planted to a depth of 0.5 inch. Stabilization using straw crimp or other approved method will be used to stabilize the seedbed to prevent soil loss. Certified seed will be used with a minimum germination rate of 80% and a purity of 90%.
- Prior to final reclamation, a joint inspection of the disturbed area will be held with the surface owner and operator.

Enclosed please find the well location plat for the State #1 well located in Section 36, 8N-60W. Please let us know if you would like to set up a consult to view the pad site. Should you find the location satisfactory, please sign and return the attached acknowledgement. If you have any questions, please do not hesitate to call or email me.

Sincerely,  
Phillip W. Corey



Sr. Landman  
500 Dallas, Suite 2300  
Houston, TX 77002  
(713) 358-6480  
Phillip.Corey@crzo.net

**I hereby acknowledge receipt of the surveyed plats for the State #1 well in Section 36, 8N-60W. I find the location to be satisfactory and approve of the well to be plugged.**

Steve Freese

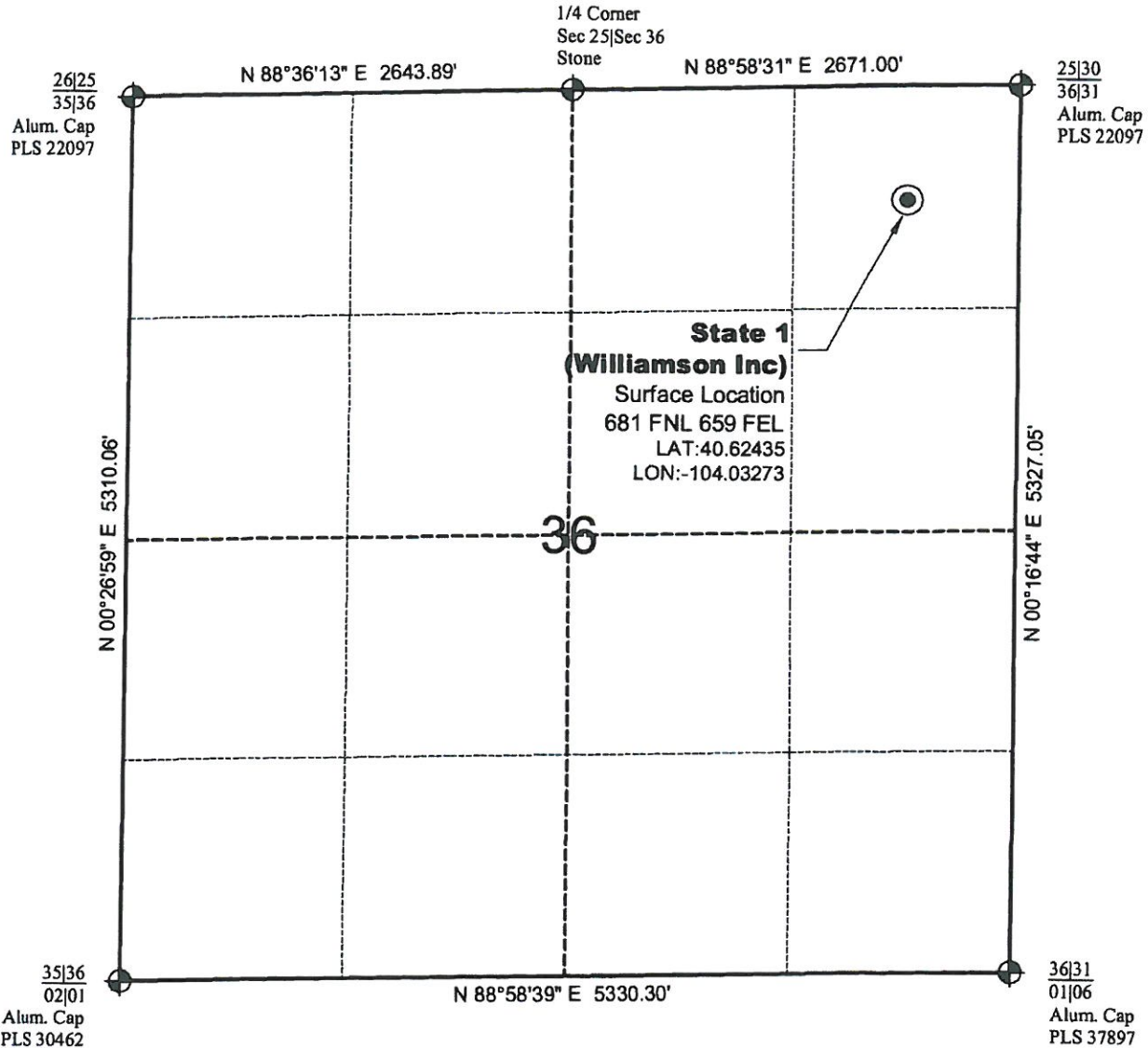
By: \_\_\_\_\_

A handwritten signature in blue ink, appearing to read "Steve Freese", written over a horizontal line.

Date: \_\_\_\_\_

4/24/14

# PLUGGED & ABANDONED WELL EXHIBIT

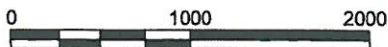


## NOTE

Location based on a signal detected during a sweep  
of the area with a metal detector on 4/22/2014.



North



Graphic Scale in Feet  
1" = 1000'



LAND SURVEYING AND MAPPING  
LAFAYETTE - WINTER PARK  
Ph 303 666 0379 Fx 303 665 6320

**STATE 1 (WILLIAMSON INC)**

**NE1/4 NE1/4 SECTION 36 T8N R60W  
6th PM WELD COUNTY COLORADO**