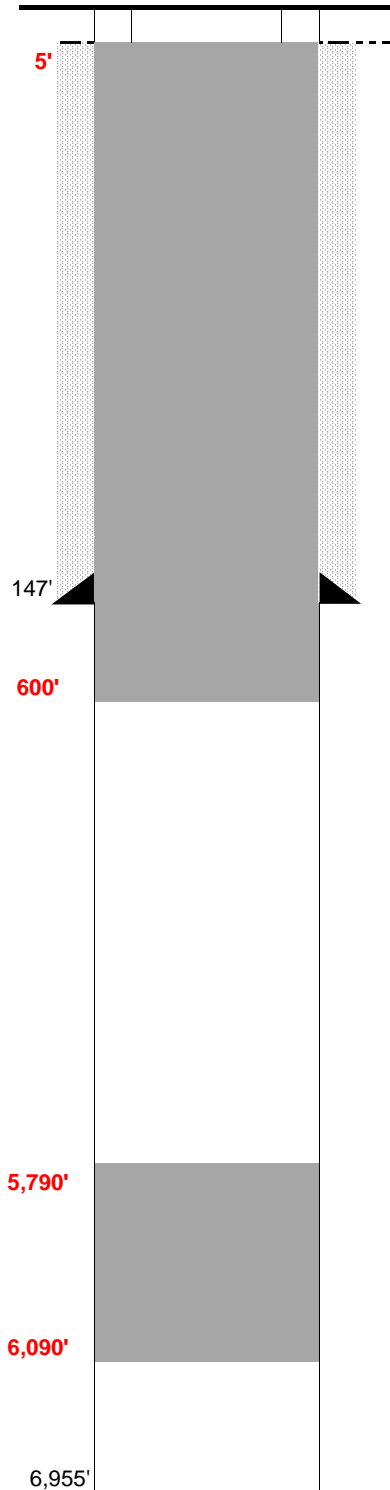


WELL NAME: State #1
OPERATOR: Lowell J. Williamson
COMP ZONE: J Sand
LOCATION: 8N 60W S36 NE NE

COUNTY: Weld
STATE: Colorado
API : 05-123-05476

SPUD: 10/21/55
P&A: 11/7/55
GL: 4,928'



SURFACE CASING

DEPTH: 147' SIZE: 9.625" GRADE: _____ WT (#/ft): 36.0
CEMENT: 180 sx
COMMENTS: _____

PRODUCTION CASING

DEPTH: _____ SIZE: _____ GRADE: _____ WT (#/ft): _____
CEMENT: _____ TOC: _____
COMMENTS: _____

PERFS: _____ - _____ PROD ZONE 1: _____
PERFS: _____ - _____ ZONE 2: _____
PERFS: _____ - _____ ZONE 3: _____

PREVIOUS PLUGS

RECOVERED: _____ SIZE: _____
CMT 1: 147' - 106' COMMENT: 15 sx Cement w/wooden plug
CMT 2: 40' - 0' COMMENT: 10 sx Cement w/wooden plug
CMT 3: _____ - _____ COMMENT: _____

PROPOSED: Plug #1: 300' cement plug from 6,090' to 5,790' (300' at top of Niobrara)
Plug #2: Cement plug from 600' to surface to isolate FW sands

FORMATIONS:

NIOBARA: 6,090'
FORT HAYS 6,326'
CARLILE 6,387'
D SAND 6,308'
D SILT _____
J SAND 6,890'