

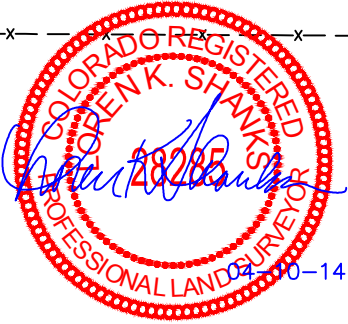
BILL BARRETT CORPORATION

LOCATION DRAWING FOR

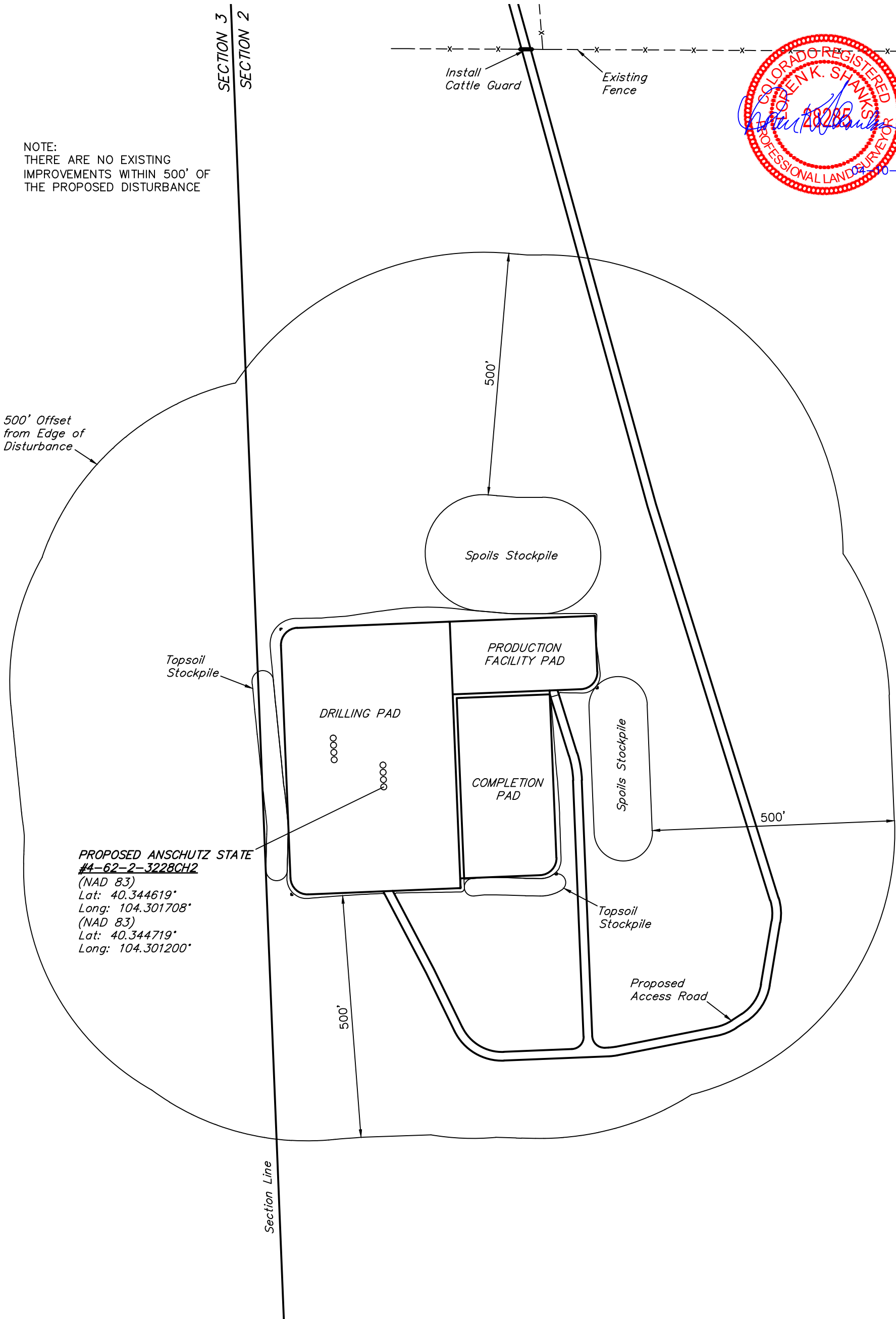
ANSCHUTZ STATE #4-62-2-3228CH2, 3228BH2, 1721CH2, 1721BH2,
1612CH2, 1612BH2, 0105CH2 & 0105BH2
SECTION 2, T4N, R62W, 6th P.M.
SW 1/4 NW 1/4

FIGURE #5

SCALE: 1" = 200'
DATE SURVEYED: 12-02-13
SURVEYED BY: DALLAS NIELSEN
DATE DRAWN: 12-20-13
DRAWN BY: J.W.
REVISED: 01-06-14
REVISED: 02-01-14
REVISED: 04-03-14 J.S.



NOTE:
THERE ARE NO EXISTING
IMPROVEMENTS WITHIN 500' OF
THE PROPOSED DISTURBANCE



PROPOSED ANSCHUTZ STATE
#4-62-2-3228CH2
(NAD 83)
Lat: 40.344619°
Long: 104.301708°
(NAD 83)
Lat: 40.344719°
Long: 104.301200°