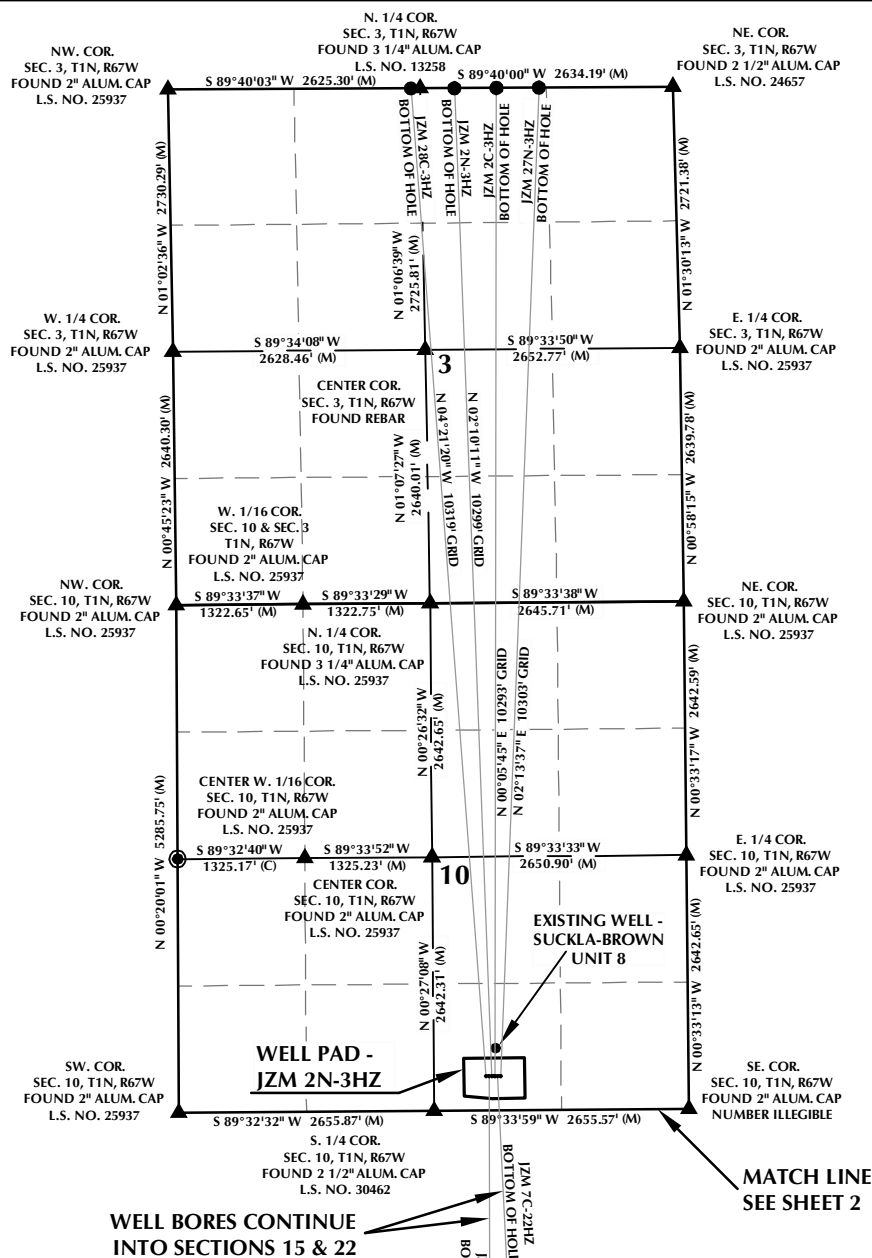


JZM 2N-3HZ T1N, R67W



WELL NOTES:

JZM 28C-3HZ
SURFACE: 355' FSL, 2109' FEL
BOTTOM HOLE: 1' FNL, 2530' FWL

JZM 25N-22HZ
SURFACE: 355' FSL, 2079' FEL
BOTTOM HOLE: 2632' FNL, 2135' FEL

JZM 2N-3HZ
SURFACE: 355' FSL, 2049' FEL
BOTTOM HOLE: 1' FNL, 2275' FEL

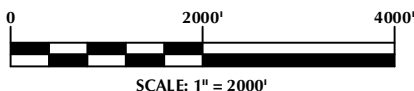
JZM 2C-3HZ
SURFACE: 355' FSL, 2019' FEL
BOTTOM HOLE: 1' FNL, 1838' FEL

JZM 7C-22HZ
SURFACE: 355' FSL, 1989' FEL
BOTTOM HOLE: 2632' FNL, 1665' FEL

JZM 27N-3HZ
SURFACE: 355' FSL, 1959' FEL
BOTTOM HOLE: 1' FNL, 1395' FEL

NOTES:

- ▲ INDICATES FOUND SECTION CORNER
- INDICATES CALCULATED CORNER
- BASIS OF BEARING DERIVED FROM COLORADO COORDINATE SYSTEM 1983 NORTH ZONE UNLESS OTHERWISE NOTED.
- ALL MEASURED DISTANCES ARE GRID.
- COMBINED SCALE FACTOR: .99972303
- WELL FOOTAGES ARE MEASURED AT RIGHT ANGLES TO THE SECTION LINES.



WELL PAD - JZM 2N-3HZ

INTERFERENCE DIAGRAM
JZM 28C-3HZ, JZM 25N-22HZ,
JZM 2N-3HZ, JZM 2C-3HZ,
JZM 7C-22HZ & JZM 27N-3HZ
LOCATED IN SECTIONS 3, 10, 15 & 22
T1N, R67W, 6TH P.M.
WELD COUNTY, COLORADO

**Kerr-McGee Oil &
Gas Onshore L.P.**
1099 18th Street
Denver, Colorado 80202



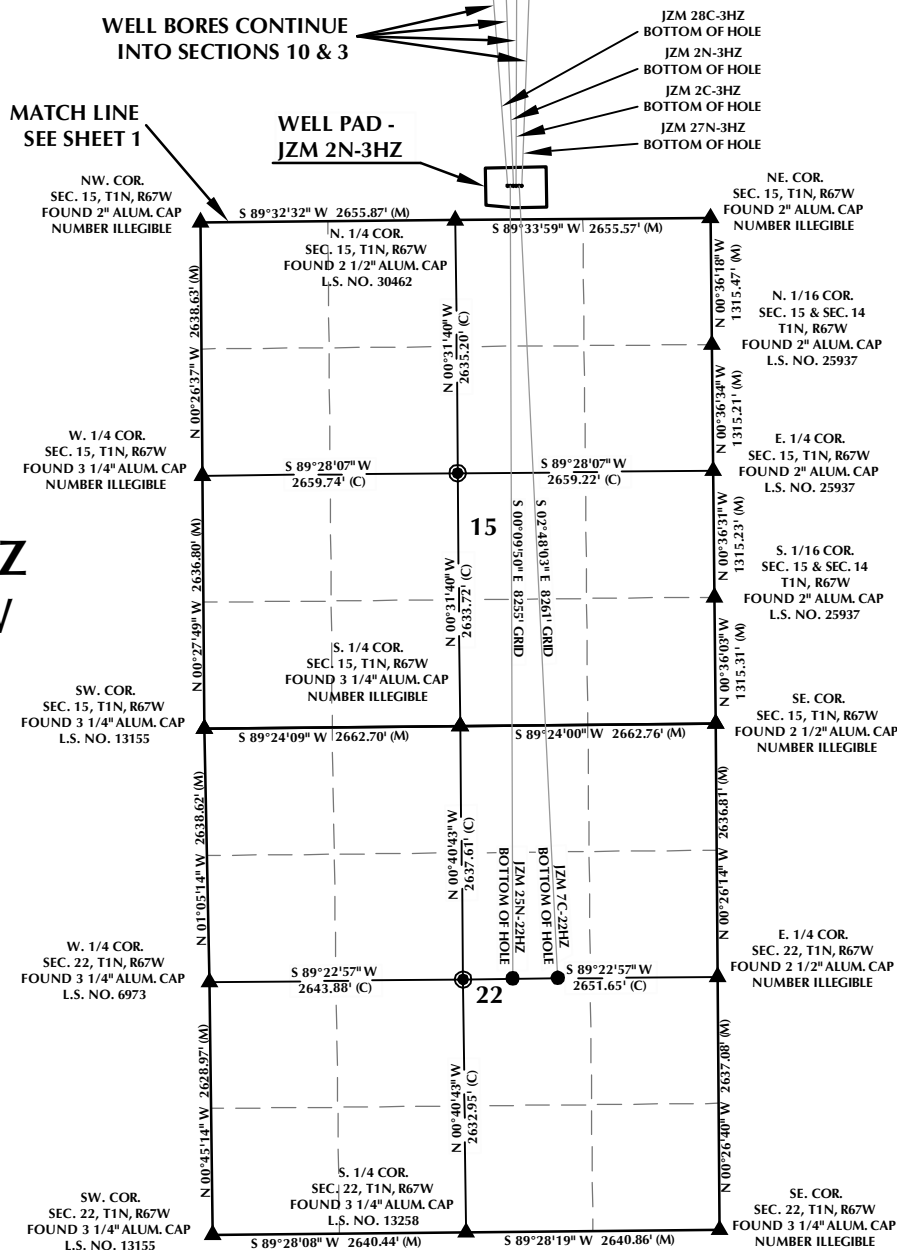
CONSULTING, LLC

SHERIDAN OFFICE
2155 North Main Street
Sheridan, Wyoming 82801
Phone 307-674-0609

LOVELAND OFFICE
1635 Foxtrail Drive, Suite 204
Loveland, Colorado 80538
Phone 970-776-4331

DRAFTED BY:	APF	CHECKED BY:	BJR	SHEET NO:
DATE DRAFTED:	10/25/13	DATE SURVEYED:	9/20/13	1
REVISED:		FILE NAME:	13-39	1 OF 2

JZM 2N-3HZ T1N, R67W



WELL NOTES:

JZM 28C-3HZ
SURFACE: 355' FSL, 2109' FWL
BOTTOM HOLE: 1' FNL, 2530' FWL

JZM 25N-22HZ
SURFACE: 355' FSL, 2079' FEL
BOTTOM HOLE: 2632' FNL, 2135' FEL

JZM 2N-3HZ
SURFACE: 355' FSL, 2049' FEL
BOTTOM HOLE: 1' FNL, 2275' FEL

JZM 2C-3HZ
SURFACE: 355' FSL, 2019' FEL
BOTTOM HOLE: 1' FNL, 1838' FEL

JZM 7C-22HZ
SURFACE: 355' FSL, 1989' FEL
BOTTOM HOLE: 2632' FNL, 1665' FEL

JZM 27N-3HZ
SURFACE: 355' FSL, 1959' FEL
BOTTOM HOLE: 1' FNL, 1395' FEL

NOTES:

- ▲ INDICATES FOUND SECTION CORNER
- INDICATES CALCULATED CORNER
- BASIS OF BEARING DERIVED FROM COLORADO COORDINATE SYSTEM 1983 NORTH ZONE UNLESS OTHERWISE NOTED.
- ALL MEASURED DISTANCES ARE GRID.
- COMBINED SCALE FACTOR: .99972303
- WELL FOOTAGES ARE MEASURED AT RIGHT ANGLES TO THE SECTION LINES.

WELL PAD - JZM 2N-3HZ

INTERFERENCE DIAGRAM
JZM 28C-3HZ, JZM 25N-22HZ,
JZM 2N-3HZ, JZM 2C-3HZ,
JZM 7C-22HZ & JZM 27N-3HZ
LOCATED IN SECTIONS 3, 10, 15 & 22
T1N, R67W, 6TH P.M.
WELD COUNTY, COLORADO

Kerr-McGee Oil &
Gas Onshore L.P.
1099 18th Street
Denver, Colorado 80202



CONSULTING, LLC

SHERIDAN OFFICE
2155 North Main Street
Sheridan, Wyoming 82801
Phone 307-674-0609

LOVELAND OFFICE
1635 Foxtrail Drive, Suite 204
Loveland, Colorado 80538
Phone 970-776-4331

DRAFTED BY:	APF	CHECKED BY:	BJR	SHEET NO:
DATE DRAFTED:	10/25/13	DATE SURVEYED:	9/20/13	2
REVISED:		FILE NAME:	13-39	2 OF 2