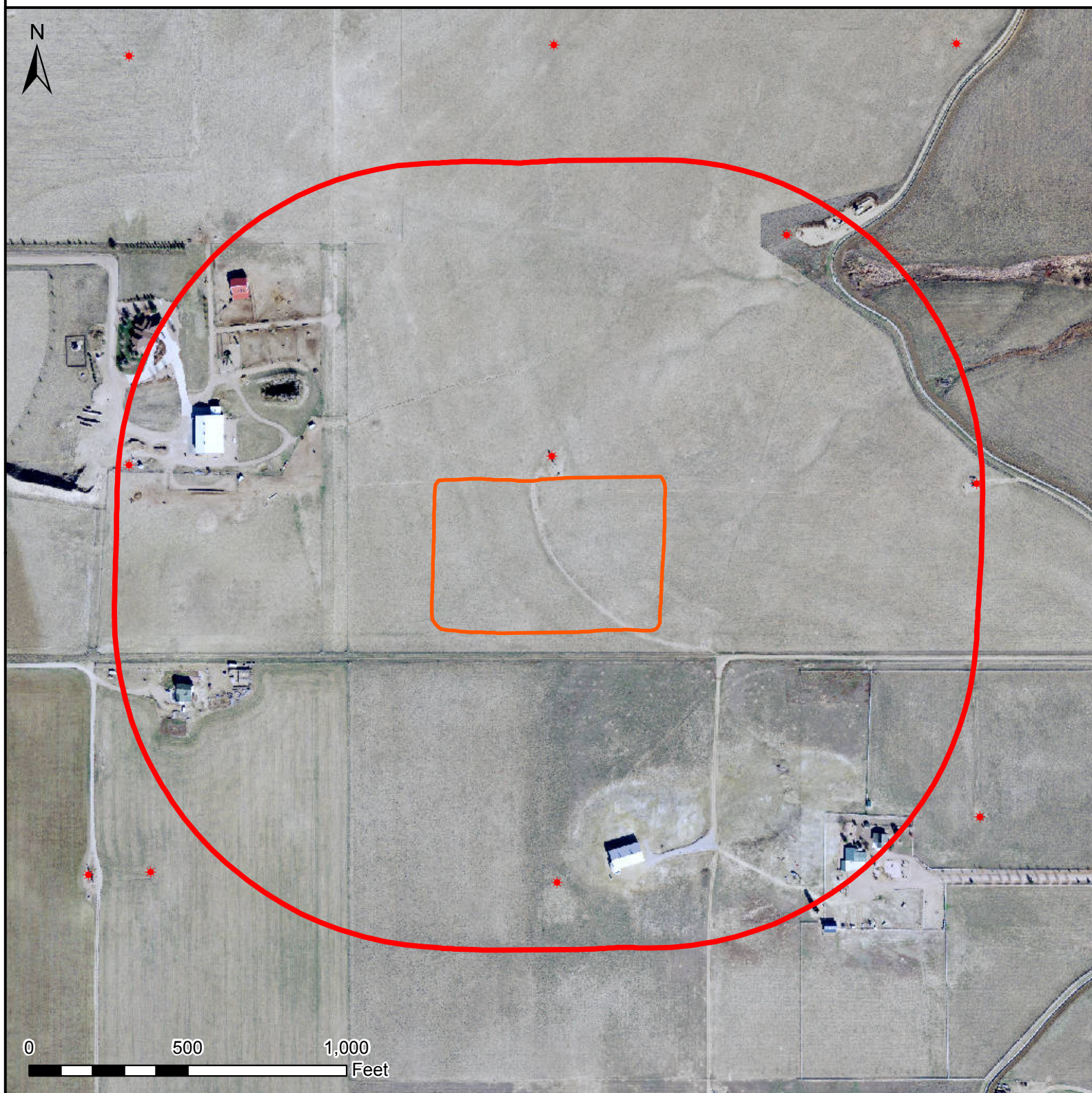





# HYDROLOGY MAP JZM 2N-3HZ



## Legend

-  Well pad (proposed)
-  1000' buffer
-  Existing oil/gas well (COGCC)

## Nearest Surface Water Feature

Ditch: 1240' NE, elevation: 5030'  
Wetlands: 1285' NE, elevation: 5028'  
Pond: 970' NW, elevation 5078'  
Well elevation: 5040'

All measurements are made from  
the reference well.



Date created: 2/13/2014  
Created by: APC Regulatory GIS  
Scale: 1:5,000  
Projection: NAD83 UTM 13N