

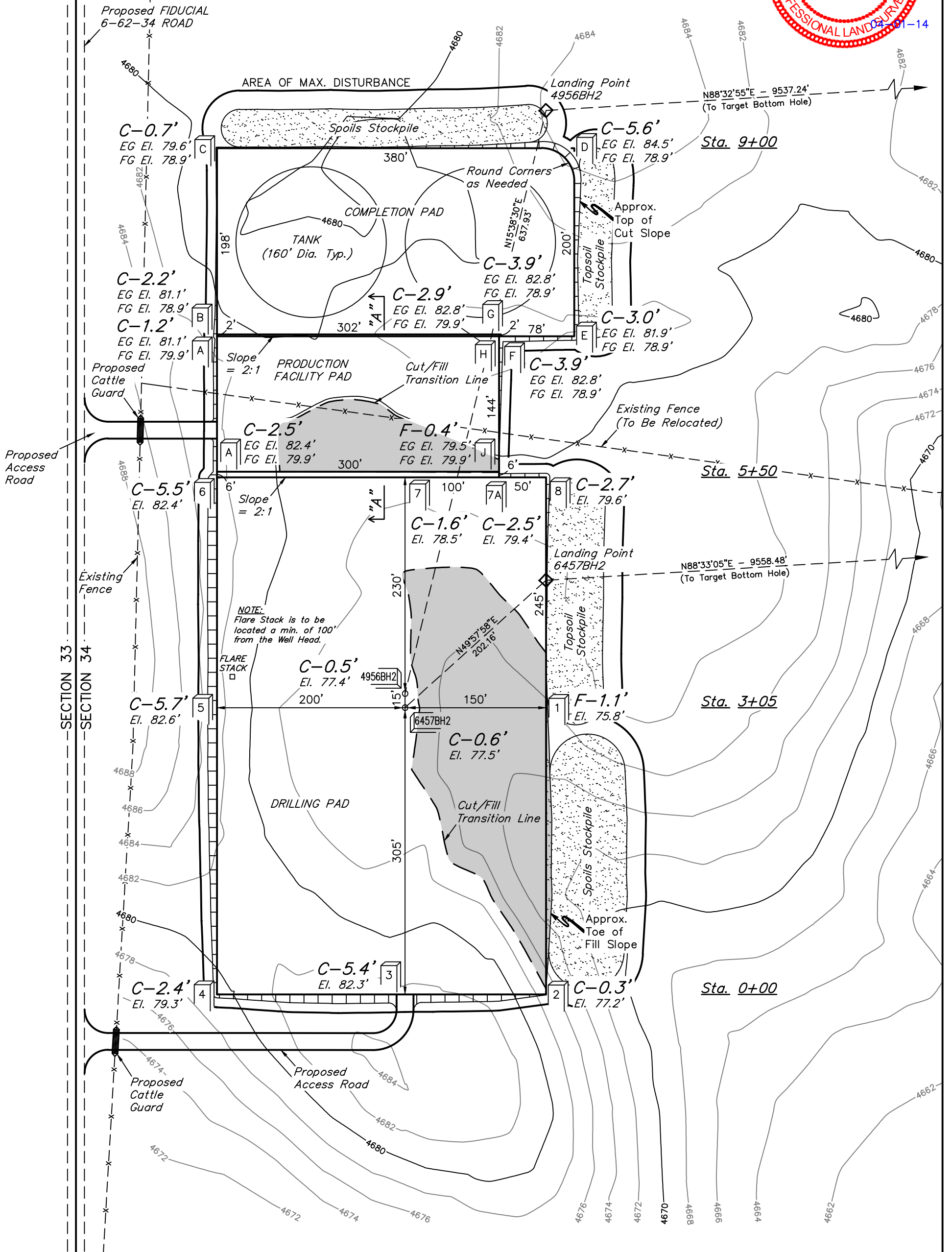
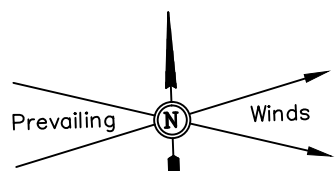
# BILL BARRETT CORPORATION

## CONSTRUCTION LAYOUT FOR

FIDUCIAL 6-62-34\_35 SWSW PAD #6-62-34-6457BH2 & 4956BH2  
SECTION 34, T6N, R62W, 6th P.M.  
SW 1/4 SW 1/4

FIGURE #1

SCALE: 1" = 100'  
DATE: 03-03-14  
DRAWN BY: J.S.  
REV: 03-25-14



Elev. Ungraded Ground At #6-62-34-6457BH2 Loc. Stake = 4677.5'  
FINISHED GRADE ELEV. AT #6-62-34-6457BH2 LOC. STAKE = 4676.9'

UINTAH ENGINEERING & LAND SURVEYING  
85 So. 200 East \* Vernal, Utah 84078 \* (435) 789-1017