

Synergy Resources

Well Name: **SRC Kelly Farms 22-4-3CHZ**

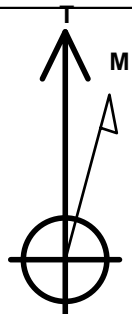
Surface Location: SRC Kelly Farms Pad Sec.4-T5N-R66W
North American Datum 1983 , US State Plane 1983 , Colorado Northern Zone
Ground Elevation: 4754.0

+N/-S	+E/-W	Northing	Easting	Latitude	Longitude	Slot
0.0	0.0	1400825.37	3199117.44	40.431463	-104.784723	

Ensign Rig #131 - RKB - 13.5' WELL @ 4767.5ft (Ensign Rig #131 - RKB - 13.5')

WELLBORE TARGET DETAILS

Name	TVD	+N/-S	+E/-W	Shape
SHL 2152'FNL & 2337'FWL, Sec. 4	1.0	0.0	0.0	Point
BHL 2330'FNL & 2114'FWL, Sec. 3	7222.0	-176.5	5116.3	Point
Landing Pt. 2330'FNL & 2229'FEL, Sec.4	7222.0	-171.6	766.7	Point



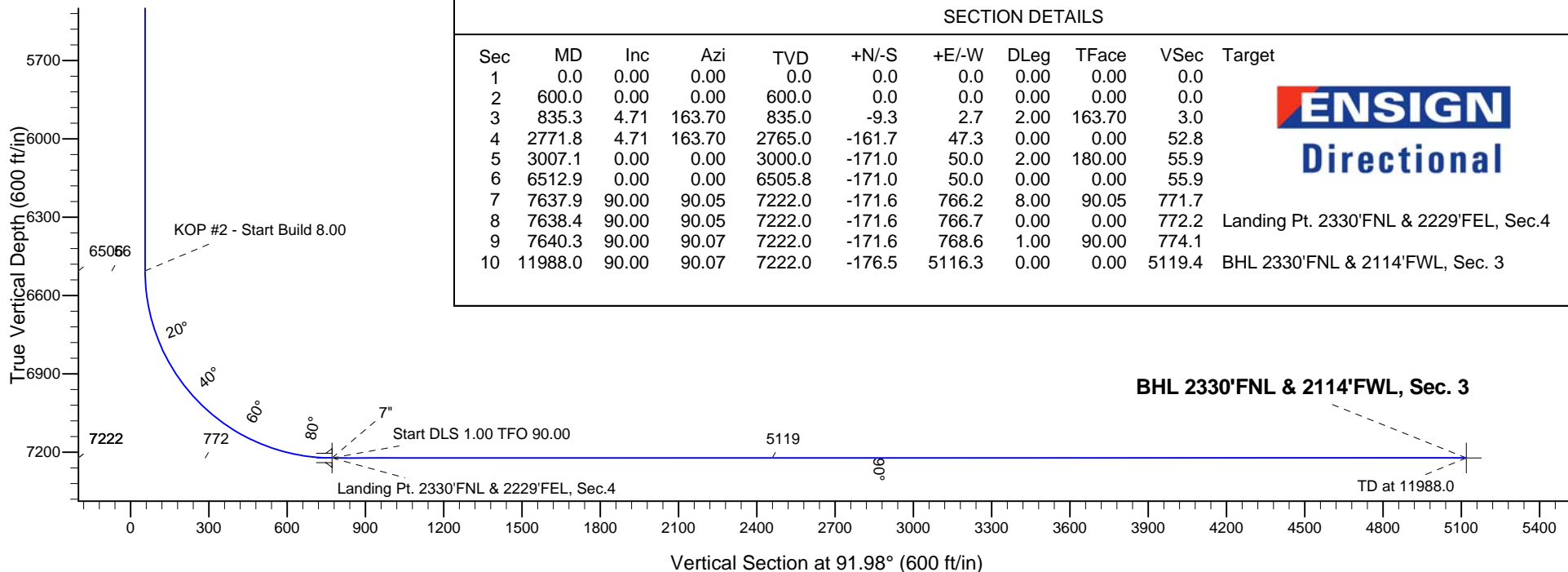
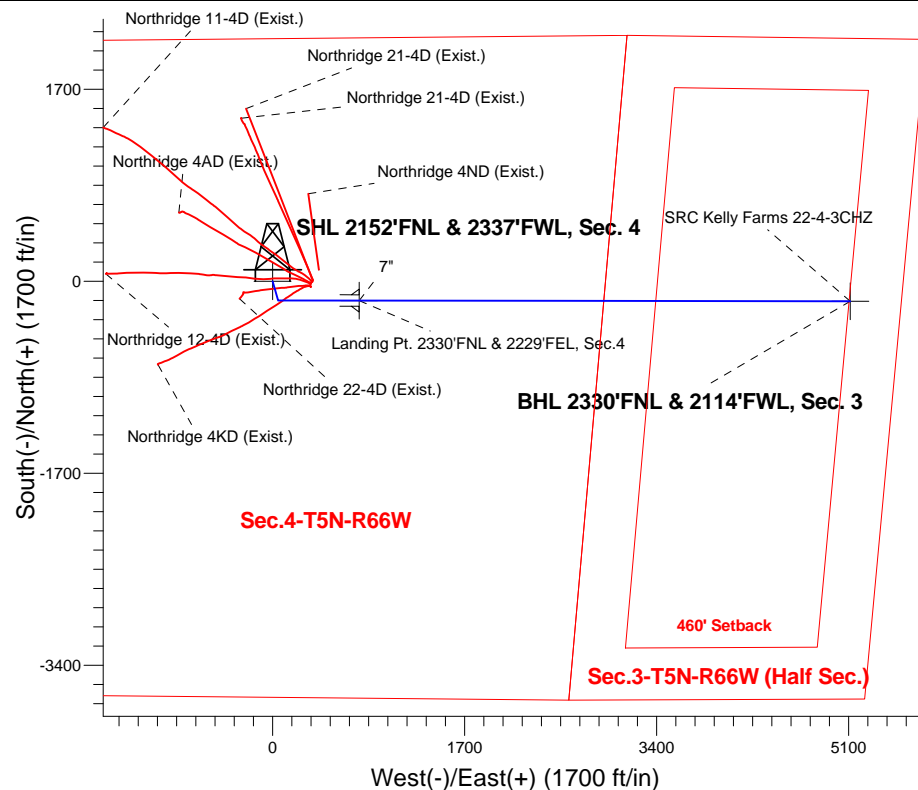
Azimuths to True North
Magnetic North: 8.49°

Magnetic Field
Strength: 52843.7nT
Dip Angle: 66.97°
Date: 4/29/2014
Model: IGRF2010

SRC Kelly Farms Pad Sec.4-T5N-R66W
SRC Kelly Farms 22-4-3CHZ
Plan #2 (4-21-14)
15:12, April 29 2014

ANNOTATIONS

TVD	MD	Annotation
600.0	600.0	KOP - Start Build 2.00
2765.0	2771.8	Start Drop -2.00
6505.8	6512.9	KOP #2 - Start Build 8.00
7222.0	7638.4	Start DLS 1.00 TFO 90.00
7222.0	11988.0	TD at 11988.0



ENSIGN
Directional



Synergy Resources

SEC.4-T5N-R66W

SRC Kelly Farms Pad Sec.4-T5N-R66W

SRC Kelly Farms 22-4-3CHZ

Wellbore #1

Plan: Plan #2 (4-21-14)

Standard Planning Report

29 April, 2014

Database:	Landmark	Local Co-ordinate Reference:	Well SRC Kelly Farms 22-4-3CHZ
Company:	Synergy Resources	TVD Reference:	WELL @ 4767.5ft (Ensign Rig #131 - RKB - 13.5')
Project:	SEC.4-T5N-R66W	MD Reference:	WELL @ 4767.5ft (Ensign Rig #131 - RKB - 13.5')
Site:	SRC Kelly Farms Pad Sec.4-T5N-R66W	North Reference:	True
Well:	SRC Kelly Farms 22-4-3CHZ	Survey Calculation Method:	Minimum Curvature
Wellbore:	Wellbore #1		
Design:	Plan #2 (4-21-14)		

Project	SEC.4-T5N-R66W, Weld County, Colorado		
Map System:	US State Plane 1983	System Datum:	Mean Sea Level
Geo Datum:	North American Datum 1983		Using Well Reference Point
Map Zone:	Colorado Northern Zone		Using geodetic scale factor

Site						SRC Kelly Farms Pad Sec.4-T5N-R66W											
Site Position:						Northing:			1,400,891.57 ft			Latitude:			40.431645		
From:			Lat/Long			Easting:			3,199,103.54 ft			Longitude:			-104.784771		
Position Uncertainty:			0.0 ft			Slot Radius:			"			Grid Convergence:			0.46 °		

Well	SRC Kelly Farms 22-4-3CHZ					
Well Position	+N-S	-66.3 ft	Northing:	1,400,825.37 ft	Latitude:	40.431463
	+E-W	13.4 ft	Easting:	3,199,117.44 ft	Longitude:	-104.784723
Position Uncertainty		0.0 ft	Wellhead Elevation:	ft	Ground Level:	4,754.0 ft

Wellbore	Wellbore #1				
Magnetics	Model Name	Sample Date	Declination (°)	Dip Angle (°)	Field Strength (nT)
	IGRF2010	4/29/2014	8.49	66.97	52,844

Design	Plan #2 (4-21-14)			
Audit Notes:				
Version:	Phase:	PROTOTYPE	Tie On Depth:	0.0
Vertical Section:	Depth From (TVD) (ft)	+N/-S (ft)	+E/-W (ft)	Direction (°)
	0.0	0.0	0.0	91.98

Plan Sections										
Measured Depth (ft)	Inclination (°)	Azimuth (°)	Vertical Depth (ft)	+N/-S (ft)	+E/-W (ft)	Dogleg Rate (°/100ft)	Build Rate (°/100ft)	Turn Rate (°/100ft)	TFO (°)	Target
0.0	0.00	0.00	0.0	0.0	0.0	0.00	0.00	0.00	0.00	
600.0	0.00	0.00	600.0	0.0	0.0	0.00	0.00	0.00	0.00	
835.3	4.71	163.70	835.0	-9.3	2.7	2.00	2.00	0.00	163.70	
2,771.8	4.71	163.70	2,765.0	-161.7	47.3	0.00	0.00	0.00	0.00	
3,007.1	0.00	0.00	3,000.0	-171.0	50.0	2.00	-2.00	0.00	180.00	
6,512.9	0.00	0.00	6,505.8	-171.0	50.0	0.00	0.00	0.00	0.00	
7,637.9	90.00	90.05	7,222.0	-171.6	766.2	8.00	8.00	0.00	90.05	
7,638.4	90.00	90.05	7,222.0	-171.6	766.7	0.00	0.00	0.00	0.00	Landing Pt. 2330'Ft
7,640.3	90.00	90.07	7,222.0	-171.6	768.6	1.00	0.00	1.00	90.00	
11,988.0	90.00	90.07	7,222.0	-176.5	5,116.3	0.00	0.00	0.00	0.00	BHL 2330'FNL & 21

Database:	Landmark	Local Co-ordinate Reference:	Well SRC Kelly Farms 22-4-3CHZ
Company:	Synergy Resources	TVD Reference:	WELL @ 4767.5ft (Ensign Rig #131 - RKB - 13.5')
Project:	SEC.4-T5N-R66W	MD Reference:	WELL @ 4767.5ft (Ensign Rig #131 - RKB - 13.5')
Site:	SRC Kelly Farms Pad Sec.4-T5N-R66W	North Reference:	True
Well:	SRC Kelly Farms 22-4-3CHZ	Survey Calculation Method:	Minimum Curvature
Wellbore:	Wellbore #1		
Design:	Plan #2 (4-21-14)		

Planned Survey

Measured Depth (ft)	Inclination (°)	Azimuth (°)	Vertical Depth (ft)	+N/-S (ft)	+E/-W (ft)	Vertical Section (ft)	Dogleg Rate (°/100ft)	Build Rate (°/100ft)	Turn Rate (°/100ft)
0.0	0.00	0.00	0.0	0.0	0.0	0.0	0.00	0.00	0.00
1.0	0.00	0.00	1.0	0.0	0.0	0.0	0.00	0.00	0.00
SHL 2152'FNL & 2337'FWL, Sec. 4									
100.0	0.00	0.00	100.0	0.0	0.0	0.0	0.00	0.00	0.00
200.0	0.00	0.00	200.0	0.0	0.0	0.0	0.00	0.00	0.00
300.0	0.00	0.00	300.0	0.0	0.0	0.0	0.00	0.00	0.00
400.0	0.00	0.00	400.0	0.0	0.0	0.0	0.00	0.00	0.00
500.0	0.00	0.00	500.0	0.0	0.0	0.0	0.00	0.00	0.00
600.0	0.00	0.00	600.0	0.0	0.0	0.0	0.00	0.00	0.00
KOP - Start Build 2.00									
700.0	2.00	163.70	700.0	-1.7	0.5	0.5	2.00	2.00	0.00
800.0	4.00	163.70	799.8	-6.7	2.0	2.2	2.00	2.00	0.00
835.3	4.71	163.70	835.0	-9.3	2.7	3.0	2.00	2.00	0.00
900.0	4.71	163.70	899.5	-14.4	4.2	4.7	0.00	0.00	0.00
1,000.0	4.71	163.70	999.2	-22.2	6.5	7.3	0.00	0.00	0.00
1,100.0	4.71	163.70	1,098.8	-30.1	8.8	9.8	0.00	0.00	0.00
1,200.0	4.71	163.70	1,198.5	-38.0	11.1	12.4	0.00	0.00	0.00
1,300.0	4.71	163.70	1,298.2	-45.9	13.4	15.0	0.00	0.00	0.00
1,400.0	4.71	163.70	1,397.8	-53.7	15.7	17.6	0.00	0.00	0.00
1,500.0	4.71	163.70	1,497.5	-61.6	18.0	20.1	0.00	0.00	0.00
1,600.0	4.71	163.70	1,597.2	-69.5	20.3	22.7	0.00	0.00	0.00
1,700.0	4.71	163.70	1,696.8	-77.3	22.6	25.3	0.00	0.00	0.00
1,800.0	4.71	163.70	1,796.5	-85.2	24.9	27.8	0.00	0.00	0.00
1,900.0	4.71	163.70	1,896.1	-93.1	27.2	30.4	0.00	0.00	0.00
2,000.0	4.71	163.70	1,995.8	-101.0	29.5	33.0	0.00	0.00	0.00
2,100.0	4.71	163.70	2,095.5	-108.8	31.8	35.6	0.00	0.00	0.00
2,200.0	4.71	163.70	2,195.1	-116.7	34.1	38.1	0.00	0.00	0.00
2,300.0	4.71	163.70	2,294.8	-124.6	36.4	40.7	0.00	0.00	0.00
2,400.0	4.71	163.70	2,394.5	-132.5	38.7	43.3	0.00	0.00	0.00
2,500.0	4.71	163.70	2,494.1	-140.3	41.0	45.8	0.00	0.00	0.00
2,600.0	4.71	163.70	2,593.8	-148.2	43.3	48.4	0.00	0.00	0.00
2,700.0	4.71	163.70	2,693.5	-156.1	45.6	51.0	0.00	0.00	0.00
2,771.8	4.71	163.70	2,765.0	-161.7	47.3	52.8	0.00	0.00	0.00
Start Drop -2.00									
2,800.0	4.14	163.70	2,793.1	-163.8	47.9	53.5	2.00	-2.00	0.00
2,900.0	2.14	163.70	2,893.0	-169.1	49.4	55.2	2.00	-2.00	0.00
3,000.0	0.14	163.70	2,992.9	-171.0	50.0	55.9	2.00	-2.00	0.00
3,007.1	0.00	0.00	3,000.0	-171.0	50.0	55.9	2.00	-2.00	0.00
3,100.0	0.00	0.00	3,092.9	-171.0	50.0	55.9	0.00	0.00	0.00
3,200.0	0.00	0.00	3,192.9	-171.0	50.0	55.9	0.00	0.00	0.00
3,300.0	0.00	0.00	3,292.9	-171.0	50.0	55.9	0.00	0.00	0.00
3,400.0	0.00	0.00	3,392.9	-171.0	50.0	55.9	0.00	0.00	0.00
3,500.0	0.00	0.00	3,492.9	-171.0	50.0	55.9	0.00	0.00	0.00
3,600.0	0.00	0.00	3,592.9	-171.0	50.0	55.9	0.00	0.00	0.00
3,700.0	0.00	0.00	3,692.9	-171.0	50.0	55.9	0.00	0.00	0.00
3,800.0	0.00	0.00	3,792.9	-171.0	50.0	55.9	0.00	0.00	0.00
3,900.0	0.00	0.00	3,892.9	-171.0	50.0	55.9	0.00	0.00	0.00
4,000.0	0.00	0.00	3,992.9	-171.0	50.0	55.9	0.00	0.00	0.00
4,100.0	0.00	0.00	4,092.9	-171.0	50.0	55.9	0.00	0.00	0.00
4,200.0	0.00	0.00	4,192.9	-171.0	50.0	55.9	0.00	0.00	0.00
4,300.0	0.00	0.00	4,292.9	-171.0	50.0	55.9	0.00	0.00	0.00
4,400.0	0.00	0.00	4,392.9	-171.0	50.0	55.9	0.00	0.00	0.00

Database:	Landmark	Local Co-ordinate Reference:	Well SRC Kelly Farms 22-4-3CHZ
Company:	Synergy Resources	TVD Reference:	WELL @ 4767.5ft (Ensign Rig #131 - RKB - 13.5')
Project:	SEC.4-T5N-R66W	MD Reference:	WELL @ 4767.5ft (Ensign Rig #131 - RKB - 13.5')
Site:	SRC Kelly Farms Pad Sec.4-T5N-R66W	North Reference:	True
Well:	SRC Kelly Farms 22-4-3CHZ	Survey Calculation Method:	Minimum Curvature
Wellbore:	Wellbore #1		
Design:	Plan #2 (4-21-14)		

Planned Survey									
Measured Depth (ft)	Inclination (°)	Azimuth (°)	Vertical Depth (ft)	+N/-S (ft)	+E/-W (ft)	Vertical Section (ft)	Dogleg Rate (°/100ft)	Build Rate (°/100ft)	Turn Rate (°/100ft)
4,500.0	0.00	0.00	4,492.9	-171.0	50.0	55.9	0.00	0.00	0.00
4,600.0	0.00	0.00	4,592.9	-171.0	50.0	55.9	0.00	0.00	0.00
4,700.0	0.00	0.00	4,692.9	-171.0	50.0	55.9	0.00	0.00	0.00
4,800.0	0.00	0.00	4,792.9	-171.0	50.0	55.9	0.00	0.00	0.00
4,900.0	0.00	0.00	4,892.9	-171.0	50.0	55.9	0.00	0.00	0.00
5,000.0	0.00	0.00	4,992.9	-171.0	50.0	55.9	0.00	0.00	0.00
5,100.0	0.00	0.00	5,092.9	-171.0	50.0	55.9	0.00	0.00	0.00
5,200.0	0.00	0.00	5,192.9	-171.0	50.0	55.9	0.00	0.00	0.00
5,300.0	0.00	0.00	5,292.9	-171.0	50.0	55.9	0.00	0.00	0.00
5,400.0	0.00	0.00	5,392.9	-171.0	50.0	55.9	0.00	0.00	0.00
5,500.0	0.00	0.00	5,492.9	-171.0	50.0	55.9	0.00	0.00	0.00
5,600.0	0.00	0.00	5,592.9	-171.0	50.0	55.9	0.00	0.00	0.00
5,700.0	0.00	0.00	5,692.9	-171.0	50.0	55.9	0.00	0.00	0.00
5,800.0	0.00	0.00	5,792.9	-171.0	50.0	55.9	0.00	0.00	0.00
5,900.0	0.00	0.00	5,892.9	-171.0	50.0	55.9	0.00	0.00	0.00
6,000.0	0.00	0.00	5,992.9	-171.0	50.0	55.9	0.00	0.00	0.00
6,100.0	0.00	0.00	6,092.9	-171.0	50.0	55.9	0.00	0.00	0.00
6,200.0	0.00	0.00	6,192.9	-171.0	50.0	55.9	0.00	0.00	0.00
6,300.0	0.00	0.00	6,292.9	-171.0	50.0	55.9	0.00	0.00	0.00
6,400.0	0.00	0.00	6,392.9	-171.0	50.0	55.9	0.00	0.00	0.00
6,500.0	0.00	0.00	6,492.9	-171.0	50.0	55.9	0.00	0.00	0.00
6,512.9	0.00	0.00	6,505.8	-171.0	50.0	55.9	0.00	0.00	0.00
KOP #2 - Start Build 8.00									
6,600.0	6.97	90.05	6,592.7	-171.0	55.3	61.2	8.00	8.00	0.00
6,700.0	14.97	90.05	6,690.8	-171.0	74.3	80.2	8.00	8.00	0.00
6,800.0	22.97	90.05	6,785.3	-171.0	106.8	112.6	8.00	8.00	0.00
6,900.0	30.97	90.05	6,874.4	-171.1	152.1	157.9	8.00	8.00	0.00
7,000.0	38.97	90.05	6,956.2	-171.1	209.4	215.2	8.00	8.00	0.00
7,100.0	46.97	90.05	7,029.4	-171.2	277.5	283.2	8.00	8.00	0.00
7,200.0	54.97	90.05	7,092.3	-171.2	355.1	360.8	8.00	8.00	0.00
7,300.0	62.97	90.05	7,143.8	-171.3	440.7	446.4	8.00	8.00	0.00
7,400.0	70.97	90.05	7,182.9	-171.4	532.7	538.3	8.00	8.00	0.00
7,500.0	78.97	90.05	7,208.8	-171.5	629.2	634.7	8.00	8.00	0.00
7,600.0	86.97	90.05	7,221.0	-171.5	728.4	733.8	8.00	8.00	0.00
7,637.9	90.00	90.05	7,222.0	-171.6	766.2	771.7	8.00	8.00	0.00
7,638.4	90.00	90.05	7,222.0	-171.6	766.7	772.2	0.00	0.00	0.00
Start DLS 1.00 TFO 90.00 - 7" - Landing Pt. 2330'FNL & 2229'FEL, Sec.4									
7,640.3	90.00	90.07	7,222.0	-171.6	768.6	774.1	1.00	0.00	1.00
7,700.0	90.00	90.07	7,222.0	-171.6	828.3	833.8	0.00	0.00	0.00
7,800.0	90.00	90.07	7,222.0	-171.8	928.3	933.7	0.00	0.00	0.00
7,900.0	90.00	90.07	7,222.0	-171.9	1,028.3	1,033.7	0.00	0.00	0.00
8,000.0	90.00	90.07	7,222.0	-172.0	1,128.3	1,133.6	0.00	0.00	0.00
8,100.0	90.00	90.07	7,222.0	-172.1	1,228.3	1,233.5	0.00	0.00	0.00
8,200.0	90.00	90.07	7,222.0	-172.2	1,328.3	1,333.5	0.00	0.00	0.00
8,300.0	90.00	90.07	7,222.0	-172.3	1,428.3	1,433.4	0.00	0.00	0.00
8,400.0	90.00	90.07	7,222.0	-172.4	1,528.3	1,533.4	0.00	0.00	0.00
8,500.0	90.00	90.07	7,222.0	-172.6	1,628.3	1,633.3	0.00	0.00	0.00
8,600.0	90.00	90.07	7,222.0	-172.7	1,728.3	1,733.3	0.00	0.00	0.00
8,700.0	90.00	90.07	7,222.0	-172.8	1,828.3	1,833.2	0.00	0.00	0.00
8,800.0	90.00	90.07	7,222.0	-172.9	1,928.3	1,933.2	0.00	0.00	0.00
8,900.0	90.00	90.07	7,222.0	-173.0	2,028.3	2,033.1	0.00	0.00	0.00
9,000.0	90.00	90.07	7,222.0	-173.1	2,128.3	2,133.0	0.00	0.00	0.00

Plan Annotations					
	Measured Depth (ft)	Vertical Depth (ft)	Local Coordinates		Comment
			+N/-S (ft)	+E/-W (ft)	
	600.0	600.0	0.0	0.0	KOP - Start Build 2.00
	2,771.8	2,765.0	-161.7	47.3	Start Drop -2.00
	6,512.9	6,505.8	-171.0	50.0	KOP #2 - Start Build 8.00
	7,638.4	7,222.0	-171.6	766.7	Start DLS 1.00 TFO 90.00
	11,988.0	7,222.0	-176.5	5,116.3	TD at 11988.0



Synergy Resources

SEC.4-T5N-R66W

SRC Kelly Farms Pad Sec.4-T5N-R66W

SRC Kelly Farms 22-4-3CHZ

Wellbore #1

Plan #2 (4-21-14)

Anticollision Report

29 April, 2014

Company:	Synergy Resources	Local Co-ordinate Reference:	Well SRC Kelly Farms 22-4-3CHZ
Project:	SEC.4-T5N-R66W	TVD Reference:	WELL @ 4767.5ft (Ensign Rig #131 - RKB - 13.5')
Reference Site:	SRC Kelly Farms Pad Sec.4-T5N-R66W	MD Reference:	WELL @ 4767.5ft (Ensign Rig #131 - RKB - 13.5')
Site Error:	0.0ft	North Reference:	True
Reference Well:	SRC Kelly Farms 22-4-3CHZ	Survey Calculation Method:	Minimum Curvature
Well Error:	0.0ft	Output errors are at	2.00 sigma
Reference Wellbore	Wellbore #1	Database:	Landmark
Reference Design:	Plan #2 (4-21-14)	Offset TVD Reference:	Offset Datum

Offset Design Northridge Pad Sec.4-T5N-R66W - Northridge 11-4D (Exist.) - Wellbore #1 - Wellbore #1													Offset Site Error:	0.0 ft
Survey Program: 147-MWD													Offset Well Error:	0.0 ft
Reference		Offset		Semi Major Axis		Distance							Warning	
Measured Depth (ft)	Vertical Depth (ft)	Measured Depth (ft)	Vertical Depth (ft)	Reference (ft)	Offset (ft)	Highside Toolface (°)	Offset Wellbore Centre +N/-S (ft)	+E/-W (ft)	Between Centres (ft)	Between Ellipses (ft)	Minimum Separation (ft)	Separation Factor		
0.0	0.0	0.0	0.0	0.0	0.0	90.36	-2.2	351.1	351.4					
100.0	100.0	81.2	81.2	0.1	0.1	90.43	-2.6	351.6	351.6	351.4	0.21	1,703.539		
200.0	200.0	182.1	182.1	0.3	0.2	90.68	-4.2	353.2	353.3	352.7	0.58	611.543		
300.0	300.0	295.5	295.5	0.6	0.5	90.63	-3.9	352.1	352.3	351.2	1.04	340.039		
400.0	400.0	405.2	405.0	0.8	0.7	89.95	0.3	347.4	347.9	346.4	1.50	231.214		
500.0	500.0	518.9	518.0	1.0	1.0	88.53	8.7	338.8	340.5	338.5	2.00	169.862		
600.0	600.0	628.8	626.6	1.2	1.4	86.42	20.4	326.3	329.5	327.0	2.52	130.563		
700.0	700.0	731.5	727.5	1.4	1.7	-80.18	32.2	311.7	315.8	312.7	3.06	103.046		
800.0	799.8	826.8	821.4	1.6	2.1	-83.64	42.6	298.4	302.7	299.2	3.54	85.417		
900.0	899.5	931.2	923.6	1.8	2.5	-88.62	56.5	282.7	290.0	285.8	4.13	70.159		
1,000.0	999.2	1,042.0	1,031.4	2.0	3.0	-94.38	69.9	261.1	274.8	269.9	4.84	56.771		
1,100.0	1,098.8	1,143.1	1,128.7	2.3	3.5	-100.76	82.6	236.9	258.2	252.6	5.60	46.119		
1,200.0	1,198.5	1,237.3	1,218.5	2.5	4.1	-108.11	96.6	212.0	244.3	237.8	6.43	37.969		
1,300.0	1,298.2	1,328.5	1,304.3	2.8	4.7	-116.73	113.6	185.9	235.8	228.5	7.34	32.126		
1,360.0	1,358.0	1,381.4	1,353.7	2.9	5.0	-122.09	124.1	170.4	234.2	226.3	7.89	29.691 CC, ES		
1,400.0	1,397.8	1,414.5	1,384.4	3.0	5.3	-125.58	131.3	160.6	235.0	226.8	8.24	28.538		
1,500.0	1,497.5	1,500.3	1,463.4	3.3	5.9	-134.75	152.4	134.6	244.5	235.5	9.08	26.939		
1,600.0	1,597.2	1,589.9	1,545.6	3.6	6.6	-143.69	174.8	106.9	261.8	251.9	9.84	26.590 SF		
1,700.0	1,696.8	1,676.0	1,623.9	3.8	7.3	-151.62	196.8	78.6	285.9	275.4	10.50	27.235		
1,800.0	1,796.5	1,763.7	1,703.2	4.1	8.1	-158.68	220.0	49.0	316.2	305.1	11.07	28.555		
1,900.0	1,896.1	1,856.6	1,787.2	4.3	8.9	-165.11	243.0	16.7	349.3	337.7	11.58	30.166		
2,000.0	1,995.8	1,938.4	1,860.8	4.6	9.6	-170.00	263.4	-12.6	386.0	374.0	12.02	32.110		
2,100.0	2,095.5	2,019.0	1,933.0	4.9	10.3	-174.03	284.6	-41.3	426.7	414.2	12.45	34.260		
2,200.0	2,195.1	2,113.0	2,017.5	5.2	11.1	-177.94	309.2	-74.5	468.8	456.0	12.87	36.416		
2,300.0	2,294.8	2,188.2	2,084.9	5.4	11.8	-179.37	328.8	-101.4	512.6	499.4	13.27	38.626		
2,400.0	2,394.5	2,260.9	2,149.4	5.7	12.4	-177.16	349.8	-127.5	559.8	546.1	13.67	40.953		
2,500.0	2,494.1	2,357.1	2,234.9	6.0	13.3	-174.93	379.4	-160.3	608.7	594.6	14.13	43.087		
2,600.0	2,593.8	2,472.8	2,339.1	6.2	14.3	-172.40	409.4	-200.6	654.3	639.7	14.61	44.799		
2,700.0	2,693.5	2,552.2	2,410.8	6.5	15.0	-170.76	428.0	-229.2	699.0	684.0	15.03	46.506		
2,800.0	2,793.1	2,631.8	2,482.2	6.8	15.7	-169.34	447.8	-258.3	745.4	729.9	15.49	48.115		
2,900.0	2,893.0	2,704.7	2,547.5	7.0	16.4	-168.38	466.7	-284.5	790.7	774.8	15.98	49.482		
3,000.0	2,992.9	2,768.0	2,603.5	7.2	17.0	-167.70	485.2	-307.5	836.0	819.6	16.45	50.832		
3,100.0	3,092.9	2,822.9	2,651.3	7.3	17.5	-29.29	502.9	-327.9	882.8	859.2	23.60	37.410		
3,200.0	3,192.9	2,893.7	2,711.9	7.5	18.3	-30.12	527.4	-355.1	932.5	908.0	24.55	37.982		
3,300.0	3,292.9	3,059.8	2,856.7	7.7	19.9	-31.83	580.7	-416.6	980.2	953.8	26.43	37.087		

Company:	Synergy Resources	Local Co-ordinate Reference:	Well SRC Kelly Farms 22-4-3CHZ
Project:	SEC.4-T5N-R66W	TVD Reference:	WELL @ 4767.5ft (Ensign Rig #131 - RKB - 13.5')
Reference Site:	SRC Kelly Farms Pad Sec.4-T5N-R66W	MD Reference:	WELL @ 4767.5ft (Ensign Rig #131 - RKB - 13.5')
Site Error:	0.0ft	North Reference:	True
Reference Well:	SRC Kelly Farms 22-4-3CHZ	Survey Calculation Method:	Minimum Curvature
Well Error:	0.0ft	Output errors are at	2.00 sigma
Reference Wellbore	Wellbore #1	Database:	Landmark
Reference Design:	Plan #2 (4-21-14)	Offset TVD Reference:	Offset Datum

Offset Design Northridge Pad Sec.4-T5N-R66W - Northridge 12-4D (Exist.) - Wellbore #1 - Wellbore #1												Offset Site Error: 0.0 ft	
Survey Program: 182-MWD												Offset Well Error: 0.0 ft	
Reference		Offset		Semi Major Axis		Distance							Warning
Measured Depth (ft)	Vertical Depth (ft)	Measured Depth (ft)	Vertical Depth (ft)	Reference (ft)	Offset (ft)	Highside Toolface (°)	Offset Wellbore Centre +N/-S (ft)	+E/-W (ft)	Between Centres (ft)	Between Ellipses (ft)	Minimum Separation (ft)	Separation Factor	
0.0	0.0	0.0	0.0	0.0	0.0	93.87	-23.0	339.1	340.1				
100.0	100.0	86.1	86.1	0.1	0.1	93.87	-22.9	339.1	339.9	339.7	0.21	1,625.193	
200.0	200.0	185.6	185.6	0.3	0.2	93.84	-22.8	339.4	340.1	339.6	0.55	619.544	
300.0	300.0	288.5	288.5	0.6	0.4	93.94	-23.4	339.2	340.0	339.1	0.98	345.865	
400.0	400.0	399.4	399.3	0.8	0.7	93.80	-22.4	337.2	338.2	336.8	1.44	234.794	
500.0	500.0	522.1	521.7	1.0	0.9	93.21	-18.5	328.9	331.3	329.3	1.95	169.568	
600.0	600.0	631.5	630.1	1.2	1.2	92.38	-13.1	315.3	318.6	316.1	2.45	130.175	
700.0	700.0	737.0	734.2	1.4	1.6	-73.10	-6.4	300.0	303.3	300.4	2.91	104.089	
800.0	799.8	838.1	833.8	1.6	2.0	-75.68	-0.3	283.6	285.7	282.4	3.36	85.142	
900.0	899.5	939.9	934.0	1.8	2.3	-78.84	5.1	265.8	266.7	262.9	3.84	69.484	
1,000.0	999.2	1,039.2	1,031.1	2.0	2.7	-82.63	11.7	246.9	247.0	242.7	4.36	56.609	
1,100.0	1,098.8	1,136.9	1,126.8	2.3	3.1	-86.78	17.2	227.8	227.9	223.0	4.91	46.375	
1,200.0	1,198.5	1,239.9	1,227.6	2.5	3.6	-91.52	21.2	206.5	208.5	203.0	5.52	37.765	
1,300.0	1,298.2	1,343.0	1,327.5	2.8	4.1	-97.41	24.3	181.7	187.3	181.1	6.22	30.136	
1,400.0	1,397.8	1,438.5	1,420.0	3.0	4.5	-103.88	25.7	157.7	166.5	159.6	6.92	24.066	
1,500.0	1,497.5	1,533.2	1,512.1	3.3	4.9	-110.74	24.8	135.9	148.8	141.2	7.62	19.532	
1,600.0	1,597.2	1,631.9	1,607.8	3.6	5.4	-120.26	24.8	111.7	133.5	125.0	8.45	15.797	
1,700.0	1,696.8	1,729.8	1,701.9	3.8	5.9	-132.83	25.0	84.9	121.3	111.9	9.39	12.912	
1,800.0	1,796.5	1,824.6	1,792.5	4.1	6.5	-147.65	25.3	57.0	115.4	105.1	10.29	11.221	
1,813.3	1,809.7	1,837.1	1,804.4	4.1	6.6	-149.75	25.4	53.1	115.3	104.9	10.40	11.094 CC, ES	
1,900.0	1,896.1	1,919.4	1,882.5	4.3	7.1	-163.64	26.0	27.2	119.1	108.1	11.01	10.818 SF	
2,000.0	1,995.8	2,017.7	1,975.7	4.6	7.7	-178.77	23.9	-4.1	129.4	117.9	11.50	11.255	
2,100.0	2,095.5	2,109.9	2,062.9	4.9	8.3	169.22	20.6	-33.9	146.4	134.6	11.85	12.355	
2,200.0	2,195.1	2,197.0	2,144.4	5.2	8.9	159.86	19.0	-64.5	171.9	159.7	12.16	14.129	
2,300.0	2,294.8	2,288.3	2,229.5	5.4	9.5	152.50	18.4	-97.6	202.8	190.3	12.48	16.250	
2,400.0	2,394.5	2,378.6	2,314.1	5.7	10.1	147.82	20.5	-129.1	236.7	223.9	12.84	18.438	
2,500.0	2,494.1	2,473.3	2,403.4	6.0	10.7	144.70	24.5	-160.4	271.5	258.2	13.25	20.487	
2,600.0	2,593.8	2,562.4	2,487.2	6.2	11.3	142.28	27.9	-190.5	307.2	293.5	13.69	22.432	
2,700.0	2,693.5	2,650.0	2,569.2	6.5	11.9	140.29	31.3	-220.9	344.2	330.0	14.16	24.304	
2,800.0	2,793.1	2,731.6	2,644.9	6.8	12.5	138.69	34.2	-251.3	383.3	368.6	14.65	26.157	
2,900.0	2,893.0	2,809.6	2,715.9	7.0	13.2	137.30	36.0	-283.6	424.0	408.8	15.15	27.983	
3,000.0	2,992.9	2,905.6	2,802.5	7.2	14.0	135.37	37.9	-325.1	464.4	448.7	15.66	29.650	
3,100.0	3,092.9	2,994.3	2,883.2	7.3	14.8	-62.87	39.9	-361.7	502.5	481.6	20.89	24.049	
3,200.0	3,192.9	3,073.9	2,955.3	7.5	15.4	-64.24	43.8	-395.1	542.6	520.8	21.80	24.894	
3,300.0	3,292.9	3,176.4	3,047.7	7.7	16.3	-65.84	48.5	-439.4	584.3	561.4	22.92	25.493	
3,400.0	3,392.9	3,282.1	3,144.6	7.9	17.2	-67.22	52.1	-481.3	622.3	598.3	23.99	25.940	
3,500.0	3,492.9	3,394.6	3,248.6	8.0	18.0	-68.50	55.3	-524.3	659.0	633.9	25.06	26.294	
3,600.0	3,592.9	3,549.9	3,395.2	8.2	19.0	-70.33	52.5	-575.2	689.0	662.8	26.28	26.222	
3,700.0	3,692.9	3,669.6	3,510.9	8.4	19.6	-70.79	57.3	-605.3	714.1	687.0	27.09	26.356	
3,800.0	3,792.9	3,756.4	3,595.1	8.6	20.0	-71.13	60.2	-626.3	738.1	710.4	27.73	26.615	
3,900.0	3,892.9	3,828.4	3,664.4	8.8	20.4	-71.40	63.0	-645.4	764.5	736.2	28.34	26.974	
4,000.0	3,992.9	3,900.4	3,733.0	9.0	20.9	-71.74	65.6	-667.1	794.3	765.3	29.00	27.390	
4,100.0	4,092.9	3,977.5	3,805.8	9.1	21.4	-72.17	67.7	-692.3	826.4	796.6	29.73	27.793	
4,200.0	4,192.9	4,056.0	3,879.3	9.3	22.0	-72.67	69.2	-719.9	860.5	830.0	30.51	28.200	
4,300.0	4,292.9	4,130.6	3,948.6	9.5	22.6	-73.16	70.4	-747.5	896.5	865.2	31.31	28.638	
4,400.0	4,392.9	4,247.1	4,056.7	9.7	23.4	-73.86	72.3	-790.7	932.8	900.4	32.40	28.794	
4,500.0	4,492.9	4,363.7	4,166.5	9.9	24.2	-74.51	73.0	-830.1	965.4	932.0	33.39	28.912	
4,600.0	4,592.9	4,434.4	4,232.8	10.1	24.7	-74.92	72.8	-854.7	999.0	965.0	34.09	29.302	

Company:	Synergy Resources	Local Co-ordinate Reference:	Well SRC Kelly Farms 22-4-3CHZ
Project:	SEC.4-T5N-R66W	TVD Reference:	WELL @ 4767.5ft (Ensign Rig #131 - RKB - 13.5')
Reference Site:	SRC Kelly Farms Pad Sec.4-T5N-R66W	MD Reference:	WELL @ 4767.5ft (Ensign Rig #131 - RKB - 13.5')
Site Error:	0.0ft	North Reference:	True
Reference Well:	SRC Kelly Farms 22-4-3CHZ	Survey Calculation Method:	Minimum Curvature
Well Error:	0.0ft	Output errors are at	2.00 sigma
Reference Wellbore	Wellbore #1	Database:	Landmark
Reference Design:	Plan #2 (4-21-14)	Offset TVD Reference:	Offset Datum

Offset Design Northridge Pad Sec.4-T5N-R66W - Northridge 21-4D (Exist.) - Wellbore #1 - Plan #4 (4-7-10)													Offset Site Error:	0.0 ft
Survey Program: 0-MWD													Offset Well Error:	0.0 ft
Reference		Offset		Semi Major Axis			Distance							Warning
Measured Depth	Vertical Depth	Measured Depth	Vertical Depth	Reference	Offset	Highside Toolface	Offset Wellbore Centre	Between Centres	Between Ellipses	Minimum Separation	Separation Factor			
(ft)	(ft)	(ft)	(ft)	(ft)	(ft)	(°)	+N/-S (ft)	+E/-W (ft)	(ft)	(ft)	(ft)			
0.0	0.0	0.0	0.0	0.0	0.0	88.66	8.4	356.9	357.3					
100.0	100.0	85.5	85.5	0.1	0.1	88.66	8.4	356.9	357.0	356.8	0.21	1,712.221		
200.0	200.0	185.5	185.5	0.3	0.3	88.66	8.4	356.9	357.0	356.4	0.64	556.324		
300.0	300.0	289.3	289.2	0.6	0.5	88.45	9.7	356.4	356.5	355.4	1.10	324.275		
400.0	400.0	393.4	393.3	0.8	0.8	87.66	14.5	354.5	354.9	353.3	1.56	226.818		
500.0	500.0	497.1	496.6	1.0	1.0	86.30	22.7	351.3	352.2	350.2	2.04	172.370		
600.0	600.0	600.0	598.7	1.2	1.3	84.34	34.4	346.8	348.7	346.2	2.55	136.987		
700.0	700.0	701.5	698.9	1.4	1.7	-82.28	49.2	341.0	344.6	341.5	3.08	111.807		
800.0	799.8	800.8	796.4	1.6	2.0	-86.33	66.9	334.1	340.4	336.8	3.64	93.539		
900.0	899.5	897.4	890.5	1.8	2.4	-91.26	87.1	326.3	337.7	333.5	4.27	79.165		
948.1	947.4	943.1	934.8	1.9	2.7	-93.80	97.7	322.2	337.4	332.8	4.60	73.384 CC, ES		
1,000.0	999.2	991.8	981.8	2.0	2.9	-96.63	109.7	317.5	337.8	332.9	4.95	68.200		
1,100.0	1,098.8	1,084.0	1,070.0	2.3	3.4	-102.29	134.5	307.9	341.6	336.0	5.68	60.135		
1,200.0	1,198.5	1,175.2	1,156.6	2.5	3.9	-108.11	161.2	297.5	349.9	343.5	6.42	54.465		
1,300.0	1,298.2	1,267.1	1,243.7	2.8	4.5	-113.74	188.4	286.9	362.3	355.2	7.15	50.663		
1,400.0	1,397.8	1,359.0	1,330.9	3.0	5.1	-118.99	215.6	276.3	378.4	370.6	7.84	48.269		
1,500.0	1,497.5	1,450.9	1,418.0	3.3	5.6	-123.83	242.9	265.7	397.8	389.3	8.49	46.873		
1,600.0	1,597.2	1,542.8	1,505.1	3.6	6.2	-128.25	270.1	255.1	420.0	410.9	9.09	46.187		
1,700.0	1,696.8	1,634.7	1,592.3	3.8	6.8	-132.24	297.3	244.5	444.6	435.0	9.67	46.003		
1,800.0	1,796.5	1,726.6	1,679.4	4.1	7.4	-135.85	324.5	233.9	471.3	461.1	10.21	46.172		
1,900.0	1,896.1	1,818.5	1,766.5	4.3	8.0	-139.08	351.7	223.4	499.6	488.9	10.72	46.588		
2,000.0	1,995.8	1,910.4	1,853.7	4.6	8.6	-141.99	378.9	212.8	529.3	518.1	11.22	47.172		
2,100.0	2,095.5	2,002.3	1,940.8	4.9	9.1	-144.60	406.2	202.2	560.3	548.6	11.70	47.868		
2,200.0	2,195.1	2,094.2	2,027.9	5.2	9.7	-146.95	433.4	191.6	592.2	580.0	12.18	48.634		
2,300.0	2,294.8	2,186.1	2,115.1	5.4	10.3	-149.08	460.6	181.0	625.0	612.4	12.64	49.440		
2,400.0	2,394.5	2,278.0	2,202.2	5.7	10.9	-150.99	487.8	170.4	658.5	645.4	13.10	50.265		
2,500.0	2,494.1	2,369.9	2,289.4	6.0	11.5	-152.73	515.0	159.8	692.7	679.1	13.56	51.093		
2,600.0	2,593.8	2,461.8	2,376.5	6.2	12.1	-154.31	542.2	149.2	727.4	713.4	14.01	51.914		
2,700.0	2,693.5	2,553.7	2,463.6	6.5	12.7	-155.75	569.5	138.7	762.5	748.0	14.46	52.718		
2,800.0	2,793.1	2,645.6	2,550.8	6.8	13.3	-157.15	596.7	128.1	797.9	783.0	14.92	53.494		
2,900.0	2,893.0	2,738.6	2,638.9	7.0	13.8	-158.56	624.2	117.4	831.5	816.1	15.36	54.138		
3,000.0	2,992.9	2,832.7	2,728.2	7.2	14.5	-159.76	652.1	106.5	862.1	846.3	15.82	54.490		
3,100.0	3,092.9	2,927.5	2,818.1	7.3	15.1	3.07	680.2	95.6	891.3	869.9	21.33	41.787		
3,200.0	3,192.9	3,022.4	2,908.0	7.5	15.7	2.26	708.3	84.7	920.6	898.4	22.13	41.591		
3,300.0	3,292.9	3,117.2	2,997.9	7.7	16.3	1.50	736.3	73.7	950.0	927.1	22.94	41.412		
3,400.0	3,392.9	3,212.0	3,087.8	7.9	16.9	0.79	764.4	62.8	979.6	955.9	23.75	41.249 SF		

Company:	Synergy Resources	Local Co-ordinate Reference:	Well SRC Kelly Farms 22-4-3CHZ
Project:	SEC.4-T5N-R66W	TVD Reference:	WELL @ 4767.5ft (Ensign Rig #131 - RKB - 13.5')
Reference Site:	SRC Kelly Farms Pad Sec.4-T5N-R66W	MD Reference:	WELL @ 4767.5ft (Ensign Rig #131 - RKB - 13.5')
Site Error:	0.0ft	North Reference:	True
Reference Well:	SRC Kelly Farms 22-4-3CHZ	Survey Calculation Method:	Minimum Curvature
Well Error:	0.0ft	Output errors are at	2.00 sigma
Reference Wellbore	Wellbore #1	Database:	Landmark
Reference Design:	Plan #2 (4-21-14)	Offset TVD Reference:	Offset Datum

Offset Design Northridge Pad Sec.4-T5N-R66W - Northridge 21-4D (Exist.) - Wellbore #1 - Wellbore #1														Offset Site Error: 0.0ft
Survey Program: 150-MWD														Offset Well Error: 0.0ft
Reference	Offset	Semi Major Axis		Distance		Warning								
Measured Depth (ft)	Vertical Depth (ft)	Measured Depth (ft)	Vertical Depth (ft)	Reference (ft)	Offset (ft)	Highside Toolface (°)	Offset Wellbore Centre +N/-S (ft)	+E/-W (ft)	Between Centres (ft)	Between Ellipses (ft)	Minimum Separation (ft)	Separation Factor		
0.0	0.0	0.0	0.0	0.0	0.0	88.66	8.4	356.9	357.3					
100.0	100.0	84.2	84.2	0.1	0.1	88.62	8.6	357.0	357.2	356.9	0.21	1,723.504		
200.0	200.0	184.9	184.8	0.3	0.2	88.44	9.7	357.5	357.6	357.1	0.58	612.568		
300.0	300.0	291.5	291.4	0.6	0.5	87.78	13.8	356.7	357.0	356.0	1.05	338.697		
400.0	400.0	398.0	397.5	0.8	0.8	86.49	21.7	353.5	354.4	352.9	1.54	229.668		
500.0	500.0	501.5	500.5	1.0	1.0	84.81	31.7	348.7	350.5	348.5	2.04	171.477		
600.0	600.0	602.3	600.3	1.2	1.4	82.62	44.4	343.0	346.1	343.6	2.57	134.768		
700.0	700.0	700.7	697.3	1.4	1.7	-84.07	59.4	336.8	342.0	338.9	3.13	109.179		
800.0	799.8	798.5	793.7	1.6	2.1	-87.70	74.6	330.7	338.8	335.1	3.67	92.188		
900.0	899.5	896.4	889.8	1.8	2.5	-92.18	92.0	323.6	336.7	332.4	4.28	78.713		
944.3	943.7	938.8	931.2	1.9	2.6	-94.33	100.6	320.1	336.5	331.9	4.56	73.723 CC, ES		
1,000.0	999.2	991.5	982.4	2.0	2.9	-97.16	112.2	315.4	336.9	332.0	4.94	68.218		
1,100.0	1,098.8	1,086.8	1,074.3	2.3	3.4	-102.67	135.6	305.9	340.3	334.7	5.65	60.195		
1,200.0	1,198.5	1,180.4	1,163.7	2.5	3.9	-108.44	160.7	294.3	346.6	340.2	6.39	54.230		
1,300.0	1,298.2	1,266.4	1,245.0	2.8	4.4	-113.91	186.4	283.0	357.9	350.8	7.10	50.437		
1,400.0	1,397.8	1,353.7	1,327.0	3.0	5.0	-119.29	214.1	271.7	374.7	366.9	7.77	48.204		
1,500.0	1,497.5	1,448.5	1,416.2	3.3	5.5	-124.61	243.8	259.6	395.1	386.7	8.40	47.057		
1,600.0	1,597.2	1,544.3	1,506.5	3.6	6.1	-129.46	273.0	246.8	417.6	408.6	8.96	46.607		
1,700.0	1,696.8	1,639.1	1,596.3	3.8	6.6	-133.73	300.9	234.0	441.7	432.3	9.49	46.557		
1,800.0	1,796.5	1,732.6	1,684.9	4.1	7.2	-137.47	327.9	221.6	467.7	457.7	9.98	46.865		
1,900.0	1,896.1	1,828.7	1,776.4	4.3	7.7	-140.83	354.7	209.4	494.8	484.3	10.46	47.305		
2,000.0	1,995.8	1,923.8	1,867.2	4.6	8.2	-143.72	380.5	197.8	522.7	511.7	10.92	47.864		
2,100.0	2,095.5	2,020.2	1,959.4	4.9	8.7	-146.29	406.0	186.6	551.2	539.8	11.37	48.461		
2,200.0	2,195.1	2,114.2	2,049.6	5.2	9.3	-148.55	430.3	175.5	580.0	568.2	11.82	49.062		
2,300.0	2,294.8	2,205.7	2,137.0	5.4	9.8	-150.65	454.6	163.9	610.2	597.9	12.27	49.747		
2,400.0	2,394.5	2,304.4	2,231.6	5.7	10.3	-152.67	480.1	151.6	640.3	627.6	12.72	50.354		
2,500.0	2,494.1	2,395.1	2,318.7	6.0	10.8	-154.26	503.2	141.4	670.9	657.7	13.15	51.034		
2,600.0	2,593.8	2,479.4	2,399.5	6.2	11.3	-155.63	525.4	131.9	702.8	689.2	13.57	51.803		
2,700.0	2,693.5	2,563.8	2,479.9	6.5	11.7	-156.94	548.8	121.9	736.4	722.4	13.99	52.620		
2,800.0	2,793.1	2,656.5	2,568.2	6.8	12.3	-158.39	574.7	110.2	770.5	756.0	14.44	53.345		
2,900.0	2,893.0	2,737.0	2,644.3	7.0	12.8	-159.73	598.5	99.5	804.1	789.2	14.85	54.135		
3,000.0	2,992.9	2,813.5	2,716.3	7.2	13.3	-160.86	622.4	89.1	836.5	821.3	15.28	54.761		
3,100.0	3,092.9	2,935.6	2,831.4	7.3	14.1	1.59	659.4	73.0	866.6	846.2	20.40	42.481		
3,200.0	3,192.9	3,026.8	2,918.0	7.5	14.6	0.75	685.6	61.1	895.4	874.2	21.14	42.345		
3,300.0	3,292.9	3,111.0	2,997.6	7.7	15.1	0.00	710.8	49.9	925.4	903.5	21.87	42.316		
3,400.0	3,392.9	3,236.4	3,116.5	7.9	15.9	-1.03	746.7	33.5	954.5	931.6	22.82	41.817		
3,500.0	3,492.9	3,338.0	3,213.8	8.0	16.5	-1.73	773.6	21.5	981.4	957.8	23.59	41.600 SF		

Northridge Pad Sec.4-T5N-R66W - Northridge 22-4D (Exist.) - Wellbore #1 - Wellbore #1												Offset Site Error:	0.0 ft
Survey Program: 182-MWD												Offset Well Error:	0.0 ft
Reference		Offset		Semi Major Axis			Distance						Warning
Measured Depth	Vertical Depth	Measured Depth	Vertical Depth	Reference	Offset	Highside Toolface	Offset Wellbore Centre		Between Centres	Between Ellipses	Minimum Separation	Separation Factor	
Depth (ft)	Depth (ft)	Depth (ft)	Depth (ft)	(ft)	(ft)	(°)	+N/-S (ft)	+E/-W (ft)	(ft)	(ft)	(ft)		
0.0	0.0	0.0	0.0	0.0	0.0	95.74	-33.5	333.2	335.2				
100.0	100.0	84.2	84.2	0.1	0.1	95.86	-34.2	333.5	335.2	335.0	0.21	1,584.511	
200.0	200.0	182.0	182.0	0.3	0.2	96.26	-36.7	334.3	336.3	335.7	0.55	610.135	
300.0	300.0	282.3	282.2	0.6	0.4	96.81	-40.0	335.3	337.7	336.7	0.99	342.643	
400.0	400.0	382.8	382.6	0.8	0.6	97.27	-42.9	336.1	338.9	337.5	1.42	239.323	
500.0	500.0	483.4	483.2	1.0	0.9	97.66	-45.3	336.9	340.0	338.1	1.86	182.971	
600.0	600.0	584.1	583.9	1.2	1.1	97.98	-47.3	337.4	340.7	338.4	2.30	148.049	
700.0	700.0	684.3	684.1	1.4	1.3	-65.71	-49.1	338.1	340.9	338.2	2.72	125.385	
800.0	799.8	786.0	785.8	1.6	1.5	-66.33	-50.5	338.3	339.1	336.0	3.12	108.724	
900.0	899.5	886.3	886.1	1.8	1.7	-67.69	-50.0	338.4	336.1	332.5	3.54	95.005	
1,000.0	999.2	988.3	988.1	2.0	1.9	-69.39	-47.8	338.3	332.8	328.8	3.97	83.841	
1,100.0	1,098.8	1,089.9	1,089.6	2.3	2.1	-71.02	-46.2	337.3	328.9	324.5	4.41	74.632	
1,200.0	1,198.5	1,190.1	1,189.8	2.5	2.3	-72.63	-44.7	336.0	325.0	320.1	4.86	66.916	
1,300.0	1,298.2	1,289.8	1,289.5	2.8	2.6	-74.30	-43.2	334.5	321.1	315.8	5.32	60.370	
1,400.0	1,397.8	1,390.0	1,389.7	3.0	2.8	-76.03	-41.5	332.8	317.4	311.6	5.79	54.827	
1,500.0	1,497.5	1,489.0	1,488.6	3.3	3.0	-77.74	-40.1	331.2	313.9	307.7	6.25	50.225	
1,600.0	1,597.2	1,588.4	1,588.0	3.6	3.2	-79.44	-38.9	329.7	310.9	304.2	6.71	46.308	
1,700.0	1,696.8	1,690.6	1,690.2	3.8	3.4	-81.20	-37.9	327.7	307.7	300.5	7.19	42.773	
1,800.0	1,796.5	1,791.6	1,791.1	4.1	3.6	-82.87	-37.6	325.0	304.0	296.3	7.67	39.633	
1,900.0	1,896.1	1,891.0	1,890.6	4.3	3.8	-84.52	-37.4	322.5	300.6	292.4	8.14	36.908	
2,000.0	1,995.8	1,994.1	1,993.6	4.6	4.0	-86.30	-37.3	319.1	296.7	288.1	8.63	34.372	
2,100.0	2,095.5	2,095.9	2,095.2	4.9	4.2	-88.17	-37.0	314.5	292.0	282.9	9.12	32.014	
2,200.0	2,195.1	2,198.8	2,198.1	5.2	4.5	-90.08	-37.2	309.4	287.0	277.4	9.61	29.868	
2,300.0	2,294.8	2,303.3	2,302.3	5.4	4.7	-92.17	-37.6	302.2	280.4	270.3	10.10	27.750	
2,400.0	2,394.5	2,412.5	2,411.0	5.7	5.0	-94.70	-37.9	291.9	271.9	261.3	10.62	25.614	
2,500.0	2,494.1	2,517.9	2,515.6	6.0	5.2	-97.36	-39.3	278.4	260.4	249.2	11.12	23.415	
2,600.0	2,593.8	2,624.5	2,620.7	6.2	5.5	-100.67	-40.7	261.6	246.6	235.0	11.63	21.212	
2,700.0	2,693.5	2,728.9	2,723.2	6.5	5.9	-104.92	-41.4	241.0	230.6	218.5	12.14	18.999	
2,800.0	2,793.1	2,830.4	2,822.2	6.8	6.2	-109.65	-43.0	219.1	213.8	201.2	12.64	16.911	
2,900.0	2,893.0	2,934.2	2,922.9	7.0	6.6	-114.49	-46.3	193.9	194.5	181.4	13.12	14.829	
3,000.0	2,992.9	3,031.9	3,016.9	7.2	7.0	-119.57	-49.9	167.6	172.9	159.3	13.59	12.718	
3,100.0	3,092.9	3,126.6	3,108.2	7.3	7.4	38.39	-53.5	143.1	152.7	138.8	13.84	11.032	
3,200.0	3,192.9	3,222.5	3,201.0	7.5	7.7	30.97	-56.5	118.7	135.2	120.9	14.28	9.468	
3,300.0	3,292.9	3,317.4	3,292.2	7.7	8.1	20.68	-57.7	92.8	121.7	107.1	14.68	8.292	
3,400.0	3,392.9	3,414.6	3,386.3	7.9	8.5	9.42	-58.9	68.6	113.9	98.8	15.05	7.567	
3,500.0	3,492.9	3,512.9	3,481.8	8.0	9.0	-2.62	-61.6	45.0	109.5	94.1	15.44	7.094	
3,539.7	3,532.7	3,551.6	3,519.2	8.1	9.1	-7.69	-62.9	35.4	109.1	93.5	15.62	6.984 CC, ES	
3,600.0	3,592.9	3,609.0	3,574.6	8.2	9.4	-15.47	-64.7	20.6	110.4	94.5	15.94	6.927 SF	
3,700.0	3,692.9	3,704.8	3,666.7	8.4	9.9	-28.24	-67.4	-5.6	118.3	101.7	16.59	7.127	
3,800.0	3,792.9	3,801.1	3,759.1	8.6	10.4	-39.50	-70.8	-32.6	131.4	114.1	17.37	7.566	
3,900.0	3,892.9	3,895.3	3,849.1	8.8	10.9	-48.79	-74.7	-59.9	149.3	131.1	18.21	8.198	
4,000.0	3,992.9	3,989.6	3,939.0	9.0	11.4	-56.19	-78.3	-88.4	171.5	152.4	19.05	8.999	
4,100.0	4,092.9	4,090.7	4,035.6	9.1	11.9	-62.08	-82.0	-118.0	195.1	175.2	19.89	9.807	
4,200.0	4,192.9	4,193.0	4,134.4	9.3	12.4	-66.39	-86.2	-144.1	216.6	195.9	20.65	10.485	
4,300.0	4,292.9	4,295.9	4,234.6	9.5	12.8	-69.56	-89.9	-167.6	236.5	215.1	21.36	11.069	
4,400.0	4,392.9	4,400.3	4,336.7	9.7	13.2	-71.99	-93.5	-188.5	254.4	232.3	22.03	11.546	
4,500.0	4,492.9	4,502.4	4,437.2	9.9	13.6	-73.78	-96.3	-206.7	270.7	248.0	22.65	11.953	
4,600.0	4,592.9	4,611.0	4,544.4	10.1	14.0	-75.20	-98.8	-223.2	284.8	261.5	23.24	12.254	
4,700.0	4,692.9	4,720.4	4,653.2	10.3	14.3	-76.13	-100.6	-235.3	295.0	271.3	23.77	12.410	
4,800.0	4,792.9	4,827.1	4,759.6	10.5	14.5	-76.55	-100.7	-244.0	302.9	278.7	24.25	12.493	
4,900.0	4,892.9	4,935.3	4,867.6	10.7	14.7	-76.52	-99.2	-249.4	308.1	283.4	24.68	12.485	

Company:	Synergy Resources	Local Co-ordinate Reference:	Well SRC Kelly Farms 22-4-3CHZ
Project:	SEC.4-T5N-R66W	TVD Reference:	WELL @ 4767.5ft (Ensign Rig #131 - RKB - 13.5')
Reference Site:	SRC Kelly Farms Pad Sec.4-T5N-R66W	MD Reference:	WELL @ 4767.5ft (Ensign Rig #131 - RKB - 13.5')
Site Error:	0.0ft	North Reference:	True
Reference Well:	SRC Kelly Farms 22-4-3CHZ	Survey Calculation Method:	Minimum Curvature
Well Error:	0.0ft	Output errors are at	2.00 sigma
Reference Wellbore	Wellbore #1	Database:	Landmark
Reference Design:	Plan #2 (4-21-14)	Offset TVD Reference:	Offset Datum

Offset Design Northridge Pad Sec.4-T5N-R66W - Northridge 22-4D (Exist.) - Wellbore #1 - Wellbore #1													Offset Site Error:	0.0 ft
Survey Program: 182-MWD													Offset Well Error:	0.0 ft
Reference	Offset	Semi Major Axis		Distance		Warning								
Measured Depth (ft)	Vertical Depth (ft)	Measured Depth (ft)	Vertical Depth (ft)	Reference (ft)	Offset (ft)	Highside Toolface (°)	Offset Wellbore Centre +N/-S (ft)	+E/-W (ft)	Between Centres (ft)	Between Ellipses (ft)	Minimum Separation (ft)	Separation Factor		
5,000.0	4,992.9	5,040.2	4,972.5	10.9	14.9	-76.48	-98.3	-252.3	311.0	286.0	25.07	12.405		
5,100.0	5,092.9	5,141.8	5,074.0	11.1	15.1	-76.50	-97.9	-254.3	313.0	287.5	25.45	12.296		
5,200.0	5,192.9	5,242.9	5,175.1	11.3	15.2	-76.54	-97.8	-255.9	314.5	288.7	25.83	12.176		
5,300.0	5,292.9	5,343.6	5,275.8	11.5	15.4	-76.60	-97.8	-257.2	315.8	289.6	26.21	12.049		
5,400.0	5,392.9	5,445.4	5,377.6	11.7	15.6	-76.72	-98.3	-258.2	316.7	290.1	26.59	11.912		
5,500.0	5,492.9	5,546.8	5,479.0	11.9	15.7	-76.91	-99.2	-258.8	317.0	290.1	26.96	11.757		
5,600.0	5,592.9	5,647.7	5,579.8	12.1	15.9	-77.15	-100.5	-259.1	317.0	289.7	27.34	11.595		
5,700.0	5,692.9	5,748.0	5,680.2	12.3	16.0	-77.38	-101.8	-259.2	316.8	289.1	27.71	11.432		
5,800.0	5,792.9	5,848.1	5,780.2	12.5	16.2	-77.59	-103.0	-259.2	316.6	288.5	28.09	11.272		
5,900.0	5,892.9	5,947.5	5,879.6	12.7	16.3	-77.80	-104.1	-259.3	316.4	287.9	28.46	11.117		
5,925.9	5,918.9	5,973.2	5,905.4	12.8	16.4	-77.85	-104.4	-259.3	316.4	287.8	28.56	11.078		
6,000.0	5,992.9	6,047.4	5,979.5	12.9	16.5	-78.00	-105.2	-259.5	316.4	287.6	28.84	10.971		
6,100.0	6,092.9	6,147.7	6,079.8	13.2	16.7	-78.24	-106.5	-259.7	316.3	287.1	29.22	10.825		
6,200.0	6,192.9	6,247.9	6,180.0	13.4	16.8	-78.49	-107.9	-259.8	316.2	286.6	29.61	10.680		
6,300.0	6,292.9	6,347.9	6,280.0	13.6	17.0	-78.79	-109.5	-260.0	316.0	286.0	29.99	10.537		
6,400.0	6,392.9	6,449.0	6,381.1	13.8	17.2	-79.16	-111.6	-260.1	315.7	285.3	30.38	10.392		
6,497.9	6,490.8	6,545.3	6,477.3	14.0	17.3	-79.56	-113.9	-260.0	315.2	284.5	30.76	10.249		
6,500.0	6,492.9	6,547.3	6,479.4	14.0	17.3	-79.57	-113.9	-260.0	315.2	284.5	30.77	10.246		
6,600.0	6,592.7	6,643.8	6,575.9	14.2	17.5	-170.12	-116.1	-261.0	321.1	292.7	28.35	11.327		
6,700.0	6,690.8	6,741.0	6,673.0	14.4	17.7	-170.83	-118.4	-262.6	341.0	313.0	28.04	12.164		
6,800.0	6,785.3	6,834.5	6,766.4	14.7	17.8	-171.60	-120.6	-264.3	374.5	347.2	27.32	13.707		
6,900.0	6,874.4	6,922.0	6,853.9	15.1	18.0	-172.29	-122.7	-265.9	420.8	394.6	26.24	16.036		
7,000.0	6,956.2	7,001.7	6,933.6	15.5	18.2	-172.83	-124.8	-267.5	479.2	454.4	24.86	19.279		
7,100.0	7,029.4	7,072.8	7,004.7	16.1	18.3	-173.14	-126.9	-269.1	548.5	525.3	23.27	23.575		
7,200.0	7,092.3	7,133.3	7,065.1	17.0	18.4	-173.11	-128.7	-270.5	627.2	605.6	21.61	29.031		
7,300.0	7,143.8	7,181.6	7,113.4	18.2	18.5	-172.51	-130.2	-271.7	713.8	693.8	20.08	35.546		
7,400.0	7,182.9	7,217.4	7,149.1	19.7	18.6	-170.80	-131.3	-272.7	806.6	787.5	19.05	42.330		
7,500.0	7,208.8	7,241.0	7,172.7	21.5	18.6	-165.58	-132.0	-273.3	903.6	884.0	19.61	46.078		

Company:	Synergy Resources	Local Co-ordinate Reference:	Well SRC Kelly Farms 22-4-3CHZ
Project:	SEC.4-T5N-R66W	TVD Reference:	WELL @ 4767.5ft (Ensign Rig #131 - RKB - 13.5')
Reference Site:	SRC Kelly Farms Pad Sec.4-T5N-R66W	MD Reference:	WELL @ 4767.5ft (Ensign Rig #131 - RKB - 13.5')
Site Error:	0.0ft	North Reference:	True
Reference Well:	SRC Kelly Farms 22-4-3CHZ	Survey Calculation Method:	Minimum Curvature
Well Error:	0.0ft	Output errors are at	2.00 sigma
Reference Wellbore	Wellbore #1	Database:	Landmark
Reference Design:	Plan #2 (4-21-14)	Offset TVD Reference:	Offset Datum

Offset Design Northridge Pad Sec.4-T5N-R66W - Northridge 4AD (Exist.) - Wellbore #1 - Wellbore #1													Offset Site Error:	0.0ft
Survey Program: 182-MWD													Offset Well Error:	0.0ft
Reference		Offset		Semi Major Axis			Distance							Warning
Measured Depth (ft)	Vertical Depth (ft)	Measured Depth (ft)	Vertical Depth (ft)	Reference (ft)	Offset (ft)	Highside Toolface (°)	Offset Wellbore Centre +N/-S (ft)	+E/-W (ft)	Between Centres (ft)	Between Ellipses (ft)	Minimum Separation (ft)	Separation Factor		
0.0	0.0	0.0	0.0	0.0	0.0	92.06	-12.4	345.2	345.7					
100.0	100.0	87.2	87.2	0.1	0.1	92.05	-12.3	345.0	345.2	345.0	0.21	1,638.639		
200.0	200.0	188.5	188.5	0.3	0.2	92.01	-12.1	344.2	344.5	343.9	0.56	620.211		
248.4	248.4	233.9	233.9	0.4	0.3	91.99	-11.9	344.0	344.2	343.5	0.76	455.363		
300.0	300.0	283.2	283.2	0.6	0.4	91.96	-11.8	344.3	344.5	343.5	0.97	354.431		
400.0	400.0	388.6	388.6	0.8	0.6	92.01	-12.1	344.1	344.4	342.9	1.42	243.268		
500.0	500.0	490.9	490.9	1.0	0.9	92.00	-12.0	342.6	342.9	341.0	1.86	184.206		
600.0	600.0	589.4	589.4	1.2	1.1	91.83	-10.9	341.5	341.7	339.4	2.29	149.123		
700.0	700.0	690.9	690.9	1.4	1.3	-72.09	-11.5	340.0	339.7	337.0	2.70	125.796		
800.0	799.8	793.7	793.6	1.6	1.5	-72.89	-12.2	338.1	336.3	333.1	3.11	108.254		
900.0	899.5	892.5	892.4	1.8	1.7	-74.25	-12.0	335.7	331.5	328.0	3.52	94.199		
1,000.0	999.2	1,002.4	1,002.2	2.0	1.9	-76.03	-10.7	331.7	325.8	321.9	3.98	81.926		
1,100.0	1,098.8	1,115.7	1,115.0	2.3	2.2	-78.26	-7.8	322.2	315.7	311.2	4.47	70.610		
1,200.0	1,198.5	1,214.4	1,213.1	2.5	2.5	-80.88	-2.6	312.5	304.8	299.9	4.94	61.698		
1,300.0	1,298.2	1,321.4	1,319.2	2.8	2.8	-84.21	4.3	300.1	293.2	287.7	5.45	53.771		
1,400.0	1,397.8	1,424.9	1,421.1	3.0	3.1	-88.31	13.0	284.2	279.2	273.2	5.99	46.589		
1,500.0	1,497.5	1,526.8	1,520.9	3.3	3.4	-93.36	24.0	266.7	265.7	259.2	6.57	40.462		
1,600.0	1,597.2	1,628.5	1,620.2	3.6	3.8	-98.67	32.9	247.2	251.7	244.5	7.18	35.069		
1,700.0	1,696.8	1,726.4	1,715.4	3.8	4.2	-104.83	42.8	226.3	238.8	230.9	7.84	30.466		
1,800.0	1,796.5	1,824.0	1,809.9	4.1	4.7	-111.84	53.2	204.2	228.3	219.7	8.54	26.731		
1,900.0	1,896.1	1,917.8	1,900.7	4.3	5.1	-119.02	62.8	182.9	221.1	211.9	9.23	23.963		
1,999.3	1,995.1	2,011.6	1,991.4	4.6	5.5	-126.71	73.4	161.3	218.8	208.9	9.93	22.023 CC		
2,000.0	1,995.8	2,012.2	1,992.0	4.6	5.5	-126.76	73.5	161.1	218.8	208.9	9.94	22.012 ES		
2,100.0	2,095.5	2,105.5	2,081.6	4.9	6.0	-134.90	85.4	138.3	221.5	210.9	10.66	20.778		
2,200.0	2,195.1	2,194.9	2,167.0	5.2	6.5	-142.75	98.4	115.4	230.4	219.0	11.34	20.320 SF		
2,300.0	2,294.8	2,288.4	2,255.9	5.4	7.1	-150.58	113.5	90.5	245.4	233.4	11.98	20.488		
2,400.0	2,394.5	2,382.4	2,345.2	5.7	7.6	-157.61	128.2	65.1	264.3	251.8	12.53	21.095		
2,500.0	2,494.1	2,476.5	2,434.9	6.0	8.1	-163.62	142.5	40.1	286.3	273.3	13.02	21.985		
2,600.0	2,593.8	2,563.0	2,517.0	6.2	8.6	-168.41	156.1	17.0	311.8	298.3	13.49	23.106		
2,700.0	2,693.5	2,653.5	2,602.7	6.5	9.2	-172.70	172.1	-7.3	341.1	327.1	13.96	24.441		
2,800.0	2,793.1	2,745.7	2,689.9	6.8	9.7	-176.51	188.2	-32.6	371.9	357.5	14.43	25.780		
2,900.0	2,893.0	2,839.0	2,777.6	7.0	10.3	179.89	203.9	-60.4	401.7	386.8	14.90	26.966		
3,000.0	2,992.9	2,944.9	2,877.6	7.2	11.0	176.47	220.7	-91.2	428.4	413.0	15.38	27.852		
3,100.0	3,092.9	3,041.4	2,969.5	7.3	11.6	-22.37	234.6	-116.9	451.9	434.6	17.31	26.101		
3,200.0	3,192.9	3,129.3	3,052.9	7.5	12.1	-24.53	247.7	-141.1	477.1	459.0	18.08	26.385		
3,300.0	3,292.9	3,233.2	3,151.8	7.7	12.7	-26.65	264.3	-168.5	503.2	484.3	18.93	26.581		
3,400.0	3,392.9	3,349.7	3,263.5	7.9	13.4	-28.84	279.1	-197.8	526.5	506.7	19.81	26.572		
3,500.0	3,492.9	3,445.6	3,356.0	8.0	13.9	-30.47	290.0	-221.2	548.7	528.2	20.55	26.707		
3,600.0	3,592.9	3,548.8	3,455.5	8.2	14.4	-32.10	300.9	-246.0	570.4	549.1	21.31	26.768		
3,700.0	3,692.9	3,642.4	3,545.9	8.4	14.9	-33.37	311.2	-267.6	592.4	570.4	22.01	26.916		
3,800.0	3,792.9	3,731.4	3,631.9	8.6	15.3	-34.51	321.3	-288.6	615.2	592.5	22.70	27.098		
3,900.0	3,892.9	3,805.0	3,702.5	8.8	15.8	-35.38	331.4	-306.8	640.8	617.5	23.33	27.463		
4,000.0	3,992.9	3,878.7	3,772.5	9.0	16.2	-36.17	343.6	-326.3	669.9	645.9	24.02	27.893		
4,100.0	4,092.9	3,956.9	3,846.0	9.1	16.7	-36.97	358.2	-348.4	701.9	677.2	24.76	28.345		
4,200.0	4,192.9	4,043.6	3,927.1	9.3	17.4	-37.82	375.3	-374.0	735.8	710.2	25.60	28.741		
4,300.0	4,292.9	4,159.9	4,036.0	9.5	18.1	-38.89	397.3	-408.4	769.3	742.7	26.63	28.886		
4,400.0	4,392.9	4,274.0	4,144.5	9.7	18.8	-39.85	414.9	-439.0	798.3	770.7	27.55	28.970		
4,500.0	4,492.9	4,352.1	4,218.7	9.9	19.3	-40.52	426.4	-460.5	827.6	799.3	28.26	29.281		
4,600.0	4,592.9	4,450.1	4,311.1	10.1	20.0	-41.28	442.7	-488.8	859.3	830.2	29.13	29.505		
4,700.0	4,692.9	4,527.0	4,383.6	10.3	20.5	-41.78	456.2	-510.4	891.3	861.4	29.85	29.857		
4,800.0	4,792.9	4,606.0	4,457.6	10.5	21.0	-42.30	470.9	-534.1	925.3	894.7	30.62	30.214		

CC - Min centre to center distance or convergent point, SF - min separation factor, ES - min ellipse separation

Company:	Synergy Resources	Local Co-ordinate Reference:	Well SRC Kelly Farms 22-4-3CHZ
Project:	SEC.4-T5N-R66W	TVD Reference:	WELL @ 4767.5ft (Ensign Rig #131 - RKB - 13.5')
Reference Site:	SRC Kelly Farms Pad Sec.4-T5N-R66W	MD Reference:	WELL @ 4767.5ft (Ensign Rig #131 - RKB - 13.5')
Site Error:	0.0ft	North Reference:	True
Reference Well:	SRC Kelly Farms 22-4-3CHZ	Survey Calculation Method:	Minimum Curvature
Well Error:	0.0ft	Output errors are at	2.00 sigma
Reference Wellbore	Wellbore #1	Database:	Landmark
Reference Design:	Plan #2 (4-21-14)	Offset TVD Reference:	Offset Datum

Offset Design Northridge Pad Sec.4-T5N-R66W - Northridge 4AD (Exist.) - Wellbore #1 - Wellbore #1													Offset Site Error: 0.0 ft	
Survey Program: 182-MWD													Offset Well Error: 0.0 ft	
Reference		Offset		Semi Major Axis			Distance						Warning	
Measured Depth (ft)	Vertical Depth (ft)	Measured Depth (ft)	Vertical Depth (ft)	Reference (ft)	Offset (ft)	Highside Toolface (°)	Offset Wellbore Centre +N/-S (ft)	+E/-W (ft)	Between Centres (ft)	Between Ellipses (ft)	Minimum Separation (ft)	Separation Factor		
4,900.0	4,892.9	4,702.2	4,547.0	10.7	21.7	-43.06	487.4	-565.3	960.2	928.7	31.55	30.439		
5,000.0	4,992.9	4,805.1	4,643.4	10.9	22.4	-43.63	506.5	-595.8	994.2	961.7	32.47	30.616		

Company:	Synergy Resources	Local Co-ordinate Reference:	Well SRC Kelly Farms 22-4-3CHZ
Project:	SEC.4-T5N-R66W	TVD Reference:	WELL @ 4767.5ft (Ensign Rig #131 - RKB - 13.5')
Reference Site:	SRC Kelly Farms Pad Sec.4-T5N-R66W	MD Reference:	WELL @ 4767.5ft (Ensign Rig #131 - RKB - 13.5')
Site Error:	0.0ft	North Reference:	True
Reference Well:	SRC Kelly Farms 22-4-3CHZ	Survey Calculation Method:	Minimum Curvature
Well Error:	0.0ft	Output errors are at	2.00 sigma
Reference Wellbore	Wellbore #1	Database:	Landmark
Reference Design:	Plan #2 (4-21-14)	Offset TVD Reference:	Offset Datum

Offset Design Northridge Pad Sec.4-T5N-R66W - Northridge 4KD (Exist.) - Wellbore #1 - Wellbore #1													Offset Site Error: 0.0ft
Survey Program: 124-MWD													Offset Well Error: 0.0ft
Reference	Offset	Semi Major Axis			Distance								Warning
Measured Depth (ft)	Vertical Depth (ft)	Measured Depth (ft)	Vertical Depth (ft)	Reference (ft)	Offset (ft)	Highside Toolface (°)	Offset Wellbore Centre +N/-S (ft)	+E/-W (ft)	Between Centres (ft)	Between Ellipses (ft)	Minimum Separation (ft)	Separation Factor	
0.0	0.0	0.0	0.0	0.0	0.0	97.67	-44.1	327.4	330.6				
100.0	100.0	89.2	89.2	0.1	0.1	97.61	-43.7	327.1	330.0	329.8	0.21	1,545.856	
200.0	200.0	192.1	192.0	0.3	0.3	97.46	-42.7	325.9	328.7	328.1	0.63	525.374	
300.0	300.0	297.8	297.8	0.6	0.5	97.39	-41.9	323.3	326.2	325.2	1.08	300.904	
400.0	400.0	402.9	402.8	0.8	0.8	97.48	-41.9	318.9	322.0	320.5	1.55	207.986	
500.0	500.0	524.0	523.3	1.0	1.2	98.07	-43.7	308.2	313.4	311.3	2.09	149.662	
600.0	600.0	633.4	631.5	1.2	1.7	99.21	-47.4	292.3	299.5	296.8	2.68	111.687	
700.0	700.0	733.3	729.8	1.4	2.2	-63.35	-53.4	275.8	283.4	280.3	3.12	90.901	
800.0	799.8	832.1	826.9	1.6	2.7	-62.28	-61.5	259.2	266.1	262.4	3.67	72.590	
900.0	899.5	937.4	929.3	1.8	3.4	-60.23	-74.1	238.7	245.8	241.4	4.38	56.081	
1,000.0	999.2	1,039.2	1,027.8	2.0	4.2	-57.41	-86.8	215.9	223.1	217.9	5.22	42.735	
1,100.0	1,098.8	1,136.1	1,120.9	2.3	5.0	-53.53	-100.4	192.5	199.9	193.7	6.18	32.334	
1,200.0	1,198.5	1,230.9	1,211.5	2.5	5.8	-48.06	-116.1	169.3	178.4	171.1	7.33	24.349	
1,300.0	1,298.2	1,328.6	1,304.2	2.8	6.6	-40.26	-134.1	144.7	159.4	150.8	8.63	18.473	
1,400.0	1,397.8	1,424.3	1,395.3	3.0	7.3	-31.39	-149.5	120.0	142.0	132.2	9.84	14.437	
1,500.0	1,497.5	1,518.8	1,485.6	3.3	8.0	-20.98	-165.5	96.9	130.4	119.4	11.01	11.842	
1,600.0	1,597.2	1,614.2	1,576.5	3.6	8.8	-8.86	-182.1	73.2	124.6	112.6	12.04	10.354	
1,634.9	1,632.0	1,647.5	1,608.3	3.6	9.0	-4.57	-187.9	65.3	124.2	111.9	12.31	10.090 CC, ES	
1,700.0	1,696.8	1,710.0	1,668.0	3.8	9.5	3.44	-198.8	50.3	125.5	112.8	12.70	9.889 SF	
1,800.0	1,796.5	1,806.0	1,759.5	4.1	10.3	15.42	-215.7	26.5	132.6	119.6	13.03	10.176	
1,900.0	1,896.1	1,903.1	1,851.8	4.3	11.2	26.56	-232.1	1.1	144.7	131.7	13.07	11.078	
2,000.0	1,995.8	2,000.1	1,944.0	4.6	12.0	36.18	-247.1	-25.0	160.6	147.7	12.88	12.467	
2,100.0	2,095.5	2,094.1	2,033.7	4.9	12.7	43.28	-261.9	-48.8	179.7	166.9	12.77	14.066	
2,200.0	2,195.1	2,191.8	2,126.7	5.2	13.5	49.22	-277.9	-74.0	201.7	189.0	12.71	15.871	
2,300.0	2,294.8	2,285.8	2,216.6	5.4	14.2	53.50	-293.5	-96.7	224.6	211.8	12.77	17.593	
2,400.0	2,394.5	2,384.4	2,310.7	5.7	15.0	57.07	-310.4	-120.6	249.0	236.0	12.92	19.276	
2,500.0	2,494.1	2,484.2	2,406.3	6.0	15.8	60.57	-324.6	-145.6	272.6	259.5	13.10	20.809	
2,600.0	2,593.8	2,579.0	2,497.2	6.2	16.5	63.30	-338.1	-168.7	296.6	283.2	13.37	22.182	
2,700.0	2,693.5	2,671.1	2,585.4	6.5	17.2	65.20	-353.2	-190.5	321.9	308.1	13.72	23.452	
2,800.0	2,793.1	2,765.7	2,675.7	6.8	18.0	67.37	-367.6	-215.0	348.5	334.4	14.09	24.725	
2,900.0	2,893.0	2,853.5	2,759.1	7.0	18.8	69.48	-380.1	-239.3	377.4	362.9	14.41	26.187	
3,000.0	2,992.9	2,957.4	2,857.7	7.2	19.7	71.13	-395.1	-268.5	408.0	393.2	14.81	27.549	
3,100.0	3,092.9	3,037.9	2,934.1	7.3	20.4	-124.57	-406.2	-291.3	439.3	412.2	27.06	16.230	
3,200.0	3,192.9	3,127.9	3,018.7	7.5	21.3	-124.06	-420.2	-318.7	473.1	445.0	28.12	16.825	
3,300.0	3,292.9	3,237.9	3,122.4	7.7	22.3	-123.42	-435.9	-351.5	506.0	476.7	29.28	17.279	
3,400.0	3,392.9	3,326.7	3,206.6	7.9	23.0	-122.92	-447.6	-377.2	537.4	507.2	30.24	17.771	
3,500.0	3,492.9	3,411.7	3,286.9	8.0	23.8	-122.61	-460.4	-402.2	570.4	539.1	31.25	18.252	
3,600.0	3,592.9	3,521.8	3,390.8	8.2	24.8	-122.35	-477.7	-434.2	603.4	571.0	32.44	18.602	
3,700.0	3,692.9	3,620.7	3,484.7	8.4	25.6	-121.86	-489.7	-462.7	634.3	600.9	33.45	18.966	
3,800.0	3,792.9	3,733.2	3,592.3	8.6	26.5	-121.13	-499.6	-494.1	662.6	628.1	34.53	19.192	
3,900.0	3,892.9	3,807.0	3,662.3	8.8	27.2	-120.79	-508.2	-515.8	693.5	658.1	35.35	19.617	
4,000.0	3,992.9	3,859.3	3,711.2	9.0	27.7	-120.58	-515.5	-533.0	728.4	692.2	36.13	20.160	
4,100.0	4,092.9	3,934.0	3,780.0	9.1	28.6	-120.20	-526.0	-560.0	766.7	729.5	37.18	20.623	
4,200.0	4,192.9	4,018.3	3,857.4	9.3	29.6	-119.77	-537.8	-591.4	806.0	767.6	38.37	21.005	
4,300.0	4,292.9	4,091.5	3,924.0	9.5	30.4	-119.51	-549.8	-619.1	847.0	807.6	39.45	21.473	
4,400.0	4,392.9	4,194.3	4,017.5	9.7	31.6	-119.24	-567.4	-658.0	888.5	847.7	40.83	21.763	
4,500.0	4,492.9	4,326.8	4,139.7	9.9	33.0	-118.89	-587.7	-705.2	927.0	884.6	42.37	21.880	
4,600.0	4,592.9	4,415.0	4,221.8	10.1	33.8	-118.66	-599.9	-734.9	963.3	919.8	43.46	22.166	

Company:	Synergy Resources	Local Co-ordinate Reference:	Well SRC Kelly Farms 22-4-3CHZ
Project:	SEC.4-T5N-R66W	TVD Reference:	WELL @ 4767.5ft (Ensign Rig #131 - RKB - 13.5')
Reference Site:	SRC Kelly Farms Pad Sec.4-T5N-R66W	MD Reference:	WELL @ 4767.5ft (Ensign Rig #131 - RKB - 13.5')
Site Error:	0.0ft	North Reference:	True
Reference Well:	SRC Kelly Farms 22-4-3CHZ	Survey Calculation Method:	Minimum Curvature
Well Error:	0.0ft	Output errors are at	2.00 sigma
Reference Wellbore	Wellbore #1	Database:	Landmark
Reference Design:	Plan #2 (4-21-14)	Offset TVD Reference:	Offset Datum

Offset Design Northridge Pad Sec.4-T5N-R66W - Northridge 4ND (Exist.) - Northridge 4ND - Northridge 4ND													Offset Site Error:	0.0ft
Survey Program: 0-MWD													Offset Well Error:	0.0ft
Reference	Offset	Semi Major Axis			Distance									
Measured Depth (ft)	Vertical Depth (ft)	Measured Depth (ft)	Vertical Depth (ft)	Reference (ft)	Offset (ft)	Highside Toolface (°)	Offset Wellbore Centre +N/-S (ft)	+E/-W (ft)	Between Centres (ft)	Between Ellipses (ft)	Minimum Separation (ft)	Separation Factor	Warning	
0.0	0.0	0.0	0.0	0.0	0.0	76.17	100.9	410.1	422.6					
100.0	100.0	85.5	85.5	0.1	0.1	76.17	100.9	410.1	422.3	422.1	0.21	2,025.447		
200.0	200.0	185.5	185.5	0.3	0.3	76.17	100.9	410.1	422.3	421.7	0.64	658.096		
300.0	300.0	285.5	285.5	0.6	0.5	76.17	100.9	410.1	422.3	421.2	1.09	386.996		
400.0	400.0	385.5	385.5	0.8	0.8	76.17	100.9	410.1	422.3	420.8	1.54	274.087		
500.0	500.0	485.5	485.5	1.0	1.0	76.17	100.9	410.1	422.3	420.3	1.99	212.181		
600.0	600.0	585.5	585.5	1.2	1.2	76.17	100.9	410.1	422.3	419.9	2.44	173.087		
700.0	700.0	685.5	685.5	1.4	1.4	-87.76	100.9	410.1	422.2	419.4	2.86	147.540		
800.0	799.8	785.3	785.3	1.6	1.7	-88.48	100.9	410.1	422.1	418.8	3.27	129.058		
900.0	899.5	885.0	885.0	1.8	1.9	-89.56	100.9	410.1	421.9	418.2	3.70	114.017		
939.8	939.1	924.6	924.6	1.9	2.0	-90.00	100.9	410.1	421.9	418.0	3.88	108.792 CC		
1,000.0	999.2	984.7	984.7	2.0	2.1	-90.67	100.9	410.1	421.9	417.8	4.15	101.725		
1,100.0	1,098.8	1,084.3	1,084.3	2.3	2.3	-91.78	100.9	410.1	422.1	417.5	4.61	91.624		
1,200.0	1,198.5	1,184.0	1,184.0	2.5	2.5	-92.89	100.9	410.1	422.5	417.4	5.07	83.247 ES		
1,300.0	1,298.2	1,283.7	1,283.7	2.8	2.8	-93.99	100.9	410.1	422.9	417.4	5.55	76.229		
1,400.0	1,397.8	1,383.3	1,383.3	3.0	3.0	-95.10	100.9	410.1	423.6	417.6	6.03	70.289		
1,500.0	1,497.5	1,483.0	1,483.0	3.3	3.2	-96.20	100.9	410.1	424.4	417.9	6.51	65.215		
1,600.0	1,597.2	1,582.7	1,582.7	3.6	3.4	-97.29	100.9	410.1	425.4	418.4	6.99	60.842		
1,700.0	1,696.8	1,682.3	1,682.3	3.8	3.7	-98.38	100.9	410.1	426.5	419.0	7.48	57.043		
1,800.0	1,796.5	1,782.0	1,782.0	4.1	3.9	-99.46	100.9	410.1	427.8	419.8	7.96	53.719		
1,900.0	1,896.1	1,881.6	1,881.6	4.3	4.1	-100.54	100.9	410.1	429.2	420.8	8.45	50.791		
2,000.0	1,995.8	1,981.3	1,981.3	4.6	4.3	-101.61	100.9	410.1	430.8	421.8	8.94	48.197		
2,100.0	2,095.5	2,076.8	2,076.8	4.9	4.6	-102.75	101.9	409.9	432.9	423.5	9.42	45.979		
2,200.0	2,195.1	2,170.7	2,170.6	5.2	4.8	-104.23	105.9	409.4	436.4	426.6	9.89	44.143		
2,300.0	2,294.8	2,263.7	2,263.3	5.4	5.0	-106.03	112.9	408.4	441.7	431.3	10.36	42.647		
2,400.0	2,394.5	2,355.7	2,354.7	5.7	5.2	-108.11	122.8	407.0	448.8	438.0	10.82	41.462		
2,500.0	2,494.1	2,446.4	2,444.6	6.0	5.4	-110.41	135.3	405.3	458.1	446.8	11.29	40.568		
2,600.0	2,593.8	2,535.8	2,532.7	6.2	5.6	-112.88	150.4	403.2	469.9	458.2	11.76	39.948		
2,700.0	2,693.5	2,623.7	2,618.8	6.5	5.9	-115.47	167.9	400.8	484.5	472.2	12.24	39.590		
2,800.0	2,793.1	2,713.3	2,706.1	6.8	6.1	-118.27	188.2	397.9	501.7	489.0	12.71	39.465		
2,900.0	2,893.0	2,809.1	2,799.2	7.0	6.5	-121.10	210.5	394.9	519.3	506.2	13.15	39.489		
3,000.0	2,992.9	2,905.9	2,893.2	7.2	6.8	-123.45	233.0	391.7	536.0	522.4	13.60	39.417		
3,100.0	3,092.9	3,003.1	2,987.7	7.3	7.1	38.44	255.6	388.6	552.1	538.4	13.76	40.127		
3,200.0	3,192.9	3,100.3	3,082.2	7.5	7.5	36.75	278.2	385.5	568.8	554.6	14.27	39.851		
3,300.0	3,292.9	3,197.5	3,176.6	7.7	7.9	35.16	300.8	382.3	586.0	571.2	14.80	39.585		
3,400.0	3,392.9	3,294.7	3,271.1	7.9	8.3	33.66	323.4	379.2	603.6	588.2	15.35	39.328		
3,500.0	3,492.9	3,391.9	3,365.6	8.0	8.7	32.24	346.0	376.0	621.5	605.6	15.90	39.081		
3,600.0	3,592.9	3,489.1	3,460.1	8.2	9.1	30.90	368.6	372.9	639.9	623.4	16.47	38.844		
3,700.0	3,692.9	3,586.3	3,554.6	8.4	9.5	29.63	391.2	369.8	658.5	641.5	17.05	38.617		
3,800.0	3,792.9	3,683.5	3,649.1	8.6	9.9	28.43	413.8	366.6	677.5	659.8	17.64	38.399		
3,900.0	3,892.9	3,780.7	3,743.6	8.8	10.3	27.30	436.4	363.5	696.7	678.4	18.24	38.192		
4,000.0	3,992.9	3,877.9	3,838.1	9.0	10.8	26.23	459.0	360.3	716.2	697.3	18.85	37.995		
4,100.0	4,092.9	3,975.1	3,932.6	9.1	11.2	25.21	481.6	357.2	735.9	716.4	19.46	37.807		
4,200.0	4,192.9	4,072.3	4,027.1	9.3	11.6	24.24	504.2	354.1	755.8	735.7	20.09	37.629		
4,300.0	4,292.9	4,169.5	4,121.6	9.5	12.1	23.33	526.8	350.9	775.9	755.2	20.71	37.460		
4,400.0	4,392.9	4,266.7	4,216.0	9.7	12.5	22.46	549.4	347.8	796.2	774.9	21.35	37.299		
4,500.0	4,492.9	4,363.9	4,310.5	9.9	12.9	21.63	572.0	344.7	816.7	794.7	21.99	37.147		
4,600.0	4,592.9	4,461.2	4,405.0	10.1	13.4	20.85	594.6	341.5	837.4	814.7	22.63	37.004		
4,700.0	4,692.9	4,558.4	4,499.5	10.3	13.8	20.10	617.2	338.4	858.1	834.9	23.28	36.867		
4,800.0	4,792.9	4,655.6	4,594.0	10.5	14.3	19.38	639.8	335.2	879.1	855.1	23.93	36.738		
4,900.0	4,892.9	4,752.8	4,688.5	10.7	14.7	18.70	662.4	332.1	900.1	875.5	24.58	36.616		

CC - Min centre to center distance or convergent point, SF - min separation factor, ES - min ellipse separation

COMPASS 2003.21 Build 46

SRC Kelly Farms Pad Sec.4-T5N-R66W - SRC Kelly Farms 22-4-3NHZ - Wellbore #1 - Plan #2 (4-21-1)													Offset Site Error:	0.0 ft
Survey Program: 0-MWD													Offset Well Error:	0.0 ft
Reference		Offset		Semi Major Axis			Distance							
Measured Depth	Vertical Depth	Measured Depth	Vertical Depth	Reference	Offset	Highside Toolface	Offset Wellbore Centre		Between Centres	Between Ellipses	Minimum Separation	Separation Factor	Warning	
(ft)	(ft)	(ft)	(ft)	(ft)	(ft)	(°)	+N/-S (ft)	+E/-W (ft)	(ft)	(ft)	(ft)			
0.0	0.0	0.0	0.0	0.0	0.0	78.47	8.0	39.3	40.2					
100.0	100.0	97.0	97.0	0.1	0.1	78.47	8.0	39.3	40.1	39.8	0.22	180.950		
200.0	200.0	197.0	197.0	0.3	0.3	78.47	8.0	39.3	40.1	39.4	0.67	60.014		
300.0	300.0	297.0	297.0	0.6	0.6	78.47	8.0	39.3	40.1	38.9	1.12	35.863		
400.0	400.0	397.0	397.0	0.8	0.8	78.47	8.0	39.3	40.1	38.5	1.57	25.573		
500.0	500.0	497.0	497.0	1.0	1.0	78.47	8.0	39.3	40.1	38.0	2.02	19.871		
600.0	600.0	597.0	597.0	1.2	1.2	78.47	8.0	39.3	40.1	37.6	2.47	16.248		
700.0	700.0	697.0	697.0	1.4	1.5	-87.73	8.0	39.3	40.0	37.1	2.89	13.837		
738.1	738.1	735.1	735.1	1.5	1.5	-90.00	8.0	39.3	39.9	36.9	3.04	13.118 CC		
800.0	799.8	796.8	796.8	1.6	1.7	-95.21	8.0	39.3	40.1	36.8	3.30	12.162 ES		
900.0	899.5	896.5	896.5	1.8	1.9	-106.20	8.0	39.3	41.6	37.9	3.73	11.160		
1,000.0	999.2	996.2	996.2	2.0	2.1	-116.35	8.0	39.3	44.6	40.4	4.17	10.697		
1,100.0	1,098.8	1,095.1	1,095.1	2.3	2.3	-126.60	9.4	38.5	49.5	44.9	4.61	10.736		
1,200.0	1,198.5	1,193.3	1,193.1	2.5	2.6	-137.51	13.8	36.3	57.7	52.6	5.05	11.434		
1,300.0	1,298.2	1,290.7	1,290.2	2.8	2.8	-147.39	21.2	32.7	69.9	64.4	5.48	12.751		
1,400.0	1,397.8	1,389.1	1,388.2	3.0	3.0	-154.79	29.7	28.4	84.6	78.7	5.92	14.295		
1,500.0	1,497.5	1,487.5	1,486.1	3.3	3.3	-159.96	38.1	24.2	100.3	93.9	6.36	15.777		
1,600.0	1,597.2	1,586.0	1,584.1	3.6	3.5	-163.72	46.6	19.9	116.5	109.7	6.80	17.148		
1,700.0	1,696.8	1,684.4	1,682.0	3.8	3.8	-166.55	55.1	15.7	133.2	125.9	7.24	18.397		
1,800.0	1,796.5	1,782.8	1,780.0	4.1	4.0	-168.75	63.6	11.5	150.0	142.4	7.68	19.529		
1,900.0	1,896.1	1,881.2	1,878.0	4.3	4.3	-170.51	72.1	7.2	167.1	159.0	8.13	20.554		
2,000.0	1,995.8	1,983.0	1,979.4	4.6	4.5	-171.93	80.4	3.1	183.8	175.2	8.57	21.452		
2,100.0	2,095.5	2,088.8	2,084.9	4.9	4.8	-172.85	85.9	0.3	197.5	188.5	8.97	22.005		
2,200.0	2,195.1	2,195.4	2,191.6	5.2	4.9	-173.34	88.0	-0.7	207.7	198.3	9.38	22.137		
2,300.0	2,294.8	2,295.7	2,291.8	5.4	5.1	-173.60	88.0	-0.7	215.8	206.0	9.80	22.019		
2,400.0	2,394.5	2,395.4	2,391.5	5.7	5.3	-173.83	88.0	-0.7	224.0	213.7	10.25	21.858		
2,500.0	2,494.1	2,495.0	2,491.1	6.0	5.6	-174.05	88.0	-0.7	232.1	221.4	10.69	21.707		
2,600.0	2,593.8	2,594.7	2,590.8	6.2	5.8	-174.25	88.0	-0.7	240.3	229.2	11.14	21.567		
2,700.0	2,693.5	2,694.3	2,690.5	6.5	6.0	-174.44	88.0	-0.7	248.5	236.9	11.59	21.437		
2,800.0	2,793.1	2,794.0	2,790.1	6.8	6.2	-174.62	88.0	-0.7	256.5	244.4	12.04	21.303		
2,900.0	2,893.0	2,893.9	2,890.0	7.0	6.4	-174.74	88.0	-0.7	261.9	249.5	12.47	21.010		
3,000.0	2,992.9	2,993.8	2,989.9	7.2	6.6	-174.79	88.0	-0.7	263.9	251.0	12.89	20.469		
3,100.0	3,092.9	3,093.8	3,089.9	7.3	6.8	-11.09	88.0	-0.7	263.9	249.8	14.17	18.631		
3,200.0	3,192.9	3,193.8	3,189.9	7.5	7.1	-11.09	88.0	-0.7	263.9	249.4	14.55	18.137		
3,300.0	3,292.9	3,293.8	3,289.9	7.7	7.3	-11.09	88.0	-0.7	263.9	249.0	14.94	17.664		
3,400.0	3,392.9	3,393.8	3,389.9	7.9	7.5	-11.09	88.0	-0.7	263.9	248.6	15.33	17.212		
3,500.0	3,492.9	3,493.8	3,489.9	8.0	7.7	-11.09	88.0	-0.7	263.9	248.2	15.73	16.779		
3,600.0	3,592.9	3,593.8	3,589.9	8.2	7.9	-11.09	88.0	-0.7	263.9	247.8	16.13	16.365		
3,700.0	3,692.9	3,693.8	3,689.9	8.4	8.2	-11.09	88.0	-0.7	263.9	247.4	16.53	15.968		
3,800.0	3,792.9	3,793.8	3,789.9	8.6	8.4	-11.09	88.0	-0.7	263.9	247.0	16.93	15.588		
3,900.0	3,892.9	3,893.8	3,889.9	8.8	8.6	-11.09	88.0	-0.7	263.9	246.6	17.34	15.224		
4,000.0	3,992.9	3,993.8	3,989.9	9.0	8.8	-11.09	88.0	-0.7	263.9	246.2	17.74	14.874		
4,100.0	4,092.9	4,093.8	4,089.9	9.1	9.0	-11.09	88.0	-0.7	263.9	245.8	18.15	14.539		
4,200.0	4,192.9	4,193.8	4,189.9	9.3	9.3	-11.09	88.0	-0.7	263.9	245.4	18.56	14.217		
4,300.0	4,292.9	4,293.8	4,289.9	9.5	9.5	-11.09	88.0	-0.7	263.9	245.0	18.98	13.908		
4,400.0	4,392.9	4,393.8	4,389.9	9.7	9.7	-11.09	88.0	-0.7	263.9	244.5	19.39	13.611		
4,500.0	4,492.9	4,493.8	4,489.9	9.9	9.9	-11.09	88.0	-0.7	263.9	244.1	19.81	13.325		
4,600.0	4,592.9	4,593.8	4,589.9	10.1	10.1	-11.09	88.0	-0.7	263.9	243.7	20.22	13.050		
4,700.0	4,692.9	4,693.8	4,689.9	10.3	10.4	-11.09	88.0	-0.7	263.9	243.3	20.64	12.786		
4,800.0	4,792.9	4,793.8	4,789.9	10.5	10.6	-11.09	88.0	-0.7	263.9	242.9	21.06	12.531		
4,900.0	4,892.9	4,893.8	4,889.9	10.7	10.8	-11.09	88.0	-0.7	263.9	242.5	21.48	12.285		

COMPASS 2003.21 Build 46

Company:	Synergy Resources	Local Co-ordinate Reference:	Well SRC Kelly Farms 22-4-3CHZ
Project:	SEC.4-T5N-R66W	TVD Reference:	WELL @ 4767.5ft (Ensign Rig #131 - RKB - 13.5')
Reference Site:	SRC Kelly Farms Pad Sec.4-T5N-R66W	MD Reference:	WELL @ 4767.5ft (Ensign Rig #131 - RKB - 13.5')
Site Error:	0.0ft	North Reference:	True
Reference Well:	SRC Kelly Farms 22-4-3CHZ	Survey Calculation Method:	Minimum Curvature
Well Error:	0.0ft	Output errors are at	2.00 sigma
Reference Wellbore	Wellbore #1	Database:	Landmark
Reference Design:	Plan #2 (4-21-14)	Offset TVD Reference:	Offset Datum

Offset Design		SRC Kelly Farms Pad Sec.4-T5N-R66W - SRC Kelly Farms 22-4-3NHZ - Wellbore #1 - Plan #2 (4-21-1)										Offset Site Error:		0.0 ft
Survey Program: 0-MWD												Offset Well Error:		0.0 ft
Reference		Offset		Semi Major Axis			Distance							Warning
Measured Depth (ft)	Vertical Depth (ft)	Measured Depth (ft)	Vertical Depth (ft)	Reference (ft)	Offset (ft)	Highside Toolface (°)	Offset Wellbore Centre +N/-S (ft)	+E/-W (ft)	Between Centres (ft)	Between Ellipses (ft)	Minimum Separation (ft)	Separation Factor		
5,000.0	4,992.9	4,993.8	4,989.9	10.9	11.0	-11.09	88.0	-0.7	263.9	242.0	21.91	12.049		
5,100.0	5,092.9	5,093.8	5,089.9	11.1	11.3	-11.09	88.0	-0.7	263.9	241.6	22.33	11.820		
5,200.0	5,192.9	5,193.8	5,189.9	11.3	11.5	-11.09	88.0	-0.7	263.9	241.2	22.75	11.600		
5,300.0	5,292.9	5,293.8	5,289.9	11.5	11.7	-11.09	88.0	-0.7	263.9	240.8	23.18	11.387		
5,400.0	5,392.9	5,393.8	5,389.9	11.7	11.9	-11.09	88.0	-0.7	263.9	240.3	23.60	11.182		
5,500.0	5,492.9	5,493.8	5,489.9	11.9	12.1	-11.09	88.0	-0.7	263.9	239.9	24.03	10.983		
5,600.0	5,592.9	5,593.8	5,589.9	12.1	12.4	-11.09	88.0	-0.7	263.9	239.5	24.46	10.791		
5,700.0	5,692.9	5,693.8	5,689.9	12.3	12.6	-11.09	88.0	-0.7	263.9	239.0	24.89	10.605		
5,800.0	5,792.9	5,793.8	5,789.9	12.5	12.8	-11.09	88.0	-0.7	263.9	238.6	25.32	10.426		
5,900.0	5,892.9	5,893.8	5,889.9	12.7	13.0	-11.09	88.0	-0.7	263.9	238.2	25.75	10.251		
6,000.0	5,992.9	5,993.8	5,989.9	12.9	13.3	-11.09	88.0	-0.7	263.9	237.8	26.18	10.083		
6,100.0	6,092.9	6,093.8	6,089.9	13.2	13.5	-11.09	88.0	-0.7	263.9	237.3	26.61	9.920		
6,200.0	6,192.9	6,193.8	6,189.9	13.4	13.7	-11.09	88.0	-0.7	263.9	236.9	27.04	9.761		
6,300.0	6,292.9	6,295.8	6,291.9	13.6	13.9	-10.96	88.0	-0.2	263.8	236.4	27.47	9.604		
6,400.0	6,392.9	6,401.6	6,397.1	13.8	14.1	-8.58	87.9	10.9	262.0	234.1	27.88	9.396		
6,500.0	6,492.9	6,502.7	6,495.3	14.0	14.3	-3.41	87.8	34.6	259.3	231.0	28.27	9.172		
6,562.6	6,555.4	6,563.2	6,552.3	14.1	14.4	-89.54	87.6	54.6	258.6	230.4	28.26	9.153		
6,600.0	6,592.7	6,598.4	6,584.7	14.2	14.5	-87.05	87.5	68.3	258.9	230.5	28.43	9.106		
6,700.0	6,690.8	6,691.1	6,666.9	14.4	14.8	-81.03	87.2	111.1	261.7	232.7	28.94	9.041		
6,800.0	6,785.3	6,781.4	6,741.6	14.7	15.1	-75.57	86.8	161.8	266.8	237.3	29.50	9.045		
6,900.0	6,874.4	6,869.7	6,808.6	15.1	15.6	-70.79	86.4	219.3	273.4	243.4	30.09	9.087		
7,000.0	6,956.2	6,956.4	6,867.7	15.5	16.2	-66.72	86.0	282.7	280.7	250.0	30.74	9.132		
7,100.0	7,029.4	7,041.7	6,918.7	16.1	17.1	-63.37	85.5	351.0	287.9	256.4	31.51	9.135		
7,200.0	7,092.3	7,126.0	6,961.6	17.0	18.1	-60.72	85.0	423.5	294.3	261.8	32.51	9.055		
7,300.0	7,143.8	7,209.5	6,996.2	18.2	19.3	-58.72	84.4	499.5	299.6	265.8	33.82	8.859		
7,400.0	7,182.9	7,292.4	7,022.5	19.7	20.7	-57.36	83.9	578.1	303.3	267.7	35.55	8.531		
7,500.0	7,208.8	7,375.0	7,040.3	21.5	22.2	-56.59	83.3	658.6	305.2	267.4	37.78	8.079		
7,600.0	7,221.0	7,457.4	7,049.5	23.4	23.9	-56.41	82.7	740.4	305.2	264.7	40.51	7.534		
7,700.0	7,222.0	7,545.6	7,051.0	25.5	25.8	-56.51	82.3	828.7	304.4	260.6	43.83	6.946		
7,800.0	7,222.0	7,645.6	7,051.0	27.8	28.0	-56.51	82.1	928.7	304.4	256.9	47.58	6.399		
7,900.0	7,222.0	7,745.6	7,051.0	30.1	30.3	-56.50	82.0	1,028.7	304.4	252.9	51.49	5.912		
8,000.0	7,222.0	7,845.6	7,051.0	32.5	32.8	-56.50	81.9	1,128.7	304.4	248.9	55.53	5.481		
8,100.0	7,222.0	7,945.6	7,051.0	35.0	35.2	-56.50	81.7	1,228.7	304.4	244.7	59.68	5.100		
8,200.0	7,222.0	8,045.6	7,051.0	37.5	37.7	-56.50	81.6	1,328.7	304.4	240.5	63.92	4.762		
8,300.0	7,222.0	8,145.6	7,051.0	40.1	40.3	-56.50	81.5	1,428.7	304.4	236.1	68.22	4.461		
8,400.0	7,222.0	8,245.6	7,051.0	42.6	42.9	-56.50	81.3	1,528.7	304.4	231.8	72.59	4.193		
8,500.0	7,222.0	8,345.6	7,051.0	45.3	45.5	-56.49	81.2	1,628.7	304.3	227.3	76.99	3.953		
8,600.0	7,222.0	8,445.6	7,051.0	47.9	48.1	-56.49	81.1	1,728.7	304.3	222.9	81.44	3.737		
8,700.0	7,222.0	8,545.6	7,051.0	50.5	50.8	-56.49	81.0	1,828.7	304.3	218.4	85.92	3.542		
8,800.0	7,222.0	8,645.6	7,051.0	53.2	53.4	-56.49	80.8	1,928.7	304.3	213.9	90.43	3.365		
8,900.0	7,222.0	8,745.6	7,051.0	55.9	56.1	-56.49	80.7	2,028.7	304.3	209.3	94.96	3.204		
9,000.0	7,222.0	8,845.6	7,051.0	58.6	58.8	-56.49	80.6	2,128.7	304.3	204.8	99.52	3.057		
9,100.0	7,222.0	8,945.6	7,051.0	61.3	61.5	-56.48	80.4	2,228.7	304.3	200.2	104.09	2.923		
9,200.0	7,222.0	9,045.6	7,051.0	64.0	64.2	-56.48	80.3	2,328.7	304.2	195.6	108.68	2.800		
9,300.0	7,222.0	9,145.6	7,051.0	66.7	67.0	-56.48	80.2	2,428.7	304.2	191.0	113.28	2.686		
9,400.0	7,222.0	9,245.6	7,051.0	69.5	69.7	-56.48	80.1	2,528.7	304.2	186.3	117.89	2.580		
9,500.0	7,222.0	9,345.6	7,051.0	72.2	72.4	-56.48	79.9	2,628.7	304.2	181.7	122.52	2.483		
9,600.0	7,222.0	9,445.6	7,051.0	74.9	75.2	-56.48	79.8	2,728.7	304.2	177.0	127.15	2.392		
9,700.0	7,222.0	9,545.6	7,051.0	77.7	77.9	-56.48	79.7	2,828.7	304.2	172.4	131.80	2.308		
9,800.0	7,222.0	9,645.6	7,051.0	80.4	80.7	-56.47	79.5	2,928.7	304.2	167.7	136.45	2.229		

CC - Min centre to center distance or convergent point, SF - min separation factor, ES - min ellipse separation

Company:	Synergy Resources	Local Co-ordinate Reference:	Well SRC Kelly Farms 22-4-3CHZ
Project:	SEC.4-T5N-R66W	TVD Reference:	WELL @ 4767.5ft (Ensign Rig #131 - RKB - 13.5')
Reference Site:	SRC Kelly Farms Pad Sec.4-T5N-R66W	MD Reference:	WELL @ 4767.5ft (Ensign Rig #131 - RKB - 13.5')
Site Error:	0.0ft	North Reference:	True
Reference Well:	SRC Kelly Farms 22-4-3CHZ	Survey Calculation Method:	Minimum Curvature
Well Error:	0.0ft	Output errors are at	2.00 sigma
Reference Wellbore	Wellbore #1	Database:	Landmark
Reference Design:	Plan #2 (4-21-14)	Offset TVD Reference:	Offset Datum

Offset Design		SRC Kelly Farms Pad Sec.4-T5N-R66W - SRC Kelly Farms 22-4-3NHZ - Wellbore #1 - Plan #2 (4-21-1										Offset Site Error: 0.0 ft	
Survey Program: 0-MWD												Offset Well Error: 0.0 ft	
Reference		Offset		Semi Major Axis			Distance						Warning
Measured Depth (ft)	Vertical Depth (ft)	Measured Depth (ft)	Vertical Depth (ft)	Reference (ft)	Offset (ft)	Highside Toolface (°)	Offset Wellbore Centre +N/-S (ft)	+E/-W (ft)	Between Centres (ft)	Between Ellipses (ft)	Minimum Separation (ft)	Separation Factor	
9,900.0	7,222.0	9,745.6	7,051.0	83.2	83.4	-56.47	79.4	3,028.7	304.2	163.1	141.10	2.156	
10,000.0	7,222.0	9,845.6	7,051.0	85.9	86.2	-56.47	79.3	3,128.7	304.1	158.4	145.77	2.087	
10,100.0	7,222.0	9,945.6	7,051.0	88.7	88.9	-56.47	79.1	3,228.7	304.1	153.7	150.44	2.022	
10,200.0	7,222.0	10,045.6	7,051.0	91.5	91.7	-56.47	79.0	3,328.7	304.1	149.0	155.11	1.961	
10,300.0	7,222.0	10,145.6	7,051.0	94.2	94.5	-56.47	78.9	3,428.7	304.1	144.3	159.79	1.903	
10,400.0	7,222.0	10,245.6	7,051.0	97.0	97.2	-56.46	78.8	3,528.7	304.1	139.6	164.47	1.849	
10,500.0	7,222.0	10,345.6	7,051.0	99.8	100.0	-56.46	78.6	3,628.7	304.1	134.9	169.16	1.798	
10,600.0	7,222.0	10,445.6	7,051.0	102.5	102.8	-56.46	78.5	3,728.7	304.1	130.2	173.85	1.749	
10,700.0	7,222.0	10,545.6	7,051.0	105.3	105.6	-56.46	78.4	3,828.7	304.1	125.5	178.55	1.703	
10,800.0	7,222.0	10,645.6	7,051.0	108.1	108.3	-56.46	78.2	3,928.7	304.0	120.8	183.24	1.659	
10,900.0	7,222.0	10,745.6	7,051.0	110.9	111.1	-56.46	78.1	4,028.7	304.0	116.1	187.94	1.618	
11,000.0	7,222.0	10,845.6	7,051.0	113.7	113.9	-56.45	78.0	4,128.7	304.0	111.4	192.64	1.578	
11,100.0	7,222.0	10,945.6	7,051.0	116.4	116.7	-56.45	77.9	4,228.7	304.0	106.7	197.35	1.540	
11,200.0	7,222.0	11,045.6	7,051.0	119.2	119.5	-56.45	77.7	4,328.7	304.0	101.9	202.06	1.504	
11,300.0	7,222.0	11,145.6	7,051.0	122.0	122.2	-56.45	77.6	4,428.7	304.0	97.2	206.76	1.470	Level 3
11,400.0	7,222.0	11,245.6	7,051.0	124.8	125.0	-56.45	77.5	4,528.7	304.0	92.5	211.47	1.437	Level 3
11,500.0	7,222.0	11,345.6	7,051.0	127.6	127.8	-56.45	77.3	4,628.7	303.9	87.8	216.19	1.406	Level 3
11,600.0	7,222.0	11,445.6	7,051.0	130.4	130.6	-56.44	77.2	4,728.7	303.9	83.0	220.90	1.376	Level 3
11,700.0	7,222.0	11,545.6	7,051.0	133.2	133.4	-56.44	77.1	4,828.7	303.9	78.3	225.62	1.347	Level 3
11,800.0	7,222.0	11,645.6	7,051.0	135.9	136.2	-56.44	76.9	4,928.7	303.9	73.6	230.33	1.319	Level 3
11,900.0	7,222.0	11,745.6	7,051.0	138.7	139.0	-56.44	76.8	5,028.7	303.9	68.8	235.05	1.293	Level 3
11,988.0	7,222.0	11,833.6	7,051.0	141.2	141.4	-56.44	76.7	5,116.7	303.9	64.7	239.20	1.270	Level 3, SF

Company:	Synergy Resources	Local Co-ordinate Reference:	Well SRC Kelly Farms 22-4-3CHZ
Project:	SEC.4-T5N-R66W	TVD Reference:	WELL @ 4767.5ft (Ensign Rig #131 - RKB - 13.5')
Reference Site:	SRC Kelly Farms Pad Sec.4-T5N-R66W	MD Reference:	WELL @ 4767.5ft (Ensign Rig #131 - RKB - 13.5')
Site Error:	0.0ft	North Reference:	True
Reference Well:	SRC Kelly Farms 22-4-3CHZ	Survey Calculation Method:	Minimum Curvature
Well Error:	0.0ft	Output errors are at	2.00 sigma
Reference Wellbore	Wellbore #1	Database:	Landmark
Reference Design:	Plan #2 (4-21-14)	Offset TVD Reference:	Offset Datum

Offset Design		SRC Kelly Farms Pad Sec.4-T5N-R66W - SRC Kelly Farms A-4-3CHZ - Wellbore #1 - Plan #2 (4-21-14)										Offset Site Error:		0.0 ft
Survey Program: 0-MWD												Offset Well Error:		0.0 ft
Reference		Offset		Semi Major Axis			Distance							Warning
Measured Depth (ft)	Vertical Depth (ft)	Measured Depth (ft)	Vertical Depth (ft)	Reference (ft)	Offset (ft)	Highside Toolface (°)	Offset Wellbore Centre +N/-S (ft)	+E/-W (ft)	Between Centres (ft)	Between Ellipses (ft)	Minimum Separation (ft)	Separation Factor		
0.0	0.0	0.0	0.0	0.0	0.0	49.02	30.2	34.8	46.1					
100.0	100.0	98.0	98.0	0.1	0.1	49.02	30.2	34.8	46.1	45.9	0.22	207.163		
200.0	200.0	198.0	198.0	0.3	0.3	49.02	30.2	34.8	46.1	45.4	0.67	68.824		
300.0	300.0	298.0	298.0	0.6	0.6	49.02	30.2	34.8	46.1	45.0	1.12	41.184		
400.0	400.0	398.0	398.0	0.8	0.8	49.02	30.2	34.8	46.1	44.5	1.57	29.383		
500.0	500.0	498.0	498.0	1.0	1.0	49.02	30.2	34.8	46.1	44.1	2.02	22.839		
600.0	600.0	598.0	598.0	1.2	1.2	49.02	30.2	34.8	46.1	43.6	2.47	18.679	CC, ES	
700.0	700.0	698.0	698.0	1.4	1.5	-116.61	30.2	34.8	46.9	44.0	2.89	16.209		
800.0	799.8	797.8	797.8	1.6	1.7	-121.99	30.2	34.8	49.4	46.1	3.30	14.977		
900.0	899.5	895.8	895.8	1.8	1.9	-129.68	31.8	35.1	55.6	51.9	3.72	14.932		
1,000.0	999.2	993.0	992.9	2.0	2.1	-136.68	36.6	36.1	66.0	61.9	4.16	15.875		
1,100.0	1,098.8	1,089.3	1,088.8	2.3	2.3	-142.12	44.5	37.8	80.5	75.9	4.60	17.501		
1,200.0	1,198.5	1,184.5	1,183.4	2.5	2.6	-146.07	55.5	40.0	98.7	93.7	5.04	19.588		
1,300.0	1,298.2	1,279.4	1,277.2	2.8	2.8	-148.87	69.3	42.9	120.4	114.9	5.48	21.949		
1,400.0	1,397.8	1,376.7	1,373.3	3.0	3.1	-150.88	84.3	46.0	143.1	137.2	5.93	24.149		
1,500.0	1,497.5	1,474.0	1,469.3	3.3	3.4	-152.34	99.4	49.1	166.0	159.6	6.37	26.051		
1,600.0	1,597.2	1,571.2	1,565.4	3.6	3.7	-153.45	114.4	52.2	189.0	182.2	6.82	27.700		
1,700.0	1,696.8	1,668.5	1,661.4	3.8	4.0	-154.31	129.4	55.3	212.0	204.7	7.28	29.136		
1,800.0	1,796.5	1,765.8	1,757.5	4.1	4.4	-155.01	144.4	58.4	235.0	227.3	7.73	30.399		
1,900.0	1,896.1	1,863.1	1,853.5	4.3	4.7	-155.58	159.5	61.5	258.1	249.9	8.19	31.516		
2,000.0	1,995.8	1,960.3	1,949.6	4.6	5.0	-156.06	174.5	64.7	281.2	272.5	8.65	32.509		
2,100.0	2,095.5	2,057.6	2,045.6	4.9	5.3	-156.46	189.5	67.8	304.3	295.2	9.11	33.396		
2,200.0	2,195.1	2,154.9	2,141.7	5.2	5.7	-156.81	204.5	70.9	327.4	317.8	9.58	34.193		
2,300.0	2,294.8	2,252.1	2,237.8	5.4	6.0	-157.11	219.6	74.0	350.5	340.5	10.04	34.913		
2,400.0	2,394.5	2,349.4	2,333.8	5.7	6.4	-157.38	234.6	77.1	373.7	363.2	10.51	35.565		
2,500.0	2,494.1	2,446.7	2,429.9	6.0	6.7	-157.61	249.6	80.2	396.8	385.9	10.97	36.160		
2,600.0	2,593.8	2,544.0	2,525.9	6.2	7.0	-157.82	264.6	83.3	420.0	408.5	11.44	36.703		
2,700.0	2,693.5	2,654.8	2,635.6	6.5	7.4	-158.05	280.4	86.6	442.0	430.1	11.90	37.139		
2,800.0	2,793.1	2,771.4	2,751.5	6.8	7.7	-158.36	292.7	89.1	460.0	447.7	12.35	37.262		
2,900.0	2,893.0	2,889.8	2,869.7	7.0	7.9	-158.63	300.3	90.7	471.7	458.9	12.77	36.929		
3,000.0	2,992.9	3,009.4	2,989.2	7.2	8.1	-158.72	303.2	91.3	476.0	462.8	13.20	36.070		
3,100.0	3,092.9	3,111.2	3,090.9	7.3	8.3	4.98	303.2	91.3	476.0	460.5	15.51	30.695		
3,200.0	3,192.9	3,211.2	3,190.9	7.5	8.4	4.98	303.2	91.3	476.0	460.2	15.85	30.026		
3,300.0	3,292.9	3,311.2	3,290.9	7.7	8.6	4.98	303.2	91.3	476.0	459.8	16.20	29.377		
3,400.0	3,392.9	3,411.2	3,390.9	7.9	8.8	4.98	303.2	91.3	476.0	459.5	16.56	28.746		
3,500.0	3,492.9	3,511.2	3,490.9	8.0	9.0	4.98	303.2	91.3	476.0	459.1	16.92	28.134		
3,600.0	3,592.9	3,611.2	3,590.9	8.2	9.2	4.98	303.2	91.3	476.0	458.7	17.28	27.541		
3,700.0	3,692.9	3,711.2	3,690.9	8.4	9.4	4.98	303.2	91.3	476.0	458.4	17.65	26.967		
3,800.0	3,792.9	3,811.2	3,790.9	8.6	9.5	4.98	303.2	91.3	476.0	458.0	18.02	26.410		
3,900.0	3,892.9	3,911.2	3,890.9	8.8	9.7	4.98	303.2	91.3	476.0	457.6	18.40	25.872		
4,000.0	3,992.9	4,011.2	3,990.9	9.0	9.9	4.98	303.2	91.3	476.0	457.3	18.78	25.350		
4,100.0	4,092.9	4,111.2	4,090.9	9.1	10.1	4.98	303.2	91.3	476.0	456.9	19.16	24.845		
4,200.0	4,192.9	4,211.2	4,190.9	9.3	10.3	4.98	303.2	91.3	476.0	456.5	19.54	24.356		
4,300.0	4,292.9	4,311.2	4,290.9	9.5	10.5	4.98	303.2	91.3	476.0	456.1	19.93	23.883		
4,400.0	4,392.9	4,411.2	4,390.9	9.7	10.7	4.98	303.2	91.3	476.0	455.7	20.32	23.424		
4,500.0	4,492.9	4,511.2	4,490.9	9.9	10.9	4.98	303.2	91.3	476.0	455.3	20.71	22.981		
4,600.0	4,592.9	4,611.2	4,590.9	10.1	11.1	4.98	303.2	91.3	476.0	454.9	21.11	22.551		
4,700.0	4,692.9	4,711.2	4,690.9	10.3	11.3	4.98	303.2	91.3	476.0	454.5	21.51	22.135		
4,800.0	4,792.9	4,811.2	4,790.9	10.5	11.5	4.98	303.2	91.3	476.0	454.1	21.90	21.732		
4,900.0	4,892.9	4,911.2	4,890.9	10.7	11.7	4.98	303.2	91.3	476.0	453.7	22.31	21.341		
5,000.0	4,992.9	5,011.2	4,990.9	10.9	11.9	4.98	303.2	91.3	476.0	453.3	22.71	20.963		

CC - Min centre to center distance or convergent point, SF - min separation factor, ES - min ellipse separation

Company:	Synergy Resources	Local Co-ordinate Reference:	Well SRC Kelly Farms 22-4-3CHZ
Project:	SEC.4-T5N-R66W	TVD Reference:	WELL @ 4767.5ft (Ensign Rig #131 - RKB - 13.5')
Reference Site:	SRC Kelly Farms Pad Sec.4-T5N-R66W	MD Reference:	WELL @ 4767.5ft (Ensign Rig #131 - RKB - 13.5')
Site Error:	0.0ft	North Reference:	True
Reference Well:	SRC Kelly Farms 22-4-3CHZ	Survey Calculation Method:	Minimum Curvature
Well Error:	0.0ft	Output errors are at	2.00 sigma
Reference Wellbore	Wellbore #1	Database:	Landmark
Reference Design:	Plan #2 (4-21-14)	Offset TVD Reference:	Offset Datum

Offset Design		SRC Kelly Farms Pad Sec.4-T5N-R66W - SRC Kelly Farms A-4-3CHZ - Wellbore #1 - Plan #2 (4-21-14)										Offset Site Error:		0.0 ft
Survey Program: 0-MWD												Offset Well Error:		0.0 ft
Reference		Offset		Semi Major Axis			Distance							Warning
Measured Depth (ft)	Vertical Depth (ft)	Measured Depth (ft)	Vertical Depth (ft)	Reference (ft)	Offset (ft)	Highside Toolface (°)	Offset Wellbore Centre +N/-S (ft)	+E/-W (ft)	Between Centres (ft)	Between Ellipses (ft)	Minimum Separation (ft)	Separation Factor		
5,100.0	5,092.9	5,111.2	5,090.9	11.1	12.1	4.98	303.2	91.3	476.0	452.9	23.11	20.596		
5,200.0	5,192.9	5,211.2	5,190.9	11.3	12.3	4.98	303.2	91.3	476.0	452.5	23.52	20.241		
5,300.0	5,292.9	5,311.2	5,290.9	11.5	12.5	4.98	303.2	91.3	476.0	452.1	23.93	19.896		
5,400.0	5,392.9	5,411.2	5,390.9	11.7	12.7	4.98	303.2	91.3	476.0	451.7	24.33	19.562		
5,500.0	5,492.9	5,511.2	5,490.9	11.9	12.9	4.98	303.2	91.3	476.0	451.3	24.75	19.237		
5,600.0	5,592.9	5,611.2	5,590.9	12.1	13.1	4.98	303.2	91.3	476.0	450.9	25.16	18.922		
5,700.0	5,692.9	5,711.2	5,690.9	12.3	13.3	4.98	303.2	91.3	476.0	450.5	25.57	18.617		
5,800.0	5,792.9	5,811.2	5,790.9	12.5	13.5	4.98	303.2	91.3	476.0	450.0	25.98	18.320		
5,900.0	5,892.9	5,911.2	5,890.9	12.7	13.7	4.98	303.2	91.3	476.0	449.6	26.40	18.032		
6,000.0	5,992.9	6,011.2	5,990.9	12.9	13.9	4.98	303.2	91.3	476.0	449.2	26.82	17.751		
6,100.0	6,092.9	6,111.2	6,090.9	13.2	14.1	4.98	303.2	91.3	476.0	448.8	27.23	17.479		
6,200.0	6,192.9	6,211.2	6,190.9	13.4	14.4	4.98	303.2	91.3	476.0	448.4	27.65	17.215		
6,300.0	6,292.9	6,311.2	6,290.9	13.6	14.6	4.98	303.2	91.3	476.0	448.0	28.07	16.957		
6,400.0	6,392.9	6,411.2	6,390.9	13.8	14.8	4.98	303.2	91.3	476.0	447.5	28.49	16.707		
6,500.0	6,492.9	6,511.2	6,490.9	14.0	15.0	4.98	303.2	91.3	476.0	447.1	28.91	16.464		
6,600.0	6,592.7	6,606.8	6,586.4	14.2	15.2	-85.17	303.2	95.5	476.0	447.5	28.47	16.720		
6,700.0	6,690.8	6,701.7	6,679.8	14.4	15.4	-85.38	303.2	112.0	475.8	446.9	28.92	16.451		
6,800.0	6,785.3	6,796.7	6,770.3	14.7	15.6	-85.67	303.2	140.7	475.6	446.1	29.45	16.148		
6,900.0	6,874.4	6,892.1	6,856.6	15.1	15.9	-86.04	303.1	181.3	475.3	445.2	30.12	15.783		
7,000.0	6,956.2	6,988.0	6,937.0	15.5	16.3	-86.48	303.0	233.3	475.0	444.0	31.01	15.318		
7,100.0	7,029.4	7,084.3	7,010.1	16.1	16.8	-86.99	302.9	295.9	474.7	442.5	32.26	14.717		
7,200.0	7,092.3	7,181.1	7,074.5	17.0	17.5	-87.56	302.8	368.2	474.5	440.5	33.97	13.966		
7,300.0	7,143.8	7,278.6	7,128.9	18.2	18.5	-88.18	302.6	449.0	474.2	437.9	36.25	13.083		
7,400.0	7,182.9	7,376.8	7,172.0	19.7	19.8	-88.83	302.5	537.1	474.0	434.9	39.11	12.120		
7,500.0	7,208.8	7,475.7	7,202.9	21.5	21.4	-89.51	302.3	631.0	473.8	431.3	42.51	11.145		
7,600.0	7,221.0	7,575.4	7,220.7	23.4	23.3	-90.20	302.2	729.0	473.7	427.4	46.36	10.218		
7,700.0	7,222.0	7,675.5	7,225.0	25.5	25.3	-90.60	302.0	828.9	473.7	423.2	50.52	9.376		
7,800.0	7,222.0	7,775.5	7,225.0	27.8	27.4	-90.60	301.9	928.9	473.7	418.7	54.94	8.622		
7,900.0	7,222.0	7,875.5	7,225.0	30.1	29.7	-90.60	301.8	1,028.9	473.7	414.1	59.55	7.954		
8,000.0	7,222.0	7,975.5	7,225.0	32.5	32.0	-90.60	301.6	1,128.9	473.7	409.3	64.32	7.364		
8,100.0	7,222.0	8,075.5	7,225.0	35.0	34.5	-90.60	301.5	1,228.9	473.6	404.4	69.22	6.842		
8,200.0	7,222.0	8,175.5	7,225.0	37.5	36.9	-90.60	301.4	1,328.9	473.6	399.4	74.22	6.381		
8,300.0	7,222.0	8,275.5	7,225.0	40.1	39.4	-90.60	301.3	1,428.9	473.6	394.3	79.31	5.972		
8,400.0	7,222.0	8,375.5	7,225.0	42.6	42.0	-90.60	301.2	1,528.9	473.6	389.2	84.46	5.608		
8,500.0	7,222.0	8,475.5	7,225.0	45.3	44.6	-90.60	301.0	1,628.9	473.6	383.9	89.67	5.282		
8,600.0	7,222.0	8,575.5	7,225.0	47.9	47.2	-90.60	300.9	1,728.9	473.6	378.7	94.92	4.989		
8,700.0	7,222.0	8,675.5	7,225.0	50.5	49.8	-90.60	300.8	1,828.9	473.6	373.4	100.21	4.726		
8,800.0	7,222.0	8,775.5	7,225.0	53.2	52.5	-90.60	300.7	1,928.9	473.6	368.0	105.54	4.487		
8,900.0	7,222.0	8,875.5	7,225.0	55.9	55.1	-90.60	300.5	2,028.9	473.6	362.7	110.90	4.270		
9,000.0	7,222.0	8,975.5	7,225.0	58.6	57.8	-90.60	300.4	2,128.9	473.6	357.3	116.28	4.073		
9,100.0	7,222.0	9,075.5	7,225.0	61.3	60.5	-90.60	300.3	2,228.9	473.6	351.9	121.68	3.892		
9,200.0	7,222.0	9,175.5	7,225.0	64.0	63.2	-90.60	300.2	2,328.9	473.6	346.5	127.10	3.726		
9,300.0	7,222.0	9,275.5	7,225.0	66.7	65.9	-90.60	300.1	2,428.9	473.5	341.0	132.54	3.573		
9,400.0	7,222.0	9,375.5	7,225.0	69.5	68.6	-90.60	299.9	2,528.9	473.5	335.5	137.99	3.432		
9,500.0	7,222.0	9,475.5	7,225.0	72.2	71.4	-90.60	299.8	2,628.9	473.5	330.1	143.45	3.301		
9,600.0	7,222.0	9,575.5	7,225.0	74.9	74.1	-90.61	299.7	2,728.9	473.5	324.6	148.93	3.179		
9,700.0	7,222.0	9,675.5	7,225.0	77.7	76.8	-90.61	299.6	2,828.9	473.5	319.1	154.42	3.066		
9,800.0	7,222.0	9,775.5	7,225.0	80.4	79.6	-90.61	299.4	2,928.9	473.5	313.6	159.91	2.961		
9,900.0	7,222.0	9,875.5	7,225.0	83.2	82.3	-90.61	299.3	3,028.9	473.5	308.1	165.42	2.862		
10,000.0	7,222.0	9,975.5	7,225.0	85.9	85.1	-90.61	299.2	3,128.9	473.5	302.6	170.93	2.770		

CC - Min centre to center distance or convergent point, SF - min separation factor, ES - min ellipse separation

Company:	Synergy Resources	Local Co-ordinate Reference:	Well SRC Kelly Farms 22-4-3CHZ
Project:	SEC.4-T5N-R66W	TVD Reference:	WELL @ 4767.5ft (Ensign Rig #131 - RKB - 13.5')
Reference Site:	SRC Kelly Farms Pad Sec.4-T5N-R66W	MD Reference:	WELL @ 4767.5ft (Ensign Rig #131 - RKB - 13.5')
Site Error:	0.0ft	North Reference:	True
Reference Well:	SRC Kelly Farms 22-4-3CHZ	Survey Calculation Method:	Minimum Curvature
Well Error:	0.0ft	Output errors are at	2.00 sigma
Reference Wellbore	Wellbore #1	Database:	Landmark
Reference Design:	Plan #2 (4-21-14)	Offset TVD Reference:	Offset Datum

Offset Design		SRC Kelly Farms Pad Sec.4-T5N-R66W - SRC Kelly Farms A-4-3CHZ - Wellbore #1 - Plan #2 (4-21-14)										Offset Site Error:		0.0 ft	
Survey Program: 0-MWD												Offset Well Error:		0.0 ft	
Reference		Offset		Semi Major Axis			Distance							Warning	
Measured Depth (ft)	Vertical Depth (ft)	Measured Depth (ft)	Vertical Depth (ft)	Reference (ft)	Offset (ft)	Highside Toolface (°)	Offset Wellbore Centre		Between Centres (ft)	Between Ellipses (ft)	Minimum Separation (ft)	Separation Factor			
							+N/-S (ft)	+E/-W (ft)							
10,100.0	7,222.0	10,075.5	7,225.0	88.7	87.8	-90.61	299.1	3,228.9	473.5	297.0	176.44	2.683			
10,200.0	7,222.0	10,175.5	7,225.0	91.5	90.6	-90.61	299.0	3,328.9	473.5	291.5	181.97	2.602			
10,300.0	7,222.0	10,275.5	7,225.0	94.2	93.3	-90.61	298.8	3,428.9	473.5	286.0	187.50	2.525			
10,400.0	7,222.0	10,375.5	7,225.0	97.0	96.1	-90.61	298.7	3,528.9	473.5	280.4	193.03	2.453			
10,500.0	7,222.0	10,475.5	7,225.0	99.8	98.9	-90.61	298.6	3,628.9	473.4	274.9	198.57	2.384			
10,600.0	7,222.0	10,575.5	7,225.0	102.5	101.6	-90.61	298.5	3,728.9	473.4	269.3	204.11	2.319			
10,700.0	7,222.0	10,675.5	7,225.0	105.3	104.4	-90.61	298.4	3,828.9	473.4	263.8	209.66	2.258			
10,800.0	7,222.0	10,775.5	7,225.0	108.1	107.2	-90.61	298.2	3,928.9	473.4	258.2	215.21	2.200			
10,900.0	7,222.0	10,875.5	7,225.0	110.9	110.0	-90.61	298.1	4,028.9	473.4	252.6	220.76	2.144			
11,000.0	7,222.0	10,975.5	7,225.0	113.7	112.7	-90.61	298.0	4,128.9	473.4	247.1	226.32	2.092			
11,100.0	7,222.0	11,075.5	7,225.0	116.4	115.5	-90.61	297.9	4,228.9	473.4	241.5	231.88	2.042			
11,200.0	7,222.0	11,175.5	7,225.0	119.2	118.3	-90.61	297.7	4,328.9	473.4	235.9	237.44	1.994			
11,300.0	7,222.0	11,275.5	7,225.0	122.0	121.1	-90.61	297.6	4,428.9	473.4	230.4	243.01	1.948			
11,400.0	7,222.0	11,375.5	7,225.0	124.8	123.9	-90.61	297.5	4,528.9	473.4	224.8	248.58	1.904			
11,500.0	7,222.0	11,475.5	7,225.0	127.6	126.6	-90.61	297.4	4,628.9	473.4	219.2	254.15	1.863			
11,600.0	7,222.0	11,575.5	7,225.0	130.4	129.4	-90.61	297.3	4,728.9	473.4	213.6	259.72	1.823			
11,700.0	7,222.0	11,675.5	7,225.0	133.2	132.2	-90.61	297.1	4,828.9	473.3	208.1	265.29	1.784			
11,800.0	7,222.0	11,775.5	7,225.0	135.9	135.0	-90.61	297.0	4,928.9	473.3	202.5	270.87	1.747			
11,900.0	7,222.0	11,875.5	7,225.0	138.7	137.8	-90.61	296.9	5,028.9	473.3	196.9	276.45	1.712			
11,988.0	7,222.0	11,963.5	7,225.0	141.2	140.2	-90.61	296.8	5,116.9	473.3	192.0	281.36	1.682 SF			

Company:	Synergy Resources	Local Co-ordinate Reference:	Well SRC Kelly Farms 22-4-3CHZ
Project:	SEC.4-T5N-R66W	TVD Reference:	WELL @ 4767.5ft (Ensign Rig #131 - RKB - 13.5')
Reference Site:	SRC Kelly Farms Pad Sec.4-T5N-R66W	MD Reference:	WELL @ 4767.5ft (Ensign Rig #131 - RKB - 13.5')
Site Error:	0.0ft	North Reference:	True
Reference Well:	SRC Kelly Farms 22-4-3CHZ	Survey Calculation Method:	Minimum Curvature
Well Error:	0.0ft	Output errors are at	2.00 sigma
Reference Wellbore	Wellbore #1	Database:	Landmark
Reference Design:	Plan #2 (4-21-14)	Offset TVD Reference:	Offset Datum

Offset Design		SRC Kelly Farms Pad Sec.4-T5N-R66W - SRC Kelly Farms A-4-3NHZ - Wellbore #1 - Plan #2 (4-21-14)										Offset Site Error:		0.0 ft
Survey Program: 0-MWD												Offset Well Error:		0.0 ft
Reference		Offset		Semi Major Axis			Distance							Warning
Measured Depth (ft)	Vertical Depth (ft)	Measured Depth (ft)	Vertical Depth (ft)	Reference (ft)	Offset (ft)	Highside Toolface (°)	Offset Wellbore Centre +N/-S (ft)	+E/-W (ft)	Between Centres (ft)	Between Ellipses (ft)	Minimum Separation (ft)	Separation Factor		
0.0	0.0	0.0	0.0	0.0	0.0	-11.34	22.2	-4.5	22.7					
100.0	100.0	99.0	99.0	0.1	0.1	-11.34	22.2	-4.5	22.7	22.4	0.22	101.309		
200.0	200.0	199.0	199.0	0.3	0.3	-11.34	22.2	-4.5	22.7	22.0	0.67	33.713	CC, ES	
300.0	300.0	298.2	298.2	0.6	0.6	-10.47	23.9	-4.4	24.3	23.2	1.12	21.661		
400.0	400.0	397.2	397.0	0.8	0.8	-8.45	29.0	-4.3	29.4	27.8	1.58	18.576		
500.0	500.0	495.7	495.1	1.0	1.0	-6.28	37.5	-4.1	37.9	35.8	2.04	18.540		
600.0	600.0	595.0	593.9	1.2	1.3	-4.63	48.0	-3.9	48.4	45.9	2.50	19.337		
700.0	700.0	694.2	692.6	1.4	1.6	-167.59	58.5	-3.7	60.6	57.7	2.94	20.643		
800.0	799.8	793.0	790.8	1.6	1.9	-167.65	68.9	-3.4	76.3	72.9	3.35	22.744		
900.0	899.5	891.3	888.6	1.8	2.1	-168.07	79.4	-3.2	94.5	90.8	3.77	25.074		
1,000.0	999.2	989.6	986.3	2.0	2.4	-168.40	89.8	-3.0	113.0	108.8	4.20	26.943		
1,100.0	1,098.8	1,087.8	1,084.0	2.3	2.7	-168.63	100.2	-2.7	131.5	126.9	4.63	28.422		
1,200.0	1,198.5	1,186.1	1,181.7	2.5	3.0	-168.80	110.6	-2.5	150.0	145.0	5.07	29.617		
1,300.0	1,298.2	1,284.4	1,279.4	2.8	3.3	-168.94	121.0	-2.3	168.5	163.0	5.51	30.593		
1,400.0	1,397.8	1,382.7	1,377.2	3.0	3.6	-169.05	131.4	-2.1	187.0	181.1	5.95	31.413		
1,500.0	1,497.5	1,480.9	1,474.9	3.3	3.9	-169.14	141.8	-1.8	205.5	199.1	6.40	32.103		
1,600.0	1,597.2	1,579.2	1,572.6	3.6	4.1	-169.22	152.2	-1.6	224.0	217.2	6.85	32.694		
1,700.0	1,696.8	1,677.5	1,670.3	3.8	4.4	-169.28	162.6	-1.4	242.5	235.2	7.30	33.203		
1,800.0	1,796.5	1,775.8	1,768.0	4.1	4.7	-169.34	173.0	-1.1	261.0	253.3	7.76	33.648		
1,900.0	1,896.1	1,874.0	1,865.8	4.3	5.0	-169.38	183.5	-0.9	279.5	271.3	8.21	34.038		
2,000.0	1,995.8	1,972.3	1,963.5	4.6	5.3	-169.42	193.9	-0.7	298.0	289.4	8.67	34.384		
2,100.0	2,095.5	2,070.6	2,061.2	4.9	5.6	-169.46	204.3	-0.5	316.5	307.4	9.12	34.691		
2,200.0	2,195.1	2,168.9	2,158.9	5.2	5.9	-169.49	214.7	-0.2	335.0	325.5	9.58	34.967		
2,300.0	2,294.8	2,267.1	2,256.6	5.4	6.2	-169.52	225.1	0.0	353.5	343.5	10.04	35.216		
2,400.0	2,394.5	2,365.4	2,354.4	5.7	6.5	-169.55	235.5	0.2	372.0	361.5	10.50	35.441		
2,500.0	2,494.1	2,463.7	2,452.1	6.0	6.7	-169.57	245.9	0.5	390.5	379.6	10.96	35.646		
2,600.0	2,593.8	2,561.9	2,549.8	6.2	7.0	-169.59	256.3	0.7	409.0	397.6	11.42	35.833		
2,700.0	2,693.5	2,660.2	2,647.5	6.5	7.3	-169.61	266.7	0.9	427.5	415.7	11.88	36.004		
2,800.0	2,793.1	2,758.5	2,745.3	6.8	7.6	-169.65	277.2	1.2	445.9	433.6	12.34	36.139		
2,900.0	2,893.0	2,857.2	2,843.4	7.0	7.9	-169.66	287.6	1.4	461.8	449.0	12.79	36.109		
3,000.0	2,992.9	2,956.5	2,942.1	7.2	8.2	-169.59	298.1	1.6	474.2	461.0	13.24	35.823		
3,100.0	3,092.9	3,055.9	3,041.0	7.3	8.5	-5.73	308.7	1.8	484.8	469.0	15.80	30.690		
3,200.0	3,192.9	3,155.3	3,139.8	7.5	8.8	-5.58	319.2	2.1	495.3	479.0	16.26	30.467		
3,300.0	3,292.9	3,254.8	3,238.7	7.7	9.1	-5.44	329.7	2.3	505.8	489.1	16.72	30.250		
3,400.0	3,392.9	3,354.2	3,337.6	7.9	9.4	-5.30	340.3	2.5	516.3	499.1	17.19	30.041		
3,500.0	3,492.9	3,453.6	3,436.5	8.0	9.7	-5.17	350.8	2.8	526.9	509.2	17.66	29.839		
3,600.0	3,592.9	3,553.1	3,535.3	8.2	10.0	-5.05	361.3	3.0	537.4	519.3	18.13	29.643		
3,700.0	3,692.9	3,652.5	3,634.2	8.4	10.2	-4.92	371.9	3.2	547.9	529.3	18.60	29.454		
3,800.0	3,792.9	3,752.0	3,733.1	8.6	10.5	-4.81	382.4	3.5	558.5	539.4	19.08	29.271		
3,900.0	3,892.9	3,851.4	3,832.0	8.8	10.8	-4.69	392.9	3.7	569.0	549.4	19.56	29.094		
4,000.0	3,992.9	3,950.8	3,930.9	9.0	11.1	-4.59	403.5	3.9	579.5	559.5	20.04	28.923		
4,100.0	4,092.9	4,050.3	4,029.7	9.1	11.4	-4.48	414.0	4.2	590.1	569.6	20.52	28.758		
4,200.0	4,192.9	4,149.7	4,128.6	9.3	11.7	-4.38	424.5	4.4	600.6	579.6	21.00	28.598		
4,300.0	4,292.9	4,249.1	4,227.5	9.5	12.0	-4.28	435.1	4.6	611.2	589.7	21.49	28.443		
4,400.0	4,392.9	4,348.6	4,326.4	9.7	12.3	-4.19	445.6	4.9	621.7	599.7	21.97	28.294		
4,500.0	4,492.9	4,448.0	4,425.2	9.9	12.6	-4.10	456.1	5.1	632.3	609.8	22.46	28.149		
4,600.0	4,592.9	4,547.5	4,524.1	10.1	12.9	-4.01	466.7	5.3	642.8	619.9	22.95	28.009		
4,700.0	4,692.9	4,646.9	4,623.0	10.3	13.2	-3.92	477.2	5.6	653.4	629.9	23.44	27.873		
4,800.0	4,792.9	4,746.3	4,721.9	10.5	13.5	-3.84	487.7	5.8	663.9	640.0	23.93	27.742		
4,900.0	4,892.9	4,845.8	4,820.8	10.7	13.8	-3.76	498.3	6.0	674.5	650.0	24.42	27.615		
5,000.0	4,992.9	4,952.5	4,926.9	10.9	14.1	-3.68	509.4	6.3	684.9	660.0	24.93	27.477		

CC - Min centre to center distance or convergent point, SF - min separation factor, ES - min ellipse separation

Company:	Synergy Resources	Local Co-ordinate Reference:	Well SRC Kelly Farms 22-4-3CHZ
Project:	SEC.4-T5N-R66W	TVD Reference:	WELL @ 4767.5ft (Ensign Rig #131 - RKB - 13.5')
Reference Site:	SRC Kelly Farms Pad Sec.4-T5N-R66W	MD Reference:	WELL @ 4767.5ft (Ensign Rig #131 - RKB - 13.5')
Site Error:	0.0ft	North Reference:	True
Reference Well:	SRC Kelly Farms 22-4-3CHZ	Survey Calculation Method:	Minimum Curvature
Well Error:	0.0ft	Output errors are at	2.00 sigma
Reference Wellbore	Wellbore #1	Database:	Landmark
Reference Design:	Plan #2 (4-21-14)	Offset TVD Reference:	Offset Datum

Offset Design				SRC Kelly Farms Pad Sec.4-T5N-R66W - SRC Kelly Farms A-4-3NHZ - Wellbore #1 - Plan #2 (4-21-14)										Offset Site Error:		0.0 ft
Survey Program: 0-MWD														Offset Well Error:		0.0 ft
Reference		Offset		Semi Major Axis			Distance							Warning		
Measured Depth (ft)	Vertical Depth (ft)	Measured Depth (ft)	Vertical Depth (ft)	Reference (ft)	Offset (ft)	Highside Toolface (°)	Offset Wellbore Centre +N/-S (ft)	+E/-W (ft)	Between Centres (ft)	Between Ellipses (ft)	Minimum Separation (ft)	Separation Factor				
5,100.0	5,092.9	5,083.6	5,057.7	11.1	14.3	-3.61	518.9	6.5	692.1	666.7	25.41	27.239				
5,200.0	5,192.9	5,215.4	5,189.4	11.3	14.6	-3.59	522.4	6.5	694.8	669.0	25.83	26.901				
5,300.0	5,292.9	5,318.0	5,291.9	11.5	14.7	-3.59	522.4	6.5	694.8	668.6	26.19	26.527				
5,400.0	5,392.9	5,418.0	5,391.9	11.7	14.9	-3.59	522.4	6.5	694.8	668.2	26.57	26.151				
5,500.0	5,492.9	5,518.0	5,491.9	11.9	15.1	-3.59	522.4	6.5	694.8	667.9	26.95	25.783				
5,600.0	5,592.9	5,618.0	5,591.9	12.1	15.2	-3.59	522.4	6.5	694.8	667.5	27.33	25.424				
5,700.0	5,692.9	5,718.0	5,691.9	12.3	15.4	-3.59	522.4	6.5	694.8	667.1	27.71	25.072				
5,800.0	5,792.9	5,818.0	5,791.9	12.5	15.6	-3.59	522.4	6.5	694.8	666.7	28.10	24.729				
5,900.0	5,892.9	5,918.0	5,891.9	12.7	15.8	-3.59	522.4	6.5	694.8	666.3	28.48	24.393				
6,000.0	5,992.9	6,018.0	5,991.9	12.9	16.0	-3.59	522.4	6.5	694.8	665.9	28.87	24.065				
6,100.0	6,092.9	6,118.0	6,091.9	13.2	16.1	-3.59	522.4	6.5	694.8	665.5	29.26	23.744				
6,200.0	6,192.9	6,218.0	6,191.9	13.4	16.3	-3.59	522.4	6.5	694.8	665.2	29.65	23.431				
6,300.0	6,292.9	6,321.0	6,294.9	13.6	16.5	-3.41	522.4	8.6	694.7	664.6	30.05	23.121				
6,400.0	6,392.9	6,424.5	6,397.5	13.8	16.7	-2.27	522.4	22.5	694.0	663.6	30.43	22.807				
6,500.0	6,492.9	6,523.1	6,492.7	14.0	16.9	-0.19	522.4	47.7	693.5	662.6	30.81	22.507				
6,507.7	6,500.7	6,530.5	6,499.7	14.0	16.9	-90.05	522.4	50.0	693.4	665.0	28.46	24.363				
6,600.0	6,592.7	6,616.4	6,579.5	14.2	17.1	-87.74	522.4	81.9	694.1	665.2	28.89	24.028				
6,700.0	6,690.8	6,707.1	6,659.6	14.4	17.3	-85.41	522.4	124.4	695.9	666.5	29.41	23.663				
6,800.0	6,785.3	6,795.8	6,732.9	14.7	17.5	-83.28	522.4	174.2	698.7	668.6	30.04	23.258				
6,900.0	6,874.4	6,882.8	6,799.1	15.1	17.9	-81.39	522.4	230.6	701.9	671.1	30.84	22.762				
7,000.0	6,956.2	6,968.5	6,858.1	15.5	18.3	-79.76	522.4	292.6	705.3	673.4	31.87	22.130				
7,100.0	7,029.4	7,050.0	6,908.0	16.1	18.9	-78.44	522.4	357.0	708.5	675.3	33.19	21.343				
7,200.0	7,092.3	7,136.8	6,953.7	17.0	19.8	-77.35	522.4	430.7	711.2	676.2	35.01	20.317				
7,300.0	7,143.8	7,219.9	6,990.0	18.2	20.9	-76.60	522.4	505.5	713.3	676.1	37.26	19.144				
7,400.0	7,182.9	7,300.0	7,017.7	19.7	22.1	-76.18	522.4	580.6	714.6	674.7	39.96	17.883				
7,500.0	7,208.8	7,385.3	7,038.8	21.5	23.6	-76.06	522.4	663.3	715.0	671.8	43.23	16.538				
7,600.0	7,221.0	7,468.0	7,051.1	23.4	25.2	-76.27	522.4	745.0	714.4	667.6	46.86	15.248				
7,697.8	7,223.6	7,549.3	7,055.0	25.5	26.8	-76.42	522.4	826.1	714.0	663.4	50.60	14.112				
7,700.0	7,222.0	7,551.8	7,055.0	25.5	26.9	-76.55	522.4	828.7	713.7	662.9	50.72	14.070				
7,800.0	7,222.0	7,652.4	7,055.0	27.8	29.1	-76.55	522.3	929.2	713.6	658.6	55.09	12.953				
7,900.0	7,222.0	7,752.4	7,055.0	30.1	31.4	-76.55	522.2	1,029.2	713.6	654.0	59.62	11.969				
8,000.0	7,222.0	7,852.4	7,055.0	32.5	33.7	-76.55	522.1	1,129.2	713.6	649.3	64.30	11.098				
8,100.0	7,222.0	7,952.4	7,055.0	35.0	36.1	-76.55	521.9	1,229.2	713.6	644.5	69.09	10.328				
8,200.0	7,222.0	8,052.4	7,055.0	37.5	38.6	-76.55	521.8	1,329.2	713.6	639.6	73.98	9.645				
8,300.0	7,222.0	8,152.4	7,055.0	40.1	41.1	-76.55	521.7	1,429.2	713.6	634.6	78.95	9.038				
8,400.0	7,222.0	8,252.4	7,055.0	42.6	43.7	-76.55	521.5	1,529.2	713.6	629.6	83.98	8.497				
8,500.0	7,222.0	8,352.4	7,055.0	45.3	46.3	-76.55	521.4	1,629.2	713.5	624.5	89.06	8.011				
8,600.0	7,222.0	8,452.4	7,055.0	47.9	48.9	-76.55	521.3	1,729.2	713.5	619.3	94.19	7.575				
8,700.0	7,222.0	8,552.4	7,055.0	50.5	51.5	-76.55	521.1	1,829.2	713.5	614.1	99.36	7.181				
8,800.0	7,222.0	8,652.4	7,055.0	53.2	54.1	-76.55	521.0	1,929.2	713.5	608.9	104.55	6.824				
8,900.0	7,222.0	8,752.4	7,055.0	55.9	56.8	-76.55	520.9	2,029.2	713.5	603.7	109.78	6.499				
9,000.0	7,222.0	8,852.4	7,055.0	58.6	59.5	-76.55	520.8	2,129.2	713.5	598.4	115.02	6.203				
9,100.0	7,222.0	8,952.4	7,055.0	61.3	62.2	-76.55	520.6	2,229.2	713.4	593.2	120.29	5.931				
9,200.0	7,222.0	9,052.4	7,055.0	64.0	64.9	-76.55	520.5	2,329.2	713.4	587.8	125.58	5.681				
9,300.0	7,222.0	9,152.4	7,055.0	66.7	67.6	-76.54	520.4	2,429.2	713.4	582.5	130.88	5.451				
9,400.0	7,222.0	9,252.4	7,055.0	69.5	70.3	-76.54	520.2	2,529.2	713.4	577.2	136.19	5.238				
9,500.0	7,222.0	9,352.4	7,055.0	72.2	73.0	-76.54	520.1	2,629.2	713.4	571.9	141.52	5.041				
9,600.0	7,222.0	9,452.4	7,055.0	74.9	75.7	-76.54	520.0	2,729.2	713.4	566.5	146.86	4.857				
9,700.0	7,222.0	9,552.4	7,055.0	77.7	78.5	-76.54	519.8	2,829.2	713.3	561.1	152.21	4.687				
9,800.0	7,222.0	9,652.4	7,055.0	80.4	81.2	-76.54	519.7	2,929.2	713.3	555.8	157.56	4.527				

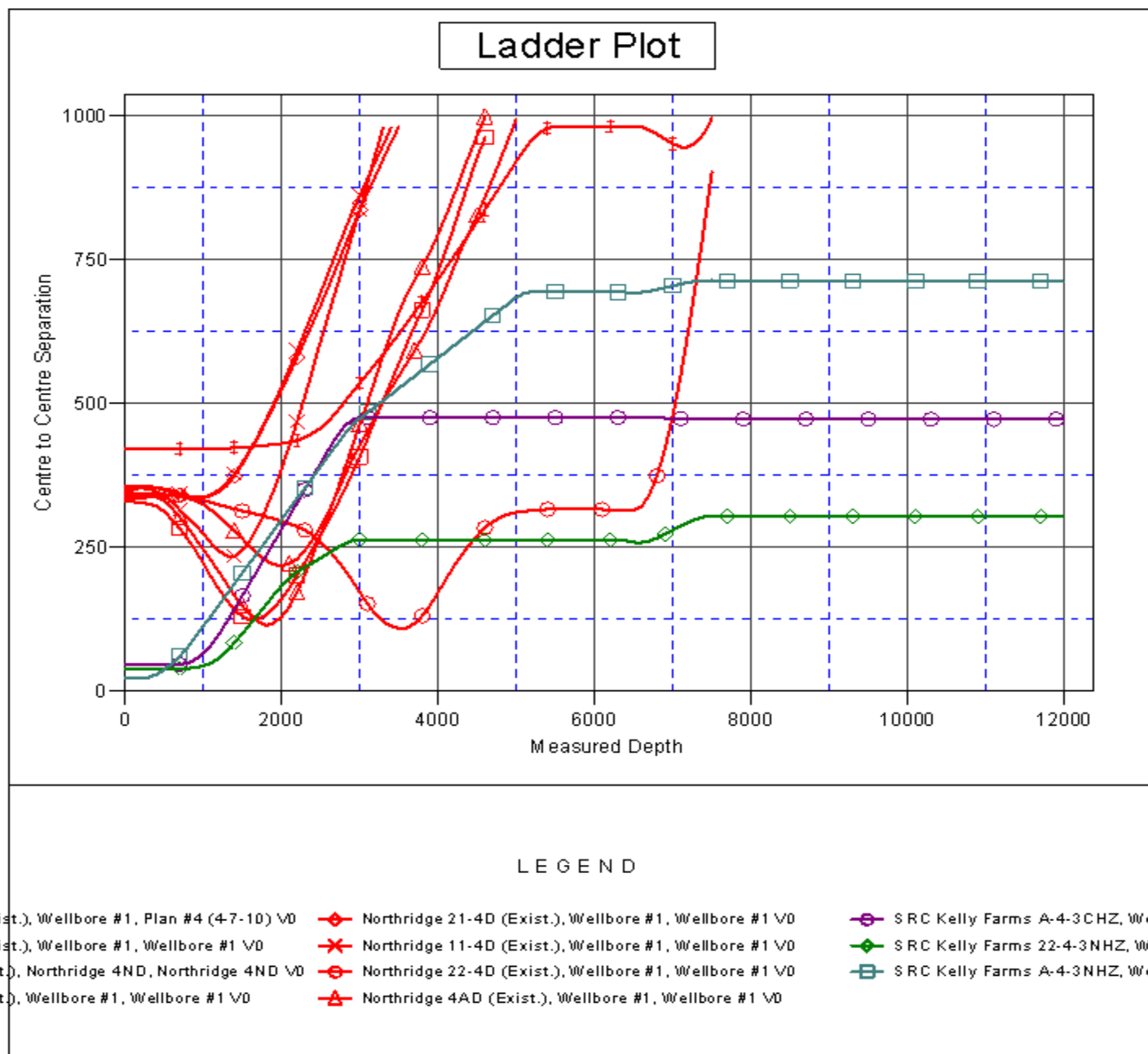
CC - Min centre to center distance or convergent point, SF - min separation factor, ES - min ellipse separation

Company:	Synergy Resources	Local Co-ordinate Reference:	Well SRC Kelly Farms 22-4-3CHZ
Project:	SEC.4-T5N-R66W	TVD Reference:	WELL @ 4767.5ft (Ensign Rig #131 - RKB - 13.5')
Reference Site:	SRC Kelly Farms Pad Sec.4-T5N-R66W	MD Reference:	WELL @ 4767.5ft (Ensign Rig #131 - RKB - 13.5')
Site Error:	0.0ft	North Reference:	True
Reference Well:	SRC Kelly Farms 22-4-3CHZ	Survey Calculation Method:	Minimum Curvature
Well Error:	0.0ft	Output errors are at	2.00 sigma
Reference Wellbore	Wellbore #1	Database:	Landmark
Reference Design:	Plan #2 (4-21-14)	Offset TVD Reference:	Offset Datum

Offset Design		SRC Kelly Farms Pad Sec.4-T5N-R66W - SRC Kelly Farms A-4-3NHZ - Wellbore #1 - Plan #2 (4-21-14)										Offset Site Error:		0.0 ft	
Survey Program:		0-MWD										Offset Well Error:		0.0 ft	
Reference		Offset		Semi Major Axis			Distance							Warning	
Measured Depth	Vertical Depth	Measured Depth	Vertical Depth	Reference	Offset	Highside Toolface	Offset Wellbore Centre		Between Centres	Between Ellipses	Minimum Separation	Separation Factor			
(ft)	(ft)	(ft)	(ft)	(ft)	(ft)	(°)	+N/-S (ft)	+E/-W (ft)	(ft)	(ft)	(ft)				
9,900.0	7,222.0	9,752.4	7,055.0	83.2	83.9	-76.54	519.6	3,029.2	713.3	550.4	162.93	4.378			
10,000.0	7,222.0	9,852.4	7,055.0	85.9	86.7	-76.54	519.5	3,129.2	713.3	545.0	168.30	4.238			
10,100.0	7,222.0	9,952.4	7,055.0	88.7	89.4	-76.54	519.3	3,229.2	713.3	539.6	173.68	4.107			
10,200.0	7,222.0	10,052.4	7,055.0	91.5	92.2	-76.54	519.2	3,329.2	713.3	534.2	179.06	3.983			
10,300.0	7,222.0	10,152.4	7,055.0	94.2	95.0	-76.54	519.1	3,429.2	713.2	528.8	184.45	3.867			
10,400.0	7,222.0	10,252.4	7,055.0	97.0	97.7	-76.54	518.9	3,529.2	713.2	523.4	189.85	3.757			
10,500.0	7,222.0	10,352.4	7,055.0	99.8	100.5	-76.54	518.8	3,629.2	713.2	518.0	195.25	3.653			
10,600.0	7,222.0	10,452.4	7,055.0	102.5	103.3	-76.54	518.7	3,729.2	713.2	512.5	200.65	3.554			
10,700.0	7,222.0	10,552.4	7,055.0	105.3	106.0	-76.54	518.5	3,829.2	713.2	507.1	206.06	3.461			
10,800.0	7,222.0	10,652.4	7,055.0	108.1	108.8	-76.54	518.4	3,929.2	713.2	501.7	211.47	3.372			
10,900.0	7,222.0	10,752.4	7,055.0	110.9	111.6	-76.54	518.3	4,029.2	713.2	496.3	216.88	3.288			
11,000.0	7,222.0	10,852.4	7,055.0	113.7	114.3	-76.54	518.2	4,129.2	713.1	490.8	222.30	3.208			
11,100.0	7,222.0	10,952.4	7,055.0	116.4	117.1	-76.54	518.0	4,229.2	713.1	485.4	227.72	3.132			
11,200.0	7,222.0	11,052.4	7,055.0	119.2	119.9	-76.54	517.9	4,329.2	713.1	480.0	233.14	3.059			
11,300.0	7,222.0	11,152.4	7,055.0	122.0	122.7	-76.54	517.8	4,429.2	713.1	474.5	238.57	2.989			
11,400.0	7,222.0	11,252.4	7,055.0	124.8	125.5	-76.54	517.6	4,529.2	713.1	469.1	244.00	2.922			
11,500.0	7,222.0	11,352.4	7,055.0	127.6	128.2	-76.54	517.5	4,629.2	713.1	463.6	249.43	2.859			
11,600.0	7,222.0	11,452.4	7,055.0	130.4	131.0	-76.54	517.4	4,729.2	713.0	458.2	254.86	2.798			
11,700.0	7,222.0	11,552.4	7,055.0	133.2	133.8	-76.54	517.2	4,829.2	713.0	452.7	260.29	2.739			
11,800.0	7,222.0	11,652.4	7,055.0	135.9	136.6	-76.54	517.1	4,929.2	713.0	447.3	265.73	2.683			
11,900.0	7,222.0	11,752.4	7,055.0	138.7	139.4	-76.54	517.0	5,029.2	713.0	441.8	271.16	2.629			
11,988.0	7,222.0	11,840.4	7,055.0	141.2	141.8	-76.54	516.9	5,117.2	713.0	437.0	275.95	2.584 SF			

Company:	Synergy Resources	Local Co-ordinate Reference:	Well SRC Kelly Farms 22-4-3CHZ
Project:	SEC.4-T5N-R66W	TVD Reference:	WELL @ 4767.5ft (Ensign Rig #131 - RKB - 13.5')
Reference Site:	SRC Kelly Farms Pad Sec.4-T5N-R66W	MD Reference:	WELL @ 4767.5ft (Ensign Rig #131 - RKB - 13.5')
Site Error:	0.0ft	North Reference:	True
Reference Well:	SRC Kelly Farms 22-4-3CHZ	Survey Calculation Method:	Minimum Curvature
Well Error:	0.0ft	Output errors are at	2.00 sigma
Reference Wellbore	Wellbore #1	Database:	Landmark
Reference Design:	Plan #2 (4-21-14)	Offset TVD Reference:	Offset Datum

Reference Depths are relative to WELL @ 4767.5ft (Ensign Rig #131 - Coordinates are relative to: SRC Kelly Farms 22-4-3CHZ
 Offset Depths are relative to Offset Datum
 Central Meridian is -105.500000 °
 Coordinate System is US State Plane 1983, Colorado Northern Zone
 Grid Convergence at Surface is: 0.46°



Company:	Synergy Resources	Local Co-ordinate Reference:	Well SRC Kelly Farms 22-4-3CHZ
Project:	SEC.4-T5N-R66W	TVD Reference:	WELL @ 4767.5ft (Ensign Rig #131 - RKB - 13.5')
Reference Site:	SRC Kelly Farms Pad Sec.4-T5N-R66W	MD Reference:	WELL @ 4767.5ft (Ensign Rig #131 - RKB - 13.5')
Site Error:	0.0ft	North Reference:	True
Reference Well:	SRC Kelly Farms 22-4-3CHZ	Survey Calculation Method:	Minimum Curvature
Well Error:	0.0ft	Output errors are at	2.00 sigma
Reference Wellbore	Wellbore #1	Database:	Landmark
Reference Design:	Plan #2 (4-21-14)	Offset TVD Reference:	Offset Datum

Reference Depths are relative to WELL @ 4767.5ft (Ensign Rig #131 - Coordinates are relative to: SRC Kelly Farms 22-4-3CHZ
 Offset Depths are relative to Offset Datum
 Central Meridian is -105.500000 °
 Coordinate System is US State Plane 1983, Colorado Northern Zone
 Grid Convergence at Surface is: 0.46°

