

Synergy Resources

Well Name: **SRC Kelly Farms A-4-3CHZ**

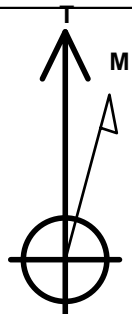
Surface Location: SRC Kelly Farms Pad Sec.4-T5N-R66W
North American Datum 1983 , US State Plane 1983 , Colorado Northern Zone
Ground Elevation: 4752.0

+N/-S	+E/-W	Northing	Easting	Latitude	Longitude	Slot
0.0	0.0	1400855.88	3199151.99	40.431546	-104.784598	

Ensign Rig #131 - RKB - 13.5' WELL @ 4765.5ft (Ensign Rig #131 - RKB - 13.5')

WELLBORE TARGET DETAILS

Name	TVD	+N/-S	+E/-W	Shape
SHL 2122'FNL & 2369'FWL, Sec.4	1.0	0.0	0.0	Point
BHL 1857'FNL & 2127'FWL, Sec. 3	7225.0	266.5	5124.3	Point
Landing Pt. 1857'FNL & 2218'FEL, Sec.4	7225.0	271.8	772.5	Point



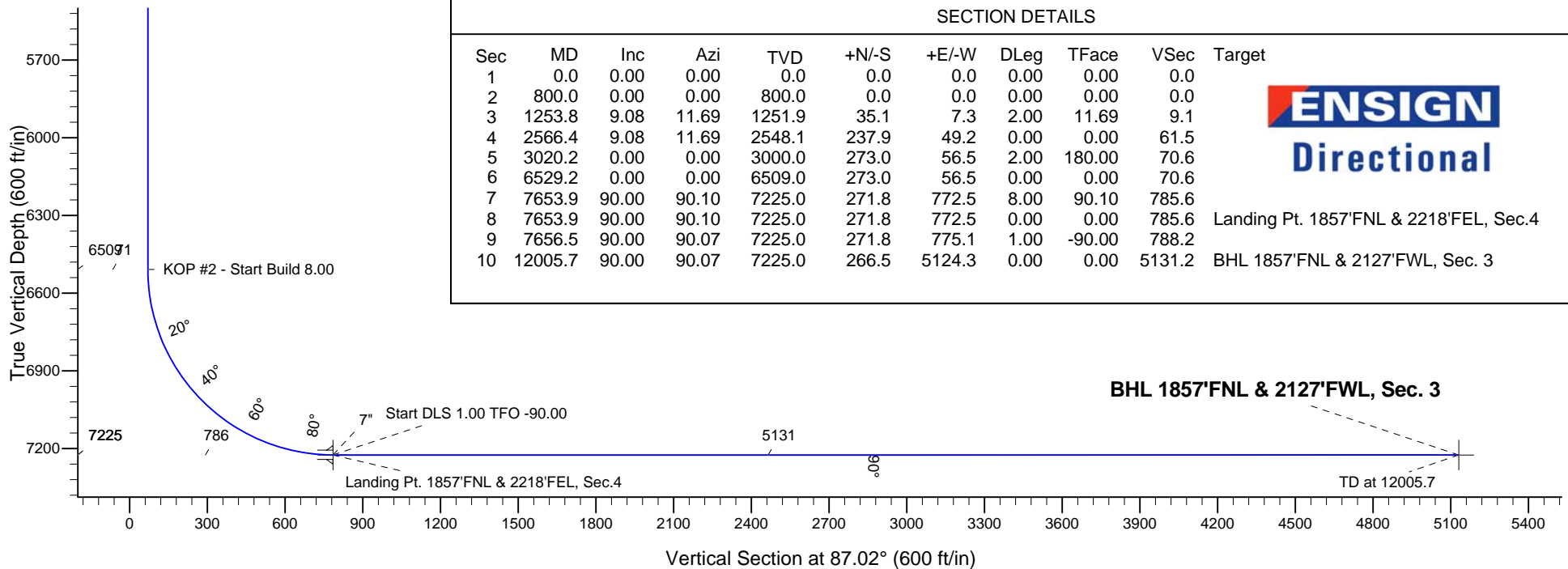
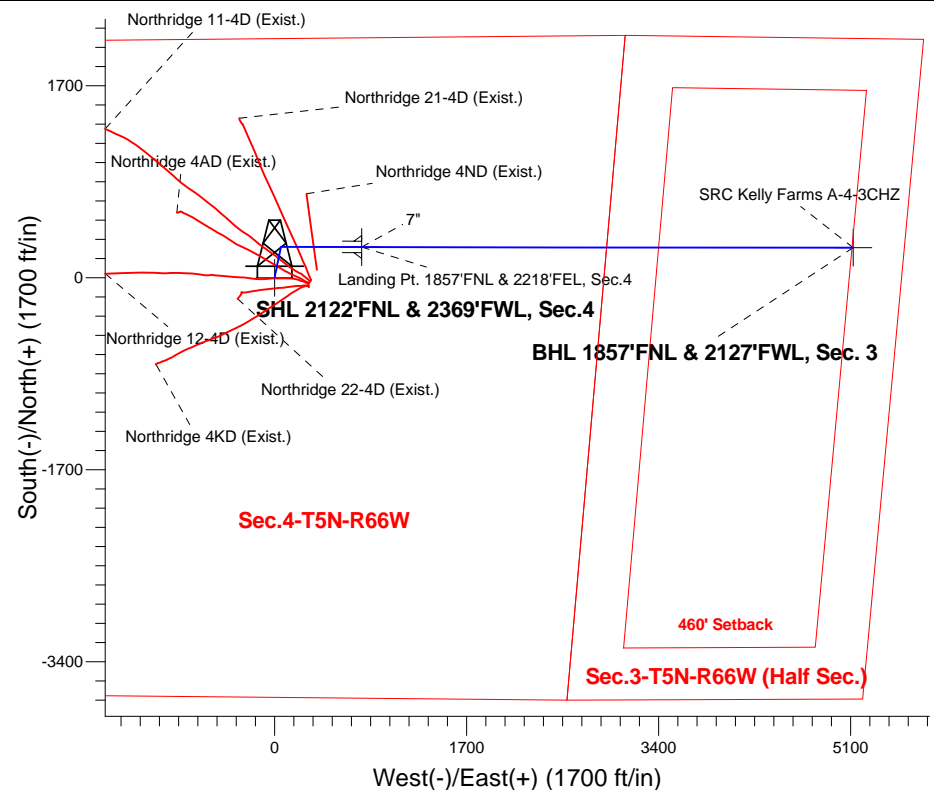
Azimuths to True North
Magnetic North: 8.49°

Magnetic Field
Strength: 52843.8nT
Dip Angle: 66.97°
Date: 4/29/2014
Model: IGRF2010

SRC Kelly Farms Pad Sec.4-T5N-R66W
SRC Kelly Farms A-4-3CHZ
Plan #2 (4-21-14)
16:02, April 29 2014

ANNOTATIONS

TVD	MD	Annotation
800.0	800.0	KOP - Start Build 2.00
2548.1	2566.4	Start Drop -2.00
6509.0	6529.2	KOP #2 - Start Build 8.00
7225.0	7653.9	Start DLS 1.00 TFO -90.00
7225.0	12005.7	TD at 12005.7



ENSIGN
Directional



Synergy Resources

SEC.4-T5N-R66W

SRC Kelly Farms Pad Sec.4-T5N-R66W

SRC Kelly Farms A-4-3CHZ

Wellbore #1

Plan: Plan #2 (4-21-14)

Standard Planning Report

29 April, 2014

Plan Sections										
Measured Depth (ft)	Inclination (°)	Azimuth (°)	Vertical Depth (ft)	+N/-S (ft)	+E/-W (ft)	Dogleg Rate (°/100ft)	Build Rate (°/100ft)	Turn Rate (°/100ft)	TFO (°)	Target
0.0	0.00	0.00	0.0	0.0	0.0	0.00	0.00	0.00	0.00	
800.0	0.00	0.00	800.0	0.0	0.0	0.00	0.00	0.00	0.00	
1,253.8	9.08	11.69	1,251.9	35.1	7.3	2.00	2.00	0.00	11.69	
2,566.4	9.08	11.69	2,548.1	237.9	49.2	0.00	0.00	0.00	0.00	
3,020.2	0.00	0.00	3,000.0	273.0	56.5	2.00	-2.00	0.00	180.00	
6,529.2	0.00	0.00	6,509.0	273.0	56.5	0.00	0.00	0.00	0.00	
7,653.9	90.00	90.10	7,225.0	271.8	772.5	8.00	8.00	0.00	90.10	
7,653.9	90.00	90.10	7,225.0	271.8	772.5	0.00	0.00	0.00	0.00	Landing Pt. 1857'FNL
7,656.5	90.00	90.07	7,225.0	271.8	775.1	1.00	0.00	-1.00	-90.00	
12,005.7	90.00	90.07	7,225.0	266.5	5,124.3	0.00	0.00	0.00	0.00	BHL 1857'FNL & 21°

Database:	Landmark	Local Co-ordinate Reference:	Well SRC Kelly Farms A-4-3CHZ
Company:	Synergy Resources	TVD Reference:	WELL @ 4765.5ft (Ensign Rig #131 - RKB - 13.5')
Project:	SEC.4-T5N-R66W	MD Reference:	WELL @ 4765.5ft (Ensign Rig #131 - RKB - 13.5')
Site:	SRC Kelly Farms Pad Sec.4-T5N-R66W	North Reference:	True
Well:	SRC Kelly Farms A-4-3CHZ	Survey Calculation Method:	Minimum Curvature
Wellbore:	Wellbore #1		
Design:	Plan #2 (4-21-14)		

Planned Survey

Measured Depth (ft)	Inclination (°)	Azimuth (°)	Vertical Depth (ft)	+N/-S (ft)	+E/-W (ft)	Vertical Section (ft)	Dogleg Rate (°/100ft)	Build Rate (°/100ft)	Turn Rate (°/100ft)
0.0	0.00	0.00	0.0	0.0	0.0	0.0	0.00	0.00	0.00
1.0	0.00	0.00	1.0	0.0	0.0	0.0	0.00	0.00	0.00
SHL 2122'FNL & 2369'FWL, Sec.4									
100.0	0.00	0.00	100.0	0.0	0.0	0.0	0.00	0.00	0.00
200.0	0.00	0.00	200.0	0.0	0.0	0.0	0.00	0.00	0.00
300.0	0.00	0.00	300.0	0.0	0.0	0.0	0.00	0.00	0.00
400.0	0.00	0.00	400.0	0.0	0.0	0.0	0.00	0.00	0.00
500.0	0.00	0.00	500.0	0.0	0.0	0.0	0.00	0.00	0.00
600.0	0.00	0.00	600.0	0.0	0.0	0.0	0.00	0.00	0.00
700.0	0.00	0.00	700.0	0.0	0.0	0.0	0.00	0.00	0.00
800.0	0.00	0.00	800.0	0.0	0.0	0.0	0.00	0.00	0.00
KOP - Start Build 2.00									
900.0	2.00	11.69	900.0	1.7	0.4	0.4	2.00	2.00	0.00
1,000.0	4.00	11.69	999.8	6.8	1.4	1.8	2.00	2.00	0.00
1,100.0	6.00	11.69	1,099.5	15.4	3.2	4.0	2.00	2.00	0.00
1,200.0	8.00	11.69	1,198.7	27.3	5.7	7.1	2.00	2.00	0.00
1,253.8	9.08	11.69	1,251.9	35.1	7.3	9.1	2.00	2.00	0.00
1,300.0	9.08	11.69	1,297.5	42.3	8.7	10.9	0.00	0.00	0.00
1,400.0	9.08	11.69	1,396.3	57.7	11.9	14.9	0.00	0.00	0.00
1,500.0	9.08	11.69	1,495.0	73.2	15.1	18.9	0.00	0.00	0.00
1,600.0	9.08	11.69	1,593.8	88.6	18.3	22.9	0.00	0.00	0.00
1,700.0	9.08	11.69	1,692.5	104.0	21.5	26.9	0.00	0.00	0.00
1,800.0	9.08	11.69	1,791.3	119.5	24.7	30.9	0.00	0.00	0.00
1,900.0	9.08	11.69	1,890.0	134.9	27.9	34.9	0.00	0.00	0.00
2,000.0	9.08	11.69	1,988.8	150.4	31.1	38.9	0.00	0.00	0.00
2,100.0	9.08	11.69	2,087.5	165.8	34.3	42.9	0.00	0.00	0.00
2,200.0	9.08	11.69	2,186.3	181.3	37.5	46.9	0.00	0.00	0.00
2,300.0	9.08	11.69	2,285.0	196.7	40.7	50.9	0.00	0.00	0.00
2,400.0	9.08	11.69	2,383.8	212.2	43.9	54.9	0.00	0.00	0.00
2,500.0	9.08	11.69	2,482.5	227.6	47.1	58.9	0.00	0.00	0.00
2,566.4	9.08	11.69	2,548.1	237.9	49.2	61.5	0.00	0.00	0.00
Start Drop -2.00									
2,600.0	8.40	11.69	2,581.3	242.9	50.3	62.8	2.00	-2.00	0.00
2,700.0	6.40	11.69	2,680.4	255.5	52.9	66.1	2.00	-2.00	0.00
2,800.0	4.40	11.69	2,780.0	264.7	54.8	68.5	2.00	-2.00	0.00
2,900.0	2.40	11.69	2,879.8	270.5	56.0	70.0	2.00	-2.00	0.00
3,000.0	0.40	11.69	2,979.8	272.9	56.5	70.6	2.00	-2.00	0.00
3,020.2	0.00	0.00	3,000.0	273.0	56.5	70.6	2.00	-2.00	0.00
3,100.0	0.00	0.00	3,079.8	273.0	56.5	70.6	0.00	0.00	0.00
3,200.0	0.00	0.00	3,179.8	273.0	56.5	70.6	0.00	0.00	0.00
3,300.0	0.00	0.00	3,279.8	273.0	56.5	70.6	0.00	0.00	0.00
3,400.0	0.00	0.00	3,379.8	273.0	56.5	70.6	0.00	0.00	0.00
3,500.0	0.00	0.00	3,479.8	273.0	56.5	70.6	0.00	0.00	0.00
3,600.0	0.00	0.00	3,579.8	273.0	56.5	70.6	0.00	0.00	0.00
3,700.0	0.00	0.00	3,679.8	273.0	56.5	70.6	0.00	0.00	0.00
3,800.0	0.00	0.00	3,779.8	273.0	56.5	70.6	0.00	0.00	0.00
3,900.0	0.00	0.00	3,879.8	273.0	56.5	70.6	0.00	0.00	0.00
4,000.0	0.00	0.00	3,979.8	273.0	56.5	70.6	0.00	0.00	0.00
4,100.0	0.00	0.00	4,079.8	273.0	56.5	70.6	0.00	0.00	0.00
4,200.0	0.00	0.00	4,179.8	273.0	56.5	70.6	0.00	0.00	0.00
4,300.0	0.00	0.00	4,279.8	273.0	56.5	70.6	0.00	0.00	0.00
4,400.0	0.00	0.00	4,379.8	273.0	56.5	70.6	0.00	0.00	0.00

Database:	Landmark	Local Co-ordinate Reference:	Well SRC Kelly Farms A-4-3CHZ
Company:	Synergy Resources	TVD Reference:	WELL @ 4765.5ft (Ensign Rig #131 - RKB - 13.5')
Project:	SEC.4-T5N-R66W	MD Reference:	WELL @ 4765.5ft (Ensign Rig #131 - RKB - 13.5')
Site:	SRC Kelly Farms Pad Sec.4-T5N-R66W	North Reference:	True
Well:	SRC Kelly Farms A-4-3CHZ	Survey Calculation Method:	Minimum Curvature
Wellbore:	Wellbore #1		
Design:	Plan #2 (4-21-14)		

Planned Survey									
Measured Depth (ft)	Inclination (°)	Azimuth (°)	Vertical Depth (ft)	+N/-S (ft)	+E/-W (ft)	Vertical Section (ft)	Dogleg Rate (°/100ft)	Build Rate (°/100ft)	Turn Rate (°/100ft)
4,500.0	0.00	0.00	4,479.8	273.0	56.5	70.6	0.00	0.00	0.00
4,600.0	0.00	0.00	4,579.8	273.0	56.5	70.6	0.00	0.00	0.00
4,700.0	0.00	0.00	4,679.8	273.0	56.5	70.6	0.00	0.00	0.00
4,800.0	0.00	0.00	4,779.8	273.0	56.5	70.6	0.00	0.00	0.00
4,900.0	0.00	0.00	4,879.8	273.0	56.5	70.6	0.00	0.00	0.00
5,000.0	0.00	0.00	4,979.8	273.0	56.5	70.6	0.00	0.00	0.00
5,100.0	0.00	0.00	5,079.8	273.0	56.5	70.6	0.00	0.00	0.00
5,200.0	0.00	0.00	5,179.8	273.0	56.5	70.6	0.00	0.00	0.00
5,300.0	0.00	0.00	5,279.8	273.0	56.5	70.6	0.00	0.00	0.00
5,400.0	0.00	0.00	5,379.8	273.0	56.5	70.6	0.00	0.00	0.00
5,500.0	0.00	0.00	5,479.8	273.0	56.5	70.6	0.00	0.00	0.00
5,600.0	0.00	0.00	5,579.8	273.0	56.5	70.6	0.00	0.00	0.00
5,700.0	0.00	0.00	5,679.8	273.0	56.5	70.6	0.00	0.00	0.00
5,800.0	0.00	0.00	5,779.8	273.0	56.5	70.6	0.00	0.00	0.00
5,900.0	0.00	0.00	5,879.8	273.0	56.5	70.6	0.00	0.00	0.00
6,000.0	0.00	0.00	5,979.8	273.0	56.5	70.6	0.00	0.00	0.00
6,100.0	0.00	0.00	6,079.8	273.0	56.5	70.6	0.00	0.00	0.00
6,200.0	0.00	0.00	6,179.8	273.0	56.5	70.6	0.00	0.00	0.00
6,300.0	0.00	0.00	6,279.8	273.0	56.5	70.6	0.00	0.00	0.00
6,400.0	0.00	0.00	6,379.8	273.0	56.5	70.6	0.00	0.00	0.00
6,500.0	0.00	0.00	6,479.8	273.0	56.5	70.6	0.00	0.00	0.00
6,529.2	0.00	0.00	6,509.0	273.0	56.5	70.6	0.00	0.00	0.00
KOP #2 - Start Build 8.00									
6,600.0	5.67	90.10	6,579.7	273.0	60.0	74.1	8.00	8.00	0.00
6,700.0	13.67	90.10	6,678.2	273.0	76.8	90.8	8.00	8.00	0.00
6,800.0	21.67	90.10	6,773.4	272.9	107.1	121.1	8.00	8.00	0.00
6,900.0	29.67	90.10	6,863.4	272.8	150.4	164.4	8.00	8.00	0.00
7,000.0	37.67	90.10	6,946.6	272.8	205.8	219.7	8.00	8.00	0.00
7,100.0	45.68	90.10	7,021.2	272.6	272.2	286.0	8.00	8.00	0.00
7,200.0	53.68	90.10	7,085.9	272.5	348.4	362.1	8.00	8.00	0.00
7,300.0	61.68	90.10	7,139.3	272.4	432.8	446.4	8.00	8.00	0.00
7,400.0	69.68	90.10	7,180.4	272.2	523.9	537.3	8.00	8.00	0.00
7,500.0	77.68	90.10	7,208.5	272.1	619.8	633.1	8.00	8.00	0.00
7,600.0	85.68	90.10	7,223.0	271.9	718.6	731.8	8.00	8.00	0.00
7,653.9	90.00	90.10	7,225.0	271.8	772.5	785.6	8.00	8.00	0.00
Start DLS 1.00 TFO -90.00 - 7" - Landing Pt. 1857'FNL & 2218'FEL, Sec.4									
7,656.5	90.00	90.07	7,225.0	271.8	775.1	788.2	1.00	0.09	-1.00
7,700.0	90.00	90.07	7,225.0	271.7	818.6	831.6	0.00	0.00	0.00
7,800.0	90.00	90.07	7,225.0	271.6	918.6	931.5	0.00	0.00	0.00
7,900.0	90.00	90.07	7,225.0	271.5	1,018.6	1,031.3	0.00	0.00	0.00
8,000.0	90.00	90.07	7,225.0	271.4	1,118.6	1,131.2	0.00	0.00	0.00
8,100.0	90.00	90.07	7,225.0	271.3	1,218.6	1,231.0	0.00	0.00	0.00
8,200.0	90.00	90.07	7,225.0	271.1	1,318.6	1,330.9	0.00	0.00	0.00
8,300.0	90.00	90.07	7,225.0	271.0	1,418.6	1,430.8	0.00	0.00	0.00
8,400.0	90.00	90.07	7,225.0	270.9	1,518.6	1,530.6	0.00	0.00	0.00
8,500.0	90.00	90.07	7,225.0	270.8	1,618.6	1,630.5	0.00	0.00	0.00
8,600.0	90.00	90.07	7,225.0	270.6	1,718.6	1,730.3	0.00	0.00	0.00
8,700.0	90.00	90.07	7,225.0	270.5	1,818.6	1,830.2	0.00	0.00	0.00
8,800.0	90.00	90.07	7,225.0	270.4	1,918.6	1,930.1	0.00	0.00	0.00
8,900.0	90.00	90.07	7,225.0	270.3	2,018.6	2,029.9	0.00	0.00	0.00
9,000.0	90.00	90.07	7,225.0	270.2	2,118.6	2,129.8	0.00	0.00	0.00
9,100.0	90.00	90.07	7,225.0	270.0	2,218.6	2,229.6	0.00	0.00	0.00

Database:	Landmark	Local Co-ordinate Reference:	Well SRC Kelly Farms A-4-3CHZ
Company:	Synergy Resources	TVD Reference:	WELL @ 4765.5ft (Ensign Rig #131 - RKB - 13.5')
Project:	SEC.4-T5N-R66W	MD Reference:	WELL @ 4765.5ft (Ensign Rig #131 - RKB - 13.5')
Site:	SRC Kelly Farms Pad Sec.4-T5N-R66W	North Reference:	True
Well:	SRC Kelly Farms A-4-3CHZ	Survey Calculation Method:	Minimum Curvature
Wellbore:	Wellbore #1		
Design:	Plan #2 (4-21-14)		

Planned Survey

Measured Depth (ft)	Inclination (°)	Azimuth (°)	Vertical Depth (ft)	+N/-S (ft)	+E/-W (ft)	Vertical Section (ft)	Dogleg Rate (°/100ft)	Build Rate (°/100ft)	Turn Rate (°/100ft)
9,200.0	90.00	90.07	7,225.0	269.9	2,318.6	2,329.5	0.00	0.00	0.00
9,300.0	90.00	90.07	7,225.0	269.8	2,418.6	2,429.3	0.00	0.00	0.00
9,400.0	90.00	90.07	7,225.0	269.7	2,518.6	2,529.2	0.00	0.00	0.00
9,500.0	90.00	90.07	7,225.0	269.6	2,618.6	2,629.1	0.00	0.00	0.00
9,600.0	90.00	90.07	7,225.0	269.4	2,718.6	2,728.9	0.00	0.00	0.00
9,700.0	90.00	90.07	7,225.0	269.3	2,818.6	2,828.8	0.00	0.00	0.00
9,800.0	90.00	90.07	7,225.0	269.2	2,918.6	2,928.6	0.00	0.00	0.00
9,900.0	90.00	90.07	7,225.0	269.1	3,018.6	3,028.5	0.00	0.00	0.00
10,000.0	90.00	90.07	7,225.0	268.9	3,118.6	3,128.4	0.00	0.00	0.00
10,100.0	90.00	90.07	7,225.0	268.8	3,218.6	3,228.2	0.00	0.00	0.00
10,200.0	90.00	90.07	7,225.0	268.7	3,318.6	3,328.1	0.00	0.00	0.00
10,300.0	90.00	90.07	7,225.0	268.6	3,418.6	3,427.9	0.00	0.00	0.00
10,400.0	90.00	90.07	7,225.0	268.5	3,518.6	3,527.8	0.00	0.00	0.00
10,500.0	90.00	90.07	7,225.0	268.3	3,618.6	3,627.6	0.00	0.00	0.00
10,600.0	90.00	90.07	7,225.0	268.2	3,718.6	3,727.5	0.00	0.00	0.00
10,700.0	90.00	90.07	7,225.0	268.1	3,818.6	3,827.4	0.00	0.00	0.00
10,800.0	90.00	90.07	7,225.0	268.0	3,918.6	3,927.2	0.00	0.00	0.00
10,900.0	90.00	90.07	7,225.0	267.8	4,018.6	4,027.1	0.00	0.00	0.00
11,000.0	90.00	90.07	7,225.0	267.7	4,118.6	4,126.9	0.00	0.00	0.00
11,100.0	90.00	90.07	7,225.0	267.6	4,218.6	4,226.8	0.00	0.00	0.00
11,200.0	90.00	90.07	7,225.0	267.5	4,318.6	4,326.7	0.00	0.00	0.00
11,300.0	90.00	90.07	7,225.0	267.4	4,418.6	4,426.5	0.00	0.00	0.00
11,400.0	90.00	90.07	7,225.0	267.2	4,518.6	4,526.4	0.00	0.00	0.00
11,500.0	90.00	90.07	7,225.0	267.1	4,618.6	4,626.2	0.00	0.00	0.00
11,600.0	90.00	90.07	7,225.0	267.0	4,718.6	4,726.1	0.00	0.00	0.00
11,700.0	90.00	90.07	7,225.0	266.9	4,818.6	4,826.0	0.00	0.00	0.00
11,800.0	90.00	90.07	7,225.0	266.7	4,918.6	4,925.8	0.00	0.00	0.00
11,900.0	90.00	90.07	7,225.0	266.6	5,018.6	5,025.7	0.00	0.00	0.00
12,000.0	90.00	90.07	7,225.0	266.5	5,118.6	5,125.5	0.00	0.00	0.00
12,005.7	90.00	90.07	7,225.0	266.5	5,124.3	5,131.2	0.00	0.00	0.00

TD at 12005.7 - BHL 1857'FNL & 2127'FWL, Sec. 3

Casing Points

Measured Depth (ft)	Vertical Depth (ft)	Name	Casing Diameter (")	Hole Diameter (")
7,653.9	7,225.0	7"	7	7-1/2

Plan Annotations

Measured Depth (ft)	Vertical Depth (ft)	+N/-S (ft)	+E/-W (ft)	Comment
800.0	800.0	0.0	0.0	KOP - Start Build 2.00
2,566.4	2,548.1	237.9	49.2	Start Drop -2.00
6,529.2	6,509.0	273.0	56.5	KOP #2 - Start Build 8.00
7,653.9	7,225.0	271.8	772.5	Start DLS 1.00 TFO -90.00
12,005.7	7,225.0	266.5	5,124.3	TD at 12005.7



Synergy Resources

SEC.4-T5N-R66W

SRC Kelly Farms Pad Sec.4-T5N-R66W

SRC Kelly Farms A-4-3CHZ

Wellbore #1

Plan #2 (4-21-14)

Anticollision Report

29 April, 2014

Company:	Synergy Resources	Local Co-ordinate Reference:	Well SRC Kelly Farms A-4-3CHZ
Project:	SEC.4-T5N-R66W	TVD Reference:	WELL @ 4765.5ft (Ensign Rig #131 - RKB - 13.5')
Reference Site:	SRC Kelly Farms Pad Sec.4-T5N-R66W	MD Reference:	WELL @ 4765.5ft (Ensign Rig #131 - RKB - 13.5')
Site Error:	0.0ft	North Reference:	True
Reference Well:	SRC Kelly Farms A-4-3CHZ	Survey Calculation Method:	Minimum Curvature
Well Error:	0.0ft	Output errors are at	2.00 sigma
Reference Wellbore	Wellbore #1	Database:	Landmark
Reference Design:	Plan #2 (4-21-14)	Offset TVD Reference:	Offset Datum

Offset Design Northridge Pad Sec.4-T5N-R66W - Northridge 11-4D (Exist.) - Wellbore #1 - Wellbore #1													Offset Site Error: 0.0ft
Survey Program: 147-MWD													Offset Well Error: 0.0ft
Reference	Offset	Semi Major Axis		Distance		Warning							
Measured Depth (ft)	Vertical Depth (ft)	Measured Depth (ft)	Vertical Depth (ft)	Reference (ft)	Offset (ft)	Highside Toolface (°)	Offset Wellbore Centre +N/-S (ft)	+E/-W (ft)	Between Centres (ft)	Between Ellipses (ft)	Minimum Separation (ft)	Separation Factor	
100.0	100.0	83.2	83.1	0.1	0.1	95.93	-32.9	316.8	318.5	318.3	0.21	1,522.965	
200.0	200.0	184.4	184.3	0.3	0.2	96.17	-34.4	318.5	320.3	319.8	0.58	549.062	
300.0	300.0	297.4	297.3	0.6	0.5	96.13	-34.1	317.2	319.2	318.2	1.04	307.147	
400.0	400.0	407.0	406.7	0.8	0.7	95.46	-29.9	312.5	314.5	313.0	1.50	209.249	
500.0	500.0	520.6	519.7	1.0	1.0	94.02	-21.3	303.9	306.3	304.3	2.01	152.481	
600.0	600.0	629.7	627.5	1.2	1.4	91.91	-9.7	291.4	294.3	291.7	2.55	115.208	
700.0	700.0	732.1	728.1	1.5	1.7	89.59	2.0	276.8	279.7	276.6	3.11	89.907	
800.0	800.0	828.8	823.3	1.7	2.1	87.25	12.6	263.4	266.1	262.4	3.64	73.076	
900.0	900.0	935.0	927.3	1.9	2.5	72.82	26.8	247.3	251.4	247.2	4.16	60.466	
1,000.0	999.8	1,045.4	1,034.7	2.1	3.0	70.72	40.0	225.6	231.5	226.7	4.80	48.264	
1,100.0	1,099.5	1,148.6	1,134.0	2.4	3.5	68.92	53.1	200.7	206.5	201.1	5.45	37.877	
1,200.0	1,198.7	1,247.9	1,228.5	2.6	4.1	66.67	68.2	174.2	178.6	172.4	6.17	28.928	
1,300.0	1,297.5	1,344.1	1,318.9	2.9	4.8	62.75	86.4	146.6	148.6	141.6	7.01	21.190	
1,400.0	1,396.3	1,437.6	1,405.8	3.2	5.4	55.50	106.5	118.8	119.6	111.5	8.04	14.875	
1,500.0	1,495.0	1,531.7	1,492.3	3.5	6.2	42.16	130.0	90.2	94.7	85.5	9.26	10.226	
1,600.0	1,593.8	1,625.6	1,578.2	3.8	6.9	21.41	153.6	60.5	77.5	67.1	10.39	7.464	
1,656.8	1,649.9	1,678.0	1,625.7	4.0	7.3	6.43	167.1	43.1	74.3	63.6	10.71	6.938	CC, ES, SF
1,700.0	1,692.5	1,717.5	1,661.5	4.1	7.7	-5.11	177.5	29.8	76.2	65.5	10.74	7.096	
1,800.0	1,791.3	1,811.1	1,746.1	4.5	8.5	-28.44	201.8	-2.1	92.5	82.1	10.41	8.886	
1,900.0	1,890.0	1,902.0	1,828.1	4.8	9.3	-44.13	223.9	-34.3	119.3	109.1	10.23	11.663	
2,000.0	1,988.8	1,991.9	1,908.7	5.1	10.1	-53.70	247.1	-66.5	153.1	142.6	10.44	14.659	
2,100.0	2,087.5	2,085.1	1,992.3	5.5	10.9	-59.78	271.9	-99.4	189.7	178.8	10.90	17.393	
2,200.0	2,186.3	2,173.2	2,071.6	5.8	11.6	-63.90	294.6	-130.8	227.2	215.7	11.48	19.785	
2,300.0	2,285.0	2,261.9	2,150.4	6.2	12.4	-66.47	319.8	-162.7	267.3	255.2	12.13	22.032	
2,400.0	2,383.8	2,357.9	2,235.6	6.5	13.3	-67.94	349.4	-195.3	307.4	294.5	12.82	23.969	
2,500.0	2,482.5	2,454.6	2,322.6	6.9	14.1	-69.81	374.9	-228.9	345.8	332.3	13.54	25.537	
2,600.0	2,581.3	2,543.0	2,402.5	7.2	14.9	-71.86	395.6	-260.6	384.2	370.0	14.26	26.951	
2,700.0	2,680.4	2,632.0	2,482.3	7.5	15.7	-73.69	417.6	-293.1	424.8	409.9	14.91	28.490	
2,800.0	2,780.0	2,716.7	2,558.2	7.7	16.5	-74.77	439.8	-323.6	466.6	451.0	15.51	30.090	
2,900.0	2,879.8	2,791.2	2,623.8	7.9	17.2	-75.22	462.2	-350.8	511.4	495.4	16.01	31.940	
3,000.0	2,979.8	2,862.0	2,684.8	8.1	17.9	-75.32	486.0	-377.7	560.1	543.6	16.47	34.014	
3,100.0	3,079.8	2,953.5	2,763.2	8.3	18.9	-62.47	517.6	-412.9	610.4	584.8	25.66	23.794	
3,200.0	3,179.8	3,080.9	2,875.5	8.4	20.1	-61.17	556.6	-458.7	656.5	629.4	27.09	24.235	
3,300.0	3,279.8	3,166.6	2,951.7	8.6	20.9	-60.38	582.6	-488.0	701.4	673.3	28.11	24.955	
3,400.0	3,379.8	3,267.7	3,041.7	8.8	21.8	-59.56	613.1	-522.3	746.1	716.8	29.25	25.506	
3,500.0	3,479.8	3,406.9	3,168.5	9.0	22.9	-58.89	649.3	-567.0	787.2	756.6	30.61	25.717	
3,600.0	3,579.8	3,484.0	3,239.7	9.1	23.5	-58.67	667.0	-590.7	825.5	794.1	31.43	26.262	
3,700.0	3,679.8	3,568.2	3,316.5	9.3	24.2	-58.37	688.3	-617.7	866.1	833.8	32.33	26.785	
3,800.0	3,779.8	3,692.5	3,430.8	9.5	25.1	-57.94	719.1	-655.9	905.4	871.9	33.53	27.003	
3,900.0	3,879.8	3,815.1	3,545.3	9.7	26.0	-57.70	745.4	-690.7	940.8	906.2	34.60	27.187	
4,000.0	3,979.8	3,893.0	3,618.5	9.9	26.5	-57.62	760.7	-712.5	975.1	939.8	35.34	27.590	

Company:	Synergy Resources	Local Co-ordinate Reference:	Well SRC Kelly Farms A-4-3CHZ
Project:	SEC.4-T5N-R66W	TVD Reference:	WELL @ 4765.5ft (Ensign Rig #131 - RKB - 13.5')
Reference Site:	SRC Kelly Farms Pad Sec.4-T5N-R66W	MD Reference:	WELL @ 4765.5ft (Ensign Rig #131 - RKB - 13.5')
Site Error:	0.0ft	North Reference:	True
Reference Well:	SRC Kelly Farms A-4-3CHZ	Survey Calculation Method:	Minimum Curvature
Well Error:	0.0ft	Output errors are at	2.00 sigma
Reference Wellbore	Wellbore #1	Database:	Landmark
Reference Design:	Plan #2 (4-21-14)	Offset TVD Reference:	Offset Datum

Offset Design Northridge Pad Sec.4-T5N-R66W - Northridge 12-4D (Exist.) - Wellbore #1 - Wellbore #1													Offset Site Error: 0.0 ft	
Survey Program: 182-MWD													Offset Well Error: 0.0 ft	
Reference		Offset		Semi Major Axis		Distance								Warning
Measured Depth (ft)	Vertical Depth (ft)	Measured Depth (ft)	Vertical Depth (ft)	Reference (ft)	Offset (ft)	Highside Toolface (°)	Offset Wellbore Centre +N/-S (ft)	+E/-W (ft)	Between Centres (ft)	Between Ellipses (ft)	Minimum Separation (ft)	Separation Factor		
0.0	0.0	0.0	0.0	0.0	0.0	99.91	-53.2	304.3	309.1					
100.0	100.0	88.1	88.1	0.1	0.1	99.91	-53.1	304.3	309.0	308.7	0.21	1,460.794		
200.0	200.0	187.8	187.8	0.3	0.2	99.87	-53.0	304.6	309.1	308.6	0.55	558.580		
300.0	300.0	290.2	290.2	0.6	0.4	99.99	-53.6	304.4	309.1	308.1	0.99	313.301		
400.0	400.0	401.0	401.0	0.8	0.7	99.87	-52.6	302.3	307.1	305.7	1.44	212.816		
500.0	500.0	521.6	521.2	1.0	0.9	99.41	-48.7	294.1	299.9	298.0	1.95	153.758		
600.0	600.0	630.4	629.0	1.2	1.2	98.79	-43.4	280.6	286.9	284.4	2.45	117.194		
700.0	700.0	735.8	733.1	1.5	1.6	97.89	-36.8	265.4	271.6	268.6	2.94	92.340		
800.0	800.0	836.6	832.4	1.7	1.9	97.01	-30.6	249.1	254.8	251.3	3.42	74.412		
900.0	900.0	939.5	933.6	1.9	2.3	85.34	-25.2	231.1	236.6	232.8	3.87	61.220		
1,000.0	999.8	1,039.9	1,031.9	2.1	2.7	86.00	-18.5	212.0	216.5	212.2	4.34	49.874		
1,100.0	1,099.5	1,137.1	1,127.1	2.4	3.1	88.04	-13.0	193.0	195.8	191.1	4.80	40.827		
1,200.0	1,198.7	1,238.7	1,226.4	2.6	3.6	92.48	-9.1	172.0	174.7	169.4	5.28	33.114		
1,300.0	1,297.5	1,339.0	1,323.7	2.9	4.1	99.62	-6.0	147.9	152.1	146.2	5.82	26.107		
1,400.0	1,396.3	1,432.0	1,413.7	3.2	4.5	108.99	-4.6	124.5	131.8	125.4	6.46	20.422		
1,500.0	1,495.0	1,522.7	1,501.8	3.5	4.9	120.81	-5.2	103.4	119.4	112.2	7.23	16.516		
1,600.0	1,593.8	1,623.9	1,600.0	3.8	5.4	136.13	-5.5	79.0	113.4	105.1	8.26	13.727		
1,643.0	1,636.3	1,664.2	1,638.9	4.0	5.6	142.87	-5.2	68.2	112.4	103.7	8.73	12.881	CC, ES	
1,700.0	1,692.5	1,717.3	1,690.0	4.1	5.9	151.98	-5.2	53.6	114.2	104.9	9.33	12.235		
1,800.0	1,791.3	1,812.4	1,780.9	4.5	6.4	167.66	-5.0	25.9	124.5	114.2	10.33	12.062	SF	
1,900.0	1,890.0	1,905.4	1,869.2	4.8	7.0	-179.11	-4.3	-3.1	142.9	131.8	11.14	12.827		
2,000.0	1,988.8	1,994.0	1,953.2	5.1	7.5	-169.49	-5.5	-31.4	169.7	157.9	11.81	14.372		
2,100.0	2,087.5	2,082.6	2,037.1	5.5	8.1	-162.62	-8.7	-59.8	202.1	189.7	12.40	16.294		
2,200.0	2,186.3	2,173.5	2,122.5	5.8	8.7	-156.92	-11.0	-90.8	237.0	224.0	13.01	18.220		
2,300.0	2,285.0	2,265.7	2,208.4	6.2	9.4	-151.99	-11.7	-124.3	273.7	260.1	13.60	20.128		
2,400.0	2,383.8	2,371.5	2,307.4	6.5	10.1	-147.58	-10.0	-161.5	309.4	295.2	14.22	21.766		
2,500.0	2,482.5	2,468.5	2,398.9	6.9	10.7	-144.35	-5.9	-193.6	343.1	328.3	14.81	23.158		
2,600.0	2,581.3	2,557.0	2,482.1	7.2	11.2	-142.04	-2.5	-223.4	377.9	362.4	15.43	24.482		
2,700.0	2,680.4	2,646.6	2,566.0	7.5	11.9	-140.08	1.0	-254.6	412.2	396.1	16.06	25.667		
2,800.0	2,780.0	2,720.2	2,634.4	7.7	12.4	-138.50	3.6	-281.7	446.5	429.9	16.60	26.890		
2,900.0	2,879.8	2,795.0	2,702.7	7.9	13.1	-136.82	5.5	-312.2	482.9	465.8	17.13	28.192		
3,000.0	2,979.8	2,882.5	2,781.6	8.1	13.8	-134.74	7.3	-350.1	520.3	502.7	17.64	29.489		
3,100.0	3,079.8	2,984.7	2,874.4	8.3	14.7	-120.42	9.4	-392.5	555.6	535.3	20.30	27.372		
3,200.0	3,179.8	3,070.5	2,952.3	8.4	15.4	-118.16	13.4	-428.4	590.9	569.6	21.29	27.759		
3,300.0	3,279.8	3,162.7	3,035.2	8.6	16.2	-115.93	17.8	-468.5	628.5	606.2	22.36	28.115		
3,400.0	3,379.8	3,275.3	3,138.4	8.8	17.1	-113.80	21.6	-513.5	664.0	640.5	23.53	28.224		
3,500.0	3,479.8	3,368.8	3,224.6	9.0	17.8	-112.27	24.9	-549.4	698.6	674.1	24.50	28.518		
3,600.0	3,579.8	3,495.7	3,343.4	9.1	18.7	-111.03	22.9	-594.0	732.3	706.6	25.63	28.572		
3,700.0	3,679.8	3,663.6	3,505.0	9.3	19.6	-109.50	26.9	-638.6	755.2	728.5	26.78	28.199		
3,800.0	3,779.8	3,753.9	3,592.6	9.5	20.0	-108.73	29.8	-660.5	777.2	749.7	27.47	28.295		
3,900.0	3,879.8	3,825.4	3,661.6	9.7	20.4	-108.09	32.7	-679.3	801.2	773.1	28.10	28.510		
4,000.0	3,979.8	3,893.8	3,726.8	9.9	20.8	-107.46	35.1	-699.8	828.8	800.0	28.76	28.821		
4,100.0	4,079.8	3,962.0	3,791.2	10.1	21.3	-106.86	37.1	-721.9	859.2	829.8	29.44	29.181		
4,200.0	4,179.8	4,039.3	3,863.7	10.3	21.9	-106.23	38.7	-748.6	892.1	861.9	30.24	29.498		
4,300.0	4,279.8	4,116.1	3,935.1	10.5	22.4	-105.63	39.9	-776.9	927.3	896.2	31.07	29.842		
4,400.0	4,379.8	4,221.0	4,032.4	10.7	23.2	-104.84	41.7	-816.1	963.2	931.1	32.11	29.994		
4,500.0	4,479.8	4,337.0	4,141.3	10.9	24.0	-104.16	42.7	-856.1	996.4	963.2	33.15	30.060		

Company:	Synergy Resources	Local Co-ordinate Reference:	Well SRC Kelly Farms A-4-3CHZ
Project:	SEC.4-T5N-R66W	TVD Reference:	WELL @ 4765.5ft (Ensign Rig #131 - RKB - 13.5')
Reference Site:	SRC Kelly Farms Pad Sec.4-T5N-R66W	MD Reference:	WELL @ 4765.5ft (Ensign Rig #131 - RKB - 13.5')
Site Error:	0.0ft	North Reference:	True
Reference Well:	SRC Kelly Farms A-4-3CHZ	Survey Calculation Method:	Minimum Curvature
Well Error:	0.0ft	Output errors are at	2.00 sigma
Reference Wellbore	Wellbore #1	Database:	Landmark
Reference Design:	Plan #2 (4-21-14)	Offset TVD Reference:	Offset Datum

Offset Design Northridge Pad Sec.4-T5N-R66W - Northridge 21-4D (Exist.) - Wellbore #1 - Wellbore #1													Offset Site Error:	0.0ft
Survey Program: 150-MWD													Offset Well Error:	0.0ft
Reference		Offset		Semi Major Axis			Distance							Warning
Measured Depth (ft)	Vertical Depth (ft)	Measured Depth (ft)	Vertical Depth (ft)	Reference (ft)	Offset (ft)	Highside Toolface (°)	Offset Wellbore Centre +N/-S (ft)	+E/-W (ft)	Between Centres (ft)	Between Ellipses (ft)	Minimum Separation (ft)	Separation Factor		
0.0	0.0	0.0	0.0	0.0	0.0	93.88	-21.9	322.1	323.1					
100.0	100.0	86.5	86.5	0.1	0.1	93.83	-21.6	322.3	323.0	322.8	0.21	1,539.290		
200.0	200.0	187.7	187.7	0.3	0.3	93.63	-20.5	322.7	323.4	322.8	0.59	548.017		
300.0	300.0	294.8	294.7	0.6	0.5	92.88	-16.2	321.8	322.3	321.3	1.06	303.992		
400.0	400.0	401.4	400.9	0.8	0.8	91.49	-8.3	318.6	319.0	317.4	1.55	205.513		
500.0	500.0	505.1	504.0	1.0	1.1	89.67	1.8	313.8	314.2	312.1	2.07	152.132		
600.0	600.0	606.7	604.6	1.2	1.4	87.24	14.8	307.9	308.7	306.1	2.61	118.188		
700.0	700.0	705.4	701.9	1.5	1.7	84.34	29.9	301.7	303.5	300.4	3.19	95.299		
800.0	800.0	804.6	799.8	1.7	2.1	81.27	45.4	295.5	299.2	295.5	3.77	79.289		
900.0	900.0	905.5	898.7	1.9	2.5	66.26	63.6	288.1	294.5	290.2	4.39	67.097		
1,000.0	999.8	1,005.0	995.5	2.1	3.0	62.73	85.1	279.4	288.9	283.8	5.08	56.849		
1,100.0	1,099.5	1,106.8	1,093.5	2.4	3.5	58.85	110.5	268.8	282.3	276.4	5.85	48.275		
1,200.0	1,198.7	1,205.0	1,187.1	2.6	4.1	54.84	137.6	256.3	273.8	267.2	6.65	41.159		
1,300.0	1,297.5	1,299.1	1,275.7	2.9	4.7	50.59	166.4	243.9	266.0	258.6	7.48	35.559		
1,400.0	1,396.3	1,396.2	1,366.9	3.2	5.2	45.79	197.3	231.5	260.7	252.4	8.30	31.424		
1,500.0	1,495.0	1,496.3	1,461.3	3.5	5.8	40.83	228.3	218.5	256.6	247.6	9.05	28.345		
1,600.0	1,593.8	1,595.9	1,555.4	3.8	6.4	35.86	258.1	205.0	253.4	243.7	9.76	25.975		
1,700.0	1,692.5	1,693.9	1,648.2	4.1	6.9	31.06	286.5	191.9	251.6	241.3	10.39	24.216		
1,768.2	1,759.8	1,761.4	1,712.3	4.4	7.3	27.82	305.8	183.1	251.4	240.6	10.79	23.289 CC		
1,800.0	1,791.3	1,793.1	1,742.4	4.5	7.5	26.34	314.6	179.0	251.4	240.4	10.97	22.911 ES		
1,900.0	1,890.0	1,891.8	1,836.5	4.8	8.0	21.90	341.6	166.9	252.4	240.9	11.50	21.945		
2,000.0	1,988.8	1,990.8	1,931.3	5.1	8.6	17.71	368.1	155.2	254.6	242.6	11.98	21.245		
2,100.0	2,087.5	2,090.9	2,027.2	5.5	9.1	13.65	394.1	143.6	257.5	245.1	12.43	20.716		
2,200.0	2,186.3	2,187.6	2,119.7	5.8	9.7	9.61	419.6	131.4	261.8	249.0	12.84	20.393		
2,300.0	2,285.0	2,288.4	2,216.2	6.2	10.2	5.58	445.8	118.8	267.0	253.8	13.22	20.199		
2,400.0	2,383.8	2,385.8	2,309.7	6.5	10.7	2.10	470.5	107.6	273.1	259.5	13.58	20.109		
2,500.0	2,482.5	2,480.2	2,400.3	6.9	11.3	-1.11	495.4	97.0	281.2	267.2	13.94	20.169		
2,600.0	2,581.3	2,575.4	2,490.9	7.2	11.8	-4.33	521.8	85.7	291.8	277.5	14.30	20.409		
2,700.0	2,680.4	2,671.3	2,582.2	7.5	12.4	-7.47	548.7	73.5	306.2	291.6	14.61	20.962		
2,800.0	2,780.0	2,759.8	2,665.8	7.7	12.9	-10.20	575.3	61.7	326.9	312.0	14.90	21.940		
2,900.0	2,879.8	2,855.9	2,756.1	7.9	13.6	-12.80	605.6	48.5	353.1	337.9	15.20	23.225		
3,000.0	2,979.8	2,960.1	2,854.7	8.1	14.2	-15.03	636.2	35.1	380.9	365.4	15.51	24.557		
3,100.0	3,079.8	3,051.1	2,941.1	8.3	14.8	-4.90	662.5	23.1	410.8	388.4	22.35	18.383 SF		
3,200.0	3,179.8	3,145.6	3,030.2	8.4	15.3	-6.27	691.0	10.6	442.3	419.1	23.15	19.107		
3,300.0	3,279.8	3,254.6	3,134.0	8.6	16.0	-7.63	721.3	-3.5	471.6	447.6	24.00	19.649		
3,400.0	3,379.8	3,351.7	3,227.0	8.8	16.5	-8.56	747.0	-14.9	499.5	474.7	24.75	20.185		
3,500.0	3,479.8	3,457.0	3,327.7	9.0	17.1	-9.48	774.6	-27.3	527.3	501.8	25.53	20.657		
3,600.0	3,579.8	3,561.7	3,428.8	9.1	17.6	-10.28	799.6	-39.0	552.8	526.5	26.27	21.042		
3,700.0	3,679.8	3,662.4	3,526.1	9.3	18.1	-11.01	822.7	-50.5	577.5	550.6	26.98	21.409		
3,800.0	3,779.8	3,755.7	3,616.3	9.5	18.6	-11.59	844.1	-60.7	602.2	574.6	27.64	21.788		
3,900.0	3,879.8	3,829.2	3,687.0	9.7	19.0	-12.01	862.4	-68.8	628.9	600.7	28.24	22.271		
4,000.0	3,979.8	3,904.6	3,758.8	9.9	19.5	-12.47	883.7	-78.5	659.3	630.4	28.89	22.821		
4,100.0	4,079.8	3,985.0	3,834.5	10.1	20.0	-12.98	908.0	-89.9	691.9	662.3	29.61	23.371		
4,200.0	4,179.8	4,069.8	3,914.0	10.3	20.5	-13.47	935.1	-102.1	726.4	696.0	30.38	23.914		
4,300.0	4,279.8	4,182.3	4,019.5	10.5	21.3	-13.98	971.0	-117.2	760.8	729.5	31.31	24.301		
4,400.0	4,379.8	4,297.2	4,128.8	10.7	21.9	-14.35	1,003.9	-130.5	791.3	759.1	32.19	24.578		
4,500.0	4,479.8	4,381.4	4,208.9	10.9	22.4	-14.57	1,028.1	-139.8	821.9	789.0	32.90	24.982		
4,600.0	4,579.8	4,468.1	4,290.9	11.1	23.0	-14.79	1,054.3	-149.8	854.0	820.4	33.64	25.390		
4,700.0	4,679.8	4,560.0	4,377.8	11.3	23.5	-15.05	1,082.1	-161.1	886.4	852.0	34.42	25.756		
4,800.0	4,779.8	4,640.1	4,453.2	11.5	24.1	-15.30	1,106.7	-171.6	919.6	884.5	35.14	26.170		
4,900.0	4,879.8	4,712.7	4,521.1	11.7	24.5	-15.48	1,130.8	-181.1	955.0	919.2	35.83	26.652		

CC - Min centre to center distance or convergent point, SF - min separation factor, ES - min ellipse separation

Company:	Synergy Resources	Local Co-ordinate Reference:	Well SRC Kelly Farms A-4-3CHZ
Project:	SEC.4-T5N-R66W	TVD Reference:	WELL @ 4765.5ft (Ensign Rig #131 - RKB - 13.5')
Reference Site:	SRC Kelly Farms Pad Sec.4-T5N-R66W	MD Reference:	WELL @ 4765.5ft (Ensign Rig #131 - RKB - 13.5')
Site Error:	0.0ft	North Reference:	True
Reference Well:	SRC Kelly Farms A-4-3CHZ	Survey Calculation Method:	Minimum Curvature
Well Error:	0.0ft	Output errors are at	2.00 sigma
Reference Wellbore	Wellbore #1	Database:	Landmark
Reference Design:	Plan #2 (4-21-14)	Offset TVD Reference:	Offset Datum

Offset Design Northridge Pad Sec.4-T5N-R66W - Northridge 21-4D (Exist.) - Wellbore #1 - Wellbore #1													Offset Site Error:	0.0 ft
Survey Program: 150-MWD													Offset Well Error:	0.0 ft
Reference	Offset	Semi Major Axis		Distance									Warning	
Measured Depth (ft)	Vertical Depth (ft)	Measured Depth (ft)	Vertical Depth (ft)	Reference (ft)	Offset (ft)	Highside Toolface (°)	Offset Wellbore Centre +N/-S (ft)	Offset Wellbore Centre +E/-W (ft)	Between Centres (ft)	Between Ellipses (ft)	Minimum Separation (ft)	Separation Factor		
5,000.0	4,979.8	4,835.6	4,636.3	11.9	25.4	-15.89	1,169.7	-198.8	989.3	952.5	36.85	26.845		

Company:	Synergy Resources	Local Co-ordinate Reference:	Well SRC Kelly Farms A-4-3CHZ
Project:	SEC.4-T5N-R66W	TVD Reference:	WELL @ 4765.5ft (Ensign Rig #131 - RKB - 13.5')
Reference Site:	SRC Kelly Farms Pad Sec.4-T5N-R66W	MD Reference:	WELL @ 4765.5ft (Ensign Rig #131 - RKB - 13.5')
Site Error:	0.0ft	North Reference:	True
Reference Well:	SRC Kelly Farms A-4-3CHZ	Survey Calculation Method:	Minimum Curvature
Well Error:	0.0ft	Output errors are at	2.00 sigma
Reference Wellbore	Wellbore #1	Database:	Landmark
Reference Design:	Plan #2 (4-21-14)	Offset TVD Reference:	Offset Datum

Offset Design Northridge Pad Sec.4-T5N-R66W - Northridge 22-4D (Exist.) - Wellbore #1 - Wellbore #1												Offset Site Error: 0.0 ft	
Survey Program: 182-MWD												Offset Well Error: 0.0 ft	
Reference		Offset		Semi Major Axis		Distance							
Measured Depth (ft)	Vertical Depth (ft)	Measured Depth (ft)	Vertical Depth (ft)	Reference (ft)	Offset (ft)	Highside Toolface (°)	Offset Wellbore Centre +N/-S (ft)	+E/-W (ft)	Between Centres (ft)	Between Ellipses (ft)	Minimum Separation (ft)	Separation Factor	Warning
0.0	0.0	0.0	0.0	0.0	0.0	102.06	-63.8	298.4	305.4				
100.0	100.0	85.9	85.9	0.1	0.1	102.18	-64.5	298.7	305.6	305.3	0.21	1,426.019	ES
200.0	200.0	182.9	182.8	0.3	0.2	102.60	-67.0	299.5	306.9	306.4	0.55	553.337	
300.0	300.0	283.7	283.6	0.6	0.4	103.17	-70.3	300.5	308.6	307.6	0.99	311.628	
400.0	400.0	384.3	384.1	0.8	0.6	103.65	-73.2	301.4	310.1	308.7	1.42	217.785	
500.0	500.0	485.0	484.8	1.0	0.9	104.04	-75.6	302.1	311.5	309.6	1.87	166.715	
600.0	600.0	585.7	585.5	1.2	1.1	104.37	-77.6	302.6	312.4	310.1	2.31	135.087	
700.0	700.0	686.0	685.7	1.5	1.3	104.66	-79.3	303.3	313.5	310.7	2.75	113.934	
800.0	800.0	788.0	787.8	1.7	1.5	104.90	-80.7	303.5	314.0	310.8	3.19	98.332	
900.0	900.0	889.6	889.4	1.9	1.7	93.42	-80.2	303.6	314.1	310.5	3.63	86.533	
1,000.0	999.8	992.1	991.8	2.1	1.9	94.03	-78.0	303.5	313.8	309.7	4.07	77.166	
1,100.0	1,099.5	1,093.2	1,093.0	2.4	2.1	95.41	-76.4	302.5	313.1	308.6	4.50	69.534	
1,200.0	1,198.7	1,193.3	1,193.0	2.6	2.3	97.47	-74.9	301.1	312.7	307.7	4.96	63.068	
1,207.1	1,205.8	1,200.4	1,200.1	2.6	2.4	97.63	-74.8	301.0	312.7	307.7	4.99	62.634	
1,300.0	1,297.5	1,292.7	1,292.4	2.9	2.6	100.04	-73.4	299.6	313.1	307.6	5.45	57.496	
1,400.0	1,396.3	1,392.3	1,392.0	3.2	2.8	102.70	-71.7	298.0	314.1	308.1	5.95	52.773	
1,500.0	1,495.0	1,489.9	1,489.5	3.5	3.0	105.32	-70.3	296.4	315.8	309.3	6.45	48.947	
1,600.0	1,593.8	1,588.8	1,588.4	3.8	3.2	107.96	-69.2	294.9	318.4	311.5	6.96	45.772	
1,700.0	1,692.5	1,689.1	1,688.7	4.1	3.4	110.67	-68.2	292.9	321.5	314.0	7.47	43.010	
1,800.0	1,791.3	1,787.6	1,787.2	4.5	3.6	113.42	-67.8	290.3	325.1	317.1	7.99	40.705	
1,900.0	1,890.0	1,886.3	1,885.8	4.8	3.8	116.14	-67.7	287.8	329.6	321.1	8.49	38.804	
2,000.0	1,988.8	1,987.9	1,987.4	5.1	4.0	118.94	-67.5	284.5	334.4	325.3	9.01	37.119	
2,100.0	2,087.5	2,088.5	2,087.8	5.5	4.2	121.74	-67.3	280.1	338.9	329.4	9.52	35.615	
2,200.0	2,186.3	2,188.0	2,187.3	5.8	4.5	124.54	-67.4	275.2	344.3	334.2	10.01	34.379	
2,300.0	2,285.0	2,291.4	2,290.4	6.2	4.7	127.61	-67.8	268.3	349.4	338.9	10.51	33.232	
2,400.0	2,383.8	2,395.6	2,394.2	6.5	4.9	130.87	-68.0	259.0	353.9	342.9	11.01	32.134	
2,500.0	2,482.5	2,494.6	2,492.4	6.9	5.2	134.40	-69.1	246.8	358.3	346.8	11.49	31.170	
2,600.0	2,581.3	2,602.4	2,599.0	7.2	5.5	138.54	-70.8	230.7	363.0	351.0	11.99	30.287	
2,700.0	2,680.4	2,704.6	2,699.4	7.5	5.8	142.61	-71.4	211.3	364.6	352.1	12.43	29.331	
2,800.0	2,780.0	2,800.3	2,792.8	7.7	6.1	146.41	-72.7	191.0	364.7	351.8	12.87	28.342	
2,900.0	2,879.8	2,894.8	2,884.7	7.9	6.4	150.22	-75.1	169.1	364.1	350.7	13.31	27.345	
3,000.0	2,979.8	2,993.1	2,979.5	8.1	6.9	154.44	-78.7	143.3	362.4	348.6	13.80	26.265	
3,100.0	3,079.8	3,087.6	3,070.6	8.3	7.2	170.15	-82.3	118.2	360.6	346.1	14.54	24.806	
3,143.5	3,123.3	3,130.3	3,111.8	8.3	7.4	171.89	-83.9	107.4	360.5	345.7	14.73	24.470	
3,200.0	3,179.8	3,186.5	3,166.2	8.4	7.6	174.15	-85.8	93.2	360.7	345.7	14.98	24.071	
3,300.0	3,279.8	3,291.4	3,267.2	8.6	8.0	178.66	-87.7	65.0	360.8	345.4	15.47	23.326	
3,400.0	3,379.8	3,386.6	3,359.2	8.8	8.4	-177.48	-88.6	40.6	362.1	346.2	15.92	22.743	
3,500.0	3,479.8	3,477.8	3,447.7	9.0	8.8	-174.07	-90.7	18.7	366.3	349.9	16.36	22.383	
3,600.0	3,579.8	3,572.8	3,539.7	9.1	9.2	-170.51	-93.8	-4.8	373.0	356.1	16.85	22.134	
3,700.0	3,679.8	3,669.1	3,632.5	9.3	9.7	-166.74	-96.6	-30.6	381.4	364.0	17.38	21.943	
3,800.0	3,779.8	3,761.7	3,721.3	9.5	10.2	-163.16	-99.5	-56.3	392.1	374.1	17.93	21.872	
3,900.0	3,879.8	3,853.7	3,809.5	9.7	10.7	-159.72	-103.2	-82.5	405.4	386.9	18.50	21.911	
4,000.0	3,979.8	3,948.7	3,900.0	9.9	11.2	-156.23	-107.0	-110.9	420.8	401.7	19.13	21.994	
4,100.0	4,079.8	4,046.7	3,993.5	10.1	11.7	-152.83	-110.5	-140.4	437.6	417.8	19.79	22.110	
4,200.0	4,179.8	4,150.5	4,093.3	10.3	12.2	-149.88	-114.7	-168.4	454.5	434.0	20.45	22.219	
4,300.0	4,279.8	4,256.1	4,195.7	10.5	12.6	-147.44	-118.7	-193.6	470.4	449.3	21.11	22.286	
4,400.0	4,379.8	4,363.3	4,300.4	10.7	13.1	-145.41	-122.5	-216.2	485.2	463.4	21.74	22.313	
4,500.0	4,479.8	4,469.6	4,404.9	10.9	13.5	-143.75	-125.7	-235.8	498.4	476.1	22.36	22.296	
4,600.0	4,579.8	4,580.1	4,513.9	11.1	13.9	-142.30	-128.4	-253.7	510.2	487.3	22.96	22.226	
4,700.0	4,679.8	4,697.7	4,630.6	11.3	14.2	-141.20	-130.6	-267.9	519.1	495.6	23.52	22.072	
4,800.0	4,779.8	4,815.1	4,747.6	11.5	14.5	-140.38	-131.0	-278.0	524.9	500.9	24.03	21.845	

CC - Min centre to center distance or convergent point, SF - min separation factor, ES - min ellipse separation

Company:	Synergy Resources	Local Co-ordinate Reference:	Well SRC Kelly Farms A-4-3CHZ
Project:	SEC.4-T5N-R66W	TVD Reference:	WELL @ 4765.5ft (Ensign Rig #131 - RKB - 13.5')
Reference Site:	SRC Kelly Farms Pad Sec.4-T5N-R66W	MD Reference:	WELL @ 4765.5ft (Ensign Rig #131 - RKB - 13.5')
Site Error:	0.0ft	North Reference:	True
Reference Well:	SRC Kelly Farms A-4-3CHZ	Survey Calculation Method:	Minimum Curvature
Well Error:	0.0ft	Output errors are at	2.00 sigma
Reference Wellbore	Wellbore #1	Database:	Landmark
Reference Design:	Plan #2 (4-21-14)	Offset TVD Reference:	Offset Datum

Offset Design Northridge Pad Sec.4-T5N-R66W - Northridge 22-4D (Exist.) - Wellbore #1 - Wellbore #1													Offset Site Error:	0.0 ft
Survey Program: 182-MWD													Offset Well Error:	0.0 ft
Reference	Offset	Semi Major Axis		Distance		Warning								
Measured Depth (ft)	Vertical Depth (ft)	Measured Depth (ft)	Vertical Depth (ft)	Reference (ft)	Offset (ft)	Highside Toolface (°)	Offset Wellbore Centre +N/-S (ft)	+E/-W (ft)	Between Centres (ft)	Between Ellipses (ft)	Minimum Separation (ft)	Separation Factor		
4,900.0	4,879.8	4,928.1	4,860.4	11.7	14.7	-139.78	-129.6	-283.9	527.3	502.8	24.48	21.536		
5,000.0	4,979.8	5,030.8	4,963.0	11.9	14.9	-139.46	-128.6	-286.9	528.4	503.5	24.88	21.235		
5,100.0	5,079.8	5,130.6	5,062.8	12.1	15.1	-139.28	-128.2	-288.9	529.4	504.1	25.27	20.948		
5,200.0	5,179.8	5,231.7	5,163.9	12.3	15.2	-139.13	-128.1	-290.5	530.4	504.7	25.66	20.669		
5,300.0	5,279.8	5,331.1	5,263.3	12.5	15.4	-139.02	-128.0	-291.8	531.2	505.2	26.04	20.397		
5,400.0	5,379.8	5,430.7	5,362.9	12.7	15.5	-138.96	-128.4	-292.9	532.2	505.8	26.43	20.138		
5,500.0	5,479.8	5,530.3	5,462.5	12.9	15.7	-138.97	-129.2	-293.5	533.2	506.4	26.81	19.889		
5,600.0	5,579.8	5,629.9	5,562.1	13.1	15.9	-139.03	-130.5	-293.8	534.4	507.2	27.19	19.653		
5,700.0	5,679.8	5,730.9	5,663.1	13.3	16.0	-139.11	-131.8	-294.0	535.4	507.9	27.57	19.418		
5,800.0	5,779.8	5,831.1	5,763.2	13.5	16.2	-139.20	-133.0	-294.0	536.4	508.4	27.96	19.187		
5,900.0	5,879.8	5,931.1	5,863.3	13.7	16.3	-139.28	-134.2	-294.0	537.3	509.0	28.34	18.960		
6,000.0	5,979.8	6,030.7	5,962.8	13.9	16.5	-139.33	-135.3	-294.3	538.3	509.5	28.73	18.738		
6,100.0	6,079.8	6,129.8	6,062.0	14.1	16.6	-139.40	-136.5	-294.5	539.4	510.3	29.11	18.527		
6,200.0	6,179.8	6,230.1	6,162.2	14.3	16.8	-139.49	-137.9	-294.6	540.5	511.0	29.50	18.321		
6,300.0	6,279.8	6,328.4	6,260.5	14.5	17.0	-139.58	-139.4	-294.7	541.8	511.9	29.89	18.125		
6,400.0	6,379.8	6,427.3	6,359.4	14.8	17.1	-139.70	-141.4	-294.9	543.4	513.1	30.28	17.943		
6,500.0	6,479.8	6,525.7	6,457.7	15.0	17.3	-139.87	-143.7	-294.8	545.1	514.4	30.67	17.770 SF		
6,600.0	6,579.7	6,621.8	6,553.9	15.2	17.5	129.98	-145.9	-295.5	549.6	519.3	30.27	18.155		
6,700.0	6,678.2	6,718.4	6,650.4	15.4	17.6	130.38	-148.1	-297.0	563.3	532.9	30.38	18.541		
6,800.0	6,773.4	6,812.6	6,744.6	15.6	17.8	131.12	-150.3	-298.7	586.6	556.3	30.29	19.364		
6,900.0	6,863.4	6,901.0	6,832.9	15.9	18.0	131.85	-152.4	-300.3	619.9	589.9	30.06	20.621		
7,000.0	6,946.6	6,980.8	6,912.7	16.3	18.1	132.15	-154.5	-301.9	663.9	634.1	29.81	22.268		
7,100.0	7,021.2	7,052.5	6,984.3	16.9	18.3	131.73	-156.5	-303.5	718.5	688.7	29.75	24.149		
7,200.0	7,085.9	7,114.2	7,046.0	17.7	18.4	130.09	-158.3	-304.9	783.1	752.9	30.19	25.935		
7,300.0	7,139.3	7,164.2	7,096.0	18.8	18.5	126.62	-159.9	-306.1	856.7	825.1	31.55	27.149		
7,400.0	7,180.4	7,201.9	7,133.6	20.2	18.6	120.42	-161.0	-307.1	937.8	903.6	34.21	27.412		

Company:	Synergy Resources	Local Co-ordinate Reference:	Well SRC Kelly Farms A-4-3CHZ
Project:	SEC.4-T5N-R66W	TVD Reference:	WELL @ 4765.5ft (Ensign Rig #131 - RKB - 13.5')
Reference Site:	SRC Kelly Farms Pad Sec.4-T5N-R66W	MD Reference:	WELL @ 4765.5ft (Ensign Rig #131 - RKB - 13.5')
Site Error:	0.0ft	North Reference:	True
Reference Well:	SRC Kelly Farms A-4-3CHZ	Survey Calculation Method:	Minimum Curvature
Well Error:	0.0ft	Output errors are at	2.00 sigma
Reference Wellbore	Wellbore #1	Database:	Landmark
Reference Design:	Plan #2 (4-21-14)	Offset TVD Reference:	Offset Datum

Offset Design Northridge Pad Sec.4-T5N-R66W - Northridge 4AD (Exist.) - Wellbore #1 - Wellbore #1													Offset Site Error:	0.0ft
Survey Program: 182-MWD													Offset Well Error:	0.0ft
Reference		Offset		Semi Major Axis			Distance							Warning
Measured Depth (ft)	Vertical Depth (ft)	Measured Depth (ft)	Vertical Depth (ft)	Reference (ft)	Offset (ft)	Highside Toolface (°)	Offset Wellbore Centre +N/-S (ft)	+E/-W (ft)	Between Centres (ft)	Between Ellipses (ft)	Minimum Separation (ft)	Separation Factor		
0.0	0.0	0.0	0.0	0.0	0.0	97.82	-42.6	310.4	313.6					
100.0	100.0	89.1	89.1	0.1	0.1	97.81	-42.6	310.2	313.1	312.9	0.21	1,471.826		
200.0	200.0	190.2	190.2	0.3	0.2	97.79	-42.3	309.4	312.3	311.8	0.56	559.077		
248.1	248.1	235.6	235.6	0.4	0.3	97.77	-42.2	309.2	312.1	311.3	0.76	411.509		
300.0	300.0	285.6	285.6	0.6	0.4	97.73	-42.0	309.5	312.3	311.4	0.98	319.762		
400.0	400.0	390.2	390.2	0.8	0.6	97.79	-42.3	309.3	312.2	310.8	1.42	220.039		
500.0	500.0	492.5	492.5	1.0	0.9	97.80	-42.2	307.8	310.7	308.8	1.86	166.662		
600.0	600.0	591.2	591.2	1.2	1.1	97.63	-41.1	306.7	309.5	307.2	2.29	134.857		
700.0	700.0	692.1	692.0	1.5	1.3	97.78	-41.7	305.2	308.1	305.4	2.73	112.855		
800.0	800.0	795.0	794.9	1.7	1.5	97.97	-42.5	303.2	306.3	303.1	3.18	96.427		
900.0	900.0	894.5	894.4	1.9	1.7	86.68	-42.3	300.8	303.7	300.1	3.61	84.124		
1,000.0	999.8	1,005.0	1,004.8	2.1	2.0	87.72	-40.8	296.7	299.6	295.6	4.07	73.580		
1,100.0	1,099.5	1,118.1	1,117.5	2.4	2.2	89.58	-38.0	287.2	290.6	286.0	4.56	63.688		
1,200.0	1,198.7	1,219.7	1,218.4	2.6	2.5	91.64	-32.5	277.1	279.8	274.8	5.04	55.531		
1,300.0	1,297.5	1,327.9	1,325.6	2.9	2.8	94.50	-25.5	264.4	267.6	262.0	5.56	48.117		
1,400.0	1,396.3	1,435.6	1,431.5	3.2	3.1	97.36	-16.1	247.7	251.6	245.5	6.11	41.171		
1,500.0	1,495.0	1,536.1	1,530.0	3.5	3.5	100.11	-5.4	230.2	233.8	227.2	6.65	35.160		
1,600.0	1,593.8	1,638.6	1,630.1	3.8	3.9	104.08	3.6	210.3	215.5	208.3	7.20	29.932		
1,700.0	1,692.5	1,740.3	1,728.8	4.1	4.3	108.65	14.1	188.4	195.8	188.0	7.77	25.197		
1,800.0	1,791.3	1,836.7	1,822.2	4.5	4.7	114.05	24.2	166.5	176.3	167.9	8.33	21.155		
1,900.0	1,890.0	1,933.3	1,915.8	4.8	5.2	120.73	34.2	144.6	158.8	149.9	8.91	17.828		
2,000.0	1,988.8	2,033.4	2,012.4	5.1	5.6	129.04	45.9	121.2	142.7	133.1	9.55	14.938		
2,100.0	2,087.5	2,132.2	2,107.3	5.5	6.2	139.25	58.8	96.7	128.0	117.7	10.29	12.438		
2,200.0	2,186.3	2,231.0	2,201.4	5.8	6.7	151.68	74.1	71.1	115.7	104.6	11.15	10.382		
2,300.0	2,285.0	2,326.0	2,291.6	6.2	7.3	165.98	89.2	45.5	109.3	97.2	12.10	9.032		
2,325.1	2,309.8	2,349.8	2,314.2	6.3	7.4	169.74	92.9	39.1	109.0	96.7	12.35	8.829 CC, ES		
2,400.0	2,383.8	2,420.9	2,381.9	6.5	7.8	-179.30	103.9	20.1	111.4	98.3	13.08	8.515 SF		
2,500.0	2,482.5	2,516.8	2,473.2	6.9	8.3	-165.90	118.4	-5.4	121.3	107.2	14.04	8.639		
2,600.0	2,581.3	2,614.5	2,565.8	7.2	8.9	-154.18	135.0	-31.6	135.5	120.5	14.96	9.055		
2,700.0	2,680.4	2,708.6	2,654.9	7.5	9.5	-144.62	151.6	-57.0	151.8	136.0	15.74	9.641		
2,800.0	2,780.0	2,799.9	2,740.9	7.7	10.1	-136.34	167.2	-83.4	171.2	154.8	16.39	10.444		
2,900.0	2,879.8	2,894.8	2,830.0	7.9	10.7	-128.90	182.7	-112.0	193.2	176.2	16.93	11.406		
3,000.0	2,979.8	2,993.8	2,924.2	8.1	11.3	-122.72	197.5	-138.9	213.8	196.4	17.35	12.324		
3,100.0	3,079.8	3,087.3	3,013.1	8.3	11.9	-105.68	211.0	-164.4	235.8	218.7	17.10	13.791		
3,200.0	3,179.8	3,185.9	3,106.7	8.4	12.4	-100.59	226.7	-191.0	259.0	240.9	18.07	14.330		
3,300.0	3,279.8	3,283.3	3,199.8	8.6	13.0	-96.67	241.1	-216.0	282.5	263.6	18.98	14.887		
3,400.0	3,379.8	3,381.4	3,294.0	8.8	13.5	-93.98	252.4	-240.5	306.6	286.8	19.82	15.466		
3,500.0	3,479.8	3,479.3	3,388.4	9.0	14.0	-91.69	263.5	-264.1	330.3	309.7	20.65	15.998		
3,600.0	3,579.8	3,578.7	3,484.4	9.1	14.5	-89.87	273.8	-287.8	354.2	332.7	21.45	16.511		
3,700.0	3,679.8	3,674.7	3,577.2	9.3	15.0	-88.17	284.7	-309.9	377.5	355.2	22.24	16.976		
3,800.0	3,779.8	3,765.0	3,664.1	9.5	15.5	-86.70	295.4	-331.6	402.2	379.2	23.01	17.481		
3,900.0	3,879.8	3,850.6	3,745.9	9.7	16.0	-85.05	308.5	-353.4	429.0	405.2	23.80	18.023		
4,000.0	3,979.8	3,934.4	3,825.0	9.9	16.6	-83.34	323.6	-376.7	458.8	434.1	24.64	18.623		
4,100.0	4,079.8	4,021.6	3,906.5	10.1	17.2	-81.61	340.7	-402.3	490.8	465.3	25.53	19.227		
4,200.0	4,179.8	4,118.9	3,997.4	10.3	17.9	-79.93	359.6	-431.4	523.8	497.3	26.49	19.777		
4,300.0	4,279.8	4,233.7	4,106.0	10.5	18.6	-78.47	379.1	-463.3	554.5	527.0	27.49	20.174		
4,400.0	4,379.8	4,321.2	4,189.4	10.7	19.1	-77.71	391.3	-486.5	583.5	555.2	28.27	20.642		
4,500.0	4,479.8	4,406.5	4,269.9	10.9	19.7	-76.90	405.1	-511.3	615.5	586.4	29.06	21.178		
4,600.0	4,579.8	4,502.5	4,360.6	11.1	20.3	-75.98	421.5	-538.2	646.9	616.9	29.94	21.603		
4,700.0	4,679.8	4,580.4	4,433.6	11.3	20.8	-75.21	436.0	-560.9	680.0	649.3	30.72	22.133		
4,800.0	4,779.8	4,657.8	4,505.7	11.5	21.4	-74.63	449.5	-585.9	715.7	684.2	31.53	22.701		

CC - Min centre to center distance or convergent point, SF - min separation factor, ES - min ellipse separation

Company:	Synergy Resources	Local Co-ordinate Reference:	Well SRC Kelly Farms A-4-3CHZ
Project:	SEC.4-T5N-R66W	TVD Reference:	WELL @ 4765.5ft (Ensign Rig #131 - RKB - 13.5')
Reference Site:	SRC Kelly Farms Pad Sec.4-T5N-R66W	MD Reference:	WELL @ 4765.5ft (Ensign Rig #131 - RKB - 13.5')
Site Error:	0.0ft	North Reference:	True
Reference Well:	SRC Kelly Farms A-4-3CHZ	Survey Calculation Method:	Minimum Curvature
Well Error:	0.0ft	Output errors are at	2.00 sigma
Reference Wellbore	Wellbore #1	Database:	Landmark
Reference Design:	Plan #2 (4-21-14)	Offset TVD Reference:	Offset Datum

Offset Design Northridge Pad Sec.4-T5N-R66W - Northridge 4AD (Exist.) - Wellbore #1 - Wellbore #1												Offset Site Error:		0.0 ft
Survey Program: 182-MWD												Offset Well Error:		0.0 ft
Reference		Offset		Semi Major Axis			Distance							Warning
Measured Depth	Vertical Depth	Measured Depth	Vertical Depth	Reference	Offset	Highside Toolface	Offset Wellbore Centre		Between Centres	Between Ellipses	Minimum Separation	Separation Factor		
(ft)	(ft)	(ft)	(ft)	(ft)	(ft)	(°)	+N/-S (ft)	+E/-W (ft)	(ft)	(ft)	(ft)			
4,900.0	4,879.8	4,776.5	4,616.6	11.7	22.2	-73.74	470.9	-622.3	750.2	717.6	32.61	23.008		
5,000.0	4,979.8	4,883.9	4,717.5	11.9	22.9	-72.94	490.8	-653.1	783.2	749.6	33.55	23.341		
5,100.0	5,079.8	4,987.1	4,815.3	12.1	23.6	-72.35	507.7	-681.3	814.2	779.7	34.44	23.639		
5,200.0	5,179.8	5,109.1	4,931.4	12.3	24.3	-71.66	528.1	-713.0	844.3	808.9	35.42	23.835		
5,300.0	5,279.8	5,245.7	5,063.1	12.5	25.0	-71.24	545.3	-745.0	870.7	834.4	36.37	23.942		
5,400.0	5,379.8	5,385.1	5,199.5	12.7	25.6	-70.98	557.9	-770.3	890.4	853.3	37.19	23.944		
5,500.0	5,479.8	5,538.4	5,350.8	12.9	26.1	-70.84	568.1	-792.8	906.6	868.7	37.93	23.901		
5,600.0	5,579.8	5,684.3	5,495.9	13.1	26.5	-70.77	573.9	-806.4	916.6	878.1	38.52	23.795		
5,700.0	5,679.8	5,781.4	5,592.7	13.3	26.7	-70.64	578.6	-813.0	924.7	885.7	38.96	23.736		
5,800.0	5,779.8	5,916.4	5,727.5	13.5	26.9	-70.50	583.2	-819.8	930.4	891.0	39.43	23.598		
5,900.0	5,879.8	6,018.1	5,829.0	13.7	27.1	-70.47	585.0	-823.3	934.3	894.5	39.81	23.470		
6,000.0	5,979.8	6,117.1	5,928.0	13.9	27.2	-70.52	585.7	-827.6	938.6	898.4	40.18	23.360		
6,100.0	6,079.8	6,221.2	6,031.9	14.1	27.4	-70.57	586.4	-831.7	942.6	902.0	40.56	23.239		
6,200.0	6,179.8	6,324.7	6,135.4	14.3	27.5	-70.64	586.4	-835.6	946.1	905.2	40.93	23.116		
6,300.0	6,279.8	6,435.6	6,246.2	14.5	27.7	-70.78	585.4	-839.5	949.1	907.8	41.29	22.984		
6,400.0	6,379.8	6,546.0	6,356.6	14.8	27.8	-70.92	583.7	-841.7	950.5	908.9	41.65	22.823		
6,500.0	6,479.8	6,635.0	6,445.6	15.0	27.9	-71.01	582.8	-843.7	952.2	910.2	41.98	22.684		
6,600.0	6,579.7	6,733.9	6,544.4	15.2	28.1	-161.13	582.2	-846.6	958.1	926.8	31.35	30.560		
6,700.0	6,678.2	6,841.8	6,652.3	15.4	28.2	-161.17	580.5	-849.2	975.8	945.1	30.78	31.706		

Company:	Synergy Resources	Local Co-ordinate Reference:	Well SRC Kelly Farms A-4-3CHZ
Project:	SEC.4-T5N-R66W	TVD Reference:	WELL @ 4765.5ft (Ensign Rig #131 - RKB - 13.5')
Reference Site:	SRC Kelly Farms Pad Sec.4-T5N-R66W	MD Reference:	WELL @ 4765.5ft (Ensign Rig #131 - RKB - 13.5')
Site Error:	0.0ft	North Reference:	True
Reference Well:	SRC Kelly Farms A-4-3CHZ	Survey Calculation Method:	Minimum Curvature
Well Error:	0.0ft	Output errors are at	2.00 sigma
Reference Wellbore	Wellbore #1	Database:	Landmark
Reference Design:	Plan #2 (4-21-14)	Offset TVD Reference:	Offset Datum

Offset Design Northridge Pad Sec.4-T5N-R66W - Northridge 4KD (Exist.) - Wellbore #1 - Wellbore #1													Offset Site Error:	0.0 ft
Survey Program: 124-MWD													Offset Well Error:	0.0 ft
Reference		Offset		Semi Major Axis			Distance							Warning
Measured Depth	Vertical Depth	Measured Depth	Vertical Depth	Reference	Offset	Highside Toolface	Offset Wellbore Centre		Between Centres	Between Ellipses	Minimum Separation	Separation Factor		
(ft)	(ft)	(ft)	(ft)	(ft)	(ft)	(°)	+N/-S (ft)	+E/-W (ft)	(ft)	(ft)	(ft)			
0.0	0.0	0.0	0.0	0.0	0.0	104.25	-74.3	292.6	302.1					
100.0	100.0	91.3	91.3	0.1	0.1	104.19	-73.9	292.3	301.5	301.3	0.22	1,396.472		
200.0	200.0	193.8	193.8	0.3	0.3	104.06	-72.9	291.1	300.1	299.5	0.63	476.511		
300.0	300.0	298.9	298.9	0.6	0.5	104.04	-72.2	288.5	297.6	296.5	1.09	273.698		
400.0	400.0	402.9	402.7	0.8	0.8	104.25	-72.1	284.1	293.4	291.9	1.55	189.875		
500.0	500.0	520.6	520.0	1.0	1.2	105.09	-73.8	273.8	285.3	283.2	2.06	138.547		
600.0	600.0	628.3	626.5	1.2	1.6	106.67	-77.4	258.3	272.3	269.7	2.58	105.679		
700.0	700.0	727.5	724.1	1.5	2.1	108.99	-83.3	242.0	258.3	255.2	3.10	83.384		
800.0	800.0	824.3	819.2	1.7	2.7	111.95	-91.0	225.7	245.3	241.6	3.68	66.684		
900.0	900.0	926.7	919.0	1.9	3.3	105.52	-103.0	206.1	232.8	228.1	4.72	49.358		
1,000.0	999.8	1,027.0	1,016.0	2.1	4.1	112.55	-115.5	183.9	221.4	215.7	5.76	38.466		
1,100.0	1,099.5	1,120.5	1,105.9	2.4	4.8	120.82	-128.3	161.5	214.6	207.7	6.89	31.127		
1,132.1	1,131.3	1,149.3	1,133.5	2.4	5.1	123.66	-132.7	154.5	214.1	206.8	7.27	29.442 CC, ES		
1,200.0	1,198.7	1,209.6	1,191.1	2.6	5.6	129.84	-142.5	139.8	216.5	208.4	8.07	26.835		
1,300.0	1,297.5	1,298.8	1,275.9	2.9	6.4	139.30	-159.0	117.5	229.0	219.9	9.17	24.970		
1,400.0	1,396.3	1,395.3	1,367.8	3.2	7.1	148.57	-175.1	92.5	247.0	236.9	10.08	24.499 SF		
1,500.0	1,495.0	1,482.5	1,450.9	3.5	7.7	155.59	-189.5	70.9	270.5	259.7	10.75	25.161		
1,600.0	1,593.8	1,572.2	1,536.5	3.8	8.4	161.74	-205.0	48.8	298.7	287.3	11.42	26.158		
1,700.0	1,692.5	1,662.8	1,622.9	4.1	9.2	166.85	-220.8	26.8	330.0	318.0	12.00	27.511		
1,800.0	1,791.3	1,752.8	1,708.8	4.5	9.9	171.08	-236.6	5.0	363.6	351.1	12.53	29.030		
1,900.0	1,890.0	1,844.3	1,795.9	4.8	10.7	174.84	-252.6	-18.1	398.9	385.8	13.10	30.448		
2,000.0	1,988.8	1,941.0	1,887.7	5.1	11.5	178.42	-268.2	-44.1	434.6	421.0	13.64	31.857		
2,100.0	2,087.5	2,033.8	1,976.2	5.5	12.2	-178.74	-282.5	-68.3	470.7	456.6	14.12	33.341		
2,200.0	2,186.3	2,120.0	2,058.3	5.8	12.9	-176.53	-296.4	-90.4	508.1	493.5	14.60	34.792		
2,300.0	2,285.0	2,214.0	2,148.0	6.2	13.7	-174.47	-311.7	-114.2	546.1	531.0	15.11	36.150		
2,400.0	2,383.8	2,296.3	2,226.6	6.5	14.3	-173.01	-325.6	-134.0	584.8	569.3	15.56	37.595		
2,500.0	2,482.5	2,401.8	2,327.4	6.9	15.2	-171.35	-343.3	-159.7	624.0	607.9	16.09	38.785		
2,600.0	2,581.3	2,504.5	2,425.7	7.2	15.9	-169.81	-357.5	-185.5	660.9	644.3	16.63	39.741		
2,700.0	2,680.4	2,589.0	2,506.8	7.5	16.5	-168.86	-370.0	-205.8	696.0	678.9	17.15	40.580		
2,800.0	2,780.0	2,671.3	2,585.6	7.7	17.2	-168.05	-383.5	-225.4	729.5	711.8	17.67	41.291		
2,900.0	2,879.8	2,775.8	2,685.3	7.9	18.1	-166.82	-399.2	-252.5	759.8	741.5	18.24	41.660		
3,000.0	2,979.8	2,854.1	2,759.7	8.1	18.8	-165.84	-410.4	-274.3	787.3	768.6	18.72	42.070		
3,100.0	3,079.8	2,964.0	2,864.0	8.3	19.8	-152.65	-426.1	-305.1	813.2	787.8	25.41	32.000		
3,200.0	3,179.8	3,037.9	2,934.0	8.4	20.4	-151.66	-436.4	-326.1	839.4	813.1	26.28	31.943		
3,300.0	3,279.8	3,125.2	3,016.1	8.6	21.3	-150.50	-450.0	-352.6	868.2	840.8	27.34	31.759		
3,400.0	3,379.8	3,245.0	3,129.2	8.8	22.3	-148.99	-467.1	-388.3	896.0	867.3	28.64	31.287		
3,500.0	3,479.8	3,338.0	3,217.3	9.0	23.1	-147.91	-479.4	-415.3	922.9	893.2	29.67	31.107		
3,600.0	3,579.8	3,407.5	3,282.9	9.1	23.8	-147.17	-489.9	-435.8	951.8	921.2	30.56	31.144		
3,700.0	3,679.8	3,527.9	3,396.6	9.3	24.9	-146.01	-508.8	-470.7	981.3	949.4	31.89	30.770		

Company:	Synergy Resources	Local Co-ordinate Reference:	Well SRC Kelly Farms A-4-3CHZ
Project:	SEC.4-T5N-R66W	TVD Reference:	WELL @ 4765.5ft (Ensign Rig #131 - RKB - 13.5')
Reference Site:	SRC Kelly Farms Pad Sec.4-T5N-R66W	MD Reference:	WELL @ 4765.5ft (Ensign Rig #131 - RKB - 13.5')
Site Error:	0.0ft	North Reference:	True
Reference Well:	SRC Kelly Farms A-4-3CHZ	Survey Calculation Method:	Minimum Curvature
Well Error:	0.0ft	Output errors are at	2.00 sigma
Reference Wellbore	Wellbore #1	Database:	Landmark
Reference Design:	Plan #2 (4-21-14)	Offset TVD Reference:	Offset Datum

Offset Design Northridge Pad Sec.4-T5N-R66W - Northridge 4ND (Exist.) - Northridge 4ND - Northridge 4ND													Offset Site Error: 0.0 ft	
Survey Program: 0-MWD													Offset Well Error: 0.0 ft	
Reference		Offset		Semi Major Axis		Distance								Warning
Measured Depth (ft)	Vertical Depth (ft)	Measured Depth (ft)	Vertical Depth (ft)	Reference (ft)	Offset (ft)	Highside Toolface (°)	Offset Wellbore Centre +N/-S (ft)	+E/-W (ft)	Between Centres (ft)	Between Ellipses (ft)	Minimum Separation (ft)	Separation Factor		
0.0	0.0	0.0	0.0	0.0	0.0	79.33	70.7	375.3	382.1					
100.0	100.0	87.5	87.5	0.1	0.1	79.33	70.7	375.3	381.9	381.7	0.21	1,812.013		
200.0	200.0	187.5	187.5	0.3	0.3	79.33	70.7	375.3	381.9	381.2	0.65	590.944		
300.0	300.0	287.5	287.5	0.6	0.5	79.33	70.7	375.3	381.9	380.8	1.10	348.505		
400.0	400.0	387.5	387.5	0.8	0.8	79.33	70.7	375.3	381.9	380.3	1.55	247.122		
500.0	500.0	487.5	487.5	1.0	1.0	79.33	70.7	375.3	381.9	379.9	1.99	191.433		
600.0	600.0	587.5	587.5	1.2	1.2	79.33	70.7	375.3	381.9	379.4	2.44	156.227		
700.0	700.0	687.5	687.5	1.5	1.4	79.33	70.7	375.3	381.9	379.0	2.89	131.958		
800.0	800.0	787.5	787.5	1.7	1.7	79.33	70.7	375.3	381.9	378.5	3.34	114.216		
900.0	900.0	887.5	887.5	1.9	1.9	67.90	70.7	375.3	381.2	377.4	3.79	100.537		
1,000.0	999.8	987.3	987.3	2.1	2.1	68.66	70.7	375.3	379.3	375.0	4.24	89.451		
1,100.0	1,099.5	1,087.0	1,087.0	2.4	2.3	69.95	70.7	375.3	376.2	371.5	4.69	80.135		
1,200.0	1,198.7	1,186.2	1,186.2	2.6	2.6	71.78	70.7	375.3	372.2	367.0	5.16	72.073		
1,300.0	1,297.5	1,285.0	1,285.0	2.9	2.8	74.06	70.7	375.3	367.6	362.0	5.66	64.976		
1,400.0	1,396.3	1,383.8	1,383.8	3.2	3.0	76.43	70.7	375.3	363.6	357.4	6.17	58.894		
1,500.0	1,495.0	1,482.5	1,482.5	3.5	3.2	78.84	70.7	375.3	360.1	353.4	6.70	53.724		
1,600.0	1,593.8	1,581.3	1,581.3	3.8	3.4	81.29	70.7	375.3	357.4	350.1	7.25	49.323		
1,700.0	1,692.5	1,680.0	1,680.0	4.1	3.7	83.77	70.7	375.3	355.3	347.5	7.80	45.571		
1,800.0	1,791.3	1,778.8	1,778.8	4.5	3.9	86.28	70.7	375.3	353.9	345.6	8.35	42.365		
1,900.0	1,890.0	1,877.5	1,877.5	4.8	4.1	88.80	70.7	375.3	353.2	344.3	8.92	39.620		
1,947.4	1,936.8	1,924.3	1,924.3	5.0	4.2	90.00	70.7	375.3	353.2	344.0	9.18	38.458		
2,000.0	1,988.8	1,976.3	1,976.3	5.1	4.3	91.33	70.7	375.3	353.3	343.8	9.48	37.266		
2,100.0	2,087.5	2,078.9	2,078.9	5.5	4.6	93.79	71.8	375.1	353.6	343.5	10.05	35.177		
2,200.0	2,186.3	2,183.5	2,183.4	5.8	4.8	95.76	76.5	374.5	353.0	342.4	10.63	33.219		
2,300.0	2,285.0	2,288.8	2,288.3	6.2	5.0	97.18	85.1	373.3	351.2	339.9	11.21	31.338		
2,400.0	2,383.8	2,394.5	2,393.2	6.5	5.3	98.06	97.5	371.5	347.8	336.0	11.79	29.491		
2,500.0	2,482.5	2,500.2	2,497.7	6.9	5.5	98.39	113.8	369.3	342.8	330.4	12.40	27.651		
2,600.0	2,581.3	2,605.8	2,601.3	7.2	5.8	98.05	133.9	366.5	336.1	323.0	13.01	25.826		
2,700.0	2,680.4	2,709.0	2,701.8	7.5	6.1	96.54	157.0	363.3	327.4	313.8	13.58	24.117		
2,800.0	2,780.0	2,807.8	2,797.9	7.7	6.5	94.23	180.0	360.1	318.3	304.2	14.13	22.534		
2,900.0	2,879.8	2,906.2	2,893.5	7.9	6.8	91.19	202.8	356.9	309.6	294.9	14.67	21.109		
3,000.0	2,979.8	3,003.9	2,988.5	8.1	7.1	87.39	225.5	353.8	301.8	286.6	15.19	19.869		
3,100.0	3,079.8	3,101.1	3,083.0	8.3	7.5	94.83	248.1	350.6	295.6	281.8	15.84	21.365		
3,200.0	3,179.8	3,198.3	3,177.5	8.4	7.9	90.44	270.7	347.5	291.2	276.9	16.39	20.358		
3,300.0	3,279.8	3,295.5	3,272.0	8.6	8.3	85.96	293.3	344.3	288.6	273.8	14.79	19.515		
3,385.2	3,365.0	3,378.4	3,352.5	8.8	8.6	82.09	312.6	341.7	287.9	272.7	15.22	18.917 CC		
3,400.0	3,379.8	3,392.7	3,366.5	8.8	8.7	81.42	315.9	341.2	287.9	272.6	15.30	18.824 ES		
3,500.0	3,479.8	3,489.9	3,461.0	9.0	9.1	76.90	338.5	338.1	289.2	273.3	15.83	18.271		
3,600.0	3,579.8	3,587.2	3,555.4	9.1	9.5	72.43	361.1	334.9	292.3	275.9	16.39	17.839		
3,700.0	3,679.8	3,684.4	3,649.9	9.3	9.9	68.09	383.7	331.8	297.2	280.3	16.97	17.515		
3,800.0	3,779.8	3,781.6	3,744.4	9.5	10.3	63.90	406.3	328.7	303.9	286.3	17.58	17.284		
3,900.0	3,879.8	3,878.8	3,838.9	9.7	10.8	59.90	428.9	325.5	312.2	294.0	18.22	17.135		
4,000.0	3,979.8	3,976.0	3,933.4	9.9	11.2	56.12	451.5	322.4	322.1	303.2	18.88	17.056		
4,100.0	4,079.8	4,073.2	4,027.9	10.1	11.6	52.56	474.1	319.2	333.2	313.7	19.56	17.036		
4,200.0	4,179.8	4,170.4	4,122.4	10.3	12.1	49.24	496.7	316.1	345.6	325.4	20.25	17.066		
4,300.0	4,279.8	4,267.6	4,216.9	10.5	12.5	46.15	519.3	313.0	359.2	338.2	20.96	17.138		
4,400.0	4,379.8	4,364.8	4,311.4	10.7	12.9	43.29	541.9	309.8	373.7	352.0	21.67	17.245		
4,500.0	4,479.8	4,462.0	4,405.9	10.9	13.4	40.63	564.5	306.7	389.1	366.7	22.39	17.380		
4,600.0	4,579.8	4,559.2	4,500.3	11.1	13.8	38.18	587.1	303.5	405.2	382.1	23.10	17.538		
4,700.0	4,679.8	4,656.4	4,594.8	11.3	14.3	35.92	609.7	300.4	422.1	398.2	23.83	17.715		
4,800.0	4,779.8	4,753.6	4,689.3	11.5	14.7	33.82	632.3	297.3	439.5	415.0	24.55	17.905		

CC - Min centre to center distance or convergent point, SF - min separation factor, ES - min ellipse separation

Company:	Synergy Resources	Local Co-ordinate Reference:	Well SRC Kelly Farms A-4-3CHZ
Project:	SEC.4-T5N-R66W	TVD Reference:	WELL @ 4765.5ft (Ensign Rig #131 - RKB - 13.5')
Reference Site:	SRC Kelly Farms Pad Sec.4-T5N-R66W	MD Reference:	WELL @ 4765.5ft (Ensign Rig #131 - RKB - 13.5')
Site Error:	0.0ft	North Reference:	True
Reference Well:	SRC Kelly Farms A-4-3CHZ	Survey Calculation Method:	Minimum Curvature
Well Error:	0.0ft	Output errors are at	2.00 sigma
Reference Wellbore	Wellbore #1	Database:	Landmark
Reference Design:	Plan #2 (4-21-14)	Offset TVD Reference:	Offset Datum

Offset Design Northridge Pad Sec.4-T5N-R66W - Northridge 4ND (Exist.) - Northridge 4ND - Northridge 4ND												Offset Site Error:	0.0 ft
Survey Program: 0-MWD												Offset Well Error:	0.0 ft
Reference		Offset		Semi Major Axis			Distance						Warning
Measured Depth	Vertical Depth	Measured Depth	Vertical Depth	Reference	Offset	Highside Toolface	Offset Wellbore Centre		Between Centres	Between Ellipses	Minimum Separation	Separation Factor	
(ft)	(ft)	(ft)	(ft)	(ft)	(ft)	(°)	+N/-S (ft)	+E/-W (ft)	(ft)	(ft)	(ft)		
4,900.0	4,879.8	4,850.8	4,783.8	11.7	15.2	31.89	654.9	294.1	457.5	432.2	25.27	18.106	
5,000.0	4,979.8	4,956.0	4,886.2	11.9	15.6	30.00	678.8	290.8	475.5	449.6	25.97	18.308	
5,100.0	5,079.8	5,069.5	4,997.5	12.1	16.0	28.40	700.7	287.8	491.2	464.6	26.63	18.444	
5,200.0	5,179.8	5,184.5	5,111.1	12.3	16.3	27.19	718.4	285.3	503.9	476.7	27.24	18.502	
5,300.0	5,279.8	5,300.9	5,226.7	12.5	16.6	26.32	731.7	283.5	513.4	485.6	27.78	18.481	
5,400.0	5,379.8	5,418.2	5,343.7	12.7	16.9	25.78	740.5	282.3	519.6	491.4	28.26	18.388	
5,500.0	5,479.8	5,536.0	5,461.4	12.9	17.1	25.53	744.4	281.7	522.5	493.8	28.68	18.218	
5,600.0	5,579.8	5,641.9	5,567.3	13.1	17.2	25.52	744.7	281.7	522.7	493.6	29.05	17.991	
5,700.0	5,679.8	5,741.9	5,667.3	13.3	17.4	25.52	744.7	281.7	522.7	493.2	29.42	17.764	
5,800.0	5,779.8	5,841.9	5,767.3	13.5	17.5	25.52	744.7	281.7	522.7	492.9	29.80	17.541	
5,900.0	5,879.8	5,941.9	5,867.3	13.7	17.7	25.52	744.7	281.7	522.7	492.5	30.17	17.323	
6,000.0	5,979.8	6,041.9	5,967.3	13.9	17.8	25.52	744.7	281.7	522.7	492.1	30.55	17.109	
6,100.0	6,079.8	6,141.9	6,067.3	14.1	18.0	25.52	744.7	281.7	522.7	491.7	30.93	16.899	
6,200.0	6,179.8	6,241.9	6,167.3	14.3	18.2	25.52	744.7	281.7	522.7	491.4	31.31	16.694	
6,300.0	6,279.8	6,341.9	6,267.3	14.5	18.3	25.52	744.7	281.7	522.7	491.0	31.69	16.492	
6,400.0	6,379.8	6,441.9	6,367.3	14.8	18.5	25.52	744.7	281.7	522.7	490.6	32.08	16.295	
6,500.0	6,479.8	6,541.9	6,467.3	15.0	18.7	25.52	744.7	281.7	522.7	490.2	32.46	16.101	
6,600.0	6,579.7	6,641.8	6,567.2	15.2	18.8	-65.03	744.7	281.7	521.2	490.3	30.83	16.906	
6,700.0	6,678.2	6,740.3	6,665.7	15.4	19.0	-67.21	744.7	281.7	514.3	483.2	31.05	16.565	
6,800.0	6,773.4	6,835.5	6,760.9	15.6	19.1	-71.11	744.7	281.7	503.0	471.9	31.17	16.136	
6,900.0	6,863.4	6,925.5	6,850.9	15.9	19.3	-76.49	744.7	281.7	489.8	458.4	31.39	15.602	
7,000.0	6,946.6	7,008.7	6,934.1	16.3	19.4	-82.82	744.7	281.7	478.0	446.2	31.83	15.016	
7,100.0	7,021.2	7,083.3	7,008.7	16.9	19.6	-89.27	744.7	281.7	472.1	439.6	32.49	14.531	
7,112.0	7,029.5	7,091.6	7,017.0	17.0	19.6	-90.00	744.7	281.7	472.1	439.5	32.59	14.483	
7,200.0	7,085.9	7,148.0	7,073.4	17.7	19.7	-94.84	744.7	281.7	476.9	443.6	33.30	14.322 SF	
7,300.0	7,139.3	7,201.4	7,126.8	18.8	19.8	-98.68	744.7	281.7	495.9	461.6	34.26	14.473	
7,400.0	7,180.4	7,242.5	7,167.9	20.2	19.8	-100.14	744.7	281.7	530.9	495.4	35.57	14.927	
7,500.0	7,208.5	7,270.6	7,196.0	21.9	19.9	-98.71	744.7	281.7	581.1	543.7	37.40	15.536	
7,600.0	7,223.0	7,285.1	7,210.5	23.8	19.9	-93.99	744.7	281.7	643.8	604.0	39.75	16.195	
7,700.0	7,225.0	7,287.1	7,212.5	25.8	19.9	-90.00	744.7	281.7	715.5	673.5	42.04	17.018	
7,800.0	7,225.0	7,287.1	7,212.5	28.0	19.9	-90.00	744.7	281.7	793.4	749.1	44.24	17.934	
7,900.0	7,225.0	7,287.1	7,212.5	30.3	19.9	-90.00	744.7	281.7	875.8	829.2	46.54	18.819	
8,000.0	7,225.0	7,287.1	7,212.5	32.6	19.9	-90.00	744.7	281.7	961.5	912.6	48.92	19.656	

Company:	Synergy Resources	Local Co-ordinate Reference:	Well SRC Kelly Farms A-4-3CHZ
Project:	SEC.4-T5N-R66W	TVD Reference:	WELL @ 4765.5ft (Ensign Rig #131 - RKB - 13.5')
Reference Site:	SRC Kelly Farms Pad Sec.4-T5N-R66W	MD Reference:	WELL @ 4765.5ft (Ensign Rig #131 - RKB - 13.5')
Site Error:	0.0ft	North Reference:	True
Reference Well:	SRC Kelly Farms A-4-3CHZ	Survey Calculation Method:	Minimum Curvature
Well Error:	0.0ft	Output errors are at	2.00 sigma
Reference Wellbore	Wellbore #1	Database:	Landmark
Reference Design:	Plan #2 (4-21-14)	Offset TVD Reference:	Offset Datum

Offset Design													Offset Site Error:	0.0ft
Survey Program: 0-MWD													Offset Well Error:	0.0ft
Reference		Offset		Semi Major Axis			Distance							Warning
Measured Depth (ft)	Vertical Depth (ft)	Measured Depth (ft)	Vertical Depth (ft)	Reference (ft)	Offset (ft)	Highside Toolface (°)	Offset Wellbore Centre +N/-S (ft)	+E/-W (ft)	Between Centres (ft)	Between Ellipses (ft)	Minimum Separation (ft)	Separation Factor		
0.0	0.0	2.0	2.0	0.0	0.0	-130.98	-30.2	-34.8	46.1	46.1	0.00	N/A		
100.0	100.0	102.0	102.0	0.1	0.1	-130.98	-30.2	-34.8	46.1	45.9	0.23	201.074		
200.0	200.0	202.0	202.0	0.3	0.3	-130.98	-30.2	-34.8	46.1	45.4	0.68	67.912		
300.0	300.0	302.0	302.0	0.6	0.6	-130.98	-30.2	-34.8	46.1	45.0	1.13	40.856		
400.0	400.0	402.0	402.0	0.8	0.8	-130.98	-30.2	-34.8	46.1	44.5	1.58	29.216		
500.0	500.0	502.0	502.0	1.0	1.0	-130.98	-30.2	-34.8	46.1	44.1	2.03	22.738		
566.0	566.0	568.0	568.0	1.2	1.2	-130.98	-30.2	-34.8	46.1	43.8	2.32	19.836 CC		
600.0	600.0	602.0	602.0	1.2	1.2	-130.99	-30.2	-34.8	46.1	43.6	2.48	18.615 ES		
700.0	700.0	701.3	701.3	1.5	1.4	-132.97	-32.0	-34.3	46.9	44.0	2.90	16.178		
800.0	800.0	800.3	800.2	1.7	1.6	-138.38	-37.0	-32.8	49.5	46.2	3.31	14.958		
900.0	900.0	899.5	899.0	1.9	1.8	-157.85	-44.6	-30.6	55.8	52.0	3.74	14.916		
1,000.0	999.8	998.7	997.8	2.1	2.0	-164.92	-52.4	-28.3	66.4	62.2	4.17	15.903		
1,100.0	1,099.5	1,097.3	1,096.2	2.4	2.3	-170.41	-60.1	-26.1	81.1	76.5	4.61	17.608		
1,200.0	1,198.7	1,195.3	1,193.9	2.6	2.5	-174.39	-67.9	-23.8	99.8	94.8	5.04	19.815		
1,300.0	1,297.5	1,292.7	1,290.9	2.9	2.8	-177.20	-75.5	-21.6	121.9	116.4	5.47	22.286		
1,400.0	1,396.3	1,390.0	1,387.9	3.2	3.0	-179.16	-83.2	-19.3	144.7	138.8	5.91	24.472		
1,500.0	1,495.0	1,487.3	1,484.8	3.5	3.3	179.41	-90.8	-17.1	167.6	161.2	6.36	26.353		
1,600.0	1,593.8	1,584.5	1,581.8	3.8	3.5	178.32	-98.5	-14.8	190.5	183.7	6.81	27.978		
1,700.0	1,692.5	1,681.8	1,678.7	4.1	3.8	177.47	-106.2	-12.6	213.5	206.3	7.26	29.399		
1,800.0	1,791.3	1,779.1	1,775.6	4.5	4.0	176.78	-113.8	-10.4	236.6	228.9	7.72	30.644		
1,900.0	1,890.0	1,876.4	1,872.6	4.8	4.3	176.22	-121.5	-8.1	259.7	251.5	8.18	31.744		
2,000.0	1,988.8	1,973.6	1,969.5	5.1	4.5	175.75	-129.1	-5.9	282.7	274.1	8.64	32.720		
2,100.0	2,087.5	2,070.9	2,066.5	5.5	4.8	175.34	-136.8	-3.6	305.9	296.8	9.10	33.593		
2,200.0	2,186.3	2,168.2	2,163.4	5.8	5.1	175.00	-144.4	-1.4	329.0	319.4	9.57	34.377		
2,300.0	2,285.0	2,265.5	2,260.4	6.2	5.3	174.70	-152.1	0.8	352.1	342.1	10.04	35.085		
2,400.0	2,383.8	2,362.7	2,357.3	6.5	5.6	174.44	-159.8	3.1	375.2	364.7	10.50	35.726		
2,500.0	2,482.5	2,460.0	2,454.3	6.9	5.9	174.20	-167.4	5.3	398.4	387.4	10.97	36.310		
2,600.0	2,581.3	2,557.3	2,551.3	7.2	6.1	174.01	-175.1	7.6	421.4	409.9	11.45	36.815		
2,700.0	2,680.4	2,655.2	2,648.8	7.5	6.4	173.83	-182.8	9.8	441.7	429.8	11.89	37.143		
2,800.0	2,780.0	2,753.7	2,747.0	7.7	6.7	173.61	-190.5	12.1	458.6	446.3	12.33	37.207		
2,900.0	2,879.8	2,867.5	2,860.5	7.9	6.9	173.38	-198.0	14.2	470.8	458.1	12.75	36.939		
3,000.0	2,979.8	2,985.5	2,978.4	8.1	7.1	173.29	-201.2	15.2	475.9	462.7	13.15	36.180		
3,100.0	3,079.8	3,088.8	3,081.8	8.3	7.3	-175.02	-201.2	15.2	476.0	460.6	15.47	30.775		
3,200.0	3,179.8	3,188.8	3,181.8	8.4	7.5	-175.02	-201.2	15.2	476.0	460.2	15.82	30.100		
3,300.0	3,279.8	3,288.8	3,281.8	8.6	7.7	-175.02	-201.2	15.2	476.0	459.9	16.17	29.448		
3,400.0	3,379.8	3,388.8	3,381.8	8.8	7.8	-175.02	-201.2	15.2	476.0	459.5	16.52	28.815		
3,500.0	3,479.8	3,488.8	3,481.8	9.0	8.0	-175.02	-201.2	15.2	476.0	459.1	16.88	28.201		
3,600.0	3,579.8	3,588.8	3,581.8	9.1	8.2	-175.02	-201.2	15.2	476.0	458.8	17.24	27.606		
3,700.0	3,679.8	3,688.8	3,681.8	9.3	8.4	-175.02	-201.2	15.2	476.0	458.4	17.61	27.030		
3,800.0	3,779.8	3,788.8	3,781.8	9.5	8.6	-175.02	-201.2	15.2	476.0	458.0	17.98	26.472		
3,900.0	3,879.8	3,888.8	3,881.8	9.7	8.7	-175.02	-201.2	15.2	476.0	457.7	18.36	25.931		
4,000.0	3,979.8	3,988.8	3,981.8	9.9	8.9	-175.02	-201.2	15.2	476.0	457.3	18.74	25.407		
4,100.0	4,079.8	4,088.8	4,081.8	10.1	9.1	-175.02	-201.2	15.2	476.0	456.9	19.12	24.900		
4,200.0	4,179.8	4,188.8	4,181.8	10.3	9.3	-175.02	-201.2	15.2	476.0	456.5	19.50	24.410		
4,300.0	4,279.8	4,288.8	4,281.8	10.5	9.5	-175.02	-201.2	15.2	476.0	456.1	19.89	23.935		
4,400.0	4,379.8	4,388.8	4,381.8	10.7	9.7	-175.02	-201.2	15.2	476.0	455.8	20.28	23.475		
4,500.0	4,479.8	4,488.8	4,481.8	10.9	9.9	-175.02	-201.2	15.2	476.0	455.4	20.67	23.029		
4,600.0	4,579.8	4,588.8	4,581.8	11.1	10.1	-175.02	-201.2	15.2	476.0	455.0	21.06	22.598		
4,700.0	4,679.8	4,688.8	4,681.8	11.3	10.3	-175.02	-201.2	15.2	476.0	454.6	21.46	22.181		
4,800.0	4,779.8	4,788.8	4,781.8	11.5	10.5	-175.02	-201.2	15.2	476.0	454.2	21.86	21.776		
4,900.0	4,879.8	4,888.8	4,881.8	11.7	10.7	-175.02	-201.2	15.2	476.0	453.8	22.26	21.384		

CC - Min centre to center distance or convergent point, SF - min separation factor, ES - min ellipse separation

Company:	Synergy Resources	Local Co-ordinate Reference:	Well SRC Kelly Farms A-4-3CHZ
Project:	SEC.4-T5N-R66W	TVD Reference:	WELL @ 4765.5ft (Ensign Rig #131 - RKB - 13.5')
Reference Site:	SRC Kelly Farms Pad Sec.4-T5N-R66W	MD Reference:	WELL @ 4765.5ft (Ensign Rig #131 - RKB - 13.5')
Site Error:	0.0ft	North Reference:	True
Reference Well:	SRC Kelly Farms A-4-3CHZ	Survey Calculation Method:	Minimum Curvature
Well Error:	0.0ft	Output errors are at	2.00 sigma
Reference Wellbore	Wellbore #1	Database:	Landmark
Reference Design:	Plan #2 (4-21-14)	Offset TVD Reference:	Offset Datum

Offset Design		SRC Kelly Farms Pad Sec.4-T5N-R66W - SRC Kelly Farms 22-4-3CHZ - Wellbore #1 - Plan #2 (4-21-1										Offset Site Error:		0.0 ft	
Survey Program: 0-MWD												Offset Well Error:		0.0 ft	
Reference		Offset		Semi Major Axis			Distance								
Measured Depth (ft)	Vertical Depth (ft)	Measured Depth (ft)	Vertical Depth (ft)	Reference (ft)	Offset (ft)	Highside Toolface (°)	Offset Wellbore Centre +N/-S (ft)	+E/-W (ft)	Between Centres (ft)	Between Ellipses (ft)	Minimum Separation (ft)	Separation Factor	Warning		
5,000.0	4,979.8	4,988.8	4,981.8	11.9	10.9	-175.02	-201.2	15.2	476.0	453.4	22.66	21.005			
5,100.0	5,079.8	5,088.8	5,081.8	12.1	11.1	-175.02	-201.2	15.2	476.0	453.0	23.07	20.637			
5,200.0	5,179.8	5,188.8	5,181.8	12.3	11.3	-175.02	-201.2	15.2	476.0	452.6	23.47	20.280			
5,300.0	5,279.8	5,288.8	5,281.8	12.5	11.5	-175.02	-201.2	15.2	476.0	452.1	23.88	19.934			
5,400.0	5,379.8	5,388.8	5,381.8	12.7	11.7	-175.02	-201.2	15.2	476.0	451.7	24.29	19.598			
5,500.0	5,479.8	5,488.8	5,481.8	12.9	11.9	-175.02	-201.2	15.2	476.0	451.3	24.70	19.273			
5,600.0	5,579.8	5,588.8	5,581.8	13.1	12.1	-175.02	-201.2	15.2	476.0	450.9	25.11	18.957			
5,700.0	5,679.8	5,688.8	5,681.8	13.3	12.3	-175.02	-201.2	15.2	476.0	450.5	25.52	18.650			
5,800.0	5,779.8	5,788.8	5,781.8	13.5	12.5	-175.02	-201.2	15.2	476.0	450.1	25.94	18.352			
5,900.0	5,879.8	5,888.8	5,881.8	13.7	12.7	-175.02	-201.2	15.2	476.0	449.7	26.35	18.063			
6,000.0	5,979.8	5,988.8	5,981.8	13.9	12.9	-175.02	-201.2	15.2	476.0	449.3	26.77	17.782			
6,100.0	6,079.8	6,088.8	6,081.8	14.1	13.1	-175.02	-201.2	15.2	476.0	448.8	27.19	17.509			
6,200.0	6,179.8	6,188.8	6,181.8	14.3	13.3	-175.02	-201.2	15.2	476.0	448.4	27.61	17.244			
6,300.0	6,279.8	6,288.8	6,281.8	14.5	13.5	-175.02	-201.2	15.2	476.0	448.0	28.03	16.986			
6,400.0	6,379.8	6,388.8	6,381.8	14.8	13.8	-175.02	-201.2	15.2	476.0	447.6	28.45	16.735			
6,500.0	6,479.8	6,488.8	6,481.8	15.0	14.0	-175.02	-201.2	15.2	476.0	447.2	28.87	16.491			
6,600.0	6,579.7	6,593.4	6,586.2	15.2	14.2	94.79	-201.2	19.7	476.0	447.5	28.44	16.738			
6,700.0	6,678.2	6,699.2	6,690.0	15.4	14.4	94.58	-201.3	39.3	475.8	446.9	28.92	16.455			
6,800.0	6,773.4	6,804.6	6,789.6	15.6	14.7	94.27	-201.3	73.8	475.6	446.1	29.48	16.134			
6,900.0	6,863.4	6,909.6	6,882.6	15.9	15.1	93.88	-201.3	122.3	475.3	445.1	30.19	15.745			
7,000.0	6,946.6	7,014.0	6,967.0	16.3	15.6	93.42	-201.4	183.5	475.0	443.8	31.16	15.245			
7,100.0	7,021.2	7,117.7	7,041.3	16.9	16.3	92.88	-201.4	255.8	474.7	442.2	32.52	14.599			
7,200.0	7,085.9	7,220.7	7,103.9	17.7	17.3	92.29	-201.5	337.4	474.4	440.0	34.38	13.797			
7,300.0	7,139.3	7,322.9	7,153.9	18.8	18.5	91.65	-201.6	426.5	474.1	437.3	36.84	12.872			
7,400.0	7,180.4	7,424.4	7,190.4	20.2	20.1	90.99	-201.6	521.1	473.9	434.1	39.87	11.886			
7,500.0	7,208.5	7,525.0	7,213.1	21.9	21.9	90.31	-201.7	619.0	473.8	430.4	43.43	10.910			
7,600.0	7,223.0	7,624.8	7,221.9	23.8	23.9	89.62	-201.8	718.3	473.7	426.3	47.36	10.002			
7,700.0	7,225.0	7,724.5	7,222.0	25.8	26.1	89.40	-201.9	818.1	473.7	422.1	51.59	9.182			
7,800.0	7,225.0	7,824.5	7,222.0	28.0	28.3	89.40	-202.0	918.1	473.7	417.6	56.05	8.451			
7,900.0	7,225.0	7,924.5	7,222.0	30.3	30.7	89.40	-202.1	1,018.1	473.7	413.0	60.70	7.803			
8,000.0	7,225.0	8,024.5	7,222.0	32.6	33.1	89.40	-202.2	1,118.1	473.7	408.1	65.51	7.230			
8,100.0	7,225.0	8,124.5	7,222.0	35.1	35.6	89.40	-202.4	1,218.1	473.6	403.2	70.44	6.724			
8,200.0	7,225.0	8,224.5	7,222.0	37.5	38.1	89.40	-202.5	1,318.1	473.6	398.2	75.46	6.277			
8,300.0	7,225.0	8,324.5	7,222.0	40.1	40.7	89.40	-202.6	1,418.1	473.6	393.1	80.56	5.879			
8,400.0	7,225.0	8,424.5	7,222.0	42.6	43.3	89.40	-202.7	1,518.1	473.6	387.9	85.73	5.525			
8,500.0	7,225.0	8,524.5	7,222.0	45.2	45.9	89.40	-202.8	1,618.1	473.6	382.7	90.95	5.207			
8,600.0	7,225.0	8,624.5	7,222.0	47.8	48.5	89.40	-202.9	1,718.1	473.6	377.4	96.21	4.922			
8,700.0	7,225.0	8,724.5	7,222.0	50.5	51.2	89.40	-203.0	1,818.1	473.6	372.1	101.52	4.665			
8,800.0	7,225.0	8,824.5	7,222.0	53.1	53.9	89.40	-203.2	1,918.1	473.6	366.7	106.85	4.432			
8,900.0	7,225.0	8,924.5	7,222.0	55.8	56.6	89.40	-203.3	2,018.1	473.6	361.4	112.21	4.220			
9,000.0	7,225.0	9,024.5	7,222.0	58.5	59.3	89.40	-203.4	2,118.1	473.6	356.0	117.60	4.027			
9,100.0	7,225.0	9,124.5	7,222.0	61.2	62.0	89.40	-203.5	2,218.1	473.6	350.6	123.01	3.850			
9,200.0	7,225.0	9,224.5	7,222.0	63.9	64.7	89.40	-203.6	2,318.1	473.6	345.1	128.43	3.687			
9,300.0	7,225.0	9,324.5	7,222.0	66.6	67.4	89.40	-203.7	2,418.1	473.5	339.7	133.87	3.537			
9,400.0	7,225.0	9,424.5	7,222.0	69.3	70.1	89.40	-203.8	2,518.1	473.5	334.2	139.33	3.399			
9,500.0	7,225.0	9,524.5	7,222.0	72.0	72.9	89.39	-204.0	2,618.1	473.5	328.7	144.80	3.270			
9,600.0	7,225.0	9,624.5	7,222.0	74.8	75.6	89.39	-204.1	2,718.1	473.5	323.2	150.27	3.151			
9,700.0	7,225.0	9,724.5	7,222.0	77.5	78.4	89.39	-204.2	2,818.1	473.5	317.7	155.76	3.040			
9,800.0	7,225.0	9,824.5	7,222.0	80.3	81.1	89.39	-204.3	2,918.1	473.5	312.2	161.26	2.936			
9,900.0	7,225.0	9,924.5	7,222.0	83.0	83.9	89.39	-204.4	3,018.1	473.5	306.7	166.76	2.839			

CC - Min centre to center distance or convergent point, SF - min separation factor, ES - min ellipse separation

Company:	Synergy Resources	Local Co-ordinate Reference:	Well SRC Kelly Farms A-4-3CHZ
Project:	SEC.4-T5N-R66W	TVD Reference:	WELL @ 4765.5ft (Ensign Rig #131 - RKB - 13.5')
Reference Site:	SRC Kelly Farms Pad Sec.4-T5N-R66W	MD Reference:	WELL @ 4765.5ft (Ensign Rig #131 - RKB - 13.5')
Site Error:	0.0ft	North Reference:	True
Reference Well:	SRC Kelly Farms A-4-3CHZ	Survey Calculation Method:	Minimum Curvature
Well Error:	0.0ft	Output errors are at	2.00 sigma
Reference Wellbore	Wellbore #1	Database:	Landmark
Reference Design:	Plan #2 (4-21-14)	Offset TVD Reference:	Offset Datum

Offset Design		SRC Kelly Farms Pad Sec.4-T5N-R66W - SRC Kelly Farms 22-4-3CHZ - Wellbore #1 - Plan #2 (4-21-1										Offset Site Error:		0.0 ft	
Survey Program: 0-MWD												Offset Well Error:		0.0 ft	
Reference		Offset		Semi Major Axis			Distance							Warning	
Measured Depth (ft)	Vertical Depth (ft)	Measured Depth (ft)	Vertical Depth (ft)	Reference (ft)	Offset (ft)	Highside Toolface (°)	Offset Wellbore Centre		Between Centres (ft)	Between Ellipses (ft)	Minimum Separation (ft)	Separation Factor			
							+N/-S (ft)	+E/-W (ft)							
10,000.0	7,225.0	10,024.5	7,222.0	85.7	86.6	89.39	-204.5	3,118.1	473.5	301.2	172.28	2.748			
10,100.0	7,225.0	10,124.5	7,222.0	88.5	89.4	89.39	-204.6	3,218.1	473.5	295.7	177.80	2.663			
10,200.0	7,225.0	10,224.5	7,222.0	91.3	92.1	89.39	-204.7	3,318.1	473.5	290.1	183.32	2.583			
10,300.0	7,225.0	10,324.5	7,222.0	94.0	94.9	89.39	-204.9	3,418.1	473.5	284.6	188.85	2.507			
10,400.0	7,225.0	10,424.5	7,222.0	96.8	97.7	89.39	-205.0	3,518.1	473.5	279.1	194.39	2.436			
10,500.0	7,225.0	10,524.5	7,222.0	99.6	100.5	89.39	-205.1	3,618.1	473.4	273.5	199.93	2.368			
10,600.0	7,225.0	10,624.5	7,222.0	102.3	103.2	89.39	-205.2	3,718.1	473.4	268.0	205.47	2.304			
10,700.0	7,225.0	10,724.5	7,222.0	105.1	106.0	89.39	-205.3	3,818.1	473.4	262.4	211.02	2.244			
10,800.0	7,225.0	10,824.5	7,222.0	107.9	108.8	89.39	-205.4	3,918.1	473.4	256.8	216.57	2.186			
10,900.0	7,225.0	10,924.5	7,222.0	110.6	111.6	89.39	-205.5	4,018.1	473.4	251.3	222.13	2.131			
11,000.0	7,225.0	11,024.5	7,222.0	113.4	114.3	89.39	-205.7	4,118.1	473.4	245.7	227.68	2.079			
11,100.0	7,225.0	11,124.5	7,222.0	116.2	117.1	89.39	-205.8	4,218.1	473.4	240.2	233.24	2.030			
11,200.0	7,225.0	11,224.5	7,222.0	119.0	119.9	89.39	-205.9	4,318.1	473.4	234.6	238.81	1.982			
11,300.0	7,225.0	11,324.5	7,222.0	121.8	122.7	89.39	-206.0	4,418.1	473.4	229.0	244.37	1.937			
11,400.0	7,225.0	11,424.5	7,222.0	124.5	125.5	89.39	-206.1	4,518.1	473.4	223.4	249.94	1.894			
11,500.0	7,225.0	11,524.5	7,222.0	127.3	128.3	89.39	-206.2	4,618.1	473.4	217.8	255.51	1.853			
11,600.0	7,225.0	11,624.5	7,222.0	130.1	131.0	89.39	-206.3	4,718.1	473.4	212.3	261.08	1.813			
11,700.0	7,225.0	11,724.5	7,222.0	132.9	133.8	89.39	-206.5	4,818.1	473.3	206.7	266.66	1.775			
11,800.0	7,225.0	11,824.5	7,222.0	135.7	136.6	89.39	-206.6	4,918.1	473.3	201.1	272.24	1.739			
11,900.0	7,225.0	11,924.5	7,222.0	138.5	139.4	89.39	-206.7	5,018.1	473.3	195.5	277.81	1.704			
11,952.6	7,225.0	11,977.1	7,222.0	139.9	140.9	89.39	-206.7	5,070.6	473.3	192.6	280.75	1.686			
12,000.0	7,225.0	11,988.0	7,222.0	141.3	141.2	89.39	-206.8	5,081.5	474.7	192.4	282.37	1.681 SF			
12,005.7	7,225.0	11,988.0	7,222.0	141.4	141.2	89.39	-206.8	5,081.5	475.2	192.7	282.53	1.682			

SRC Kelly Farms Pad Sec.4-T5N-R66W - SRC Kelly Farms 22-4-3NHZ - Wellbore #1 - Plan #2 (4-21-1)													Offset Site Error:	0.0 ft
Survey Program: 0-MWD													Offset Well Error:	0.0 ft
Reference		Offset		Semi Major Axis			Distance							
Measured Depth	Vertical Depth	Measured Depth	Vertical Depth	Reference	Offset	Highside Toolface	Offset Wellbore Centre		Between Centres	Between Ellipses	Minimum Separation	Separation Factor	Warning	
(ft)	(ft)	(ft)	(ft)	(ft)	(ft)	(°)	+N/-S (ft)	+E/-W (ft)	(ft)	(ft)	(ft)			
0.0	0.0	0.0	0.0	0.0	0.0	168.67	-22.2	4.5	22.7					
100.0	100.0	99.0	99.0	0.1	0.1	168.67	-22.2	4.5	22.7	22.4	0.22	101.345		
200.0	200.0	199.0	199.0	0.3	0.3	168.67	-22.2	4.5	22.7	22.0	0.67	33.725		
300.0	300.0	299.0	299.0	0.6	0.6	168.67	-22.2	4.5	22.7	21.5	1.12	20.208		
400.0	400.0	399.0	399.0	0.8	0.8	168.67	-22.2	4.5	22.7	21.1	1.57	14.426		
500.0	500.0	499.0	499.0	1.0	1.0	168.67	-22.2	4.5	22.7	20.6	2.02	11.217		
600.0	600.0	599.0	599.0	1.2	1.2	168.67	-22.2	4.5	22.7	20.2	2.47	9.176		
700.0	700.0	699.0	699.0	1.5	1.5	168.67	-22.2	4.5	22.7	19.7	2.92	7.763		
800.0	800.0	799.0	799.0	1.7	1.7	168.67	-22.2	4.5	22.7	19.3	3.37	6.727 CC, ES		
900.0	900.0	899.0	899.0	1.9	1.9	158.57	-22.2	4.5	24.3	20.5	3.82	6.358		
1,000.0	999.8	998.8	998.8	2.1	2.1	162.29	-22.2	4.5	29.2	24.9	4.27	6.847		
1,100.0	1,099.5	1,099.6	1,099.6	2.4	2.4	167.49	-20.7	3.7	36.1	31.4	4.71	7.656		
1,200.0	1,198.7	1,200.4	1,200.3	2.6	2.6	174.02	-16.0	1.3	43.5	38.4	5.15	8.460		
1,300.0	1,297.5	1,301.0	1,300.4	2.9	2.8	-179.06	-8.2	-2.6	51.8	46.3	5.59	9.269		
1,400.0	1,396.3	1,400.4	1,399.4	3.2	3.1	-173.52	0.4	-6.9	60.5	54.4	6.06	9.971		
1,500.0	1,495.0	1,499.9	1,498.4	3.5	3.3	-169.40	9.0	-11.1	69.5	62.9	6.55	10.616		
1,600.0	1,593.8	1,599.4	1,597.5	3.8	3.6	-166.23	17.6	-15.4	78.8	71.8	7.04	11.193		
1,700.0	1,692.5	1,698.9	1,696.5	4.1	3.8	-163.74	26.1	-19.7	88.3	80.8	7.54	11.703		
1,800.0	1,791.3	1,798.4	1,795.5	4.5	4.1	-161.73	34.7	-24.0	97.9	89.9	8.06	12.153		
1,900.0	1,890.0	1,897.8	1,894.5	4.8	4.3	-160.08	43.3	-28.3	107.7	99.1	8.58	12.549		
2,000.0	1,988.8	1,995.9	1,992.2	5.1	4.6	-159.08	51.0	-32.2	117.9	108.8	9.07	12.991		
2,100.0	2,087.5	2,093.0	2,089.1	5.5	4.8	-159.45	55.9	-34.6	129.8	120.3	9.51	13.647		
2,200.0	2,186.3	2,189.5	2,185.6	5.8	4.9	-160.88	57.7	-35.5	143.5	133.6	9.92	14.463		
2,300.0	2,285.0	2,287.9	2,284.0	6.2	5.1	-162.73	57.8	-35.5	158.5	148.2	10.34	15.325		
2,400.0	2,383.8	2,386.6	2,382.8	6.5	5.3	-164.27	57.8	-35.5	173.6	162.9	10.78	16.101		
2,500.0	2,482.5	2,485.4	2,481.5	6.9	5.5	-165.57	57.8	-35.5	188.9	177.7	11.23	16.816		
2,600.0	2,581.3	2,584.2	2,580.3	7.2	5.7	-166.68	57.8	-35.5	204.0	192.3	11.68	17.464		
2,700.0	2,680.4	2,683.3	2,679.4	7.5	6.0	-167.52	57.8	-35.5	216.6	204.5	12.10	17.902		
2,800.0	2,780.0	2,782.9	2,779.0	7.7	6.2	-168.08	57.8	-35.5	225.8	213.3	12.50	18.058		
2,900.0	2,879.8	2,882.7	2,878.8	7.9	6.4	-168.40	57.8	-35.5	231.6	218.7	12.90	17.960		
3,000.0	2,979.8	2,982.7	2,978.8	8.1	6.6	-168.53	57.8	-35.5	234.0	220.7	13.27	17.630		
3,100.0	3,079.8	3,082.7	3,078.8	8.3	6.8	-156.84	57.8	-35.5	234.1	219.2	14.92	15.692		
3,200.0	3,179.8	3,182.7	3,178.8	8.4	7.0	-156.84	57.8	-35.5	234.1	218.8	15.31	15.285		
3,300.0	3,279.8	3,282.7	3,278.8	8.6	7.3	-156.84	57.8	-35.5	234.1	218.4	15.71	14.897		
3,400.0	3,379.8	3,382.7	3,378.8	8.8	7.5	-156.84	57.8	-35.5	234.1	218.0	16.11	14.526		
3,500.0	3,479.8	3,482.7	3,478.8	9.0	7.7	-156.84	57.8	-35.5	234.1	217.6	16.52	14.171		
3,600.0	3,579.8	3,582.7	3,578.8	9.1	7.9	-156.84	57.8	-35.5	234.1	217.2	16.92	13.831		
3,700.0	3,679.8	3,682.7	3,678.8	9.3	8.1	-156.84	57.8	-35.5	234.1	216.7	17.33	13.506		
3,800.0	3,779.8	3,782.7	3,778.8	9.5	8.4	-156.84	57.8	-35.5	234.1	216.3	17.74	13.194		
3,900.0	3,879.8	3,882.7	3,878.8	9.7	8.6	-156.84	57.8	-35.5	234.1	215.9	18.15	12.895		
4,000.0	3,979.8	3,982.7	3,978.8	9.9	8.8	-156.84	57.8	-35.5	234.1	215.5	18.57	12.608		
4,100.0	4,079.8	4,082.7	4,078.8	10.1	9.0	-156.84	57.8	-35.5	234.1	215.1	18.98	12.333		
4,200.0	4,179.8	4,182.7	4,178.8	10.3	9.2	-156.84	57.8	-35.5	234.1	214.7	19.40	12.068		
4,300.0	4,279.8	4,282.7	4,278.8	10.5	9.5	-156.84	57.8	-35.5	234.1	214.3	19.81	11.814		
4,400.0	4,379.8	4,382.7	4,378.8	10.7	9.7	-156.84	57.8	-35.5	234.1	213.8	20.23	11.569		
4,500.0	4,479.8	4,482.7	4,478.8	10.9	9.9	-156.84	57.8	-35.5	234.1	213.4	20.65	11.334		
4,600.0	4,579.8	4,582.7	4,578.8	11.1	10.1	-156.84	57.8	-35.5	234.1	213.0	21.07	11.108		
4,700.0	4,679.8	4,682.7	4,678.8	11.3	10.3	-156.84	57.8	-35.5	234.1	212.6	21.50	10.890		
4,800.0	4,779.8	4,782.7	4,778.8	11.5	10.6	-156.84	57.8	-35.5	234.1	212.2	21.92	10.679		
4,900.0	4,879.8	4,882.7	4,878.8	11.7	10.8	-156.84	57.8	-35.5	234.1	211.7	22.34	10.477		
5,000.0	4,979.8	4,982.7	4,978.8	11.9	11.0	-156.84	57.8	-35.5	234.1	211.3	22.77	10.281		

COMPASS 2003.21 Build 46

Company:	Synergy Resources	Local Co-ordinate Reference:	Well SRC Kelly Farms A-4-3CHZ
Project:	SEC.4-T5N-R66W	TVD Reference:	WELL @ 4765.5ft (Ensign Rig #131 - RKB - 13.5')
Reference Site:	SRC Kelly Farms Pad Sec.4-T5N-R66W	MD Reference:	WELL @ 4765.5ft (Ensign Rig #131 - RKB - 13.5')
Site Error:	0.0ft	North Reference:	True
Reference Well:	SRC Kelly Farms A-4-3CHZ	Survey Calculation Method:	Minimum Curvature
Well Error:	0.0ft	Output errors are at	2.00 sigma
Reference Wellbore	Wellbore #1	Database:	Landmark
Reference Design:	Plan #2 (4-21-14)	Offset TVD Reference:	Offset Datum

Offset Design		SRC Kelly Farms Pad Sec.4-T5N-R66W - SRC Kelly Farms 22-4-3NHZ - Wellbore #1 - Plan #2 (4-21-1										Offset Site Error:		0.0 ft
Survey Program: 0-MWD												Offset Well Error:		0.0 ft
Reference		Offset		Semi Major Axis			Distance							Warning
Measured Depth (ft)	Vertical Depth (ft)	Measured Depth (ft)	Vertical Depth (ft)	Reference (ft)	Offset (ft)	Highside Toolface (°)	Offset Wellbore Centre +N/-S (ft)	+E/-W (ft)	Between Centres (ft)	Between Ellipses (ft)	Minimum Separation (ft)	Separation Factor		
5,100.0	5,079.8	5,082.7	5,078.8	12.1	11.2	-156.84	57.8	-35.5	234.1	210.9	23.19	10.092		
5,200.0	5,179.8	5,182.7	5,178.8	12.3	11.4	-156.84	57.8	-35.5	234.1	210.5	23.62	9.910		
5,300.0	5,279.8	5,282.7	5,278.8	12.5	11.7	-156.84	57.8	-35.5	234.1	210.0	24.05	9.734		
5,400.0	5,379.8	5,382.7	5,378.8	12.7	11.9	-156.84	57.8	-35.5	234.1	209.6	24.48	9.563		
5,500.0	5,479.8	5,482.7	5,478.8	12.9	12.1	-156.84	57.8	-35.5	234.1	209.2	24.91	9.399		
5,600.0	5,579.8	5,582.7	5,578.8	13.1	12.3	-156.84	57.8	-35.5	234.1	208.7	25.34	9.239		
5,700.0	5,679.8	5,682.7	5,678.8	13.3	12.6	-156.84	57.8	-35.5	234.1	208.3	25.77	9.085		
5,800.0	5,779.8	5,782.7	5,778.8	13.5	12.8	-156.84	57.8	-35.5	234.1	207.9	26.20	8.936		
5,900.0	5,879.8	5,882.7	5,878.8	13.7	13.0	-156.84	57.8	-35.5	234.1	207.5	26.63	8.791		
6,000.0	5,979.8	5,982.7	5,978.8	13.9	13.2	-156.84	57.8	-35.5	234.1	207.0	27.06	8.650		
6,100.0	6,079.8	6,082.7	6,078.8	14.1	13.5	-156.84	57.8	-35.5	234.1	206.6	27.49	8.514		
6,200.0	6,179.8	6,182.7	6,178.8	14.3	13.7	-156.84	57.8	-35.5	234.1	206.2	27.93	8.382		
6,300.0	6,279.8	6,284.9	6,281.0	14.5	13.9	-156.90	57.8	-35.3	234.0	205.6	28.36	8.250		
6,400.0	6,379.8	6,396.6	6,392.1	14.8	14.1	-159.33	57.7	-24.7	230.5	201.7	28.81	8.001		
6,500.0	6,479.8	6,503.3	6,495.9	15.0	14.3	-165.29	57.5	-0.1	223.4	194.2	29.25	7.637		
6,600.0	6,579.7	6,603.2	6,589.1	15.2	14.5	96.62	57.3	35.5	217.4	188.3	29.04	7.486		
6,677.1	6,655.9	6,677.6	6,655.2	15.3	14.7	90.51	57.0	69.5	216.0	186.5	29.45	7.334		
6,700.0	6,678.2	6,699.3	6,673.9	15.4	14.8	88.73	56.9	80.6	216.1	186.5	29.58	7.306		
6,800.0	6,773.4	6,792.3	6,750.2	15.6	15.2	81.26	56.6	133.7	219.1	188.9	30.23	7.248		
6,900.0	6,863.4	6,882.8	6,817.9	15.9	15.7	74.54	56.1	193.6	225.4	194.5	30.93	7.287		
7,000.0	6,946.6	6,971.2	6,877.0	16.3	16.4	68.71	55.7	259.3	233.9	202.2	31.63	7.394		
7,100.0	7,021.2	7,057.9	6,927.5	16.9	17.2	63.85	55.2	329.7	243.3	211.0	32.30	7.532		
7,200.0	7,085.9	7,143.1	6,969.3	17.7	18.3	59.91	54.6	403.9	252.8	219.8	33.04	7.653		
7,300.0	7,139.3	7,227.2	7,002.5	18.8	19.6	56.83	54.1	481.2	261.6	227.7	33.93	7.710		
7,400.0	7,180.4	7,310.5	7,027.1	20.2	21.0	54.53	53.5	560.7	269.1	234.0	35.11	7.665		
7,500.0	7,208.5	7,393.1	7,043.0	21.9	22.6	52.94	52.9	641.8	274.9	238.2	36.67	7.496		
7,600.0	7,223.0	7,475.3	7,050.4	23.8	24.3	52.01	52.3	723.6	278.7	240.0	38.70	7.200		
7,700.0	7,225.0	7,570.1	7,051.0	25.8	26.3	51.79	52.0	818.3	279.7	238.0	41.64	6.716		
7,800.0	7,225.0	7,670.1	7,051.0	28.0	28.6	51.79	51.9	918.3	279.7	234.5	45.16	6.193		
7,900.0	7,225.0	7,770.1	7,051.0	30.3	30.9	51.79	51.7	1,018.3	279.7	230.9	48.84	5.726		
8,000.0	7,225.0	7,870.1	7,051.0	32.6	33.4	51.79	51.6	1,118.3	279.7	227.0	52.65	5.312		
8,100.0	7,225.0	7,970.1	7,051.0	35.1	35.8	51.79	51.5	1,218.3	279.7	223.1	56.56	4.945		
8,200.0	7,225.0	8,070.1	7,051.0	37.5	38.4	51.79	51.3	1,318.3	279.7	219.2	60.55	4.619		
8,300.0	7,225.0	8,170.1	7,051.0	40.1	40.9	51.79	51.2	1,418.3	279.7	215.1	64.61	4.329		
8,400.0	7,225.0	8,270.1	7,051.0	42.6	43.5	51.80	51.1	1,518.3	279.7	211.0	68.73	4.070		
8,500.0	7,225.0	8,370.1	7,051.0	45.2	46.1	51.80	51.0	1,618.3	279.7	206.8	72.89	3.838		
8,600.0	7,225.0	8,470.1	7,051.0	47.8	48.8	51.80	50.8	1,718.3	279.7	202.6	77.09	3.629		
8,700.0	7,225.0	8,570.1	7,051.0	50.5	51.4	51.80	50.7	1,818.3	279.7	198.4	81.32	3.440		
8,800.0	7,225.0	8,670.1	7,051.0	53.1	54.1	51.80	50.6	1,918.3	279.7	194.2	85.58	3.269		
8,900.0	7,225.0	8,770.1	7,051.0	55.8	56.8	51.80	50.4	2,018.3	279.8	189.9	89.86	3.113		
9,000.0	7,225.0	8,870.1	7,051.0	58.5	59.5	51.80	50.3	2,118.3	279.8	185.6	94.17	2.971		
9,100.0	7,225.0	8,970.1	7,051.0	61.2	62.2	51.80	50.2	2,218.3	279.8	181.3	98.49	2.841		
9,200.0	7,225.0	9,070.1	7,051.0	63.9	64.9	51.80	50.0	2,318.3	279.8	176.9	102.82	2.721		
9,300.0	7,225.0	9,170.1	7,051.0	66.6	67.6	51.80	49.9	2,418.3	279.8	172.6	107.17	2.610		
9,400.0	7,225.0	9,270.1	7,051.0	69.3	70.4	51.81	49.8	2,518.3	279.8	168.2	111.54	2.508		
9,500.0	7,225.0	9,370.1	7,051.0	72.0	73.1	51.81	49.7	2,618.3	279.8	163.9	115.91	2.414		
9,600.0	7,225.0	9,470.1	7,051.0	74.8	75.8	51.81	49.5	2,718.3	279.8	159.5	120.29	2.326		
9,700.0	7,225.0	9,570.1	7,051.0	77.5	78.6	51.81	49.4	2,818.3	279.8	155.1	124.69	2.244		
9,800.0	7,225.0	9,670.1	7,051.0	80.3	81.3	51.81	49.3	2,918.3	279.8	150.7	129.08	2.168		
9,900.0	7,225.0	9,770.1	7,051.0	83.0	84.1	51.81	49.1	3,018.3	279.8	146.3	133.49	2.096		

CC - Min centre to center distance or convergent point, SF - min separation factor, ES - min ellipse separation

Company:	Synergy Resources	Local Co-ordinate Reference:	Well SRC Kelly Farms A-4-3CHZ
Project:	SEC.4-T5N-R66W	TVD Reference:	WELL @ 4765.5ft (Ensign Rig #131 - RKB - 13.5')
Reference Site:	SRC Kelly Farms Pad Sec.4-T5N-R66W	MD Reference:	WELL @ 4765.5ft (Ensign Rig #131 - RKB - 13.5')
Site Error:	0.0ft	North Reference:	True
Reference Well:	SRC Kelly Farms A-4-3CHZ	Survey Calculation Method:	Minimum Curvature
Well Error:	0.0ft	Output errors are at	2.00 sigma
Reference Wellbore	Wellbore #1	Database:	Landmark
Reference Design:	Plan #2 (4-21-14)	Offset TVD Reference:	Offset Datum

Offset Design		SRC Kelly Farms Pad Sec.4-T5N-R66W - SRC Kelly Farms 22-4-3NHZ - Wellbore #1 - Plan #2 (4-21-1										Offset Site Error:		0.0 ft
Survey Program: 0-MWD												Offset Well Error:		0.0 ft
Reference		Offset		Semi Major Axis			Distance							Warning
Measured Depth (ft)	Vertical Depth (ft)	Measured Depth (ft)	Vertical Depth (ft)	Reference (ft)	Offset (ft)	Highside Toolface (°)	Offset Wellbore Centre +N/-S (ft)	+E/-W (ft)	Between Centres (ft)	Between Ellipses (ft)	Minimum Separation (ft)	Separation Factor		
10,000.0	7,225.0	9,870.1	7,051.0	85.7	86.9	51.81	49.0	3,118.3	279.8	141.9	137.90	2.029		
10,100.0	7,225.0	9,970.1	7,051.0	88.5	89.6	51.81	48.9	3,218.3	279.8	137.5	142.32	1.966		
10,200.0	7,225.0	10,070.1	7,051.0	91.3	92.4	51.81	48.8	3,318.3	279.8	133.1	146.75	1.907		
10,300.0	7,225.0	10,170.1	7,051.0	94.0	95.1	51.81	48.6	3,418.3	279.8	128.7	151.17	1.851		
10,400.0	7,225.0	10,270.1	7,051.0	96.8	97.9	51.81	48.5	3,518.3	279.8	124.2	155.61	1.798		
10,500.0	7,225.0	10,370.1	7,051.0	99.6	100.7	51.82	48.4	3,618.3	279.8	119.8	160.04	1.749		
10,600.0	7,225.0	10,470.1	7,051.0	102.3	103.5	51.82	48.2	3,718.3	279.9	115.4	164.48	1.701		
10,700.0	7,225.0	10,570.1	7,051.0	105.1	106.2	51.82	48.1	3,818.3	279.9	110.9	168.93	1.657		
10,800.0	7,225.0	10,670.1	7,051.0	107.9	109.0	51.82	48.0	3,918.3	279.9	106.5	173.37	1.614		
10,900.0	7,225.0	10,770.1	7,051.0	110.6	111.8	51.82	47.8	4,018.3	279.9	102.0	177.82	1.574		
11,000.0	7,225.0	10,870.1	7,051.0	113.4	114.6	51.82	47.7	4,118.3	279.9	97.6	182.28	1.535		
11,100.0	7,225.0	10,970.1	7,051.0	116.2	117.3	51.82	47.6	4,218.3	279.9	93.2	186.73	1.499	Level 3	
11,200.0	7,225.0	11,070.1	7,051.0	119.0	120.1	51.82	47.5	4,318.3	279.9	88.7	191.19	1.464	Level 3	
11,300.0	7,225.0	11,170.1	7,051.0	121.8	122.9	51.82	47.3	4,418.3	279.9	84.2	195.65	1.431	Level 3	
11,400.0	7,225.0	11,270.1	7,051.0	124.5	125.7	51.82	47.2	4,518.3	279.9	79.8	200.11	1.399	Level 3	
11,500.0	7,225.0	11,370.1	7,051.0	127.3	128.5	51.83	47.1	4,618.3	279.9	75.3	204.58	1.368	Level 3	
11,600.0	7,225.0	11,470.1	7,051.0	130.1	131.3	51.83	46.9	4,718.3	279.9	70.9	209.04	1.339	Level 3	
11,700.0	7,225.0	11,570.1	7,051.0	132.9	134.1	51.83	46.8	4,818.3	279.9	66.4	213.51	1.311	Level 3	
11,800.0	7,225.0	11,670.1	7,051.0	135.7	136.8	51.83	46.7	4,918.3	279.9	61.9	217.98	1.284	Level 3	
11,900.0	7,225.0	11,770.1	7,051.0	138.5	139.6	51.83	46.6	5,018.3	279.9	57.5	222.45	1.258	Level 3	
11,954.6	7,225.0	11,824.7	7,051.0	140.0	141.2	51.83	46.5	5,072.9	279.9	55.0	224.89	1.245	Level 2	
12,000.0	7,225.0	11,853.8	7,051.0	141.3	142.0	51.83	46.4	5,102.1	280.4	53.8	226.56	1.238	Level 2, SF	
12,005.7	7,225.0	11,853.8	7,051.0	141.4	142.0	51.83	46.4	5,102.1	280.8	54.1	226.68	1.239	Level 2	

Company:	Synergy Resources	Local Co-ordinate Reference:	Well SRC Kelly Farms A-4-3CHZ
Project:	SEC.4-T5N-R66W	TVD Reference:	WELL @ 4765.5ft (Ensign Rig #131 - RKB - 13.5')
Reference Site:	SRC Kelly Farms Pad Sec.4-T5N-R66W	MD Reference:	WELL @ 4765.5ft (Ensign Rig #131 - RKB - 13.5')
Site Error:	0.0ft	North Reference:	True
Reference Well:	SRC Kelly Farms A-4-3CHZ	Survey Calculation Method:	Minimum Curvature
Well Error:	0.0ft	Output errors are at	2.00 sigma
Reference Wellbore	Wellbore #1	Database:	Landmark
Reference Design:	Plan #2 (4-21-14)	Offset TVD Reference:	Offset Datum

Offset Design		SRC Kelly Farms Pad Sec.4-T5N-R66W - SRC Kelly Farms A-4-3NHZ - Wellbore #1 - Plan #2 (4-21-14)										Offset Site Error:		0.0 ft
Survey Program: 0-MWD												Offset Well Error:		0.0 ft
Reference		Offset		Semi Major Axis			Distance							Warning
Measured Depth (ft)	Vertical Depth (ft)	Measured Depth (ft)	Vertical Depth (ft)	Reference (ft)	Offset (ft)	Highside Toolface (°)	Offset Wellbore Centre +N/-S (ft)	+E/-W (ft)	Between Centres (ft)	Between Ellipses (ft)	Minimum Separation (ft)	Separation Factor		
0.0	0.0	1.0	1.0	0.0	0.0	-101.55	-8.0	-39.3	40.1	40.1	0.00	N/A		
100.0	100.0	101.0	101.0	0.1	0.1	-101.55	-8.0	-39.3	40.1	39.8	0.23	176.483		
200.0	200.0	201.0	201.0	0.3	0.3	-101.55	-8.0	-39.3	40.1	39.4	0.68	59.218		
300.0	300.0	301.3	301.3	0.6	0.6	-99.03	-6.2	-39.2	39.7	38.6	1.13	35.233		
400.0	400.0	401.3	401.1	0.8	0.8	-91.39	-1.0	-39.1	39.1	37.5	1.58	24.704		
424.4	424.4	425.6	425.4	0.8	0.9	-88.74	0.9	-39.1	39.1	37.4	1.70	22.999	CC, ES	
500.0	500.0	500.8	500.3	1.0	1.0	-78.72	7.8	-38.9	39.7	37.6	2.06	19.292		
600.0	600.0	600.3	599.1	1.2	1.3	-64.69	18.3	-38.7	42.8	40.3	2.55	16.803		
700.0	700.0	699.7	698.0	1.5	1.6	-53.14	28.8	-38.4	48.1	45.1	3.04	15.846		
800.0	800.0	799.1	796.9	1.7	1.9	-44.16	39.4	-38.2	55.0	51.5	3.52	15.635		
900.0	900.0	898.7	895.9	1.9	2.2	-50.08	49.9	-38.0	61.8	57.8	3.95	15.639		
1,000.0	999.8	998.6	995.2	2.1	2.4	-47.64	60.5	-37.7	66.7	62.2	4.42	15.084		
1,100.0	1,099.5	1,098.5	1,094.6	2.4	2.7	-47.62	71.1	-37.5	69.2	64.3	4.90	14.124		
1,200.0	1,198.7	1,198.5	1,194.0	2.6	3.0	-49.77	81.7	-37.3	69.5	64.1	5.41	12.847		
1,300.0	1,297.5	1,298.4	1,293.3	2.9	3.3	-53.97	92.2	-37.0	68.0	62.0	5.96	11.402		
1,400.0	1,396.3	1,398.2	1,392.6	3.2	3.6	-58.69	102.8	-36.8	66.6	60.0	6.55	10.163		
1,500.0	1,495.0	1,498.0	1,491.9	3.5	3.9	-63.58	113.4	-36.6	65.7	58.5	7.17	9.156		
1,600.0	1,593.8	1,597.9	1,591.1	3.8	4.2	-68.57	124.0	-36.4	65.2	57.4	7.81	8.347		
1,636.8	1,630.1	1,634.6	1,627.7	3.9	4.3	-70.42	127.9	-36.3	65.2	57.1	8.06	8.092		
1,700.0	1,692.5	1,697.7	1,690.4	4.1	4.5	-73.59	134.5	-36.1	65.3	56.8	8.48	7.704		
1,800.0	1,791.3	1,797.5	1,789.7	4.5	4.8	-78.56	145.1	-35.9	65.9	56.7	9.15	7.202		
1,900.0	1,890.0	1,897.4	1,889.0	4.8	5.1	-83.42	155.7	-35.7	66.9	57.1	9.82	6.816		
2,000.0	1,988.8	1,997.2	1,988.2	5.1	5.4	-88.08	166.3	-35.4	68.4	57.9	10.48	6.527		
2,100.0	2,087.5	2,097.0	2,087.5	5.5	5.7	-92.52	176.8	-35.2	70.4	59.2	11.14	6.318		
2,200.0	2,186.3	2,196.9	2,186.8	5.8	6.0	-96.70	187.4	-35.0	72.7	61.0	11.78	6.174		
2,300.0	2,285.0	2,296.7	2,286.0	6.2	6.3	-100.60	198.0	-34.7	75.4	63.0	12.41	6.081		
2,400.0	2,383.8	2,396.5	2,385.3	6.5	6.5	-104.21	208.6	-34.5	78.5	65.5	13.02	6.029		
2,500.0	2,482.5	2,496.4	2,484.6	6.9	6.8	-107.54	219.2	-34.3	81.8	68.2	13.61	6.010		
2,600.0	2,581.3	2,596.2	2,583.9	7.2	7.1	-110.50	229.7	-34.0	85.3	71.1	14.18	6.015		
2,700.0	2,680.4	2,696.2	2,683.3	7.5	7.4	-111.63	240.3	-33.8	88.0	73.3	14.71	5.984		
2,800.0	2,780.0	2,796.1	2,782.7	7.7	7.7	-110.60	250.9	-33.6	89.4	74.2	15.25	5.864		
2,900.0	2,879.8	2,896.0	2,882.0	7.9	8.0	-107.49	261.5	-33.3	89.8	74.0	15.80	5.681		
3,000.0	2,979.8	2,995.7	2,981.1	8.1	8.3	-102.26	272.0	-33.1	89.6	73.2	16.34	5.482		
3,019.6	2,999.4	3,015.2	3,000.5	8.1	8.4	-101.02	274.1	-33.0	89.6	73.1	16.44	5.448		
3,100.0	3,079.8	3,095.1	3,080.0	8.3	8.6	-83.88	282.6	-32.9	89.9	75.9	14.00	6.422		
3,200.0	3,179.8	3,194.6	3,178.8	8.4	8.9	-77.29	293.1	-32.6	91.4	76.9	14.48	6.310		
3,300.0	3,279.8	3,294.0	3,277.7	8.6	9.2	-70.98	303.6	-32.4	94.1	79.0	15.05	6.251		
3,400.0	3,379.8	3,393.4	3,376.6	8.8	9.5	-65.09	314.2	-32.2	97.9	82.2	15.68	6.242		
3,500.0	3,479.8	3,492.9	3,475.5	9.0	9.8	-59.68	324.7	-31.9	102.6	86.2	16.34	6.279		
3,600.0	3,579.8	3,592.3	3,574.4	9.1	10.1	-54.79	335.2	-31.7	108.1	91.1	17.01	6.357		
3,700.0	3,679.8	3,691.7	3,673.2	9.3	10.4	-50.40	345.8	-31.5	114.4	96.7	17.69	6.469		
3,800.0	3,779.8	3,791.2	3,772.1	9.5	10.7	-46.48	356.3	-31.2	121.3	102.9	18.36	6.609		
3,900.0	3,879.8	3,890.6	3,871.0	9.7	10.9	-43.00	366.8	-31.0	128.7	109.7	19.01	6.770		
4,000.0	3,979.8	3,990.1	3,969.9	9.9	11.2	-39.90	377.4	-30.8	136.5	116.9	19.65	6.947		
4,100.0	4,079.8	4,089.5	4,068.7	10.1	11.5	-37.14	387.9	-30.5	144.7	124.4	20.27	7.136		
4,200.0	4,179.8	4,188.9	4,167.6	10.3	11.8	-34.69	398.4	-30.3	153.1	132.2	20.88	7.334		
4,300.0	4,279.8	4,288.4	4,266.5	10.5	12.1	-32.49	409.0	-30.1	161.8	140.4	21.48	7.536		
4,400.0	4,379.8	4,387.8	4,365.4	10.7	12.4	-30.51	419.5	-29.9	170.8	148.7	22.06	7.741		
4,500.0	4,479.8	4,487.2	4,464.2	10.9	12.7	-28.74	430.0	-29.6	179.9	157.2	22.63	7.947		
4,600.0	4,579.8	4,586.7	4,563.1	11.1	13.0	-27.14	440.6	-29.4	189.1	165.9	23.20	8.153		
4,700.0	4,679.8	4,686.1	4,662.0	11.3	13.3	-25.68	451.1	-29.2	198.5	174.8	23.76	8.357		

CC - Min centre to center distance or convergent point, SF - min separation factor, ES - min ellipse separation

Company:	Synergy Resources	Local Co-ordinate Reference:	Well SRC Kelly Farms A-4-3CHZ
Project:	SEC.4-T5N-R66W	TVD Reference:	WELL @ 4765.5ft (Ensign Rig #131 - RKB - 13.5')
Reference Site:	SRC Kelly Farms Pad Sec.4-T5N-R66W	MD Reference:	WELL @ 4765.5ft (Ensign Rig #131 - RKB - 13.5')
Site Error:	0.0ft	North Reference:	True
Reference Well:	SRC Kelly Farms A-4-3CHZ	Survey Calculation Method:	Minimum Curvature
Well Error:	0.0ft	Output errors are at	2.00 sigma
Reference Wellbore	Wellbore #1	Database:	Landmark
Reference Design:	Plan #2 (4-21-14)	Offset TVD Reference:	Offset Datum

Offset Design		SRC Kelly Farms Pad Sec.4-T5N-R66W - SRC Kelly Farms A-4-3NHZ - Wellbore #1 - Plan #2 (4-21-14)										Offset Site Error:		0.0 ft		
Survey Program: 0-MWD														Offset Well Error:		0.0 ft
Reference		Offset		Semi Major Axis			Distance							Warning		
Measured Depth (ft)	Vertical Depth (ft)	Measured Depth (ft)	Vertical Depth (ft)	Reference (ft)	Offset (ft)	Highside Toolface (°)	Offset Wellbore Centre		Between Centres (ft)	Between Ellipses (ft)	Minimum Separation (ft)	Separation Factor				
							+N/-S (ft)	+E/-W (ft)								
4,800.0	4,779.8	4,785.6	4,760.9	11.5	13.6	-24.36	461.6	-28.9	208.0	183.7	24.31	8.559				
4,900.0	4,879.8	4,885.0	4,859.8	11.7	13.9	-23.16	472.2	-28.7	217.7	192.8	24.85	8.758				
5,000.0	4,979.8	4,989.3	4,963.6	11.9	14.2	-22.08	482.4	-28.5	226.7	201.3	25.38	8.932				
5,100.0	5,079.8	5,097.1	5,071.1	12.1	14.4	-21.41	489.3	-28.3	232.5	206.7	25.83	9.004				
5,200.0	5,179.8	5,205.2	5,179.2	12.3	14.6	-21.14	492.1	-28.3	235.0	208.7	26.22	8.961				
5,300.0	5,279.8	5,306.8	5,280.8	12.5	14.7	-21.14	492.2	-28.3	235.0	208.4	26.59	8.839				
5,400.0	5,379.8	5,406.8	5,380.8	12.7	14.9	-21.14	492.2	-28.3	235.0	208.1	26.98	8.712				
5,500.0	5,479.8	5,506.8	5,480.8	12.9	15.1	-21.14	492.2	-28.3	235.0	207.7	27.36	8.589				
5,600.0	5,579.8	5,606.8	5,580.8	13.1	15.2	-21.14	492.2	-28.3	235.0	207.3	27.75	8.468				
5,700.0	5,679.8	5,706.8	5,680.8	13.3	15.4	-21.14	492.2	-28.3	235.0	206.9	28.15	8.350				
5,800.0	5,779.8	5,806.8	5,780.8	13.5	15.6	-21.14	492.2	-28.3	235.0	206.5	28.54	8.235				
5,900.0	5,879.8	5,906.8	5,880.8	13.7	15.8	-21.14	492.2	-28.3	235.0	206.1	28.93	8.123				
6,000.0	5,979.8	6,006.8	5,980.8	13.9	15.9	-21.14	492.2	-28.3	235.0	205.7	29.33	8.013				
6,100.0	6,079.8	6,106.8	6,080.8	14.1	16.1	-21.14	492.2	-28.3	235.0	205.3	29.73	7.906				
6,200.0	6,179.8	6,206.8	6,180.8	14.3	16.3	-21.14	492.2	-28.3	235.0	204.9	30.13	7.801				
6,300.0	6,279.8	6,311.8	6,285.8	14.5	16.5	-20.80	492.2	-26.8	234.6	204.0	30.54	7.680				
6,400.0	6,379.8	6,421.4	6,394.4	14.8	16.7	-17.56	492.2	-12.9	230.3	199.3	31.02	7.424				
6,500.0	6,479.8	6,525.6	6,495.0	15.0	16.9	-11.06	492.2	13.7	223.8	192.2	31.57	7.089				
6,600.0	6,579.7	6,623.0	6,585.4	15.2	17.1	-92.85	492.2	49.9	219.5	189.9	29.59	7.418				
6,633.3	6,612.7	6,654.6	6,613.8	15.2	17.1	-90.14	492.2	63.9	219.2	189.5	29.72	7.377				
6,700.0	6,678.2	6,717.0	6,668.0	15.4	17.3	-84.86	492.2	94.7	220.3	190.2	30.02	7.337				
6,800.0	6,773.4	6,808.4	6,742.8	15.6	17.6	-77.53	492.2	147.2	225.1	194.6	30.54	7.371				
6,900.0	6,863.4	6,897.7	6,809.8	15.9	17.9	-71.11	492.2	206.1	232.8	201.8	31.06	7.495				
7,000.0	6,946.6	6,985.1	6,868.8	16.3	18.4	-65.71	492.2	270.5	242.0	210.4	31.56	7.668				
7,100.0	7,021.2	7,071.1	6,919.8	16.9	19.1	-61.33	492.2	339.7	251.5	219.4	32.10	7.835				
7,200.0	7,085.9	7,156.0	6,962.8	17.7	20.0	-57.89	492.2	412.9	260.4	227.6	32.82	7.934				
7,300.0	7,139.3	7,240.0	6,997.6	18.8	21.1	-55.32	492.2	489.2	268.1	234.2	33.92	7.902				
7,400.0	7,180.4	7,323.3	7,024.3	20.2	22.5	-53.54	492.2	568.2	274.0	238.4	35.56	7.704				
7,500.0	7,208.5	7,406.2	7,042.7	21.9	24.0	-52.48	492.2	649.0	277.7	239.9	37.83	7.342				
7,600.0	7,223.0	7,489.0	7,052.9	23.8	25.6	-52.10	492.2	731.1	279.2	238.5	40.79	6.846				
7,700.0	7,225.0	7,576.8	7,055.0	25.8	27.4	-52.20	492.2	818.9	279.0	234.8	44.18	6.315				
7,800.0	7,225.0	7,676.8	7,055.0	28.0	29.6	-52.20	492.1	918.9	279.0	231.3	47.71	5.847				
7,900.0	7,225.0	7,776.8	7,055.0	30.3	31.9	-52.20	491.9	1,018.9	279.0	227.6	51.39	5.428				
8,000.0	7,225.0	7,876.8	7,055.0	32.6	34.3	-52.20	491.8	1,118.9	279.0	223.8	55.20	5.054				
8,100.0	7,225.0	7,976.8	7,055.0	35.1	36.7	-52.19	491.7	1,218.9	279.0	219.8	59.11	4.719				
8,200.0	7,225.0	8,076.8	7,055.0	37.5	39.2	-52.19	491.5	1,318.9	279.0	215.8	63.11	4.420				
8,300.0	7,225.0	8,176.8	7,055.0	40.1	41.7	-52.19	491.4	1,418.9	278.9	211.8	67.17	4.153				
8,400.0	7,225.0	8,276.8	7,055.0	42.6	44.3	-52.19	491.3	1,518.9	278.9	207.6	71.30	3.912				
8,500.0	7,225.0	8,376.8	7,055.0	45.2	46.9	-52.19	491.1	1,618.9	278.9	203.5	75.46	3.696				
8,600.0	7,225.0	8,476.8	7,055.0	47.8	49.5	-52.19	491.0	1,718.9	278.9	199.3	79.67	3.501				
8,700.0	7,225.0	8,576.8	7,055.0	50.5	52.1	-52.19	490.9	1,818.9	278.9	195.0	83.91	3.324				
8,800.0	7,225.0	8,676.8	7,055.0	53.1	54.8	-52.19	490.8	1,918.9	278.9	190.7	88.19	3.163				
8,900.0	7,225.0	8,776.8	7,055.0	55.8	57.4	-52.19	490.6	2,018.9	278.9	186.4	92.48	3.016				
9,000.0	7,225.0	8,876.8	7,055.0	58.5	60.1	-52.18	490.5	2,118.9	278.9	182.1	96.80	2.881				
9,100.0	7,225.0	8,976.8	7,055.0	61.2	62.8	-52.18	490.4	2,218.9	278.9	177.8	101.14	2.758				
9,200.0	7,225.0	9,076.8	7,055.0	63.9	65.5	-52.18	490.2	2,318.9	278.9	173.4	105.49	2.644				
9,300.0	7,225.0	9,176.8	7,055.0	66.6	68.2	-52.18	490.1	2,418.9	278.9	169.0	109.86	2.539				
9,400.0	7,225.0	9,276.8	7,055.0	69.3	70.9	-52.18	490.0	2,518.9	278.9	164.6	114.24	2.441				
9,500.0	7,225.0	9,376.8	7,055.0	72.0	73.7	-52.18	489.8	2,618.9	278.9	160.2	118.63	2.351				
9,600.0	7,225.0	9,476.8	7,055.0	74.8	76.4	-52.18	489.7	2,718.9	278.9	155.8	123.03	2.267				

CC - Min centre to center distance or convergent point, SF - min separation factor, ES - min ellipse separation

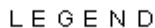
Company:	Synergy Resources	Local Co-ordinate Reference:	Well SRC Kelly Farms A-4-3CHZ
Project:	SEC.4-T5N-R66W	TVD Reference:	WELL @ 4765.5ft (Ensign Rig #131 - RKB - 13.5')
Reference Site:	SRC Kelly Farms Pad Sec.4-T5N-R66W	MD Reference:	WELL @ 4765.5ft (Ensign Rig #131 - RKB - 13.5')
Site Error:	0.0ft	North Reference:	True
Reference Well:	SRC Kelly Farms A-4-3CHZ	Survey Calculation Method:	Minimum Curvature
Well Error:	0.0ft	Output errors are at	2.00 sigma
Reference Wellbore	Wellbore #1	Database:	Landmark
Reference Design:	Plan #2 (4-21-14)	Offset TVD Reference:	Offset Datum







Offset Design		SRC Kelly Farms Pad Sec.4-T5N-R66W - SRC Kelly Farms A-4-3NHZ - Wellbore #1 - Plan #2 (4-21-14)										Offset Site Error:		0.0 ft
Survey Program: 0-MWD												Offset Well Error:		0.0 ft
Reference		Offset		Semi Major Axis			Distance							Warning
Measured Depth (ft)	Vertical Depth (ft)	Measured Depth (ft)	Vertical Depth (ft)	Reference (ft)	Offset (ft)	Highside Toolface (°)	Offset Wellbore Centre +N/-S (ft)	Wellbore Centre +E/-W (ft)	Between Centres (ft)	Between Ellipses (ft)	Minimum Separation (ft)	Separation Factor		
9,700.0	7,225.0	9,576.8	7,055.0	77.5	79.1	-52.18	489.6	2,818.9	278.9	151.4	127.44	2.188		
9,800.0	7,225.0	9,676.8	7,055.0	80.3	81.9	-52.18	489.4	2,918.9	278.9	147.0	131.86	2.115		
9,900.0	7,225.0	9,776.8	7,055.0	83.0	84.6	-52.18	489.3	3,018.9	278.8	142.6	136.29	2.046		
10,000.0	7,225.0	9,876.8	7,055.0	85.7	87.4	-52.17	489.2	3,118.9	278.8	138.1	140.72	1.981		
10,100.0	7,225.0	9,976.8	7,055.0	88.5	90.1	-52.17	489.1	3,218.9	278.8	133.7	145.16	1.921		
10,200.0	7,225.0	10,076.8	7,055.0	91.3	92.9	-52.17	488.9	3,318.9	278.8	129.2	149.60	1.864		
10,300.0	7,225.0	10,176.8	7,055.0	94.0	95.6	-52.17	488.8	3,418.9	278.8	124.8	154.05	1.810		
10,400.0	7,225.0	10,276.8	7,055.0	96.8	98.4	-52.17	488.7	3,518.9	278.8	120.3	158.51	1.759		
10,500.0	7,225.0	10,376.8	7,055.0	99.6	101.2	-52.17	488.5	3,618.9	278.8	115.8	162.97	1.711		
10,600.0	7,225.0	10,476.8	7,055.0	102.3	103.9	-52.17	488.4	3,718.9	278.8	111.4	167.43	1.665		
10,700.0	7,225.0	10,576.8	7,055.0	105.1	106.7	-52.17	488.3	3,818.9	278.8	106.9	171.90	1.622		
10,800.0	7,225.0	10,676.8	7,055.0	107.9	109.5	-52.17	488.1	3,918.9	278.8	102.4	176.36	1.581		
10,900.0	7,225.0	10,776.8	7,055.0	110.6	112.2	-52.17	488.0	4,018.9	278.8	97.9	180.84	1.542		
11,000.0	7,225.0	10,876.8	7,055.0	113.4	115.0	-52.16	487.9	4,118.9	278.8	93.5	185.31	1.504		
11,100.0	7,225.0	10,976.8	7,055.0	116.2	117.8	-52.16	487.8	4,218.9	278.8	89.0	189.79	1.469	Level 3	
11,200.0	7,225.0	11,076.8	7,055.0	119.0	120.6	-52.16	487.6	4,318.9	278.8	84.5	194.27	1.435	Level 3	
11,300.0	7,225.0	11,176.8	7,055.0	121.8	123.4	-52.16	487.5	4,418.9	278.8	80.0	198.75	1.403	Level 3	
11,400.0	7,225.0	11,276.8	7,055.0	124.5	126.1	-52.16	487.4	4,518.9	278.7	75.5	203.23	1.372	Level 3	
11,500.0	7,225.0	11,376.8	7,055.0	127.3	128.9	-52.16	487.2	4,618.9	278.7	71.0	207.72	1.342	Level 3	
11,600.0	7,225.0	11,476.8	7,055.0	130.1	131.7	-52.16	487.1	4,718.9	278.7	66.5	212.21	1.313	Level 3	
11,700.0	7,225.0	11,576.8	7,055.0	132.9	134.5	-52.16	487.0	4,818.9	278.7	62.0	216.70	1.286	Level 3	
11,800.0	7,225.0	11,676.8	7,055.0	135.7	137.3	-52.16	486.8	4,918.9	278.7	57.5	221.19	1.260	Level 3	
11,900.0	7,225.0	11,776.8	7,055.0	138.5	140.1	-52.15	486.7	5,018.9	278.7	53.0	225.68	1.235	Level 2	
12,000.0	7,225.0	11,876.8	7,055.0	141.3	142.8	-52.15	486.6	5,118.9	278.7	48.5	230.18	1.211	Level 2	
12,005.7	7,225.0	11,882.6	7,055.0	141.4	143.0	-52.15	486.6	5,124.6	278.7	48.3	230.43	1.209	Level 2, SF	

Reference Depths are relative to WELL @ 4765.5ft (Ensign Rig #131 - Coordinates are relative to: SRC Kelly Farms A-4-3CHZ
Offset Depths are relative to Offset Datum Coordinate System is US State Plane 1983, Colorado Northern Zone
Central Meridian is -105.500000 ° Grid Convergence at Surface is: 0.46°



Reference Depths are relative to WELL @ 4765.5ft (Ensign Rig #131 - Coordinates are relative to: SRC Kelly Farms A-4-3CHZ
Offset Depths are relative to Offset Datum Coordinate System is US State Plane 1983, Colorado Northern Zone
Central Meridian is -105.500000 ° Grid Convergence at Surface is: 0.46°



dist.), Wellbore #1, Wellbore #1 VD		Northridge 11-4D (Exist.), Wellbore #1, Wellbore #1 VD		SRC Kelly Farms 22-4-3NHZ, Wellbore #1, Plan #2 (4-21-14) VD
st), Northridge 4ND, Northridge 4ND VD		Northridge 22-4D (Exist.), Wellbore #1, Wellbore #1 VD		SRC Kelly Farms A-4-3NHZ, Wellbore #1, Plan #2 (4-21-14) VD
st), Wellbore #1, Wellbore #1 VD		Northridge 4AD (Exist.), Wellbore #1, Wellbore #1 VD		
dist.), Wellbore #1, Wellbore #1 VD		SRC Kelly Farms 22-4-3CHZ, Wellbore #1, Plan #2 (4-21-14) VD		