

Synergy Resources

Well Name: **SRC Kelly Farms A-4-3NHZ**

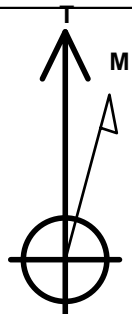
Surface Location: SRC Kelly Farms Pad Sec.4-T5N-R66W
North American Datum 1983, US State Plane 1983, Colorado Northern Zone
Ground Elevation: 4753.0

+N/-S	+E/-W	Northing	Easting	Latitude	Longitude	Slot
0.0	0.0	1400847.55	3199112.81	40.431524	-104.784739	

Ensign Rig #131 - RKB - 13.5' WELL @ 4766.5ft (Ensign Rig #131 - RKB - 13.5')

WELLBORE TARGET DETAILS

Name	TVD	+N/-S	+E/-W	Shape
SHL 2130'FNL & 2330'FWL, Sec. 4	1.0	0.0	0.0	Point
BHL 1636'FNL & 2133'FWL, Sec. 3	7055.0	494.6	5183.6	Point
Landing Pt. 1637'FNL & 2213'FEL, Sec.4	7055.0	500.2	830.4	Point



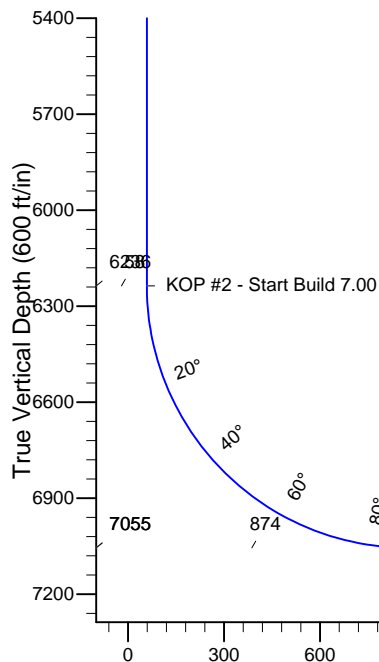
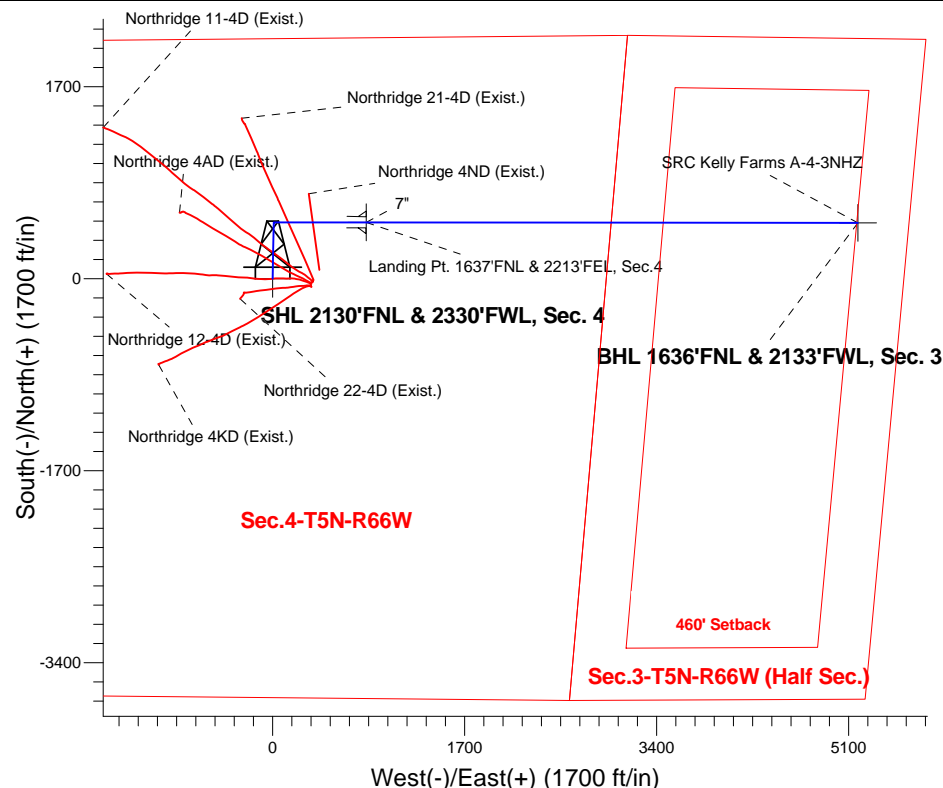
Azimuths to True North
Magnetic North: 8.49°

Magnetic Field
Strength: 52843.8nT
Dip Angle: 66.97°
Date: 4/29/2014
Model: IGRF2010

SRC Kelly Farms Pad Sec.4-T5N-R66W
SRC Kelly Farms A-4-3NHZ
Plan #2 (4-21-14)
16:30, April 29 2014

ANNOTATIONS

TVD	MD	Annotation
200.0	200.0	KOP - Start Build 2.00
4896.5	4921.9	Start Drop -2.00
6236.5	6262.5	KOP #2 - Start Build 7.00
7055.0	7549.1	Start DLS 1.00 TFO 90.00
7055.0	11902.3	TD at 11902.3



SECTION DETAILS

Sec	MD	Inc	Azi	TVD	+N/-S	+E/-W	DLeg	TFace	VSec	Target
1	0.0	0.00	0.00	0.0	0.0	0.0	0.00	0.00	0.0	
2	200.0	0.00	0.00	200.0	0.0	0.0	0.00	0.00	0.0	
3	504.1	6.08	1.26	503.5	16.1	0.4	2.00	1.26	1.9	
4	4921.9	6.08	1.26	4896.5	484.1	10.6	0.00	0.00	56.6	
5	5226.0	0.00	0.00	5200.0	500.2	11.0	2.00	180.00	58.5	
6	6262.5	0.00	0.00	6236.5	500.2	11.0	0.00	0.00	58.5	
7	7548.2	90.00	90.00	7055.0	500.2	829.5	7.00	90.00	873.3	
8	7549.1	90.00	90.00	7055.0	500.2	830.4	0.00	0.00	874.2	Landing Pt. 1637'FNL & 2213'FEL, Sec.4
9	7556.6	90.00	90.07	7055.0	500.2	837.9	1.00	90.00	881.6	
10	11902.3	90.00	90.07	7055.0	494.6	5183.6	0.00	0.00	5207.1	BHL 1636'FNL & 2133'FWL, Sec. 3

ENSIGN
Directional

BHL 1636'FNL & 2133'FWL, Sec. 3

Vertical Section at 84.55° (600 ft/in)



Synergy Resources

SEC.4-T5N-R66W

SRC Kelly Farms Pad Sec.4-T5N-R66W

SRC Kelly Farms A-4-3NHZ

Wellbore #1

Plan: Plan #2 (4-21-14)

Standard Planning Report

29 April, 2014

Database:	Landmark	Local Co-ordinate Reference:	Well SRC Kelly Farms A-4-3NHZ
Company:	Synergy Resources	TVD Reference:	WELL @ 4766.5ft (Ensign Rig #131 - RKB - 13.5')
Project:	SEC.4-T5N-R66W	MD Reference:	WELL @ 4766.5ft (Ensign Rig #131 - RKB - 13.5')
Site:	SRC Kelly Farms Pad Sec.4-T5N-R66W	North Reference:	True
Well:	SRC Kelly Farms A-4-3NHZ	Survey Calculation Method:	Minimum Curvature
Wellbore:	Wellbore #1		
Design:	Plan #2 (4-21-14)		

Project	SEC.4-T5N-R66W, Weld County, Colorado		
Map System:	US State Plane 1983	System Datum:	Mean Sea Level
Geo Datum:	North American Datum 1983		Using Well Reference Point
Map Zone:	Colorado Northern Zone		Using geodetic scale factor

Site						SRC Kelly Farms Pad Sec.4-T5N-R66W											
Site Position:						Northing:			1,400,891.57 ft			Latitude:			40.431645		
From:			Lat/Long			Easting:			3,199,103.54 ft			Longitude:			-104.784771		
Position Uncertainty:			0.0 ft			Slot Radius:			"			Grid Convergence:			0.46 °		

Well	SRC Kelly Farms A-4-3NHZ					
Well Position	+N/-S	-44.1 ft	Northing:	1,400,847.55 ft	Latitude:	40.431524
	+E/-W	8.9 ft	Easting:	3,199,112.81 ft	Longitude:	-104.784739
Position Uncertainty		0.0 ft	Wellhead Elevation:	ft	Ground Level:	4,753.0 ft

Wellbore	Wellbore #1				
Magnetics	Model Name	Sample Date	Declination (°)	Dip Angle (°)	Field Strength (nT)
	IGRF2010	4/29/2014	8.49	66.97	52,844

Design	Plan #2 (4-21-14)			
Audit Notes:				
Version:	Phase:	PROTOTYPE	Tie On Depth:	0.0
Vertical Section:	Depth From (TVD) (ft)	+N/-S (ft)	+E/-W (ft)	Direction (°)
	0.0	0.0	0.0	84.55

Plan Sections										
Measured Depth (ft)	Inclination (°)	Azimuth (°)	Vertical Depth (ft)	+N/-S (ft)	+E/-W (ft)	Dogleg Rate (°/100ft)	Build Rate (°/100ft)	Turn Rate (°/100ft)	TFO (°)	Target
0.0	0.00	0.00	0.0	0.0	0.0	0.00	0.00	0.00	0.00	
200.0	0.00	0.00	200.0	0.0	0.0	0.00	0.00	0.00	0.00	
504.1	6.08	1.26	503.5	16.1	0.4	2.00	2.00	0.00	1.26	
4,921.9	6.08	1.26	4,896.5	484.1	10.6	0.00	0.00	0.00	0.00	
5,226.0	0.00	0.00	5,200.0	500.2	11.0	2.00	-2.00	0.00	180.00	
6,262.5	0.00	0.00	6,236.5	500.2	11.0	0.00	0.00	0.00	0.00	
7,548.2	90.00	90.00	7,055.0	500.2	829.5	7.00	7.00	0.00	90.00	
7,549.1	90.00	90.00	7,055.0	500.2	830.4	0.00	0.00	0.00	0.00	Landing Pt. 1637'Ft
7,556.6	90.00	90.07	7,055.0	500.2	837.9	1.00	0.00	1.00	90.00	
11,902.3	90.00	90.07	7,055.0	494.6	5,183.6	0.00	0.00	0.00	0.00	BHL 1636'FNL & 21

Database:	Landmark	Local Co-ordinate Reference:	Well SRC Kelly Farms A-4-3NHZ
Company:	Synergy Resources	TVD Reference:	WELL @ 4766.5ft (Ensign Rig #131 - RKB - 13.5')
Project:	SEC.4-T5N-R66W	MD Reference:	WELL @ 4766.5ft (Ensign Rig #131 - RKB - 13.5')
Site:	SRC Kelly Farms Pad Sec.4-T5N-R66W	North Reference:	True
Well:	SRC Kelly Farms A-4-3NHZ	Survey Calculation Method:	Minimum Curvature
Wellbore:	Wellbore #1		
Design:	Plan #2 (4-21-14)		

Planned Survey

Measured Depth (ft)	Inclination (°)	Azimuth (°)	Vertical Depth (ft)	+N/-S (ft)	+E/-W (ft)	Vertical Section (ft)	Dogleg Rate (°/100ft)	Build Rate (°/100ft)	Turn Rate (°/100ft)
0.0	0.00	0.00	0.0	0.0	0.0	0.0	0.00	0.00	0.00
1.0	0.00	0.00	1.0	0.0	0.0	0.0	0.00	0.00	0.00
SHL 2130'FNL & 2330'FWL, Sec. 4									
100.0	0.00	0.00	100.0	0.0	0.0	0.0	0.00	0.00	0.00
200.0	0.00	0.00	200.0	0.0	0.0	0.0	0.00	0.00	0.00
KOP - Start Build 2.00									
300.0	2.00	1.26	300.0	1.7	0.0	0.2	2.00	2.00	0.00
400.0	4.00	1.26	399.8	7.0	0.2	0.8	2.00	2.00	0.00
500.0	6.00	1.26	499.5	15.7	0.3	1.8	2.00	2.00	0.00
504.1	6.08	1.26	503.5	16.1	0.4	1.9	2.00	2.00	0.00
600.0	6.08	1.26	598.9	26.3	0.6	3.1	0.00	0.00	0.00
700.0	6.08	1.26	698.3	36.9	0.8	4.3	0.00	0.00	0.00
800.0	6.08	1.26	797.8	47.5	1.0	5.5	0.00	0.00	0.00
900.0	6.08	1.26	897.2	58.1	1.3	6.8	0.00	0.00	0.00
1,000.0	6.08	1.26	996.6	68.7	1.5	8.0	0.00	0.00	0.00
1,100.0	6.08	1.26	1,096.1	79.2	1.7	9.3	0.00	0.00	0.00
1,200.0	6.08	1.26	1,195.5	89.8	2.0	10.5	0.00	0.00	0.00
1,300.0	6.08	1.26	1,294.9	100.4	2.2	11.7	0.00	0.00	0.00
1,400.0	6.08	1.26	1,394.4	111.0	2.4	13.0	0.00	0.00	0.00
1,500.0	6.08	1.26	1,493.8	121.6	2.7	14.2	0.00	0.00	0.00
1,600.0	6.08	1.26	1,593.3	132.2	2.9	15.5	0.00	0.00	0.00
1,700.0	6.08	1.26	1,692.7	142.8	3.1	16.7	0.00	0.00	0.00
1,800.0	6.08	1.26	1,792.1	153.4	3.4	17.9	0.00	0.00	0.00
1,900.0	6.08	1.26	1,891.6	164.0	3.6	19.2	0.00	0.00	0.00
2,000.0	6.08	1.26	1,991.0	174.6	3.8	20.4	0.00	0.00	0.00
2,100.0	6.08	1.26	2,090.4	185.2	4.1	21.6	0.00	0.00	0.00
2,200.0	6.08	1.26	2,189.9	195.8	4.3	22.9	0.00	0.00	0.00
2,300.0	6.08	1.26	2,289.3	206.4	4.5	24.1	0.00	0.00	0.00
2,400.0	6.08	1.26	2,388.8	217.0	4.8	25.4	0.00	0.00	0.00
2,500.0	6.08	1.26	2,488.2	227.6	5.0	26.6	0.00	0.00	0.00
2,600.0	6.08	1.26	2,587.6	238.1	5.2	27.8	0.00	0.00	0.00
2,700.0	6.08	1.26	2,687.1	248.7	5.5	29.1	0.00	0.00	0.00
2,800.0	6.08	1.26	2,786.5	259.3	5.7	30.3	0.00	0.00	0.00
2,900.0	6.08	1.26	2,885.9	269.9	5.9	31.5	0.00	0.00	0.00
3,000.0	6.08	1.26	2,985.4	280.5	6.2	32.8	0.00	0.00	0.00
3,100.0	6.08	1.26	3,084.8	291.1	6.4	34.0	0.00	0.00	0.00
3,200.0	6.08	1.26	3,184.3	301.7	6.6	35.3	0.00	0.00	0.00
3,300.0	6.08	1.26	3,283.7	312.3	6.9	36.5	0.00	0.00	0.00
3,400.0	6.08	1.26	3,383.1	322.9	7.1	37.7	0.00	0.00	0.00
3,500.0	6.08	1.26	3,482.6	333.5	7.3	39.0	0.00	0.00	0.00
3,600.0	6.08	1.26	3,582.0	344.1	7.6	40.2	0.00	0.00	0.00
3,700.0	6.08	1.26	3,681.4	354.7	7.8	41.5	0.00	0.00	0.00
3,800.0	6.08	1.26	3,780.9	365.3	8.0	42.7	0.00	0.00	0.00
3,900.0	6.08	1.26	3,880.3	375.9	8.3	43.9	0.00	0.00	0.00
4,000.0	6.08	1.26	3,979.7	386.5	8.5	45.2	0.00	0.00	0.00
4,100.0	6.08	1.26	4,079.2	397.0	8.7	46.4	0.00	0.00	0.00
4,200.0	6.08	1.26	4,178.6	407.6	9.0	47.6	0.00	0.00	0.00
4,300.0	6.08	1.26	4,278.1	418.2	9.2	48.9	0.00	0.00	0.00
4,400.0	6.08	1.26	4,377.5	428.8	9.4	50.1	0.00	0.00	0.00
4,500.0	6.08	1.26	4,476.9	439.4	9.7	51.4	0.00	0.00	0.00
4,600.0	6.08	1.26	4,576.4	450.0	9.9	52.6	0.00	0.00	0.00
4,700.0	6.08	1.26	4,675.8	460.6	10.1	53.8	0.00	0.00	0.00

Database:	Landmark	Local Co-ordinate Reference:	Well SRC Kelly Farms A-4-3NHZ
Company:	Synergy Resources	TVD Reference:	WELL @ 4766.5ft (Ensign Rig #131 - RKB - 13.5')
Project:	SEC.4-T5N-R66W	MD Reference:	WELL @ 4766.5ft (Ensign Rig #131 - RKB - 13.5')
Site:	SRC Kelly Farms Pad Sec.4-T5N-R66W	North Reference:	True
Well:	SRC Kelly Farms A-4-3NHZ	Survey Calculation Method:	Minimum Curvature
Wellbore:	Wellbore #1		
Design:	Plan #2 (4-21-14)		

Planned Survey									
Measured Depth (ft)	Inclination (°)	Azimuth (°)	Vertical Depth (ft)	+N/-S (ft)	+E/-W (ft)	Vertical Section (ft)	Dogleg Rate (°/100ft)	Build Rate (°/100ft)	Turn Rate (°/100ft)
4,800.0	6.08	1.26	4,775.2	471.2	10.4	55.1	0.00	0.00	0.00
4,900.0	6.08	1.26	4,874.7	481.8	10.6	56.3	0.00	0.00	0.00
4,921.9	6.08	1.26	4,896.5	484.1	10.6	56.6	0.00	0.00	0.00
Start Drop -2.00									
5,000.0	4.52	1.26	4,974.2	491.3	10.8	57.4	2.00	-2.00	0.00
5,100.0	2.52	1.26	5,074.0	497.5	10.9	58.1	2.00	-2.00	0.00
5,200.0	0.52	1.26	5,174.0	500.1	11.0	58.4	2.00	-2.00	0.00
5,226.0	0.00	0.00	5,200.0	500.2	11.0	58.5	2.00	-2.00	0.00
5,300.0	0.00	0.00	5,274.0	500.2	11.0	58.5	0.00	0.00	0.00
5,400.0	0.00	0.00	5,374.0	500.2	11.0	58.5	0.00	0.00	0.00
5,500.0	0.00	0.00	5,474.0	500.2	11.0	58.5	0.00	0.00	0.00
5,600.0	0.00	0.00	5,574.0	500.2	11.0	58.5	0.00	0.00	0.00
5,700.0	0.00	0.00	5,674.0	500.2	11.0	58.5	0.00	0.00	0.00
5,800.0	0.00	0.00	5,774.0	500.2	11.0	58.5	0.00	0.00	0.00
5,900.0	0.00	0.00	5,874.0	500.2	11.0	58.5	0.00	0.00	0.00
6,000.0	0.00	0.00	5,974.0	500.2	11.0	58.5	0.00	0.00	0.00
6,100.0	0.00	0.00	6,074.0	500.2	11.0	58.5	0.00	0.00	0.00
6,200.0	0.00	0.00	6,174.0	500.2	11.0	58.5	0.00	0.00	0.00
6,262.5	0.00	0.00	6,236.5	500.2	11.0	58.5	0.00	0.00	0.00
KOP #2 - Start Build 7.00									
6,300.0	2.63	90.00	6,274.0	500.2	11.9	59.3	7.00	7.00	0.00
6,400.0	9.63	90.00	6,373.3	500.2	22.5	69.9	7.00	7.00	0.00
6,500.0	16.63	90.00	6,470.7	500.2	45.2	92.5	7.00	7.00	0.00
6,600.0	23.63	90.00	6,564.5	500.2	79.6	126.8	7.00	7.00	0.00
6,700.0	30.63	90.00	6,653.5	500.2	125.2	172.1	7.00	7.00	0.00
6,800.0	37.63	90.00	6,736.2	500.2	181.2	227.9	7.00	7.00	0.00
6,900.0	44.63	90.00	6,811.5	500.2	247.0	293.4	7.00	7.00	0.00
7,000.0	51.62	90.00	6,878.2	500.2	321.4	367.4	7.00	7.00	0.00
7,100.0	58.62	90.00	6,935.3	500.2	403.4	449.1	7.00	7.00	0.00
7,200.0	65.62	90.00	6,982.0	500.2	491.7	537.0	7.00	7.00	0.00
7,300.0	72.62	90.00	7,017.7	500.2	585.1	630.0	7.00	7.00	0.00
7,400.0	79.62	90.00	7,041.6	500.2	682.1	726.5	7.00	7.00	0.00
7,500.0	86.62	90.00	7,053.6	500.2	781.3	825.3	7.00	7.00	0.00
7,548.2	90.00	90.00	7,055.0	500.2	829.5	873.3	7.00	7.00	0.00
7,549.1	90.00	90.00	7,055.0	500.2	830.4	874.2	0.00	0.00	0.00
Start DLS 1.00 TFO 90.00 - 7" - Landing Pt. 1637'FNL & 2213'FEL, Sec.4									
7,556.6	90.00	90.07	7,055.0	500.2	837.9	881.6	1.00	0.00	1.00
7,600.0	90.00	90.07	7,055.0	500.2	881.3	924.8	0.00	0.00	0.00
7,700.0	90.00	90.07	7,055.0	500.0	981.3	1,024.4	0.00	0.00	0.00
7,800.0	90.00	90.07	7,055.0	499.9	1,081.3	1,123.9	0.00	0.00	0.00
7,900.0	90.00	90.07	7,055.0	499.8	1,181.3	1,223.4	0.00	0.00	0.00
8,000.0	90.00	90.07	7,055.0	499.7	1,281.3	1,323.0	0.00	0.00	0.00
8,100.0	90.00	90.07	7,055.0	499.5	1,381.3	1,422.5	0.00	0.00	0.00
8,200.0	90.00	90.07	7,055.0	499.4	1,481.3	1,522.0	0.00	0.00	0.00
8,300.0	90.00	90.07	7,055.0	499.3	1,581.3	1,621.6	0.00	0.00	0.00
8,400.0	90.00	90.07	7,055.0	499.1	1,681.3	1,721.1	0.00	0.00	0.00
8,500.0	90.00	90.07	7,055.0	499.0	1,781.3	1,820.6	0.00	0.00	0.00
8,600.0	90.00	90.07	7,055.0	498.9	1,881.3	1,920.2	0.00	0.00	0.00
8,700.0	90.00	90.07	7,055.0	498.7	1,981.3	2,019.7	0.00	0.00	0.00
8,800.0	90.00	90.07	7,055.0	498.6	2,081.3	2,119.2	0.00	0.00	0.00
8,900.0	90.00	90.07	7,055.0	498.5	2,181.3	2,218.8	0.00	0.00	0.00
9,000.0	90.00	90.07	7,055.0	498.3	2,281.3	2,318.3	0.00	0.00	0.00

Plan Annotations					
	Measured Depth (ft)	Vertical Depth (ft)	Local Coordinates		Comment
			+N/-S (ft)	+E/-W (ft)	
	200.0	200.0	0.0	0.0	KOP - Start Build 2.00
	4,921.9	4,896.5	484.1	10.6	Start Drop -2.00
	6,262.5	6,236.5	500.2	11.0	KOP #2 - Start Build 7.00
	7,549.1	7,055.0	500.2	830.4	Start DLS 1.00 TFO 90.00
	11,902.3	7,055.0	494.6	5,183.6	TD at 11902.3



Synergy Resources

SEC.4-T5N-R66W

SRC Kelly Farms Pad Sec.4-T5N-R66W

SRC Kelly Farms A-4-3NHZ

Wellbore #1

Plan #2 (4-21-14)

Anticollision Report

29 April, 2014

Company:	Synergy Resources	Local Co-ordinate Reference:	Well SRC Kelly Farms A-4-3NHZ
Project:	SEC.4-T5N-R66W	TVD Reference:	WELL @ 4766.5ft (Ensign Rig #131 - RKB - 13.5')
Reference Site:	SRC Kelly Farms Pad Sec.4-T5N-R66W	MD Reference:	WELL @ 4766.5ft (Ensign Rig #131 - RKB - 13.5')
Site Error:	0.0ft	North Reference:	True
Reference Well:	SRC Kelly Farms A-4-3NHZ	Survey Calculation Method:	Minimum Curvature
Well Error:	0.0ft	Output errors are at	2.00 sigma
Reference Wellbore	Wellbore #1	Database:	Landmark
Reference Design:	Plan #2 (4-21-14)	Offset TVD Reference:	Offset Datum

Offset Design Northridge Pad Sec.4-T5N-R66W - Northridge 11-4D (Exist.) - Wellbore #1 - Wellbore #1													Offset Site Error: 0.0ft
Survey Program: 147-MWD													Offset Well Error: 0.0ft
Reference		Offset		Semi Major Axis			Distance						Warning
Measured Depth (ft)	Vertical Depth (ft)	Measured Depth (ft)	Vertical Depth (ft)	Reference (ft)	Offset (ft)	Highside Toolface (°)	Offset Wellbore Centre +N/-S (ft)	+E/-W (ft)	Between Centres (ft)	Between Ellipses (ft)	Minimum Separation (ft)	Separation Factor	
300.0	300.0	297.3	297.3	0.6	0.5	93.26	-26.0	356.5	357.7	356.7	1.04	344.226	
400.0	399.8	408.1	407.8	0.8	0.7	93.65	-21.8	351.7	353.4	351.9	1.51	233.587	
500.0	499.5	524.1	523.1	1.0	1.0	94.15	-13.0	342.8	345.6	343.6	2.05	168.875	
600.0	598.9	635.4	633.1	1.3	1.4	94.34	-1.1	329.9	333.9	331.2	2.62	127.226	
700.0	698.3	738.0	733.9	1.6	1.7	94.42	10.7	315.2	319.2	316.1	3.19	99.979	
800.0	797.8	836.1	830.4	1.9	2.1	94.58	21.5	301.6	305.2	301.5	3.74	81.706	
900.0	897.2	945.6	937.6	2.2	2.5	94.28	36.2	284.7	289.3	285.0	4.35	66.557	
1,000.0	996.6	1,058.1	1,047.0	2.5	3.0	94.39	49.6	261.9	268.8	263.8	4.99	53.885	
1,100.0	1,096.1	1,163.2	1,148.0	2.7	3.6	94.35	63.1	236.2	244.0	238.3	5.63	43.358	
1,200.0	1,195.5	1,266.9	1,246.4	3.0	4.2	93.45	79.7	208.1	216.2	209.9	6.31	34.248	
1,300.0	1,294.9	1,364.4	1,337.9	3.3	4.9	91.32	98.4	179.9	186.4	179.4	7.06	26.396	
1,400.0	1,394.4	1,460.9	1,427.2	3.6	5.6	87.07	120.3	151.1	156.0	148.0	7.96	19.606	
1,500.0	1,493.8	1,555.9	1,514.6	3.9	6.3	79.84	144.1	122.0	126.2	117.1	9.05	13.935	
1,600.0	1,593.3	1,651.7	1,601.9	4.2	7.1	67.91	168.3	91.1	97.9	87.4	10.44	9.372	
1,700.0	1,692.7	1,744.4	1,685.8	4.5	7.9	48.02	192.7	60.0	76.0	64.0	11.96	6.354	
1,795.9	1,788.0	1,835.2	1,767.8	4.8	8.7	20.64	215.6	28.7	67.9	55.3	12.65	5.369 CC, ES, SF	
1,800.0	1,792.1	1,838.9	1,771.2	4.8	8.7	19.43	216.5	27.4	67.9	55.3	12.65	5.370	
1,900.0	1,891.6	1,930.1	1,853.4	5.1	9.5	-7.71	239.0	-5.2	79.5	67.3	12.13	6.553	
2,000.0	1,991.0	2,020.5	1,934.4	5.4	10.3	-25.28	262.8	-37.4	106.5	94.9	11.64	9.154	
2,100.0	2,090.4	2,113.0	2,017.5	5.7	11.1	-35.79	287.0	-70.0	139.2	127.7	11.56	12.042	
2,200.0	2,189.9	2,201.7	2,096.9	6.0	11.9	-42.16	310.4	-101.9	175.3	163.5	11.81	14.843	
2,300.0	2,289.3	2,291.1	2,176.2	6.3	12.7	-45.72	336.9	-133.5	214.5	202.3	12.24	17.522	
2,400.0	2,388.8	2,390.1	2,264.5	6.6	13.6	-48.21	366.4	-167.1	253.3	240.5	12.76	19.854	
2,500.0	2,488.2	2,487.0	2,352.0	6.9	14.4	-50.89	390.5	-201.2	290.0	276.7	13.30	21.812	
2,600.0	2,587.6	2,573.2	2,429.7	7.1	15.2	-53.01	410.9	-232.4	327.4	313.5	13.86	23.630	
2,700.0	2,687.1	2,664.9	2,511.9	7.4	16.0	-54.64	434.0	-265.8	366.1	351.6	14.46	25.322	
2,800.0	2,786.5	2,744.9	2,583.2	7.7	16.7	-55.54	456.0	-294.6	406.1	391.0	15.03	27.021	
2,900.0	2,885.9	2,819.3	2,648.3	8.0	17.5	-55.94	479.4	-322.1	449.2	433.6	15.59	28.819	
3,000.0	2,985.4	2,900.9	2,718.1	8.3	18.3	-56.11	507.7	-353.5	495.4	479.2	16.17	30.629	
3,100.0	3,084.8	3,019.0	2,820.3	8.6	19.5	-56.45	546.6	-397.9	540.1	523.3	16.88	32.004	
3,200.0	3,184.3	3,118.3	2,908.7	8.9	20.4	-56.84	575.8	-432.3	580.0	562.5	17.51	33.119	
3,300.0	3,283.7	3,210.8	2,991.0	9.2	21.3	-57.03	604.1	-463.8	620.2	602.0	18.13	34.214	
3,400.0	3,383.1	3,327.0	3,095.3	9.5	22.3	-57.36	637.6	-502.6	658.8	640.0	18.82	35.000	
3,500.0	3,482.6	3,446.4	3,205.1	9.8	23.2	-57.97	666.2	-539.7	692.6	673.0	19.53	35.465	
3,600.0	3,582.0	3,518.0	3,270.7	10.1	23.8	-58.30	683.5	-562.4	727.1	707.0	20.07	36.227	
3,700.0	3,681.4	3,623.2	3,366.9	10.4	24.6	-58.64	710.5	-595.7	762.5	741.8	20.74	36.766	
3,800.0	3,780.9	3,752.1	3,486.2	10.7	25.6	-59.15	740.1	-634.0	794.8	773.3	21.48	37.004	
3,900.0	3,880.3	3,857.9	3,585.5	11.0	26.3	-59.60	762.0	-663.3	824.2	802.0	22.13	37.241	
4,000.0	3,979.7	3,925.5	3,648.8	11.3	26.8	-59.95	775.1	-682.9	854.3	831.7	22.67	37.693	
4,100.0	4,079.2	3,986.0	3,704.3	11.6	27.2	-60.19	789.0	-702.8	889.1	866.0	23.18	38.362	
4,200.0	4,178.6	4,054.3	3,765.9	11.9	27.8	-60.44	805.9	-726.9	927.1	903.3	23.73	39.066	
4,300.0	4,278.1	4,122.7	3,827.3	12.2	28.5	-60.71	822.7	-751.9	966.4	942.1	24.29	39.785	

Company:	Synergy Resources	Local Co-ordinate Reference:	Well SRC Kelly Farms A-4-3NHZ
Project:	SEC.4-T5N-R66W	TVD Reference:	WELL @ 4766.5ft (Ensign Rig #131 - RKB - 13.5')
Reference Site:	SRC Kelly Farms Pad Sec.4-T5N-R66W	MD Reference:	WELL @ 4766.5ft (Ensign Rig #131 - RKB - 13.5')
Site Error:	0.0ft	North Reference:	True
Reference Well:	SRC Kelly Farms A-4-3NHZ	Survey Calculation Method:	Minimum Curvature
Well Error:	0.0ft	Output errors are at	2.00 sigma
Reference Wellbore	Wellbore #1	Database:	Landmark
Reference Design:	Plan #2 (4-21-14)	Offset TVD Reference:	Offset Datum

Offset Design Northridge Pad Sec.4-T5N-R66W - Northridge 12-4D (Exist.) - Wellbore #1 - Wellbore #1													Offset Site Error: 0.0 ft	
Survey Program: 182-MWD													Offset Well Error: 0.0 ft	
Reference		Offset		Semi Major Axis		Distance							Warning	
Measured Depth (ft)	Vertical Depth (ft)	Measured Depth (ft)	Vertical Depth (ft)	Reference (ft)	Offset (ft)	Highside Toolface (°)	Offset Wellbore Centre +N/-S (ft)	+E/-W (ft)	Between Centres (ft)	Between Ellipses (ft)	Minimum Separation (ft)	Separation Factor		
0.0	0.0	0.0	0.0	0.0	0.0	97.49	-45.2	343.5	346.7					
100.0	100.0	87.1	87.1	0.1	0.1	97.48	-45.1	343.6	346.5	346.3	0.21	1,647.892		
200.0	200.0	186.7	186.7	0.3	0.2	97.45	-45.0	343.8	346.7	346.2	0.55	629.159		
300.0	300.0	289.4	289.4	0.6	0.4	96.59	-45.6	343.7	346.9	345.9	0.98	352.249		
400.0	399.8	401.3	401.3	0.8	0.7	97.47	-44.6	341.6	345.6	344.1	1.45	238.519		
500.0	499.5	525.3	524.8	1.0	1.0	98.95	-40.5	333.0	339.5	337.5	1.99	171.008		
600.0	598.9	634.8	633.3	1.3	1.3	100.45	-35.1	319.3	328.0	325.5	2.52	130.111		
700.0	698.3	741.2	738.4	1.6	1.6	101.84	-28.4	303.8	314.3	311.3	3.05	102.997		
800.0	797.8	842.0	837.7	1.9	2.0	103.42	-22.3	287.4	299.4	295.8	3.57	83.969		
900.0	897.2	946.4	940.3	2.2	2.4	105.44	-16.7	269.1	283.6	279.5	4.09	69.279		
1,000.0	996.6	1,047.0	1,038.9	2.5	2.8	107.45	-10.0	249.8	266.2	261.6	4.62	57.604		
1,100.0	1,096.1	1,143.1	1,132.9	2.7	3.2	109.90	-4.7	231.1	249.1	244.0	5.13	48.594		
1,200.0	1,195.5	1,246.6	1,234.0	3.0	3.6	113.48	-0.8	209.5	232.1	226.4	5.67	40.966		
1,300.0	1,294.9	1,349.0	1,333.3	3.3	4.1	118.21	2.3	184.6	213.3	207.1	6.26	34.093		
1,400.0	1,394.4	1,440.8	1,422.2	3.6	4.5	123.71	3.5	161.6	196.3	189.4	6.85	28.644		
1,500.0	1,493.8	1,531.5	1,510.4	3.9	4.9	130.08	2.6	140.7	184.5	177.0	7.49	24.647		
1,600.0	1,593.3	1,637.2	1,612.9	4.2	5.4	138.54	2.6	114.7	174.1	165.8	8.30	20.978		
1,700.0	1,692.7	1,733.2	1,705.2	4.5	6.0	147.75	2.8	88.4	165.8	156.6	9.20	18.016		
1,800.0	1,792.1	1,831.1	1,798.8	4.8	6.5	158.46	3.1	59.4	161.5	151.3	10.22	15.808		
1,835.6	1,827.6	1,865.4	1,831.3	4.9	6.7	162.41	3.4	48.8	161.2	150.6	10.59	15.219	CC, ES	
1,900.0	1,891.6	1,924.8	1,887.7	5.1	7.1	169.40	3.8	30.0	162.6	151.4	11.24	14.471		
2,000.0	1,991.0	2,013.0	1,971.3	5.4	7.7	179.40	1.8	1.8	172.9	160.8	12.15	14.228	SF	
2,100.0	2,090.4	2,107.2	2,060.3	5.7	8.3	-171.21	-1.5	-28.6	190.4	177.3	13.03	14.612		
2,200.0	2,189.9	2,202.5	2,149.5	6.0	8.9	-162.48	-3.3	-62.1	211.7	197.8	13.83	15.302		
2,300.0	2,289.3	2,299.2	2,239.6	6.3	9.6	-154.91	-3.7	-97.1	236.3	221.8	14.54	16.251		
2,400.0	2,388.8	2,402.9	2,337.0	6.6	10.2	-148.34	-0.7	-132.8	260.5	245.3	15.19	17.151		
2,500.0	2,488.2	2,497.1	2,425.8	6.9	10.8	-143.50	3.3	-163.8	285.1	269.3	15.77	18.072		
2,600.0	2,587.6	2,586.9	2,510.2	7.1	11.5	-139.48	6.6	-194.5	312.6	296.3	16.35	19.122		
2,700.0	2,687.1	2,676.3	2,593.8	7.4	12.1	-135.95	10.2	-225.9	342.0	325.0	16.93	20.199		
2,800.0	2,786.5	2,752.7	2,664.2	7.7	12.7	-133.13	12.5	-255.4	375.7	358.2	17.47	21.508		
2,900.0	2,885.9	2,831.7	2,735.8	8.0	13.4	-130.40	14.3	-288.8	413.7	395.6	18.03	22.943		
3,000.0	2,985.4	2,930.0	2,824.7	8.3	14.2	-127.56	16.1	-330.7	453.2	434.6	18.63	24.324		
3,100.0	3,084.8	3,025.0	2,911.1	8.6	15.0	-125.23	19.1	-370.0	491.6	472.4	19.21	25.593		
3,200.0	3,184.3	3,107.2	2,985.3	8.9	15.7	-123.27	23.2	-405.1	530.9	511.1	19.77	26.852		
3,300.0	3,283.7	3,214.8	3,082.7	9.2	16.7	-121.20	27.5	-450.5	570.8	550.4	20.41	27.970		
3,400.0	3,383.1	3,316.6	3,176.4	9.5	17.4	-119.70	31.5	-490.2	608.3	587.3	21.00	28.966		
3,500.0	3,482.6	3,402.7	3,256.1	9.8	18.1	-118.79	33.0	-522.8	645.9	624.3	21.56	29.962		
3,600.0	3,582.0	3,589.4	3,433.2	10.1	19.2	-117.97	31.7	-581.1	680.2	657.8	22.39	30.378		
3,700.0	3,681.4	3,687.6	3,528.4	10.4	19.7	-117.53	35.6	-605.1	705.1	682.1	22.96	30.717		
3,800.0	3,780.9	3,775.0	3,613.0	10.7	20.1	-117.18	38.7	-626.6	730.4	706.9	23.50	31.086		
3,900.0	3,880.3	3,845.2	3,680.5	11.0	20.5	-116.82	41.4	-645.7	758.1	734.1	24.01	31.578		
4,000.0	3,979.7	3,917.2	3,749.0	11.3	21.0	-116.41	43.9	-668.0	789.1	764.5	24.53	32.172		
4,100.0	4,079.2	3,990.9	3,818.4	11.6	21.5	-116.01	45.8	-692.4	822.6	797.5	25.06	32.826		
4,200.0	4,178.6	4,064.3	3,887.0	11.9	22.0	-115.61	47.1	-718.4	858.5	832.9	25.60	33.539		
4,300.0	4,278.1	4,149.0	3,965.6	12.2	22.7	-115.14	48.5	-750.1	896.2	870.0	26.18	34.233		
4,400.0	4,377.5	4,260.8	4,069.6	12.5	23.5	-114.60	50.3	-791.1	933.5	906.7	26.84	34.784		
4,500.0	4,476.9	4,364.3	4,167.1	12.7	24.2	-114.29	50.7	-825.9	968.3	940.9	27.46	35.265		

Company:	Synergy Resources	Local Co-ordinate Reference:	Well SRC Kelly Farms A-4-3NHZ
Project:	SEC.4-T5N-R66W	TVD Reference:	WELL @ 4766.5ft (Ensign Rig #131 - RKB - 13.5')
Reference Site:	SRC Kelly Farms Pad Sec.4-T5N-R66W	MD Reference:	WELL @ 4766.5ft (Ensign Rig #131 - RKB - 13.5')
Site Error:	0.0ft	North Reference:	True
Reference Well:	SRC Kelly Farms A-4-3NHZ	Survey Calculation Method:	Minimum Curvature
Well Error:	0.0ft	Output errors are at	2.00 sigma
Reference Wellbore	Wellbore #1	Database:	Landmark
Reference Design:	Plan #2 (4-21-14)	Offset TVD Reference:	Offset Datum

Offset Design Northridge Pad Sec.4-T5N-R66W - Northridge 21-4D (Exist.) - Wellbore #1 - Wellbore #1												Offset Site Error: 0.0 ft	
Survey Program: 150-MWD												Offset Well Error: 0.0 ft	
Reference		Offset		Semi Major Axis		Distance							Warning
Measured Depth (ft)	Vertical Depth (ft)	Measured Depth (ft)	Vertical Depth (ft)	Reference (ft)	Offset (ft)	Highside Toolface (°)	Offset Wellbore Centre +N/-S (ft)	+E/-W (ft)	Between Centres (ft)	Between Ellipses (ft)	Minimum Separation (ft)	Separation Factor	
0.0	0.0	0.0	0.0	0.0	0.0	92.19	-13.8	361.4	361.9				
100.0	100.0	85.3	85.3	0.1	0.1	92.15	-13.6	361.5	361.8	361.6	0.21	1,735.252	
200.0	200.0	186.4	186.4	0.3	0.3	91.97	-12.5	362.0	362.2	361.6	0.59	616.833	
300.0	300.0	294.1	294.0	0.6	0.5	90.36	-8.2	361.1	361.3	360.2	1.06	341.157	
400.0	399.8	401.7	401.2	0.8	0.8	90.06	-0.2	357.8	358.1	356.5	1.56	229.691	
500.0	499.5	506.5	505.4	1.0	1.1	90.00	10.0	352.9	353.2	351.1	2.10	168.528	
600.0	598.9	609.8	607.7	1.3	1.4	89.63	23.3	347.0	347.1	344.4	2.68	129.393	
700.0	698.3	709.5	706.0	1.6	1.7	88.85	38.5	340.7	340.6	337.3	3.30	103.212	
800.0	797.8	810.8	805.8	1.9	2.1	87.95	54.4	334.4	334.1	330.1	3.94	84.763	
900.0	897.2	914.9	907.9	2.2	2.5	86.50	73.5	326.6	326.6	321.9	4.64	70.347	
1,000.0	996.6	1,017.7	1,007.7	2.5	3.0	84.27	96.1	317.4	318.0	312.6	5.41	58.808	
1,100.0	1,096.1	1,123.5	1,109.4	2.7	3.6	81.14	123.0	306.1	308.6	302.4	6.26	49.322	
1,200.0	1,195.5	1,222.6	1,203.7	3.0	4.2	77.42	150.8	293.2	298.3	291.2	7.14	41.804	
1,300.0	1,294.9	1,316.9	1,292.5	3.3	4.8	73.10	180.1	280.8	290.0	282.0	8.03	36.093	
1,400.0	1,394.4	1,414.1	1,383.8	3.6	5.4	68.32	210.9	268.4	284.1	275.2	8.90	31.913	
1,500.0	1,493.8	1,514.1	1,478.1	3.9	5.9	63.41	241.7	255.3	279.7	270.0	9.73	28.759	
1,600.0	1,593.3	1,612.5	1,571.1	4.2	6.5	58.60	270.9	242.0	276.6	266.1	10.50	26.327	
1,700.0	1,692.7	1,709.7	1,663.1	4.5	7.0	53.93	299.1	229.1	275.2	263.9	11.22	24.526	
1,724.5	1,717.0	1,733.7	1,685.9	4.6	7.2	52.80	305.9	225.9	275.1	263.7	11.39	24.160 CC	
1,800.0	1,792.1	1,807.9	1,756.5	4.8	7.6	49.39	326.7	216.4	275.6	263.7	11.89	23.177 ES	
1,900.0	1,891.6	1,905.7	1,849.8	5.1	8.1	45.13	353.4	204.4	277.5	265.0	12.51	22.189	
2,000.0	1,991.0	2,004.2	1,944.1	5.4	8.6	41.11	379.6	192.9	280.9	267.8	13.08	21.477	
2,100.0	2,090.4	2,103.8	2,039.6	5.7	9.2	37.23	405.4	181.3	285.1	271.5	13.62	20.937	
2,200.0	2,189.9	2,201.6	2,133.1	6.0	9.7	33.32	431.4	168.9	290.6	276.5	14.11	20.594	
2,300.0	2,289.3	2,300.9	2,228.2	6.3	10.3	29.62	457.0	156.5	297.0	282.4	14.57	20.382	
2,400.0	2,388.8	2,397.1	2,320.6	6.6	10.8	26.41	481.5	145.6	304.6	289.6	14.99	20.315	
2,500.0	2,488.2	2,491.4	2,410.9	6.9	11.3	23.34	506.4	134.9	314.2	298.8	15.40	20.406	
2,600.0	2,587.6	2,587.6	2,502.5	7.1	11.9	20.20	533.3	123.4	325.9	310.1	15.78	20.645	
2,700.0	2,687.1	2,682.5	2,592.9	7.4	12.5	17.17	560.0	111.3	338.5	322.3	16.16	20.950	
2,800.0	2,786.5	2,772.3	2,677.6	7.7	13.0	14.31	587.2	99.2	354.1	337.6	16.51	21.447	
2,900.0	2,885.9	2,872.1	2,771.3	8.0	13.7	11.34	618.5	85.6	371.6	354.8	16.87	22.028	
3,000.0	2,985.4	2,975.8	2,869.6	8.3	14.3	8.72	648.7	72.3	387.8	370.5	17.24	22.490	
3,100.0	3,084.8	3,068.3	2,957.3	8.6	14.9	6.52	675.6	60.1	404.6	387.0	17.60	22.986	
3,200.0	3,184.3	3,170.8	3,054.1	8.9	15.5	4.26	706.3	46.5	423.0	405.0	17.98	23.524	
3,300.0	3,283.7	3,277.9	3,156.2	9.2	16.1	2.21	735.6	32.9	439.1	420.7	18.36	23.911	
3,400.0	3,383.1	3,374.8	3,249.0	9.5	16.7	0.63	761.2	21.7	454.8	436.1	18.75	24.255	
3,500.0	3,482.6	3,486.1	3,355.8	9.8	17.3	-1.06	789.7	8.7	470.1	450.9	19.16	24.528	
3,600.0	3,582.0	3,588.7	3,454.9	10.1	17.8	-2.48	813.8	-2.9	483.4	463.9	19.56	24.713	
3,700.0	3,681.4	3,689.2	3,552.1	10.4	18.3	-3.80	836.8	-14.2	496.3	476.4	19.96	24.864	
3,800.0	3,780.9	3,780.4	3,640.2	10.7	18.7	-4.88	858.0	-24.0	509.9	489.5	20.36	25.040	
3,900.0	3,880.3	3,861.0	3,717.4	11.0	19.2	-5.86	879.1	-33.5	526.6	505.9	20.75	25.376	
4,000.0	3,979.7	3,941.1	3,793.2	11.3	19.7	-6.90	902.5	-44.3	546.9	525.7	21.16	25.844	
4,100.0	4,079.2	4,026.8	3,873.8	11.6	20.2	-8.01	929.2	-56.7	569.5	547.9	21.59	26.378	
4,200.0	4,178.6	4,122.7	3,963.4	11.9	20.9	-9.11	960.2	-70.2	593.5	571.4	22.05	26.920	
4,300.0	4,278.1	4,248.6	4,082.5	12.2	21.7	-10.28	998.3	-85.8	615.3	592.7	22.57	27.261	
4,400.0	4,377.5	4,342.7	4,172.1	12.5	22.2	-11.00	1,024.9	-96.2	635.0	612.0	23.03	27.575	
4,500.0	4,476.9	4,427.8	4,252.8	12.7	22.7	-11.62	1,050.1	-105.8	656.2	632.7	23.48	27.949	
4,600.0	4,576.4	4,525.4	4,345.1	13.0	23.3	-12.32	1,079.6	-117.5	678.3	654.3	23.96	28.303	
4,700.0	4,675.8	4,611.0	4,425.9	13.3	23.9	-12.97	1,105.6	-128.5	700.8	676.4	24.42	28.695	
4,800.0	4,775.2	4,691.5	4,501.4	13.6	24.4	-13.54	1,131.6	-139.1	725.4	700.5	24.88	29.153	
4,900.0	4,874.7	4,809.4	4,611.7	13.9	25.2	-14.39	1,169.7	-155.7	750.4	725.0	25.44	29.495	

CC - Min centre to center distance or convergent point, SF - min separation factor, ES - min ellipse separation

Company:	Synergy Resources	Local Co-ordinate Reference:	Well SRC Kelly Farms A-4-3NHZ
Project:	SEC.4-T5N-R66W	TVD Reference:	WELL @ 4766.5ft (Ensign Rig #131 - RKB - 13.5')
Reference Site:	SRC Kelly Farms Pad Sec.4-T5N-R66W	MD Reference:	WELL @ 4766.5ft (Ensign Rig #131 - RKB - 13.5')
Site Error:	0.0ft	North Reference:	True
Reference Well:	SRC Kelly Farms A-4-3NHZ	Survey Calculation Method:	Minimum Curvature
Well Error:	0.0ft	Output errors are at	2.00 sigma
Reference Wellbore	Wellbore #1	Database:	Landmark
Reference Design:	Plan #2 (4-21-14)	Offset TVD Reference:	Offset Datum

Offset Design Northridge Pad Sec.4-T5N-R66W - Northridge 21-4D (Exist.) - Wellbore #1 - Wellbore #1													Offset Site Error: 0.0 ft
Survey Program: 150-MWD													Offset Well Error: 0.0 ft
Reference		Offset		Semi Major Axis			Distance						
Measured Depth (ft)	Vertical Depth (ft)	Measured Depth (ft)	Vertical Depth (ft)	Reference (ft)	Offset (ft)	Highside Toolface (°)	Offset Wellbore Centre +N/-S (ft)	+E/-W (ft)	Between Centres (ft)	Between Ellipses (ft)	Minimum Separation (ft)	Separation Factor	Warning
5,000.0	4,974.2	4,908.5	4,704.9	14.2	25.8	-15.20	1,200.0	-170.0	774.8	749.0	25.86	29.964	
5,100.0	5,074.0	5,012.2	4,802.9	14.4	26.5	-15.90	1,231.1	-183.8	801.6	775.4	26.21	30.587	
5,200.0	5,174.0	5,117.4	4,902.5	14.5	27.1	-16.51	1,262.3	-197.5	831.3	804.7	26.52	31.340	
5,300.0	5,274.0	5,274.9	5,053.6	14.7	28.0	-15.70	1,302.9	-214.7	859.1	816.9	42.25	20.333	
5,400.0	5,374.0	5,480.2	5,255.4	14.9	28.7	-16.03	1,337.1	-229.4	877.0	833.8	43.20	20.304	
5,500.0	5,474.0	5,606.5	5,380.9	15.0	29.0	-16.17	1,349.2	-235.1	887.5	843.8	43.69	20.315	
5,600.0	5,574.0	5,723.0	5,497.0	15.2	29.3	-16.25	1,357.7	-238.9	895.4	851.3	44.11	20.298	
5,700.0	5,674.0	5,840.1	5,613.9	15.4	29.5	-16.29	1,364.5	-241.5	901.6	857.1	44.50	20.259	
5,800.0	5,774.0	5,965.8	5,739.5	15.6	29.7	-16.30	1,368.8	-242.9	905.1	860.3	44.86	20.178	
5,900.0	5,874.0	6,075.8	5,849.5	15.8	29.8	-16.33	1,370.3	-244.0	906.7	861.6	45.16	20.076	
6,000.0	5,974.0	6,176.4	5,950.1	15.9	29.9	-16.40	1,371.1	-245.2	907.8	862.4	45.46	19.972	
6,100.0	6,074.0	6,274.9	6,048.6	16.1	30.0	-16.47	1,371.9	-246.8	909.1	863.3	45.75	19.872	
6,200.0	6,174.0	6,372.2	6,145.8	16.3	30.1	-16.56	1,372.9	-248.5	910.5	864.5	46.04	19.776 SF	
6,300.0	6,274.0	6,468.6	6,242.2	16.5	30.2	-106.63	1,374.1	-250.3	912.6	881.3	31.25	29.200	
6,400.0	6,373.3	6,563.2	6,336.8	16.6	30.3	-106.95	1,375.8	-252.0	917.9	886.5	31.43	29.205	
6,500.0	6,470.7	6,657.1	6,430.7	16.8	30.5	-107.62	1,378.0	-253.6	927.6	896.0	31.60	29.353	
6,600.0	6,564.5	6,748.3	6,521.8	17.0	30.6	-108.52	1,380.4	-255.0	942.1	910.3	31.77	29.653	
6,700.0	6,653.5	6,837.4	6,610.9	17.3	30.7	-109.55	1,382.8	-256.3	961.9	930.0	31.96	30.101	
6,800.0	6,736.2	6,917.1	6,690.5	17.5	30.8	-110.33	1,384.9	-257.4	988.0	955.8	32.23	30.654	

Company:	Synergy Resources	Local Co-ordinate Reference:	Well SRC Kelly Farms A-4-3NHZ
Project:	SEC.4-T5N-R66W	TVD Reference:	WELL @ 4766.5ft (Ensign Rig #131 - RKB - 13.5')
Reference Site:	SRC Kelly Farms Pad Sec.4-T5N-R66W	MD Reference:	WELL @ 4766.5ft (Ensign Rig #131 - RKB - 13.5')
Site Error:	0.0ft	North Reference:	True
Reference Well:	SRC Kelly Farms A-4-3NHZ	Survey Calculation Method:	Minimum Curvature
Well Error:	0.0ft	Output errors are at	2.00 sigma
Reference Wellbore	Wellbore #1	Database:	Landmark
Reference Design:	Plan #2 (4-21-14)	Offset TVD Reference:	Offset Datum

Offset Design Northridge Pad Sec.4-T5N-R66W - Northridge 22-4D (Exist.) - Wellbore #1 - Wellbore #1													Offset Site Error:	0.0 ft
Survey Program: 182-MWD													Offset Well Error:	0.0 ft
Reference		Offset		Semi Major Axis		Distance								
Measured Depth (ft)	Vertical Depth (ft)	Measured Depth (ft)	Vertical Depth (ft)	Reference (ft)	Offset (ft)	Highside Toolface (°)	Offset Wellbore Centre +N/-S (ft)	+E/-W (ft)	Between Centres (ft)	Between Ellipses (ft)	Minimum Separation (ft)	Separation Factor	Warning	
0.0	0.0	0.0	0.0	0.0	0.0	99.37	-55.7	337.7	342.5					
100.0	100.0	84.8	84.8	0.1	0.1	99.48	-56.4	337.9	342.6	342.4	0.21	1,609.805	ES	
200.0	200.0	182.0	182.0	0.3	0.2	99.87	-58.9	338.7	343.8	343.3	0.55	622.446		
300.0	300.0	282.5	282.4	0.6	0.4	99.37	-62.2	339.7	345.7	344.7	0.99	349.809		
400.0	399.8	382.8	382.7	0.8	0.6	100.62	-65.1	340.6	348.0	346.6	1.43	243.917		
500.0	499.5	483.0	482.8	1.0	0.9	102.31	-67.5	341.4	351.1	349.2	1.89	185.343		
600.0	598.9	583.1	582.9	1.3	1.1	104.28	-69.5	341.9	354.5	352.1	2.38	149.038		
700.0	698.3	682.5	682.3	1.6	1.3	106.15	-71.2	342.5	358.4	355.6	2.86	125.136		
800.0	797.8	784.4	784.2	1.9	1.5	108.00	-72.7	342.7	362.2	358.8	3.36	107.888		
900.0	897.2	886.5	886.2	2.2	1.7	109.54	-72.2	342.8	365.5	361.7	3.85	94.883		
1,000.0	996.6	989.0	988.8	2.5	1.9	110.82	-70.0	342.8	368.4	364.1	4.34	84.797		
1,100.0	1,096.1	1,090.2	1,089.9	2.7	2.1	112.19	-68.4	341.8	370.7	365.9	4.83	76.811		
1,200.0	1,195.5	1,190.5	1,190.2	3.0	2.3	113.58	-66.9	340.4	373.1	367.7	5.31	70.238		
1,300.0	1,294.9	1,290.6	1,290.3	3.3	2.6	114.95	-65.4	338.9	375.4	369.6	5.80	64.699		
1,400.0	1,394.4	1,391.0	1,390.7	3.6	2.8	116.30	-63.7	337.3	377.8	371.5	6.29	60.031		
1,500.0	1,493.8	1,489.0	1,488.6	3.9	3.0	117.63	-62.3	335.6	380.5	373.7	6.77	56.230		
1,600.0	1,593.3	1,588.5	1,588.1	4.2	3.2	118.98	-61.1	334.1	383.6	376.4	7.24	53.006		
1,700.0	1,692.7	1,689.9	1,689.5	4.5	3.4	120.39	-60.1	332.1	386.7	379.0	7.72	50.112		
1,800.0	1,792.1	1,789.2	1,788.7	4.8	3.6	121.88	-59.8	329.6	389.8	381.6	8.19	47.613		
1,900.0	1,891.6	1,888.7	1,888.2	5.1	3.8	123.37	-59.6	327.0	393.3	384.6	8.65	45.453		
2,000.0	1,991.0	1,991.9	1,991.4	5.4	4.0	124.95	-59.5	323.6	396.5	387.4	9.13	43.435		
2,100.0	2,090.4	2,093.6	2,093.0	5.7	4.2	126.58	-59.3	319.1	399.0	389.4	9.60	41.559		
2,200.0	2,189.9	2,195.1	2,194.4	6.0	4.5	128.27	-59.4	314.1	401.7	391.6	10.07	39.904		
2,300.0	2,289.3	2,301.1	2,300.1	6.3	4.7	130.22	-59.8	306.8	403.4	392.9	10.54	38.267		
2,400.0	2,388.8	2,409.3	2,407.9	6.6	5.0	132.43	-60.1	296.7	403.7	392.7	11.03	36.613		
2,500.0	2,488.2	2,510.4	2,508.0	6.9	5.2	134.94	-61.4	283.9	402.9	391.4	11.49	35.056		
2,600.0	2,587.6	2,625.1	2,621.4	7.1	5.5	138.16	-62.9	265.9	400.9	388.9	12.00	33.418		
2,700.0	2,687.1	2,728.4	2,722.6	7.4	5.9	141.50	-63.7	245.6	396.9	384.4	12.49	31.773		
2,800.0	2,786.5	2,825.4	2,817.3	7.7	6.2	144.95	-65.1	224.7	393.9	380.9	12.99	30.310		
2,900.0	2,885.9	2,923.6	2,912.6	8.0	6.6	148.92	-68.1	201.1	392.3	378.8	13.53	28.994		
2,973.1	2,958.6	2,996.5	2,982.8	8.2	6.9	152.14	-70.8	181.6	391.9	378.0	13.95	28.095		
3,000.0	2,985.4	3,021.1	3,006.4	8.3	7.0	153.25	-71.7	174.9	392.0	377.9	14.09	27.818		
3,100.0	3,084.8	3,114.2	3,096.3	8.6	7.3	157.27	-75.3	150.7	394.5	379.9	14.63	26.961		
3,200.0	3,184.3	3,215.9	3,194.6	8.9	7.7	161.48	-78.6	124.9	398.9	383.7	15.21	26.235		
3,300.0	3,283.7	3,317.4	3,292.2	9.2	8.1	165.77	-80.0	97.2	403.1	387.2	15.82	25.475		
3,400.0	3,383.1	3,407.9	3,379.9	9.5	8.5	169.21	-81.0	74.7	409.6	393.2	16.40	24.974		
3,500.0	3,482.6	3,498.8	3,468.1	9.8	8.9	172.46	-83.4	52.9	419.3	402.4	16.99	24.685		
3,600.0	3,582.0	3,595.5	3,561.6	10.1	9.3	175.91	-86.5	28.6	431.2	413.5	17.64	24.447		
3,700.0	3,681.4	3,691.1	3,653.6	10.4	9.8	179.40	-89.2	2.6	444.2	425.9	18.31	24.256		
3,800.0	3,780.9	3,782.4	3,741.2	10.7	10.3	-177.37	-92.3	-22.8	459.4	440.4	18.98	24.202		
3,900.0	3,880.3	3,875.0	3,829.8	11.0	10.8	-174.20	-96.1	-49.5	477.0	457.3	19.67	24.248		
4,000.0	3,979.7	3,970.6	3,920.9	11.3	11.3	-171.01	-99.8	-78.2	496.1	475.7	20.37	24.350		
4,100.0	4,079.2	4,066.6	4,012.5	11.6	11.8	-168.06	-103.3	-106.8	516.3	495.3	21.04	24.538		
4,200.0	4,178.6	4,166.5	4,108.7	11.9	12.3	-165.59	-107.3	-133.1	537.3	515.6	21.68	24.780		
4,300.0	4,278.1	4,268.5	4,207.8	12.2	12.7	-163.55	-111.1	-157.1	557.9	535.6	22.30	25.020		
4,400.0	4,377.5	4,372.9	4,309.9	12.5	13.1	-161.88	-114.8	-178.8	577.9	555.1	22.89	25.245		
4,500.0	4,476.9	4,477.2	4,412.4	12.7	13.5	-160.55	-117.9	-197.9	597.0	573.5	23.47	25.441		
4,600.0	4,576.4	4,585.1	4,518.8	13.0	13.9	-159.46	-120.5	-215.2	615.0	590.9	24.03	25.595		
4,700.0	4,675.8	4,699.1	4,631.9	13.3	14.2	-158.76	-122.6	-228.8	631.0	606.4	24.56	25.690		
4,800.0	4,775.2	4,817.2	4,749.6	13.6	14.5	-158.35	-123.0	-238.9	644.5	619.4	25.08	25.701		
4,900.0	4,874.7	4,927.8	4,860.1	13.9	14.7	-158.21	-121.6	-244.6	655.1	629.6	25.55	25.641		

CC - Min centre to center distance or convergent point, SF - min separation factor, ES - min ellipse separation

Company:	Synergy Resources	Local Co-ordinate Reference:	Well SRC Kelly Farms A-4-3NHZ
Project:	SEC.4-T5N-R66W	TVD Reference:	WELL @ 4766.5ft (Ensign Rig #131 - RKB - 13.5')
Reference Site:	SRC Kelly Farms Pad Sec.4-T5N-R66W	MD Reference:	WELL @ 4766.5ft (Ensign Rig #131 - RKB - 13.5')
Site Error:	0.0ft	North Reference:	True
Reference Well:	SRC Kelly Farms A-4-3NHZ	Survey Calculation Method:	Minimum Curvature
Well Error:	0.0ft	Output errors are at	2.00 sigma
Reference Wellbore	Wellbore #1	Database:	Landmark
Reference Design:	Plan #2 (4-21-14)	Offset TVD Reference:	Offset Datum

Offset Design Northridge Pad Sec.4-T5N-R66W - Northridge 22-4D (Exist.) - Wellbore #1 - Wellbore #1												Offset Site Error: 0.0 ft	
Survey Program: 182-MWD												Offset Well Error: 0.0 ft	
Reference		Offset		Semi Major Axis			Distance						
Measured Depth	Vertical Depth	Measured Depth	Vertical Depth	Reference	Offset	Highside Toolface	Offset Wellbore Centre		Between Centres	Between Ellipses	Minimum Separation	Separation Factor	Warning
(ft)	(ft)	(ft)	(ft)	(ft)	(ft)	(°)	+N/-S (ft)	+E/-W (ft)	(ft)	(ft)	(ft)		
5,000.0	4,974.2	5,027.5	4,959.8	14.2	14.9	-158.30	-120.6	-247.6	664.2	638.2	26.00	25.551	
5,100.0	5,074.0	5,125.8	5,058.0	14.4	15.1	-158.37	-120.2	-249.5	670.3	644.0	26.37	25.419	
5,200.0	5,174.0	5,226.4	5,158.6	14.5	15.2	-158.34	-120.0	-251.2	673.3	646.6	26.71	25.207	
5,300.0	5,274.0	5,325.2	5,257.4	14.7	15.4	-156.98	-120.0	-252.5	673.9	647.0	26.93	25.025	
5,400.0	5,374.0	5,423.5	5,355.7	14.9	15.5	-156.91	-120.3	-253.6	674.6	647.4	27.29	24.721	
5,500.0	5,474.0	5,521.7	5,453.9	15.0	15.7	-156.89	-121.1	-254.2	675.6	648.0	27.65	24.433	
5,600.0	5,574.0	5,620.2	5,552.4	15.2	15.8	-156.90	-122.3	-254.5	676.9	648.9	28.02	24.160	
5,700.0	5,674.0	5,721.3	5,653.5	15.4	16.0	-156.93	-123.6	-254.7	678.1	649.8	28.39	23.889	
5,800.0	5,774.0	5,821.6	5,753.8	15.6	16.2	-156.97	-124.9	-254.7	679.3	650.5	28.76	23.622	
5,900.0	5,874.0	5,921.9	5,854.1	15.8	16.3	-157.01	-126.1	-254.8	680.4	651.3	29.13	23.359	
6,000.0	5,974.0	6,021.8	5,953.9	15.9	16.5	-157.02	-127.1	-255.0	681.5	652.0	29.50	23.099	
6,100.0	6,074.0	6,120.1	6,052.3	16.1	16.6	-157.05	-128.4	-255.2	682.7	652.8	29.87	22.853	
6,200.0	6,174.0	6,220.3	6,152.4	16.3	16.8	-157.08	-129.8	-255.4	684.0	653.8	30.25	22.611	
6,300.0	6,274.0	6,318.1	6,250.3	16.5	16.9	-112.88	-131.2	-255.5	685.8	655.1	30.73	22.316	
6,400.0	6,373.3	6,415.3	6,347.4	16.6	17.1	113.24	-133.1	-255.6	691.8	660.8	31.02	22.302 SF	
6,500.0	6,470.7	6,510.9	6,443.0	16.8	17.3	114.06	-135.3	-255.5	703.2	672.0	31.22	22.525	
6,600.0	6,564.5	6,601.6	6,533.7	17.0	17.4	115.21	-137.4	-256.0	720.8	689.5	31.34	23.002	
6,700.0	6,653.5	6,688.0	6,620.0	17.3	17.6	116.47	-139.4	-257.3	745.5	714.1	31.40	23.738	
6,800.0	6,736.2	6,768.6	6,700.6	17.5	17.7	117.53	-141.3	-258.7	778.2	746.7	31.49	24.708	
6,900.0	6,811.5	6,842.7	6,774.7	17.9	17.9	118.12	-143.0	-260.0	819.4	787.6	31.73	25.825	
7,000.0	6,878.2	6,906.6	6,838.5	18.5	18.0	117.83	-144.6	-261.1	869.4	837.1	32.30	26.919	
7,100.0	6,935.3	6,960.0	6,891.9	19.4	18.1	116.36	-145.9	-262.2	928.1	894.7	33.41	27.784	
7,200.0	6,982.0	7,003.3	6,935.1	20.6	18.2	113.40	-147.1	-263.1	995.0	959.8	35.21	28.255	

Company:	Synergy Resources	Local Co-ordinate Reference:	Well SRC Kelly Farms A-4-3NHZ
Project:	SEC.4-T5N-R66W	TVD Reference:	WELL @ 4766.5ft (Ensign Rig #131 - RKB - 13.5')
Reference Site:	SRC Kelly Farms Pad Sec.4-T5N-R66W	MD Reference:	WELL @ 4766.5ft (Ensign Rig #131 - RKB - 13.5')
Site Error:	0.0ft	North Reference:	True
Reference Well:	SRC Kelly Farms A-4-3NHZ	Survey Calculation Method:	Minimum Curvature
Well Error:	0.0ft	Output errors are at	2.00 sigma
Reference Wellbore	Wellbore #1	Database:	Landmark
Reference Design:	Plan #2 (4-21-14)	Offset TVD Reference:	Offset Datum

Offset Design Northridge Pad Sec.4-T5N-R66W - Northridge 4AD (Exist.) - Wellbore #1 - Wellbore #1													Offset Site Error:	0.0ft
Survey Program: 182-MWD													Offset Well Error:	0.0ft
Reference		Offset		Semi Major Axis			Distance							Warning
Measured Depth (ft)	Vertical Depth (ft)	Measured Depth (ft)	Vertical Depth (ft)	Reference (ft)	Offset (ft)	Highside Toolface (°)	Offset Wellbore Centre +N/-S (ft)	+E/-W (ft)	Between Centres (ft)	Between Ellipses (ft)	Minimum Separation (ft)	Separation Factor		
0.0	0.0	0.0	0.0	0.0	0.0	95.65	-34.6	349.7	351.6					
100.0	100.0	88.2	88.2	0.1	0.1	95.64	-34.5	349.4	351.2	350.9	0.21	1,657.819		
200.0	200.0	189.6	189.6	0.3	0.2	95.62	-34.3	348.7	350.4	349.8	0.56	628.639		
242.2	242.2	229.1	229.1	0.4	0.3	94.39	-34.2	348.5	350.2	349.5	0.73	478.430		
300.0	300.0	284.2	284.2	0.6	0.4	94.58	-34.0	348.7	350.5	349.6	0.97	359.982		
400.0	399.8	389.4	389.4	0.8	0.6	95.51	-34.3	348.6	350.9	349.5	1.42	246.546		
500.0	499.5	491.6	491.6	1.0	0.9	96.98	-34.2	347.1	350.3	348.4	1.89	185.020		
528.7	528.0	519.3	519.2	1.1	0.9	97.42	-33.9	346.7	350.3	348.2	2.03	172.638		
600.0	598.9	589.6	589.6	1.3	1.1	98.52	-33.1	346.0	350.5	348.1	2.37	148.071		
700.0	698.3	689.7	689.7	1.6	1.3	100.36	-33.7	344.5	350.9	348.0	2.85	122.988		
800.0	797.8	792.5	792.5	1.9	1.5	102.30	-34.4	342.5	351.3	347.9	3.36	104.700		
855.1	852.5	847.6	847.5	2.0	1.6	103.28	-34.4	341.2	351.2	347.6	3.63	96.827		
900.0	897.2	891.9	891.8	2.2	1.7	104.04	-34.3	340.1	351.3	347.4	3.85	91.311		
1,000.0	996.6	1,003.9	1,003.7	2.5	1.9	105.88	-32.8	336.0	350.2	345.8	4.37	80.163		
1,100.0	1,096.1	1,120.0	1,119.3	2.7	2.2	107.86	-29.9	326.2	344.3	339.4	4.91	70.106		
1,200.0	1,195.5	1,223.6	1,222.3	3.0	2.5	109.30	-24.2	315.9	336.5	331.0	5.42	62.039		
1,300.0	1,294.9	1,335.5	1,333.2	3.3	2.8	110.89	-16.9	302.6	326.6	320.6	5.96	54.818		
1,400.0	1,394.4	1,446.6	1,442.4	3.6	3.2	112.40	-6.9	285.1	312.4	305.9	6.50	48.052		
1,500.0	1,493.8	1,547.2	1,540.8	3.9	3.5	113.81	3.6	267.4	296.1	289.1	7.01	42.236		
1,600.0	1,593.3	1,652.9	1,644.0	4.2	3.9	115.98	13.0	246.6	278.8	271.2	7.53	37.019		
1,700.0	1,692.7	1,756.0	1,744.0	4.5	4.4	118.29	23.8	224.1	259.2	251.2	8.06	32.167		
1,800.0	1,792.1	1,853.0	1,838.0	4.8	4.8	120.97	33.9	202.0	239.3	230.8	8.56	27.947		
1,900.0	1,891.6	1,951.4	1,933.3	5.1	5.2	124.11	44.2	179.8	220.1	211.0	9.07	24.264		
2,000.0	1,991.0	2,053.5	2,031.8	5.4	5.7	127.85	56.4	155.6	199.8	190.2	9.61	20.797		
2,100.0	2,090.4	2,154.5	2,128.5	5.7	6.3	132.31	70.1	130.3	178.4	168.2	10.18	17.527		
2,200.0	2,189.9	2,253.9	2,223.1	6.0	6.9	137.60	85.8	104.3	155.8	145.0	10.79	14.441		
2,300.0	2,289.3	2,349.6	2,314.0	6.3	7.4	144.63	100.9	78.4	134.3	122.8	11.46	11.713		
2,400.0	2,388.8	2,445.0	2,404.8	6.6	7.9	153.90	115.5	53.0	116.1	103.9	12.27	9.466		
2,500.0	2,488.2	2,542.6	2,497.7	6.9	8.5	166.27	130.5	26.9	102.1	88.8	13.31	7.673		
2,600.0	2,587.6	2,639.9	2,589.8	7.1	9.1	-178.51	147.5	0.8	92.1	77.5	14.58	6.316		
2,670.8	2,658.1	2,707.4	2,653.8	7.4	9.5	-166.54	159.4	-17.4	89.7	74.1	15.54	5.772 CC, ES		
2,700.0	2,687.1	2,734.9	2,679.8	7.4	9.7	-161.43	164.2	-25.1	90.1	74.2	15.92	5.661 SF		
2,800.0	2,786.5	2,829.0	2,768.2	7.7	10.3	-144.47	180.0	-52.9	98.7	81.6	17.07	5.783		
2,900.0	2,885.9	2,925.3	2,858.9	8.0	10.9	-131.00	195.5	-81.4	115.6	97.7	17.83	6.483		
3,000.0	2,985.4	3,021.2	2,950.3	8.3	11.5	-122.40	209.5	-107.0	135.3	116.9	18.37	7.367		
3,100.0	3,084.8	3,118.3	3,042.5	8.6	12.0	-115.80	223.8	-133.7	158.1	139.2	18.85	8.385		
3,200.0	3,184.3	3,216.3	3,135.7	8.9	12.6	-110.53	239.5	-159.7	181.0	161.7	19.30	9.377		
3,300.0	3,283.7	3,312.3	3,227.5	9.2	13.2	-107.26	252.7	-184.0	204.5	184.7	19.78	10.339		
3,400.0	3,383.1	3,411.0	3,322.6	9.5	13.7	-105.28	263.8	-208.4	228.4	208.1	20.30	11.250		
3,500.0	3,482.6	3,507.5	3,415.6	9.8	14.2	-103.76	274.5	-231.7	251.9	231.1	20.83	12.092		
3,600.0	3,582.0	3,608.9	3,513.6	10.1	14.7	-102.60	285.2	-255.5	275.1	253.7	21.39	12.862		
3,700.0	3,681.4	3,703.0	3,604.5	10.4	15.2	-101.54	295.9	-277.3	297.9	276.0	21.94	13.582		
3,800.0	3,780.9	3,797.2	3,695.0	10.7	15.7	-100.34	308.0	-300.4	321.9	299.4	22.49	14.316		
3,900.0	3,880.3	3,886.2	3,779.6	11.0	16.3	-98.74	322.7	-323.9	347.5	324.5	23.01	15.100		
4,000.0	3,979.7	3,975.9	3,863.9	11.3	16.9	-96.95	339.6	-349.5	375.3	351.7	23.54	15.944		
4,100.0	4,079.2	4,067.7	3,949.6	11.6	17.5	-95.22	357.8	-376.8	404.6	380.5	24.07	16.807		
4,200.0	4,178.6	4,172.7	4,048.1	11.9	18.2	-93.70	377.3	-407.5	433.7	409.0	24.64	17.597		
4,300.0	4,278.1	4,274.0	4,144.5	12.2	18.8	-92.89	392.7	-434.6	460.5	435.2	25.22	18.255		
4,400.0	4,377.5	4,356.3	4,222.6	12.5	19.3	-92.35	404.8	-457.3	488.2	462.5	25.77	18.946		
4,500.0	4,476.9	4,461.0	4,321.4	12.7	20.0	-91.48	422.3	-487.4	517.2	490.9	26.37	19.614		
4,600.0	4,576.4	4,547.5	4,402.9	13.0	20.6	-90.72	437.8	-511.9	545.9	519.0	26.92	20.280		

CC - Min centre to center distance or convergent point, SF - min separation factor, ES - min ellipse separation

Company:	Synergy Resources	Local Co-ordinate Reference:	Well SRC Kelly Farms A-4-3NHZ
Project:	SEC.4-T5N-R66W	TVD Reference:	WELL @ 4766.5ft (Ensign Rig #131 - RKB - 13.5')
Reference Site:	SRC Kelly Farms Pad Sec.4-T5N-R66W	MD Reference:	WELL @ 4766.5ft (Ensign Rig #131 - RKB - 13.5')
Site Error:	0.0ft	North Reference:	True
Reference Well:	SRC Kelly Farms A-4-3NHZ	Survey Calculation Method:	Minimum Curvature
Well Error:	0.0ft	Output errors are at	2.00 sigma
Reference Wellbore	Wellbore #1	Database:	Landmark
Reference Design:	Plan #2 (4-21-14)	Offset TVD Reference:	Offset Datum

Offset Design Northridge Pad Sec.4-T5N-R66W - Northridge 4AD (Exist.) - Wellbore #1 - Wellbore #1													Offset Site Error: 0.0 ft	
Survey Program: 182-MWD													Offset Well Error: 0.0 ft	
Reference		Offset		Semi Major Axis			Distance							Warning
Measured Depth	Vertical Depth	Measured Depth	Vertical Depth	Reference	Offset	Highside Toolface	Offset Wellbore Centre		Between Centres	Between Ellipses	Minimum Separation	Separation Factor		
(ft)	(ft)	(ft)	(ft)	(ft)	(ft)	(°)	+N/-S (ft)	+E/-W (ft)	(ft)	(ft)	(ft)			
4,700.0	4,675.8	4,623.5	4,473.8	13.3	21.1	-90.08	451.7	-535.2	577.1	549.6	27.45	21.027		
4,800.0	4,775.2	4,734.3	4,577.0	13.6	21.9	-89.33	471.1	-570.7	609.7	581.6	28.09	21.706		
4,900.0	4,874.7	4,836.2	4,672.7	13.9	22.6	-88.60	490.2	-600.4	639.4	610.7	28.68	22.292		
5,000.0	4,974.2	4,944.0	4,774.5	14.2	23.3	-88.41	508.6	-630.4	667.9	638.6	29.33	22.768		
5,100.0	5,074.0	5,045.8	4,871.0	14.4	23.9	-88.10	526.0	-657.7	695.6	665.7	29.87	23.291		
5,200.0	5,174.0	5,162.2	4,982.4	14.5	24.6	-87.56	543.6	-686.5	721.2	690.8	30.34	23.767		
5,300.0	5,274.0	5,309.3	5,125.1	14.7	25.3	-85.36	559.4	-718.0	743.8	707.9	35.84	20.754		
5,400.0	5,374.0	5,417.8	5,231.7	14.9	25.7	-84.76	568.7	-736.5	761.6	725.0	36.53	20.847		
5,500.0	5,474.0	5,558.6	5,370.8	15.0	26.2	-84.28	577.1	-755.9	775.9	738.7	37.25	20.828		
5,600.0	5,574.0	5,691.5	5,503.1	15.2	26.5	-83.99	582.2	-767.6	785.0	747.2	37.82	20.756		
5,700.0	5,674.0	5,795.7	5,607.0	15.4	26.7	-83.67	587.4	-774.7	792.3	754.0	38.29	20.692		
5,800.0	5,774.0	5,917.8	5,728.8	15.6	26.9	-83.44	591.3	-780.6	797.4	758.7	38.75	20.578		
5,900.0	5,874.0	6,017.2	5,828.2	15.8	27.1	-83.34	593.0	-784.0	801.1	762.0	39.13	20.471		
6,000.0	5,974.0	6,115.2	5,926.1	15.9	27.2	-83.33	593.7	-788.2	805.4	765.9	39.50	20.389		
6,100.0	6,074.0	6,218.7	6,029.5	16.1	27.4	-83.32	594.4	-792.4	809.5	769.6	39.89	20.295		
6,200.0	6,174.0	6,319.9	6,130.6	16.3	27.5	-83.34	594.5	-796.2	813.2	773.0	40.25	20.203		
6,300.0	6,274.0	6,427.4	6,238.0	16.5	27.7	-173.43	593.5	-800.0	817.5	783.3	34.13	23.955		
6,400.0	6,373.3	6,537.3	6,347.9	16.6	27.8	-173.55	591.9	-802.3	830.0	796.2	33.77	24.578		
6,500.0	6,470.7	6,625.7	6,436.2	16.8	27.9	-173.60	590.8	-804.2	854.4	821.5	32.95	25.932		
6,600.0	6,564.5	6,715.1	6,525.6	17.0	28.0	-173.58	590.4	-806.8	891.3	859.6	31.72	28.098		
6,700.0	6,653.5	6,809.0	6,619.5	17.3	28.2	-173.60	589.2	-809.2	938.9	908.7	30.15	31.142		
6,800.0	6,736.2	6,893.4	6,703.9	17.5	28.3	-173.57	587.4	-811.1	996.3	968.1	28.25	35.273		

Company:	Synergy Resources	Local Co-ordinate Reference:	Well SRC Kelly Farms A-4-3NHZ
Project:	SEC.4-T5N-R66W	TVD Reference:	WELL @ 4766.5ft (Ensign Rig #131 - RKB - 13.5')
Reference Site:	SRC Kelly Farms Pad Sec.4-T5N-R66W	MD Reference:	WELL @ 4766.5ft (Ensign Rig #131 - RKB - 13.5')
Site Error:	0.0ft	North Reference:	True
Reference Well:	SRC Kelly Farms A-4-3NHZ	Survey Calculation Method:	Minimum Curvature
Well Error:	0.0ft	Output errors are at	2.00 sigma
Reference Wellbore	Wellbore #1	Database:	Landmark
Reference Design:	Plan #2 (4-21-14)	Offset TVD Reference:	Offset Datum

Offset Design Northridge Pad Sec.4-T5N-R66W - Northridge 4KD (Exist.) - Wellbore #1 - Wellbore #1														Offset Site Error:	0.0 ft
Survey Program: 124-MWD														Offset Well Error:	0.0 ft
Reference	Offset	Semi Major Axis		Distance		Warning									
Measured Depth (ft)	Vertical Depth (ft)	Measured Depth (ft)	Vertical Depth (ft)	Reference (ft)	Offset (ft)	Highside Toolface (°)	Offset Wellbore Centre +N/-S (ft)	+E/-W (ft)	Between Centres (ft)	Between Ellipses (ft)	Minimum Separation (ft)	Separation Factor			
0.0	0.0	0.0	0.0	0.0	0.0	101.30	-66.3	331.8	338.6						
100.0	100.0	90.5	90.5	0.1	0.1	101.24	-65.9	331.5	338.0	337.8	0.21	1,572.776			
200.0	200.0	193.3	193.3	0.3	0.3	101.11	-64.9	330.3	336.7	336.0	0.63	535.589			
300.0	300.0	299.2	299.2	0.6	0.5	100.17	-64.1	327.8	334.5	333.4	1.09	308.084			
400.0	399.8	404.0	403.8	0.8	0.8	101.32	-64.1	323.3	331.3	329.7	1.55	213.604			
500.0	499.5	524.1	523.4	1.0	1.2	103.97	-65.9	312.6	324.8	322.7	2.10	154.581			
600.0	598.9	631.5	629.7	1.3	1.7	107.36	-69.5	297.0	314.5	311.8	2.70	116.536			
700.0	698.3	729.4	726.0	1.6	2.2	111.23	-75.4	280.9	304.4	301.0	3.35	90.979			
800.0	797.8	823.8	818.8	1.9	2.7	115.52	-82.9	265.1	296.4	292.3	4.08	72.717			
900.0	897.2	924.7	917.1	2.2	3.3	121.18	-94.7	245.8	290.1	285.1	5.00	57.965			
1,000.0	996.6	1,025.1	1,014.2	2.5	4.1	127.47	-107.2	223.6	284.9	278.8	6.06	46.974			
1,095.1	1,091.2	1,113.6	1,099.3	2.7	4.8	133.51	-119.3	202.5	282.7	275.6	7.10	39.810 CC			
1,100.0	1,096.1	1,118.0	1,103.5	2.7	4.8	133.82	-119.9	201.4	282.7	275.6	7.16	39.507 ES			
1,200.0	1,195.5	1,206.9	1,188.6	3.0	5.6	140.22	-134.1	179.7	285.9	277.7	8.26	34.607			
1,300.0	1,294.9	1,297.6	1,274.8	3.3	6.4	146.85	-150.8	157.1	295.2	285.9	9.35	31.580			
1,400.0	1,394.4	1,397.8	1,370.1	3.6	7.1	153.71	-167.5	131.1	307.0	296.7	10.32	29.759			
1,500.0	1,493.8	1,486.0	1,454.3	3.9	7.7	159.10	-182.1	109.3	323.0	311.9	11.09	29.139			
1,600.0	1,593.3	1,578.1	1,542.1	4.2	8.5	164.25	-198.0	86.6	342.8	330.9	11.89	28.822 SF			
1,700.0	1,692.7	1,670.3	1,630.1	4.5	9.2	168.79	-214.1	64.3	365.6	352.9	12.62	28.972			
1,800.0	1,792.1	1,763.2	1,718.8	4.8	10.0	172.88	-230.4	41.7	390.5	377.2	13.30	29.358			
1,900.0	1,891.6	1,859.0	1,809.9	5.1	10.8	176.75	-247.1	17.3	417.1	403.0	14.02	29.739			
2,000.0	1,991.0	1,958.1	1,904.0	5.4	11.7	-179.50	-262.8	-9.5	443.9	429.2	14.68	30.241			
2,100.0	2,090.4	2,050.1	1,991.7	5.7	12.4	-176.57	-277.1	-33.1	471.7	456.4	15.25	30.940			
2,200.0	2,189.9	2,139.0	2,076.3	6.0	13.1	-174.03	-291.6	-56.1	501.4	485.6	15.80	31.723			
2,300.0	2,289.3	2,234.8	2,167.9	6.3	13.9	-171.68	-307.0	-80.0	531.6	515.2	16.37	32.481			
2,400.0	2,388.8	2,319.9	2,249.1	6.6	14.5	-169.91	-321.8	-100.4	563.5	546.6	16.86	33.416			
2,500.0	2,488.2	2,431.8	2,356.1	6.9	15.4	-167.74	-339.7	-127.9	594.8	577.3	17.45	34.089			
2,600.0	2,587.6	2,528.0	2,448.3	7.1	16.1	-165.97	-352.7	-152.1	624.4	606.5	17.96	34.762			
2,700.0	2,687.1	2,609.2	2,526.2	7.4	16.7	-164.75	-365.3	-171.3	656.0	637.5	18.46	35.536			
2,800.0	2,786.5	2,702.8	2,615.7	7.7	17.5	-163.43	-380.6	-194.0	688.8	669.8	19.01	36.225			
2,900.0	2,885.9	2,801.4	2,709.7	8.0	18.3	-161.93	-394.7	-220.3	720.9	701.3	19.61	36.771			
3,000.0	2,985.4	2,884.5	2,788.5	8.3	19.1	-160.68	-407.1	-243.7	754.5	734.3	20.15	37.436			
3,100.0	3,084.8	2,989.3	2,888.1	8.6	20.0	-159.24	-421.4	-272.8	787.2	766.4	20.76	37.924			
3,200.0	3,184.3	3,057.5	2,952.5	8.9	20.6	-158.31	-431.4	-292.8	821.7	800.5	21.24	38.691			
3,300.0	3,283.7	3,150.5	3,039.9	9.2	21.5	-157.09	-445.9	-321.1	857.9	836.0	21.84	39.279			
3,400.0	3,383.1	3,270.8	3,153.7	9.5	22.5	-155.66	-462.3	-356.5	892.1	869.6	22.48	39.678			
3,500.0	3,482.6	3,347.8	3,226.6	9.8	23.2	-154.83	-472.8	-378.9	926.6	903.6	22.99	40.299			
3,600.0	3,582.0	3,421.1	3,295.7	10.1	23.9	-154.11	-484.1	-400.6	963.0	939.5	23.51	40.959			
3,700.0	3,681.4	3,549.0	3,416.6	10.4	25.1	-153.00	-503.7	-437.4	999.3	975.1	24.19	41.311			

Company:	Synergy Resources	Local Co-ordinate Reference:	Well SRC Kelly Farms A-4-3NHZ
Project:	SEC.4-T5N-R66W	TVD Reference:	WELL @ 4766.5ft (Ensign Rig #131 - RKB - 13.5')
Reference Site:	SRC Kelly Farms Pad Sec.4-T5N-R66W	MD Reference:	WELL @ 4766.5ft (Ensign Rig #131 - RKB - 13.5')
Site Error:	0.0ft	North Reference:	True
Reference Well:	SRC Kelly Farms A-4-3NHZ	Survey Calculation Method:	Minimum Curvature
Well Error:	0.0ft	Output errors are at	2.00 sigma
Reference Wellbore	Wellbore #1	Database:	Landmark
Reference Design:	Plan #2 (4-21-14)	Offset TVD Reference:	Offset Datum

Offset Design		Northridge Pad Sec.4-T5N-R66W - Northridge 4ND (Exist.) - Northridge 4ND - Northridge 4ND											Offset Site Error: 0.0 ft	
Survey Program: 0-MWD													Offset Well Error: 0.0 ft	
Reference		Offset		Semi Major Axis		Distance								Warning
Measured Depth (ft)	Vertical Depth (ft)	Measured Depth (ft)	Vertical Depth (ft)	Reference (ft)	Offset (ft)	Highside Toolface (°)	Offset Wellbore Centre +N/-S (ft)	+E/-W (ft)	Between Centres (ft)	Between Ellipses (ft)	Minimum Separation (ft)	Separation Factor		
0.0	0.0	0.0	0.0	0.0	0.0	79.25	78.7	414.5	422.1					
100.0	100.0	86.5	86.5	0.1	0.1	79.25	78.7	414.5	421.9	421.7	0.21	2,012.815		
200.0	200.0	186.5	186.5	0.3	0.3	79.25	78.7	414.5	421.9	421.3	0.64	655.215		
300.0	300.0	286.5	286.5	0.6	0.5	78.23	78.7	414.5	421.6	420.5	1.09	385.514		
400.0	399.8	386.3	386.3	0.8	0.8	78.95	78.7	414.5	420.5	419.0	1.55	271.452		
500.0	499.5	486.0	486.0	1.0	1.0	80.14	78.7	414.5	418.9	416.9	2.02	207.056		
600.0	598.9	585.4	585.4	1.3	1.2	81.57	78.7	414.5	417.3	414.7	2.52	165.816		
700.0	698.3	684.8	684.8	1.6	1.4	83.01	78.7	414.5	415.8	412.8	3.02	137.735		
800.0	797.8	784.3	784.3	1.9	1.7	84.45	78.7	414.5	414.7	411.1	3.53	117.572		
900.0	897.2	883.7	883.7	2.2	1.9	85.90	78.7	414.5	413.8	409.7	4.04	102.472		
1,000.0	996.6	983.1	983.1	2.5	2.1	87.36	78.7	414.5	413.1	408.6	4.55	90.784		
1,100.0	1,096.1	1,082.6	1,082.6	2.7	2.3	88.82	78.7	414.5	412.8	407.7	5.06	81.499		
1,180.5	1,176.1	1,162.6	1,162.6	3.0	2.5	90.00	78.7	414.5	412.7	407.2	5.48	75.320		
1,200.0	1,195.5	1,182.0	1,182.0	3.0	2.5	90.29	78.7	414.5	412.7	407.1	5.58	73.966		
1,300.0	1,294.9	1,281.4	1,281.4	3.3	2.8	91.75	78.7	414.5	412.9	406.8	6.09	67.748		
1,400.0	1,394.4	1,380.9	1,380.9	3.6	3.0	93.21	78.7	414.5	413.3	406.7	6.61	62.542		
1,500.0	1,493.8	1,480.3	1,480.3	3.9	3.2	94.66	78.7	414.5	414.1	407.0	7.12	58.131		
1,600.0	1,593.3	1,579.8	1,579.8	4.2	3.4	96.11	78.7	414.5	415.1	407.4	7.64	54.355		
1,700.0	1,692.7	1,679.2	1,679.2	4.5	3.7	97.56	78.7	414.5	416.3	408.2	8.15	51.094		
1,800.0	1,792.1	1,778.6	1,778.6	4.8	3.9	98.99	78.7	414.5	417.9	409.2	8.66	48.256		
1,900.0	1,891.6	1,878.1	1,878.1	5.1	4.1	100.41	78.7	414.5	419.7	410.5	9.17	45.770		
2,000.0	1,991.0	1,977.5	1,977.5	5.4	4.3	101.82	78.7	414.5	421.7	412.1	9.68	43.580		
2,100.0	2,090.4	2,081.5	2,081.5	5.7	4.6	103.13	79.8	414.4	423.6	413.4	10.19	41.559		
2,200.0	2,189.9	2,187.4	2,187.3	6.0	4.8	103.99	84.8	413.7	424.3	413.6	10.71	39.604		
2,300.0	2,289.3	2,293.6	2,293.1	6.3	5.0	104.36	93.6	412.5	423.6	412.3	11.24	37.687		
2,400.0	2,388.8	2,399.8	2,398.5	6.6	5.3	104.24	106.3	410.7	421.4	409.6	11.78	35.784		
2,500.0	2,488.2	2,505.7	2,503.1	6.9	5.6	103.63	122.8	408.4	417.7	405.4	12.33	33.879		
2,600.0	2,587.6	2,611.1	2,606.5	7.1	5.8	102.51	143.0	405.6	412.8	399.9	12.91	31.970		
2,700.0	2,687.1	2,713.8	2,706.5	7.4	6.1	100.92	166.1	402.4	406.8	393.2	13.52	30.088		
2,800.0	2,786.5	2,812.9	2,802.9	7.7	6.5	99.25	189.2	399.2	400.8	386.7	14.14	28.343		
2,900.0	2,885.9	2,912.1	2,899.2	8.0	6.8	97.53	212.2	396.0	395.2	380.4	14.78	26.732		
3,000.0	2,985.4	3,011.2	2,995.5	8.3	7.2	95.76	235.3	392.8	390.0	374.5	15.44	25.250		
3,100.0	3,084.8	3,110.3	3,091.9	8.6	7.6	93.94	258.3	389.6	385.1	369.0	16.12	23.890		
3,200.0	3,184.3	3,209.4	3,188.2	8.9	7.9	92.08	281.3	386.4	380.7	363.9	16.81	22.647		
3,300.0	3,283.7	3,308.5	3,284.6	9.2	8.3	90.18	304.4	383.2	376.7	359.2	17.51	21.512		
3,400.0	3,383.1	3,407.6	3,380.9	9.5	8.7	88.24	327.4	380.0	373.1	354.9	18.22	20.480		
3,500.0	3,482.6	3,506.7	3,477.3	9.8	9.2	86.26	350.5	376.8	369.9	351.0	18.93	19.544		
3,600.0	3,582.0	3,605.9	3,573.6	10.1	9.6	84.26	373.5	373.6	367.2	347.6	19.64	18.696		
3,700.0	3,681.4	3,705.0	3,670.0	10.4	10.0	82.23	396.6	370.4	365.0	344.6	20.36	17.931		
3,800.0	3,780.9	3,804.1	3,766.3	10.7	10.4	80.17	419.6	367.2	363.2	342.2	21.07	17.242		
3,900.0	3,880.3	3,903.2	3,862.7	11.0	10.9	78.10	442.6	364.0	362.0	340.2	21.77	16.625		
4,000.0	3,979.7	4,002.3	3,959.0	11.3	11.3	76.02	465.7	360.8	361.2	338.7	22.47	16.072		
4,100.0	4,079.2	4,101.4	4,055.3	11.6	11.8	73.93	488.7	357.6	360.8	337.7	23.16	15.581		
4,113.7	4,092.8	4,115.0	4,068.5	11.6	11.8	73.65	491.9	357.1	360.8	337.6	23.25	15.518		
4,200.0	4,178.6	4,200.5	4,151.7	11.9	12.2	71.84	511.8	354.4	361.0	337.2	23.84	15.145		
4,300.0	4,278.1	4,299.7	4,248.0	12.2	12.6	69.76	534.8	351.2	361.7	337.2	24.50	14.761		
4,400.0	4,377.5	4,398.8	4,344.4	12.5	13.1	67.68	557.9	348.0	362.8	337.7	25.15	14.424		
4,500.0	4,476.9	4,497.9	4,440.7	12.7	13.6	65.63	580.9	344.8	364.5	338.7	25.79	14.132		
4,600.0	4,576.4	4,597.0	4,537.1	13.0	14.0	63.59	603.9	341.6	366.6	340.2	26.41	13.880		
4,700.0	4,675.8	4,696.1	4,633.4	13.3	14.5	61.58	627.0	338.4	369.1	342.1	27.02	13.664		
4,800.0	4,775.2	4,795.2	4,729.8	13.6	14.9	59.59	650.0	335.2	372.2	344.6	27.60	13.483		

CC - Min centre to center distance or convergent point, SF - min separation factor, ES - min ellipse separation

Company:	Synergy Resources	Local Co-ordinate Reference:	Well SRC Kelly Farms A-4-3NHZ
Project:	SEC.4-T5N-R66W	TVD Reference:	WELL @ 4766.5ft (Ensign Rig #131 - RKB - 13.5')
Reference Site:	SRC Kelly Farms Pad Sec.4-T5N-R66W	MD Reference:	WELL @ 4766.5ft (Ensign Rig #131 - RKB - 13.5')
Site Error:	0.0ft	North Reference:	True
Reference Well:	SRC Kelly Farms A-4-3NHZ	Survey Calculation Method:	Minimum Curvature
Well Error:	0.0ft	Output errors are at	2.00 sigma
Reference Wellbore	Wellbore #1	Database:	Landmark
Reference Design:	Plan #2 (4-21-14)	Offset TVD Reference:	Offset Datum

Offset Design Northridge Pad Sec.4-T5N-R66W - Northridge 4ND (Exist.) - Northridge 4ND - Northridge 4ND												Offset Site Error: 0.0 ft		
Survey Program: 0-MWD												Offset Well Error: 0.0 ft		
Reference		Offset		Semi Major Axis			Distance							Warning
Measured Depth	Vertical Depth	Measured Depth	Vertical Depth	Reference	Offset	Highside Toolface	Offset Wellbore Centre		Between Centres	Between Ellipses	Minimum Separation	Separation Factor		
(ft)	(ft)	(ft)	(ft)	(ft)	(ft)	(°)	+N/-S (ft)	+E/-W (ft)	(ft)	(ft)	(ft)			
4,900.0	4,874.7	4,894.3	4,826.1	13.9	15.4	57.64	673.1	332.0	375.6	347.5	28.18	13.333		
5,000.0	4,974.2	4,999.2	4,928.4	14.2	15.8	55.79	695.6	328.8	379.4	350.8	28.62	13.257		
5,100.0	5,074.0	5,104.6	5,032.1	14.4	16.1	54.06	714.6	326.2	383.9	354.9	28.96	13.256		
5,200.0	5,174.0	5,210.5	5,136.9	14.5	16.4	52.45	729.8	324.1	389.0	359.8	29.23	13.309		
5,300.0	5,274.0	5,317.1	5,242.8	14.7	16.7	52.27	741.2	322.5	394.3	367.6	26.65	14.793		
5,400.0	5,374.0	5,424.3	5,349.8	14.9	16.9	51.32	748.8	321.5	397.9	370.7	27.16	14.650		
5,500.0	5,474.0	5,532.0	5,457.4	15.0	17.1	50.87	752.4	321.0	399.6	372.0	27.59	14.486		
5,600.0	5,574.0	5,635.1	5,560.5	15.2	17.2	50.83	752.7	320.9	399.7	371.8	27.96	14.297		
5,700.0	5,674.0	5,735.1	5,660.5	15.4	17.4	50.83	752.7	320.9	399.7	371.4	28.34	14.103		
5,800.0	5,774.0	5,835.1	5,760.5	15.6	17.5	50.83	752.7	320.9	399.7	371.0	28.73	13.914		
5,900.0	5,874.0	5,935.1	5,860.5	15.8	17.7	50.83	752.7	320.9	399.7	370.6	29.12	13.730		
6,000.0	5,974.0	6,035.1	5,960.5	15.9	17.8	50.83	752.7	320.9	399.7	370.2	29.50	13.549		
6,100.0	6,074.0	6,135.1	6,060.5	16.1	18.0	50.83	752.7	320.9	399.7	369.8	29.89	13.372		
6,200.0	6,174.0	6,235.1	6,160.5	16.3	18.2	50.83	752.7	320.9	399.7	369.5	30.29	13.199		
6,300.0	6,274.0	6,335.1	6,260.5	16.5	18.3	-39.27	752.7	320.9	399.1	366.1	32.98	12.101		
6,400.0	6,373.3	6,434.4	6,359.8	16.6	18.5	-40.63	752.7	320.9	390.9	357.8	33.04	11.831		
6,500.0	6,470.7	6,531.8	6,457.2	16.8	18.6	-43.70	752.7	320.9	373.8	341.1	32.70	11.434		
6,600.0	6,564.5	6,625.6	6,551.0	17.0	18.8	-48.79	752.7	320.9	349.3	317.1	32.10	10.879		
6,700.0	6,653.5	6,714.6	6,640.0	17.3	18.9	-56.29	752.7	320.9	319.5	287.9	31.55	10.126		
6,800.0	6,736.2	6,797.3	6,722.7	17.5	19.1	-66.34	752.7	320.9	288.5	257.1	31.45	9.176		
6,900.0	6,811.5	6,872.6	6,798.0	17.9	19.2	-78.22	752.7	320.9	263.1	231.1	31.99	8.223		
6,999.4	6,877.8	6,938.9	6,864.3	18.5	19.3	-90.00	752.7	320.9	252.5	219.6	32.85	7.686 CC		
7,000.0	6,878.2	6,939.3	6,864.7	18.5	19.3	-90.06	752.7	320.9	252.5	219.6	32.85	7.685 ES, SF		
7,100.0	6,935.3	6,996.4	6,921.8	19.4	19.4	-99.65	752.7	320.9	265.6	232.0	33.58	7.908		
7,200.0	6,982.0	7,043.1	6,968.5	20.6	19.5	-105.60	752.7	320.9	304.8	270.5	34.29	8.890		
7,300.0	7,017.7	7,078.8	7,004.2	22.1	19.6	-107.35	752.7	320.9	365.4	329.9	35.48	10.298		
7,400.0	7,041.6	7,102.7	7,028.1	23.8	19.6	-104.45	752.7	320.9	440.7	403.0	37.66	11.701		
7,500.0	7,053.6	7,114.7	7,040.1	25.8	19.6	-96.13	752.7	320.9	525.1	484.3	40.79	12.874		
7,600.0	7,055.0	7,116.1	7,041.5	27.9	19.6	-90.00	752.7	320.9	614.6	571.2	43.42	14.155		
7,700.0	7,055.0	7,116.1	7,041.5	30.1	19.6	-90.00	752.7	320.9	707.1	661.4	45.69	15.474		
7,800.0	7,055.0	7,116.1	7,041.5	32.5	19.6	-90.00	752.7	320.9	801.3	753.2	48.05	16.676		
7,900.0	7,055.0	7,116.1	7,041.5	34.8	19.6	-90.00	752.7	320.9	896.8	846.3	50.47	17.767		
8,000.0	7,055.0	7,116.1	7,041.5	37.3	19.6	-90.00	752.7	320.9	993.2	940.2	52.95	18.755		

Company:	Synergy Resources	Local Co-ordinate Reference:	Well SRC Kelly Farms A-4-3NHZ
Project:	SEC.4-T5N-R66W	TVD Reference:	WELL @ 4766.5ft (Ensign Rig #131 - RKB - 13.5')
Reference Site:	SRC Kelly Farms Pad Sec.4-T5N-R66W	MD Reference:	WELL @ 4766.5ft (Ensign Rig #131 - RKB - 13.5')
Site Error:	0.0ft	North Reference:	True
Reference Well:	SRC Kelly Farms A-4-3NHZ	Survey Calculation Method:	Minimum Curvature
Well Error:	0.0ft	Output errors are at	2.00 sigma
Reference Wellbore	Wellbore #1	Database:	Landmark
Reference Design:	Plan #2 (4-21-14)	Offset TVD Reference:	Offset Datum

Offset Design													Offset Site Error:	0.0ft
Survey Program: 0-MWD													Offset Well Error:	0.0ft
Reference		Offset		Semi Major Axis			Distance							Warning
Measured Depth (ft)	Vertical Depth (ft)	Measured Depth (ft)	Vertical Depth (ft)	Reference (ft)	Offset (ft)	Highside Toolface (°)	Offset Wellbore Centre +N/-S (ft)	+E/-W (ft)	Between Centres (ft)	Between Ellipses (ft)	Minimum Separation (ft)	Separation Factor		
0.0	0.0	1.0	1.0	0.0	0.0	168.66	-22.2	4.5	22.7	22.7	0.00	N/A		
100.0	100.0	101.0	101.0	0.1	0.1	168.66	-22.2	4.5	22.7	22.4	0.23	99.805		
200.0	200.0	201.0	201.0	0.3	0.3	168.66	-22.2	4.5	22.7	22.0	0.68	33.489 CC, ES		
300.0	300.0	301.0	301.0	0.6	0.6	168.29	-22.2	4.5	24.4	23.2	1.13	21.490		
400.0	399.8	400.8	400.8	0.8	0.8	170.34	-22.2	4.5	29.5	27.9	1.60	18.496		
500.0	499.5	500.5	500.5	1.0	1.0	172.51	-22.2	4.5	38.1	36.1	2.06	18.532		
600.0	598.9	599.9	599.9	1.3	1.2	174.14	-22.2	4.5	48.6	46.1	2.51	19.412		
700.0	698.3	697.3	697.3	1.6	1.4	174.82	-23.8	4.9	60.8	57.9	2.93	20.734		
800.0	797.8	793.9	793.7	1.9	1.6	174.72	-28.5	6.3	76.3	73.0	3.36	22.743		
900.0	897.2	891.1	890.6	2.2	1.8	174.29	-35.9	8.4	94.5	90.7	3.79	24.958		
1,000.0	996.6	989.3	988.6	2.5	2.0	173.97	-43.6	10.7	113.0	108.8	4.21	26.825		
1,100.0	1,096.1	1,087.6	1,086.5	2.7	2.3	173.74	-51.3	13.0	131.5	126.9	4.65	28.309		
1,200.0	1,195.5	1,185.9	1,184.4	3.0	2.5	173.56	-59.1	15.2	150.0	144.9	5.08	29.509		
1,300.0	1,294.9	1,284.2	1,282.4	3.3	2.7	173.42	-66.8	17.5	168.5	163.0	5.53	30.495		
1,400.0	1,394.4	1,382.4	1,380.3	3.6	3.0	173.31	-74.6	19.8	187.0	181.0	5.97	31.319		
1,500.0	1,493.8	1,480.7	1,478.3	3.9	3.2	173.22	-82.3	22.0	205.5	199.1	6.42	32.015		
1,600.0	1,593.3	1,579.0	1,576.2	4.2	3.5	173.15	-90.0	24.3	224.0	217.1	6.87	32.607		
1,700.0	1,692.7	1,677.3	1,674.2	4.5	3.8	173.09	-97.8	26.5	242.5	235.2	7.32	33.123		
1,800.0	1,792.1	1,775.5	1,772.1	4.8	4.0	173.03	-105.5	28.8	261.0	253.2	7.77	33.572		
1,900.0	1,891.6	1,873.8	1,870.0	5.1	4.3	172.98	-113.2	31.1	279.5	271.3	8.23	33.966		
2,000.0	1,991.0	1,972.1	1,968.0	5.4	4.5	172.94	-121.0	33.3	298.0	289.3	8.68	34.315		
2,100.0	2,090.4	2,070.3	2,065.9	5.7	4.8	172.91	-128.7	35.6	316.5	307.4	9.14	34.626		
2,200.0	2,189.9	2,168.6	2,163.9	6.0	5.1	172.87	-136.5	37.9	335.0	325.4	9.60	34.904		
2,300.0	2,289.3	2,266.9	2,261.8	6.3	5.3	172.84	-144.2	40.1	353.5	343.5	10.06	35.155		
2,400.0	2,388.8	2,365.2	2,359.7	6.6	5.6	172.82	-151.9	42.4	372.0	361.5	10.51	35.383		
2,500.0	2,488.2	2,463.4	2,457.7	6.9	5.9	172.79	-159.7	44.6	390.5	379.5	10.97	35.589		
2,600.0	2,587.6	2,561.7	2,555.6	7.1	6.1	172.77	-167.4	46.9	409.0	397.6	11.43	35.778		
2,700.0	2,687.1	2,660.0	2,653.6	7.4	6.4	172.75	-175.1	49.2	427.5	415.6	11.89	35.951		
2,800.0	2,786.5	2,758.3	2,751.5	7.7	6.7	172.73	-182.9	51.4	446.0	433.7	12.35	36.110		
2,900.0	2,885.9	2,872.6	2,865.6	8.0	6.9	172.75	-190.2	53.6	463.1	450.2	12.81	36.135		
3,000.0	2,985.4	2,990.8	2,983.7	8.3	7.1	172.88	-193.2	54.4	476.2	462.9	13.28	35.845		
3,100.0	3,084.8	3,092.9	3,085.8	8.6	7.3	173.04	-193.2	54.5	486.7	473.0	13.72	35.466		
3,200.0	3,184.3	3,192.3	3,185.3	8.9	7.5	173.18	-193.2	54.5	497.2	483.1	14.15	35.143		
3,300.0	3,283.7	3,291.7	3,284.7	9.2	7.7	173.33	-193.2	54.5	507.7	493.2	14.58	34.836		
3,400.0	3,383.1	3,391.2	3,384.1	9.5	7.8	173.46	-193.2	54.5	518.3	503.3	15.00	34.543		
3,500.0	3,482.6	3,490.6	3,483.6	9.8	8.0	173.59	-193.2	54.5	528.8	513.4	15.43	34.262		
3,600.0	3,582.0	3,590.1	3,583.0	10.1	8.2	173.72	-193.2	54.5	539.3	523.5	15.87	33.993		
3,700.0	3,681.4	3,689.5	3,682.4	10.4	8.4	173.84	-193.2	54.5	549.9	533.6	16.30	33.735		
3,800.0	3,780.9	3,788.9	3,781.9	10.7	8.6	173.95	-193.2	54.5	560.4	543.7	16.73	33.489		
3,900.0	3,880.3	3,888.4	3,881.3	11.0	8.7	174.07	-193.2	54.5	570.9	553.8	17.17	33.252		
4,000.0	3,979.7	3,987.8	3,980.7	11.3	8.9	174.17	-193.2	54.5	581.5	563.9	17.61	33.025		
4,100.0	4,079.2	4,087.2	4,080.2	11.6	9.1	174.28	-193.2	54.5	592.0	574.0	18.05	32.807		
4,200.0	4,178.6	4,186.7	4,179.6	11.9	9.3	174.38	-193.2	54.5	602.6	584.1	18.49	32.598		
4,300.0	4,278.1	4,286.1	4,279.1	12.2	9.5	174.48	-193.2	54.5	613.1	594.2	18.93	32.396		
4,400.0	4,377.5	4,385.6	4,378.5	12.5	9.7	174.57	-193.2	54.5	623.7	604.3	19.37	32.203		
4,500.0	4,476.9	4,485.0	4,477.9	12.7	9.9	174.66	-193.2	54.5	634.2	614.4	19.81	32.017		
4,600.0	4,576.4	4,584.4	4,577.4	13.0	10.1	174.75	-193.2	54.5	644.8	624.5	20.25	31.838		
4,700.0	4,675.8	4,683.9	4,676.8	13.3	10.3	174.83	-193.2	54.5	655.3	634.6	20.70	31.665		
4,800.0	4,775.2	4,783.3	4,776.2	13.6	10.5	174.92	-193.2	54.5	665.9	644.7	21.14	31.499		
4,900.0	4,874.7	4,882.7	4,875.7	13.9	10.7	174.99	-193.2	54.5	676.4	654.8	21.58	31.339		
5,000.0	4,974.2	4,982.3	4,975.2	14.2	10.9	175.08	-193.2	54.5	685.9	663.9	22.03	31.131		

CC - Min centre to center distance or convergent point, SF - min separation factor, ES - min ellipse separation

Company:	Synergy Resources	Local Co-ordinate Reference:	Well SRC Kelly Farms A-4-3NHZ
Project:	SEC.4-T5N-R66W	TVD Reference:	WELL @ 4766.5ft (Ensign Rig #131 - RKB - 13.5')
Reference Site:	SRC Kelly Farms Pad Sec.4-T5N-R66W	MD Reference:	WELL @ 4766.5ft (Ensign Rig #131 - RKB - 13.5')
Site Error:	0.0ft	North Reference:	True
Reference Well:	SRC Kelly Farms A-4-3NHZ	Survey Calculation Method:	Minimum Curvature
Well Error:	0.0ft	Output errors are at	2.00 sigma
Reference Wellbore	Wellbore #1	Database:	Landmark
Reference Design:	Plan #2 (4-21-14)	Offset TVD Reference:	Offset Datum

Offset Design		SRC Kelly Farms Pad Sec.4-T5N-R66W - SRC Kelly Farms 22-4-3CHZ - Wellbore #1 - Plan #2 (4-21-1										Offset Site Error:		0.0 ft
Survey Program: 0-MWD												Offset Well Error:		0.0 ft
Reference		Offset		Semi Major Axis			Distance							Warning
Measured Depth (ft)	Vertical Depth (ft)	Measured Depth (ft)	Vertical Depth (ft)	Reference (ft)	Offset (ft)	Highside Toolface (°)	Offset Wellbore Centre +N/-S (ft)	+E/-W (ft)	Between Centres (ft)	Between Ellipses (ft)	Minimum Separation (ft)	Separation Factor		
5,100.0	5,074.0	5,082.1	5,075.0	14.4	11.1	175.13	-193.2	54.5	692.0	669.6	22.43	30.850		
5,200.0	5,174.0	5,182.0	5,175.0	14.5	11.3	175.15	-193.2	54.5	694.7	671.9	22.80	30.463		
5,300.0	5,274.0	5,282.0	5,275.0	14.7	11.5	176.41	-193.2	54.5	694.8	668.7	26.13	26.595		
5,400.0	5,374.0	5,382.0	5,375.0	14.9	11.7	176.41	-193.2	54.5	694.8	668.3	26.50	26.218		
5,500.0	5,474.0	5,482.0	5,475.0	15.0	11.9	176.41	-193.2	54.5	694.8	667.9	26.88	25.848		
5,600.0	5,574.0	5,582.0	5,575.0	15.2	12.1	176.41	-193.2	54.5	694.8	667.5	27.26	25.487		
5,700.0	5,674.0	5,682.0	5,675.0	15.4	12.3	176.41	-193.2	54.5	694.8	667.2	27.64	25.135		
5,800.0	5,774.0	5,782.0	5,775.0	15.6	12.5	176.41	-193.2	54.5	694.8	666.8	28.03	24.790		
5,900.0	5,874.0	5,882.0	5,875.0	15.8	12.7	176.41	-193.2	54.5	694.8	666.4	28.41	24.453		
6,000.0	5,974.0	5,982.0	5,975.0	15.9	12.9	176.41	-193.2	54.5	694.8	666.0	28.80	24.123		
6,100.0	6,074.0	6,082.0	6,075.0	16.1	13.1	176.41	-193.2	54.5	694.8	665.6	29.19	23.801		
6,200.0	6,174.0	6,182.0	6,175.0	16.3	13.3	176.41	-193.2	54.5	694.8	665.2	29.58	23.487		
6,300.0	6,274.0	6,282.0	6,275.0	16.5	13.5	86.49	-193.2	54.5	694.8	667.3	27.48	25.284		
6,400.0	6,373.3	6,381.4	6,374.3	16.6	13.7	87.40	-193.2	54.5	694.2	666.3	27.89	24.888		
6,500.0	6,470.7	6,478.7	6,471.7	16.8	13.9	89.27	-193.2	54.5	693.5	665.2	28.32	24.484		
6,530.4	6,499.6	6,507.7	6,500.6	16.9	14.0	90.00	-193.2	54.5	693.4	665.0	28.47	24.360		
6,600.0	6,564.5	6,574.5	6,567.4	17.0	14.2	91.76	-193.2	57.1	693.8	665.0	28.79	24.100		
6,700.0	6,653.5	6,674.8	6,666.4	17.3	14.4	94.23	-193.2	72.7	695.5	666.2	29.33	23.716		
6,800.0	6,736.2	6,780.5	6,767.3	17.5	14.7	96.55	-193.3	103.9	698.4	668.4	30.00	23.282		
6,900.0	6,811.5	6,891.9	6,867.4	17.9	15.0	98.68	-193.3	152.5	702.1	671.2	30.89	22.727		
7,000.0	6,878.2	7,009.0	6,963.2	18.5	15.6	100.54	-193.3	219.6	706.0	673.9	32.15	21.961		
7,100.0	6,935.3	7,131.5	7,050.3	19.4	16.4	102.07	-193.4	305.4	709.7	675.8	33.95	20.905		
7,200.0	6,982.0	7,258.4	7,123.8	20.6	17.7	103.18	-193.5	408.7	712.7	676.3	36.46	19.547		
7,300.0	7,017.7	7,388.5	7,179.0	22.1	19.5	103.82	-193.6	526.3	714.5	674.8	39.79	17.957		
7,400.0	7,041.6	7,520.1	7,212.3	23.8	21.8	103.93	-193.7	653.4	715.0	671.1	43.89	16.289		
7,500.0	7,053.6	7,647.7	7,222.0	25.8	24.4	103.54	-193.8	780.5	713.9	665.4	48.51	14.719		
7,564.5	7,056.2	7,712.2	7,222.0	27.2	25.8	103.36	-193.9	845.0	713.4	662.1	51.28	13.913		
7,600.0	7,055.0	7,747.7	7,222.0	27.9	26.6	103.45	-193.9	880.5	713.7	660.9	52.79	13.518		
7,700.0	7,055.0	7,847.7	7,222.0	30.1	28.9	103.45	-194.0	980.5	713.6	656.4	57.23	12.470		
7,800.0	7,055.0	7,947.7	7,222.0	32.5	31.3	103.45	-194.1	1,080.5	713.6	651.8	61.83	11.541		
7,900.0	7,055.0	8,047.7	7,222.0	34.8	33.7	103.45	-194.3	1,180.5	713.6	647.0	66.57	10.719		
8,000.0	7,055.0	8,147.7	7,222.0	37.3	36.2	103.45	-194.4	1,280.5	713.6	642.2	71.41	9.992		
8,100.0	7,055.0	8,247.7	7,222.0	39.8	38.7	103.45	-194.5	1,380.5	713.6	637.2	76.34	9.347		
8,200.0	7,055.0	8,347.7	7,222.0	42.3	41.3	103.45	-194.6	1,480.5	713.6	632.2	81.34	8.772		
8,300.0	7,055.0	8,447.7	7,222.0	44.9	43.9	103.45	-194.7	1,580.5	713.5	627.1	86.40	8.259		
8,400.0	7,055.0	8,547.7	7,222.0	47.5	46.5	103.45	-194.8	1,680.5	713.5	622.0	91.50	7.798		
8,500.0	7,055.0	8,647.7	7,222.0	50.1	49.2	103.45	-194.9	1,780.5	713.5	616.9	96.65	7.383		
8,600.0	7,055.0	8,747.7	7,222.0	52.7	51.8	103.45	-195.0	1,880.5	713.5	611.7	101.83	7.007		
8,700.0	7,055.0	8,847.7	7,222.0	55.4	54.5	103.45	-195.2	1,980.5	713.5	606.4	107.04	6.666		
8,800.0	7,055.0	8,947.7	7,222.0	58.1	57.2	103.45	-195.3	2,080.5	713.5	601.2	112.27	6.355		
8,900.0	7,055.0	9,047.7	7,222.0	60.7	59.9	103.45	-195.4	2,180.5	713.4	595.9	117.53	6.070		
9,000.0	7,055.0	9,147.7	7,222.0	63.4	62.6	103.45	-195.5	2,280.5	713.4	590.6	122.81	5.809		
9,100.0	7,055.0	9,247.7	7,222.0	66.1	65.3	103.46	-195.6	2,380.5	713.4	585.3	128.10	5.569		
9,200.0	7,055.0	9,347.7	7,222.0	68.9	68.0	103.46	-195.7	2,480.5	713.4	580.0	133.41	5.347		
9,300.0	7,055.0	9,447.7	7,222.0	71.6	70.8	103.46	-195.8	2,580.5	713.4	574.7	138.73	5.142		
9,400.0	7,055.0	9,547.7	7,222.0	74.3	73.5	103.46	-196.0	2,680.5	713.4	569.3	144.06	4.952		
9,500.0	7,055.0	9,647.7	7,222.0	77.0	76.2	103.46	-196.1	2,780.5	713.4	563.9	149.41	4.775		
9,600.0	7,055.0	9,747.7	7,222.0	79.8	79.0	103.46	-196.2	2,880.5	713.3	558.6	154.76	4.609		
9,700.0	7,055.0	9,847.7	7,222.0	82.5	81.7	103.46	-196.3	2,980.5	713.3	553.2	160.12	4.455		
9,800.0	7,055.0	9,947.7	7,222.0	85.3	84.5	103.46	-196.4	3,080.5	713.3	547.8	165.49	4.310		

CC - Min centre to center distance or convergent point, SF - min separation factor, ES - min ellipse separation

Company:	Synergy Resources	Local Co-ordinate Reference:	Well SRC Kelly Farms A-4-3NHZ
Project:	SEC.4-T5N-R66W	TVD Reference:	WELL @ 4766.5ft (Ensign Rig #131 - RKB - 13.5')
Reference Site:	SRC Kelly Farms Pad Sec.4-T5N-R66W	MD Reference:	WELL @ 4766.5ft (Ensign Rig #131 - RKB - 13.5')
Site Error:	0.0ft	North Reference:	True
Reference Well:	SRC Kelly Farms A-4-3NHZ	Survey Calculation Method:	Minimum Curvature
Well Error:	0.0ft	Output errors are at	2.00 sigma
Reference Wellbore	Wellbore #1	Database:	Landmark
Reference Design:	Plan #2 (4-21-14)	Offset TVD Reference:	Offset Datum

Offset Design		SRC Kelly Farms Pad Sec.4-T5N-R66W - SRC Kelly Farms 22-4-3CHZ - Wellbore #1 - Plan #2 (4-21-1										Offset Site Error:		0.0 ft
Survey Program: 0-MWD												Offset Well Error:		0.0 ft
Reference		Offset		Semi Major Axis			Distance							Warning
Measured Depth (ft)	Vertical Depth (ft)	Measured Depth (ft)	Vertical Depth (ft)	Reference (ft)	Offset (ft)	Highside Toolface (°)	Offset Wellbore Centre +N/-S (ft)	+E/-W (ft)	Between Centres (ft)	Between Ellipses (ft)	Minimum Separation (ft)	Separation Factor		
9,900.0	7,055.0	10,047.7	7,222.0	88.0	87.3	103.46	-196.5	3,180.5	713.3	542.4	170.86	4.175		
10,000.0	7,055.0	10,147.7	7,222.0	90.8	90.0	103.46	-196.6	3,280.5	713.3	537.0	176.24	4.047		
10,100.0	7,055.0	10,247.7	7,222.0	93.5	92.8	103.46	-196.8	3,380.5	713.3	531.6	181.63	3.927		
10,200.0	7,055.0	10,347.7	7,222.0	96.3	95.6	103.46	-196.9	3,480.5	713.2	526.2	187.02	3.814		
10,300.0	7,055.0	10,447.7	7,222.0	99.0	98.3	103.46	-197.0	3,580.5	713.2	520.8	192.42	3.707		
10,400.0	7,055.0	10,547.7	7,222.0	101.8	101.1	103.46	-197.1	3,680.5	713.2	515.4	197.82	3.605		
10,500.0	7,055.0	10,647.7	7,222.0	104.6	103.9	103.46	-197.2	3,780.5	713.2	510.0	203.23	3.509		
10,600.0	7,055.0	10,747.7	7,222.0	107.3	106.6	103.46	-197.3	3,880.5	713.2	504.5	208.64	3.418		
10,700.0	7,055.0	10,847.7	7,222.0	110.1	109.4	103.46	-197.4	3,980.5	713.2	499.1	214.05	3.332		
10,800.0	7,055.0	10,947.7	7,222.0	112.9	112.2	103.46	-197.6	4,080.5	713.1	493.7	219.47	3.249		
10,900.0	7,055.0	11,047.7	7,222.0	115.7	115.0	103.46	-197.7	4,180.5	713.1	488.2	224.88	3.171		
11,000.0	7,055.0	11,147.7	7,222.0	118.4	117.8	103.46	-197.8	4,280.5	713.1	482.8	230.31	3.096		
11,100.0	7,055.0	11,247.7	7,222.0	121.2	120.5	103.46	-197.9	4,380.5	713.1	477.4	235.73	3.025		
11,200.0	7,055.0	11,347.7	7,222.0	124.0	123.3	103.46	-198.0	4,480.5	713.1	471.9	241.16	2.957		
11,300.0	7,055.0	11,447.7	7,222.0	126.8	126.1	103.46	-198.1	4,580.5	713.1	466.5	246.58	2.892		
11,400.0	7,055.0	11,547.7	7,222.0	129.6	128.9	103.46	-198.2	4,680.5	713.0	461.0	252.01	2.829		
11,500.0	7,055.0	11,647.7	7,222.0	132.3	131.7	103.46	-198.3	4,780.5	713.0	455.6	257.45	2.770		
11,600.0	7,055.0	11,747.7	7,222.0	135.1	134.5	103.46	-198.5	4,880.5	713.0	450.1	262.88	2.712		
11,700.0	7,055.0	11,847.7	7,222.0	137.9	137.3	103.46	-198.6	4,980.5	713.0	444.7	268.32	2.657		
11,800.0	7,055.0	11,947.7	7,222.0	140.7	140.1	103.46	-198.7	5,080.5	713.0	439.2	273.75	2.604		
11,823.1	7,055.0	11,970.8	7,222.0	141.3	140.7	103.46	-198.7	5,103.6	713.0	438.0	275.01	2.593		
11,900.0	7,055.0	11,988.0	7,222.0	143.5	141.2	103.46	-198.7	5,120.8	715.5	437.9	277.57	2.578 SF		
11,902.3	7,055.0	11,988.0	7,222.0	143.5	141.2	103.46	-198.7	5,120.8	715.7	438.0	277.63	2.578		

Company:	Synergy Resources	Local Co-ordinate Reference:	Well SRC Kelly Farms A-4-3NHZ
Project:	SEC.4-T5N-R66W	TVD Reference:	WELL @ 4766.5ft (Ensign Rig #131 - RKB - 13.5')
Reference Site:	SRC Kelly Farms Pad Sec.4-T5N-R66W	MD Reference:	WELL @ 4766.5ft (Ensign Rig #131 - RKB - 13.5')
Site Error:	0.0ft	North Reference:	True
Reference Well:	SRC Kelly Farms A-4-3NHZ	Survey Calculation Method:	Minimum Curvature
Well Error:	0.0ft	Output errors are at	2.00 sigma
Reference Wellbore	Wellbore #1	Database:	Landmark
Reference Design:	Plan #2 (4-21-14)	Offset TVD Reference:	Offset Datum

Offset Design		SRC Kelly Farms Pad Sec.4-T5N-R66W - SRC Kelly Farms 22-4-3NHZ - Wellbore #1 - Plan #2 (4-21-1										Offset Site Error:		0.0 ft
Survey Program:		0-MWD										Offset Well Error:		0.0 ft
Reference		Offset		Semi Major Axis			Distance							Warning
Measured Depth (ft)	Vertical Depth (ft)	Measured Depth (ft)	Vertical Depth (ft)	Reference (ft)	Offset (ft)	Highside Toolface (°)	Offset Wellbore Centre +N/-S (ft)	+E/-W (ft)	Between Centres (ft)	Between Ellipses (ft)	Minimum Separation (ft)	Separation Factor		
0.0	0.0	0.0	0.0	0.0	0.0	108.00	-14.2	43.7	46.0					
100.0	100.0	98.0	98.0	0.1	0.1	108.00	-14.2	43.7	46.0	45.7	0.22	206.531		
200.0	200.0	198.0	198.0	0.3	0.3	108.00	-14.2	43.7	46.0	45.3	0.67	68.614	CC, ES	
300.0	300.0	298.0	298.0	0.6	0.6	108.79	-14.2	43.7	46.5	45.4	1.12	41.516		
400.0	399.8	397.8	397.8	0.8	0.8	114.62	-14.2	43.7	48.4	46.9	1.58	30.716		
500.0	499.5	497.5	497.5	1.0	1.0	123.18	-14.2	43.7	52.7	50.6	2.05	25.704		
600.0	598.9	596.9	596.9	1.3	1.2	131.77	-14.2	43.7	59.2	56.6	2.52	23.447		
700.0	698.3	696.3	696.3	1.6	1.5	138.56	-14.2	43.7	66.7	63.7	2.99	22.294		
800.0	797.8	795.8	795.8	1.9	1.7	143.91	-14.2	43.7	75.0	71.5	3.46	21.699		
900.0	897.2	895.2	895.2	2.2	1.9	148.18	-14.2	43.7	83.8	79.9	3.92	21.397		
1,000.0	996.6	994.6	994.6	2.5	2.1	151.62	-14.2	43.7	93.0	88.6	4.37	21.255		
1,100.0	1,096.1	1,097.5	1,097.5	2.7	2.4	154.56	-12.7	43.0	100.8	96.0	4.83	20.858		
1,200.0	1,195.5	1,201.0	1,200.9	3.0	2.6	157.25	-7.9	40.6	105.3	100.0	5.29	19.897		
1,300.0	1,294.9	1,303.7	1,303.1	3.3	2.8	159.94	0.1	36.6	106.6	100.8	5.75	18.523		
1,400.0	1,394.4	1,403.6	1,402.5	3.6	3.1	162.58	8.7	32.3	107.1	100.9	6.21	17.247		
1,500.0	1,493.8	1,503.4	1,502.0	3.9	3.3	165.18	17.3	28.0	107.8	101.2	6.67	16.175		
1,600.0	1,593.3	1,603.3	1,601.4	4.2	3.6	167.75	25.9	23.6	108.8	101.6	7.13	15.266		
1,700.0	1,692.7	1,703.2	1,700.8	4.5	3.8	170.27	34.5	19.3	109.9	102.4	7.59	14.489		
1,800.0	1,792.1	1,803.1	1,800.2	4.8	4.1	172.73	43.1	15.0	111.3	103.3	8.06	13.820		
1,900.0	1,891.6	1,903.0	1,899.6	5.1	4.3	175.13	51.8	10.7	112.9	104.4	8.53	13.240		
2,000.0	1,991.0	2,000.0	1,996.3	5.4	4.6	177.20	59.3	7.0	115.5	106.6	8.97	12.875		
2,100.0	2,090.4	2,096.4	2,092.5	5.7	4.8	178.48	64.0	4.6	121.3	111.9	9.39	12.918		
2,200.0	2,189.9	2,192.2	2,188.4	6.0	4.9	178.99	65.8	3.7	130.0	120.2	9.79	13.272		
2,300.0	2,289.3	2,291.2	2,287.3	6.3	5.1	179.07	65.8	3.7	140.6	130.3	10.23	13.748		
2,400.0	2,388.8	2,390.6	2,386.8	6.6	5.3	179.14	65.8	3.7	151.2	140.5	10.68	14.158		
2,500.0	2,488.2	2,490.1	2,486.2	6.9	5.5	179.19	65.8	3.7	161.8	150.6	11.13	14.532		
2,600.0	2,587.6	2,589.5	2,585.6	7.1	5.8	179.24	65.8	3.7	172.4	160.8	11.59	14.876		
2,700.0	2,687.1	2,689.0	2,685.1	7.4	6.0	179.29	65.8	3.7	183.0	170.9	12.04	15.194		
2,800.0	2,786.5	2,788.4	2,784.5	7.7	6.2	179.33	65.8	3.7	193.5	181.1	12.50	15.488		
2,900.0	2,885.9	2,887.8	2,883.9	8.0	6.4	179.36	65.8	3.7	204.1	191.2	12.95	15.761		
3,000.0	2,985.4	2,987.3	2,983.4	8.3	6.6	179.39	65.8	3.7	214.7	201.3	13.41	16.016		
3,100.0	3,084.8	3,086.7	3,082.8	8.6	6.8	179.42	65.8	3.7	225.3	211.5	13.86	16.253		
3,200.0	3,184.3	3,186.1	3,182.3	8.9	7.0	179.45	65.8	3.7	235.9	221.6	14.32	16.475		
3,300.0	3,283.7	3,285.6	3,281.7	9.2	7.3	179.47	65.8	3.7	246.5	231.7	14.78	16.683		
3,400.0	3,383.1	3,385.0	3,381.1	9.5	7.5	179.49	65.8	3.7	257.1	241.9	15.23	16.878		
3,500.0	3,482.6	3,484.5	3,480.6	9.8	7.7	179.51	65.8	3.7	267.7	252.0	15.69	17.062		
3,600.0	3,582.0	3,583.9	3,580.0	10.1	7.9	179.53	65.8	3.7	278.3	262.2	16.15	17.235		
3,700.0	3,681.4	3,683.3	3,679.4	10.4	8.1	179.55	65.8	3.7	288.9	272.3	16.61	17.399		
3,800.0	3,780.9	3,782.8	3,778.9	10.7	8.4	179.57	65.8	3.7	299.5	282.4	17.06	17.553		
3,900.0	3,880.3	3,882.2	3,878.3	11.0	8.6	179.58	65.8	3.7	310.1	292.6	17.52	17.700		
4,000.0	3,979.7	3,981.6	3,977.7	11.3	8.8	179.59	65.8	3.7	320.7	302.7	17.98	17.839		
4,100.0	4,079.2	4,081.1	4,077.2	11.6	9.0	179.61	65.8	3.7	331.3	312.9	18.44	17.970		
4,200.0	4,178.6	4,180.5	4,176.6	11.9	9.2	179.62	65.8	3.7	341.9	323.0	18.89	18.096		
4,300.0	4,278.1	4,280.0	4,276.1	12.2	9.4	179.63	65.8	3.7	352.5	333.1	19.35	18.215		
4,400.0	4,377.5	4,379.4	4,375.5	12.5	9.7	179.64	65.8	3.7	363.1	343.3	19.81	18.329		
4,500.0	4,476.9	4,478.8	4,474.9	12.7	9.9	179.65	65.8	3.7	373.7	353.4	20.27	18.437		
4,600.0	4,576.4	4,578.3	4,574.4	13.0	10.1	179.66	65.8	3.7	384.3	363.5	20.73	18.541		
4,700.0	4,675.8	4,677.7	4,673.8	13.3	10.3	179.67	65.8	3.7	394.9	373.7	21.18	18.640		
4,800.0	4,775.2	4,777.1	4,773.2	13.6	10.5	179.68	65.8	3.7	405.5	383.8	21.64	18.735		
4,900.0	4,874.7	4,876.6	4,872.7	13.9	10.8	179.69	65.8	3.7	416.1	394.0	22.10	18.826		
5,000.0	4,974.2	4,976.1	4,972.2	14.2	11.0	179.69	65.8	3.7	425.6	403.0	22.55	18.872		

CC - Min centre to center distance or convergent point, SF - min separation factor, ES - min ellipse separation

Company:	Synergy Resources	Local Co-ordinate Reference:	Well SRC Kelly Farms A-4-3NHZ
Project:	SEC.4-T5N-R66W	TVD Reference:	WELL @ 4766.5ft (Ensign Rig #131 - RKB - 13.5')
Reference Site:	SRC Kelly Farms Pad Sec.4-T5N-R66W	MD Reference:	WELL @ 4766.5ft (Ensign Rig #131 - RKB - 13.5')
Site Error:	0.0ft	North Reference:	True
Reference Well:	SRC Kelly Farms A-4-3NHZ	Survey Calculation Method:	Minimum Curvature
Well Error:	0.0ft	Output errors are at	2.00 sigma
Reference Wellbore	Wellbore #1	Database:	Landmark
Reference Design:	Plan #2 (4-21-14)	Offset TVD Reference:	Offset Datum

Offset Design		SRC Kelly Farms Pad Sec.4-T5N-R66W - SRC Kelly Farms 22-4-3NHZ - Wellbore #1 - Plan #2 (4-21-1										Offset Site Error:		0.0 ft
Survey Program:		0-MWD										Offset Well Error:		0.0 ft
Reference		Offset		Semi Major Axis			Distance							Warning
Measured Depth	Vertical Depth	Measured Depth	Vertical Depth	Reference	Offset	Highside Toolface	Offset Wellbore Centre		Between Centres	Between Ellipses	Minimum Separation	Separation Factor		
(ft)	(ft)	(ft)	(ft)	(ft)	(ft)	(°)	+N/-S (ft)	+E/-W (ft)	(ft)	(ft)	(ft)			
5,100.0	5,074.0	5,075.9	5,072.0	14.4	11.2	179.70	65.8	3.7	431.7	408.8	22.95	18.814		
5,200.0	5,174.0	5,175.9	5,172.0	14.5	11.4	179.70	65.8	3.7	434.4	411.1	23.31	18.631		
5,300.0	5,274.0	5,275.9	5,272.0	14.7	11.7	-179.04	65.8	3.7	434.5	408.2	26.32	16.511		
5,400.0	5,374.0	5,375.9	5,372.0	14.9	11.9	-179.04	65.8	3.7	434.5	407.8	26.71	16.267		
5,500.0	5,474.0	5,475.9	5,472.0	15.0	12.1	-179.04	65.8	3.7	434.5	407.4	27.11	16.029		
5,600.0	5,574.0	5,575.9	5,572.0	15.2	12.3	-179.04	65.8	3.7	434.5	407.0	27.51	15.797		
5,700.0	5,674.0	5,675.9	5,672.0	15.4	12.5	-179.04	65.8	3.7	434.5	406.6	27.91	15.571		
5,800.0	5,774.0	5,775.9	5,772.0	15.6	12.8	-179.04	65.8	3.7	434.5	406.2	28.31	15.350		
5,900.0	5,874.0	5,875.9	5,872.0	15.8	13.0	-179.04	65.8	3.7	434.5	405.8	28.71	15.135		
6,000.0	5,974.0	5,975.9	5,972.0	15.9	13.2	-179.04	65.8	3.7	434.5	405.4	29.11	14.926		
6,100.0	6,074.0	6,075.9	6,072.0	16.1	13.4	-179.04	65.8	3.7	434.5	405.0	29.52	14.721		
6,200.0	6,174.0	6,175.9	6,172.0	16.3	13.7	-179.04	65.8	3.7	434.5	404.6	29.92	14.522		
6,237.8	6,211.8	6,213.7	6,209.8	16.4	13.7	91.00	65.8	3.7	434.5	406.7	27.83	15.615		
6,300.0	6,274.0	6,275.9	6,272.0	16.5	13.9	91.07	65.8	3.8	434.5	406.4	28.10	15.464		
6,400.0	6,373.3	6,376.7	6,372.5	16.6	14.1	91.46	65.7	11.5	434.6	406.1	28.50	15.250		
6,500.0	6,470.7	6,477.9	6,471.4	16.8	14.3	91.77	65.6	32.0	434.8	405.9	28.92	15.037		
6,600.0	6,564.5	6,579.3	6,567.2	17.0	14.5	91.99	65.4	65.2	435.1	405.7	29.40	14.803		
6,700.0	6,653.5	6,681.0	6,658.2	17.3	14.8	92.12	65.0	110.5	435.5	405.5	30.00	14.519		
6,800.0	6,736.2	6,782.7	6,742.7	17.5	15.1	92.15	64.6	167.1	435.9	405.1	30.82	14.144		
6,900.0	6,811.5	6,884.5	6,819.1	17.9	15.7	92.09	64.1	234.1	436.4	404.4	31.99	13.641		
7,000.0	6,878.2	6,986.2	6,886.3	18.5	16.5	91.94	63.6	310.4	436.9	403.3	33.62	12.994		
7,100.0	6,935.3	7,087.8	6,943.1	19.4	17.6	91.70	63.0	394.5	437.4	401.6	35.81	12.217		
7,200.0	6,982.0	7,189.1	6,988.5	20.6	19.0	91.37	62.3	485.0	438.0	399.4	38.57	11.356		
7,300.0	7,017.7	7,290.0	7,021.8	22.1	20.6	90.96	61.7	580.2	438.6	396.8	41.89	10.472		
7,400.0	7,041.6	7,390.6	7,042.7	23.8	22.5	90.48	61.0	678.5	439.3	393.6	45.66	9.622		
7,500.0	7,053.6	7,490.7	7,050.9	25.8	24.6	89.93	60.2	778.2	440.0	390.2	49.76	8.843		
7,600.0	7,055.0	7,593.2	7,051.0	27.9	26.8	89.74	60.0	880.7	440.2	386.1	54.14	8.130		
7,700.0	7,055.0	7,693.2	7,051.0	30.1	29.1	89.74	59.8	980.7	440.2	381.5	58.70	7.499		
7,800.0	7,055.0	7,793.2	7,051.0	32.5	31.5	89.74	59.7	1,080.7	440.2	376.8	63.43	6.940		
7,900.0	7,055.0	7,893.2	7,051.0	34.8	33.9	89.74	59.6	1,180.7	440.2	371.9	68.30	6.445		
8,000.0	7,055.0	7,993.2	7,051.0	37.3	36.4	89.74	59.5	1,280.7	440.2	366.9	73.27	6.008		
8,100.0	7,055.0	8,093.2	7,051.0	39.8	38.9	89.74	59.3	1,380.7	440.2	361.9	78.33	5.620		
8,200.0	7,055.0	8,193.2	7,051.0	42.3	41.5	89.74	59.2	1,480.7	440.2	356.7	83.46	5.274		
8,300.0	7,055.0	8,293.2	7,051.0	44.9	44.1	89.74	59.1	1,580.7	440.2	351.5	88.65	4.966		
8,400.0	7,055.0	8,393.2	7,051.0	47.5	46.7	89.74	58.9	1,680.7	440.2	346.3	93.89	4.689		
8,500.0	7,055.0	8,493.2	7,051.0	50.1	49.4	89.74	58.8	1,780.7	440.2	341.0	99.17	4.439		
8,600.0	7,055.0	8,593.2	7,051.0	52.7	52.0	89.74	58.7	1,880.7	440.2	335.7	104.48	4.213		
8,700.0	7,055.0	8,693.2	7,051.0	55.4	54.7	89.74	58.6	1,980.7	440.2	330.4	109.83	4.008		
8,800.0	7,055.0	8,793.2	7,051.0	58.1	57.4	89.74	58.4	2,080.7	440.2	325.0	115.20	3.821		
8,900.0	7,055.0	8,893.2	7,051.0	60.7	60.1	89.74	58.3	2,180.7	440.2	319.6	120.60	3.650		
9,000.0	7,055.0	8,993.2	7,051.0	63.4	62.8	89.74	58.2	2,280.7	440.2	314.2	126.01	3.493		
9,100.0	7,055.0	9,093.2	7,051.0	66.1	65.5	89.74	58.0	2,380.7	440.2	308.7	131.44	3.349		
9,200.0	7,055.0	9,193.2	7,051.0	68.9	68.3	89.74	57.9	2,480.7	440.2	303.3	136.89	3.216		
9,300.0	7,055.0	9,293.2	7,051.0	71.6	71.0	89.74	57.8	2,580.7	440.2	297.8	142.35	3.092		
9,400.0	7,055.0	9,393.2	7,051.0	74.3	73.7	89.74	57.6	2,680.7	440.2	292.4	147.82	2.978		
9,500.0	7,055.0	9,493.2	7,051.0	77.0	76.5	89.74	57.5	2,780.7	440.2	286.9	153.30	2.871		
9,600.0	7,055.0	9,593.2	7,051.0	79.8	79.2	89.74	57.4	2,880.7	440.2	281.4	158.79	2.772		
9,700.0	7,055.0	9,693.2	7,051.0	82.5	82.0	89.74	57.3	2,980.7	440.2	275.9	164.29	2.679		
9,800.0	7,055.0	9,793.2	7,051.0	85.3	84.7	89.74	57.1	3,080.7	440.2	270.4	169.80	2.592		
9,900.0	7,055.0	9,893.2	7,051.0	88.0	87.5	89.74	57.0	3,180.7	440.2	264.9	175.31	2.511		

CC - Min centre to center distance or convergent point, SF - min separation factor, ES - min ellipse separation

Company:	Synergy Resources	Local Co-ordinate Reference:	Well SRC Kelly Farms A-4-3NHZ
Project:	SEC.4-T5N-R66W	TVD Reference:	WELL @ 4766.5ft (Ensign Rig #131 - RKB - 13.5')
Reference Site:	SRC Kelly Farms Pad Sec.4-T5N-R66W	MD Reference:	WELL @ 4766.5ft (Ensign Rig #131 - RKB - 13.5')
Site Error:	0.0ft	North Reference:	True
Reference Well:	SRC Kelly Farms A-4-3NHZ	Survey Calculation Method:	Minimum Curvature
Well Error:	0.0ft	Output errors are at	2.00 sigma
Reference Wellbore	Wellbore #1	Database:	Landmark
Reference Design:	Plan #2 (4-21-14)	Offset TVD Reference:	Offset Datum

Offset Design		SRC Kelly Farms Pad Sec.4-T5N-R66W - SRC Kelly Farms 22-4-3NHZ - Wellbore #1 - Plan #2 (4-21-1										Offset Site Error:		0.0 ft	
Survey Program:		0-MWD										Offset Well Error:		0.0 ft	
Reference		Offset		Semi Major Axis			Distance							Warning	
Measured Depth (ft)	Vertical Depth (ft)	Measured Depth (ft)	Vertical Depth (ft)	Reference (ft)	Offset (ft)	Highside Toolface (°)	Offset Wellbore Centre +N/-S (ft)	+E/-W (ft)	Between Centres (ft)	Between Ellipses (ft)	Minimum Separation (ft)	Separation Factor			
10,000.0	7,055.0	9,993.2	7,051.0	90.8	90.3	89.74	56.9	3,280.7	440.2	259.4	180.83	2.434			
10,100.0	7,055.0	10,093.2	7,051.0	93.5	93.0	89.74	56.7	3,380.7	440.2	253.8	186.36	2.362			
10,200.0	7,055.0	10,193.2	7,051.0	96.3	95.8	89.74	56.6	3,480.7	440.2	248.3	191.89	2.294			
10,300.0	7,055.0	10,293.2	7,051.0	99.0	98.6	89.74	56.5	3,580.7	440.2	242.8	197.43	2.230			
10,400.0	7,055.0	10,393.2	7,051.0	101.8	101.3	89.74	56.4	3,680.7	440.2	237.2	202.97	2.169			
10,500.0	7,055.0	10,493.2	7,051.0	104.6	104.1	89.74	56.2	3,780.7	440.2	231.7	208.51	2.111			
10,600.0	7,055.0	10,593.2	7,051.0	107.3	106.9	89.74	56.1	3,880.7	440.2	226.1	214.06	2.056			
10,700.0	7,055.0	10,693.2	7,051.0	110.1	109.7	89.74	56.0	3,980.7	440.2	220.6	219.62	2.004			
10,800.0	7,055.0	10,793.2	7,051.0	112.9	112.4	89.74	55.8	4,080.7	440.2	215.0	225.17	1.955			
10,900.0	7,055.0	10,893.2	7,051.0	115.7	115.2	89.74	55.7	4,180.7	440.2	209.4	230.73	1.908			
11,000.0	7,055.0	10,993.2	7,051.0	118.4	118.0	89.74	55.6	4,280.7	440.2	203.9	236.29	1.863			
11,100.0	7,055.0	11,093.2	7,051.0	121.2	120.8	89.74	55.4	4,380.7	440.2	198.3	241.86	1.820			
11,200.0	7,055.0	11,193.2	7,051.0	124.0	123.6	89.74	55.3	4,480.7	440.2	192.8	247.42	1.779			
11,300.0	7,055.0	11,293.2	7,051.0	126.8	126.3	89.74	55.2	4,580.7	440.2	187.2	252.99	1.740			
11,400.0	7,055.0	11,393.2	7,051.0	129.6	129.1	89.74	55.1	4,680.7	440.2	181.6	258.56	1.702			
11,500.0	7,055.0	11,493.2	7,051.0	132.3	131.9	89.74	54.9	4,780.7	440.2	176.0	264.14	1.666			
11,600.0	7,055.0	11,593.2	7,051.0	135.1	134.7	89.74	54.8	4,880.7	440.2	170.5	269.71	1.632			
11,700.0	7,055.0	11,693.2	7,051.0	137.9	137.5	89.74	54.7	4,980.7	440.2	164.9	275.29	1.599			
11,800.0	7,055.0	11,793.2	7,051.0	140.7	140.3	89.74	54.5	5,080.7	440.2	159.3	280.86	1.567			
11,850.0	7,055.0	11,843.2	7,051.0	142.1	141.7	89.74	54.5	5,130.7	440.2	156.5	283.65	1.552			
11,900.0	7,055.0	11,853.8	7,051.0	143.5	142.0	89.74	54.5	5,141.3	441.9	156.6	285.35	1.549 SF			
11,902.3	7,055.0	11,853.8	7,051.0	143.5	142.0	89.74	54.5	5,141.3	442.1	156.7	285.41	1.549			

Company:	Synergy Resources	Local Co-ordinate Reference:	Well SRC Kelly Farms A-4-3NHZ
Project:	SEC.4-T5N-R66W	TVD Reference:	WELL @ 4766.5ft (Ensign Rig #131 - RKB - 13.5')
Reference Site:	SRC Kelly Farms Pad Sec.4-T5N-R66W	MD Reference:	WELL @ 4766.5ft (Ensign Rig #131 - RKB - 13.5')
Site Error:	0.0ft	North Reference:	True
Reference Well:	SRC Kelly Farms A-4-3NHZ	Survey Calculation Method:	Minimum Curvature
Well Error:	0.0ft	Output errors are at	2.00 sigma
Reference Wellbore	Wellbore #1	Database:	Landmark
Reference Design:	Plan #2 (4-21-14)	Offset TVD Reference:	Offset Datum

Offset Design		SRC Kelly Farms Pad Sec.4-T5N-R66W - SRC Kelly Farms A-4-3CHZ - Wellbore #1 - Plan #2 (4-21-14)										Offset Site Error:		0.0 ft
Survey Program:		0-MWD										Offset Well Error:		0.0 ft
Reference		Offset		Semi Major Axis			Distance							Warning
Measured Depth (ft)	Vertical Depth (ft)	Measured Depth (ft)	Vertical Depth (ft)	Reference (ft)	Offset (ft)	Highside Toolface (°)	Offset Wellbore Centre +N/-S (ft)	+E/-W (ft)	Between Centres (ft)	Between Ellipses (ft)	Minimum Separation (ft)	Separation Factor		
0.0	0.0	0.0	0.0	0.0	0.0	78.45	8.0	39.3	40.1					
100.0	100.0	99.0	99.0	0.1	0.1	78.45	8.0	39.3	40.1	39.8	0.22	179.142		
200.0	200.0	199.0	199.0	0.3	0.3	78.45	8.0	39.3	40.1	39.4	0.67	59.615		
300.0	300.0	299.0	299.0	0.6	0.6	79.66	8.0	39.3	39.7	38.6	1.12	35.410		
400.0	399.8	398.8	398.8	0.8	0.8	87.22	8.0	39.3	39.1	37.5	1.58	24.808		
425.6	425.4	424.4	424.4	0.9	0.8	90.00	8.0	39.3	39.1	37.4	1.70	23.004 CC, ES		
500.0	499.5	498.5	498.5	1.0	1.0	99.84	8.0	39.3	39.7	37.6	2.05	19.336		
600.0	598.9	597.9	597.9	1.3	1.2	113.90	8.0	39.3	42.8	40.2	2.54	16.856		
700.0	698.3	697.3	697.3	1.6	1.5	125.48	8.0	39.3	48.1	45.1	3.02	15.940		
800.0	797.8	796.8	796.8	1.9	1.7	134.49	8.0	39.3	54.9	51.4	3.48	15.771		
900.0	897.2	897.6	897.6	2.2	1.9	140.31	9.6	39.6	61.8	57.8	3.95	15.650		
1,000.0	996.6	998.9	998.8	2.5	2.1	142.76	14.8	40.7	66.7	62.2	4.42	15.095		
1,100.0	1,096.1	1,100.5	1,100.0	2.7	2.4	142.74	23.4	42.4	69.2	64.3	4.90	14.119		
1,200.0	1,195.5	1,202.1	1,200.8	3.0	2.6	140.53	35.6	45.0	69.5	64.1	5.42	12.817		
1,300.0	1,294.9	1,302.8	1,300.2	3.3	2.9	136.28	50.7	48.1	68.0	62.0	5.98	11.365		
1,400.0	1,394.4	1,402.6	1,398.8	3.6	3.2	131.55	66.1	51.3	66.6	60.0	6.57	10.134		
1,500.0	1,493.8	1,502.4	1,497.4	3.9	3.5	126.66	81.5	54.5	65.6	58.5	7.19	9.135		
1,600.0	1,593.3	1,602.3	1,596.0	4.2	3.8	121.66	97.0	57.7	65.2	57.4	7.83	8.331		
1,634.6	1,627.7	1,636.8	1,630.1	4.3	3.9	119.93	102.3	58.8	65.2	57.1	8.06	8.092		
1,700.0	1,692.7	1,702.1	1,694.6	4.5	4.1	116.64	112.4	60.9	65.3	56.8	8.49	7.692		
1,800.0	1,792.1	1,801.9	1,793.2	4.8	4.5	111.67	127.8	64.0	65.9	56.7	9.16	7.192		
1,900.0	1,891.6	1,901.8	1,891.8	5.1	4.8	106.83	143.2	67.2	66.9	57.1	9.83	6.809		
2,000.0	1,991.0	2,001.6	1,990.3	5.4	5.2	102.16	158.7	70.4	68.5	58.0	10.50	6.522		
2,100.0	2,090.4	2,101.4	2,088.9	5.7	5.5	97.73	174.1	73.6	70.4	59.3	11.15	6.314		
2,200.0	2,189.9	2,201.3	2,187.5	6.0	5.8	93.56	189.5	76.8	72.8	61.0	11.80	6.171		
2,300.0	2,289.3	2,301.1	2,286.1	6.3	6.2	89.66	204.9	80.0	75.5	63.1	12.42	6.078		
2,400.0	2,388.8	2,400.9	2,384.7	6.6	6.5	86.06	220.3	83.2	78.6	65.5	13.03	6.027		
2,500.0	2,488.2	2,500.8	2,483.3	6.9	6.9	82.73	235.8	86.4	81.9	68.3	13.63	6.008		
2,600.0	2,587.6	2,601.0	2,582.3	7.1	7.2	79.80	251.0	89.5	85.4	71.2	14.20	6.014		
2,700.0	2,687.1	2,702.0	2,682.5	7.4	7.5	78.75	263.7	92.2	88.1	73.3	14.72	5.981		
2,800.0	2,786.5	2,803.1	2,783.1	7.7	7.7	79.87	273.0	94.1	89.5	74.2	15.27	5.859		
2,900.0	2,885.9	2,904.0	2,883.9	8.0	7.9	83.09	278.7	95.3	89.8	74.0	15.83	5.673		
3,000.0	2,985.4	3,004.5	2,984.3	8.3	8.1	88.45	281.0	95.7	89.6	73.2	16.36	5.474		
3,023.3	3,008.5	3,027.8	3,007.5	8.4	8.1	90.00	281.0	95.8	89.6	73.1	16.48	5.433		
3,100.0	3,084.8	3,104.0	3,083.8	8.6	8.3	95.16	281.0	95.8	89.9	73.1	16.85	5.337		
3,200.0	3,184.3	3,203.5	3,183.3	8.9	8.4	101.74	281.0	95.8	91.5	74.2	17.28	5.294		
3,300.0	3,283.7	3,302.9	3,282.7	9.2	8.6	108.03	281.0	95.8	94.2	76.6	17.65	5.339		
3,400.0	3,383.1	3,402.4	3,382.1	9.5	8.8	113.90	281.0	95.8	98.0	80.1	17.97	5.456		
3,500.0	3,482.6	3,501.8	3,481.6	9.8	9.0	119.29	281.0	95.8	102.8	84.6	18.26	5.631		
3,600.0	3,582.0	3,601.2	3,581.0	10.1	9.1	124.16	281.0	95.8	108.4	89.9	18.53	5.850		
3,700.0	3,681.4	3,700.7	3,680.4	10.4	9.3	128.53	281.0	95.8	114.7	95.9	18.80	6.101		
3,800.0	3,780.9	3,800.1	3,779.9	10.7	9.5	132.42	281.0	95.8	121.6	102.5	19.08	6.375		
3,900.0	3,880.3	3,899.5	3,879.3	11.0	9.7	135.89	281.0	95.8	129.0	109.7	19.37	6.662		
4,000.0	3,979.7	3,999.0	3,978.7	11.3	9.9	138.97	281.0	95.8	136.9	117.2	19.67	6.958		
4,100.0	4,079.2	4,098.4	4,078.2	11.6	10.1	141.71	281.0	95.8	145.0	125.1	19.98	7.258		
4,200.0	4,178.6	4,197.8	4,177.6	11.9	10.3	144.16	281.0	95.8	153.5	133.2	20.31	7.557		
4,300.0	4,278.1	4,297.3	4,277.1	12.2	10.5	146.35	281.0	95.8	162.2	141.6	20.66	7.854		
4,400.0	4,377.5	4,396.7	4,376.5	12.5	10.7	148.31	281.0	95.8	171.2	150.2	21.01	8.146		
4,500.0	4,476.9	4,496.2	4,475.9	12.7	10.9	150.08	281.0	95.8	180.3	158.9	21.38	8.433		
4,600.0	4,576.4	4,595.6	4,575.4	13.0	11.1	151.67	281.0	95.8	189.6	167.8	21.75	8.713		
4,700.0	4,675.8	4,695.0	4,674.8	13.3	11.3	153.12	281.0	95.8	199.0	176.8	22.14	8.986		

CC - Min centre to center distance or convergent point, SF - min separation factor, ES - min ellipse separation

Company:	Synergy Resources	Local Co-ordinate Reference:	Well SRC Kelly Farms A-4-3NHZ
Project:	SEC.4-T5N-R66W	TVD Reference:	WELL @ 4766.5ft (Ensign Rig #131 - RKB - 13.5')
Reference Site:	SRC Kelly Farms Pad Sec.4-T5N-R66W	MD Reference:	WELL @ 4766.5ft (Ensign Rig #131 - RKB - 13.5')
Site Error:	0.0ft	North Reference:	True
Reference Well:	SRC Kelly Farms A-4-3NHZ	Survey Calculation Method:	Minimum Curvature
Well Error:	0.0ft	Output errors are at	2.00 sigma
Reference Wellbore	Wellbore #1	Database:	Landmark
Reference Design:	Plan #2 (4-21-14)	Offset TVD Reference:	Offset Datum

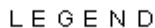
Offset Design										SRC Kelly Farms Pad Sec.4-T5N-R66W - SRC Kelly Farms A-4-3CHZ - Wellbore #1 - Plan #2 (4-21-14)				Offset Site Error:		0.0 ft
Survey Program: 0-MWD										Offset Well Error:		0.0 ft				
Reference		Offset		Semi Major Axis			Distance									
Measured Depth	Vertical	Measured	Vertical	Reference	Offset	Highside	Offset Wellbore Centre		Between	Between	Minimum	Separation	Warning			
Depth (ft)	Depth (ft)	Depth (ft)	Depth (ft)	(ft)	(ft)	Toolface (°)	+N/-S (ft)	+E/-W (ft)	Centres (ft)	Ellipses (ft)	Separation (ft)	Factor				
4,800.0	4,775.2	4,794.5	4,774.2	13.6	11.5	154.43	281.0	95.8	208.5	185.9	22.53	9.252				
4,900.0	4,874.7	4,893.9	4,873.7	13.9	11.7	155.63	281.0	95.8	218.1	195.2	22.93	9.511				
5,000.0	4,974.2	4,993.4	4,973.2	14.2	11.9	156.68	281.0	95.8	226.8	203.5	23.32	9.727				
5,100.0	5,074.0	5,093.3	5,073.0	14.4	12.1	157.32	281.0	95.8	232.5	208.8	23.67	9.822				
5,200.0	5,174.0	5,193.2	5,173.0	14.5	12.3	157.59	281.0	95.8	234.9	210.9	24.01	9.785				
5,300.0	5,274.0	5,293.2	5,273.0	14.7	12.5	158.86	281.0	95.8	235.0	208.5	26.57	8.846				
5,400.0	5,374.0	5,393.2	5,373.0	14.9	12.7	158.86	281.0	95.8	235.0	208.1	26.95	8.720				
5,500.0	5,474.0	5,493.2	5,473.0	15.0	12.9	158.86	281.0	95.8	235.0	207.7	27.34	8.596				
5,600.0	5,574.0	5,593.2	5,573.0	15.2	13.1	158.86	281.0	95.8	235.0	207.3	27.73	8.475				
5,700.0	5,674.0	5,693.2	5,673.0	15.4	13.3	158.86	281.0	95.8	235.0	206.9	28.12	8.357				
5,800.0	5,774.0	5,793.2	5,773.0	15.6	13.5	158.86	281.0	95.8	235.0	206.5	28.52	8.242				
5,900.0	5,874.0	5,893.2	5,873.0	15.8	13.7	158.86	281.0	95.8	235.0	206.1	28.91	8.130				
6,000.0	5,974.0	5,993.2	5,973.0	15.9	13.9	158.86	281.0	95.8	235.0	205.7	29.31	8.020				
6,100.0	6,074.0	6,093.2	6,073.0	16.1	14.1	158.86	281.0	95.8	235.0	205.3	29.70	7.912				
6,200.0	6,174.0	6,193.2	6,173.0	16.3	14.3	158.86	281.0	95.8	235.0	204.9	30.10	7.808				
6,300.0	6,274.0	6,293.2	6,273.0	16.5	14.5	69.08	281.0	95.8	234.7	206.1	28.61	8.205				
6,400.0	6,373.3	6,392.6	6,372.3	16.6	14.7	71.77	281.0	95.8	231.1	202.3	28.86	8.009				
6,500.0	6,470.7	6,489.9	6,469.7	16.8	14.9	77.54	281.0	95.8	225.0	195.9	29.10	7.731				
6,600.0	6,564.5	6,582.4	6,562.1	17.0	15.1	85.52	281.0	97.7	220.0	190.5	29.46	7.467				
6,654.7	6,613.8	6,633.3	6,612.8	17.1	15.2	89.96	281.0	103.3	219.2	189.5	29.73	7.375				
6,700.0	6,653.5	6,676.6	6,655.4	17.3	15.3	93.60	281.0	110.9	219.7	189.8	29.95	7.337				
6,800.0	6,736.2	6,775.7	6,750.6	17.5	15.6	101.31	280.9	137.8	224.1	193.6	30.47	7.355				
6,900.0	6,811.5	6,880.1	6,846.0	17.9	15.9	108.31	280.9	180.0	232.1	201.1	30.93	7.504				
7,000.0	6,878.2	6,990.1	6,938.7	18.5	16.3	114.36	280.8	239.0	242.3	210.9	31.38	7.722				
7,100.0	6,935.3	7,105.8	7,025.2	19.4	16.9	119.32	280.7	315.6	253.3	221.3	32.02	7.913				
7,200.0	6,982.0	7,226.9	7,101.4	20.6	18.0	123.15	280.5	409.6	263.6	230.5	33.10	7.965				
7,300.0	7,017.7	7,352.8	7,162.6	22.1	19.5	125.85	280.3	519.4	272.0	237.1	34.88	7.797				
7,400.0	7,041.6	7,482.2	7,204.5	23.8	21.5	127.43	280.1	641.7	277.4	239.8	37.58	7.381				
7,500.0	7,053.6	7,613.4	7,223.9	25.8	24.0	127.91	279.9	771.2	279.3	238.0	41.23	6.773				
7,600.0	7,055.0	7,723.2	7,225.0	27.9	26.3	127.80	279.7	881.0	279.0	234.0	44.99	6.202				
7,700.0	7,055.0	7,823.2	7,225.0	30.1	28.5	127.80	279.6	981.0	279.0	230.4	48.55	5.746				
7,800.0	7,055.0	7,923.2	7,225.0	32.5	30.8	127.80	279.5	1,081.0	279.0	226.7	52.26	5.338				
7,900.0	7,055.0	8,023.2	7,225.0	34.8	33.2	127.81	279.4	1,181.0	279.0	222.9	56.10	4.973				
8,000.0	7,055.0	8,123.2	7,225.0	37.3	35.6	127.81	279.2	1,281.0	279.0	218.9	60.03	4.647				
8,100.0	7,055.0	8,223.2	7,225.0	39.8	38.1	127.81	279.1	1,381.0	279.0	214.9	64.05	4.356				
8,200.0	7,055.0	8,323.2	7,225.0	42.3	40.7	127.81	279.0	1,481.0	278.9	210.8	68.12	4.095				
8,300.0	7,055.0	8,423.2	7,225.0	44.9	43.2	127.81	278.9	1,581.0	278.9	206.7	72.26	3.860				
8,400.0	7,055.0	8,523.2	7,225.0	47.5	45.8	127.81	278.8	1,681.0	278.9	202.5	76.44	3.649				
8,500.0	7,055.0	8,623.2	7,225.0	50.1	48.4	127.81	278.6	1,781.0	278.9	198.3	80.65	3.458				
8,600.0	7,055.0	8,723.2	7,225.0	52.7	51.1	127.81	278.5	1,881.0	278.9	194.0	84.90	3.285				
8,700.0	7,055.0	8,823.2	7,225.0	55.4	53.7	127.81	278.4	1,981.0	278.9	189.7	89.18	3.128				
8,800.0	7,055.0	8,923.2	7,225.0	58.1	56.4	127.81	278.3	2,081.0	278.9	185.4	93.48	2.984				
8,900.0	7,055.0	9,023.2	7,225.0	60.7	59.1	127.82	278.2	2,181.0	278.9	181.1	97.80	2.852				
9,000.0	7,055.0	9,123.2	7,225.0	63.4	61.8	127.82	278.0	2,281.0	278.9	176.8	102.14	2.730				
9,100.0	7,055.0	9,223.2	7,225.0	66.1	64.5	127.82	277.9	2,381.0	278.9	172.4	106.50	2.619				
9,200.0	7,055.0	9,323.2	7,225.0	68.9	67.2	127.82	277.8	2,481.0	278.9	168.0	110.87	2.515				
9,300.0	7,055.0	9,423.2	7,225.0	71.6	69.9	127.82	277.7	2,581.0	278.9	163.6	115.25	2.420				
9,400.0	7,055.0	9,523.2	7,225.0	74.3	72.7	127.82	277.5	2,681.0	278.9	159.2	119.65	2.331				
9,500.0	7,055.0	9,623.2	7,225.0	77.0	75.4	127.82	277.4	2,781.0	278.9	154.8	124.05	2.248				
9,600.0	7,055.0	9,723.2	7,225.0	79.8	78.1	127.82	277.3	2,881.0	278.9	150.4	128.46	2.171				







CC - Min centre to center distance or convergent point, SF - min separation factor, ES - min ellipse separation

Company:	Synergy Resources	Local Co-ordinate Reference:	Well SRC Kelly Farms A-4-3NHZ
Project:	SEC.4-T5N-R66W	TVD Reference:	WELL @ 4766.5ft (Ensign Rig #131 - RKB - 13.5')
Reference Site:	SRC Kelly Farms Pad Sec.4-T5N-R66W	MD Reference:	WELL @ 4766.5ft (Ensign Rig #131 - RKB - 13.5')
Site Error:	0.0ft	North Reference:	True
Reference Well:	SRC Kelly Farms A-4-3NHZ	Survey Calculation Method:	Minimum Curvature
Well Error:	0.0ft	Output errors are at	2.00 sigma
Reference Wellbore	Wellbore #1	Database:	Landmark
Reference Design:	Plan #2 (4-21-14)	Offset TVD Reference:	Offset Datum

Offset Design		SRC Kelly Farms Pad Sec.4-T5N-R66W - SRC Kelly Farms A-4-3CHZ - Wellbore #1 - Plan #2 (4-21-14)										Offset Site Error:		0.0 ft	
Survey Program: 0-MWD												Offset Well Error:		0.0 ft	
Reference		Offset		Semi Major Axis			Distance							Warning	
Measured Depth (ft)	Vertical Depth (ft)	Measured Depth (ft)	Vertical Depth (ft)	Reference (ft)	Offset (ft)	Highside Toolface (°)	Offset Wellbore Centre +N/-S (ft)	+E/-W (ft)	Between Centres (ft)	Between Ellipses (ft)	Minimum Separation (ft)	Separation Factor			
9,700.0	7,055.0	9,823.2	7,225.0	82.5	80.9	127.82	277.2	2,981.0	278.8	146.0	132.89	2.098			
9,800.0	7,055.0	9,923.2	7,225.0	85.3	83.6	127.82	277.1	3,081.0	278.8	141.5	137.31	2.031			
9,900.0	7,055.0	10,023.2	7,225.0	88.0	86.4	127.83	276.9	3,181.0	278.8	137.1	141.75	1.967			
10,000.0	7,055.0	10,123.2	7,225.0	90.8	89.1	127.83	276.8	3,281.0	278.8	132.6	146.19	1.907			
10,100.0	7,055.0	10,223.2	7,225.0	93.5	91.9	127.83	276.7	3,381.0	278.8	128.2	150.63	1.851			
10,200.0	7,055.0	10,323.2	7,225.0	96.3	94.7	127.83	276.6	3,481.0	278.8	123.7	155.09	1.798			
10,300.0	7,055.0	10,423.2	7,225.0	99.0	97.4	127.83	276.4	3,581.0	278.8	119.3	159.54	1.748			
10,400.0	7,055.0	10,523.2	7,225.0	101.8	100.2	127.83	276.3	3,681.0	278.8	114.8	164.00	1.700			
10,500.0	7,055.0	10,623.2	7,225.0	104.6	103.0	127.83	276.2	3,781.0	278.8	110.3	168.46	1.655			
10,600.0	7,055.0	10,723.2	7,225.0	107.3	105.7	127.83	276.1	3,881.0	278.8	105.9	172.93	1.612			
10,700.0	7,055.0	10,823.2	7,225.0	110.1	108.5	127.83	276.0	3,981.0	278.8	101.4	177.40	1.572			
10,800.0	7,055.0	10,923.2	7,225.0	112.9	111.3	127.84	275.8	4,081.0	278.8	96.9	181.87	1.533			
10,900.0	7,055.0	11,023.2	7,225.0	115.7	114.1	127.84	275.7	4,181.0	278.8	92.4	186.35	1.496 Level 3			
11,000.0	7,055.0	11,123.2	7,225.0	118.4	116.8	127.84	275.6	4,281.0	278.8	87.9	190.83	1.461 Level 3			
11,100.0	7,055.0	11,223.2	7,225.0	121.2	119.6	127.84	275.5	4,381.0	278.8	83.5	195.31	1.427 Level 3			
11,200.0	7,055.0	11,323.2	7,225.0	124.0	122.4	127.84	275.3	4,481.0	278.8	79.0	199.79	1.395 Level 3			
11,300.0	7,055.0	11,423.2	7,225.0	126.8	125.2	127.84	275.2	4,581.0	278.7	74.5	204.27	1.365 Level 3			
11,400.0	7,055.0	11,523.2	7,225.0	129.6	128.0	127.84	275.1	4,681.0	278.7	70.0	208.76	1.335 Level 3			
11,500.0	7,055.0	11,623.2	7,225.0	132.3	130.8	127.84	275.0	4,781.0	278.7	65.5	213.25	1.307 Level 3			
11,600.0	7,055.0	11,723.2	7,225.0	135.1	133.5	127.84	274.9	4,881.0	278.7	61.0	217.74	1.280 Level 3			
11,700.0	7,055.0	11,823.2	7,225.0	137.9	136.3	127.84	274.7	4,981.0	278.7	56.5	222.23	1.254 Level 3			
11,800.0	7,055.0	11,923.2	7,225.0	140.7	139.1	127.85	274.6	5,081.0	278.7	52.0	226.72	1.229 Level 2			
11,864.7	7,055.0	11,987.9	7,225.0	142.5	140.9	127.85	274.5	5,145.7	278.7	49.1	229.63	1.214 Level 2			
11,900.0	7,055.0	12,005.7	7,225.0	143.5	141.4	127.85	274.5	5,163.6	279.3	48.4	230.82	1.210 Level 2, SF			
11,902.3	7,055.0	12,005.7	7,225.0	143.5	141.4	127.85	274.5	5,163.6	279.4	48.5	230.88	1.210 Level 2			

Reference Depths are relative to WELL @ 4766.5ft (Ensign Rig #131 - Coordinates are relative to: SRC Kelly Farms A-4-3NHZ
Offset Depths are relative to Offset Datum Coordinate System is US State Plane 1983, Colorado Northern Zone
Central Meridian is -105.500000 ° Grid Convergence at Surface is: 0.46°



dist.), Wellbore #1, Wellbore #1 VD		Northridge 11-4D (Exist.), Wellbore #1, Wellbore #1 VD		SRC Kelly Farms 22-4-3CHZ, Wellbore #1, Plan #2 (4-21-14) VD
st), Northridge 4ND, Northridge 4ND VD		Northridge 22-4D (Exist.), Wellbore #1, Wellbore #1 VD		SRC Kelly Farms 22-4-3NHZ, Wellbore #1, Plan #2 (4-21-14) VD
st), Wellbore #1, Wellbore #1 VD		Northridge 4AD (Exist.), Wellbore #1, Wellbore #1 VD		
dist.), Wellbore #1, Wellbore #1 VD		SRC Kelly Farms A-4-3CHZ, Wellbore #1, Plan #2 (4-21-14) VD		