



410 17th Street, Suite 1500
Denver, CO 80202
(720) 440-6100 phone
(720) 305-0804 fax

Bonanzacrk.com

28 April 2014

Colorado Oil and Gas Conservation Commission
The Chancery Building
1120 Lincoln Street, Suite 801
Denver, CO 80203

Attn: Director Matt Lepore

Re: Notice of 318A.a.(4)D. Horizontal Wellbore Spacing Unit Proposal
Latham U-A-14HC
SHL: NENE (194' FNL, 179' FEL) Sec 14-4N-63W, 6TH PM
Top of Production: NENE (10' FNL, 631' FEL) Sec 14-4N-63W, 6TH PM
Bottom of Production: NWNW (10' FNL, 470' FWL) Sec 14-4N-63W, 6TH PM
Weld County, Colorado

Director Lepore:

Bonanza Creek Energy, Inc. (Bonanza) intends to permit, drill and operate the referenced Codell Fm Horizontal Well. As defined by Colorado Oil and Gas Conservation Commission (COGCC) Rule 318A.a.(4)D., Bonanza proposes the following wellbore spacing unit:

N/2 N/2 Section 14 and S/2 S/2 Section 11, Township 4N, Range 63W, 6th PM, Weld County, CO; Containing 320 acres, more or less.

Bonanza has notified the other owners in the unit and no objections were received. Copies of the notifications are maintained in Bonanza's files. Bonanza respectfully requests that you review the enclosed wellbore spacing unit documentation and approve the referenced APD.

Please do not hesitate to call or email me, directly, at (720) 440-6100 or KCaplan@bonanzacrk.com, should you have any questions pertaining to this matter.

Thank you for your cooperation.

Sincerely,
BONANZA CREEK ENERGY, INC.
BONANZA CREEK ENERGY OPERATING COMPANY, LLC

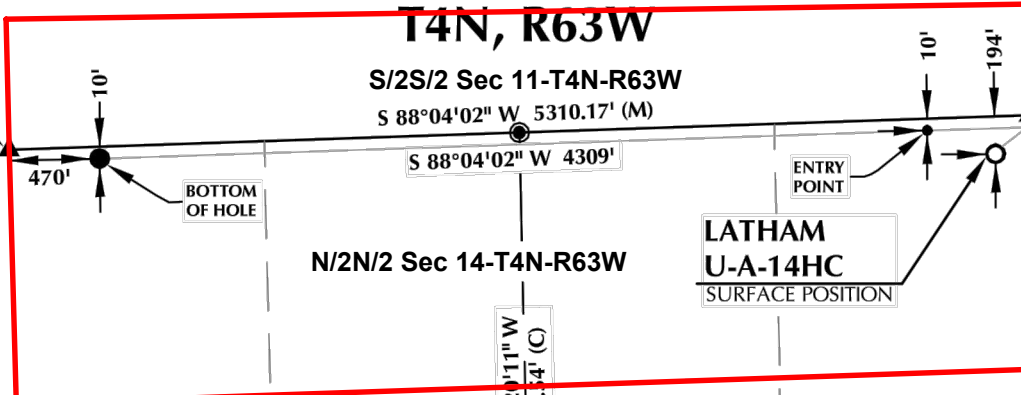
A handwritten signature in blue ink, reading 'Keith S. Caplan'.

Keith S. Caplan
Sr. Regulatory Specialist

N.W. COR.
SEC. 14, T4N, R63W
FOUND ALUM. CAP
L.S. NO. 34995
LAT:40.319709
LON:-104.414918

NE. COR.
SEC. 14, T4N, R63W
FOUND ALUM. CAP
L.S. NO. 4845
LAT:40.320021
LON:-104.395879

531'
179'



T4N, R63W
S/2S/2 Sec 11-T4N-R63W
S 88°04'02" W 5310.17' (M)
S 88°04'02" W 4309'

N/2N/2 Sec 14-T4N-R63W

**LATHAM
U-A-14HC**
SURFACE POSITION

ENTRY POINT

BOTTOM OF HOLE

N 01°32'32" W 5275.21' (M)

LAT:40.312469
LON:-104.414779

S 88°02'32" W
2645.63' (C)

14

N 01°20'11" W
2636.54' (C)

LAT:40.312628
LON:-104.405295

S 88°02'32" W
2645.63' (C)

LAT:40.312786
LON:-104.395810

N 01°07'50" W 5271.00' (M)

N 01°20'11" W
2636.54' (C)

LAT:40.305391
LON:-104.405191

S 88°01'02" W 5272.35' (M)

SURFACE LOCATION
GROUND ELEVATION= 4604.4'
LATITUDE= 40.319478°
LONGITUDE= -104.396515°
1/4 1/4: NE1/4 NE1/4

ENTRY POINT
LATITUDE= 40.319962°
LONGITUDE= -104.397783°
1/4 1/4: NE1/4 NE1/4

BOTTOM HOLE LOCATION
LATITUDE= 40.319709°
LONGITUDE= -104.413232°
1/4 1/4: NW1/4 NW1/4



SCALE: 1" = 1000'

SW. COR.
SEC. 14, T4N, R63W
FOUND ALUM. CAP
L.S. NO. 34995
LAT:40.305230
LON:-104.414641

SE. COR.
SEC. 14, T4N, R63W
FOUND ALUM. CAP
L.S. NO. 34995
LAT:40.305552
LON:-104.395741

CERTIFICATE OF SURVEYOR:

THIS IS TO CERTIFY THAT THE ABOVE PLAT WAS PREPARED FROM FIELD NOTES OF ACTUAL SURVEY MADE BY ME OR UNDER MY SUPERVISION AND THAT THE SAME ARE TRUE AND CORRECT TO THE BEST OF MY KNOWLEDGE AND BELIEF.

NEAREST CULTURAL ITEMS:

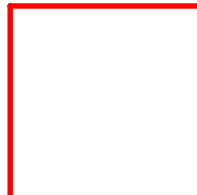
BUILDING: ±5117' E
BUILDING UNIT: ±5117' E
HIGH OCCUPANCY BUILDING UNIT: 5280'+
RESIDENTIAL OUTSIDE ACTIVITY AREA: 5280'+

NOTES:

1. ▲ INDICATES FOUND SECTION CORNER
2. ● INDICATES CALCULATED CORNER
3. DRAWING LATITUDE AND LONGITUDE COORDINATES ARE NAD 83 (CORS 96)(EPOCH:2002)
4. ELEVATION BASED ON NAVD88 (GEOID09)
5. BASIS OF BEARING DERIVED FROM COLORADO COORDINATE



**BONANZA
CREEK**



Wellbore Spacing Unit Outline



Wellbore Spacing Unit Map
24 March 2014 ksc

Latham U-A-14HC
N/2N/2 Sec 14-T4N-R63W 6th PM
S/2S/2 Sec 11-T4N-R63W 6th PM
Weld County, Colorado