

BONANZA CREEK OIL COMPANY

Location: COLORADO Slot: SLOT#01 LATHAM U-A-14HC (194'FNL & 179'FEL, SEC.14)
Field: WELD COUNTY Well: LATHAM U-A-14HC
Facility: SEC.14-T4N-R63W Wellbore: LATHAM U-A-14HC PWB

Plot reference wellpath is LATHAM U-A-14HC (REV-A.0) PWP

True vertical depths are referenced to RIG (RKB)	Grid System: NAD83 / Lambert Colorado SP, Northern Zone (501), US feet
Measured depths are referenced to RIG (RKB)	North Reference: True north
RIG (RKB) to Mean Sea Level: 4621 feet	Scale: True distance
Mean Sea Level to Mud line (At Slot: SLOT#01 LATHAM U-A-14HC (194'FNL & 179'FEL, SEC.14)): 0 feet	Depths are in feet
Coordinates are in feet referenced to Slot	Created by: guenaler on 3/25/2014

Location Information

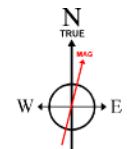
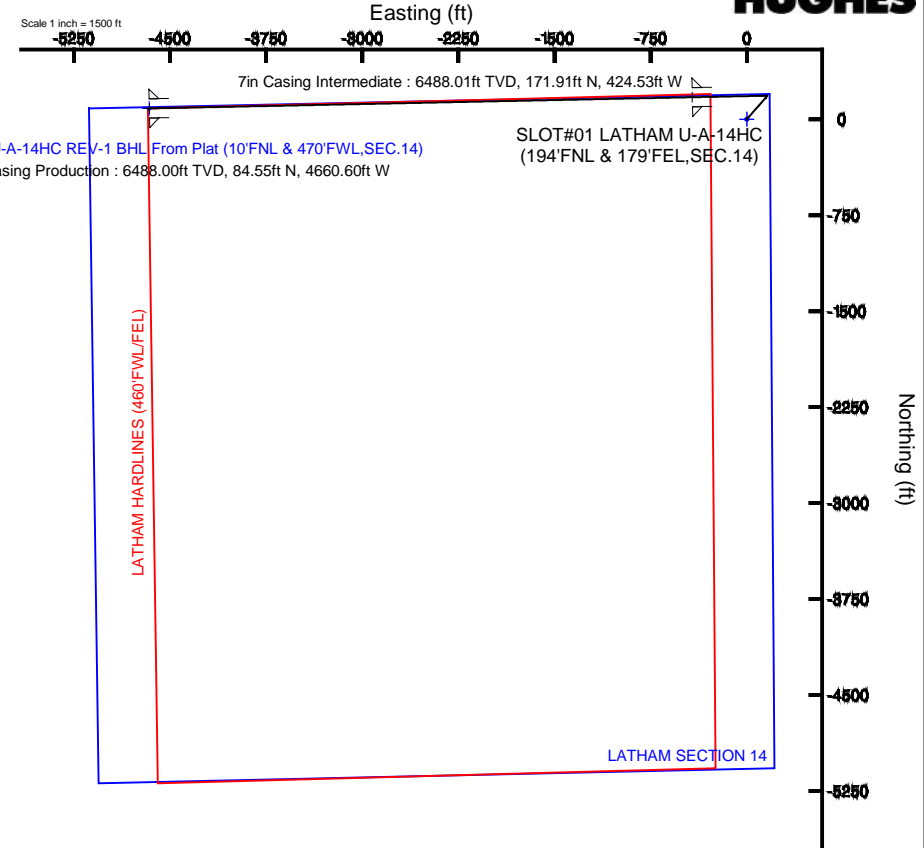
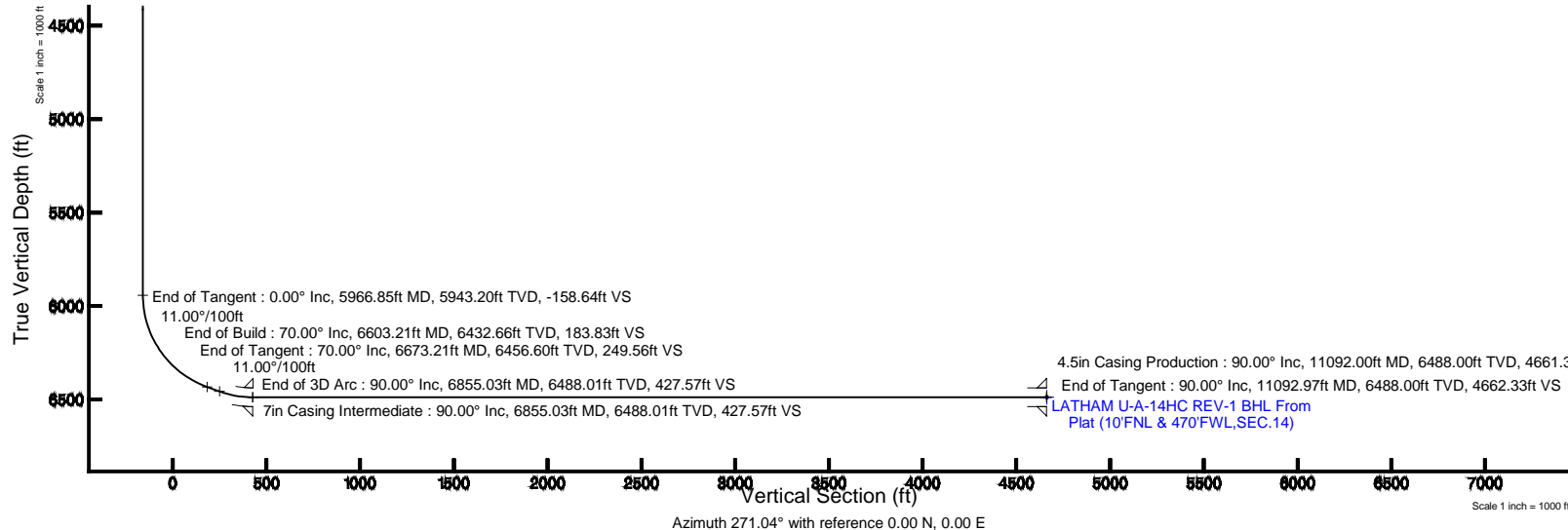
Facility Name			Grid East (US ft)	Grid North (US ft)	Latitude	Longitude
SEC.14-T4N-R63W			3307689.092	1361141.238	40°19'10.121"N	104°23'47.454"W
Slot	Local N (ft)	Local E (ft)	Grid East (US ft)	Grid North (US ft)	Latitude	Longitude
SLOT#01 LATHAM U-A-14HC (194'FNL & 179'FEL, SEC.14)	0.00	0.00	3307689.092	1361141.238	40°19'10.121"N	104°23'47.454"W
RIG (RKB) to Mud line (At Slot: SLOT#01 LATHAM U-A-14HC (194'FNL & 179'FEL, SEC.14))					4621ft	
Mean Sea Level to Mud line (At Slot: SLOT#01 LATHAM U-A-14HC (194'FNL & 179'FEL, SEC.14))					0ft	
RIG (RKB) to Mean Sea Level					4621ft	

Well Profile Data

Design Comment	MD (ft)	Inc (°)	Az (°)	TVD (ft)	Local N (ft)	Local E (ft)	DLS (°/100ft)	VS (ft)
Tie On	17.00	0.000	41.362	17.00	0.00	0.00	0.00	0.00
End of Tangent	1200.00	0.000	41.362	1200.00	0.00	0.00	0.00	0.00
End of Build	1950.00	15.000	41.362	1941.46	73.27	64.51	2.00	-63.17
End of Tangent	2142.89	15.000	41.362	2127.77	110.73	97.49	0.00	-95.47
End of Drop	2892.89	0.000	268.819	2869.24	184.00	162.00	2.00	-158.64
End of Tangent	5966.85	0.000	268.819	5943.20	184.00	162.00	0.00	-158.64
End of Build	6603.21	70.000	268.819	6432.66	176.94	-180.65	11.00	183.83
End of Tangent	6673.21	70.000	268.819	6456.60	175.58	-246.41	0.00	249.56
End of 3D Arc	6855.03	90.000	268.819	6488.01	171.91	-424.53	11.00	427.57
End of Tangent	11092.97	90.000	268.819	6488.00	84.53	-4661.56	0.00	4662.33

Survey Program

Start MD (ft)	End MD (ft)	Tool	Model	Log Name/Comment	Wellbore
17.00	11092.97	NaviTrak	NaviTrak (Standard)		LATHAM U-A-14HC PWB



BGGM (1945.0 to 2015.0) Dip: 66.94° Field: 52753.9 nT
Magnetic North is 8.33 degrees East of True North (at 3/25/2014)

To correct azimuth from Magnetic to True add 8.33 degrees



Planned Wellpath Report

LATHAM U-A-14HC (REV-A.0) PWP

Page 1 of 7



REFERENCE WELLPATH IDENTIFICATION

Operator	BONANZA CREEK OIL COMPANY	Slot	SLOT#01 LATHAM U-A-14HC (194'FNL & 179'FEL,SEC.14)
Area	COLORADO	Well	LATHAM U-A-14HC
Field	WELD COUNTY	Wellbore	LATHAM U-A-14HC PWB
Facility	SEC.14-T4N-R63W		

REPORT SETUP INFORMATION

Projection System	NAD83 / Lambert Colorado SP, Northern Zone (501), US feet	Software System	WellArchitect® 4.0.0
North Reference	True	User	Guenaler
Scale	0.999958	Report Generated	3/25/2014 at 4:26:18 PM
Convergence at slot	n/a	Database/Source file	WA_Denver/LATHAM_U-A-14HC_PWB.xml

WELLPATH LOCATION

	Local coordinates		Grid coordinates		Geographic coordinates	
	North[ft]	East[ft]	Easting[US ft]	Northing[US ft]	Latitude	Longitude
Slot Location	0.00	0.00	3307689.09	1361141.24	40°19'10.121"N	104°23'47.454"W
Facility Reference Pt			3307689.09	1361141.24	40°19'10.121"N	104°23'47.454"W
Field Reference Pt			3327718.19	1377782.99	40°21'52.020"N	104°19'26.040"W

WELLPATH DATUM

Calculation method	Minimum curvature	RIG (RKB) to Facility Vertical Datum	4621.00ft
Horizontal Reference Pt	Slot	RIG (RKB) to Mean Sea Level	4621.00ft
Vertical Reference Pt	RIG (RKB)	RIG (RKB) to Mud Line at Slot (SLOT#01 LATHAM U-A-14HC (194'FNL & 179'FEL,SEC.14))	4621.00ft
MD Reference Pt	RIG (RKB)	Section Origin	N 0.00, E 0.00 ft
Field Vertical Reference	Mean Sea Level	Section Azimuth	271.04°



Planned Wellpath Report

LATHAM U-A-14HC (REV-A.0) PWP

Page 2 of 7



REFERENCE WELLPATH IDENTIFICATION

Operator	BONANZA CREEK OIL COMPANY	Slot	SLOT#01 LATHAM U-A-14HC (194'FNL & 179'FEL,SEC.14)
Area	COLORADO	Well	LATHAM U-A-14HC
Field	WELD COUNTY	Wellbore	LATHAM U-A-14HC PWB
Facility	SEC.14-T4N-R63W		

WELLPATH DATA (121 stations) † = interpolated/extrapolated station

MD [ft]	Inclination [°]	Azimuth [°]	TVD [ft]	Vert Sect [ft]	North [ft]	East [ft]	Latitude	Longitude	DLS [°/100ft]	Comments
0.00†	0.000	41.362	0.00	0.00	0.00	0.00	40°19'10.121"N	104°23'47.454"W	0.00	
17.00	0.000	41.362	17.00	0.00	0.00	0.00	40°19'10.121"N	104°23'47.454"W	0.00	Tie On
117.00†	0.000	41.362	117.00	0.00	0.00	0.00	40°19'10.121"N	104°23'47.454"W	0.00	
217.00†	0.000	41.362	217.00	0.00	0.00	0.00	40°19'10.121"N	104°23'47.454"W	0.00	
317.00†	0.000	41.362	317.00	0.00	0.00	0.00	40°19'10.121"N	104°23'47.454"W	0.00	
417.00†	0.000	41.362	417.00	0.00	0.00	0.00	40°19'10.121"N	104°23'47.454"W	0.00	
517.00†	0.000	41.362	517.00	0.00	0.00	0.00	40°19'10.121"N	104°23'47.454"W	0.00	
617.00†	0.000	41.362	617.00	0.00	0.00	0.00	40°19'10.121"N	104°23'47.454"W	0.00	
717.00†	0.000	41.362	717.00	0.00	0.00	0.00	40°19'10.121"N	104°23'47.454"W	0.00	
817.00†	0.000	41.362	817.00	0.00	0.00	0.00	40°19'10.121"N	104°23'47.454"W	0.00	
917.00†	0.000	41.362	917.00	0.00	0.00	0.00	40°19'10.121"N	104°23'47.454"W	0.00	
1017.00†	0.000	41.362	1017.00	0.00	0.00	0.00	40°19'10.121"N	104°23'47.454"W	0.00	
1117.00†	0.000	41.362	1117.00	0.00	0.00	0.00	40°19'10.121"N	104°23'47.454"W	0.00	
1200.00	0.000	41.362	1200.00	0.00	0.00	0.00	40°19'10.121"N	104°23'47.454"W	0.00	End of Tangent
1217.00†	0.340	41.362	1217.00	-0.03	0.04	0.03	40°19'10.121"N	104°23'47.454"W	2.00	
1317.00†	2.340	41.362	1316.97	-1.55	1.79	1.58	40°19'10.139"N	104°23'47.434"W	2.00	
1417.00†	4.340	41.362	1416.79	-5.32	6.17	5.43	40°19'10.182"N	104°23'47.384"W	2.00	
1517.00†	6.340	41.362	1516.35	-11.34	13.15	11.58	40°19'10.251"N	104°23'47.305"W	2.00	
1617.00†	8.340	41.362	1615.53	-19.60	22.74	20.02	40°19'10.346"N	104°23'47.196"W	2.00	
1717.00†	10.340	41.362	1714.20	-30.11	34.92	30.74	40°19'10.466"N	104°23'47.057"W	2.00	
1817.00†	12.340	41.362	1812.24	-42.83	49.68	43.74	40°19'10.612"N	104°23'46.889"W	2.00	
1917.00†	14.340	41.362	1909.54	-57.76	66.99	58.98	40°19'10.783"N	104°23'46.693"W	2.00	
1950.00	15.000	41.362	1941.46	-63.17	73.27	64.51	40°19'10.845"N	104°23'46.621"W	2.00	End of Build
2017.00†	15.000	41.362	2006.18	-74.39	86.28	75.96	40°19'10.974"N	104°23'46.473"W	0.00	
2117.00†	15.000	41.362	2102.77	-91.14	105.71	93.07	40°19'11.166"N	104°23'46.252"W	0.00	
2142.89	15.000	41.362	2127.77	-95.47	110.73	97.49	40°19'11.215"N	104°23'46.195"W	0.00	End of Tangent
2217.00†	13.518	41.362	2199.60	-107.28	124.44	109.56	40°19'11.351"N	104°23'46.040"W	2.00	
2317.00†	11.518	41.362	2297.22	-121.31	140.70	123.88	40°19'11.511"N	104°23'45.855"W	2.00	
2417.00†	9.518	41.362	2395.54	-133.12	154.40	135.94	40°19'11.647"N	104°23'45.699"W	2.00	
2517.00†	7.518	41.362	2494.43	-142.70	165.52	145.73	40°19'11.757"N	104°23'45.573"W	2.00	



Planned Wellpath Report

LATHAM U-A-14HC (REV-A.0) PWP

Page 3 of 7



REFERENCE WELLPATH IDENTIFICATION			
Operator	BONANZA CREEK OIL COMPANY	Slot	SLOT#01 LATHAM U-A-14HC (194'FNL & 179'FEL,SEC.14)
Area	COLORADO	Well	LATHAM U-A-14HC
Field	WELD COUNTY	Wellbore	LATHAM U-A-14HC PWB
Facility	SEC.14-T4N-R63W		

WELLPATH DATA (121 stations) † = interpolated/extrapolated station

MD [ft]	Inclination [°]	Azimuth [°]	TVD [ft]	Vert Sect [ft]	North [ft]	East [ft]	Latitude	Longitude	DLS [°/100ft]	Comments
2617.00†	5.518	41.362	2593.78	-150.05	174.04	153.23	40°19'11.841"N	104°23'45.476"W	2.00	
2717.00†	3.518	41.362	2693.46	-155.14	179.95	158.43	40°19'11.899"N	104°23'45.409"W	2.00	
2817.00†	1.518	41.362	2793.36	-157.99	183.25	161.34	40°19'11.932"N	104°23'45.371"W	2.00	
2892.89	0.000	268.819	2869.24	-158.64	184.00	162.00	40°19'11.939"N	104°23'45.363"W	2.00	End of Drop
2917.00†	0.000	268.819	2893.35	-158.64	184.00	162.00	40°19'11.939"N	104°23'45.363"W	0.00	
3017.00†	0.000	268.819	2993.35	-158.64	184.00	162.00	40°19'11.939"N	104°23'45.363"W	0.00	
3117.00†	0.000	268.819	3093.35	-158.64	184.00	162.00	40°19'11.939"N	104°23'45.363"W	0.00	
3217.00†	0.000	268.819	3193.35	-158.64	184.00	162.00	40°19'11.939"N	104°23'45.363"W	0.00	
3317.00†	0.000	268.819	3293.35	-158.64	184.00	162.00	40°19'11.939"N	104°23'45.363"W	0.00	
3417.00†	0.000	268.819	3393.35	-158.64	184.00	162.00	40°19'11.939"N	104°23'45.363"W	0.00	
3517.00†	0.000	268.819	3493.35	-158.64	184.00	162.00	40°19'11.939"N	104°23'45.363"W	0.00	
3617.00†	0.000	268.819	3593.35	-158.64	184.00	162.00	40°19'11.939"N	104°23'45.363"W	0.00	
3717.00†	0.000	268.819	3693.35	-158.64	184.00	162.00	40°19'11.939"N	104°23'45.363"W	0.00	
3817.00†	0.000	268.819	3793.35	-158.64	184.00	162.00	40°19'11.939"N	104°23'45.363"W	0.00	
3917.00†	0.000	268.819	3893.35	-158.64	184.00	162.00	40°19'11.939"N	104°23'45.363"W	0.00	
4017.00†	0.000	268.819	3993.35	-158.64	184.00	162.00	40°19'11.939"N	104°23'45.363"W	0.00	
4117.00†	0.000	268.819	4093.35	-158.64	184.00	162.00	40°19'11.939"N	104°23'45.363"W	0.00	
4217.00†	0.000	268.819	4193.35	-158.64	184.00	162.00	40°19'11.939"N	104°23'45.363"W	0.00	
4317.00†	0.000	268.819	4293.35	-158.64	184.00	162.00	40°19'11.939"N	104°23'45.363"W	0.00	
4417.00†	0.000	268.819	4393.35	-158.64	184.00	162.00	40°19'11.939"N	104°23'45.363"W	0.00	
4517.00†	0.000	268.819	4493.35	-158.64	184.00	162.00	40°19'11.939"N	104°23'45.363"W	0.00	
4617.00†	0.000	268.819	4593.35	-158.64	184.00	162.00	40°19'11.939"N	104°23'45.363"W	0.00	
4717.00†	0.000	268.819	4693.35	-158.64	184.00	162.00	40°19'11.939"N	104°23'45.363"W	0.00	
4817.00†	0.000	268.819	4793.35	-158.64	184.00	162.00	40°19'11.939"N	104°23'45.363"W	0.00	
4917.00†	0.000	268.819	4893.35	-158.64	184.00	162.00	40°19'11.939"N	104°23'45.363"W	0.00	
5017.00†	0.000	268.819	4993.35	-158.64	184.00	162.00	40°19'11.939"N	104°23'45.363"W	0.00	
5117.00†	0.000	268.819	5093.35	-158.64	184.00	162.00	40°19'11.939"N	104°23'45.363"W	0.00	
5217.00†	0.000	268.819	5193.35	-158.64	184.00	162.00	40°19'11.939"N	104°23'45.363"W	0.00	
5317.00†	0.000	268.819	5293.35	-158.64	184.00	162.00	40°19'11.939"N	104°23'45.363"W	0.00	
5417.00†	0.000	268.819	5393.35	-158.64	184.00	162.00	40°19'11.939"N	104°23'45.363"W	0.00	



Planned Wellpath Report

LATHAM U-A-14HC (REV-A.0) PWP

Page 4 of 7



REFERENCE WELLPATH IDENTIFICATION

Operator	BONANZA CREEK OIL COMPANY	Slot	SLOT#01 LATHAM U-A-14HC (194'FNL & 179'FEL,SEC.14)
Area	COLORADO	Well	LATHAM U-A-14HC
Field	WELD COUNTY	Wellbore	LATHAM U-A-14HC PWB
Facility	SEC.14-T4N-R63W		

WELLPATH DATA (121 stations) † = interpolated/extrapolated station

MD [ft]	Inclination [°]	Azimuth [°]	TVD [ft]	Vert Sect [ft]	North [ft]	East [ft]	Latitude	Longitude	DLS [°/100ft]	Comments
5517.00†	0.000	268.819	5493.35	-158.64	184.00	162.00	40°19'11.939"N	104°23'45.363"W	0.00	
5617.00†	0.000	268.819	5593.35	-158.64	184.00	162.00	40°19'11.939"N	104°23'45.363"W	0.00	
5717.00†	0.000	268.819	5693.35	-158.64	184.00	162.00	40°19'11.939"N	104°23'45.363"W	0.00	
5817.00†	0.000	268.819	5793.35	-158.64	184.00	162.00	40°19'11.939"N	104°23'45.363"W	0.00	
5917.00†	0.000	268.819	5893.35	-158.64	184.00	162.00	40°19'11.939"N	104°23'45.363"W	0.00	
5966.85	0.000	268.819	5943.20	-158.64	184.00	162.00	40°19'11.939"N	104°23'45.363"W	0.00	End of Tangent
6017.00†	5.517	268.819	5993.27	-156.23	183.95	159.59	40°19'11.939"N	104°23'45.394"W	11.00	
6117.00†	16.517	268.819	6091.28	-137.16	183.56	140.51	40°19'11.935"N	104°23'45.640"W	11.00	
6217.00†	27.517	268.819	6183.85	-99.76	182.79	103.09	40°19'11.927"N	104°23'46.123"W	11.00	
6317.00†	38.517	268.819	6267.57	-45.39	181.66	48.69	40°19'11.916"N	104°23'46.825"W	11.00	
6417.00†	49.517	268.819	6339.37	23.94	180.23	-20.67	40°19'11.902"N	104°23'47.721"W	11.00	
6517.00†	60.517	268.819	6396.62	105.68	178.55	-102.46	40°19'11.885"N	104°23'48.777"W	11.00	
6603.21	70.000	268.819	6432.66	183.83	176.94	-180.65	40°19'11.869"N	104°23'49.786"W	11.00	End of Build
6617.00†	70.000	268.819	6437.37	196.78	176.67	-193.61	40°19'11.867"N	104°23'49.953"W	0.00	
6673.21	70.000	268.819	6456.60	249.56	175.58	-246.41	40°19'11.856"N	104°23'50.635"W	0.00	End of Tangent
6717.00†	74.817	268.819	6469.83	291.26	174.72	-288.14	40°19'11.848"N	104°23'51.174"W	11.00	
6817.00†	85.817	268.819	6486.62	389.61	172.69	-386.54	40°19'11.827"N	104°23'52.444"W	11.00	
6855.03	90.000	268.819	6488.01	427.57	171.91	-424.53	40°19'11.820"N	104°23'52.935"W	11.00	End of 3D Arc
6917.00†	90.000	268.819	6488.01	489.50	170.63	-486.48	40°19'11.807"N	104°23'53.735"W	0.00	
7017.00†	90.000	268.819	6488.01	589.42	168.57	-586.46	40°19'11.787"N	104°23'55.025"W	0.00	
7117.00†	90.000	268.819	6488.01	689.35	166.51	-686.44	40°19'11.766"N	104°23'56.316"W	0.00	
7217.00†	90.000	268.819	6488.01	789.27	164.45	-786.42	40°19'11.746"N	104°23'57.607"W	0.00	
7317.00†	90.000	268.819	6488.01	889.20	162.38	-886.40	40°19'11.725"N	104°23'58.897"W	0.00	
7417.00†	90.000	268.819	6488.01	989.12	160.32	-986.38	40°19'11.705"N	104°24'00.188"W	0.00	
7517.00†	90.000	268.819	6488.01	1089.05	158.26	-1086.36	40°19'11.685"N	104°24'01.479"W	0.00	
7617.00†	90.000	268.819	6488.01	1188.97	156.20	-1186.34	40°19'11.664"N	104°24'02.770"W	0.00	
7717.00†	90.000	268.819	6488.01	1288.90	154.14	-1286.31	40°19'11.644"N	104°24'04.060"W	0.00	
7817.00†	90.000	268.819	6488.01	1388.82	152.07	-1386.29	40°19'11.623"N	104°24'05.351"W	0.00	
7917.00†	90.000	268.819	6488.01	1488.75	150.01	-1486.27	40°19'11.603"N	104°24'06.642"W	0.00	
8017.00†	90.000	268.819	6488.01	1588.67	147.95	-1586.25	40°19'11.583"N	104°24'07.933"W	0.00	



Planned Wellpath Report

LATHAM U-A-14HC (REV-A.0) PWP

Page 5 of 7



REFERENCE WELLPATH IDENTIFICATION			
Operator	BONANZA CREEK OIL COMPANY	Slot	SLOT#01 LATHAM U-A-14HC (194'FNL & 179'FEL,SEC.14)
Area	COLORADO	Well	LATHAM U-A-14HC
Field	WELD COUNTY	Wellbore	LATHAM U-A-14HC PWB
Facility	SEC.14-T4N-R63W		

WELLPATH DATA (121 stations) † = interpolated/extrapolated station										
MD [ft]	Inclination [°]	Azimuth [°]	TVD [ft]	Vert Sect [ft]	North [ft]	East [ft]	Latitude	Longitude	DLS [°/100ft]	Comments
8117.00†	90.000	268.819	6488.01	1688.60	145.89	-1686.23	40°19'11.562"N	104°24'09.223"W	0.00	
8217.00†	90.000	268.819	6488.01	1788.52	143.83	-1786.21	40°19'11.542"N	104°24'10.514"W	0.00	
8317.00†	90.000	268.819	6488.01	1888.45	141.77	-1886.19	40°19'11.521"N	104°24'11.805"W	0.00	
8417.00†	90.000	268.819	6488.01	1988.37	139.70	-1986.17	40°19'11.501"N	104°24'13.096"W	0.00	
8517.00†	90.000	268.819	6488.01	2088.30	137.64	-2086.14	40°19'11.480"N	104°24'14.386"W	0.00	
8617.00†	90.000	268.819	6488.01	2188.22	135.58	-2186.12	40°19'11.460"N	104°24'15.677"W	0.00	
8717.00†	90.000	268.819	6488.00	2288.15	133.52	-2286.10	40°19'11.439"N	104°24'16.968"W	0.00	
8817.00†	90.000	268.819	6488.00	2388.07	131.46	-2386.08	40°19'11.419"N	104°24'18.258"W	0.00	
8917.00†	90.000	268.819	6488.00	2488.00	129.40	-2486.06	40°19'11.398"N	104°24'19.549"W	0.00	
9017.00†	90.000	268.819	6488.00	2587.92	127.33	-2586.04	40°19'11.378"N	104°24'20.840"W	0.00	
9117.00†	90.000	268.819	6488.00	2687.85	125.27	-2686.02	40°19'11.357"N	104°24'22.131"W	0.00	
9217.00†	90.000	268.819	6488.00	2787.77	123.21	-2786.00	40°19'11.337"N	104°24'23.421"W	0.00	
9317.00†	90.000	268.819	6488.00	2887.70	121.15	-2885.97	40°19'11.317"N	104°24'24.712"W	0.00	
9417.00†	90.000	268.819	6488.00	2987.62	119.09	-2985.95	40°19'11.296"N	104°24'26.003"W	0.00	
9517.00†	90.000	268.819	6488.00	3087.55	117.03	-3085.93	40°19'11.276"N	104°24'27.294"W	0.00	
9617.00†	90.000	268.819	6488.00	3187.47	114.96	-3185.91	40°19'11.255"N	104°24'28.584"W	0.00	
9717.00†	90.000	268.819	6488.00	3287.40	112.90	-3285.89	40°19'11.235"N	104°24'29.875"W	0.00	
9817.00†	90.000	268.819	6488.00	3387.32	110.84	-3385.87	40°19'11.214"N	104°24'31.166"W	0.00	
9917.00†	90.000	268.819	6488.00	3487.25	108.78	-3485.85	40°19'11.193"N	104°24'32.456"W	0.00	
10017.00†	90.000	268.819	6488.00	3587.17	106.72	-3585.83	40°19'11.173"N	104°24'33.747"W	0.00	
10117.00†	90.000	268.819	6488.00	3687.10	104.66	-3685.80	40°19'11.152"N	104°24'35.038"W	0.00	
10217.00†	90.000	268.819	6488.00	3787.02	102.59	-3785.78	40°19'11.132"N	104°24'36.329"W	0.00	
10317.00†	90.000	268.819	6488.00	3886.95	100.53	-3885.76	40°19'11.111"N	104°24'37.619"W	0.00	
10417.00†	90.000	268.819	6488.00	3986.87	98.47	-3985.74	40°19'11.091"N	104°24'38.910"W	0.00	
10517.00†	90.000	268.819	6488.00	4086.80	96.41	-4085.72	40°19'11.070"N	104°24'40.201"W	0.00	
10617.00†	90.000	268.819	6488.00	4186.72	94.35	-4185.70	40°19'11.050"N	104°24'41.492"W	0.00	
10717.00†	90.000	268.819	6488.00	4286.65	92.28	-4285.68	40°19'11.029"N	104°24'42.782"W	0.00	
10817.00†	90.000	268.819	6488.00	4386.57	90.22	-4385.66	40°19'11.009"N	104°24'44.073"W	0.00	
10917.00†	90.000	268.819	6488.00	4486.50	88.16	-4485.63	40°19'10.988"N	104°24'45.364"W	0.00	
11017.00†	90.000	268.819	6488.00	4586.42	86.10	-4585.61	40°19'10.968"N	104°24'46.654"W	0.00	



Planned Wellpath Report

LATHAM U-A-14HC (REV-A.0) PWP

Page 6 of 7



REFERENCE WELLPATH IDENTIFICATION

Operator	BONANZA CREEK OIL COMPANY	Slot	SLOT#01 LATHAM U-A-14HC (194'FNL & 179'FEL,SEC.14)
Area	COLORADO	Well	LATHAM U-A-14HC
Field	WELD COUNTY	Wellbore	LATHAM U-A-14HC PWB
Facility	SEC.14-T4N-R63W		

WELLPATH DATA (121 stations)

MD [ft]	Inclination [°]	Azimuth [°]	TVD [ft]	Vert Sect [ft]	North [ft]	East [ft]	Latitude	Longitude	DLS [°/100ft]	Comments
11092.97	90.000	268.819	6488.00 ¹	4662.33	84.53	-4661.56	40°19'10.952"N	104°24'47.635"W	0.00	End of Tangent

HOLE & CASING SECTIONS - Ref Wellbore: LATHAM U-A-14HC PWB Ref Wellpath: LATHAM U-A-14HC (REV-A.0) PWP

String/Diameter	Start MD [ft]	End MD [ft]	Interval [ft]	Start TVD [ft]	End TVD [ft]	Start N/S [ft]	Start E/W [ft]	End N/S [ft]	End E/W [ft]
7in Casing Intermediate	17.00	6855.03	6838.03	17.00	6488.01	0.00	0.00	171.91	-424.53
4.5in Casing Production	17.00	11092.00	11075.00	17.00	6488.00	0.00	0.00	84.55	-4660.60

TARGETS

Name	MD [ft]	TVD [ft]	North [ft]	East [ft]	Grid East [US ft]	Grid North [US ft]	Latitude	Longitude	Shape
LATHAM SECTION 14		0.00	-0.02	0.00	3307689.09	1361141.22	40°19'10.121"N	104°23'47.454"W	polygon
LATHAM HARDLINES (460'FWL/FEL)		6326.00	-0.02	0.00	3307689.09	1361141.22	40°19'10.121"N	104°23'47.454"W	polygon
1) LATHAM U-A-14HC REV-1 BHL From Plat (10'FNL & 470'FWL,SEC.14)	11092.97	6488.00	84.53	-4661.56	3303027.04	1361167.76	40°19'10.952"N	104°24'47.635"W	point

SURVEY PROGRAM - Ref Wellbore: LATHAM U-A-14HC PWB Ref Wellpath: LATHAM U-A-14HC (REV-A.0) PWP

Start MD [ft]	End MD [ft]	Positional Uncertainty Model	Log Name/Comment	Wellbore
17.00	11092.97	NaviTrak (Standard)		LATHAM U-A-14HC PWB



Planned Wellpath Report

LATHAM U-A-14HC (REV-A.0) PWP

Page 7 of 7



REFERENCE WELLPATH IDENTIFICATION			
Operator	BONANZA CREEK OIL COMPANY	Slot	SLOT#01 LATHAM U-A-14HC (194'FNL & 179'FEL,SEC.14)
Area	COLORADO	Well	LATHAM U-A-14HC
Field	WELD COUNTY	Wellbore	LATHAM U-A-14HC PWB
Facility	SEC.14-T4N-R63W		

DESIGN COMMENTS				
MD [ft]	Inclination [°]	Azimuth [°]	TVD [ft]	Comment
17.00	0.000	41.362	17.00	Tie On
1200.00	0.000	41.362	1200.00	End of Tangent
1950.00	15.000	41.362	1941.46	End of Build
2142.89	15.000	41.362	2127.77	End of Tangent
2892.89	0.000	268.819	2869.24	End of Drop
5966.85	0.000	268.819	5943.20	End of Tangent
6603.21	70.000	268.819	6432.66	End of Build
6673.21	70.000	268.819	6456.60	End of Tangent
6855.03	90.000	268.819	6488.01	End of 3D Arc
11092.97	90.000	268.819	6488.00	End of Tangent