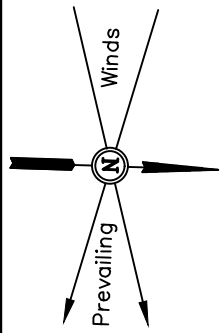


WPX Energy Rocky Mountain, LLC

PLAT #1_LOCATION LAYOUT FOR EXISTING GM 313-12 FRAC PAD

SECTION 12, T7S, R96W, 6th P.M.



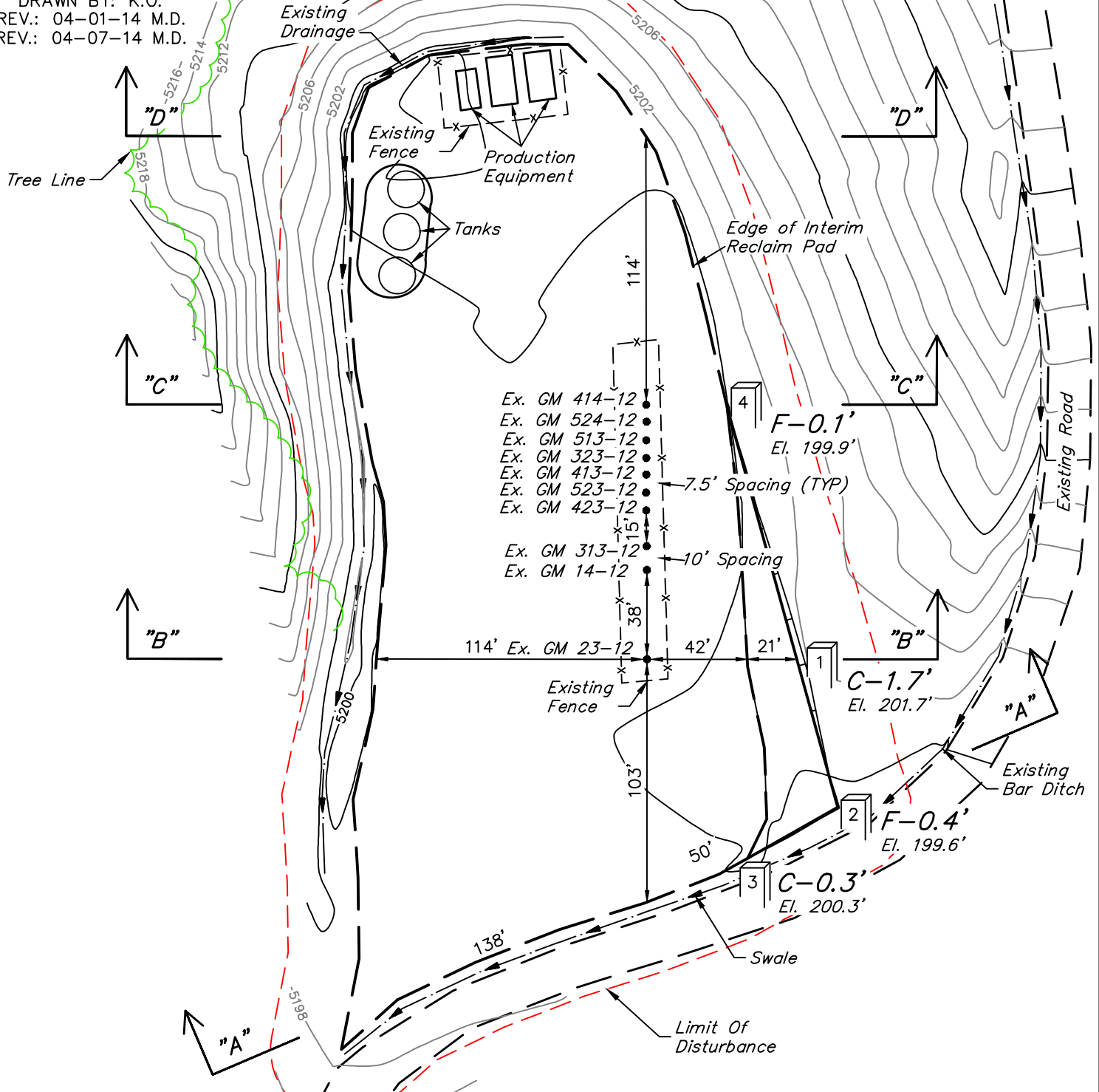
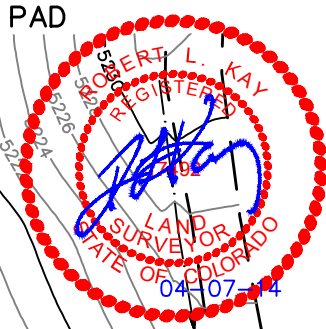
SCALE: 1" = 60'

DATE: 06-03-13

DRAWN BY: K.O.

REV.: 04-01-14 M.D.

REV.: 04-07-14 M.D.



FINISHED GRADE ELEVATION = 5200.0'

UINTAH ENGINEERING & LAND SURVEYING

85 So. 200 East * Vernal, Utah 84078 * (435) 789-1017

WPX Energy Rocky Mountain, LLC

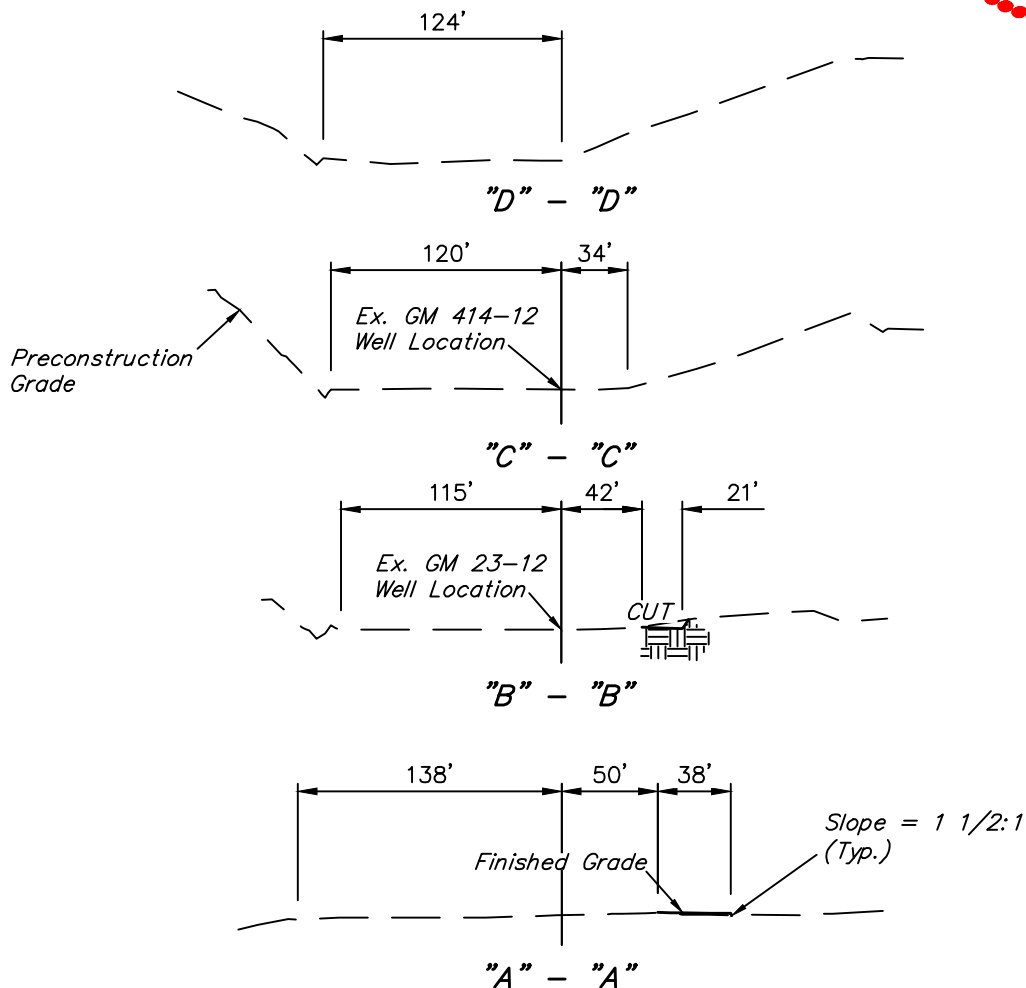
PLAT #2_CROSS SECTIONS FOR EXISTING GM 313-12 FRAC PAD SECTION 12, T7S, R96W, 6th P.M.

1" = 40'
X-Section
Scale
1" = 100'

DATE: 04-01-14

DRAWN BY: M.D.

REV.: 04-07-14 M.D.



APPROXIMATE ACREAGE

WELL SITE DISTURBANCE = ± 2.172 ACRES
TOTAL = ± 2.172 ACRES

* NOTE:
FILL QUANTITY INCLUDES
5% FOR COMPACTION

APPROXIMATE YARDAGES

(6") Topsoil Stripping = 70 Cu. Yds.
(New Construction Only)
Remaining Location = 20 Cu. Yds.
TOTAL CUT = 90 CU. YDS.
FILL = 30 CU. YDS.

EXCESS MATERIAL = 60 Cu. Yds.
Topsoil = 70 Cu. Yds.
DEFECIT UNBALANCE = <10> Cu. Yds.
(After Interim Rehabilitation)

UINTAH ENGINEERING & LAND SURVEYING
85 So. 200 East * Vernal, Utah 84078 * (435) 789-1017