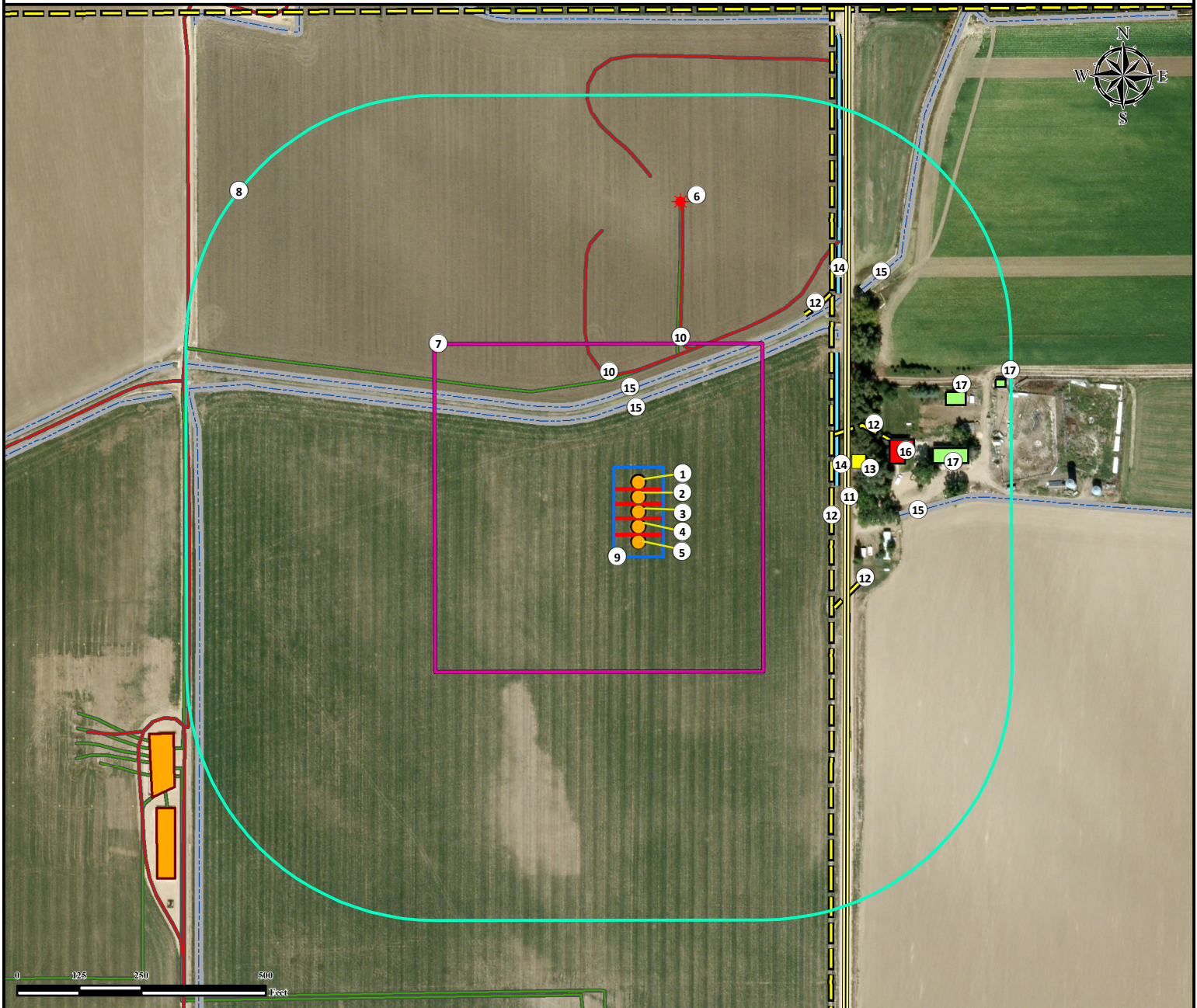


# Location Drawing

## D O U T H I T 3 9 N - 2 7 H Z

### Horizontal Multi Well Pad

NE¼ SE¼ SECTION 26, TOWNSHIP 3 NORTH, RANGE 68 WEST OF THE 6TH PRINCIPAL MERIDIAN



1. Proposed Well DOUTHIT 40N-27HZ.
2. Proposed Well DOUTHIT 9C-27HZ.
3. Proposed Well DOUTHIT 39N-27HZ.
4. Proposed Well DOUTHIT 16C-27HZ.
5. Proposed Well DOUTHIT STATE 38N-27HZ.
6. Existing Well DOUTHIT 32-26HZ is ±630' NE.
7. Operational Disturbance Area.

8. 500' Radius.
9. Pump Jack Operations Area.
10. Private Roads are ±280' N and ±348' NE.
11. County Road 11 is ±420' E.
12. Powerlines are ±387' E, ±422' NE, and ±437' SE.
13. Electrical Box is ±453' NE.

14. Ditches are ±402' E and ±446' E.
15. Concrete Ditches are ±159' E, ±212' N, ±239' N, and ±634' NE.
16. Building Unit is ±514' NE.
17. Buildings are ±600' NE, ±653' NE, and ±760' NE.

<b>Legend</b>	Proposed Well	Disturbance Area	Private Road
Existing Well	500' Radius	Building	Public Road
Electrical Box	Building Unit	Underground Pipeline	Powerline
Facility Enclosure	Pump Jack Operations Area	Ditch	Concrete Ditch

#### Reference Location

\*\* All measurements are made from Reference Well DOUTHIT 39N-27HZ \*\*  
 Lat: 40.194337° Long: -104.962120° (NAD83)  
 Elevation: 4926 Feet

Surface Use: Irrigated Crop

Nearest Building Unit: ±514' NE

Prepared for:

**Anadarko**  
 Petroleum Corporation  
**KERR-MCGEE OIL & GAS ONSHORE LP**



Use our resources to find yours!  
[www.petro-fs.com](http://www.petro-fs.com)  
 (303) 928-7128

Field Date: 11/20/2013  
 Drafting Date: 03/31/2014  
 Drafter: DRF  
 Revision: 3

Data Sources:

- Aerial courtesy of Anadarko Petroleum Corporation (2010)