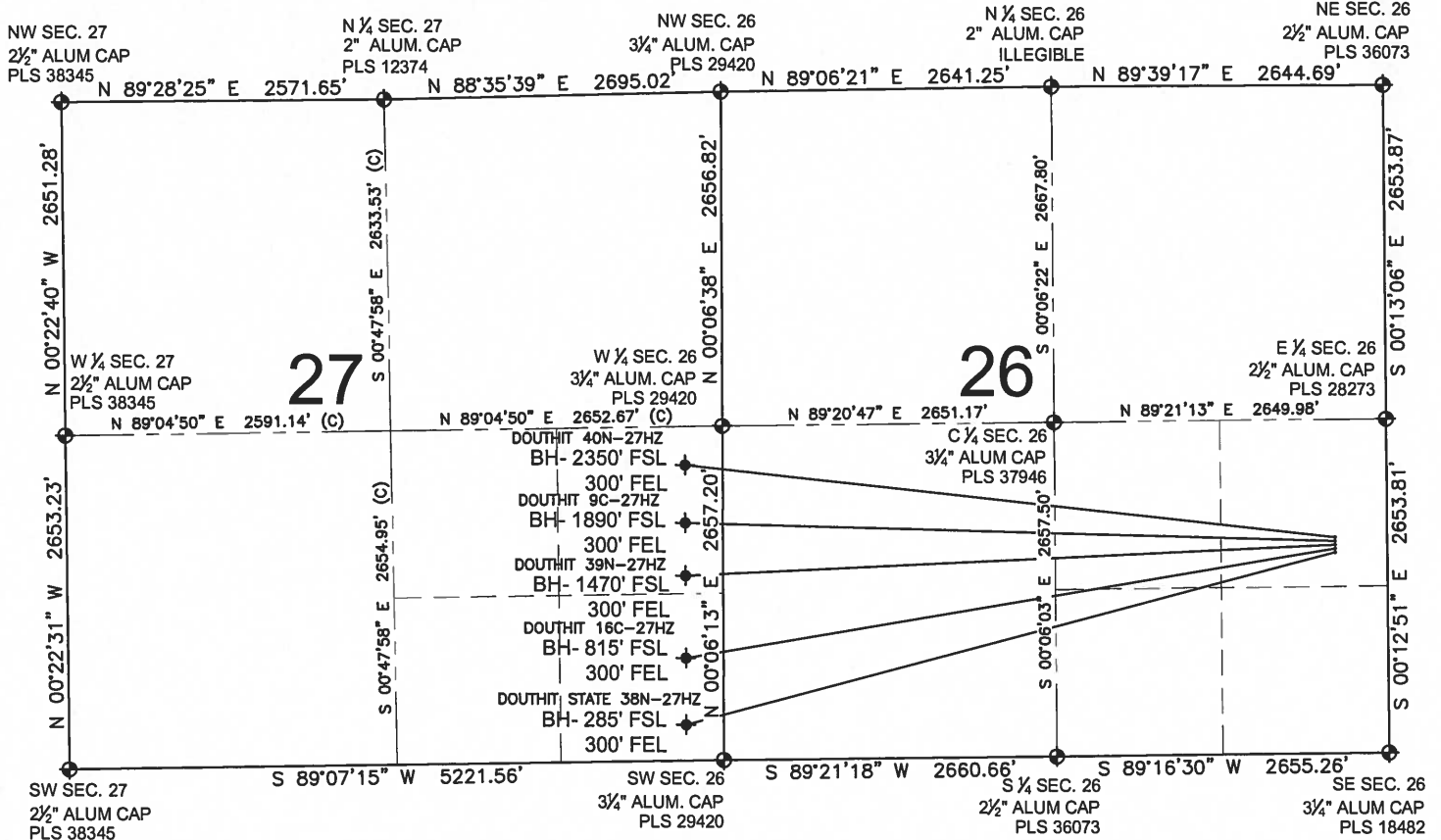


DOUTHIT 39N-27HZ MULTI-WELL PLAN

SECTION 26, TOWNSHIP 3 NORTH, RANGE 68 WEST, 6TH P.M.



NOTES:

DOUTHIT STATE 38N-27HZ TO BE AT 1598' FSL, 416' FEL.
 BOTTOM HOLE AT 285' FSL & 300' FEL. SEC. 27
 DOUTHIT 16C-27HZ TO BE AT 1628' FSL, 416' FEL.
 BOTTOM HOLE AT 815' FSL & 300' FEL. SEC. 27
 DOUTHIT 39N-27HZ TO BE AT 1658' FSL, 416' FEL.
 BOTTOM HOLE AT 1470' FSL & 300' FEL. SEC. 27
 DOUTHIT 9C-27HZ TO BE AT 1688' FSL, 416' FEL.
 BOTTOM HOLE AT 1890' FSL & 300' FEL. SEC. 27
 DOUTHIT 40N-27HZ TO BE AT 1718' FSL, 416' FEL.
 BOTTOM HOLE AT 2350' FSL & 300' FEL. SEC. 27

LEGEND

= EXISTING MONUMENT
 = BOTTOM HOLE
 BH= BOTTOM HOLE
 = PROPOSED WELL
 = EXISTING WELL

PREPARED BY:



KERR-MCGEE OIL & GAS ONSHORE LP

FIELD DATE:
11-20-13

DRAWING DATE:
03-31-14

SURFACE LOCATION:

NE 1/4, SE 1/4, SEC. 26, T3N, R68W, 6TH P.M.
 WELD COUNTY, COLORADO

