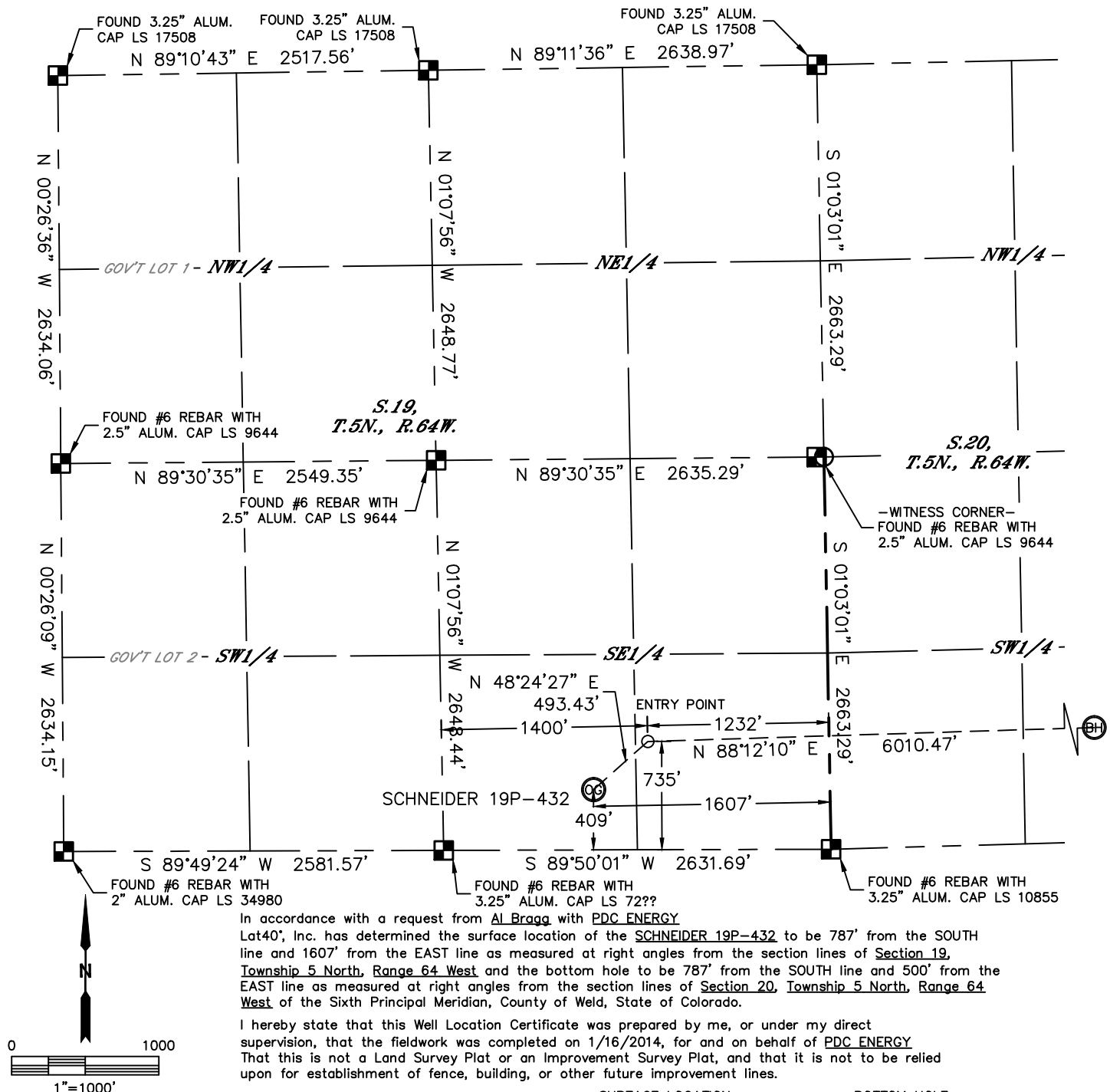


Lat40°, Inc. 1635 Foxtrail Drive, Suite 325 Loveland, CO 970-776-3321



WELL LOCATION CERTIFICATE

THIS MAP DOES NOT REPRESENT A BOUNDARY SURVEY

SECTION: 19
TOWNSHIP: 5N
RANGE: 64W



NOTE:

- 1) Bearings shown are Grid Bearings of the Colorado State Plane Coordinate System, North Zone, North American Datum 1983/2007. The lineal dimensions as contained herein are based upon the "U.S. Survey Foot."
- 2) Ground elevations are based on an observed GPS elevation (NAVD 1988 DATUM).
- 3) IMPROVEMENTS: See LOCATION DRAWING for all visible improvements within 500' of disturbed area.
- 4) SURFACE USE: RANGE LAND
- 5) INSTRUMENT OPERATOR: BRIAN ROTTINGHAUS
- 6) NEAREST CULTURAL ITEMS:
BUILDING: 530' SW
BUILDING UNIT: 535' NW
HIGH OCCUPANCY BUILDING UNIT: 5280'+
DESIGNATED OUTSIDE ACTIVITY AREA: 5280'+
PUBLIC ROAD: (COUNTY ROAD 54) 399' S
ABOVEGROUND UTILITY: 356' S
RAILROAD: ±1056' NW
PROPERTY LINE: 409' S
- LEGEND
-  = ALIQUOT MONUMENT AS DE
 = CALCULATED POSITION

SURFACE LOCATION

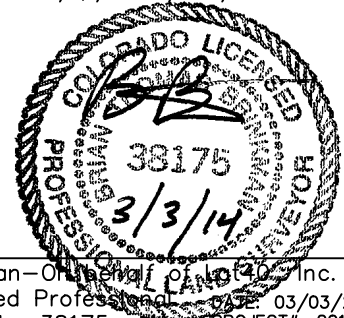
LAT: 40.37844°N
LONG: 104.58900°W
PDOP: 3.4
ELEV: 4652'
1/4,1/4: SW1/4SE1/4

ENTRY POINT

LAT: 40.37933°N
LONG: 104.58767°W
1/4,1/4: SE1/4SE1/4

BOTTOM HOLE

LAT: 40.37967°N
LONG: 104.56610°W
1/4,1/4: SE1/4SE1/4



SHEET 1 OF 2

Brian T. Brinkman—Owner of LAND 40, Inc.
Colorado Licensed Professional Surveyor No. 38175
03/03/2014
PROJECT#: 2013130

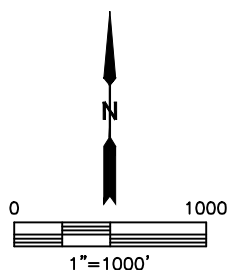
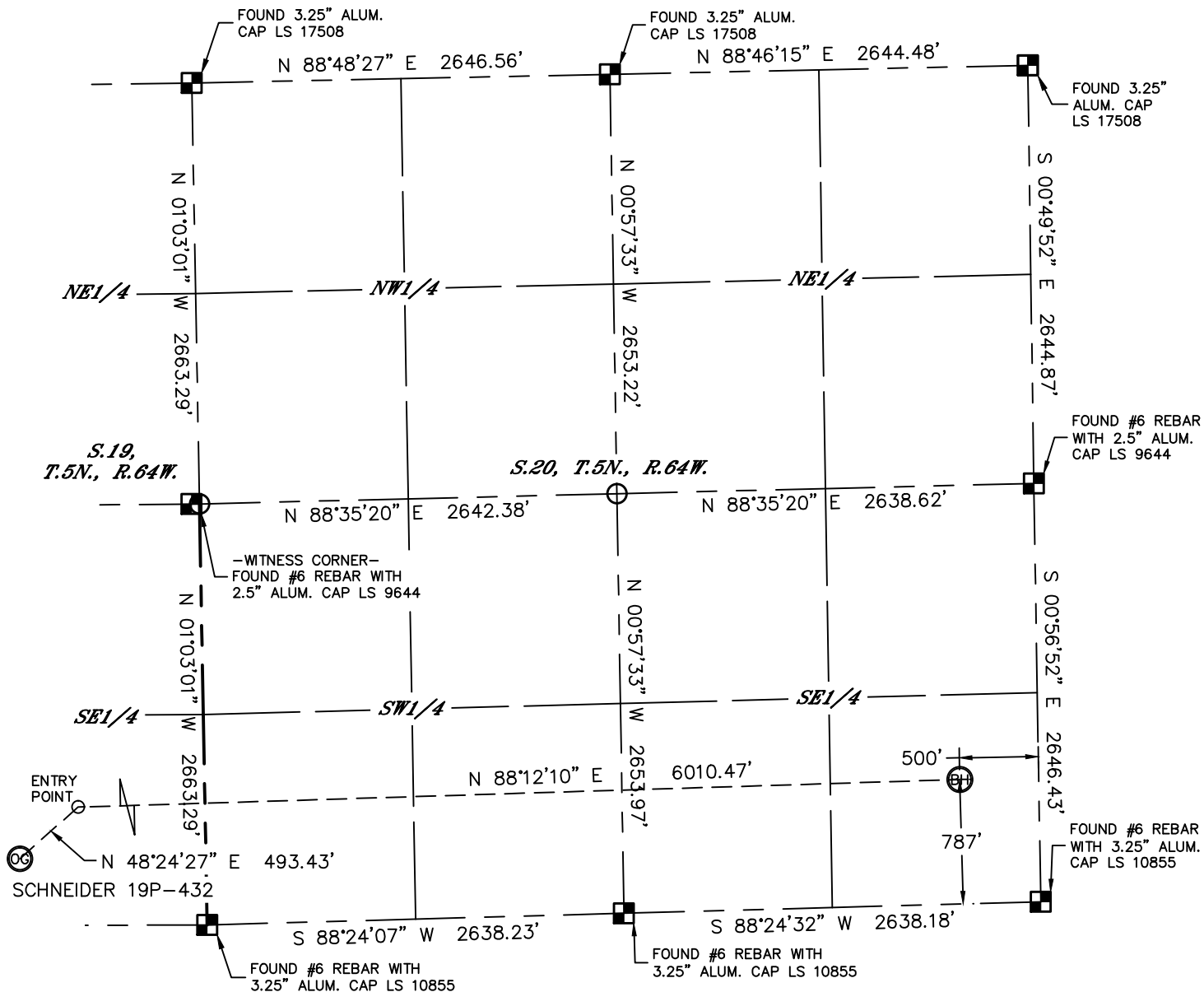


Lat40°, Inc. 1635 Foxtrail Drive, Suite 325 Loveland, CO 970-776-3321

WELL LOCATION CERTIFICATE

THIS MAP DOES NOT REPRESENT A BOUNDARY SURVEY

SECTION: 19
TOWNSHIP: 5N
RANGE: 64W



LEGEND

- = ALIQUOT MONUMENT AS DESCRIBED
- = CALCULATED POSITION

SHEET 2 OF 2

Brian T. Brinkman—Owner, Lat40°, Inc.
Colorado Licensed Professional Land Surveyor No. 38175
DATE: 03/03/2014
PROJECT#: 2013130

