



**Scientific
Drilling**

Survey Certification

7327 West Barton Road
Casper, WY 82604
(307)-472-6621 Fax (307) 472-5439

Operator	<u>KP Kauffman Co, Inc.</u>
Well Name & No.	<u>David Howard #6</u>
County & State	<u>Weld County, CO</u>
SDI Job No.	<u>411213K94268</u>
Rig	<u>Ground Level</u>
Survey Date	<u>18-Dec-2013</u>

I, Steven F. Gottschalk, having personal knowledge of all the facts, hereby certify that the attached directional survey run from a measured depth of 0 feet to a measured depth of 4969.06 feet is true and correct as determined from all available records.

Signature

3-Feb-2014

Date

Steven F. Gottschalk

Rockies Region Well Planner

Scientific Drilling - Rocky Mountain District

KP Kauffman Co, Inc.

Weld County, CO

David Howard

David Howard #6

OH

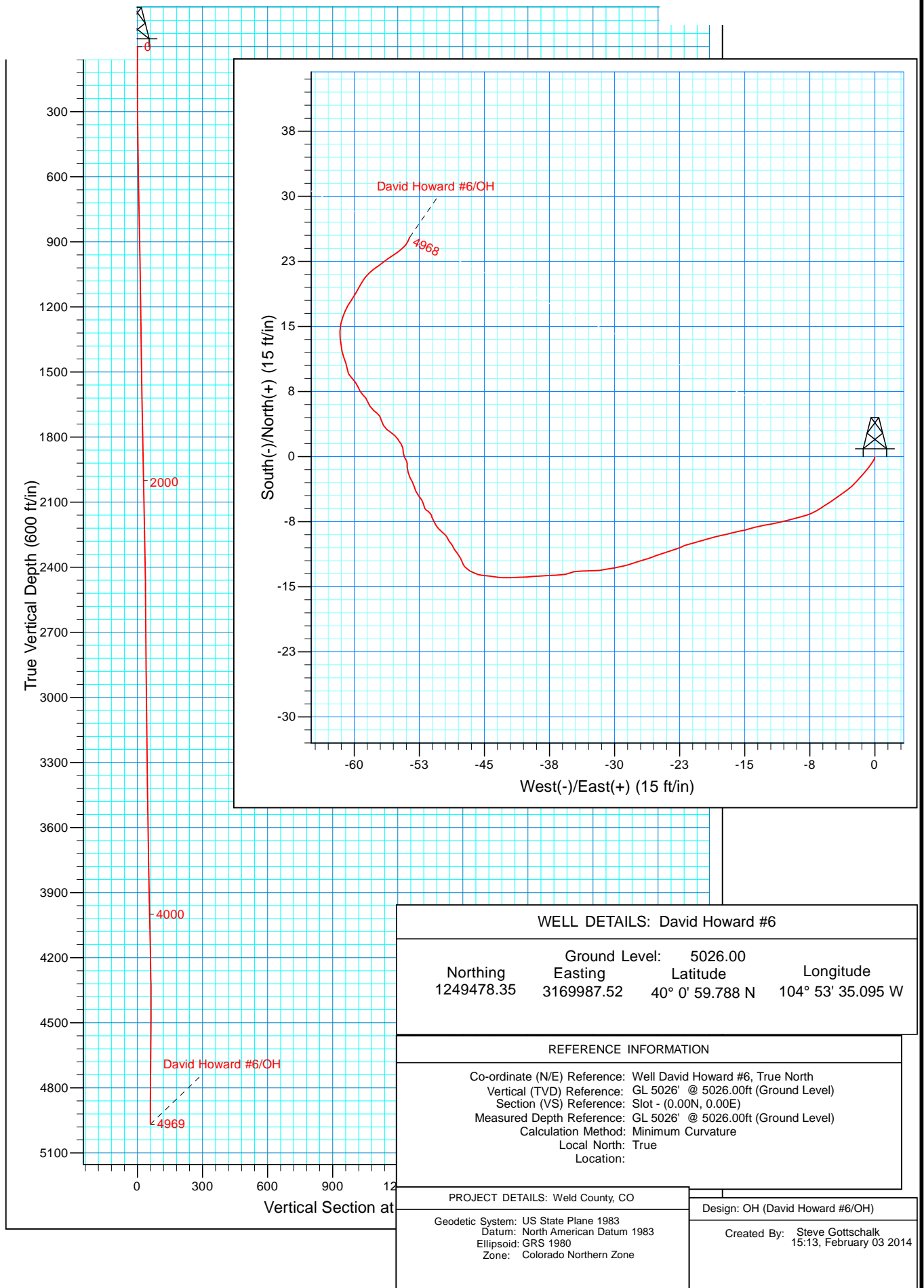
Design: OH

Standard Survey Report

03 February, 2014



Project: Weld County, CO
Site: David Howard
Well: David Howard #6



Scientific Drilling International

Survey Report

Company:	KP Kauffman Co, Inc.	Local Co-ordinate Reference:	Well David Howard #6
Project:	Weld County, CO	TVD Reference:	GL 5026' @ 5026.00ft (Ground Level)
Site:	David Howard	MD Reference:	GL 5026' @ 5026.00ft (Ground Level)
Well:	David Howard #6	North Reference:	True
Wellbore:	OH	Survey Calculation Method:	Minimum Curvature
Design:	OH	Database:	Casper District

Project	Weld County, CO		
Map System:	US State Plane 1983	System Datum:	Mean Sea Level
Geo Datum:	North American Datum 1983		
Map Zone:	Colorado Northern Zone		

Site	David Howard				
Site Position:		Northing:	1,249,478.35 usft	Latitude:	40° 0' 59.788 N
From:	Lat/Long	Easting:	3,169,987.52 usft	Longitude:	104° 53' 35.095 W
Position Uncertainty:	0.00 ft	Slot Radius:	13.200 in	Grid Convergence:	0.39 °

Well	David Howard #6, 1980' FNL, 660' FWL, SEC32 T1N R67W					
Well Position	+N/-S	0.00 ft	Northing:	1,249,478.34 usft	Latitude:	40° 0' 59.788 N
	+E/-W	0.00 ft	Easting:	3,169,987.52 usft	Longitude:	104° 53' 35.095 W
Position Uncertainty		0.00 ft	Wellhead Elevation:	0.00 ft	Ground Level:	5,026.00 ft

Wellbore	OH				
Magnetics	Model Name	Sample Date	Declination (°)	Dip Angle (°)	Field Strength (nT)
	BGGM2013	12/18/2013	8.60	66.62	52,573

Design	OH				
Audit Notes:					
Version:	1.0	Phase:	ACTUAL	Tie On Depth:	0.00
Vertical Section:	Depth From (TVD) (ft)	+N/-S (ft)	+E/-W (ft)	Direction (°)	
	0.00	0.00	0.00	295.22	

Survey Program	Date	2/3/2014			
From (ft)	To (ft)	Survey (Wellbore)	Tool Name	Description	
99.07	4,969.06	Survey #1 Surface Gyros (OH)	SDI Standard Keeper 103	SDI Standard Wireline Keeper ver 1.0.3	

Survey									
Measured Depth (ft)	Inclination (°)	Azimuth (°)	Vertical Depth (ft)	+N/-S (ft)	+E/-W (ft)	Vertical Section (ft)	Dogleg Rate (°/100ft)	Build Rate (°/100ft)	Turn Rate (°/100ft)
0.00	0.00	0.00	0.00	0.00	0.00	0.00	0.00	0.00	0.00
99.07	0.33	196.95	99.07	-0.27	-0.08	-0.04	0.33	0.33	0.00
First SDI Gyro Survey									
123.94	0.30	206.15	123.94	-0.40	-0.13	-0.05	0.24	-0.12	36.99
149.84	0.37	212.52	149.84	-0.53	-0.21	-0.04	0.31	0.27	24.59
174.49	0.63	215.98	174.49	-0.71	-0.33	0.00	1.06	1.05	14.04
199.20	0.70	216.01	199.20	-0.94	-0.50	0.05	0.28	0.28	0.12
223.97	0.87	216.38	223.96	-1.21	-0.70	0.12	0.69	0.69	1.49
249.89	1.32	220.20	249.88	-1.60	-1.01	0.23	1.76	1.74	14.74
274.59	1.37	219.71	274.57	-2.04	-1.38	0.38	0.21	0.20	-1.98
299.30	1.47	222.40	299.27	-2.51	-1.78	0.55	0.49	0.40	10.89

Scientific Drilling International

Survey Report

Company:	KP Kauffman Co, Inc.	Local Co-ordinate Reference:	Well David Howard #6
Project:	Weld County, CO	TVD Reference:	GL 5026' @ 5026.00ft (Ground Level)
Site:	David Howard	MD Reference:	GL 5026' @ 5026.00ft (Ground Level)
Well:	David Howard #6	North Reference:	True
Wellbore:	OH	Survey Calculation Method:	Minimum Curvature
Design:	OH	Database:	Casper District

Survey									
Measured Depth (ft)	Inclination (°)	Azimuth (°)	Vertical Depth (ft)	+N/-S (ft)	+E/-W (ft)	Vertical Section (ft)	Dogleg Rate (°/100ft)	Build Rate (°/100ft)	Turn Rate (°/100ft)
324.08	1.47	223.41	324.05	-2.97	-2.22	0.74	0.10	0.00	4.08
349.92	1.47	228.00	349.88	-3.43	-2.69	0.97	0.46	0.00	17.76
374.69	1.48	232.68	374.64	-3.84	-3.18	1.24	0.49	0.04	18.89
399.40	1.54	236.35	399.34	-4.22	-3.71	1.56	0.46	0.24	14.85
423.35	1.51	232.52	423.28	-4.59	-4.23	1.87	0.44	-0.13	-15.99
448.87	1.44	234.76	448.79	-4.98	-4.76	2.18	0.36	-0.27	8.78
474.71	1.40	239.73	474.63	-5.32	-5.30	2.52	0.50	-0.15	19.23
499.41	1.41	233.97	499.32	-5.66	-5.80	2.84	0.57	0.04	-23.32
524.13	1.38	239.58	524.03	-5.99	-6.30	3.15	0.57	-0.12	22.69
548.70	1.38	239.62	548.59	-6.28	-6.81	3.49	0.00	0.00	0.16
574.85	1.22	245.43	574.74	-6.56	-7.34	3.85	0.79	-0.61	22.22
599.50	1.36	254.39	599.38	-6.75	-7.86	4.24	0.99	0.57	36.35
624.92	1.31	253.22	624.79	-6.91	-8.43	4.68	0.22	-0.20	-4.60
649.58	1.34	255.85	649.45	-7.06	-8.98	5.11	0.27	0.12	10.67
674.16	1.33	255.43	674.02	-7.21	-9.53	5.55	0.06	-0.04	-1.71
699.67	1.32	253.85	699.52	-7.36	-10.10	6.00	0.15	-0.04	-6.19
724.67	1.47	258.81	724.52	-7.50	-10.69	6.48	0.77	0.60	19.84
748.90	1.49	256.52	748.74	-7.64	-11.30	6.97	0.26	0.08	-9.45
774.99	1.44	261.71	774.82	-7.76	-11.96	7.51	0.54	-0.19	19.89
799.59	1.38	257.52	799.41	-7.87	-12.55	8.00	0.48	-0.24	-17.03
824.97	1.41	259.75	824.79	-8.00	-13.16	8.50	0.24	0.12	8.79
849.54	1.41	256.19	849.35	-8.12	-13.75	8.98	0.36	0.00	-14.49
874.85	1.54	253.69	874.65	-8.29	-14.38	9.48	0.57	0.51	-9.88
899.10	1.26	254.31	898.89	-8.45	-14.95	9.92	1.16	-1.15	2.56
924.41	1.39	260.35	924.20	-8.58	-15.52	10.38	0.75	0.51	23.86
948.96	1.33	255.67	948.74	-8.70	-16.09	10.85	0.51	-0.24	-19.06
974.24	1.27	256.22	974.01	-8.84	-16.65	11.29	0.24	-0.24	2.18
999.21	1.34	257.77	998.98	-8.97	-17.20	11.74	0.31	0.28	6.21
1,024.54	1.36	256.10	1,024.30	-9.10	-17.78	12.21	0.17	0.08	-6.59
1,049.81	1.38	258.39	1,049.56	-9.24	-18.37	12.68	0.23	0.08	9.06
1,073.95	1.20	251.51	1,073.70	-9.38	-18.89	13.10	0.98	-0.75	-28.50
1,099.94	1.26	255.02	1,099.68	-9.54	-19.43	13.51	0.37	0.23	13.51
1,124.31	1.20	253.53	1,124.04	-9.68	-19.93	13.91	0.28	-0.25	-6.11
1,149.66	1.19	252.74	1,149.39	-9.83	-20.44	14.30	0.08	-0.04	-3.12
1,173.84	1.24	257.05	1,173.56	-9.96	-20.93	14.69	0.43	0.21	17.82
1,199.73	1.26	253.96	1,199.45	-10.11	-21.48	15.13	0.27	0.08	-11.94
1,223.89	1.22	250.72	1,223.60	-10.26	-21.98	15.51	0.33	-0.17	-13.41
1,249.83	1.13	243.03	1,249.54	-10.47	-22.47	15.86	0.70	-0.35	-29.65
1,274.98	1.19	252.22	1,274.68	-10.66	-22.94	16.21	0.78	0.24	36.54
1,299.09	1.16	252.52	1,298.79	-10.81	-23.41	16.57	0.13	-0.12	1.24
1,324.48	1.09	251.12	1,324.17	-10.97	-23.88	16.93	0.30	-0.28	-5.51
1,348.95	1.10	252.51	1,348.64	-11.11	-24.32	17.27	0.12	0.04	5.68
1,374.14	1.18	250.54	1,373.82	-11.27	-24.80	17.63	0.35	0.32	-7.82

Scientific Drilling International

Survey Report

Company:	KP Kauffman Co, Inc.	Local Co-ordinate Reference:	Well David Howard #6
Project:	Weld County, CO	TVD Reference:	GL 5026' @ 5026.00ft (Ground Level)
Site:	David Howard	MD Reference:	GL 5026' @ 5026.00ft (Ground Level)
Well:	David Howard #6	North Reference:	True
Wellbore:	OH	Survey Calculation Method:	Minimum Curvature
Design:	OH	Database:	Casper District

Survey									
Measured Depth (ft)	Inclination (°)	Azimuth (°)	Vertical Depth (ft)	+N/-S (ft)	+E/-W (ft)	Vertical Section (ft)	Dogleg Rate (°/100ft)	Build Rate (°/100ft)	Turn Rate (°/100ft)
1,399.70	1.04	251.95	1,399.38	-11.43	-25.27	17.99	0.56	-0.55	5.52
1,424.88	1.03	247.67	1,424.55	-11.59	-25.69	18.31	0.31	-0.04	-17.00
1,449.62	1.13	252.25	1,449.29	-11.75	-26.13	18.64	0.53	0.40	18.51
1,474.52	1.09	253.93	1,474.18	-11.89	-26.59	18.99	0.21	-0.16	6.75
1,499.29	1.16	253.21	1,498.95	-12.03	-27.06	19.36	0.29	0.28	-2.91
1,524.50	1.11	249.73	1,524.15	-12.18	-27.53	19.72	0.34	-0.20	-13.80
1,549.50	1.12	254.23	1,549.15	-12.34	-28.00	20.07	0.35	0.04	18.00
1,574.37	1.13	252.18	1,574.01	-12.48	-28.46	20.43	0.17	0.04	-8.24
1,599.11	1.10	258.35	1,598.75	-12.60	-28.93	20.80	0.50	-0.12	24.94
1,624.62	1.13	257.60	1,624.25	-12.70	-29.41	21.20	0.13	0.12	-2.94
1,649.32	1.11	258.69	1,648.95	-12.80	-29.89	21.58	0.12	-0.08	4.41
1,674.38	1.05	261.20	1,674.01	-12.88	-30.35	21.97	0.30	-0.24	10.02
1,699.06	1.08	263.36	1,698.68	-12.95	-30.81	22.35	0.20	0.12	8.75
1,724.82	0.99	255.89	1,724.44	-13.03	-31.26	22.73	0.63	-0.35	-29.00
1,749.42	1.10	263.71	1,749.03	-13.11	-31.70	23.10	0.73	0.45	31.79
1,774.14	1.09	267.10	1,773.75	-13.14	-32.17	23.51	0.27	-0.04	13.71
1,798.75	1.13	268.33	1,798.35	-13.16	-32.65	23.93	0.19	0.16	5.00
1,824.85	1.21	269.21	1,824.45	-13.17	-33.18	24.41	0.31	0.31	3.37
1,849.74	1.21	267.70	1,849.33	-13.19	-33.71	24.88	0.13	0.00	-6.07
1,874.60	1.14	263.27	1,874.19	-13.23	-34.22	25.32	0.46	-0.28	-17.82
1,899.77	1.21	265.05	1,899.35	-13.28	-34.73	25.76	0.31	0.28	7.07
1,924.02	0.94	237.32	1,923.60	-13.41	-35.15	26.09	2.38	-1.11	-114.35
1,949.22	1.21	263.54	1,948.79	-13.55	-35.59	26.42	2.20	1.07	104.05
1,974.36	1.36	263.31	1,973.93	-13.62	-36.15	26.90	0.60	0.60	-0.91
1,999.43	1.48	267.60	1,998.99	-13.66	-36.77	27.44	0.64	0.48	17.11
2,024.56	1.52	266.56	2,024.11	-13.70	-37.43	28.02	0.19	0.16	-4.14
2,049.62	1.54	266.75	2,049.16	-13.74	-38.10	28.61	0.08	0.08	0.76
2,073.48	1.54	267.12	2,073.01	-13.77	-38.74	29.18	0.04	0.00	1.55
2,099.96	1.54	264.97	2,099.48	-13.82	-39.45	29.80	0.22	0.00	-8.12
2,124.03	1.51	266.43	2,123.55	-13.87	-40.08	30.35	0.20	-0.12	6.07
2,149.44	1.58	266.31	2,148.95	-13.91	-40.77	30.95	0.28	0.28	-0.47
2,174.64	1.51	269.16	2,174.14	-13.94	-41.45	31.56	0.41	-0.28	11.31
2,199.97	1.43	268.30	2,199.46	-13.95	-42.10	32.14	0.33	-0.32	-3.40
2,223.56	1.56	270.36	2,223.04	-13.96	-42.71	32.69	0.60	0.55	8.73
2,248.90	1.21	278.70	2,248.37	-13.92	-43.32	33.26	1.59	-1.38	32.91
2,274.18	1.19	277.39	2,273.65	-13.84	-43.84	33.77	0.13	-0.08	-5.18
2,299.47	1.23	278.91	2,298.93	-13.77	-44.37	34.28	0.20	0.16	6.01
2,324.72	1.00	271.18	2,324.18	-13.72	-44.86	34.74	1.09	-0.91	-30.61
2,349.94	1.12	278.38	2,349.39	-13.68	-45.33	35.18	0.71	0.48	28.55
2,374.78	0.89	286.35	2,374.23	-13.59	-45.75	35.60	1.08	-0.93	32.09
2,399.25	0.79	296.91	2,398.70	-13.46	-46.08	35.96	0.75	-0.41	43.15
2,424.14	0.69	293.26	2,423.58	-13.32	-46.37	36.28	0.44	-0.40	-14.66
2,448.95	0.70	297.98	2,448.39	-13.19	-46.65	36.58	0.23	0.04	19.02

Scientific Drilling International

Survey Report

Company:	KP Kauffman Co, Inc.	Local Co-ordinate Reference:	Well David Howard #6
Project:	Weld County, CO	TVD Reference:	GL 5026' @ 5026.00ft (Ground Level)
Site:	David Howard	MD Reference:	GL 5026' @ 5026.00ft (Ground Level)
Well:	David Howard #6	North Reference:	True
Wellbore:	OH	Survey Calculation Method:	Minimum Curvature
Design:	OH	Database:	Casper District

Survey										
Measured Depth (ft)	Inclination (°)	Azimuth (°)	Vertical Depth (ft)	+N/-S (ft)	+E/-W (ft)	Vertical Section (ft)	Dogleg Rate (°/100ft)	Build Rate (°/100ft)	Turn Rate (°/100ft)	
2,473.88	0.51	316.10	2,473.32	-13.04	-46.86	36.83	1.07	-0.76	72.68	
2,499.13	0.58	302.15	2,498.57	-12.89	-47.04	37.07	0.59	0.28	-55.25	
2,524.71	0.53	320.82	2,524.15	-12.73	-47.23	37.30	0.73	-0.20	72.99	
2,549.15	0.42	317.37	2,548.59	-12.58	-47.36	37.49	0.46	-0.45	-14.12	
2,574.36	0.61	340.39	2,573.80	-12.38	-47.47	37.67	1.10	0.75	91.31	
2,598.79	0.48	331.47	2,598.23	-12.17	-47.56	37.84	0.63	-0.53	-36.51	
2,624.79	0.49	337.99	2,624.22	-11.97	-47.65	38.01	0.22	0.04	25.08	
2,649.60	0.45	336.57	2,649.03	-11.79	-47.73	38.16	0.17	-0.16	-5.72	
2,674.28	0.69	327.85	2,673.71	-11.57	-47.85	38.36	1.03	0.97	-35.33	
2,699.20	0.46	325.47	2,698.63	-11.36	-47.99	38.57	0.93	-0.92	-9.55	
2,724.00	0.43	323.70	2,723.43	-11.20	-48.10	38.74	0.13	-0.12	-7.14	
2,749.98	0.68	327.08	2,749.41	-11.00	-48.24	38.96	0.97	0.96	13.01	
2,774.76	0.47	315.43	2,774.19	-10.80	-48.39	39.18	0.97	-0.85	-47.01	
2,799.55	0.65	333.22	2,798.98	-10.60	-48.52	39.38	1.00	0.73	71.76	
2,824.77	0.57	331.15	2,824.20	-10.36	-48.65	39.60	0.33	-0.32	-8.21	
2,849.54	0.67	329.79	2,848.96	-10.13	-48.78	39.81	0.41	0.40	-5.49	
2,873.92	0.47	315.51	2,873.34	-9.94	-48.92	40.03	1.00	-0.82	-58.57	
2,899.79	0.48	321.15	2,899.21	-9.78	-49.07	40.22	0.18	0.04	21.80	
2,924.63	0.92	339.74	2,924.05	-9.51	-49.20	40.46	1.97	1.77	74.84	
2,949.26	0.75	321.77	2,948.68	-9.20	-49.37	40.74	1.26	-0.69	-72.96	
2,974.93	0.62	314.70	2,974.35	-8.97	-49.57	41.03	0.60	-0.51	-27.54	
2,999.68	0.73	311.43	2,999.09	-8.77	-49.78	41.30	0.47	0.44	-13.21	
3,024.42	0.64	309.06	3,023.83	-8.58	-50.01	41.59	0.38	-0.36	-9.58	
3,048.70	0.76	318.31	3,048.11	-8.37	-50.22	41.87	0.68	0.49	38.10	
3,074.57	0.79	323.01	3,073.98	-8.10	-50.44	42.18	0.27	0.12	18.17	
3,099.45	0.76	326.86	3,098.86	-7.83	-50.64	42.48	0.24	-0.12	15.47	
3,124.12	0.77	336.78	3,123.52	-7.54	-50.79	42.74	0.54	0.04	40.21	
3,149.00	0.70	330.70	3,148.40	-7.25	-50.93	42.99	0.42	-0.28	-24.44	
3,174.55	0.60	341.11	3,173.95	-6.99	-51.05	43.21	0.60	-0.39	40.74	
3,198.90	0.46	349.13	3,198.30	-6.77	-51.11	43.35	0.65	-0.57	32.94	
3,224.74	0.87	316.58	3,224.14	-6.53	-51.27	43.60	2.10	1.59	-125.97	
3,249.22	0.68	315.38	3,248.62	-6.29	-51.50	43.91	0.78	-0.78	-4.90	
3,274.34	0.49	272.82	3,273.73	-6.18	-51.71	44.15	1.83	-0.76	-169.43	
3,299.86	1.03	339.91	3,299.25	-5.96	-51.90	44.41	3.73	2.12	262.89	
3,324.52	1.26	349.42	3,323.91	-5.48	-52.02	44.73	1.21	0.93	38.56	
3,348.87	1.14	323.64	3,348.25	-5.02	-52.21	45.10	2.25	-0.49	-105.87	
3,374.36	1.62	322.99	3,373.73	-4.53	-52.58	45.64	1.88	1.88	-2.55	
3,399.72	1.51	336.79	3,399.08	-3.94	-52.93	46.21	1.54	-0.43	54.42	
3,423.77	1.20	344.51	3,423.13	-3.40	-53.12	46.61	1.49	-1.29	32.10	
3,448.84	1.23	332.92	3,448.19	-2.91	-53.31	46.99	0.99	0.12	-46.23	
3,474.30	1.49	331.72	3,473.65	-2.38	-53.60	47.47	1.03	1.02	-4.71	
3,499.76	1.40	348.34	3,499.10	-1.78	-53.81	47.93	1.68	-0.35	65.28	
3,524.04	1.32	354.90	3,523.37	-1.21	-53.90	48.25	0.72	-0.33	27.02	
3,549.50	0.62	10.71	3,548.83	-0.78	-53.90	48.43	2.92	-2.75	62.10	

Scientific Drilling International

Survey Report

Company:	KP Kauffman Co, Inc.	Local Co-ordinate Reference:	Well David Howard #6
Project:	Weld County, CO	TVD Reference:	GL 5026' @ 5026.00ft (Ground Level)
Site:	David Howard	MD Reference:	GL 5026' @ 5026.00ft (Ground Level)
Well:	David Howard #6	North Reference:	True
Wellbore:	OH	Survey Calculation Method:	Minimum Curvature
Design:	OH	Database:	Casper District

Survey									
Measured Depth (ft)	Inclination (°)	Azimuth (°)	Vertical Depth (ft)	+N/-S (ft)	+E/-W (ft)	Vertical Section (ft)	Dogleg Rate (°/100ft)	Build Rate (°/100ft)	Turn Rate (°/100ft)
3,574.95	1.09	327.70	3,574.27	-0.44	-54.00	48.67	3.00	1.85	-169.00
3,599.25	1.10	332.61	3,598.57	-0.04	-54.23	49.05	0.39	0.04	20.21
3,624.70	1.07	0.98	3,624.02	0.41	-54.34	49.34	2.09	-0.12	111.47
3,648.99	1.64	348.66	3,648.30	0.98	-54.41	49.64	2.62	2.35	-50.72
3,674.45	1.02	318.10	3,673.75	1.51	-54.63	50.06	3.62	-2.44	-120.03
3,699.91	0.40	332.21	3,699.21	1.75	-54.82	50.34	2.51	-2.44	55.42
3,724.20	1.02	326.18	3,723.50	2.01	-54.98	50.60	2.57	2.55	-24.83
3,749.66	1.40	315.61	3,748.95	2.42	-55.33	51.08	1.72	1.49	-41.52
3,773.48	1.46	304.04	3,772.76	2.80	-55.78	51.66	1.24	0.25	-48.57
3,799.01	1.20	305.63	3,798.29	3.13	-56.27	52.24	1.03	-1.02	6.23
3,824.49	1.71	332.64	3,823.76	3.63	-56.66	52.80	3.30	2.00	106.00
3,849.86	1.30	344.67	3,849.12	4.24	-56.91	53.29	2.03	-1.62	47.42
3,874.21	0.83	331.59	3,873.47	4.66	-57.07	53.61	2.16	-1.93	-53.72
3,899.66	1.13	307.03	3,898.91	4.98	-57.36	54.01	2.00	1.18	-96.50
3,923.89	1.40	311.32	3,923.14	5.32	-57.77	54.53	1.18	1.11	17.71
3,949.34	1.60	326.34	3,948.58	5.82	-58.20	55.13	1.73	0.79	59.02
3,974.73	1.14	342.57	3,973.96	6.35	-58.47	55.60	2.35	-1.81	63.92
3,999.40	0.90	318.80	3,998.63	6.73	-58.67	55.95	1.95	-0.97	-96.35
4,024.85	1.35	317.38	4,024.07	7.10	-59.01	56.41	1.77	1.77	-5.58
4,049.14	1.28	326.36	4,048.36	7.54	-59.35	56.91	0.89	-0.29	36.97
4,074.57	1.08	344.01	4,073.78	8.01	-59.57	57.31	1.62	-0.79	69.41
4,099.90	1.77	323.53	4,099.10	8.55	-59.87	57.81	3.34	2.72	-80.85
4,124.89	2.12	317.18	4,124.08	9.20	-60.42	58.58	1.64	1.40	-25.41
4,149.73	1.96	352.11	4,148.90	9.96	-60.79	59.24	4.97	-0.64	140.62
4,174.75	1.72	341.67	4,173.91	10.74	-60.96	59.73	1.64	-0.96	-41.73
4,199.74	1.74	337.74	4,198.89	11.44	-61.22	60.27	0.48	0.08	-15.73
4,224.73	1.60	352.06	4,223.87	12.14	-61.42	60.74	1.76	-0.56	57.30
4,249.65	1.69	350.67	4,248.78	12.85	-61.52	61.13	0.40	0.36	-5.58
4,274.60	1.88	353.56	4,273.72	13.62	-61.63	61.56	0.84	0.76	11.58
4,299.43	1.87	2.68	4,298.53	14.43	-61.66	61.93	1.20	-0.04	36.73
4,324.49	1.82	10.73	4,323.58	15.23	-61.56	62.18	1.05	-0.20	32.12
4,349.42	1.89	18.35	4,348.50	16.01	-61.36	62.33	1.03	0.28	30.57
4,374.34	1.76	24.81	4,373.40	16.74	-61.07	62.38	0.98	-0.52	25.92
4,399.23	1.63	30.00	4,398.28	17.40	-60.73	62.36	0.81	-0.52	20.85
4,424.12	1.34	33.67	4,423.17	17.95	-60.39	62.28	1.23	-1.17	14.74
4,449.76	1.28	32.31	4,448.80	18.44	-60.08	62.21	0.26	-0.23	-5.30
4,474.99	1.33	29.73	4,474.02	18.93	-59.78	62.15	0.31	0.20	-10.23
4,499.79	1.25	29.67	4,498.82	19.42	-59.50	62.10	0.32	-0.32	-0.24
4,524.63	1.25	29.31	4,523.65	19.89	-59.24	62.06	0.03	0.00	-1.45
4,549.46	1.19	33.00	4,548.47	20.34	-58.96	62.01	0.40	-0.24	14.86
4,574.33	1.20	39.91	4,573.34	20.76	-58.66	61.91	0.58	0.04	27.78
4,599.00	1.19	47.54	4,598.00	21.13	-58.30	61.75	0.65	-0.04	30.93
4,624.97	1.17	49.88	4,623.97	21.48	-57.90	61.53	0.20	-0.08	9.01

Scientific Drilling International

Survey Report

Company:	KP Kauffman Co, Inc.	Local Co-ordinate Reference:	Well David Howard #6
Project:	Weld County, CO	TVD Reference:	GL 5026' @ 5026.00ft (Ground Level)
Site:	David Howard	MD Reference:	GL 5026' @ 5026.00ft (Ground Level)
Well:	David Howard #6	North Reference:	True
Wellbore:	OH	Survey Calculation Method:	Minimum Curvature
Design:	OH	Database:	Casper District

Survey										
Measured Depth (ft)	Inclination (°)	Azimuth (°)	Vertical Depth (ft)	+N/-S (ft)	+E/-W (ft)	Vertical Section (ft)	Dogleg Rate (°/100ft)	Build Rate (°/100ft)	Turn Rate (°/100ft)	
4,649.72	1.08	54.38	4,648.71	21.78	-57.52	61.31	0.51	-0.36	18.18	
4,674.70	1.05	59.67	4,673.69	22.03	-57.13	61.07	0.41	-0.12	21.18	
4,698.96	1.15	43.04	4,697.94	22.32	-56.77	60.87	1.37	0.41	-68.55	
4,724.94	1.11	60.79	4,723.92	22.63	-56.37	60.64	1.35	-0.15	68.32	
4,749.96	1.14	55.05	4,748.94	22.90	-55.96	60.38	0.47	0.12	-22.94	
4,774.92	1.02	54.35	4,773.89	23.17	-55.57	60.15	0.48	-0.48	-2.80	
4,799.84	0.95	54.49	4,798.81	23.42	-55.22	59.94	0.28	-0.28	0.56	
4,825.00	0.85	55.84	4,823.96	23.64	-54.90	59.74	0.41	-0.40	5.37	
4,849.99	0.90	48.16	4,848.95	23.88	-54.60	59.57	0.51	0.20	-30.73	
4,874.84	0.82	45.74	4,873.80	24.13	-54.33	59.43	0.35	-0.32	-9.74	
4,899.16	0.97	40.95	4,898.12	24.41	-54.07	59.31	0.69	0.62	-19.70	
4,924.79	0.85	24.48	4,923.74	24.75	-53.85	59.26	1.12	-0.47	-64.26	
4,948.98	0.73	22.70	4,947.93	25.05	-53.71	59.27	0.51	-0.50	-7.36	
4,969.06	0.63	24.86	4,968.01	25.27	-53.62	59.27	0.51	-0.50	10.76	
Last SDI Gyro Survey										

Design Annotations					
Measured Depth (ft)	Vertical Depth (ft)	Local Coordinates			
		+N/-S (ft)	+E/-W (ft)	Comment	
99.07	99.07	-0.27	-0.08	First SDI Gyro Survey	
4,969.06	4,968.01	25.27	-53.62	Last SDI Gyro Survey	

Checked By: _____ Approved By: _____ Date: _____