



Cathedral Energy Services

145053

2":100' - MD

3/18/2014 10:27:57 AM

Oper. Company: Whiting petroleum

Country: USA

State / Province: CO

County / Parish: weld

Started:

API/UWI:

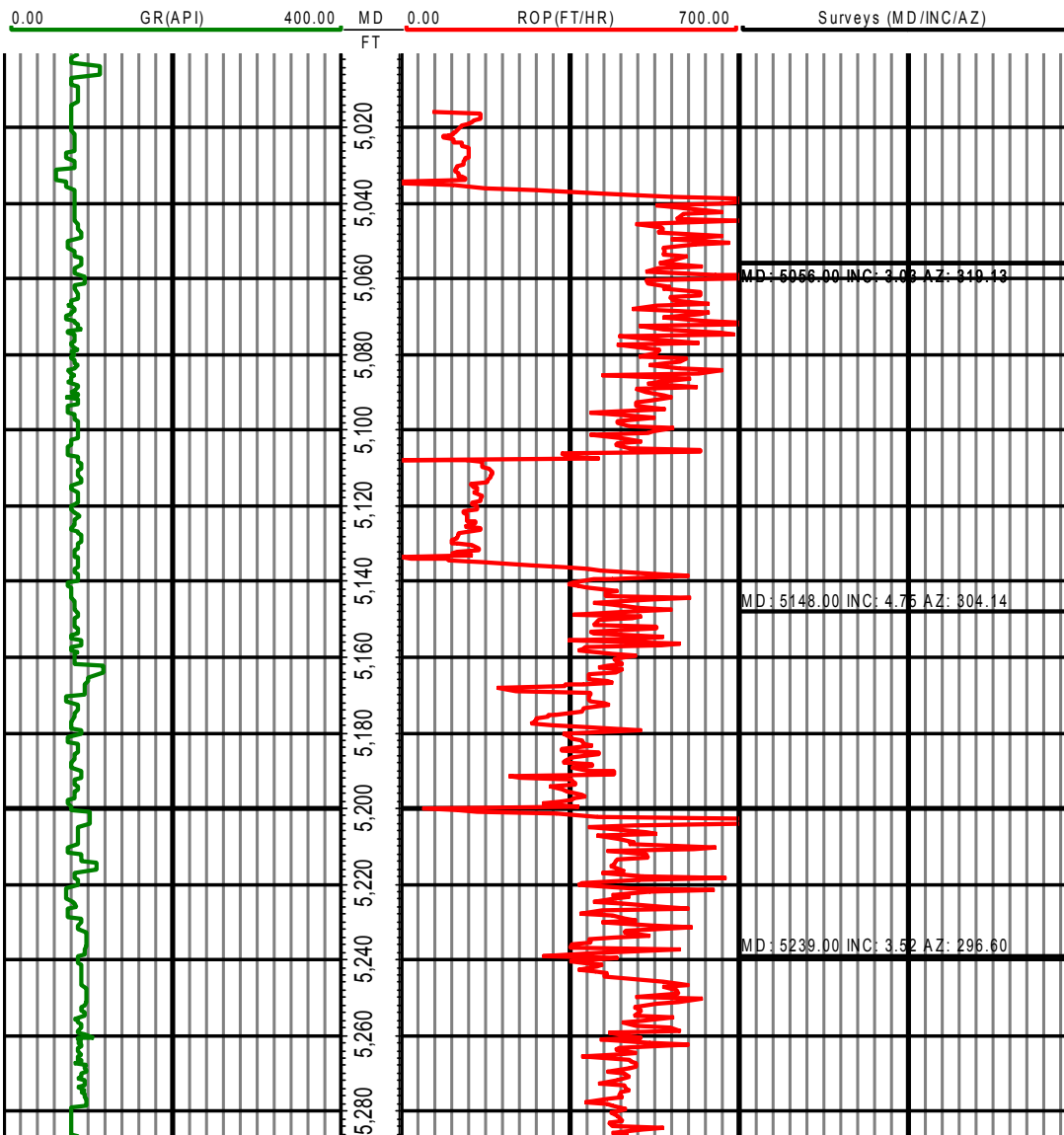
Field: DJ watenburg

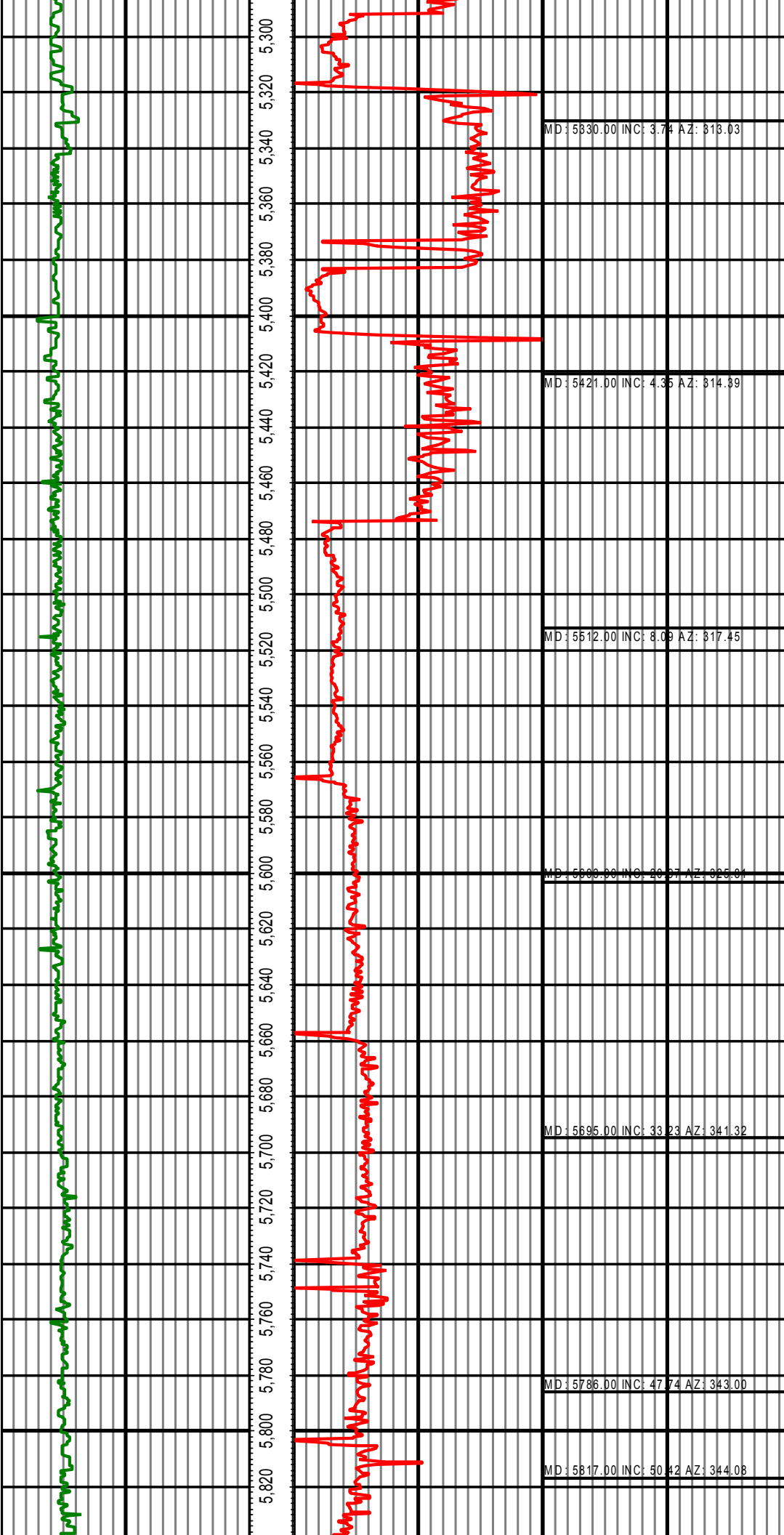
Well: Razor 11E-0202B

Rig: Cade 23

Ended:

All interpretations are opinions based on inferences from electrical or other measurements and we cannot and do not guarantee the accuracy or correctness of any interpretation, and we shall not except in the case of gross or willful negligence on our part, be liable or responsible for any loss, cost damages or expenses incurred or sustained by anyone resulting from an interpretation made by any of our officers, agents, or employees.





MD: 5847.00 INC: 50.29 AZ: 344.05

MD: 5877.00 INC: 49.38 AZ: 343.28

MD: 5909.00 INC: 49.53 AZ: 343.14

MD: 5941.00 INC: 49.57 AZ: 342.62

MD: 5972.00 INC: 50.59 AZ: 344.28

MD: 6004.00 INC: 52.57 AZ: 345.32

MD: 6036.00 INC: 56.00 AZ: 346.12

MD: 6067.00 INC: 58.46 AZ: 346.64

MD: 6099.00 INC: 59.37 AZ: 345.85

MD: 6130.00 INC: 63.34 AZ: 344.30

MD: 6162.00 INC: 67.74 AZ: 342.85

MD: 6194.00 INC: 72.44 AZ: 342.66

MD: 6225.00 INC: 75.96 AZ: 343.10

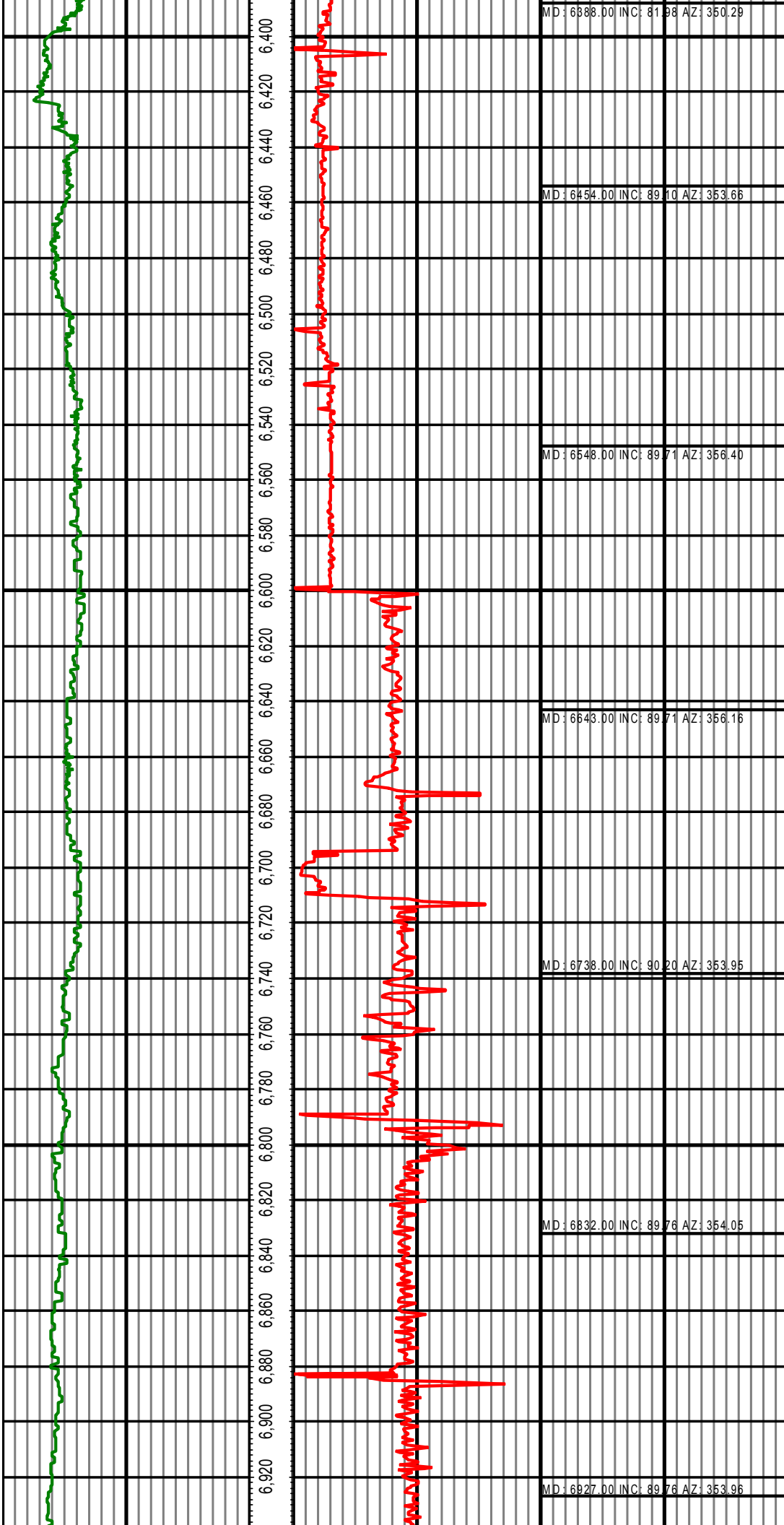
MD: 6257.00 INC: 76.34 AZ: 343.00

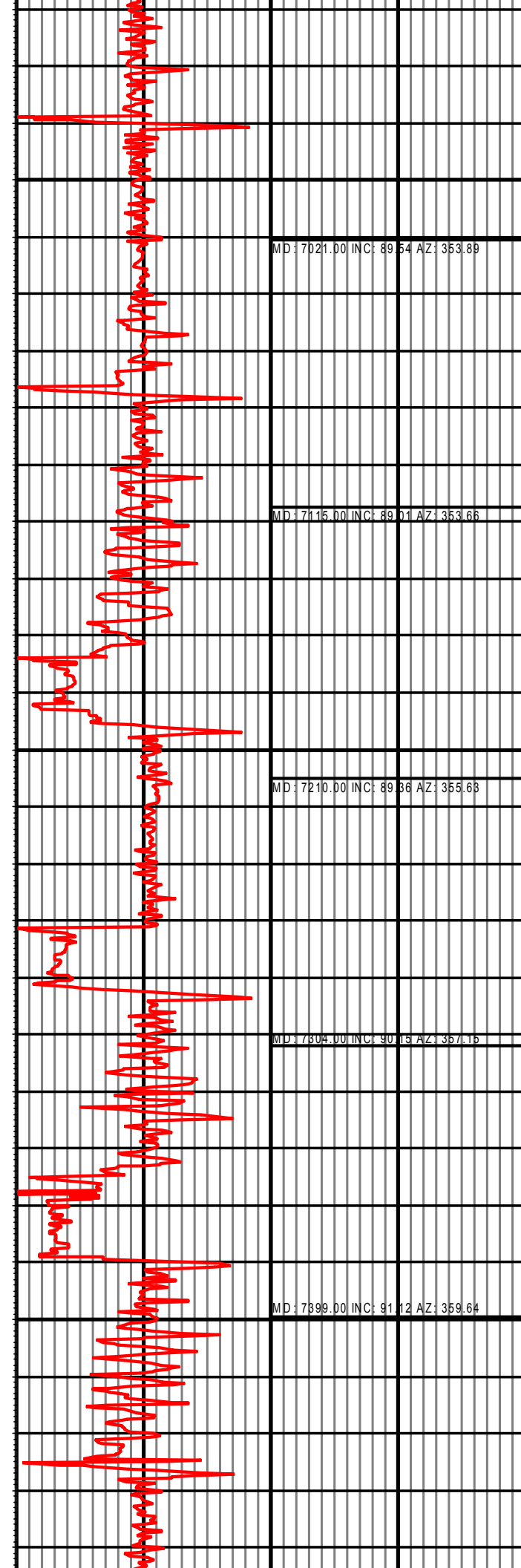
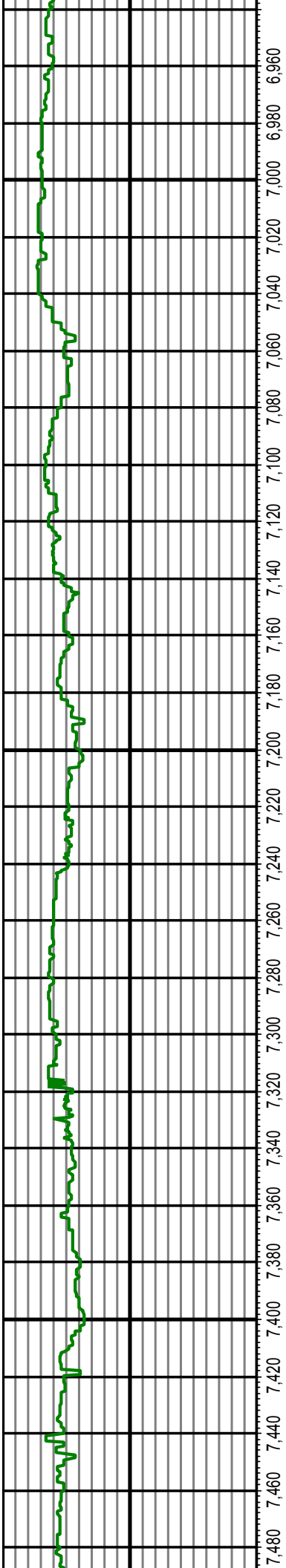
MD: 6288.00 INC: 78.55 AZ: 342.88

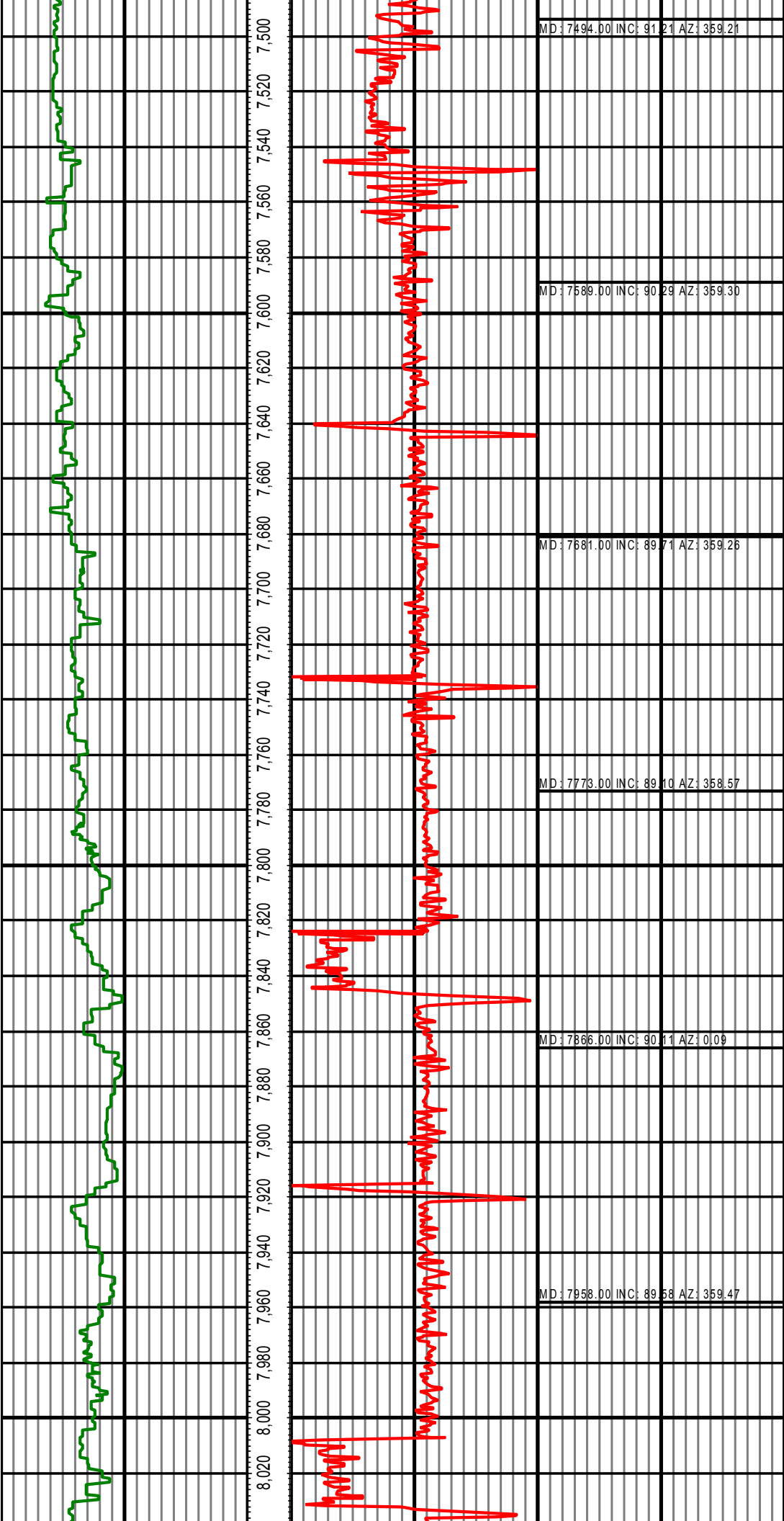
MD: 6320.00 INC: 80.53 AZ: 344.88

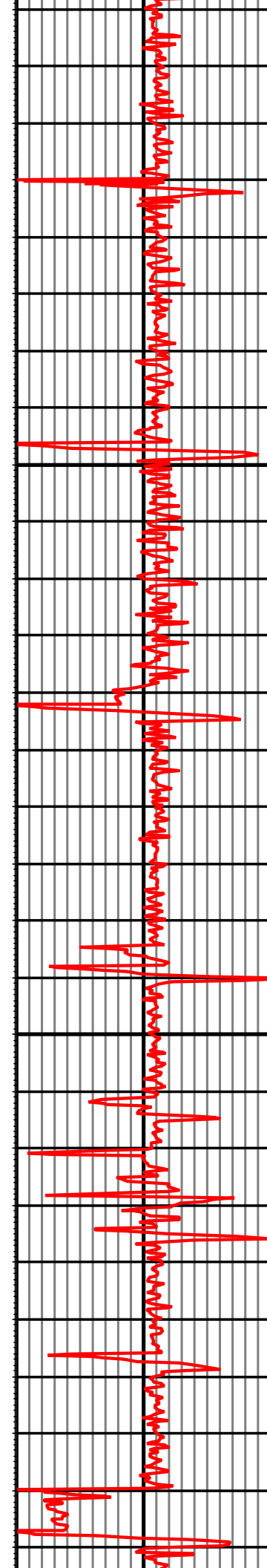
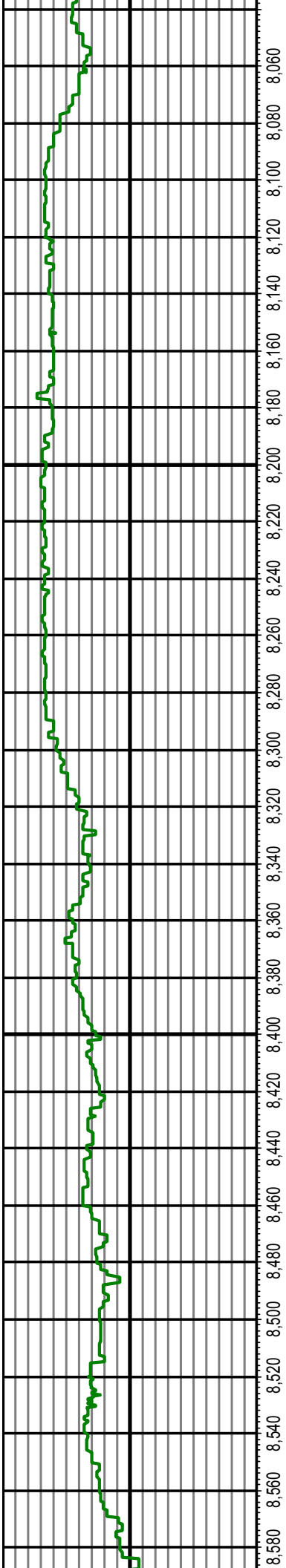
MD: 6351.00 INC: 80.79 AZ: 347.10

MD: 6388.00 INC: 81.98 AZ: 350.29

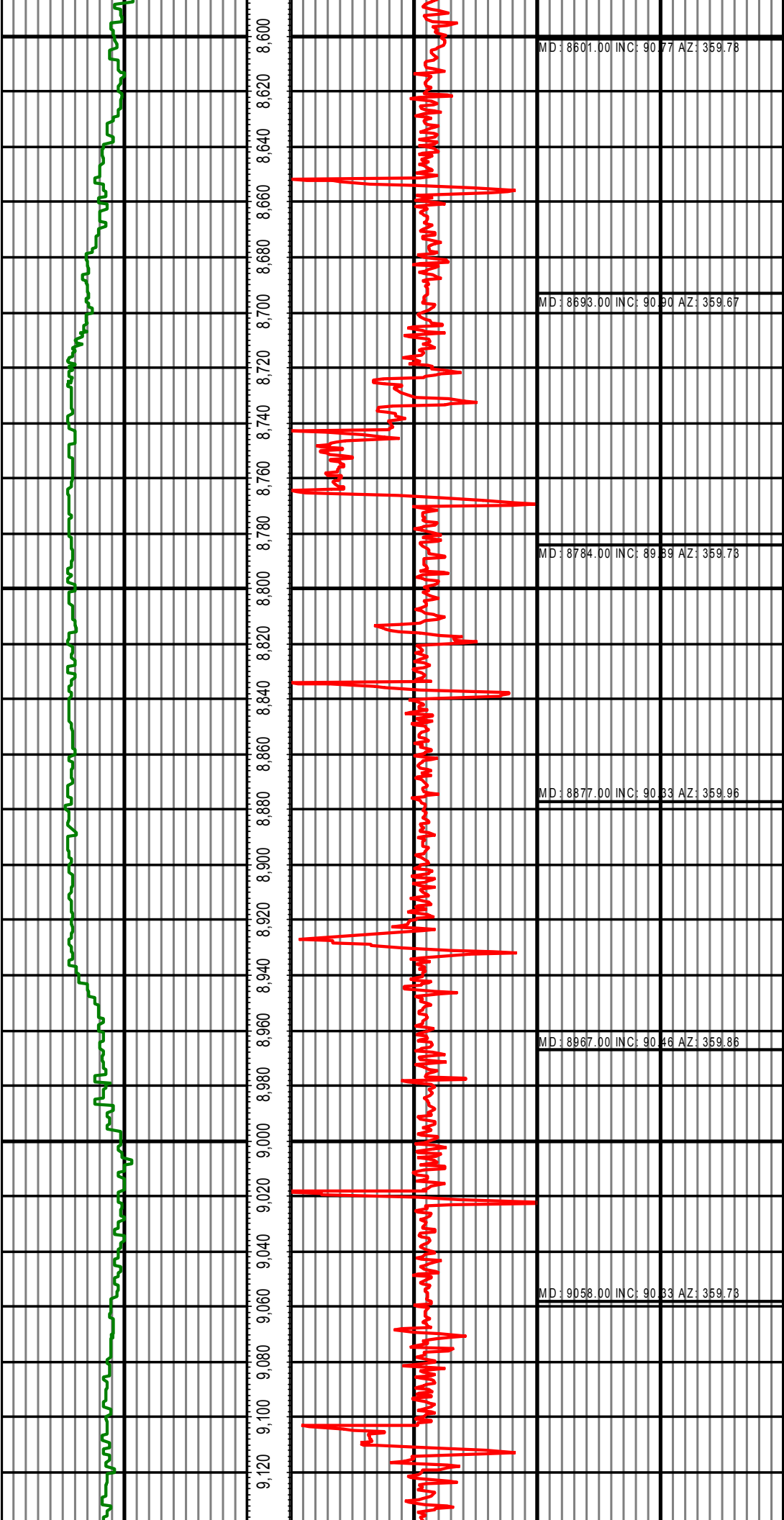


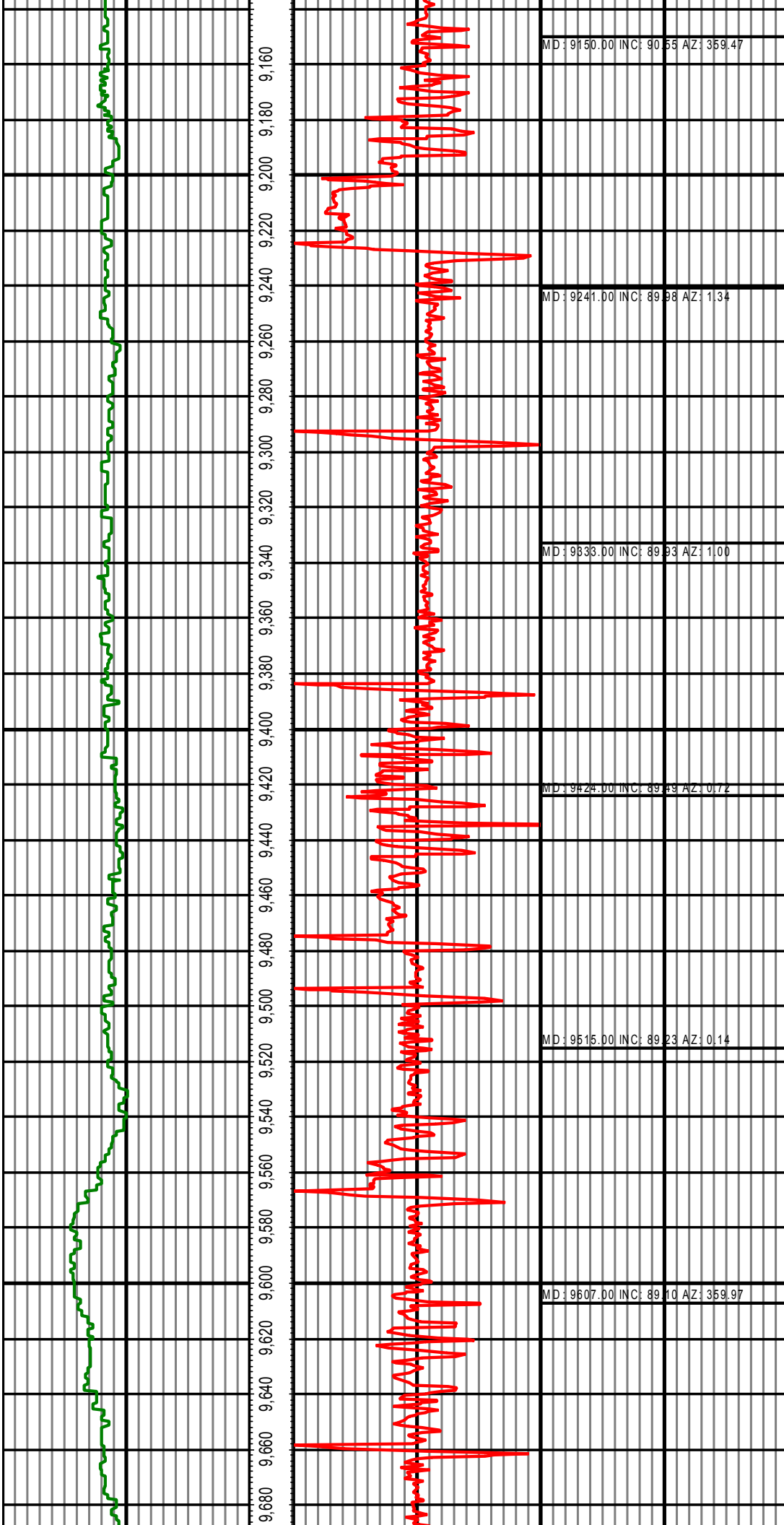


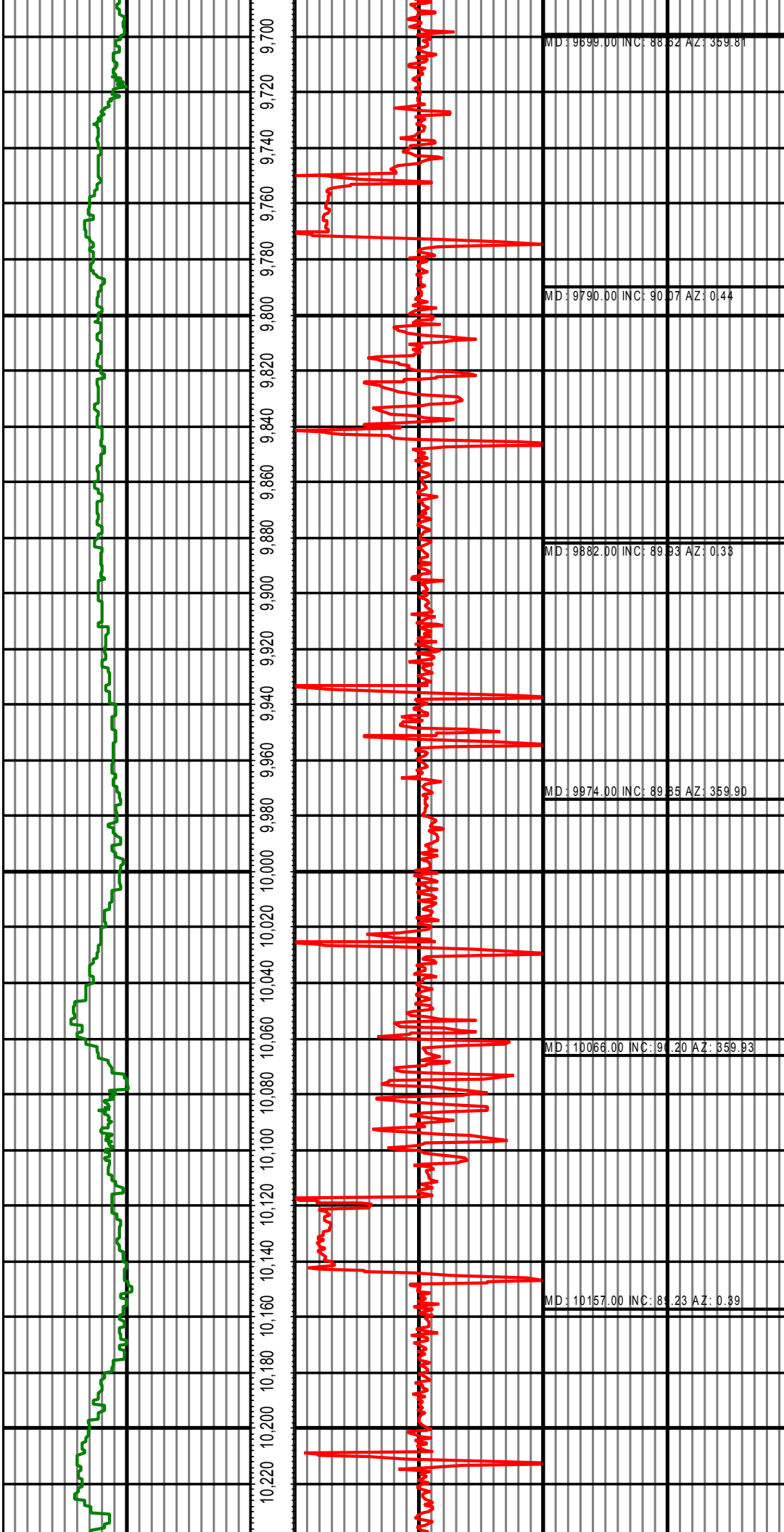


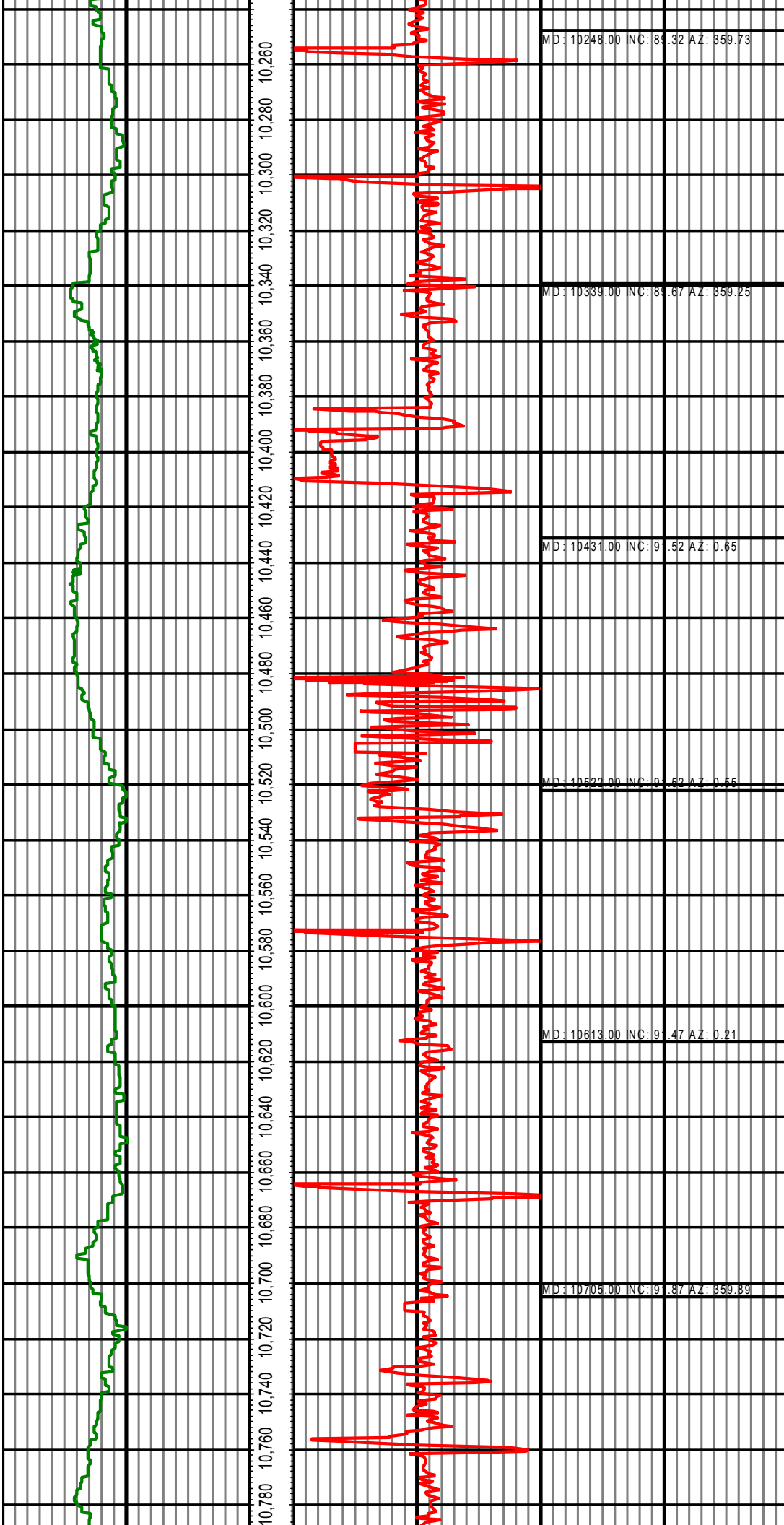


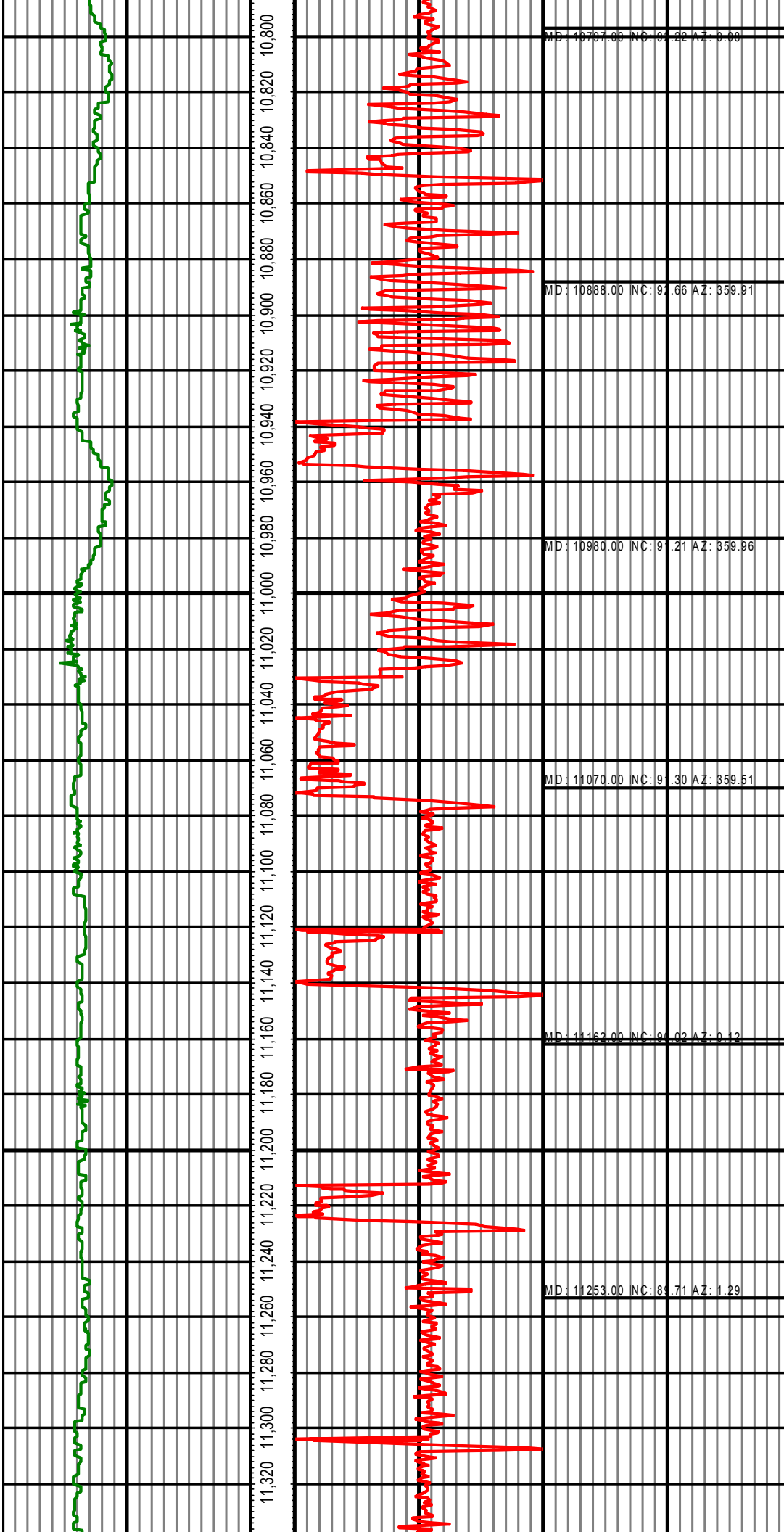
MD: 8049.00 INC: 91.21 AZ: 0.75
MD: 8142.00 INC: 91.25 AZ: 0.62
MD: 8235.00 INC: 91.62 AZ: 0.34
MD: 8326.00 INC: 91.65 AZ: 0.17
MD: 8418.00 INC: 91.65 AZ: 360.00
MD: 8510.00 INC: 92.00 AZ: 359.81

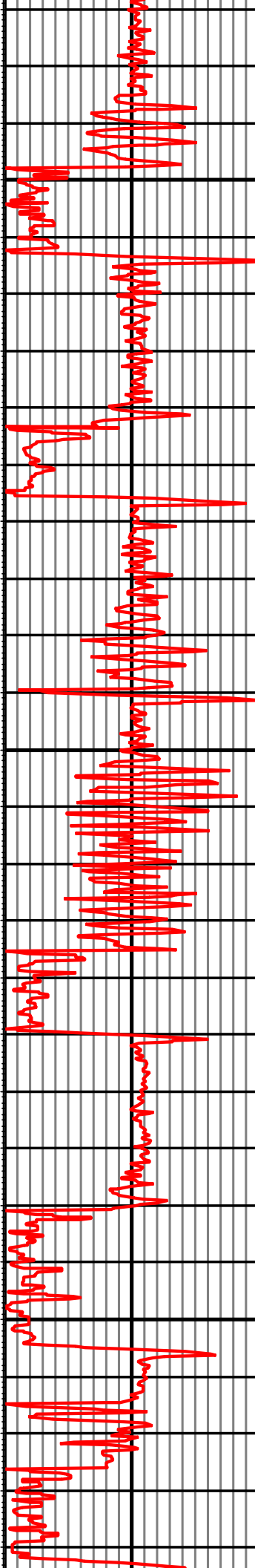
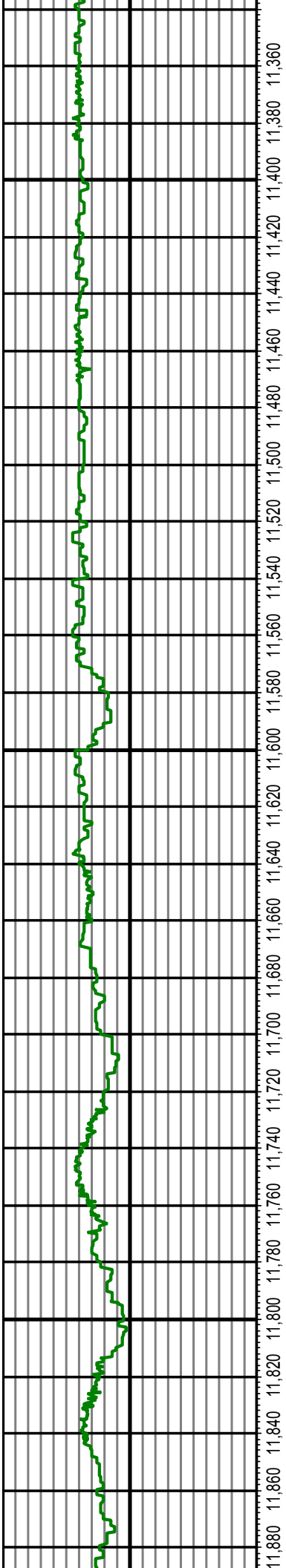












MD: 11345.00 INC: 81.80 AZ: 0.94

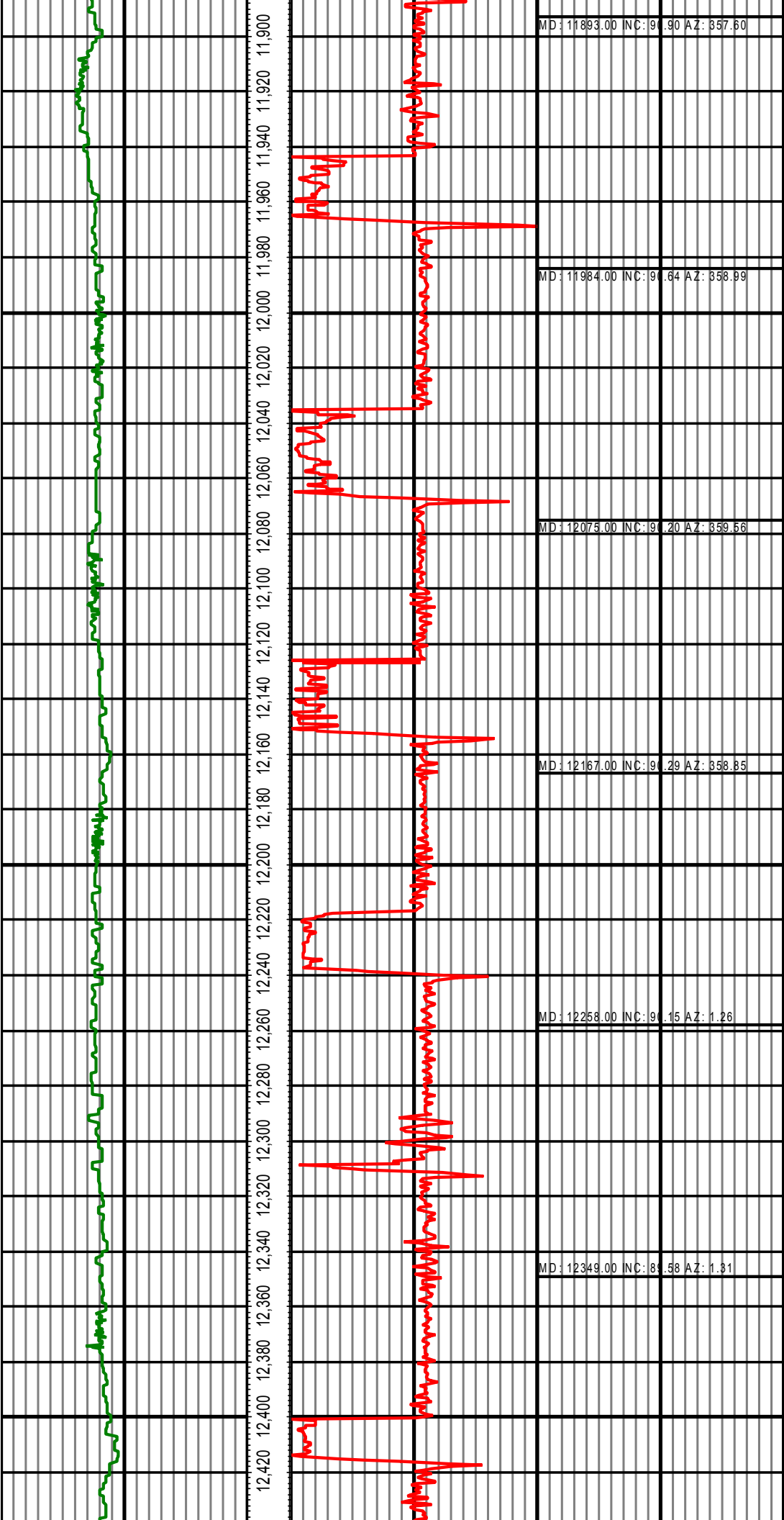
MD: 11436.00 INC: 81.46 AZ: 1.70

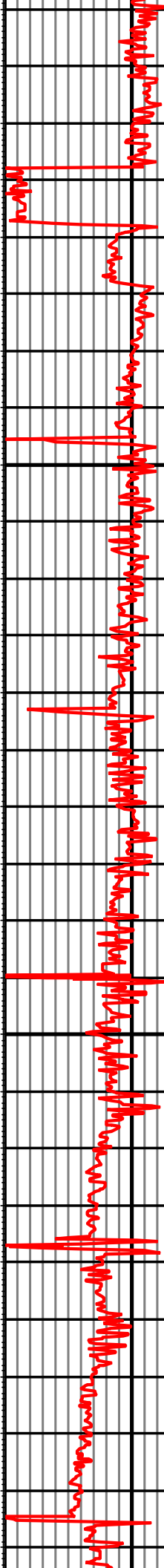
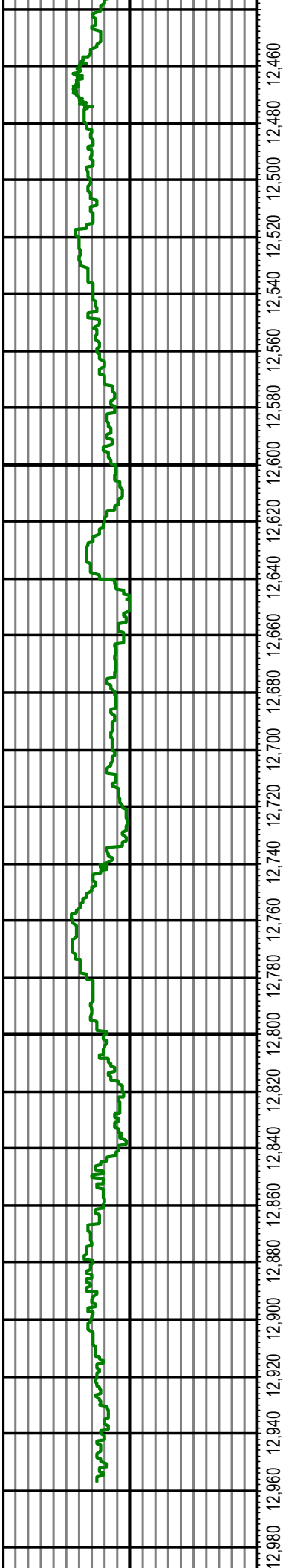
MD: 11528.00 INC: 81.74 AZ: 1.57

MD: 11620.00 INC: 81.25 AZ: 1.80

MD: 11711.00 INC: 81.22 AZ: 0.68

MD: 11802.00 INC: 81.62 AZ: 3.58 04





MD: 12444.00 INC: 90.68 AZ: 359.94

MD: 12539.00 INC: 89.49 AZ: 0.48

MD: 12634.00 INC: 89.05 AZ: 0.39

MD: 12728.00 INC: 89.79 AZ: 0.32

MD: 12823.00 INC: 89.44 AZ: 358.63

MD: 12918.00 INC: 89.00 AZ: 358.88

MD: 12946.00 INC: 89.74 AZ: 358.92

