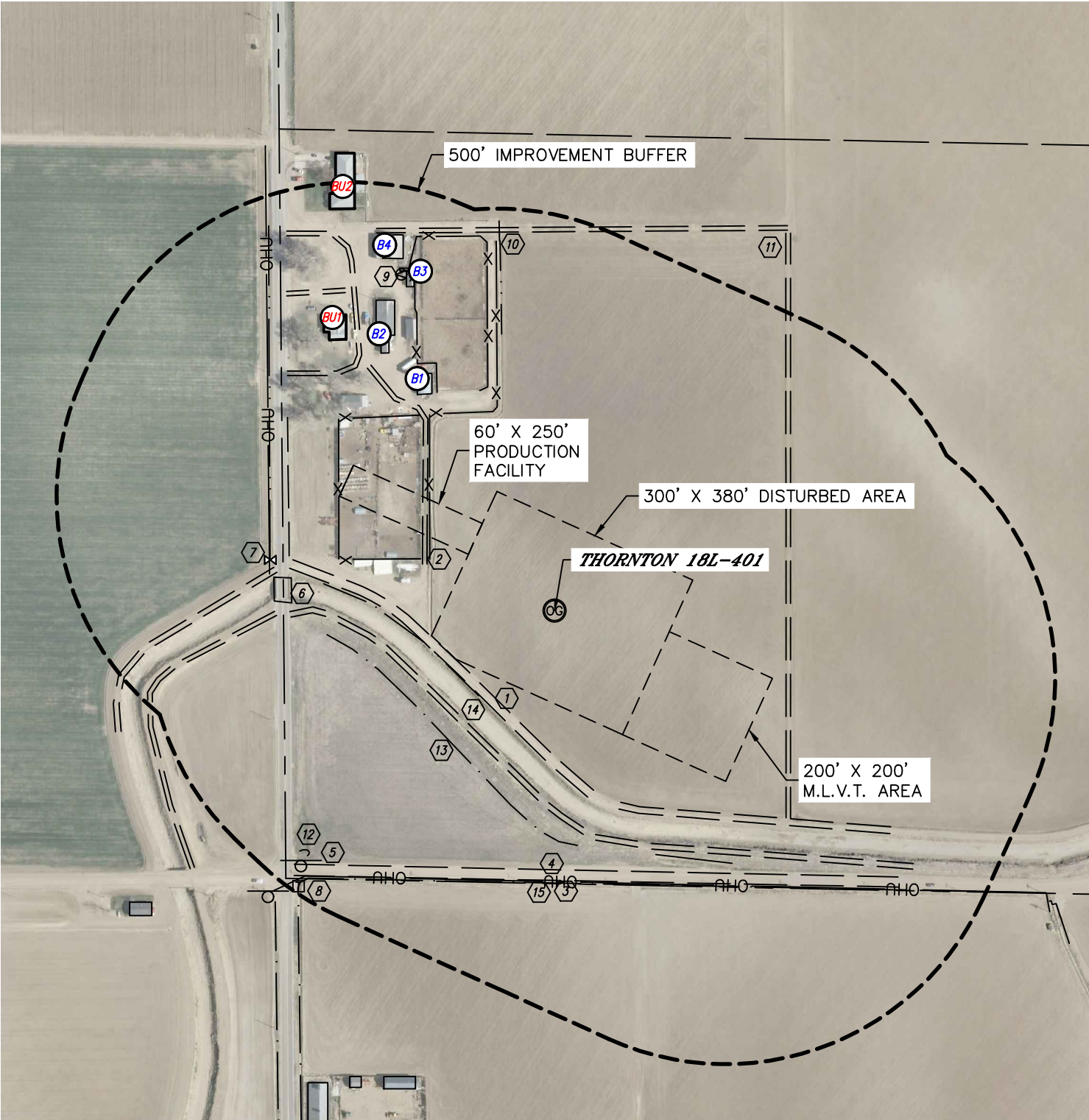




LOCATION DRAWING
THORNTON 18L-HZ PAD

SECTION: 18
TOWNSHIP: 7N
RANGE: 65W





Lat40°, Inc. 1635 Foxtrail Drive, Suite 325 Loveland, CO 970-776-3321

LOCATION DRAWING

THORNTON 18L-HZ PAD

SECTION: 18
TOWNSHIP: 7N
RANGE: 65W

IMPROVEMENTS:

(MEASURED FROM THE PROPOSED THORNTON 18L-401 WELL LOCATION)

- ① BUILDING UNIT BU1 605' NW, BU2 794' NW
- ② BUILDING B1 440' NW, B2 542' NW, B3 624' NW, B4 678' NW
- ③ ACCESS ROAD 192' & 254' SW, 244', 393', 558' & 676' NW, 413' E, 493' & 499' W, 674' N
- ④ FENCE 239', 254' & 411' NW
- ⑤ OVERHEAD UTILITY 479' S, 503' W
- ⑥ PUBLIC ROAD 458' S (CR 80), 468' W (CR 37)
- ⑦ SIGN 629' SW
- ⑧ BRIDGE 465' W
- ⑨ WATER VALVE 511' W
- ⑩ TELEPHONE PEDESTAL 665' SW
- ⑪ SPIGOT 653' NW
- ⑫ CULVERT 661' N
- ⑬ IRRIGATION STRUCTURES 773' & 783' NE
- ⑭ LOW AREA 608' SW
- ⑮ DITCH 293' SW, 498' NW
- ⑯ CANAL 201' SW
- ⑰ BARROW DITCH 481' S, 511' NW

NEAREST CULTURAL ITEMS:

BUILDING B1 440' NW
BUILDING UNIT BU1 605' NW
HIGH OCCUPANCY BUILDING UNIT +5280'
DESIGNATED OUTSIDE ACTIVITY AREA +5280'
PUBLIC ROAD 458' S (CR80)
ABOVE GROUND UTILITY 479' S
RAILROAD ±3543' SW
PROPERTY LINE ±225' SW