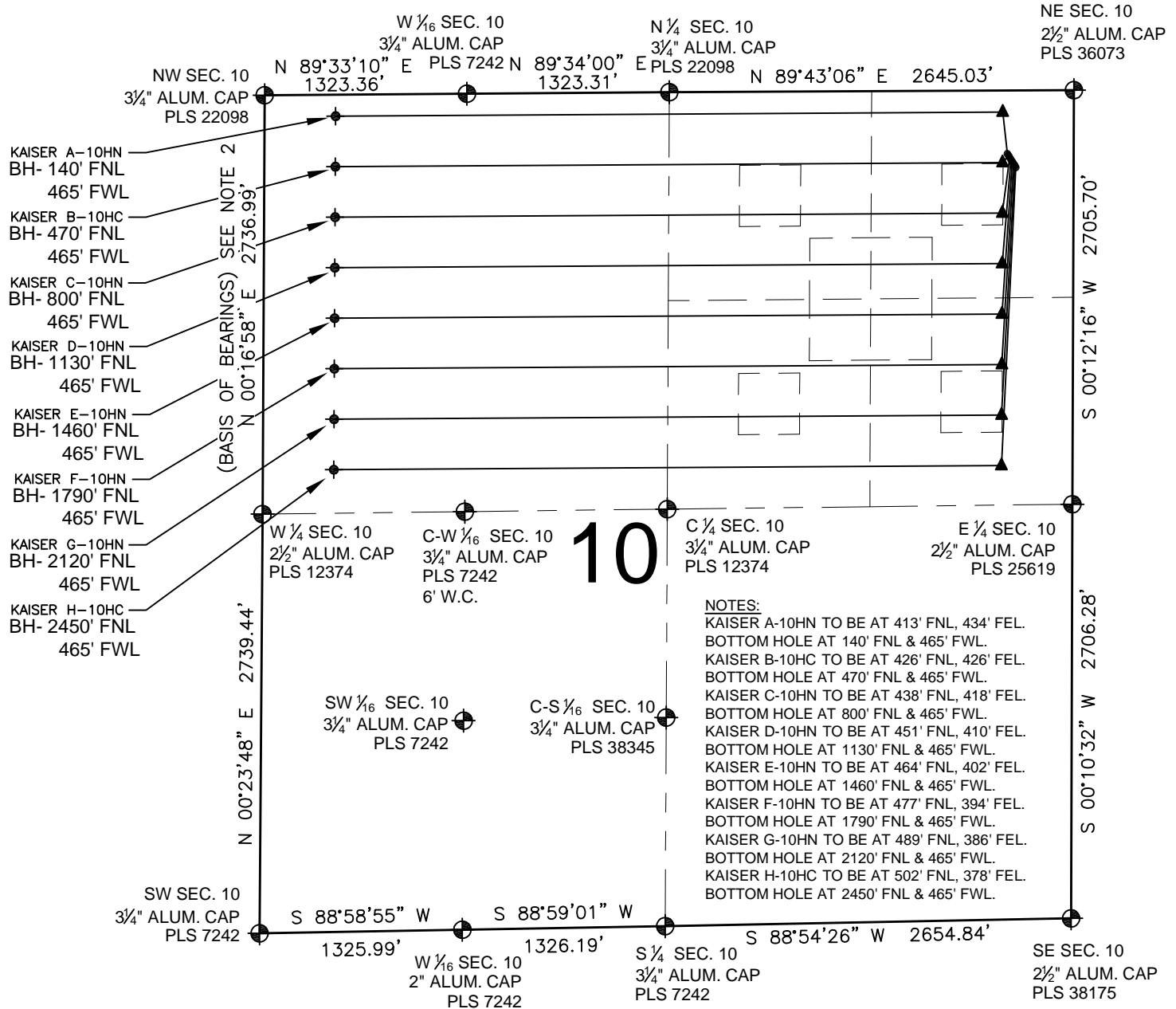


PAD DRAWING: KAISER 10-D

SECTION 10, TOWNSHIP 6 NORTH, RANGE 65 WEST, 6TH P.M.



NOTES:

- THIS FIELD SURVEY CONFORMS TO THE MINIMUM STANDARDS SET BY THE C.O.G.C.C., RULE NO. 215
- BEARINGS AND DISTANCE SHOWN HEREON ARE GRID AND BASED ON THE COLORADO STATE PLANE COORDINATE SYSTEM, NAD 83/2011 BETWEEN MONUMENTS AS LABELED HEREON AND ELEVATIONS SHOWN ARE NAVD 88, AS DERIVED BY GPS OBSERVATIONS.
- GRID DISTANCES ARE SHOWN, AS MEASURED IN THE FIELD, WITH TIES TO WELLS MEASURED PERPENDICULAR TO SECTION LINES.

LEGEND

- EXISTING MONUMENT (circle with cross)
- PROPOSED WELL (circle with dot)
- EXISTING WELL (diamond)
- BOTTOM HOLE (diamond with cross)
- LANDING POINT (triangle)
- LP = LANDING POINT
- BH = BOTTOM HOLE

PREPARED BY:

PFS

Petroleum Field Services, LLC
7535 Hilltop Circle
Denver, CO 80221



BAYSWATER EXPLORATION & PRODUCTION, LLC

FIELD DATE:
12-12-13

DRAWING DATE:
04-15-14

BY:
SNC

CHECKED:
MLP

PAD NAME:
KAISER 10-D

SURFACE LOCATION:

NE 1/4 NE 1/4, SEC. 10, T6N, R65W, 6TH P.M.

WELD COUNTY, COLORADO

