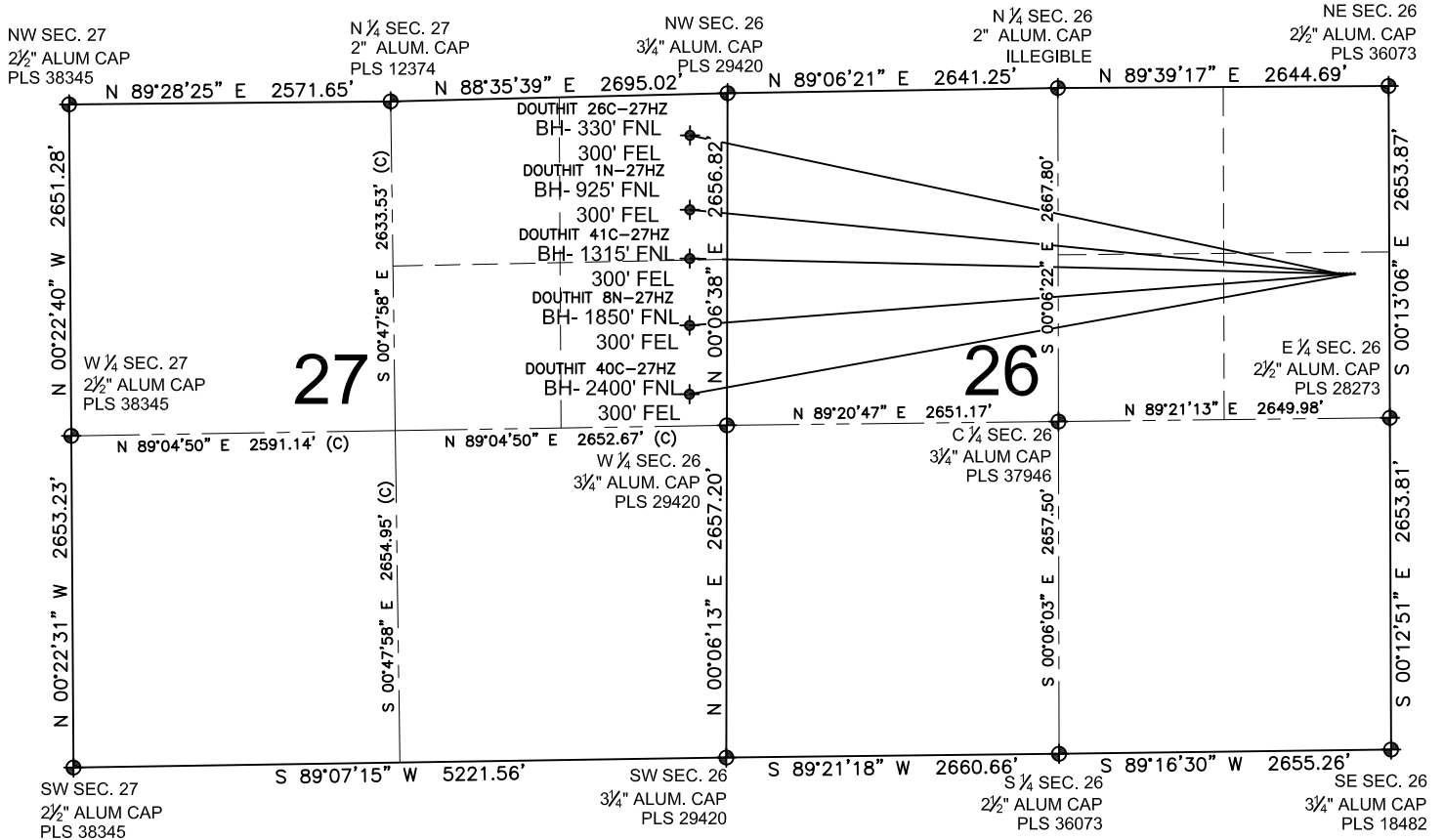


# DOUTHIT 41C-27HZ MULTI-WELL PLAN

SECTION 26, TOWNSHIP 3 NORTH, RANGE 68 WEST, 6TH P.M.



## NOTES:

DOUTHIT 26C-27HZ TO BE AT 1500' FNL, 399' FEL.  
 BOTTOM HOLE AT 330' FNL & 300' FEL. SEC. 27  
 DOUTHIT 1N-27HZ TO BE AT 1500' FNL, 369' FEL.  
 BOTTOM HOLE AT 925' FNL & 300' FEL. SEC. 27  
 DOUTHIT 41C-27HZ TO BE AT 1500' FNL, 339' FEL.  
 BOTTOM HOLE AT 1315' FNL & 300' FEL. SEC. 27  
 DOUTHIT 8N-27HZ TO BE AT 1500' FNL, 309' FEL.  
 BOTTOM HOLE AT 1850' FNL & 300' FEL. SEC. 27  
 DOUTHIT 40C-27HZ TO BE AT 1500' FNL, 279' FEL.  
 BOTTOM HOLE AT 2400' FNL & 300' FEL. SEC. 27

## LEGEND

= EXISTING MONUMENT   
 = BOTTOM HOLE   
 BH= BOTTOM HOLE  
 = PROPOSED WELL   
 = EXISTING WELL

PREPARED BY:



KERR-MCGEE OIL & GAS ONSHORE LP

FIELD DATE:

11-20-13

DRAWING DATE:

04-15-14

SURFACE LOCATION:

SE 1/4, NE 1/4, SEC. 26, T3N, R68W, 6TH P.M.

WELD COUNTY, COLORADO

