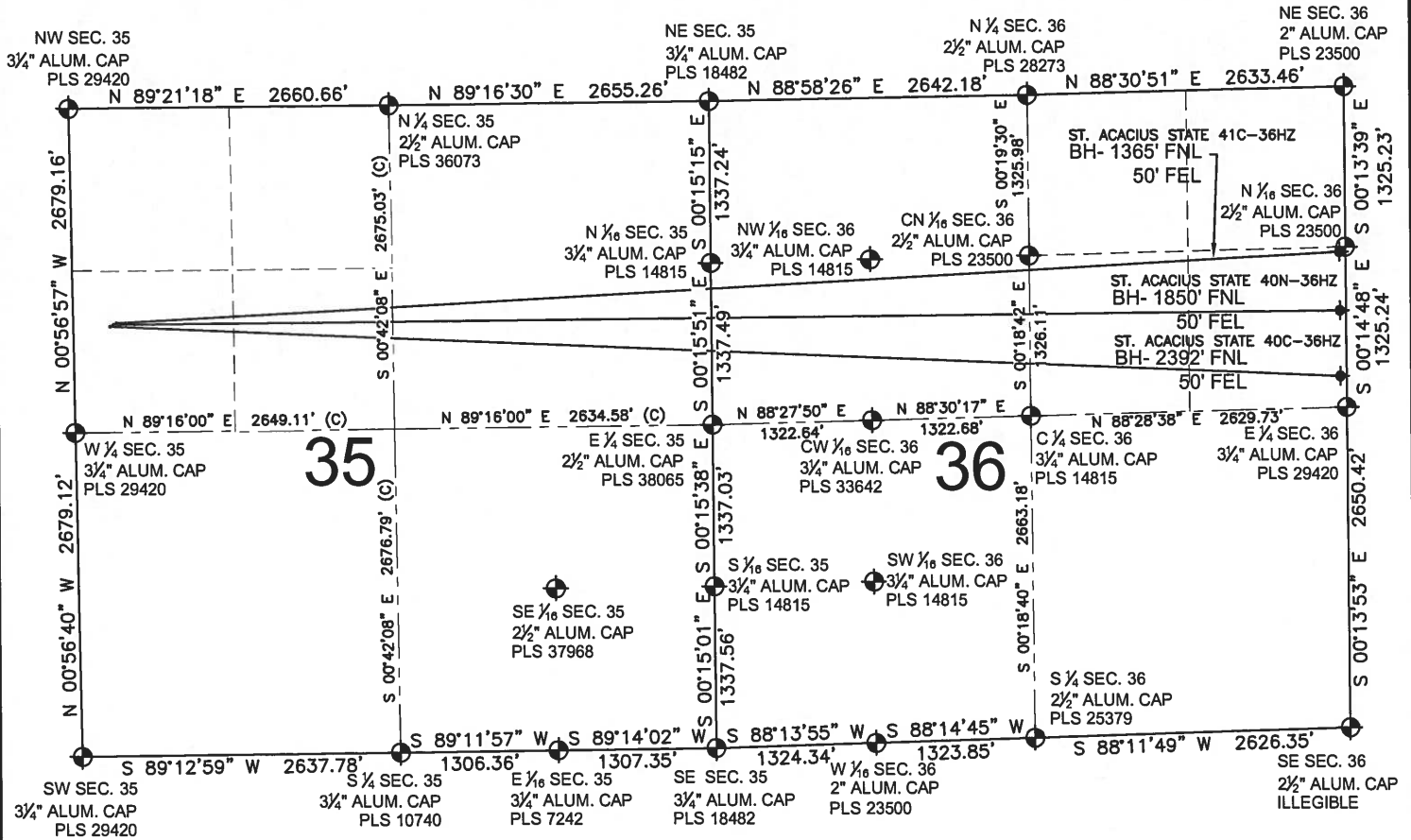


ST. ACACIUS STATE 40N-36HZ MULTI-WELL PLAN

SECTION 35, TOWNSHIP 3 NORTH, RANGE 68 WEST, 6TH P.M.



LEGEND

- ⊙ = EXISTING MONUMENT
- = PROPOSED WELL
- ⊕ = BOTTOM HOLE
- ◆ = EXISTING WELL
- BH = BOTTOM HOLE

NOTES:

- ST. ACACIUS STATE 41C-36HZ TO BE AT 1773' FNL, 357' FWL. BOTTOM HOLE AT 1365' FNL & 50' FEL, SEC. 36.
- ST. ACACIUS STATE 40N-36HZ TO BE AT 1786' FNL, 330' FWL. BOTTOM HOLE AT 1850' FNL & 50' FEL, SEC. 36.
- ST. ACACIUS STATE 40C-36HZ TO BE AT 1800' FNL, 303' FWL. BOTTOM HOLE AT 2392' FNL & 50' FEL, SEC. 36.

PREPARED BY:



KERR-MCGEE OIL & GAS ONSHORE LP

FIELD DATE:

09-30-13

DRAWING DATE:

11-14-13

SURFACE LOCATION:

SW 1/4, NW 1/4, SEC. 35, T3N, R68W, 6TH P.M.
WELD COUNTY, COLORADO

