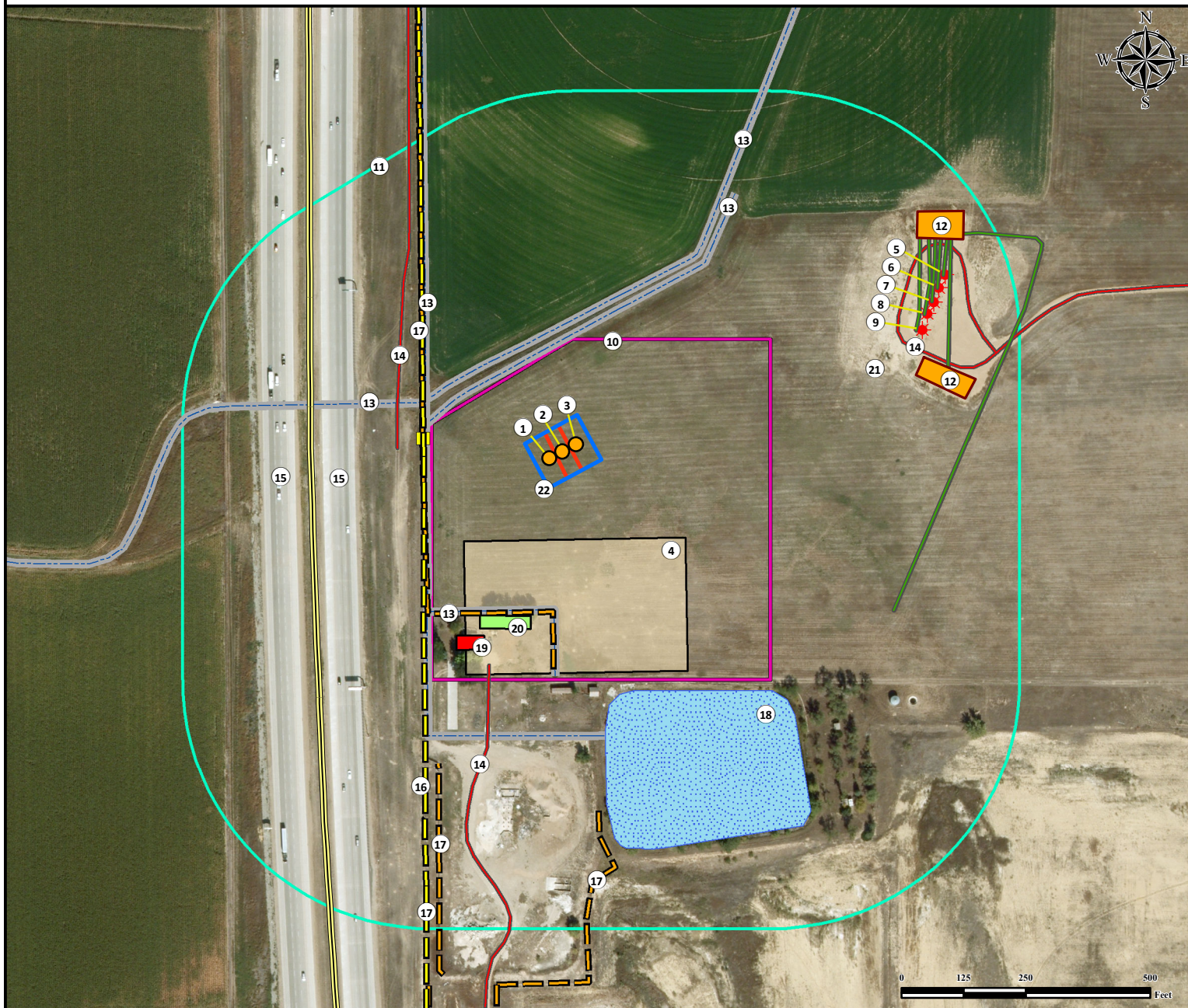


# Location Drawing

## ST. ACACIUS STATE 40N-36HZ

### Horizontal Multi Well Pad

**SW¼ NW¼ SECTION 35, TOWNSHIP 3 NORTH, RANGE 68 WEST OF THE 6TH PRINCIPAL MERIDIAN**



1. Proposed Well ST. ACACIUS STATE 40C-36HZ.
2. Proposed Well ST. ACACIUS STATE 40N-36HZ.
3. Proposed Well ST. ACACIUS STATE 41C-36HZ.
4. Proposed Facility ST. ACACIUS STATE 40N-36HZ is ±176' S.
5. Existing Well ST. ACACIUS 29-35 is ±847' NE.
6. Existing Well ST. ACACIUS 3-35 is ±824' NE.
7. Existing Well ST. ACACIUS 18-35 is ±804' NE.
8. Existing Well ST. ACACIUS 6-35 is ±783' NE.
9. Existing Well ST. ACACIUS 5-35 is ±763' NE.

10. Operational Disturbance Area.
11. 500' Radius.
12. Existing Facilities are ±727' NE and ±836' NE.
13. Concrete Ditches are ±198' NW, ±227' NW, ±275' W, and ±318' SW.
14. Private Roads are ±332' W, ±455' SW, and 714' NE.
15. Highway I-25 is ±448' W and ±565' W.
16. Powerline is ±279' W.

17. Fences are ±281' W, ±322' SW, ±675' SE, and ±717' SE.
18. Pond is ±501' SE.
19. Building Unit is ±400' SW. This structure to be removed.
20. Building is ±336' SW. This structure to be removed.
21. ECD is ±690' NE.
22. Pump Jack Operations Area.

Legend	
	Pump Jack Operations Area
	Proposed Well
	Existing Well
	500' Radius
	Disturbance Area
	Proposed Facility
	Facility Enclosure
	Building
	Lake/Pond
	Powerline
	Fence
	Building Unit
	Lake/Pond
	Pipeline
	Private Road
	Powerline
	Fence
	Concrete Ditch
	Pipeline
	Private Road
	Powerline
	Fence
	Public Road

**Reference Location**

\*\* All measurements are made from Reference Well ST. ACACIUS STATE 40N-36HZ \*\*

**Lat: 40.184806° Long: -104.978423° (NAD83)**

**Elevation: 4927 Feet**

Surface Use: Dry Land Crop

**PFS** Petroleum Field Services  
 Use our resources to find yours!  
[www.petro-fs.com](http://www.petro-fs.com)  
 (303) 928-7128

Field Date: 09/30/2013  
 Drafting Date: 02/13/2014  
 Drafter: DRF  
 Revision: 2

Data Sources:  
 - Aerial courtesy of Anadarko Petroleum Corporation (2010)

Nearest Building Unit: ±400' SW

Prepared for: **Anadarko** Petroleum Corporation  
**KERR-MCGEE OIL & GAS ONSHORE LP**