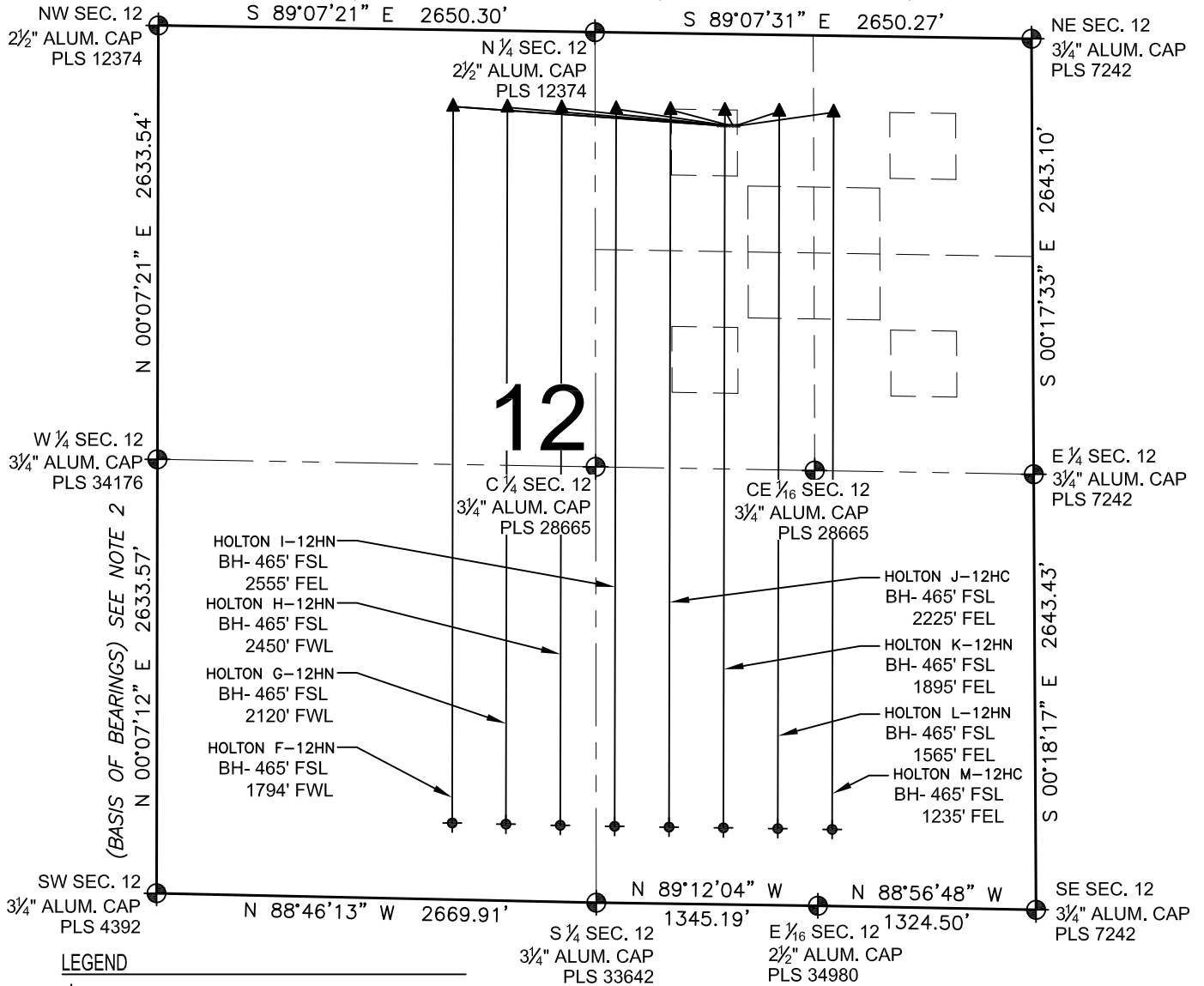


HOLTON 12-C PAD MULTI-WELL PLAN

SECTION 12, TOWNSHIP 6 NORTH, RANGE 65 WEST, 6TH P.M.



LEGEND

- ⊕ = EXISTING MONUMENT ▲ = LANDING POINT
- = PROPOSED WELL LP = LANDING POINT
- ◆ = EXISTING WELL BH = BOTTOM HOLE
- ⬥ = BOTTOM HOLE

NOTES:

- HOLTON F-12HN TO BE AT 555' FNL, 1905' FEL. BOTTOM HOLE AT 465' FSL & 1794' FWL.
- HOLTON G-12HN TO BE AT 555' FNL, 1887' FEL. BOTTOM HOLE AT 465' FSL & 2120' FWL.
- HOLTON H-12HN TO BE AT 555' FNL, 1869' FEL. BOTTOM HOLE AT 465' FSL & 2450' FWL.
- HOLTON I-12HN TO BE AT 555' FNL, 1851' FEL. BOTTOM HOLE AT 465' FSL & 2555' FEL.
- HOLTON J-12HC TO BE AT 555' FNL, 1833' FEL. BOTTOM HOLE AT 465' FSL & 2225' FEL.
- HOLTON K-12HN TO BE AT 555' FNL, 1815' FEL. BOTTOM HOLE AT 465' FSL & 1895' FEL.
- HOLTON L-12HN TO BE AT 555' FNL, 1797' FEL. BOTTOM HOLE AT 465' FSL & 1565' FEL.
- HOLTON M-12HC TO BE AT 555' FNL, 1779' FEL. BOTTOM HOLE AT 465' FSL & 1235' FEL.

NOTES:

1. THIS FIELD SURVEY CONFORMS TO THE MINIMUM STANDARDS SET BY THE C.O.G.C.C., RULE NO. 215
2. BEARINGS AND DISTANCE SHOWN HEREON ARE GRID AND BASED ON THE COLORADO STATE PLANE COORDINATE SYSTEM, NAD 83/2011 BETWEEN MONUMENTS AS LABELED HEREON AND ELEVATIONS SHOWN ARE NAVD 88, AS DERIVED BY GPS OBSERVATIONS.
3. GRID DISTANCES ARE SHOWN, AS MEASURED IN THE FIELD, WITH TIES TO WELLS MEASURED PERPENDICULAR TO SECTION LINES.

PREPARED BY:



BAYSWATER EXPLORATION & PRODUCTION, LLC

FIELD DATE: 01-29-14	PAD NAME: HOLTON 12-C PAD
DRAWING DATE: 03-10-14	SURFACE LOCATION: NW 1/4 NE 1/4, SEC. 12, T6N, R65W, 6TH P.M.
BY: CLM	CHECKED: MLP
WELD COUNTY, COLORADO	

