



RADIAL CEMENT BOND LOG GAMMA RAY CCL

Company KERR MCGEE OIL AND GAS ONSHORE
Well DRY CREEK 35-35
Field WATTENBERG
County WELD
State COLORADO

Company KERR MCGEE OIL AND GAS ONSHORE
Well DRY CREEK 35-35
Field WATTENBERG
County WELD State COLORADO

Location: API # : 05-123-31018

Other Services

SEC 35 TWP 1N RGE 67
NWSW

Permanent Datum	G.L.	Elevation	5030'	Elevation
Log Measured From	K.B. 15'			K.B. 5045'
Drilling Measured From	K.B			D.F. 5044'
				G.L. 5030'

Date 16-APR-2014

Run Number	ONE		
Depth Driller	8730'		
Depth Logger	1621'		
Bottom Logged Interval	1621'		
Top Log Interval	SURFACE		
Open Hole Size	8.875		
Type Fluid	WATER		
Density / Viscosity	1.0		
Max. Recorded Temp.	91 DEG F		
Estimated Cement Top	630'		
Time Well Ready	ON ARRIVAL		
Time Logger on Bottom	N/A		
Equipment Number	4740		
Location	GREELEY, CO		
Recorded By	A.PAVEY		
Witnessed By	BILL SMITH		

Borehole Record				Tubing Record			
Run Number	Bit	From	To	Size	Weight	From	To

Casing Record	Size	Wgt/Ft	Top	Bottom
Surface String	8.63	24	0	1148'
Prot. String				
Production String	4.5	11.6	0	8521'
Liner				

<<< Fold Here >>>

All interpretations are opinions based on inferences from electrical or other measurements and we cannot and do not guarantee the accuracy or correctness of any interpretation, and we shall not, except in the case of gross or willful negligence on our part, be liable or responsible for any loss, costs, damages, or expenses incurred or sustained by anyone resulting from any interpretation made by any of our officers, agents or employees. These interpretations are also subject to our general terms and conditions set out in our current Price Schedule.

Comments

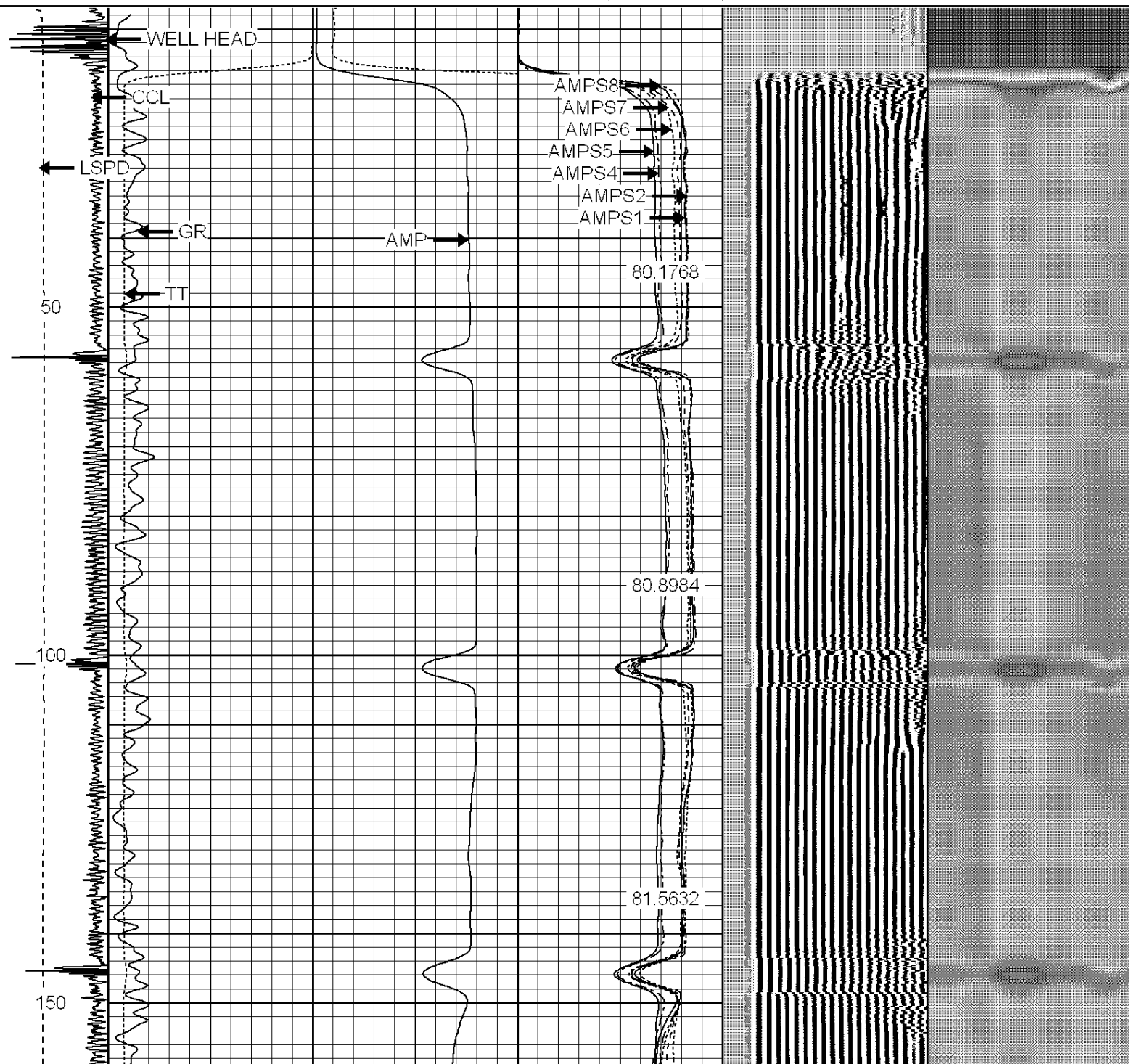
LOGGED TO VERIFY CEMENT BOND
THANK YOU FOR USING WARRIOR ENERGY SERVICES!!!



MAIN PASS 0# PSI

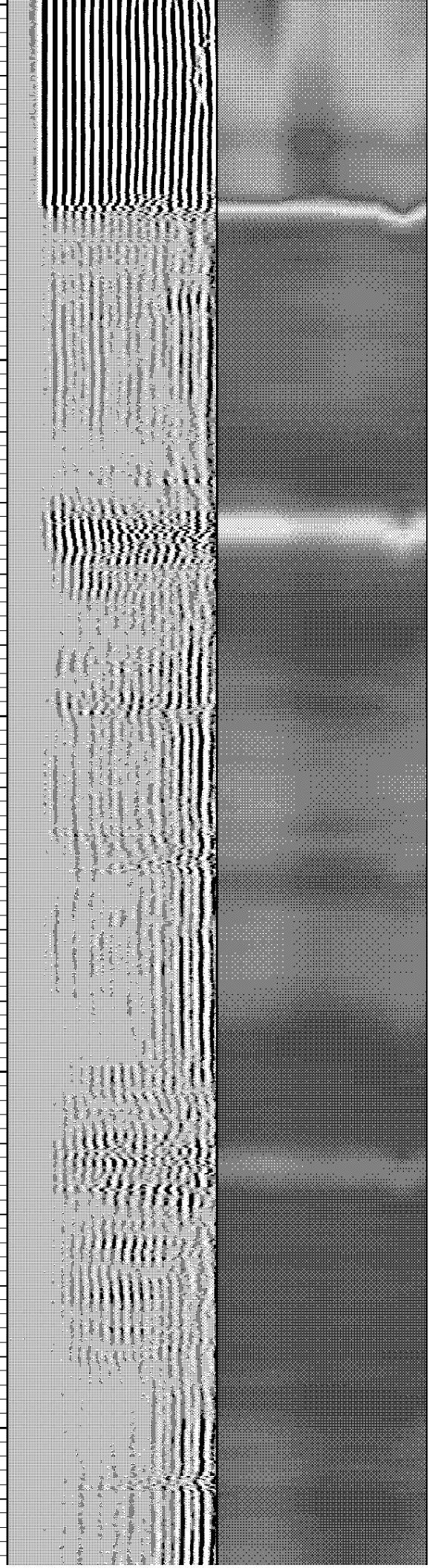
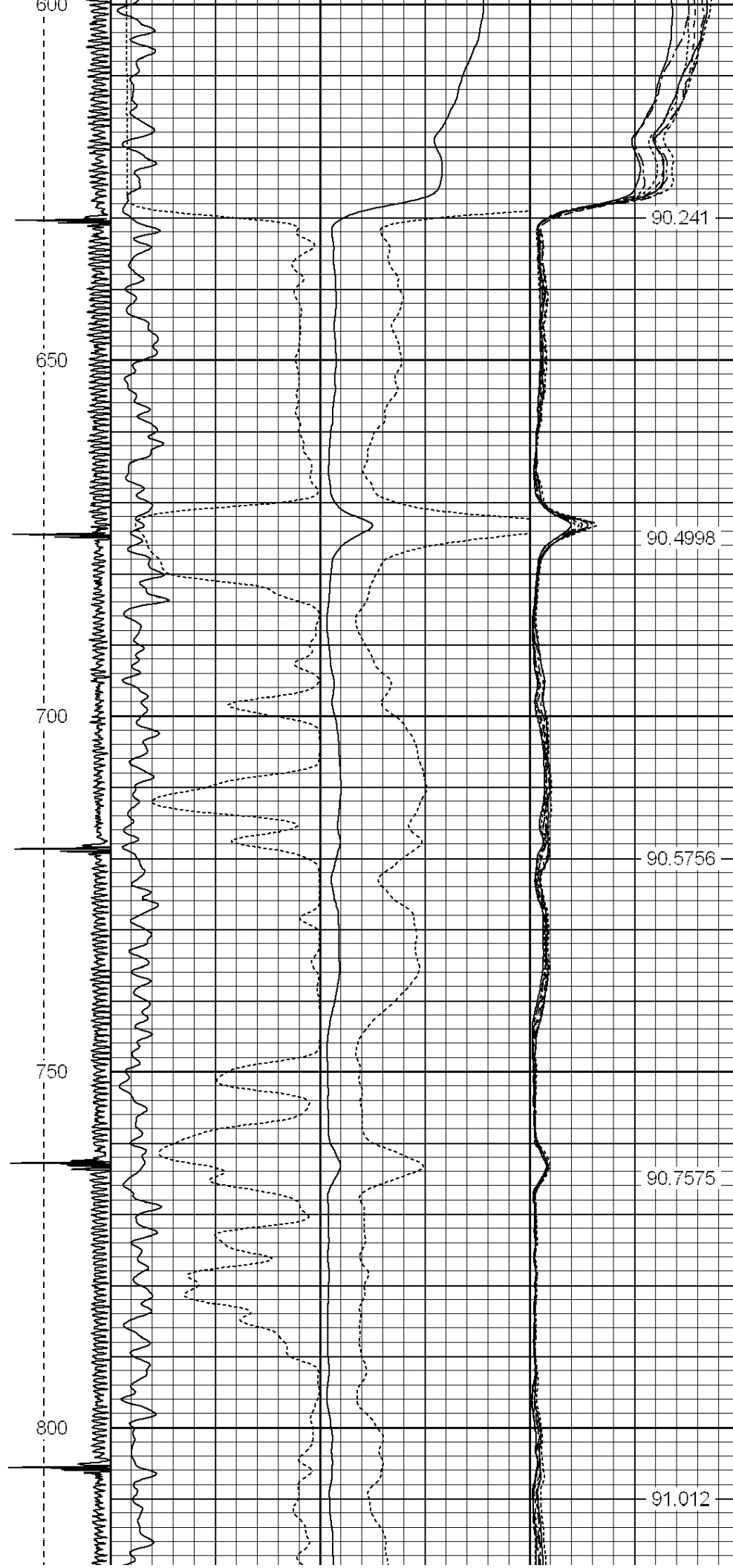
Database File: kerr mcgee dry creek 35-35.db
 Dataset Pathname: pass8
 Presentation Format: ips_rbt
 Dataset Creation: Wed Apr 16 08:31:52 2014 by Calc SCH 120126
 Charted by: Depth in Feet scaled 1:240

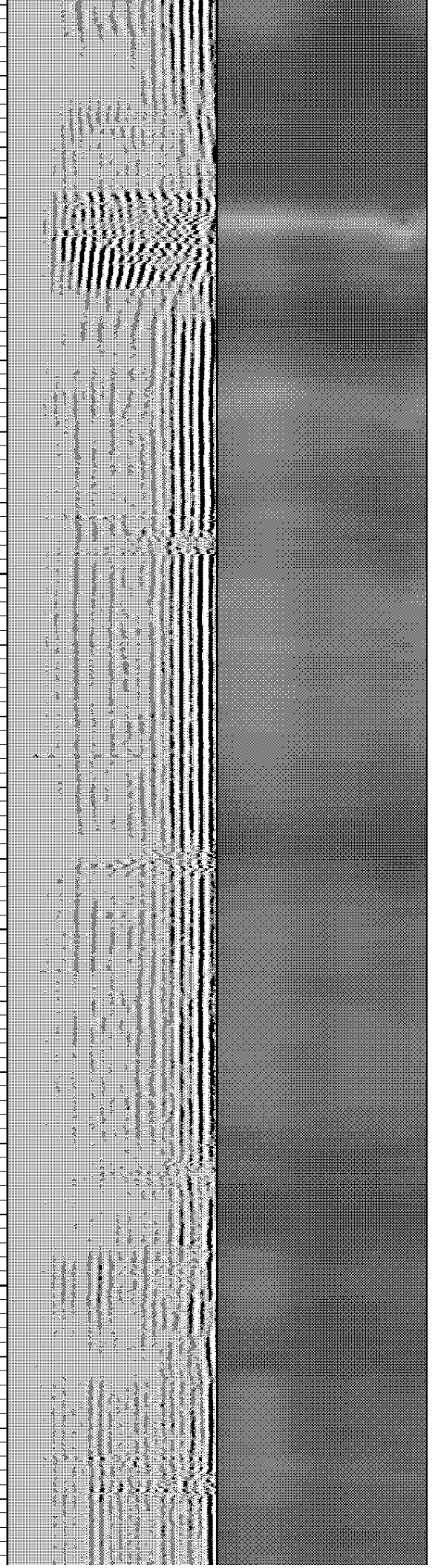
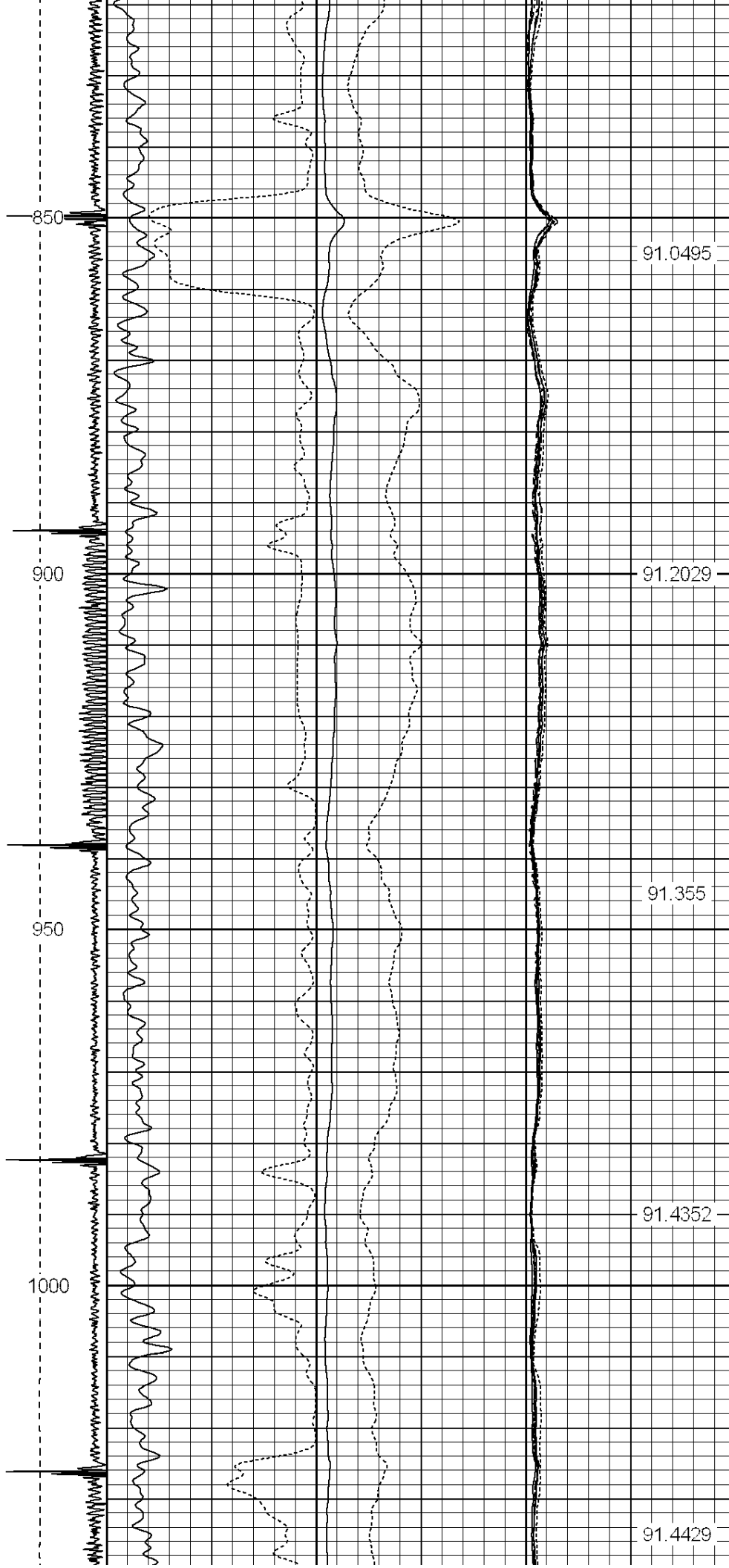
-9	CCL	1	200	TT (usec)	800	0	AMP (mV)	100	0	AMPS1	100	200	VDL	1200	1	Cement Map	8
	LSPD		0	GR (GAPI)	200	0	AMPx5 (mV)	20	0	AMPS2	100				1		100
	(ft/min)		200	GR (GAPI)	400				0	AMPS4	100						
0		250							0	AMPS5	100						
									0	AMPS6	100						
									0	AMPS7	100						
									0	AMPS8	100						
										IntTemp							
										(degF)							

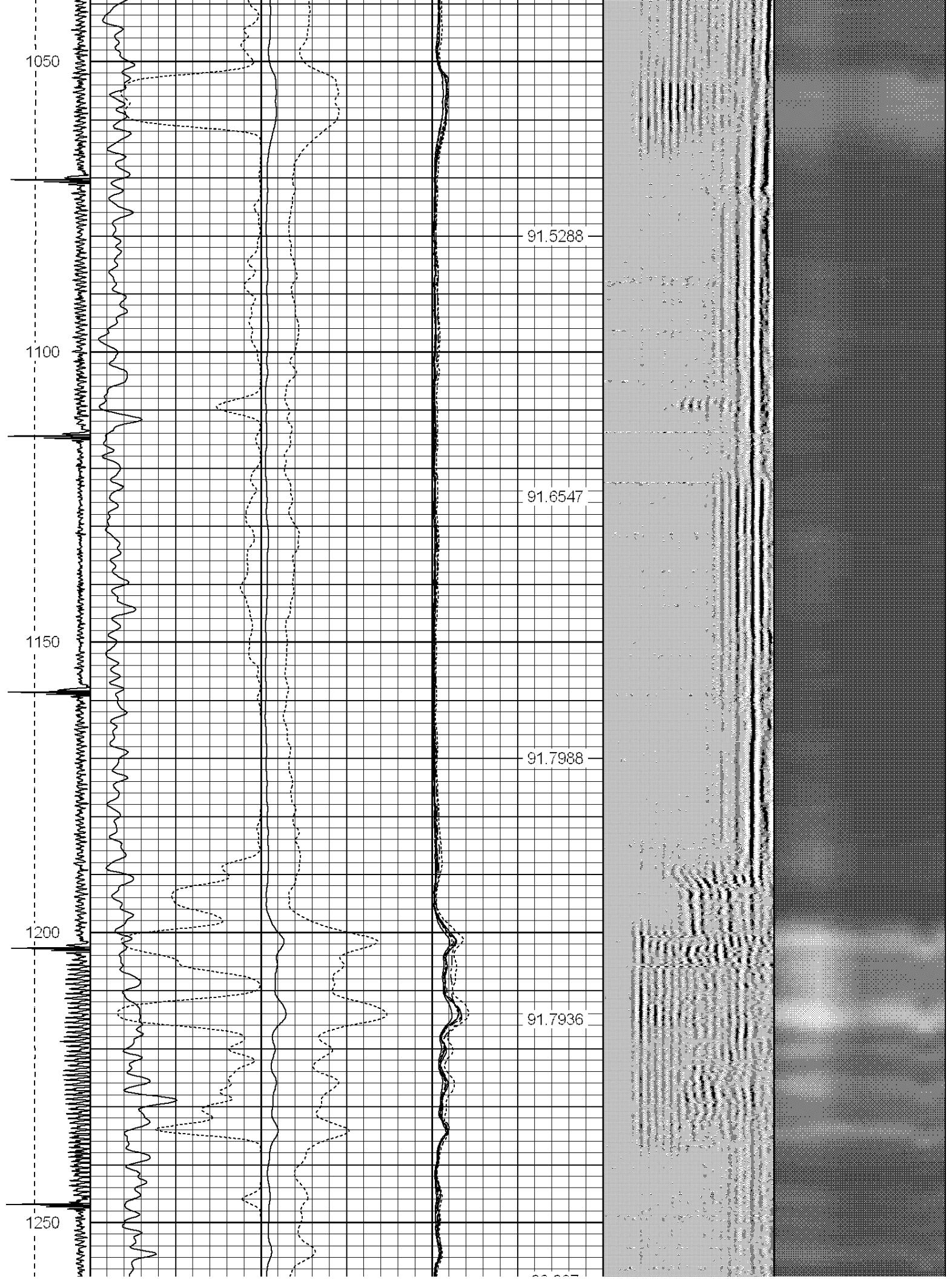


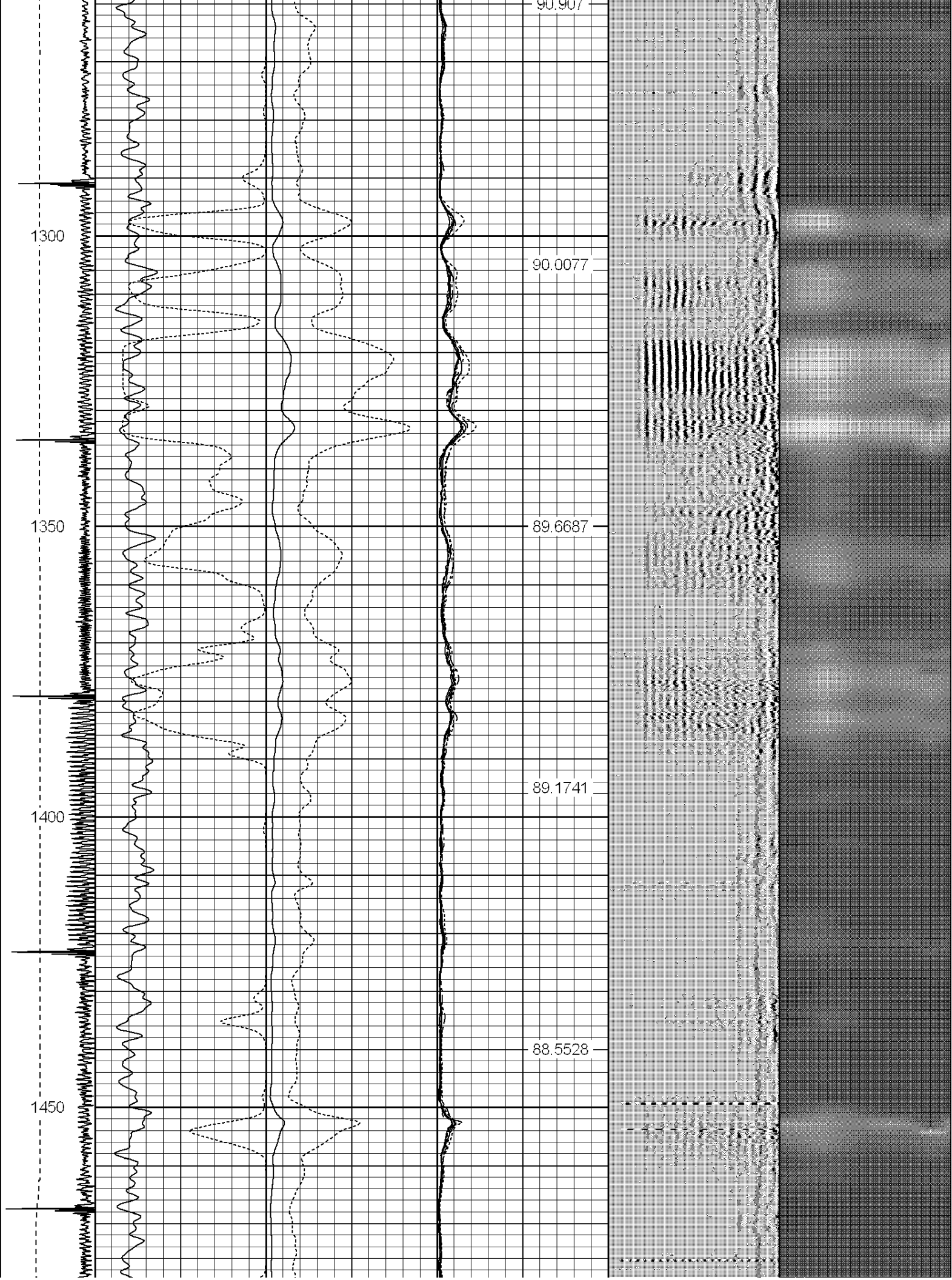


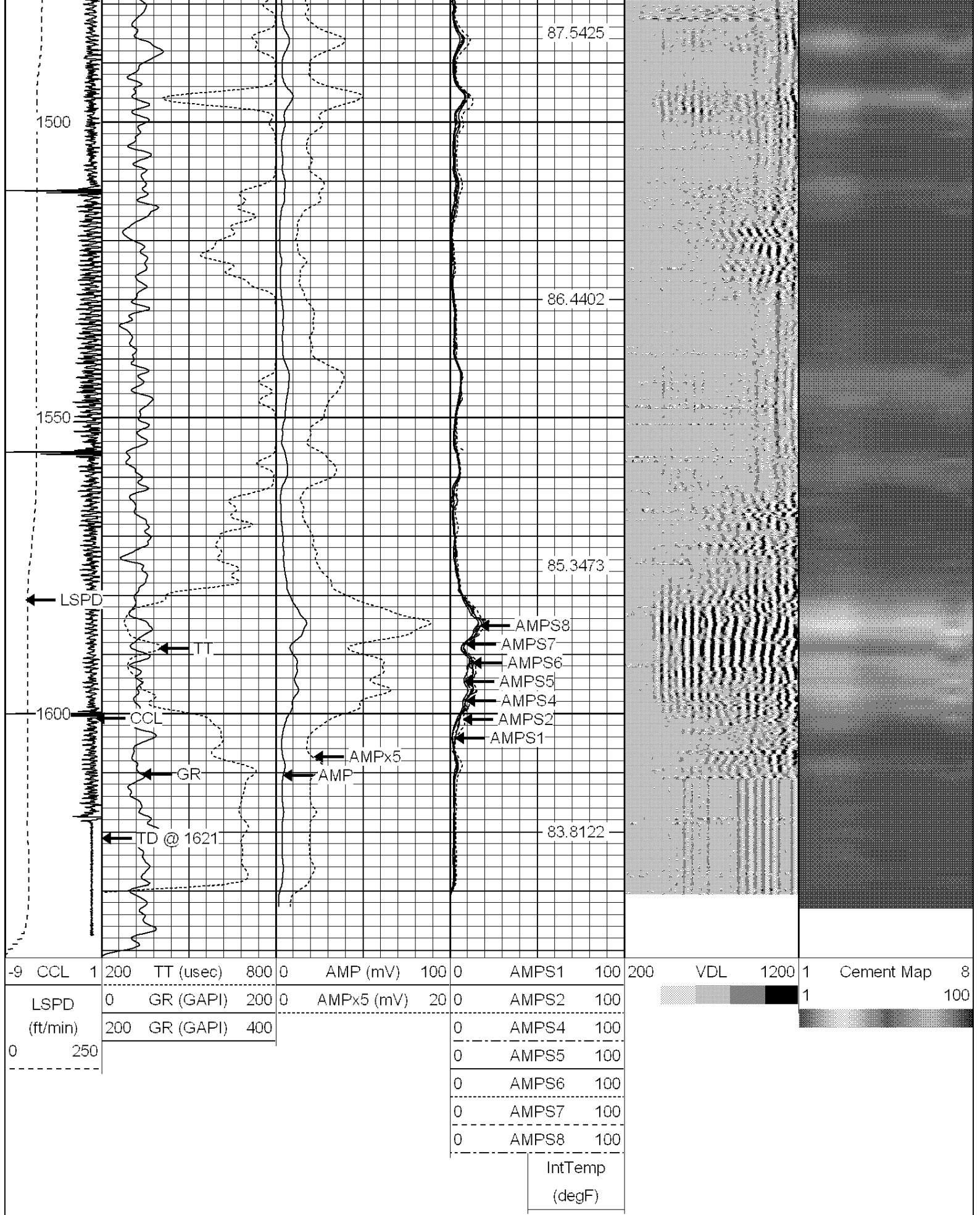








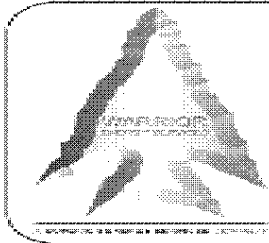






Sensor	Offset (ft)	Schematic	Description	Len (ft)	OD (in)	Wt (lb)
HEADVOLT	16.25		PTS275	2.83	2.75	
IntTemp	14.83					
WVFS3FT	11.58		RBT-Probe (Base) Probe Radii Bond Tool with Digital Telemetry	8.92	2.75	90.00
WVFCAL	11.58					
WVFS1	11.58					
WVFS2	11.58					
WVFS3	11.58					
WVFS4	11.58					
WVFS5	11.58					
WVFS6	11.58					
WVFS7	11.58					
WVFS8	11.58					
WVFS5FT	10.58					
CNLSC	6.00		CNT-Probe_B (275) 6 bow centralizer	3.00	2.75	40.00
CNSSC	5.17					
CCL	3.64		GR-Probe (275) Probe 2.75"	4.33	2.75	30.00
GR	0.90					

Total Length: 19.08 ft
Total Weight: 160.00 lb
O.D. 2.75 in



WARRIOR
ENERGY SERVICES

Company KERR MCGEE OIL AND GAS ONSHORE
Well DRY CREEK 35-35
Field WATTENBERG
County WELD
State COLORADO