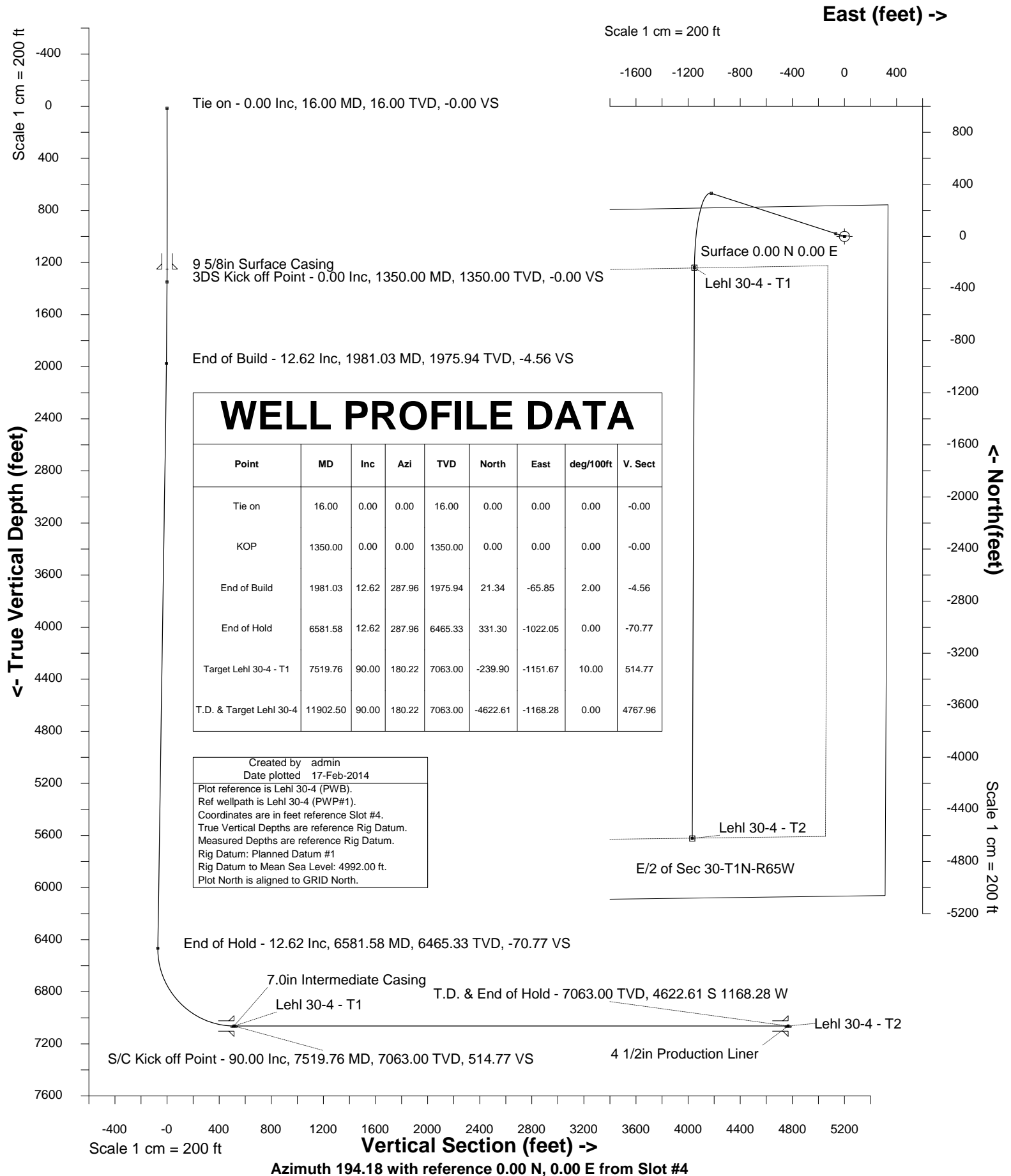


HRM Resources			
Location	Windsor	Slot	Slot #4
Field	WATTENBERG	Well	Lehl 30-4
Installation	Lehl Pad	Wellbore	Lehl 30-4 (PWB)

Slot	Slot #4
Well	Lehl 30-4
Wellbore	Lehl 30-4 (PWB)





INTEGRATED PETROLEUM TECHNOLOGIES, INC
SYSDRILL
Well Design Combined Report
Wellbore: Lehl 30-4 (PWB)

Wellhead Details							
Name	Northing	Easting	Latitude	Longitude	North	East	Elevation Above Inst.
Slot #4	1254421.6656	3224464.1977	40.02899000	-104.69843000	4.07S	47.57W	2.00

Declination			
Date	Source	Time	
14-Feb-2014	IGRF Model [1900.0-2015.0]		11:31

Site Details				
Name	Northing	Easting	Coord System Name	North Alignment
Lehl Pad	1254425.7386	3224511.7687	CO83-NF on NORTH AMERICAN DATUM 1983 datum	Grid

Summary Wellpath									
MD[ft]	Inc[deg]	Azi[deg]	TVD[ft]	North[ft]	East[ft]	Dogleg [deg/100ft]	Vertical Section[ft]	Northing	Easting
16.00	0.00	0.000	16.00	0.00N	0.00E		0.00	1254421.67	3224464.20
1350.00	0.00	0.000	1350.00	0.00N	0.00E	==>	0.00	1254421.67	3224464.20
1981.03	12.62	287.960	1975.94	21.34N	65.85W	2.00	-4.56	1254443.01	3224398.35
6581.58	12.62	287.960	6465.33	331.30N	1022.05W	==>	-70.77	1254752.96	3223442.18
7519.76	90.00	180.220	7063.00	239.90S	1151.67W	10.00	514.77	1254181.78	3223312.57
11902.50	90.00	180.220	7063.00	4622.61S	1168.28W	==>	4767.96	1249799.23	3223295.96

Interpolated Wellpath									
MD[ft]	Inc[deg]	Azi[deg]	TVD[ft]	North[ft]	East[ft]	Dogleg [deg/100ft]	Vertical Section[ft]	Northing	Easting
0.00	0.00	0.000	0.00	0.00N	0.00E		0.00	1254421.67	3224464.20
16.00	0.00	0.000	16.00	0.00N	0.00E	==>	0.00	1254421.67	3224464.20
100.00	0.00	0.000	100.00	0.00N	0.00E	==>	0.00	1254421.67	3224464.20
200.00	0.00	0.000	200.00	0.00N	0.00E	==>	0.00	1254421.67	3224464.20
300.00	0.00	0.000	300.00	0.00N	0.00E	==>	0.00	1254421.67	3224464.20
400.00	0.00	0.000	400.00	0.00N	0.00E	==>	0.00	1254421.67	3224464.20
500.00	0.00	0.000	500.00	0.00N	0.00E	==>	0.00	1254421.67	3224464.20
600.00	0.00	0.000	600.00	0.00N	0.00E	==>	0.00	1254421.67	3224464.20
700.00	0.00	0.000	700.00	0.00N	0.00E	==>	0.00	1254421.67	3224464.20
800.00	0.00	0.000	800.00	0.00N	0.00E	==>	0.00	1254421.67	3224464.20
900.00	0.00	0.000	900.00	0.00N	0.00E	==>	0.00	1254421.67	3224464.20
1000.00	0.00	0.000	1000.00	0.00N	0.00E	==>	0.00	1254421.67	3224464.20
1100.00	0.00	0.000	1100.00	0.00N	0.00E	==>	0.00	1254421.67	3224464.20
1200.00	0.00	0.000	1200.00	0.00N	0.00E	==>	0.00	1254421.67	3224464.20
1300.00	0.00	0.000	1300.00	0.00N	0.00E	==>	0.00	1254421.67	3224464.20
1334.00	0.00	0.000	1334.00	0.00N	0.00E	==>	0.00	1254421.67	3224464.20
1350.00	0.00	0.000	1350.00	0.00N	0.00E	==>	0.00	1254421.67	3224464.20
1434.00	1.68	287.960	1433.99	0.38N	1.17W	2.00	-0.08	1254422.05	3224463.03
1534.00	3.68	287.960	1533.87	1.82N	5.62W	2.00	-0.39	1254423.49	3224458.58
1634.00	5.68	287.960	1633.54	4.34N	13.38W	2.00	-0.93	1254426.00	3224450.82
1734.00	7.68	287.960	1732.85	7.92N	24.45W	2.00	-1.69	1254429.59	3224439.75
1834.00	9.68	287.960	1831.70	12.58N	38.80W	2.00	-2.69	1254434.24	3224425.40
1934.00	11.68	287.960	1929.96	18.29N	56.43W	2.00	-3.91	1254439.96	3224407.77
1981.03	12.62	287.960	1975.94	21.34N	65.85W	2.00	-4.56	1254443.01	3224398.35
2000.00	12.62	287.960	1994.45	22.62N	69.79W	==>	-4.83	1254444.29	3224394.41
2100.00	12.62	287.960	2092.03	29.36N	90.57W	==>	-6.27	1254451.02	3224373.63
2200.00	12.62	287.960	2189.62	36.10N	111.36W	==>	-7.71	1254457.76	3224352.84
2300.00	12.62	287.960	2287.20	42.83N	132.14W	==>	-9.15	1254464.50	3224332.06
2400.00	12.62	287.960	2384.79	49.57N	152.93W	==>	-10.59	1254471.24	3224311.28
2500.00	12.62	287.960	2482.37	56.31N	173.71W	==>	-12.03	1254477.97	3224290.49
2600.00	12.62	287.960	2579.95	63.05N	194.50W	==>	-13.47	1254484.71	3224269.71
2700.00	12.62	287.960	2677.54	69.78N	215.28W	==>	-14.91	1254491.45	3224248.92
2800.00	12.62	287.960	2775.12	76.52N	236.07W	==>	-16.35	1254498.18	3224228.14
2900.00	12.62	287.960	2872.71	83.26N	256.85W	==>	-17.79	1254504.92	3224207.36
3000.00	12.62	287.960	2970.29	90.00N	277.63W	==>	-19.23	1254511.66	3224186.57
3100.00	12.62	287.960	3067.87	96.73N	298.42W	==>	-20.66	1254518.40	3224165.79
3200.00	12.62	287.960	3165.46	103.47N	319.20W	==>	-22.10	1254525.13	3224145.01
3300.00	12.62	287.960	3263.04	110.21N	339.99W	==>	-23.54	1254531.87	3224124.22

All data is in Feet unless otherwise stated
Coordinates are from Slot MD's are from Rig (Planned Datum #1 4992.0ft above Mean Sea Level)
Vertical Section is from 0.00N 0.00E on azimuth 194.180 degrees
Bottom hole distance is 4767.96 Feet on azimuth 194.18 degrees from Wellhead
Calculation method uses Minimum Curvature method
Prepared by Integrated Petroleum Technologies, Inc.
Date Printed: 17-Feb-2014



INTEGRATED PETROLEUM TECHNOLOGIES, INC
SYSDRILL
Well Design Combined Report
Wellbore: Lehl 30-4 (PWB)

Interpolated Wellpath									
MD[ft]	Inc[deg]	Azi[deg]	TVD[ft]	North[ft]	East[ft]	Dogleg [deg/100ft]	Vertical Section[ft]	Northing	Easting
3400.00	12.62	287.960	3360.62	116.95N	360.77W	==>	-24.98	1254538.61	3224103.44
3500.00	12.62	287.960	3458.21	123.68N	381.56W	==>	-26.42	1254545.34	3224082.65
3600.00	12.62	287.960	3555.79	130.42N	402.34W	==>	-27.86	1254552.08	3224061.87
3700.00	12.62	287.960	3653.38	137.16N	423.13W	==>	-29.30	1254558.82	3224041.09
3800.00	12.62	287.960	3750.96	143.90N	443.91W	==>	-30.74	1254565.56	3224020.30
3900.00	12.62	287.960	3848.54	150.63N	464.70W	==>	-32.18	1254572.29	3223999.52
4000.00	12.62	287.960	3946.13	157.37N	485.48W	==>	-33.62	1254579.03	3223978.73
4100.00	12.62	287.960	4043.71	164.11N	506.27W	==>	-35.06	1254585.77	3223957.95
4200.00	12.62	287.960	4141.30	170.85N	527.05W	==>	-36.50	1254592.51	3223937.17
4300.00	12.62	287.960	4238.88	177.58N	547.84W	==>	-37.94	1254599.24	3223916.38
4400.00	12.62	287.960	4336.46	184.32N	568.62W	==>	-39.37	1254605.98	3223895.60
4500.00	12.62	287.960	4434.05	191.06N	589.41W	==>	-40.81	1254612.72	3223874.81
4600.00	12.62	287.960	4531.63	197.80N	610.19W	==>	-42.25	1254619.45	3223854.03
4700.00	12.62	287.960	4629.21	204.53N	630.97W	==>	-43.69	1254626.19	3223833.25
4800.00	12.62	287.960	4726.80	211.27N	651.76W	==>	-45.13	1254632.93	3223812.46
4900.00	12.62	287.960	4824.38	218.01N	672.54W	==>	-46.57	1254639.67	3223791.68
5000.00	12.62	287.960	4921.97	224.75N	693.33W	==>	-48.01	1254646.40	3223770.90
5100.00	12.62	287.960	5019.55	231.48N	714.11W	==>	-49.45	1254653.14	3223750.11
5200.00	12.62	287.960	5117.13	238.22N	734.90W	==>	-50.89	1254659.88	3223729.33
5300.00	12.62	287.960	5214.72	244.96N	755.68W	==>	-52.33	1254666.61	3223708.54
5400.00	12.62	287.960	5312.30	251.70N	776.47W	==>	-53.77	1254673.35	3223687.76
5500.00	12.62	287.960	5409.89	258.43N	797.25W	==>	-55.21	1254680.09	3223666.98
5600.00	12.62	287.960	5507.47	265.17N	818.04W	==>	-56.65	1254686.83	3223646.19
5700.00	12.62	287.960	5605.05	271.91N	838.82W	==>	-58.08	1254693.56	3223625.41
5800.00	12.62	287.960	5702.64	278.65N	859.61W	==>	-59.52	1254700.30	3223604.62
5900.00	12.62	287.960	5800.22	285.38N	880.39W	==>	-60.96	1254707.04	3223583.84
6000.00	12.62	287.960	5897.80	292.12N	901.18W	==>	-62.40	1254713.78	3223563.06
6100.00	12.62	287.960	5995.39	298.86N	921.96W	==>	-63.84	1254720.51	3223542.27
6200.00	12.62	287.960	6092.97	305.60N	942.74W	==>	-65.28	1254727.25	3223521.49
6300.00	12.62	287.960	6190.56	312.33N	963.53W	==>	-66.72	1254733.99	3223500.70
6400.00	12.62	287.960	6288.14	319.07N	984.31W	==>	-68.16	1254740.72	3223479.92
6500.00	12.62	287.960	6385.72	325.81N	1005.10W	==>	-69.60	1254747.46	3223459.14
6581.58	12.62	287.960	6465.33	331.30N	1022.05W	==>	-70.77	1254752.96	3223442.18
6600.00	12.20	279.610	6483.32	332.25N	1025.89W	10.00	-70.75	1254753.90	3223438.35
6700.00	14.43	236.160	6580.86	327.06N	1046.71W	10.00	-60.62	1254748.71	3223417.53
6800.00	21.56	212.880	6676.03	304.63N	1067.09W	10.00	-33.88	1254726.28	3223397.15
6900.00	30.31	201.610	6765.92	265.64N	1086.41W	10.00	8.66	1254687.29	3223377.83
7000.00	39.61	195.150	6847.82	211.27N	1104.08W	10.00	65.70	1254632.93	3223360.16
7100.00	49.15	190.840	6919.23	143.19N	1119.56W	10.00	135.50	1254564.85	3223344.68
7200.00	58.81	187.640	6977.98	63.45N	1132.39W	10.00	215.95	1254485.11	3223331.85
7300.00	68.53	185.030	7022.29	25.52S	1142.18W	10.00	304.61	1254396.15	3223322.06
7400.00	78.29	182.750	7050.80	121.02S	1148.62W	10.00	398.77	1254300.65	3223315.62
7500.00	88.07	180.630	7062.67	220.14S	1151.53W	10.00	495.59	1254201.53	3223312.71
7519.76	90.00	180.220	7063.00	239.90S	1151.67W	10.00	514.77	1254181.78	3223312.57
7600.00	90.00	180.220	7063.00	320.14S	1151.98W	==>	592.65	1254101.54	3223312.26
7700.00	90.00	180.220	7063.00	420.14S	1152.36W	==>	689.69	1254001.54	3223311.88
7800.00	90.00	180.220	7063.00	520.14S	1152.74W	==>	786.73	1253901.55	3223311.50
7900.00	90.00	180.220	7063.00	620.14S	1153.12W	==>	883.78	1253801.55	3223311.13
8000.00	90.00	180.220	7063.00	720.13S	1153.49W	==>	980.82	1253701.56	3223310.75
8100.00	90.00	180.220	7063.00	820.13S	1153.87W	==>	1077.86	1253601.56	3223310.37
8200.00	90.00	180.220	7063.00	920.13S	1154.25W	==>	1174.91	1253501.57	3223309.99
8300.00	90.00	180.220	7063.00	1020.13S	1154.63W	==>	1271.95	1253401.57	3223309.61
8400.00	90.00	180.220	7063.00	1120.13S	1155.01W	==>	1369.00	1253301.58	3223309.23
8500.00	90.00	180.220	7063.00	1220.13S	1155.39W	==>	1466.04	1253201.58	3223308.85
8600.00	90.00	180.220	7063.00	1320.13S	1155.77W	==>	1563.08	1253101.59	3223308.47
8700.00	90.00	180.220	7063.00	1420.13S	1156.15W	==>	1660.13	1253001.59	3223308.09
8800.00	90.00	180.220	7063.00	1520.13S	1156.53W	==>	1757.17	1252901.59	3223307.72
8900.00	90.00	180.220	7063.00	1620.13S	1156.90W	==>	1854.21	1252801.60	3223307.34
9000.00	90.00	180.220	7063.00	1720.13S	1157.28W	==>	1951.26	1252701.60	3223306.96
9100.00	90.00	180.220	7063.00	1820.13S	1157.66W	==>	2048.30	1252601.61	3223306.58
9200.00	90.00	180.220	7063.00	1920.13S	1158.04W	==>	2145.35	1252501.61	3223306.20

All data is in Feet unless otherwise stated
Coordinates are from Slot MD's are from Rig and TVD's are from Rig (Planned Datum #1 4992.0ft above Mean Sea Level)
Vertical Section is from 0.00N 0.00E on azimuth 194.180 degrees
Bottom hole distance is 4767.96 Feet on azimuth 194.18 degrees from Wellhead
Calculation method uses Minimum Curvature method
Prepared by Integrated Petroleum Technologies, Inc.
Date Printed: 17-Feb-2014



INTEGRATED PETROLEUM TECHNOLOGIES, INC
SYSDRILL
Well Design Combined Report
Wellbore: Lehl 30-4 (PWB)

Interpolated Wellpath									
MD[ft]	Inc[deg]	Azi[deg]	TVD[ft]	North[ft]	East[ft]	Dogleg [deg/100ft]	Vertical Section[ft]	Northing	Easting
9300.00	90.00	180.220	7063.00	2020.13S	1158.42W	==>	2242.39	1252401.62	3223305.82
9400.00	90.00	180.220	7063.00	2120.12S	1158.80W	==>	2339.43	1252301.62	3223305.44
9500.00	90.00	180.220	7063.00	2220.12S	1159.18W	==>	2436.48	1252201.63	3223305.06
9600.00	90.00	180.220	7063.00	2320.12S	1159.56W	==>	2533.52	1252101.63	3223304.68
9700.00	90.00	180.220	7063.00	2420.12S	1159.94W	==>	2630.56	1252001.63	3223304.31
9800.00	90.00	180.220	7063.00	2520.12S	1160.32W	==>	2727.61	1251901.64	3223303.93
9900.00	90.00	180.220	7063.00	2620.12S	1160.69W	==>	2824.65	1251801.64	3223303.55
10000.00	90.00	180.220	7063.00	2720.12S	1161.07W	==>	2921.70	1251701.65	3223303.17
10100.00	90.00	180.220	7063.00	2820.12S	1161.45W	==>	3018.74	1251601.65	3223302.79
10200.00	90.00	180.220	7063.00	2920.12S	1161.83W	==>	3115.78	1251501.66	3223302.41
10300.00	90.00	180.220	7063.00	3020.12S	1162.21W	==>	3212.83	1251401.66	3223302.03
10400.00	90.00	180.220	7063.00	3120.12S	1162.59W	==>	3309.87	1251301.67	3223301.65
10500.00	90.00	180.220	7063.00	3220.12S	1162.97W	==>	3406.91	1251201.67	3223301.27
10600.00	90.00	180.220	7063.00	3320.12S	1163.35W	==>	3503.96	1251101.67	3223300.90
10700.00	90.00	180.220	7063.00	3420.12S	1163.73W	==>	3601.00	1251001.68	3223300.52
10800.00	90.00	180.220	7063.00	3520.11S	1164.10W	==>	3698.05	1250901.68	3223300.14
10900.00	90.00	180.220	7063.00	3620.11S	1164.48W	==>	3795.09	1250801.69	3223299.76
11000.00	90.00	180.220	7063.00	3720.11S	1164.86W	==>	3892.13	1250701.69	3223299.38
11100.00	90.00	180.220	7063.00	3820.11S	1165.24W	==>	3989.18	1250601.70	3223299.00
11200.00	90.00	180.220	7063.00	3920.11S	1165.62W	==>	4086.22	1250501.70	3223298.62
11300.00	90.00	180.220	7063.00	4020.11S	1166.00W	==>	4183.26	1250401.71	3223298.24
11400.00	90.00	180.220	7063.00	4120.11S	1166.38W	==>	4280.31	1250301.71	3223297.86
11500.00	90.00	180.220	7063.00	4220.11S	1166.76W	==>	4377.35	1250201.72	3223297.48
11600.00	90.00	180.220	7063.00	4320.11S	1167.14W	==>	4474.40	1250101.72	3223297.11
11700.00	90.00	180.220	7063.00	4420.11S	1167.51W	==>	4571.44	1250001.72	3223296.73
11800.00	90.00	180.220	7063.00	4520.11S	1167.89W	==>	4668.48	1249901.73	3223296.35
11900.00	90.00	180.220	7063.00	4620.11S	1168.27W	==>	4765.53	1249801.73	3223295.97
11902.50	90.00	180.220	7063.00	4622.61S	1168.28W	==>	4767.96	1249799.23	3223295.96

All data is in Feet unless otherwise stated
Coordinates are from Slot MD's are from Rig and TVD's are from Rig (Planned Datum #1 4992.0ft above Mean Sea Level)
Vertical Section is from 0.00N 0.00E on azimuth 194.180 degrees
Bottom hole distance is 4767.96 Feet on azimuth 194.18 degrees from Wellhead
Calculation method uses Minimum Curvature method
Prepared by Integrated Petroleum Technologies, Inc.
Date Printed: 17-Feb-2014



INTEGRATED PETROLEUM TECHNOLOGIES, INC
SYSDRILL
Well Design Combined Report
Wellbore: Lehl 30-4 (PWB)

Hole Sections								
Diameter [in]	Start MD[ft]	Start TVD[ft]	Start North[ft]	Start East[ft]	End MD[ft]	End TVD[ft]	End North[ft]	End East[ft]
13 1/2	16.00	16.00	0.00N	0.00E	1250.00	1250.00	0.00N	0.00E
8 3/4	1250.00	1250.00	0.00N	0.00E	7519.00	7063.00	239.14S	1151.67W
6 1/8	7519.00	7063.00	239.14S	1151.67W	11902.00	7063.00	4622.11S	1168.28W

Casings								
Name	Top MD[ft]	Top TVD[ft]	Top North[ft]	Top East[ft]	Shoe MD[ft]	Shoe TVD[ft]	Shoe North[ft]	Shoe East[ft]
9 5/8in Surface Casing	16.00	16.00	0.00N	0.00E	1250.00	1250.00	0.00N	0.00E
7.0in Intermediate Casing	16.00	16.00	0.00N	0.00E	7519.00	7063.00	239.14S	1151.67W
4 1/2in Production Liner	7319.00	7028.95	43.25S	1143.67W	11902.00	7063.00	4622.11S	1168.28W

Targets								
Name	North[ft]	East[ft]	TVD[ft]	Latitude	Longitude	Northing	Easting	Last Revised
Lehl 30-4 - T1	239.90S	1151.67W	7063.00	40.02836000	-104.70255000	1254181.78	3223312.57	
Lehl 30-4 - T2	4622.61S	1168.28W	7063.00	40.01633000	-104.70275000	1249799.23	3223295.96	

Survey Tool Program						
Reference	Survey Name	MD[ft]	TVD[ft]	Survey Tool	Error Model	
156056	Planned	11902.50	7063.00	WdW Rate Gyro	Standard	

Notes

All data is in Feet unless otherwise stated
Coordinates are from Slot MD's are from Rig and TVD's are from Rig (Planned Datum #1 4992.0ft above Mean Sea Level)
Vertical Section is from 0.00N 0.00E on azimuth 194.180 degrees
Bottom hole distance is 4767.96 Feet on azimuth 194.18 degrees from Wellhead
Calculation method uses Minimum Curvature method
Prepared by Integrated Petroleum Technologies, Inc.
Date Printed: 17-Feb-2014



SYSDRILL
Closest Approach + Clearance Factor Summary Report
Wellbore: Lehl 30-4 (PWB)

Ellipse separations are reported ONLY if BOTH wells have uncertainty data
Only Depth and Magnetic Reference Field error terms are correlated across tie points
Proximities beyond 2500.00ft with expansion rate of 0.00ft/1000ft are not reported
Scan limit is calculated on CENTRE to CENTRE distance

Summary data uses Closest Approach clearance calculation for all minima
Hole size/Casings ARE included
Hole size/Casings are NOT subtracted from Centre-Centre distance
Confidence limit of 95.00% / 2.80 SD.

Wellbore		
Name	Created	Last Revised
Lehl 30-4 (PWB)	14-Feb-2014	17-Feb-2014

Well		
Name	Government ID	Last Revised
Lehl 30-4		14-Feb-2014

Slot						
Name	Grid Northing	Grid Easting	Latitude	Longitude	North	East
Slot #4	1254421.6656	3224464.1977	40.02899000	-104.69843000	4.07S	47.57W

Installation				
Name	Easting	Northing	Coord System Name	North Alignment
Lehl Pad	3224511.7687	1254425.7386	CO83-NF on NORTH AMERICAN DATUM 1983 datum	Grid

Field				
Name	Easting	Northing	Coord System Name	North Alignment
WATTENBERG	3217412.9943	1407601.8800	CO83-NF on NORTH AMERICAN DATUM 1983 datum	Grid

Clearance Summary										
Offset WellName	Offset Wellbore	Offset Slot	Offset Structure	Separation [ft]	MD[ft]	Diverging From[ft]	Ellipse Separation [ft]	Ellipse MD[ft]	Clearance Factor	Clearance MD[ft]
Lehl 30-3	Lehl 30-3 (PWB)	Slot #3	Lehl Pad	14.47	1350.00	1350.00	11.52	1246.31	4.91	1246.31
Lehl 30-5	Lehl 30-5 (PWB)	Slot #5	Lehl Pad	16.80	1299.00	1299.00	13.86	1246.31	5.70	1246.31
Lehl 30-2	Lehl 30-2 (PWB)	Slot #2	Lehl Pad	31.02	1350.00	1350.00	28.07	1246.31	7.81	11892.64
Lehl 30-6	Lehl 30-6 (PWB)	Slot #6	Lehl Pad	33.61	1248.00	1248.00	30.66	1248.00	7.82	11892.64
Lehl 30-1	Lehl 30-1 (PWB)	Slot #1	Lehl Pad	47.75	1350.00	7519.76	44.80	1246.31	13.41	11892.64
MARGUERITE B LEHL #A-1	MARGUERITE B LEHL #A-1 (AWB)	Slot #7	Offsets	486.79	8943.90	8943.90	445.70	8956.29	11.48	9054.71
M B LEHL A #1	M B LEHL A #1 (AWB)	Slot #6	Offsets	525.49	9049.68	9049.68	477.98	9054.71	10.76	9153.14
ELLS #XX 19-4D	ELLS #XX 19-4D (AWB)	Slot #2	Offsets	964.88	6316.00	6316.00	931.49	6397.23	28.14	6626.89
CHARLES M BROWN GAS UNIT #1	CHARLES M BROWN GAS UNIT #1 (AWB)	Slot #3	Offsets	1902.46	1350.00	1350.00	1890.49	1377.55	84.54	6101.96
GILMORE #1-30	GILMORE #1-30 (AWB)	Slot #8	Offsets	1967.25	8244.68	8244.68	1931.66	8267.31	48.06	9136.73
DECHANT	DECHANT	Slot #1	Offsets	2458.09	6905.76	6905.76	2427.76	6905.76	77.81	7299.46

All data is in Feet unless otherwise stated
Coordinates are from Slot MD's are from Rig and TVD's are from Rig (Planned Datum #1 4992.0ft above Mean Sea Level)
Vertical Section is from 0.00N 0.00E on azimuth 194.180 degrees
Prepared by Integrated Petroleum Technologies, Inc.
Date Printed: 17-Feb-2014



SYSDRILL
Closest Approach + Clearance Factor Summary Report
Wellbore: Lehl 30-4 (PWB)

Clearance Summary										
Offset WellName	Offset Wellbore	Offset Slot	Offset Structure	Separation [ft]	MD[ft]	Diverging From[ft]	Ellipse Separation [ft]	Ellipse MD[ft]	Clearance Factor	Clearance MD[ft]
#1-19	#1-19 (AWB)									
KILKER #1	KILKER #1 (AWB)	Slot #4	Offsets	2461.54	11324.81	11324.81	2400.55	11334.90	39.93	11630.17