

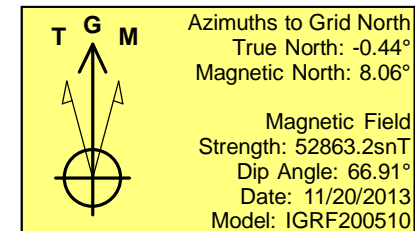
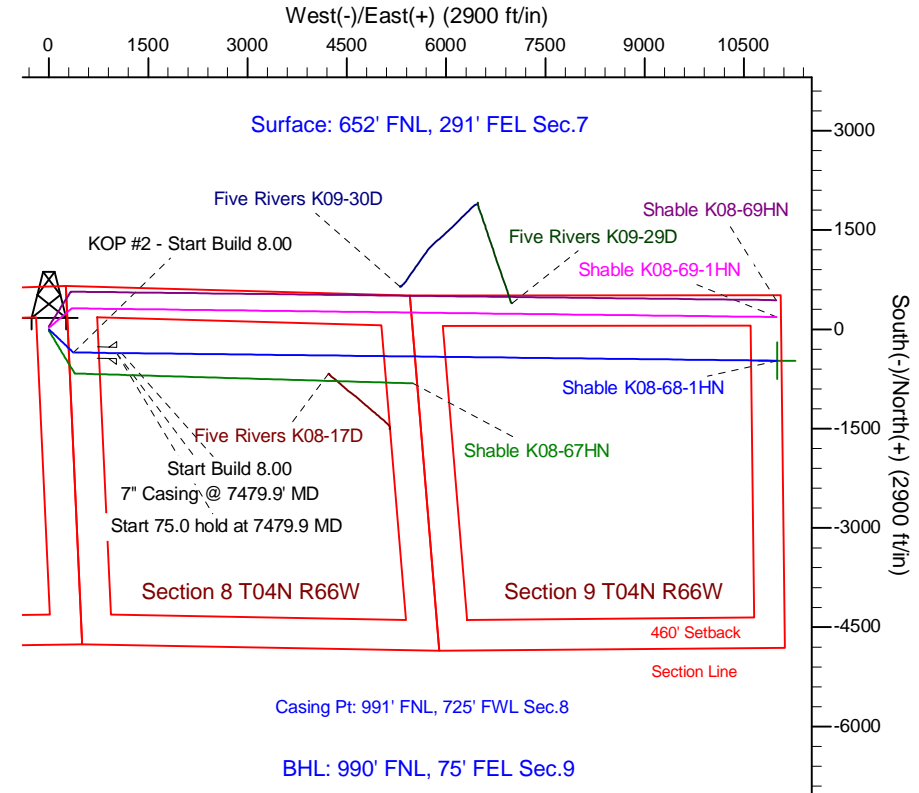
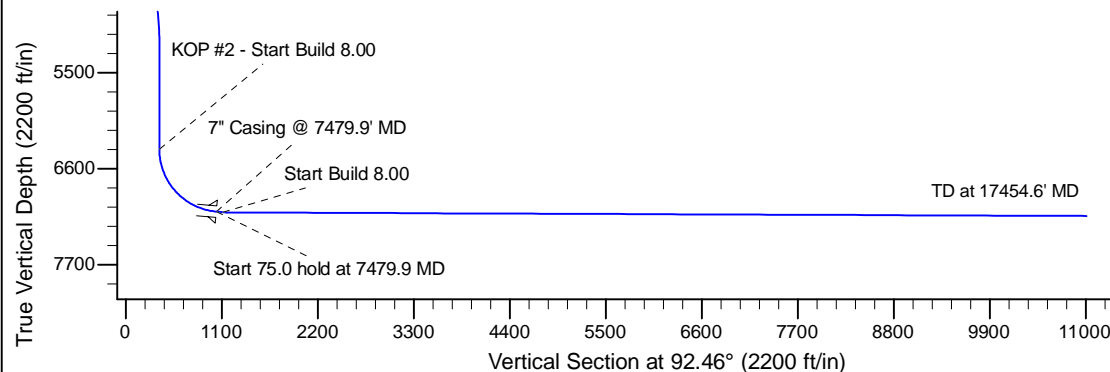
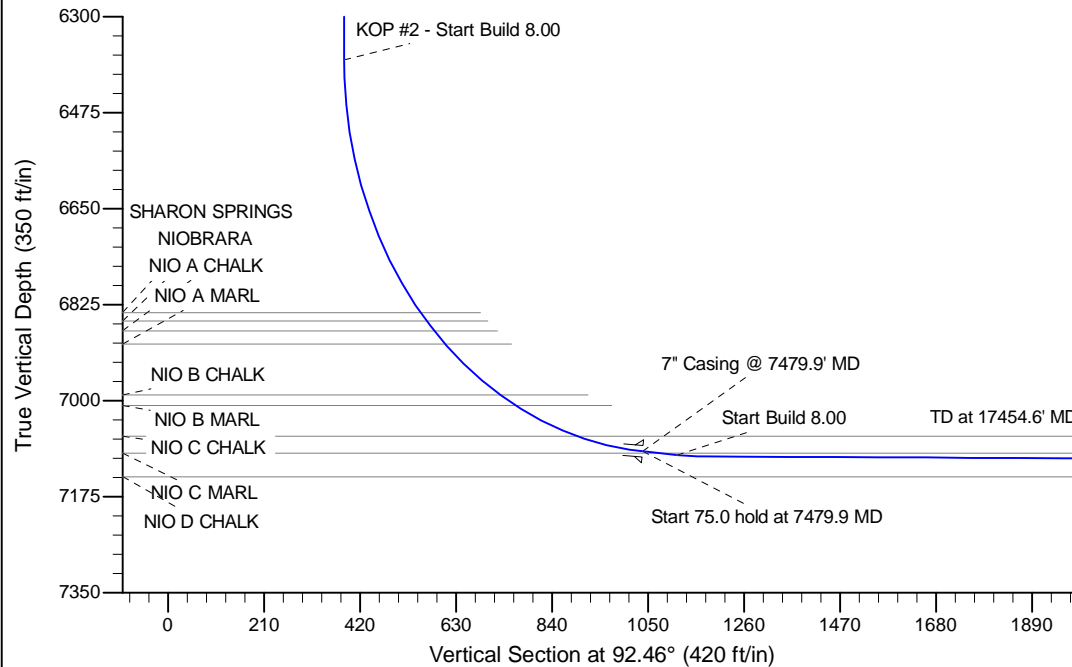
Project: Wattenberg Field
 Site: K (Sec.7-T04N-R66W) Weld County, CO
 Well: Shable K08-68-1HN
 Wellbore: Original Drilling
 Design: APD - Rev 0

Northern Region Drilling - Working

Geodetic System: US State Plane 1983
 Datum: North American Datum 1983
 Ellipsoid: GRS 1980
 Zone: Colorado Northern Zone
 System Datum: Mean Sea Level

SECTION DETAILS

Sec	MD	Inc	Azi	TVD	+N/-S	+E/-W	Dleg	TFace	VSec	Target
1	0.0	0.00	0.00	0.0	0.0	0.0	0.00	0.00	0.0	
2	1500.0	0.00	0.00	1500.0	0.0	0.0	0.00	0.00	0.0	
3	1950.3	9.01	133.41	1948.4	-24.3	25.7	2.00	133.41	26.7	
4	4753.0	9.01	133.41	4716.6	-325.7	344.3	0.00	0.00	358.0	
5	5203.2	0.00	0.00	5165.0	-350.0	370.0	2.00	180.00	384.7	
6	6417.4	0.00	0.00	6379.2	-350.0	370.0	0.00	0.00	384.7	
7	7479.9	85.00	90.67	7092.6	-357.6	1023.7	8.00	90.67	1038.2	
8	7554.9	85.00	90.67	7099.2	-358.5	1098.4	0.00	0.00	1112.8	
9	7614.4	89.76	90.67	7101.9	-359.1	1157.9	8.00	0.00	1172.2	
10	17454.6	89.76	90.67	7143.1	-473.4	10997.4	0.00	0.00	11007.5	Shable K08-68-1HN BHL 990'FNL, 75'FEL



WELL DETAILS: Shable K08-68-1HN					
Ground Level: 4715.0					
0.0	0.0	Northing 1364661.41	Easting 3191522.81	Latitude 40.332360	Longitude -104.813010
Plan: APD - Rev 0 (Shable K08-68-1HN/Original Drilling)					
Created By: Shailey Jewell			Date: 10:42, March 05 2014		
OK to submit with 2A as per Noble Drilling 4/01/2014 7:07					