

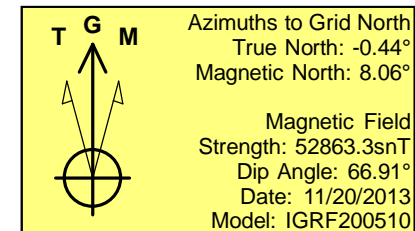
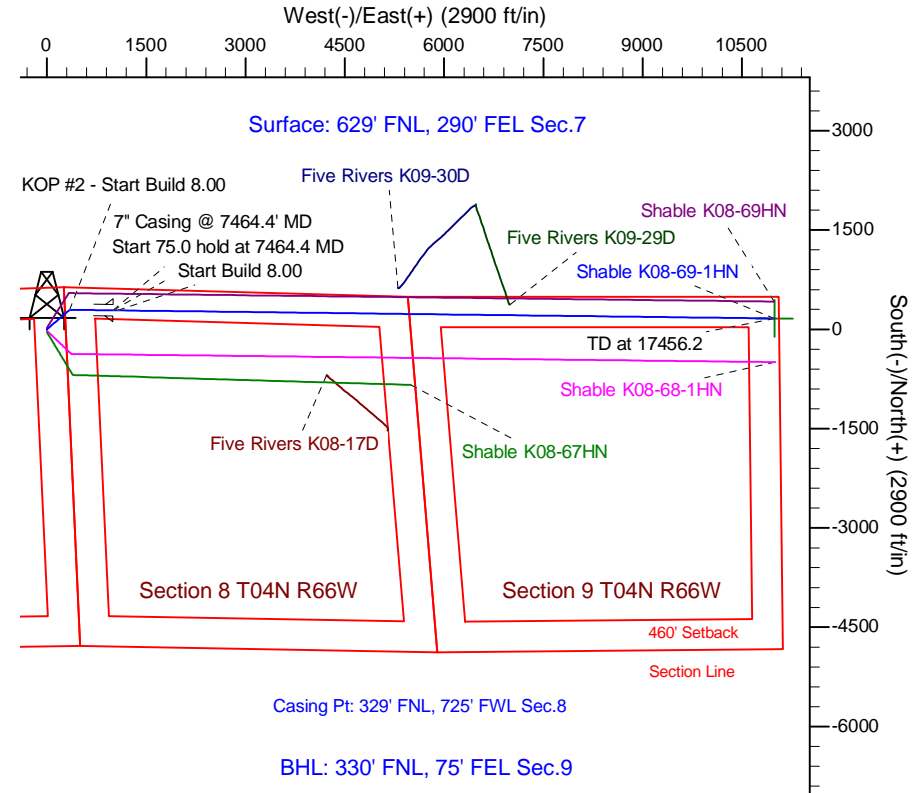
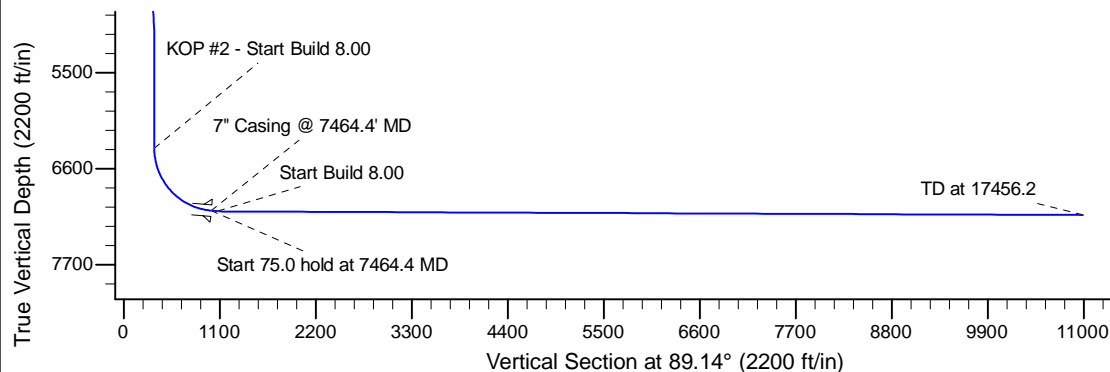
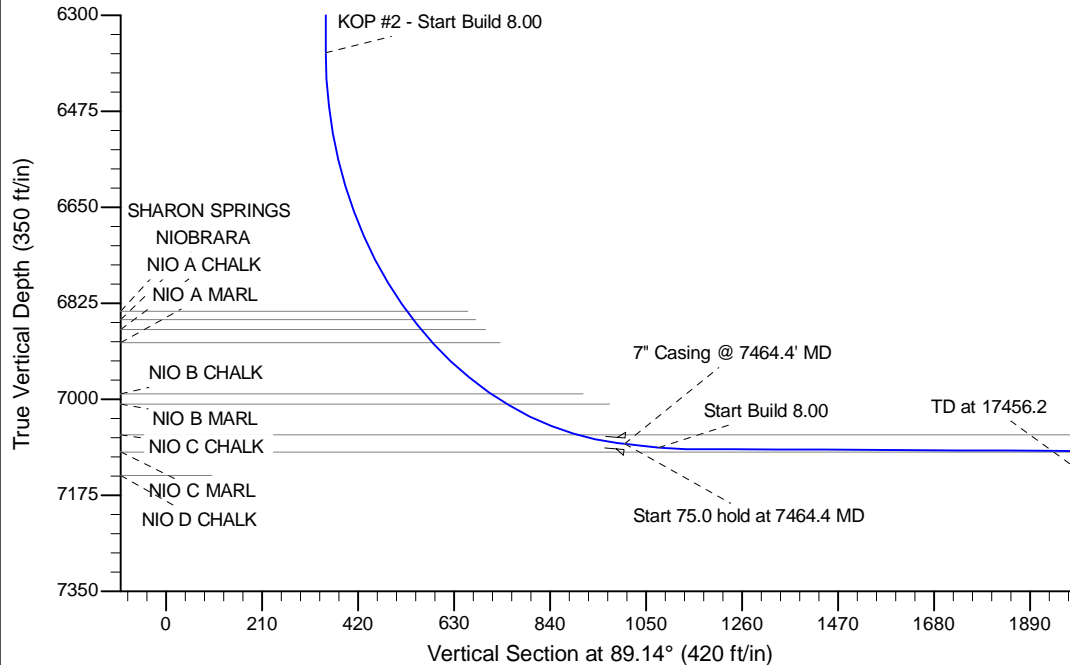
Project: Wattenberg Field  
 Site: K (Sec.7-T04N-R66W) Weld County, CO  
 Well: Shable K08-69-1HN  
 Wellbore: Original Drilling  
 Design: APD - Rev 0

# Northern Region Drilling - Working

Geodetic System: US State Plane 1983  
 Datum: North American Datum 1983  
 Ellipsoid: GRS 1980  
 Zone: Colorado Northern Zone  
 System Datum: Mean Sea Level

## SECTION DETAILS

Sec	MD	Inc	Azi	TVD	+N/-S	+E/-W	Dleg	TFace	VSec	Target
1	0.0	0.00	0.00	0.0	0.0	0.0	0.00	0.00	0.0	
2	1800.0	0.00	0.00	1800.0	0.0	0.0	0.00	0.00	0.0	
3	2251.3	9.03	49.47	2249.4	23.1	27.0	2.00	49.47	27.3	
4	4692.7	9.03	49.47	4660.6	271.9	318.0	0.00	0.00	322.1	
5	5144.0	0.00	0.00	5110.0	295.0	345.0	2.00	180.00	349.4	
6	6401.9	0.00	0.00	6368.0	295.0	345.0	0.00	0.00	349.4	
7	7464.4	85.00	90.70	7081.5	287.0	998.7	8.00	90.70	1002.9	
8	7539.4	85.00	90.70	7088.0	286.0	1073.4	0.00	0.00	1077.6	
9	7598.9	89.76	90.70	7090.7	285.3	1132.9	8.00	0.00	1137.0	
10	17456.2	89.76	90.70	7132.0	164.1	10989.3	0.00	0.00	10990.6	Shable K08-69-1HN BHL 330'FNL, 75'FEL



WELL DETAILS: Shable K08-69-1HN					
Ground Level: 4715.0					
0.0	0.0	Northing 1364683.27	Easting 3191522.64	Latitude 40.332420	Longitude -104.813010
Plan: APD - Rev 0 (Shable K08-69-1HN/Original Drilling)					
Created By: Shailey Jewell			Date: 10:51, March 05 2014		
OK to submit with 2A as per Noble Drilling 4/01/2014 7:06					