

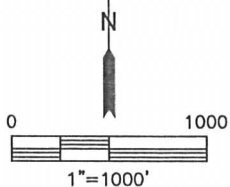
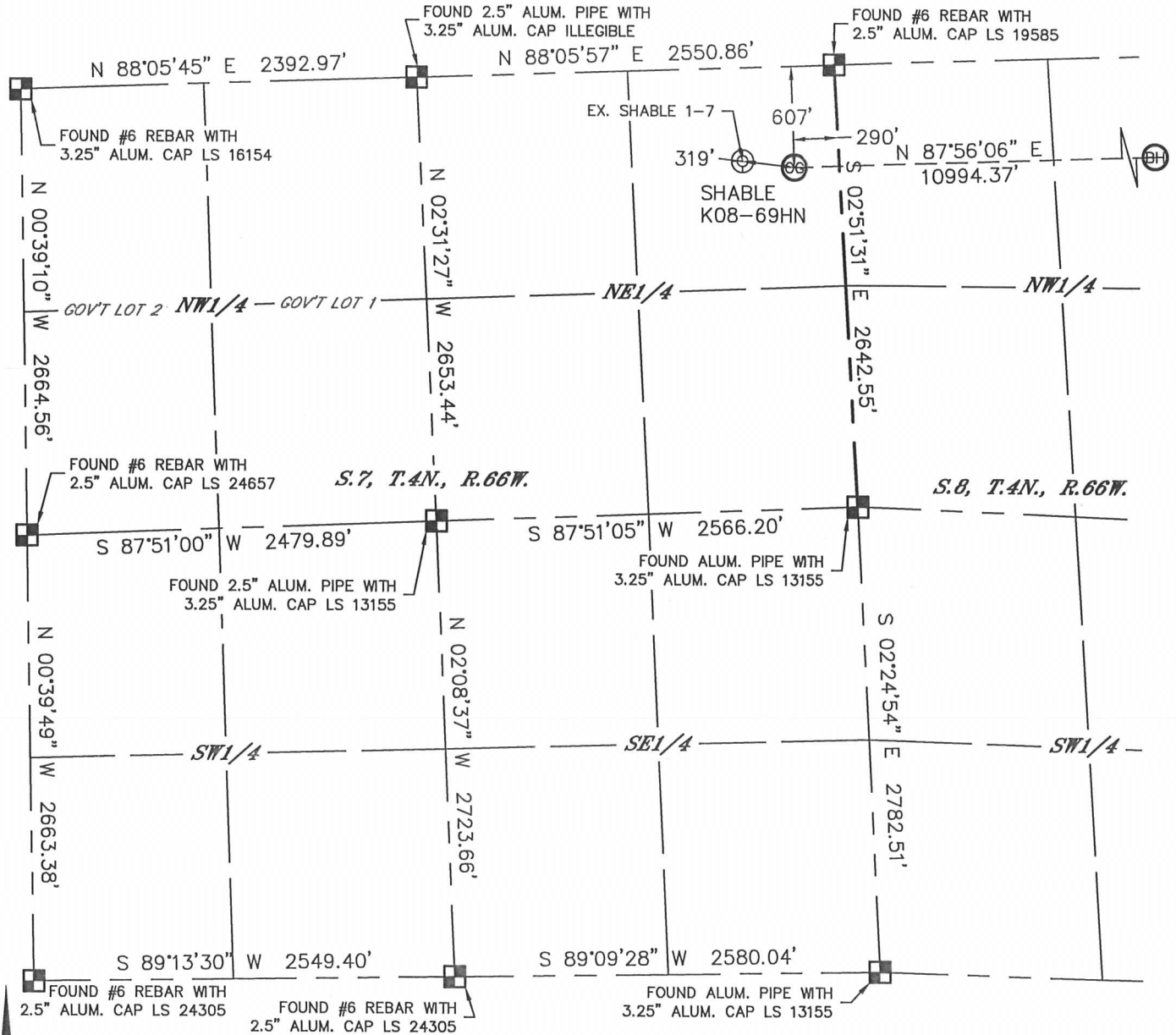


Lat40°, Inc. 1635 Foxtrail Drive, Suite 325 Loveland, CO 970-776-3321

WELL LOCATION CERTIFICATE

THIS MAP DOES NOT REPRESENT A BOUNDARY SURVEY

SECTION: 7
TOWNSHIP: 4N
RANGE: 66W



In accordance with a request from Cody Ball with Noble Energy Inc.

Lat40°, Inc. has determined the surface location of the SHABLE K08-69HN to be 607' from the NORTH line and 290' from the EAST line as measured at right angles from the section lines of Section 7, Township 4 North, Range 66 West, and the bottom hole to be 75' from the NORTH line and 75' from the EAST line as measured at right angles from the section lines of Section 9, Township 4 North, Range 66 West of the Sixth Principal Meridian, County of Weld, State of Colorado.

I hereby state that this Well Location Certificate was prepared by me, or under my direct supervision, that the fieldwork was completed on 5/17/2013, for and on behalf of Noble Energy Inc. That this is not a Land Survey Plat or an Improvement Survey Plat, and that it is not to be relied upon for establishment of fence, building, or other future improvement lines.

NOTE:

- 1) Bearings shown are Grid Bearings of the Colorado State Plane Coordinate System, North Zone, North American Datum 1983/2007. The lineal dimensions as contained herein are based upon the "U.S. Survey Foot."
 - 2) Ground elevations are based on an observed GPS elevation (NAVD 1988 DATUM).
 - 3) IMPROVEMENTS: See LOCATION DRAWING for all visible improvements within 500' of disturbed area.
 - 4) SURFACE USE: CROPLAND
 - 5) INSTRUMENT OPERATOR: WYATT HALL
 - 6) NEAREST EXISTING WELL: SHABLE 1-7, 319'
- NEAREST CULTURAL ITEMS:
BUILDING: 809' NW
BUILDING UNIT: 904' NW
HIGH OCCUPANCY BUILDING UNIT: 5280'+
DESIGNATED OUTSIDE ACTIVITY AREA: 5280'+
PUBLIC ROAD: 722' S (HWY 60)
ABOVEGROUND UTILITY: 682' S
RAILROAD: 1233' SE
PROPERTY LINE: 290' E

SURFACE LOCATION

LAT: 40.33248°N
LONG: 104.81301°W
PDOP: 1.1
ELEV: 4715'
1/4, 1/4: NE1/4NE1/4

BOTTOM HOLE

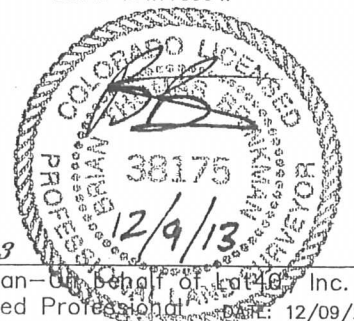
LAT: 40.33333°N
LONG: 104.77360°W

LEGEND

- = ALIQUOT MONUMENT AS DESCRIBED
○ = CALCULATED POSITION

SHEET 1 OF 3

Brian T. Brinkman—on behalf of Lat40°, Inc.
Colorado Licensed Professional Land Surveyor No. 38175
DATE: 12/09/2013
PROJECT#: 2013063



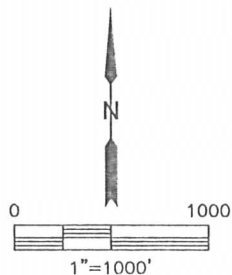
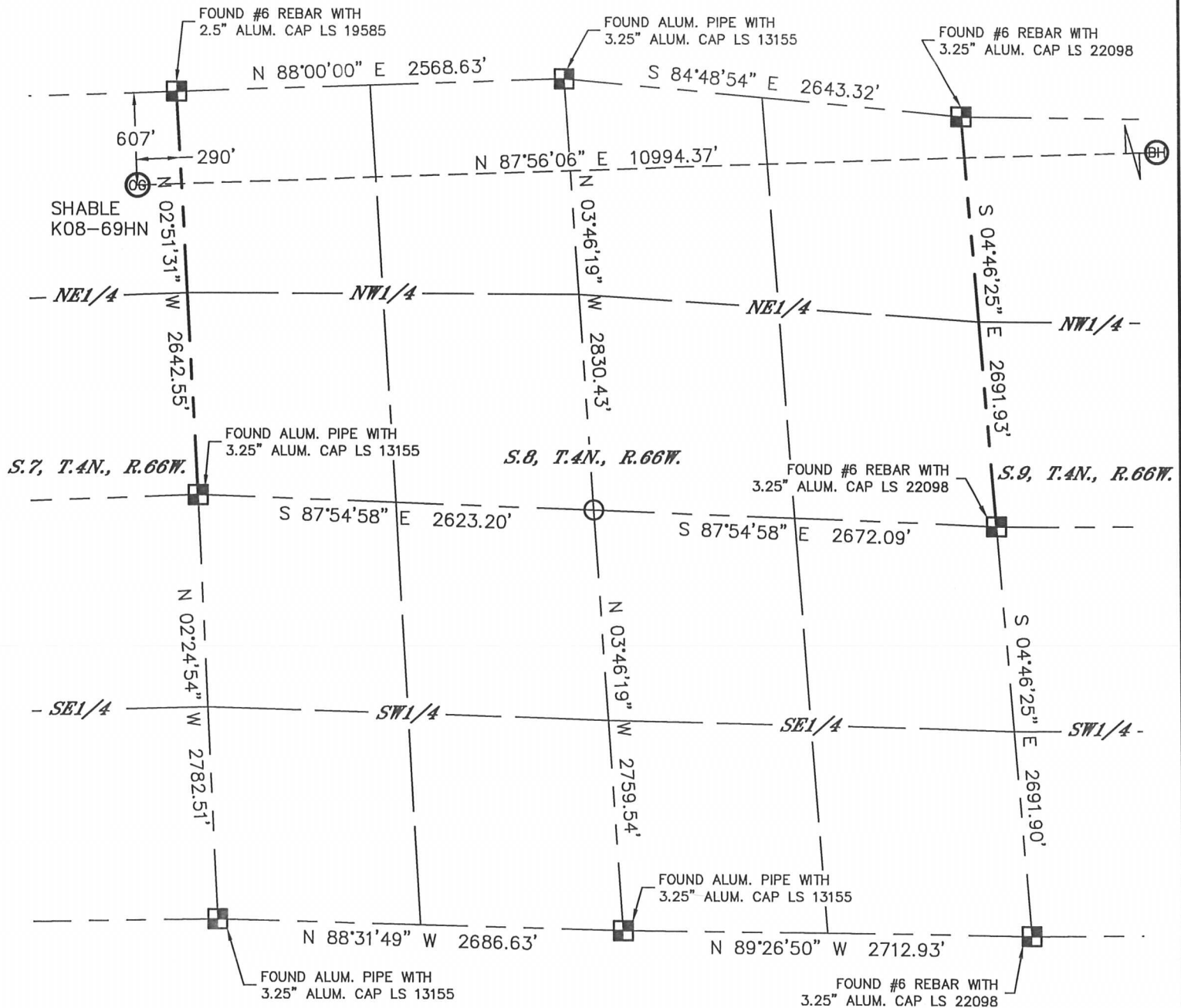


Lat40°, Inc. 1635 Foxtrail Drive, Suite 325 Loveland, CO 970-776-3321

WELL LOCATION CERTIFICATE

THIS MAP DOES NOT REPRESENT A BOUNDARY SURVEY

SECTION: 7
TOWNSHIP: 4N
RANGE: 66W



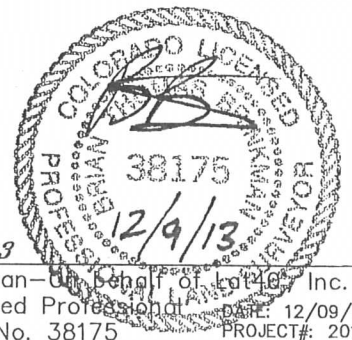
LEGEND

- = ALIQUOT MONUMENT AS DESCRIBED
- = CALCULATED POSITION

SHEET 2 OF 3

Brian T. Brinkman—On Behalf of Lat40°, Inc.

Colorado Licensed Professional Land Surveyor No. 38175
DATE: 12/09/2013
PROJECT#: 2013063



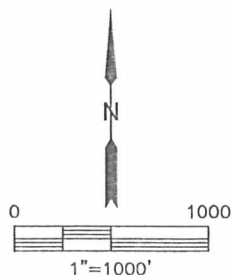
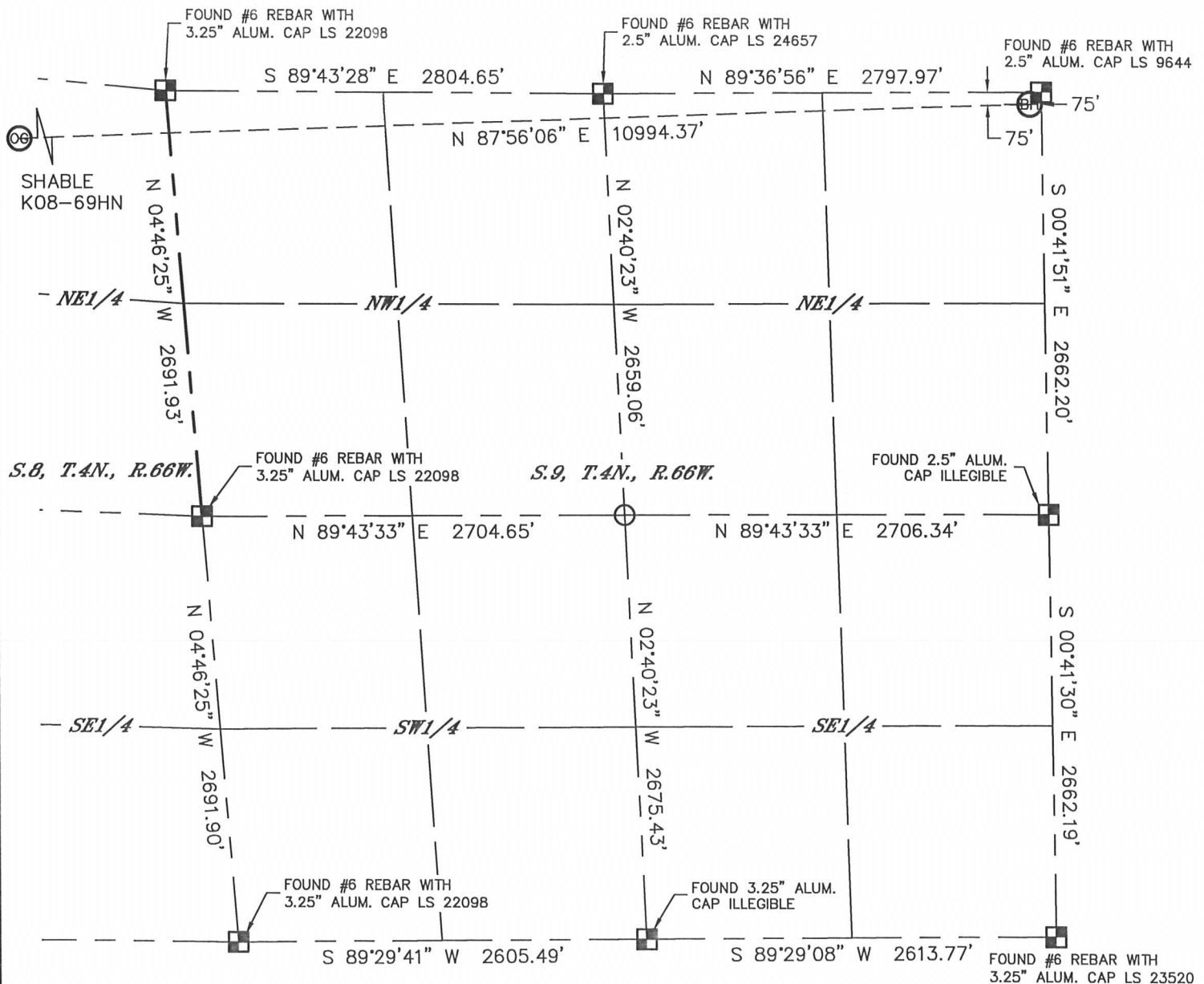


Lat40°, Inc. 1635 Foxtrail Drive, Suite 325 Loveland, CO 970-776-3321

WELL LOCATION CERTIFICATE

THIS MAP DOES NOT REPRESENT A BOUNDARY SURVEY

SECTION: 7
TOWNSHIP: 4N
RANGE: 66W

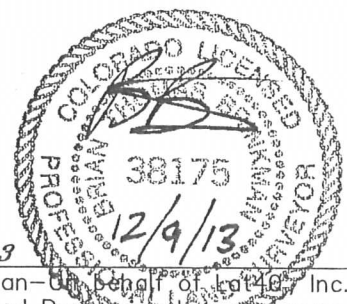


LEGEND

- = ALIQUOT MONUMENT AS DESCRIBED
- = CALCULATED POSITION

SHEET 3 OF 3

Brian T. Brinkman—On Behalf of Lat40°, Inc.
Colorado Licensed Professional Surveyor No. 38175
DATE: 12/09/2013
PROJECT#: 2013063



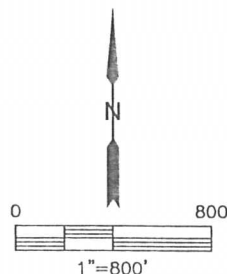
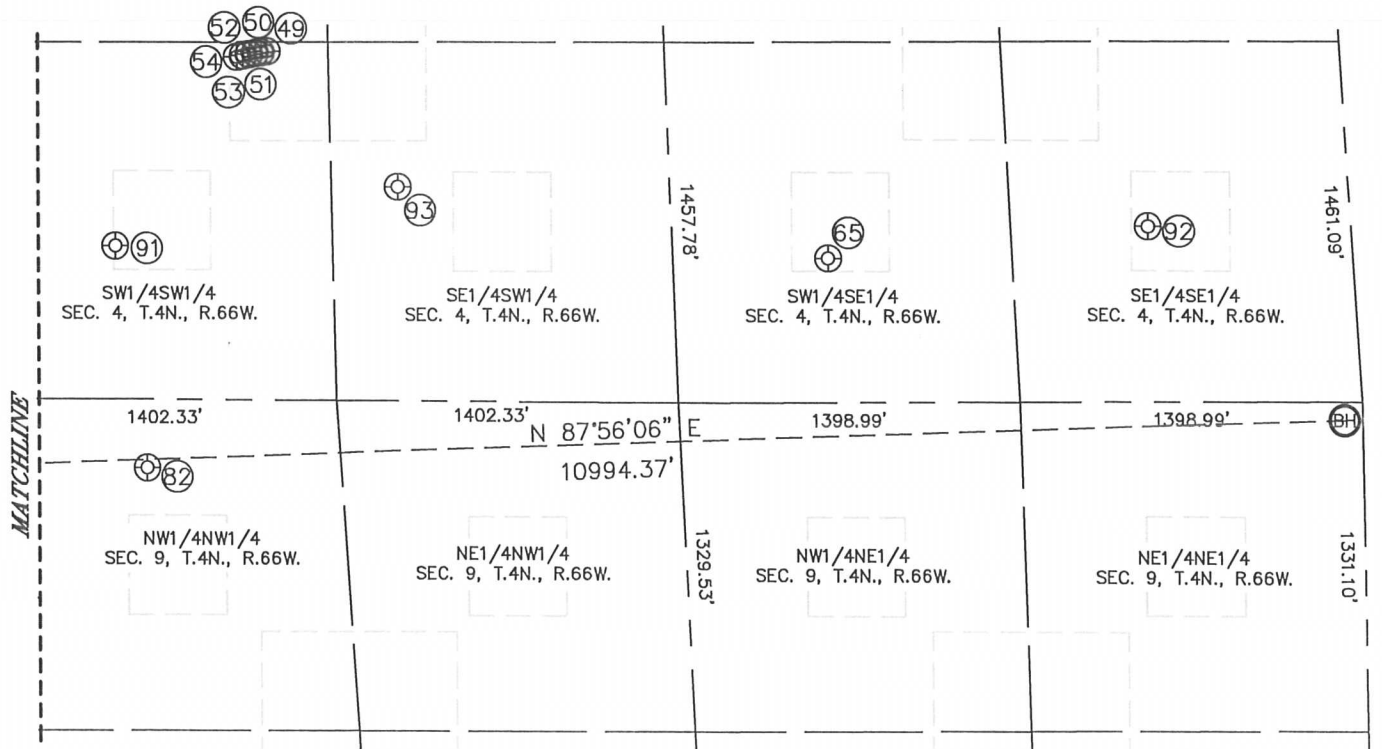
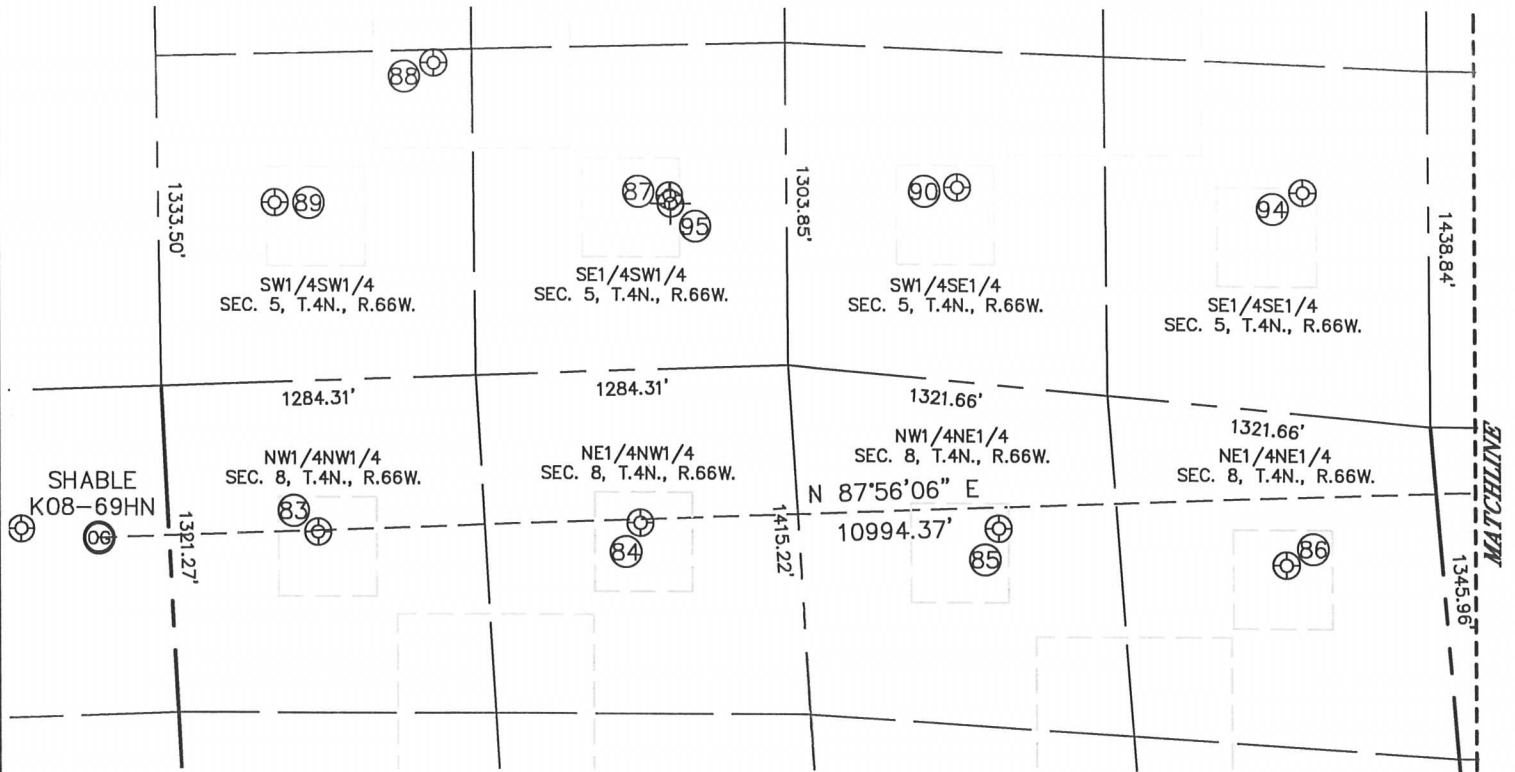


Lat40°, Inc. 1635 Foxtrail Drive, Suite 325 Loveland, CO 970-776-3321

SITE SKETCH

SHABLE K08-69HN

SECTION: 7
TOWNSHIP: 4N
RANGE: 66W





Lat40°, Inc. 1635 Foxtrail Drive, Suite 325 Loveland, CO 970-776-3321

SITE SKETCH

SHABLE K08-69HN

SECTION: 7
TOWNSHIP: 4N
RANGE: 66W

WELL NO.	WELL NAME	SHL FOOTAGE				SHL LAT°	SHL LONG°	PDOP	ELEV (FT.)	1/4/1/4
49	FIVE RIVERS K04-21D	1409	FSL	1131	FWL	40.33747	-104.78935	2.0	4695	SWSW
50	FIVE RIVERS K04-20D	1404	FSL	1107	FWL	40.33746	-104.78944	2.0	4695	SWSW
51	FIVE RIVERS K04-25	1402	FSL	1082	FWL	40.33745	-104.78953	2.4	4695	SWSW
52	FIVE RIVERS K04-32D	1396	FSL	1058	FWL	40.33744	-104.78962	2.4	4696	SWSW
53	FIVE RIVERS K09-29D	1391	FSL	1033	FWL	40.33743	-104.78971	2.4	4695	SWSW
54	FIVE RIVERS K09-30D	1386	FSL	1009	FWL	40.33741	-104.78979	2.4	4695	SWSW
65	RUMSEY-MONFORT 1-4	582	FSL	2142	FEL	40.33514	-104.78113	2.8	4693	SWSE
82	KEITH 1	277	FNL	602	FWL	40.33286	-104.79118	1.8	4693	NWNW
83	SHABLE R K 8-4	611	FNL	609	FWL	40.33254	-104.80978	2.0	4715	NWNW
84	SHABLE K 8-3	619	FNL	1926	FWL	40.33261	-104.80506	1.4	4714	NENW
85	KAMMERZELL 2-8	577	FNL	1794	FEL	40.33253	-104.79976	1.8	4698	NWNE
86	KAMMERZELL 1-8	614	FNL	634	FEL	40.33211	-104.79555	2.1	4698	NENE
87	DANIELS K 5-14 X	700	FSL	2090	FWL	40.33624	-104.80458	1.6	4699	SESW
88	DANIELS K 5-25	1267	FSL	1133	FWL	40.33773	-104.80803	1.8	4700	SWSW
89	DANIELS PM K 5-13	724	FSL	477	FWL	40.33619	-104.81037	1.5	4702	SWSW
90	KAMERZELL 1-5	780	FSL	1924	FEL	40.33632	-104.80031	1.5	4699	SWSE
91	KAMMERZELL 13-4	618	FSL	503	FWL	40.33532	-104.79161	1.4	4694	SWSW
92	RUMSEY-MONFORT 2-4	710	FSL	828	FEL	40.33549	-104.77644	5.0	4692	SESE
93	KAMMERZELL K 4-14	864	FSL	1660	FWL	40.33596	-104.78746	1.8	4691	SESW
94	KAMMERZELL 5-16	892	FSL	512	FEL	40.33624	-104.79525	1.5	4695	SESE
95	DANIELS 5-1416 (P&A)	666	FSL	2094	FWL	40.33568	104.80474	NA	4696	SESW

NOTE: THE ABANDONED WELL DATA SHOWN IN RED ABOVE WAS OBTAINED FROM COGCC SCOUT CARDS.