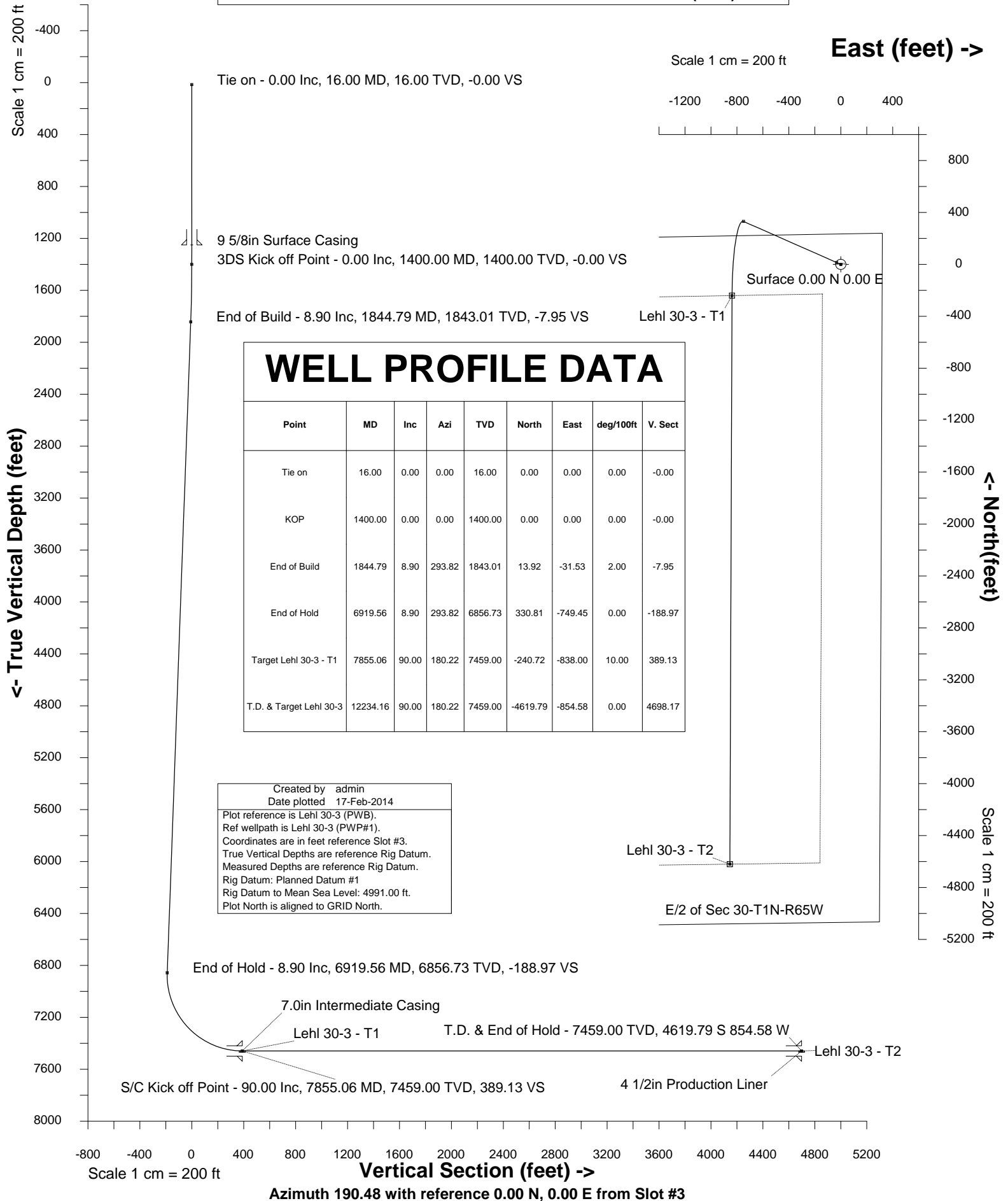


HRM Resources			
Location	Windsor	Slot	Slot #3
Field	WATTENBERG	Well	Lehl 30-3
Installation	Lehl Pad	Wellbore	Lehl 30-3 (PWB)

Slot	Slot #3
Well	Lehl 30-3
Wellbore	Lehl 30-3 (PWB)





INTEGRATED PETROLEUM TECHNOLOGIES, INC  
SYSDRILL  
Well Design Combined Report  
Wellbore: Lehl 30-3 (PWB)

Wellhead Details							
Name	Northing	Easting	Latitude	Longitude	North	East	Elevation Above Inst.
Slot #3	1254425.4348	3224478.1659	40.02900000	-104.69838000	0.30S	33.60W	1.00

Declination			
Date	Source	Time	
14-Feb-2014	IGRF Model [1900.0-2015.0]		11:31

Site Details				
Name	Northing	Easting	Coord System Name	North Alignment
Lehl Pad	1254425.7386	3224511.7687	CO83-NF on NORTH AMERICAN DATUM 1983 datum	Grid

Summary Wellpath									
MD[ft]	Inc[deg]	Azi[deg]	TVD[ft]	North[ft]	East[ft]	Dogleg [deg/100ft]	Vertical Section[ft]	Northing	Easting
16.00	0.00	0.000	16.00	0.00N	0.00E		0.00	1254425.43	3224478.17
1400.00	0.00	0.000	1400.00	0.00N	0.00E	==>	0.00	1254425.43	3224478.17
1844.79	8.90	293.820	1843.01	13.92N	31.53W	2.00	-7.95	1254439.35	3224446.64
6919.56	8.90	293.820	6856.73	330.81N	749.45W	==>	-188.97	1254756.23	3223728.74
7855.06	90.00	180.220	7459.00	240.72S	838.00W	10.00	389.13	1254184.73	3223640.20
12234.16	90.00	180.220	7459.00	4619.79S	854.58W	==>	4698.17	1249805.82	3223623.62

Interpolated Wellpath									
MD[ft]	Inc[deg]	Azi[deg]	TVD[ft]	North[ft]	East[ft]	Dogleg [deg/100ft]	Vertical Section[ft]	Northing	Easting
0.00	0.00	0.000	0.00	0.00N	0.00E		0.00	1254425.43	3224478.17
16.00	0.00	0.000	16.00	0.00N	0.00E	==>	0.00	1254425.43	3224478.17
100.00	0.00	0.000	100.00	0.00N	0.00E	==>	0.00	1254425.43	3224478.17
200.00	0.00	0.000	200.00	0.00N	0.00E	==>	0.00	1254425.43	3224478.17
300.00	0.00	0.000	300.00	0.00N	0.00E	==>	0.00	1254425.43	3224478.17
400.00	0.00	0.000	400.00	0.00N	0.00E	==>	0.00	1254425.43	3224478.17
500.00	0.00	0.000	500.00	0.00N	0.00E	==>	0.00	1254425.43	3224478.17
600.00	0.00	0.000	600.00	0.00N	0.00E	==>	0.00	1254425.43	3224478.17
700.00	0.00	0.000	700.00	0.00N	0.00E	==>	0.00	1254425.43	3224478.17
800.00	0.00	0.000	800.00	0.00N	0.00E	==>	0.00	1254425.43	3224478.17
900.00	0.00	0.000	900.00	0.00N	0.00E	==>	0.00	1254425.43	3224478.17
1000.00	0.00	0.000	1000.00	0.00N	0.00E	==>	0.00	1254425.43	3224478.17
1100.00	0.00	0.000	1100.00	0.00N	0.00E	==>	0.00	1254425.43	3224478.17
1200.00	0.00	0.000	1200.00	0.00N	0.00E	==>	0.00	1254425.43	3224478.17
1300.00	0.00	0.000	1300.00	0.00N	0.00E	==>	0.00	1254425.43	3224478.17
1384.00	0.00	0.000	1384.00	0.00N	0.00E	==>	0.00	1254425.43	3224478.17
1400.00	0.00	0.000	1400.00	0.00N	0.00E	==>	0.00	1254425.43	3224478.17
1484.00	1.68	293.820	1483.99	0.50N	1.13W	2.00	-0.28	1254425.93	3224477.04
1584.00	3.68	293.820	1583.87	2.39N	5.40W	2.00	-1.36	1254427.82	3224472.76
1684.00	5.68	293.820	1683.54	5.68N	12.87W	2.00	-3.24	1254431.11	3224465.30
1784.00	7.68	293.820	1782.85	10.38N	23.51W	2.00	-5.93	1254435.81	3224454.66
1844.79	8.90	293.820	1843.01	13.92N	31.53W	2.00	-7.95	1254439.35	3224446.64
1900.00	8.90	293.820	1897.55	17.36N	39.34W	==>	-9.92	1254442.80	3224438.83
2000.00	8.90	293.820	1996.35	23.61N	53.48W	==>	-13.49	1254449.04	3224424.69
2100.00	8.90	293.820	2095.15	29.85N	67.63W	==>	-17.05	1254455.29	3224410.54
2200.00	8.90	293.820	2193.94	36.10N	81.78W	==>	-20.62	1254461.53	3224396.39
2300.00	8.90	293.820	2292.74	42.34N	95.92W	==>	-24.19	1254467.77	3224382.25
2400.00	8.90	293.820	2391.54	48.59N	110.07W	==>	-27.75	1254474.02	3224368.10
2500.00	8.90	293.820	2490.33	54.83N	124.22W	==>	-31.32	1254480.26	3224353.95
2600.00	8.90	293.820	2589.13	61.07N	138.36W	==>	-34.89	1254486.51	3224339.81
2700.00	8.90	293.820	2687.93	67.32N	152.51W	==>	-38.45	1254492.75	3224325.66
2800.00	8.90	293.820	2786.72	73.56N	166.66W	==>	-42.02	1254499.00	3224311.51
2900.00	8.90	293.820	2885.52	79.81N	180.81W	==>	-45.59	1254505.24	3224297.37
3000.00	8.90	293.820	2984.32	86.05N	194.95W	==>	-49.16	1254511.48	3224283.22
3100.00	8.90	293.820	3083.12	92.30N	209.10W	==>	-52.72	1254517.73	3224269.07
3200.00	8.90	293.820	3181.91	98.54N	223.25W	==>	-56.29	1254523.97	3224254.93
3300.00	8.90	293.820	3280.71	104.79N	237.39W	==>	-59.86	1254530.22	3224240.78
3400.00	8.90	293.820	3379.51	111.03N	251.54W	==>	-63.42	1254536.46	3224226.63

All data is in Feet unless otherwise stated  
Coordinates are from Slot MD's are from Rig and TVD's are from Rig ( Planned Datum #1 4991.0ft above Mean Sea Level )  
Vertical Section is from 0.00N 0.00E on azimuth 190.480 degrees  
Bottom hole distance is 4698.17 Feet on azimuth 190.48 degrees from Wellhead  
Calculation method uses Minimum Curvature method  
Prepared by Integrated Petroleum Technologies, Inc.  
Date Printed: 17-Feb-2014



INTEGRATED PETROLEUM TECHNOLOGIES, INC  
SYSDRILL  
Well Design Combined Report  
Wellbore: Lehl 30-3 (PWB)

Interpolated Wellpath									
MD[ft]	Inc[deg]	Azi[deg]	TVD[ft]	North[ft]	East[ft]	Dogleg [deg/100ft]	Vertical Section[ft]	Northing	Easting
3500.00	8.90	293.820	3478.30	117.28N	265.69W	==>	-66.99	1254542.71	3224212.49
3600.00	8.90	293.820	3577.10	123.52N	279.83W	==>	-70.56	1254548.95	3224198.34
3700.00	8.90	293.820	3675.90	129.76N	293.98W	==>	-74.13	1254555.19	3224184.20
3800.00	8.90	293.820	3774.70	136.01N	308.13W	==>	-77.69	1254561.44	3224170.05
3900.00	8.90	293.820	3873.49	142.25N	322.28W	==>	-81.26	1254567.68	3224155.90
4000.00	8.90	293.820	3972.29	148.50N	336.42W	==>	-84.83	1254573.93	3224141.76
4100.00	8.90	293.820	4071.09	154.74N	350.57W	==>	-88.39	1254580.17	3224127.61
4200.00	8.90	293.820	4169.88	160.99N	364.72W	==>	-91.96	1254586.42	3224113.46
4300.00	8.90	293.820	4268.68	167.23N	378.86W	==>	-95.53	1254592.66	3224099.32
4400.00	8.90	293.820	4367.48	173.48N	393.01W	==>	-99.10	1254598.90	3224085.17
4500.00	8.90	293.820	4466.28	179.72N	407.16W	==>	-102.66	1254605.15	3224071.02
4600.00	8.90	293.820	4565.07	185.97N	421.30W	==>	-106.23	1254611.39	3224056.88
4700.00	8.90	293.820	4663.87	192.21N	435.45W	==>	-109.80	1254617.64	3224042.73
4800.00	8.90	293.820	4762.67	198.45N	449.60W	==>	-113.36	1254623.88	3224028.58
4900.00	8.90	293.820	4861.46	204.70N	463.75W	==>	-116.93	1254630.13	3224014.44
5000.00	8.90	293.820	4960.26	210.94N	477.89W	==>	-120.50	1254636.37	3224000.29
5100.00	8.90	293.820	5059.06	217.19N	492.04W	==>	-124.06	1254642.61	3223986.14
5200.00	8.90	293.820	5157.86	223.43N	506.19W	==>	-127.63	1254648.86	3223972.00
5300.00	8.90	293.820	5256.65	229.68N	520.33W	==>	-131.20	1254655.10	3223957.85
5400.00	8.90	293.820	5355.45	235.92N	534.48W	==>	-134.77	1254661.35	3223943.71
5500.00	8.90	293.820	5454.25	242.17N	548.63W	==>	-138.33	1254667.59	3223929.56
5600.00	8.90	293.820	5553.04	248.41N	562.77W	==>	-141.90	1254673.84	3223915.41
5700.00	8.90	293.820	5651.84	254.66N	576.92W	==>	-145.47	1254680.08	3223901.27
5800.00	8.90	293.820	5750.64	260.90N	591.07W	==>	-149.03	1254686.33	3223887.12
5900.00	8.90	293.820	5849.44	267.14N	605.22W	==>	-152.60	1254692.57	3223872.97
6000.00	8.90	293.820	5948.23	273.39N	619.36W	==>	-156.17	1254698.81	3223858.83
6100.00	8.90	293.820	6047.03	279.63N	633.51W	==>	-159.74	1254705.06	3223844.68
6200.00	8.90	293.820	6145.83	285.88N	647.66W	==>	-163.30	1254711.30	3223830.53
6300.00	8.90	293.820	6244.62	292.12N	661.80W	==>	-166.87	1254717.55	3223816.39
6400.00	8.90	293.820	6343.42	298.37N	675.95W	==>	-170.44	1254723.79	3223802.24
6500.00	8.90	293.820	6442.22	304.61N	690.10W	==>	-174.00	1254730.04	3223788.09
6600.00	8.90	293.820	6541.02	310.86N	704.24W	==>	-177.57	1254736.28	3223773.95
6700.00	8.90	293.820	6639.81	317.10N	718.39W	==>	-181.14	1254742.52	3223759.80
6800.00	8.90	293.820	6738.61	323.35N	732.54W	==>	-184.70	1254748.77	3223745.66
6900.00	8.90	293.820	6837.41	329.59N	746.69W	==>	-188.27	1254755.01	3223731.51
6919.56	8.90	293.820	6856.73	330.81N	749.45W	==>	-188.97	1254756.23	3223728.74
7000.00	9.31	241.250	6936.29	330.19N	760.87W	10.00	-186.28	1254755.61	3223717.33
7100.00	16.59	208.990	7033.80	313.77N	774.91W	10.00	-167.58	1254739.19	3223703.28
7200.00	25.74	197.530	7126.99	280.49N	788.41W	10.00	-132.41	1254705.92	3223689.79
7300.00	35.33	191.890	7213.04	231.37N	800.93W	10.00	-81.82	1254656.80	3223677.26
7400.00	45.08	188.440	7289.33	167.89N	812.12W	10.00	-17.37	1254593.32	3223666.08
7500.00	54.91	186.000	7353.54	91.99N	821.62W	10.00	58.99	1254517.42	3223656.58
7600.00	64.77	184.090	7403.73	5.97N	829.14W	10.00	144.95	1254431.40	3223649.06
7700.00	74.66	182.470	7438.36	87.56S	834.46W	10.00	237.88	1254337.88	3223643.74
7800.00	84.55	181.000	7456.38	185.74S	837.42W	10.00	334.97	1254239.70	3223640.78
7855.06	90.00	180.220	7459.00	240.72S	838.00W	10.00	389.13	1254184.73	3223640.20
7900.00	90.00	180.220	7459.00	285.66S	838.17W	==>	433.35	1254139.79	3223640.03
8000.00	90.00	180.220	7459.00	385.66S	838.55W	==>	531.75	1254039.79	3223639.65
8100.00	90.00	180.220	7459.00	485.66S	838.93W	==>	630.15	1253939.80	3223639.27
8200.00	90.00	180.220	7459.00	585.66S	839.31W	==>	728.55	1253839.80	3223638.89
8300.00	90.00	180.220	7459.00	685.66S	839.69W	==>	826.95	1253739.81	3223638.51
8400.00	90.00	180.220	7459.00	785.65S	840.06W	==>	925.35	1253639.81	3223638.13
8500.00	90.00	180.220	7459.00	885.65S	840.44W	==>	1023.75	1253539.81	3223637.75
8600.00	90.00	180.220	7459.00	985.65S	840.82W	==>	1122.15	1253439.82	3223637.38
8700.00	90.00	180.220	7459.00	1085.65S	841.20W	==>	1220.55	1253339.82	3223637.00
8800.00	90.00	180.220	7459.00	1185.65S	841.58W	==>	1318.95	1253239.83	3223636.62
8900.00	90.00	180.220	7459.00	1285.65S	841.96W	==>	1417.35	1253139.83	3223636.24
9000.00	90.00	180.220	7459.00	1385.65S	842.34W	==>	1515.75	1253039.84	3223635.86
9100.00	90.00	180.220	7459.00	1485.65S	842.72W	==>	1614.15	1252939.84	3223635.48
9200.00	90.00	180.220	7459.00	1585.65S	843.09W	==>	1712.55	1252839.85	3223635.10
9300.00	90.00	180.220	7459.00	1685.65S	843.47W	==>	1810.95	1252739.85	3223634.73

All data is in Feet unless otherwise stated  
Coordinates are from Slot MD's are from Rig and TVD's are from Rig ( Planned Datum #1 4991.0ft above Mean Sea Level )  
Vertical Section is from 0.00N 0.00E on azimuth 190.480 degrees  
Bottom hole distance is 4698.17 Feet on azimuth 190.48 degrees from Wellhead  
Calculation method uses Minimum Curvature method  
Prepared by Integrated Petroleum Technologies, Inc.  
Date Printed: 17-Feb-2014



INTEGRATED PETROLEUM TECHNOLOGIES, INC  
SYSDRILL  
Well Design Combined Report  
Wellbore: Lehl 30-3 (PWB)

Interpolated Wellpath									
MD[ft]	Inc[deg]	Azi[deg]	TVD[ft]	North[ft]	East[ft]	Dogleg [deg/100ft]	Vertical Section[ft]	Northing	Easting
9400.00	90.00	180.220	7459.00	1785.65S	843.85W	==>	1909.35	1252639.85	3223634.35
9500.00	90.00	180.220	7459.00	1885.65S	844.23W	==>	2007.75	1252539.86	3223633.97
9600.00	90.00	180.220	7459.00	1985.65S	844.61W	==>	2106.15	1252439.86	3223633.59
9700.00	90.00	180.220	7459.00	2085.65S	844.99W	==>	2204.55	1252339.87	3223633.21
9800.00	90.00	180.220	7459.00	2185.64S	845.37W	==>	2302.95	1252239.87	3223632.83
9900.00	90.00	180.220	7459.00	2285.64S	845.74W	==>	2401.35	1252139.88	3223632.45
10000.00	90.00	180.220	7459.00	2385.64S	846.12W	==>	2499.75	1252039.88	3223632.07
10100.00	90.00	180.220	7459.00	2485.64S	846.50W	==>	2598.15	1251939.89	3223631.70
10200.00	90.00	180.220	7459.00	2585.64S	846.88W	==>	2696.55	1251839.89	3223631.32
10300.00	90.00	180.220	7459.00	2685.64S	847.26W	==>	2794.95	1251739.90	3223630.94
10400.00	90.00	180.220	7459.00	2785.64S	847.64W	==>	2893.35	1251639.90	3223630.56
10500.00	90.00	180.220	7459.00	2885.64S	848.02W	==>	2991.75	1251539.90	3223630.18
10600.00	90.00	180.220	7459.00	2985.64S	848.40W	==>	3090.15	1251439.91	3223629.80
10700.00	90.00	180.220	7459.00	3085.64S	848.77W	==>	3188.55	1251339.91	3223629.42
10800.00	90.00	180.220	7459.00	3185.64S	849.15W	==>	3286.95	1251239.92	3223629.05
10900.00	90.00	180.220	7459.00	3285.64S	849.53W	==>	3385.35	1251139.92	3223628.67
11000.00	90.00	180.220	7459.00	3385.64S	849.91W	==>	3483.75	1251039.93	3223628.29
11100.00	90.00	180.220	7459.00	3485.64S	850.29W	==>	3582.15	1250939.93	3223627.91
11200.00	90.00	180.220	7459.00	3585.63S	850.67W	==>	3680.55	1250839.94	3223627.53
11300.00	90.00	180.220	7459.00	3685.63S	851.05W	==>	3778.95	1250739.94	3223627.15
11400.00	90.00	180.220	7459.00	3785.63S	851.42W	==>	3877.35	1250639.94	3223626.77
11500.00	90.00	180.220	7459.00	3885.63S	851.80W	==>	3975.75	1250539.95	3223626.39
11600.00	90.00	180.220	7459.00	3985.63S	852.18W	==>	4074.15	1250439.95	3223626.02
11700.00	90.00	180.220	7459.00	4085.63S	852.56W	==>	4172.55	1250339.96	3223625.64
11800.00	90.00	180.220	7459.00	4185.63S	852.94W	==>	4270.95	1250239.96	3223625.26
11900.00	90.00	180.220	7459.00	4285.63S	853.32W	==>	4369.35	1250139.97	3223624.88
12000.00	90.00	180.220	7459.00	4385.63S	853.70W	==>	4467.75	1250039.97	3223624.50
12100.00	90.00	180.220	7459.00	4485.63S	854.08W	==>	4566.15	1249939.98	3223624.12
12200.00	90.00	180.220	7459.00	4585.63S	854.45W	==>	4664.55	1249839.98	3223623.74
12234.16	90.00	180.220	7459.00	4619.79S	854.58W	==>	4698.17	1249805.82	3223623.62

All data is in Feet unless otherwise stated  
Coordinates are from Slot MD's are from Rig and TVD's are from Rig ( Planned Datum #1 4991.0ft above Mean Sea Level )  
Vertical Section is from 0.00N 0.00E on azimuth 190.480 degrees  
Bottom hole distance is 4698.17 Feet on azimuth 190.48 degrees from Wellhead  
Calculation method uses Minimum Curvature method  
Prepared by Integrated Petroleum Technologies, Inc.  
Date Printed: 17-Feb-2014



INTEGRATED PETROLEUM TECHNOLOGIES, INC  
SYSDRILL  
Well Design Combined Report  
Wellbore: Lehl 30-3 (PWB)

Hole Sections								
Diameter [in]	Start MD[ft]	Start TVD[ft]	Start North[ft]	Start East[ft]	End MD[ft]	End TVD[ft]	End North[ft]	End East[ft]
13 1/2	16.00	16.00	0.00N	0.00E	1250.00	1250.00	0.00N	0.00E
8 3/4	1250.00	1250.00	0.00N	0.00E	7855.00	7459.00	240.66S	838.00W
6 1/8	7855.00	7459.00	240.66S	838.00W	12234.00	7459.00	4619.63S	854.58W

Casings								
Name	Top MD[ft]	Top TVD[ft]	Top North[ft]	Top East[ft]	Shoe MD[ft]	Shoe TVD[ft]	Shoe North[ft]	Shoe East[ft]
9 5/8in Surface Casing	16.00	16.00	0.00N	0.00E	1250.00	1250.00	0.00N	0.00E
7.0in Intermediate Casing	16.00	16.00	0.00N	0.00E	7855.00	7459.00	240.66S	838.00W
4 1/2in Production Liner	7655.00	7424.78	44.72S	832.35W	12234.00	7459.00	4619.63S	854.58W

Targets								
Name	North[ft]	East[ft]	TVD[ft]	Latitude	Longitude	Northing	Easting	Last Revised
Lehl 30-3 - T1	240.72S	838.00W	7459.00	40.02836000	-104.70138000	1254184.73	3223640.20	
Lehl 30-3 - T2	4619.79S	854.58W	7459.00	40.01634000	-104.70158000	1249805.82	3223623.62	

Survey Tool Program								
Reference	Survey Name	MD[ft]	TVD[ft]	Survey Tool	Error Model			
156027	Planned	12234.16	7459.00	WdW Rate Gyro	Standard			

Notes



SYSDRILL  
Closest Approach + Clearance Factor Summary Report  
Wellbore: Lehl 30-3 (PWB)

Ellipse separations are reported ONLY if BOTH wells have uncertainty data  
Only Depth and Magnetic Reference Field error terms are correlated across tie points  
Proximities beyond 2500.00ft with expansion rate of 0.00ft/1000ft are not reported  
Scan limit is calculated on CENTRE to CENTRE distance

Summary data uses Closest Approach clearance calculation for all minima  
Hole size/Casings ARE included  
Hole size/Casings are NOT subtracted from Centre-Centre distance  
Confidence limit of 95.00% / 2.80 SD.

Wellbore		
Name	Created	Last Revised
Lehl 30-3 (PWB)	14-Feb-2014	17-Feb-2014

Well		
Name	Government ID	Last Revised
Lehl 30-3		14-Feb-2014

Slot						
Name	Grid Northing	Grid Easting	Latitude	Longitude	North	East
Slot #3	1254425.4348	3224478.1659	40.02900000	-104.69838000	0.30S	33.60W

Installation				
Name	Easting	Northing	Coord System Name	North Alignment
Lehl Pad	3224511.7687	1254425.7386	CO83-NF on NORTH AMERICAN DATUM 1983 datum	Grid

Field				
Name	Easting	Northing	Coord System Name	North Alignment
WATTENBERG	3217412.9943	1407601.8800	CO83-NF on NORTH AMERICAN DATUM 1983 datum	Grid

Clearance Summary										
Offset WellName	Offset Wellbore	Offset Slot	Offset Structure	Separation [ft]	MD[ft]	Diverging From[ft]	Ellipse Separation [ft]	Ellipse MD[ft]	Clearance Factor	Clearance MD[ft]
Lehl 30-4	Lehl 30-4 (PWB)	Slot #4	Lehl Pad	14.47	1349.00	7890.02	11.52	1246.31	4.91	1246.31
Lehl 30-2	Lehl 30-2 (PWB)	Slot #2	Lehl Pad	16.80	1400.00	1400.00	13.86	1246.31	5.70	1246.31
Lehl 30-5	Lehl 30-5 (PWB)	Slot #5	Lehl Pad	31.02	1298.00	1298.00	28.07	1246.31	7.83	12220.72
Lehl 30-1	Lehl 30-1 (PWB)	Slot #1	Lehl Pad	33.61	1400.00	1400.00	30.66	1246.31	7.81	12220.72
Lehl 30-6	Lehl 30-6 (PWB)	Slot #6	Lehl Pad	47.75	1247.00	7874.90	44.80	1247.00	13.36	12220.72
MARGUERITE B LEHL #A-1	MARGUERITE B LEHL #A-1 (AWB)	Slot #7	Offsets	814.42	9284.37	9284.37	772.70	9300.78	18.87	9464.82
M B LEHL A #1	M B LEHL A #1 (AWB)	Slot #6	Offsets	853.13	9389.17	9389.17	804.74	9399.20	17.15	9563.24
ELLS #XX 19-4D	ELLS #XX 19-4D (AWB)	Slot #2	Offsets	898.03	6954.98	6954.98	864.96	6954.98	27.10	7004.19
CHARLES M BROWN GAS UNIT #1	CHARLES M BROWN GAS UNIT #1 (AWB)	Slot #3	Offsets	1889.60	1400.00	1400.00	1877.39	1426.76	73.99	7016.00
KILKER #1	KILKER #1 (AWB)	Slot #4	Offsets	2133.90	11664.31	11664.31	2072.20	11679.39	34.23	11909.04
GILMORE #1-30	GILMORE #1-30	Slot #8	Offsets	2294.88	8584.17	8584.17	2258.60	8611.80	55.06	9628.86

All data is in Feet unless otherwise stated  
Coordinates are from Slot MD's are from Rig and TVD's are from Rig ( Planned Datum #1 4991.0ft above Mean Sea Level )  
Vertical Section is from 0.00N 0.00E on azimuth 190.480 degrees  
Prepared by Integrated Petroleum Technologies, Inc.  
Date Printed: 17-Feb-2014



SYSDRILL  
Closest Approach + Clearance Factor Summary Report  
Wellbore: Lehl 30-3 (PWB)

Clearance Summary										
Offset WellName	Offset Wellbore	Offset Slot	Offset Structure	Separation [ft]	MD[ft]	Diverging From[ft]	Ellipse Separation [ft]	Ellipse MD[ft]	Clearance Factor	Clearance MD[ft]
(AWB)										