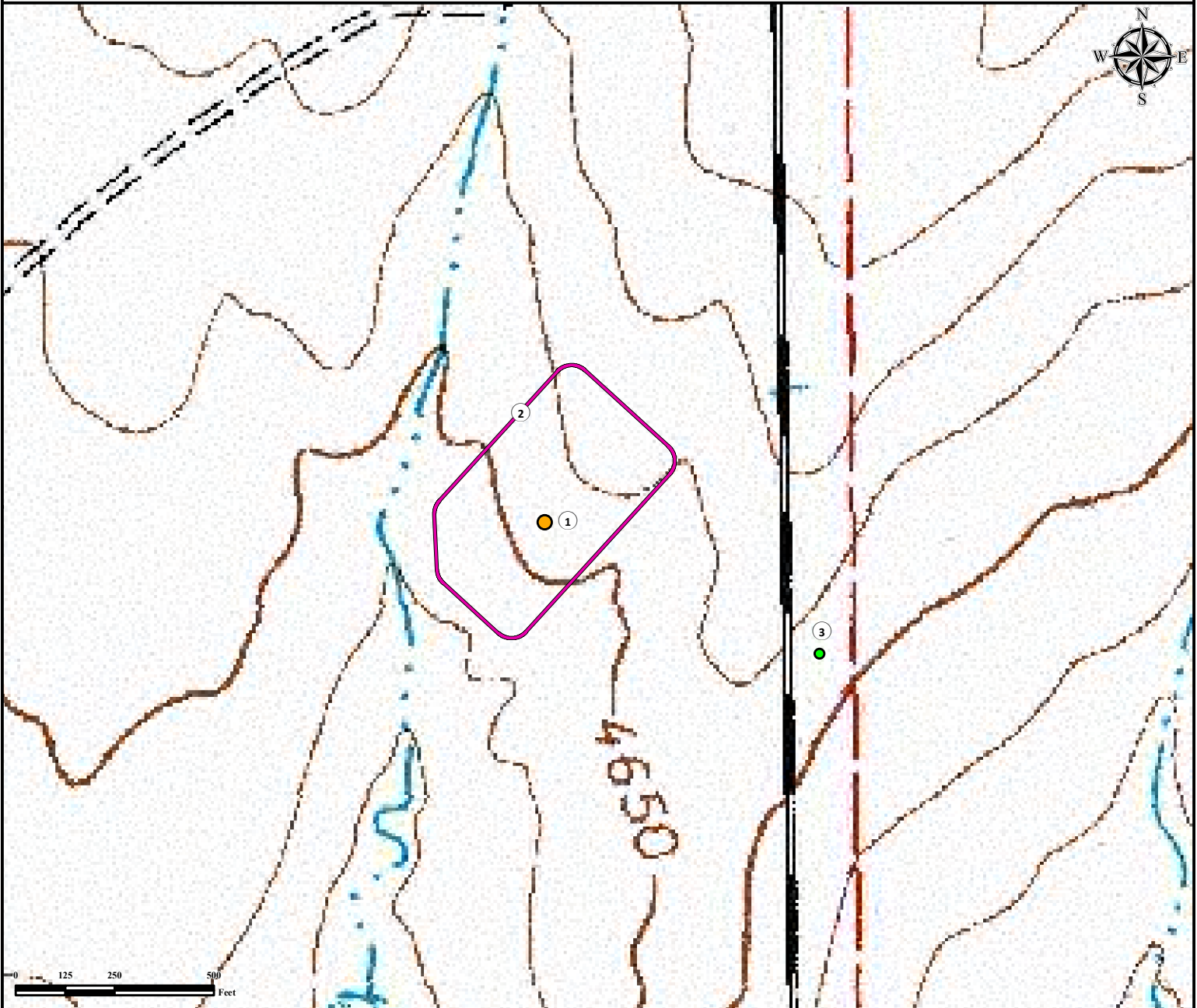


Reference Area Map

HARMON 42-6-17-53

SE¼ NE¼ SECTION 6, TOWNSHIP 17 SOUTH, RANGE 53 WEST OF THE 6TH PRINCIPAL MERIDIAN



1. Proposed Well HARMON 42-6-17-53.
2. Operational Disturbance Area.
3. Reference Photo Point.

Legend

- Proposed Well
- Reference Photo Point
- Disturbance Area

Reference Location

** Reference Photo Point **

Lat: 38.603278° Long: -103.375202° (NAD83)
Elevation: 4655 Feet

Surface Use: Rangeland



Use our resources to find yours!
www.petro-fs.com
(303) 928-7128

Field Date: 03/25/2014
Drafting Date: 04/18/2014
Drafted by: CSG
Checked by: MLP
Revision:

Data Sources:
- Topo courtesy of USGS

Prepared for: **PIONEER NATURAL RESOURCES USA INC.**