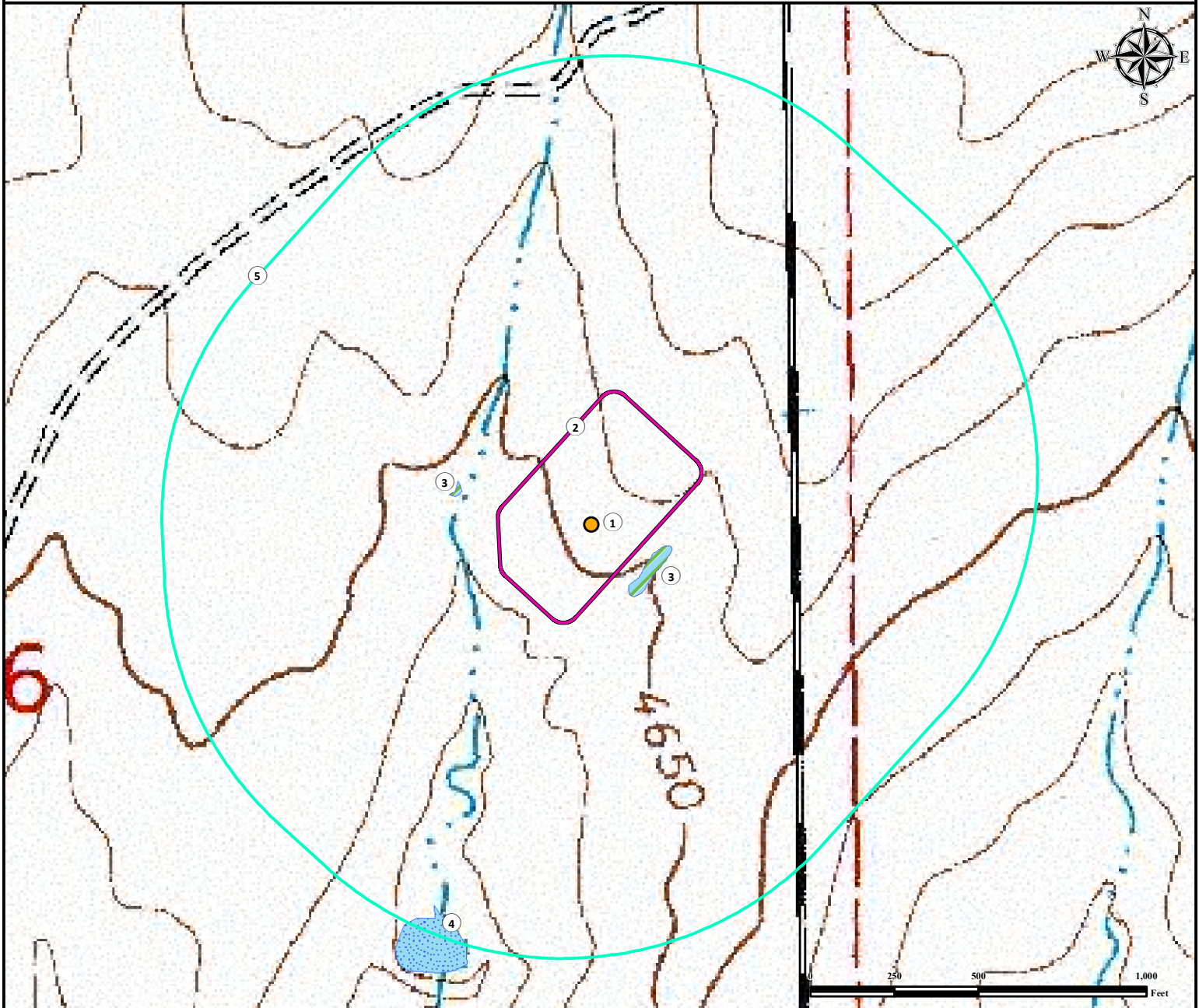


# Hydrology Map






## HARMON 42-6-17-53

SE¼ NE¼ SECTION 6, TOWNSHIP 17 SOUTH, RANGE 53 WEST OF THE 6TH PRINCIPAL MERIDIAN



1. Proposed Well HARMON 42-6-17-53.
2. Operational Disturbance Area.
3. Wetlands are  $\pm 198'$  SE, and  $\pm 399'$  NW.
4. Pond is  $\pm 1224'$  SW.
5. 1000' Radius.

### Legend

- |   |   |
|---|---|
|  Proposed Well    |  Pond    |
|  1000' Radius     |  Wetland |
|  Disturbance Area |   |

### Reference Location

\*\* Reference Well  
HARMON 42-6-17-53 \*\*

Lat: 38.604222° Long: -103.377606° (NAD83)  
Elevation: 4655 Feet



Use our resources to find yours!  
[www.petro-fs.com](http://www.petro-fs.com)  
(303) 928-7128

Field Date: 03/25/2014  
Drafting Date: 04/18/2014  
Drafted by: CSG  
Checked by: MLP  
Revision:

Data Sources:  
- Topo courtesy USGS  
- Water features courtesy of NHD

Prepared for: **PIONEER NATURAL  
RESOURCES USA INC.**