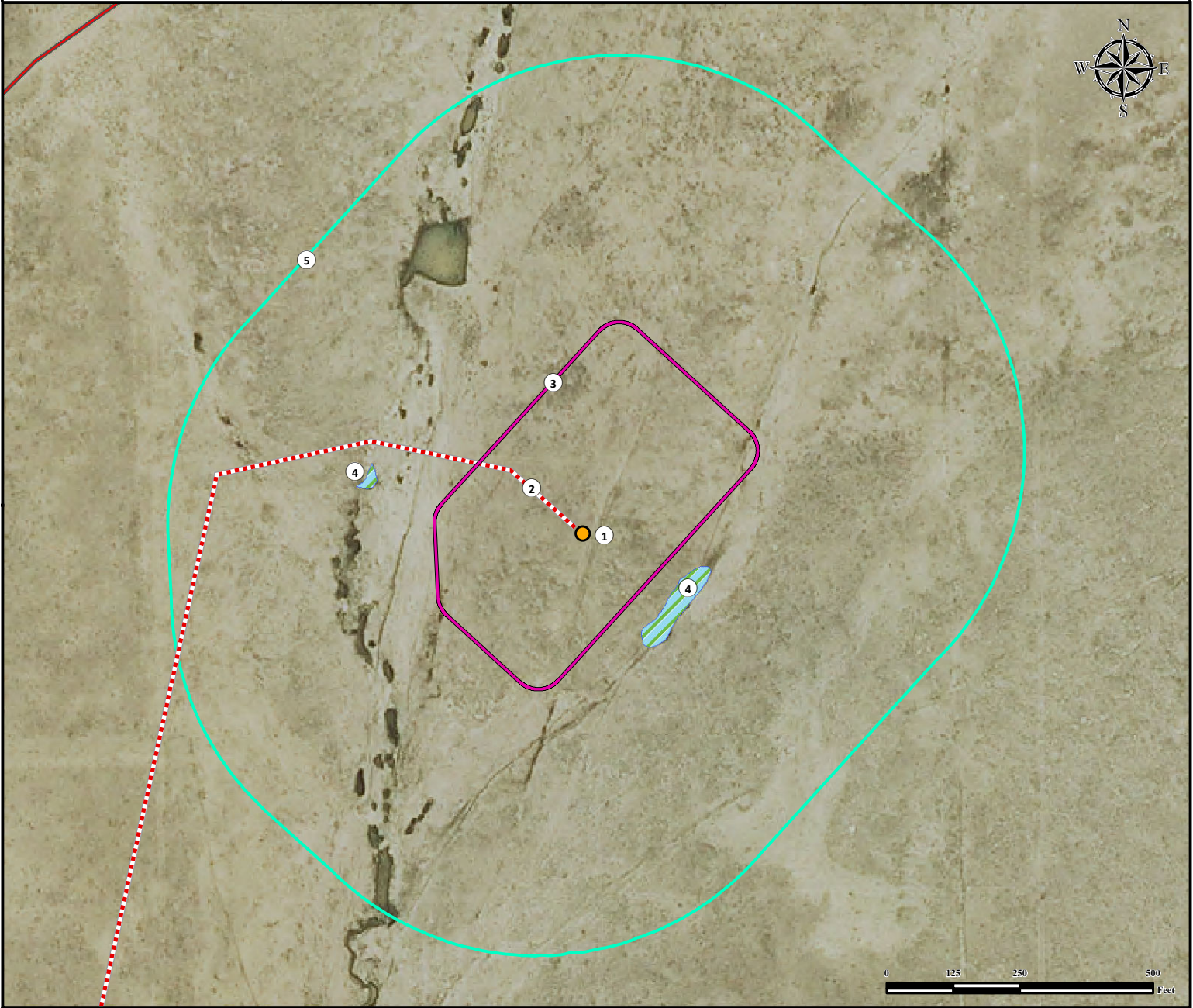


Location Drawing







HARMON 42-6-17-53

SE¼ NE¼ SECTION 6, TOWNSHIP 17 SOUTH, RANGE 53 WEST OF THE 6TH PRINCIPAL MERIDIAN



1. Proposed Well HARMON 42-6-17-53.
2. Proposed Access Road.
3. Operational Disturbance Area.
4. Wetlands are ±198' SE, and ±399' NW.
5. 500' Radius.

Legend

- | | |
|---|--|
|  Proposed Well |  Disturbance Area |
|  Private Road |  500' Radius |
|  Proposed Access Road |  Wetlands |

Measured from Nearest Well or Facility Edge

Building -	>5280' SW
Building Unit -	>5280' SW

Measured from Reference Location

Public Road - (CR F)	±3012' S
Prop. Line (Franklin, William)	±3012' S
Utility (Power Line) -	>5280' SW
Surface Water (Wetland) -	±198' SE
Railroad -	>5280' SE


Reference Location

** HARMON 42-6-17-53 **
 Lat: 38.604222° Long: -103.377606° (NAD83)
 Elevation: 4655 Feet

Disturbance Acreage:

5.39 Acres Drilling Operations
 2.69 Acres Interim Reclaim

Current Surface Use: Rangeland
 Future Surface Use: Rangeland

 Use our resources to find yours!
www.petro-fs.com
 (303) 928-7128

Field Date: 03/25/2014
 Drafting Date: 04/18/2014
 Drafted by: CSG
 Checked by: MLP
 Revision:

Data Sources:
 - Aerial courtesy of NAIP (2013)

Water Well - ±8590' SE	SWL = 0'
Permit: 239763,	Receipt: 0487342
Water Well - ±11,689' NE	SWL = 26'
Permit: 254057,	Receipt: 0517382

Prepared for: **PIONEER NATURAL RESOURCES USA INC.**