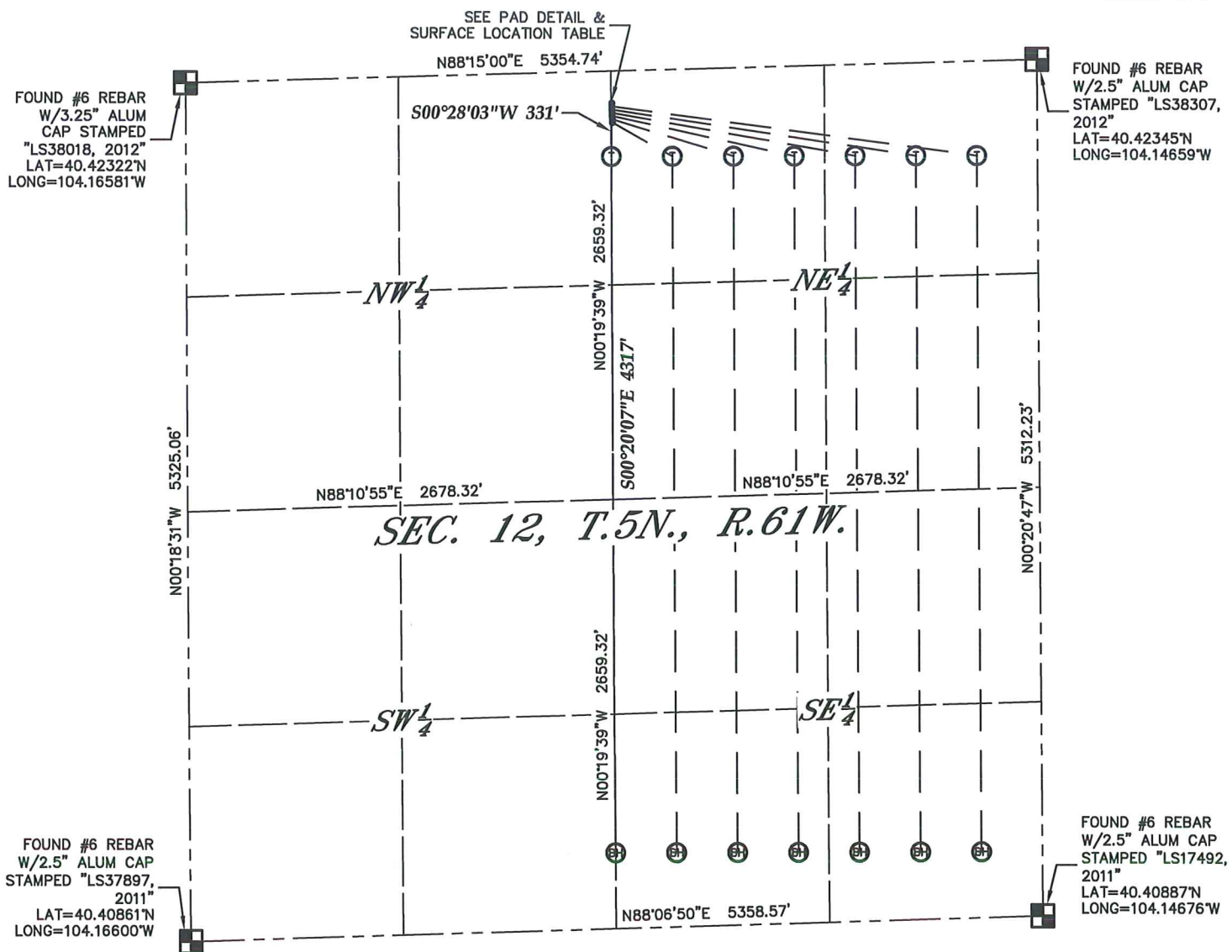


MULTI-WELL PLAN (1 of 2)

PRONGHORN K-12 PAD

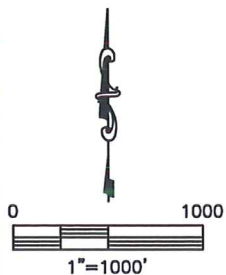
SECTION: 12
TOWNSHIP: 5N
RANGE: 61W



- OG PRONGHORN K-O-12HNC
- 20'
- OG PRONGHORN PH1-12
- 20'
- OG PRONGHORN PH2-12
- 20'
- OG PRONGHORN PH3-12
- 120'
- OG PRONGHORN PH4-12
- 120'
- OG PRONGHORN PH5-12
- 20'
- OG PRONGHORN PH6-12

TO TARGET 1

PAD DETAIL
N.T.S.



MULTI-WELL PLAN (2 of 2)

PRONGHORN K-12 PAD

SECTION: 12
TOWNSHIP: 5N
RANGE: 61W

SURFACE LOCATIONS

(NORTH TO SOUTH)

PRONGHORN K-O-12HNC
200' FNL
2681' FWL
LAT=40.42279°N
LONG=104.15619°W

PRONGHORN PH1-12
220' FNL
2682' FWL
LAT=40.42273°N
LONG=104.15619°W

PRONGHORN PH2-12
240' FNL
2683' FWL
LAT=40.42268°N
LONG=104.15619°W

PRONGHORN PH3-12
260' FNL
2683' FWL
LAT=40.42262°N
LONG=104.15619°W

PRONGHORN PH4-12
280' FNL
2684' FWL
LAT=40.42257°N
LONG=104.15619°W

PRONGHORN PH5-12
300' FNL
2684' FWL
LAT=40.42251°N
LONG=104.15618°W

PRONGHORN PH6-12
320' FNL
2685' FWL
LAT=40.42246°N
LONG=104.15618°W

TARGET 1 LOCATIONS

(WEST TO EAST)

PRONGHORN K-O-12HNC
531' FNL
2677' FWL
LAT=40.42188°N
LONG=104.15622°W

BOTTOM HOLE LOCATIONS

(WEST TO EAST)

PRONGHORN K-O-12HNC
470' FSL
2679' FWL
LAT=40.41003°N
LONG=104.15636°W