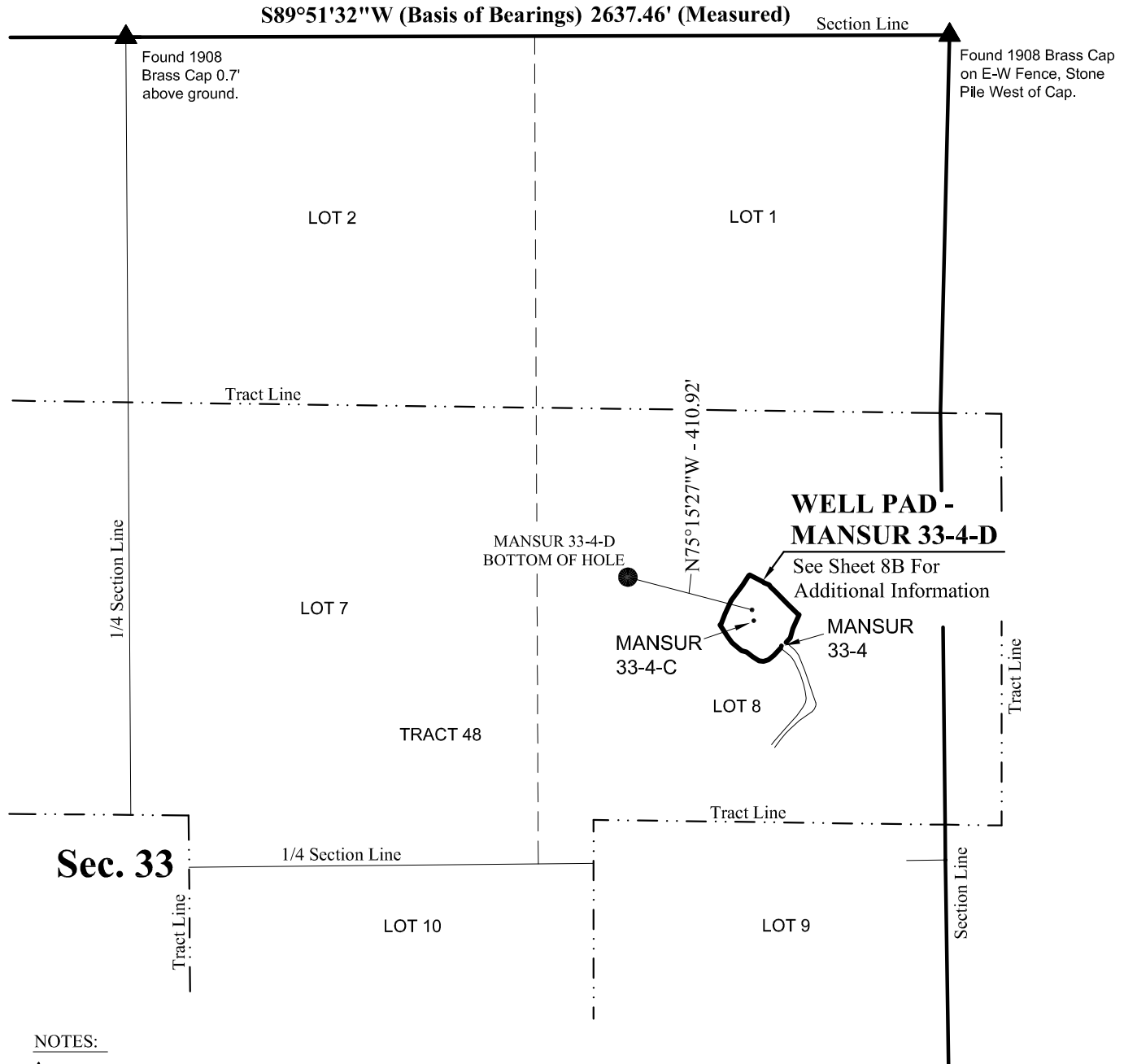
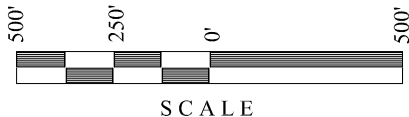


# T12S, R97W, 6th P.M.



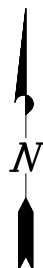
## NOTES:

- ▲ = Section Corners Located
1. Bearings are based on Global Positioning Satellite observations.



## FRAM OPERATING, LLC WELL BORE TRAJECTORY

**MANSUR 33-4-D  
LOCATED IN SECTION 33, T12S, R97W,  
6th P.M., MESA COUNTY, COLORADO.**



## TIMBERLINE

(435) 789-1365

**ENGINEERING & LAND SURVEYING, INC.**

209 NORTH 300 WEST - VERNAL, UTAH 84078

DATE SURVEYED:  
3-28-14

SURVEYED BY: A.F.

DATE DRAWN:  
4-1-14

DRAWN BY: M.W.W.

SCALE: 1" = 500'

Date Last Revised:

SHEET

**8A**

OF 14

WELL NAME	SURFACE POSITION					BOTTOM HOLE				
	NAD83		NAD27		FOOTAGES	NAD83		NAD27		FOOTAGES
	LATITUDE	LONGITUDE	LATITUDE	LONGITUDE		LATITUDE	LONGITUDE	LATITUDE	LONGITUDE	
MANSUR 33-4-D	38°57'55.76"N 38.96549°N	108°14'00.52"W 108.23348°W	38°57'55.82"N 38.96551°N	108°13'58.24"W 108.23284°W	1838' FNL 611' FEL	38°57'56.80"N 38.96578°N	108°14'05.55"W 108.23488°W	38°57'56.87"N 38.96580°N	108°14'03.26"W 108.23424°W	1733' FNL 1007' FEL
MANSUR 33-4-C	38°57'55.42"N 38.96539°N	108°14'00.45"W 108.23346°W	38°57'55.48"N 38.96541°N	108°13'58.17"W 108.23282°W	1873' FNL 606' FEL					
MANSUR 33-4	38°57'54.62"N 38.96517°N	108°13'59.34"W 108.23315°W	38°57'54.68"N 38.96519°N	108°13'57.05"W 108.23251°W	1954' FNL 518' FEL					

RELATIVE COORDINATES - From Surface Position to Bottom Hole		
WELL NAME	NORTH	EAST
MANSUR 33-4-D	104.6'	-397.4'

