



7136 South Yale Avenue, Suite 414  
Tulsa, Oklahoma 74136-6378

phone 918.925.9739

fax 866.534.4559

[WWW.HZMUD.COM/25](http://WWW.HZMUD.COM/25)

### Customer Information

**Operator:** Noble Energy Inc  
1625 Broadway  
Suite 2200  
Denver, Colorado 80202

**Geologist:** Holly Duncan  
Noble Energy Inc.

### Mud Logging Details

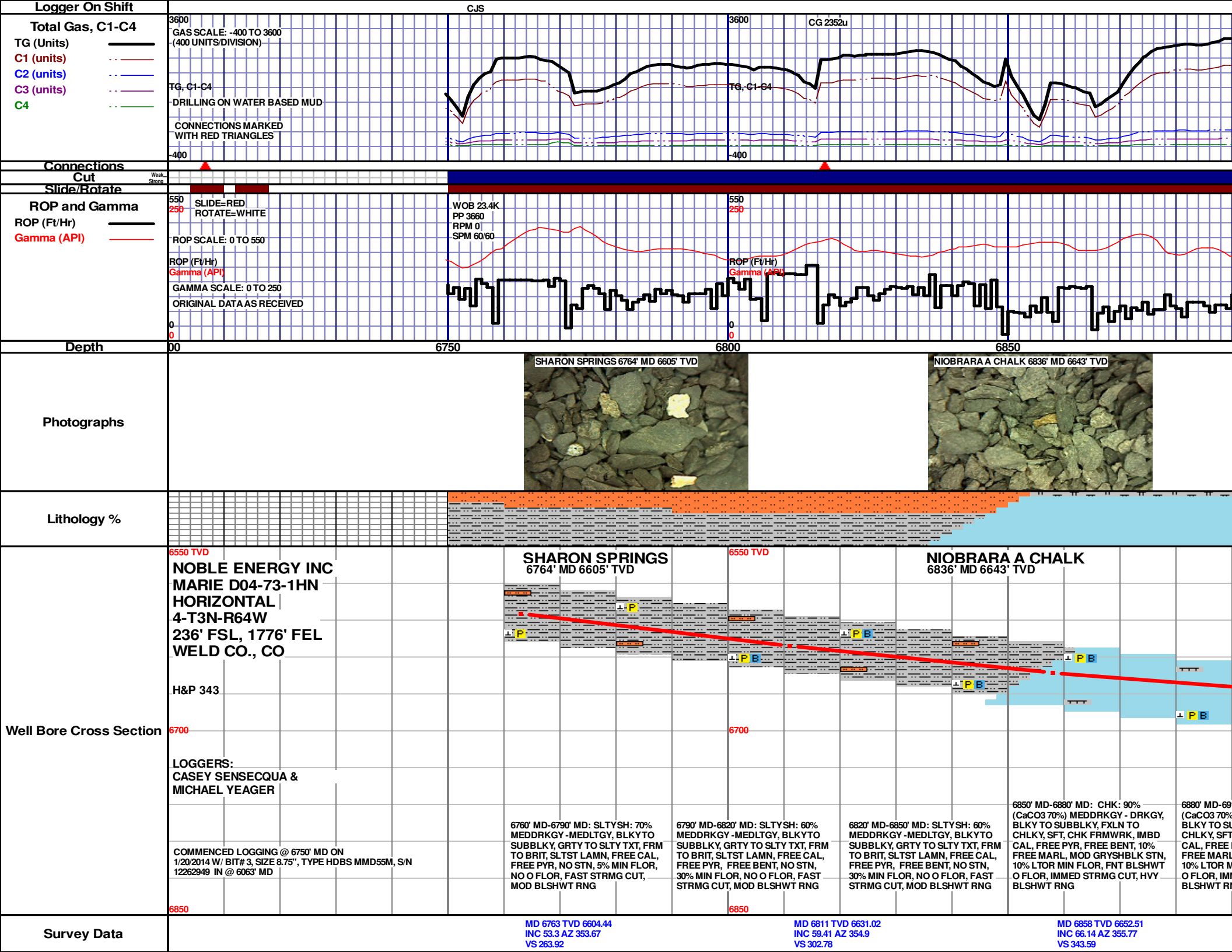
**Logger:** Casey Sensecqua &  
Michael Yeager  
**Log Interval:** 6750' MD to 11120' MD  
**Start Date:** January 20, 2014  
**Release Date:** January 23, 2014

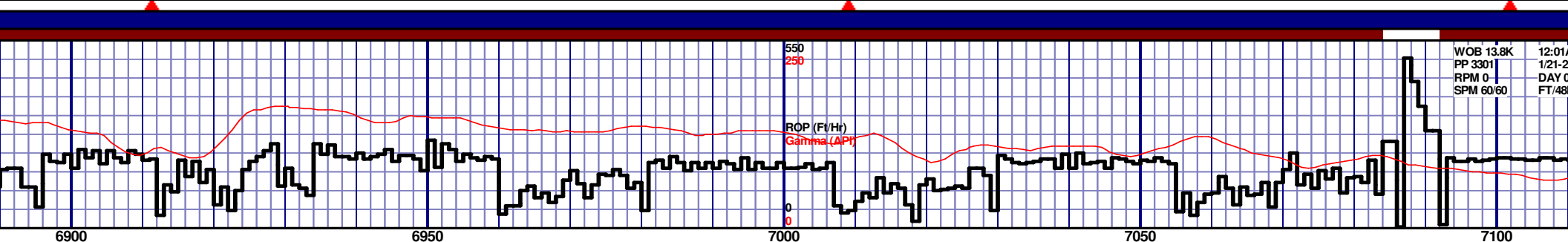
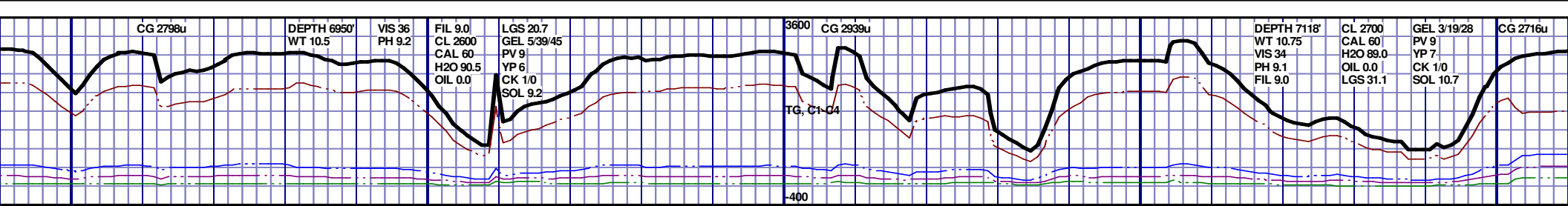
### Well Information

**Well Name:** Marie D04-73-1HN  
**Horizontal**  
**Location:** 4-T3N-R64W  
236' FSL, 1776' FEL

**County:** Weld  
**State:** Colorado

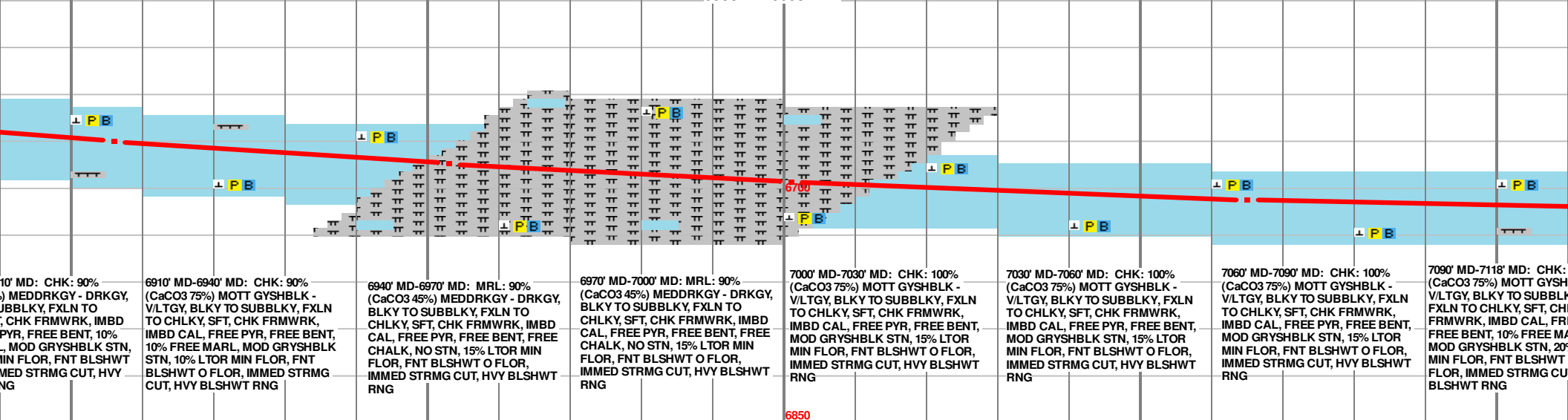
**Drilling Rig:** H&P 343  
**Total Depth:** 11120' MD  
**TD Date:** January 23, 2014  
**Formation:** Niobrara B Chalk  
**KB Elevation:** 4744'  
**GR Elevation:** 4720'  
**API Number:** 05-123-38312-0000





**NIOBRARA A MARL**  
6918' MD 6674' TVD

**NIOBRARA B CHALK**  
6988' MD 6693' TVD

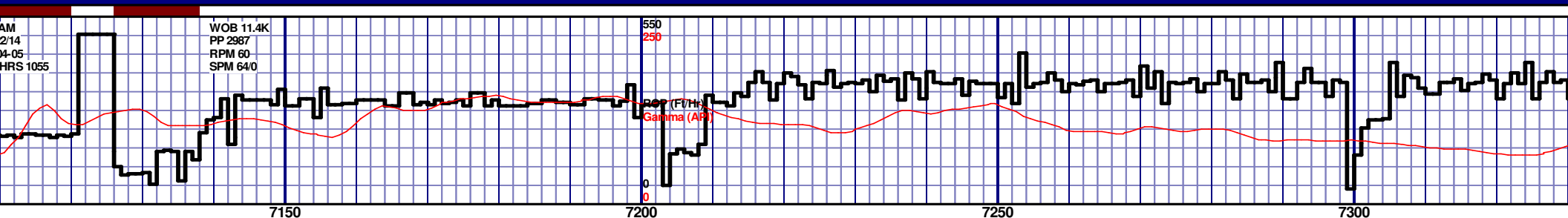
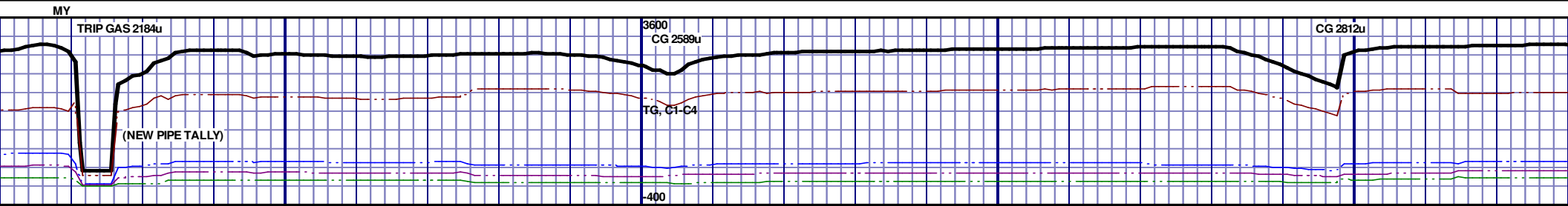


MD 6906 TVD 6670.18  
INC 70.67 AZ 357.14  
VS 387.35

MD 6953 TVD 6684.5  
INC 73.83 AZ 359.28  
VS 431.5

MD 7001 TVD 6696.58  
INC 77.02 AZ 359.54  
VS 477.47

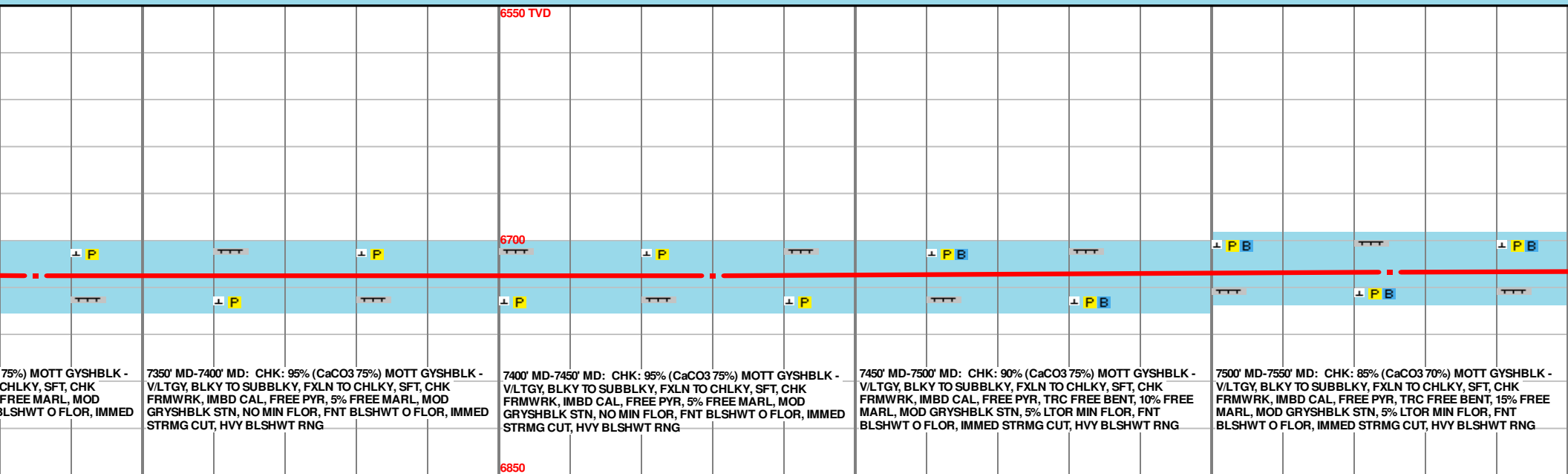
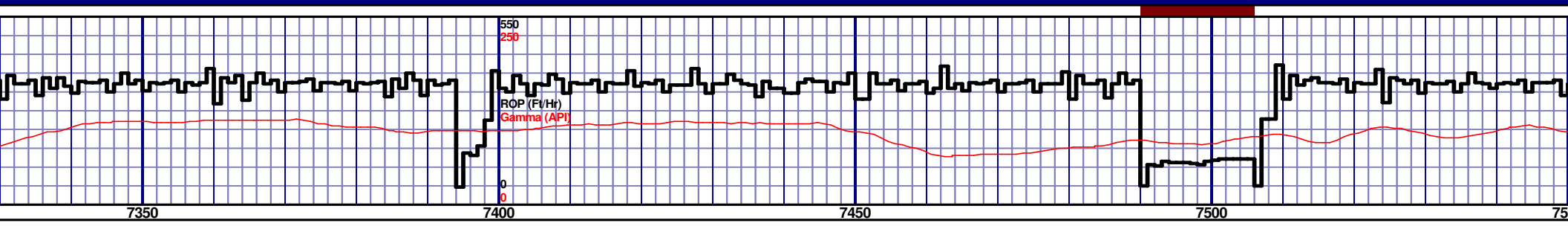
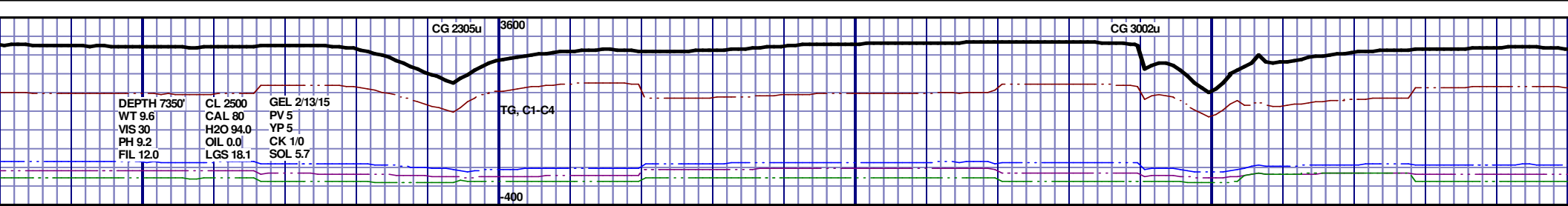
MD 7065 TVD 6707.63  
INC 83.1 AZ 359.9  
VS 539.87



<p>TOOH @ 7118' MD @ 3:30 PM ON 1/20/2014 FOR INTERMEDIATE CASING OPERATIONS. TIH @ 7:10 PM ON 1/21/2014. RESUMED DRILLING ON 1/22/2014 @ 1:20 AM W/ BIT #4 6.125" SMITH SDI513 S/N JH4565 IN @ 7118' MD.</p>				6550 TVD							
SWITCHING TO 50FT SAMPLE INTERVAL											
<p>7118' MD-7150' MD: CHK: 90% (CaCO3 75%) MOTT GYSHBLK - V/LTGY, BLKY TO SUBBLKY, FXLN TO CHLKY, SFT, CHK FRMWRK, IMBD CAL, FREE PYR, TRC FREE BENT, 10% FREE MARL, MOD GRYSHBLK STN, 5% LTOR MIN FLOR, FNT BLSHWT O FLOR, IMMED STRMG CUT, HVY BLSHWT RNG</p>				<p>7150' MD-7200' MD: CHK: 85% (CaCO3 70%) MOTT GYSHBLK - V/LTGY, BLKY TO SUBBLKY, FXLN TO CHLKY, SFT, CHK FRMWRK, IMBD CAL, FREE PYR, TRC FREE BENT, 15% FREE MARL, MOD GRYSHBLK STN, 5% LTOR MIN FLOR, FNT BLSHWT O FLOR, IMMED STRMG CUT, HVY BLSHWT RNG</p>				<p>7200' MD-7250' MD: CHK: 90% (CaCO3 75%) MOTT GYSHBLK - V/LTGY, BLKY TO SUBBLKY, FXLN TO CHLKY, SFT, CHK FRMWRK, IMBD CAL, FREE PYR, TRC FREE BENT, 10% FREE MARL, MOD GRYSHBLK STN, 5% LTOR MIN FLOR, FNT BLSHWT O FLOR, IMMED STRMG CUT, HVY BLSHWT RNG</p>			
<p>7250' MD-7300' MD: CHK: 90% (CaCO3 75%) MOTT GYSHBLK - V/LTGY, BLKY TO SUBBLKY, FXLN TO CHLKY, SFT, CHK FRMWRK, IMBD CAL, FREE PYR, TRC FREE BENT, 10% FREE MARL, MOD GRYSHBLK STN, 5% LTOR MIN FLOR, FNT BLSHWT O FLOR, IMMED STRMG CUT, HVY BLSHWT RNG</p>				<p>7300' MD-7350' MD: CHK: 90% (CaCO3 75%) MOTT GYSHBLK - V/LTGY, BLKY TO SUBBLKY, FXLN TO CHLKY, SFT, CHK FRMWRK, IMBD CAL, FREE PYR, TRC FREE BENT, 10% FREE MARL, MOD GRYSHBLK STN, 5% LTOR MIN FLOR, FNT BLSHWT O FLOR, IMMED STRMG CUT, HVY BLSHWT RNG</p>							

MD 7146 TVD 6714.79  
INC 86.76 AZ 0.12  
VS 619.82

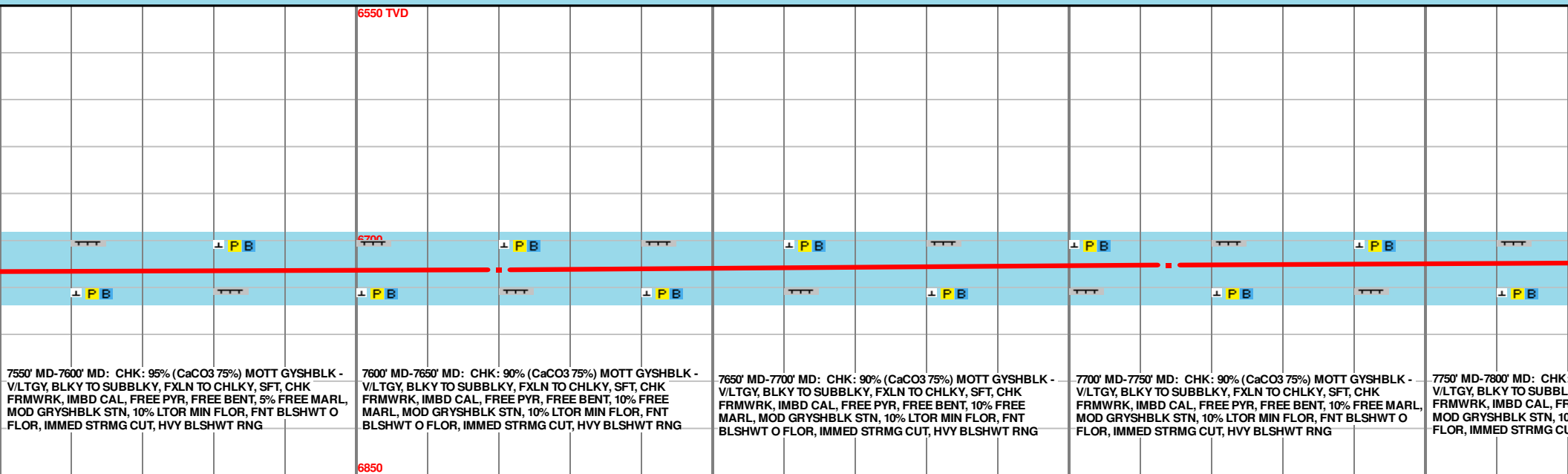
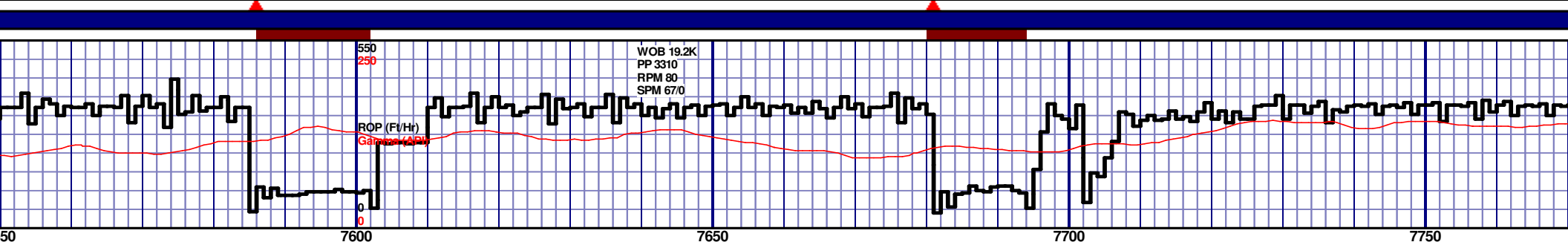
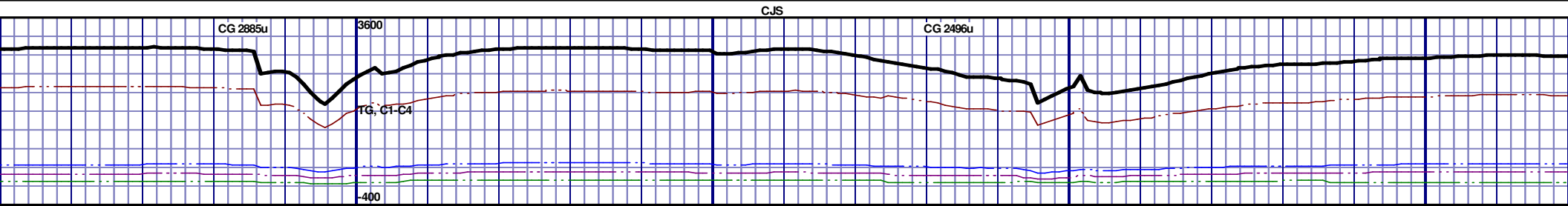
MD 7241 TVD 6719.44  
INC 87.63 AZ 0.75  
VS 713.95



MD 7335 TVD 6722.55  
INC 88.58 AZ 0.77  
VS 807.21

MD 7430 TVD 6722.6  
INC 91.36 AZ 0.94  
VS 901.53

MD 7525 TVD 6720.24  
INC 91.48 AZ 0.64  
VS 995.82



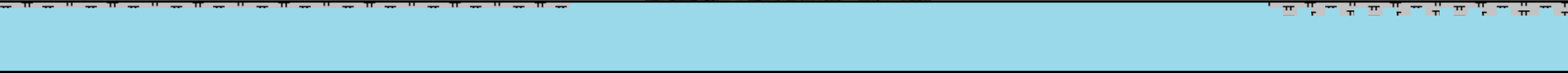
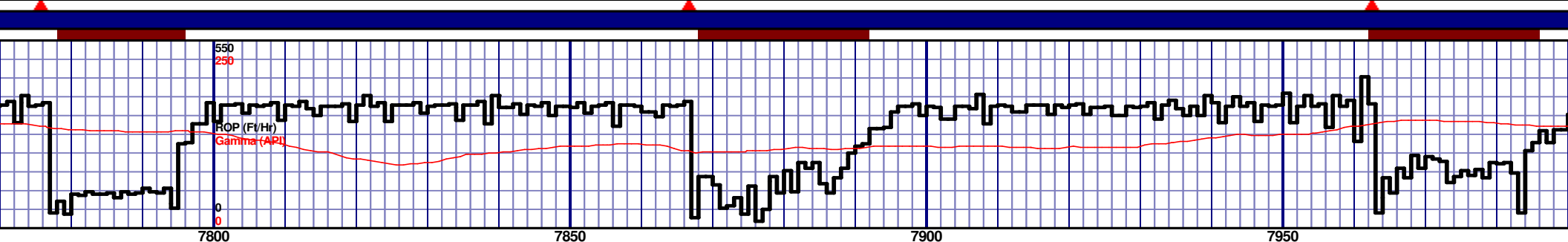
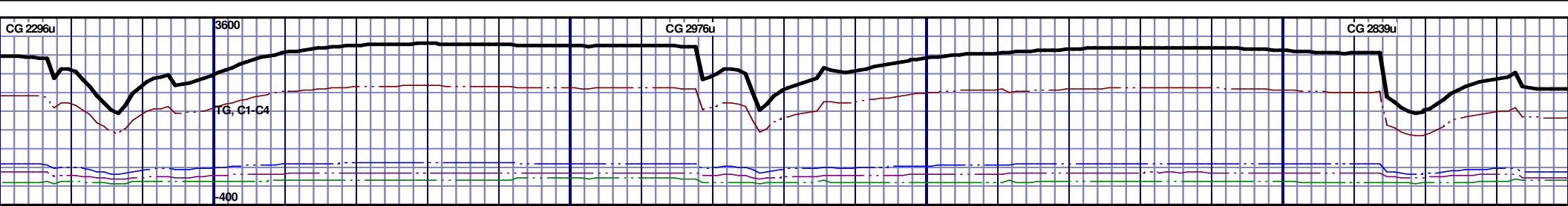
7550' MD-7600' MD: CHK: 95% (CaCO3 75%) MOTT GYSHBLK - V/LTGY, BLKY TO SUBBLKY, FXLN TO CHLKY, SFT, CHK FRMWRK, IMBD CAL, FREE PYR, FREE BENT, 10% FREE MARL, MOD GRYSBLK STN, 10% LTOR MIN FLOR, FNT BLSHWT O FLOR, IMMED STRMG CUT, HVY BLSHWT RNG

7600' MD-7650' MD: CHK: 90% (CaCO3 75%) MOTT GYSHBLK - V/LTGY, BLKY TO SUBBLKY, FXLN TO CHLKY, SFT, CHK FRMWRK, IMBD CAL, FREE PYR, FREE BENT, 10% FREE MARL, MOD GRYSBLK STN, 10% LTOR MIN FLOR, FNT BLSHWT O FLOR, IMMED STRMG CUT, HVY BLSHWT RNG

7650' MD-7700' MD: CHK: 90% (CaCO3 75%) MOTT GYSHBLK - V/LTGY, BLKY TO SUBBLKY, FXLN TO CHLKY, SFT, CHK FRMWRK, IMBD CAL, FREE PYR, FREE BENT, 10% FREE MARL, MOD GRYSBLK STN, 10% LTOR MIN FLOR, FNT BLSHWT O FLOR, IMMED STRMG CUT, HVY BLSHWT RNG

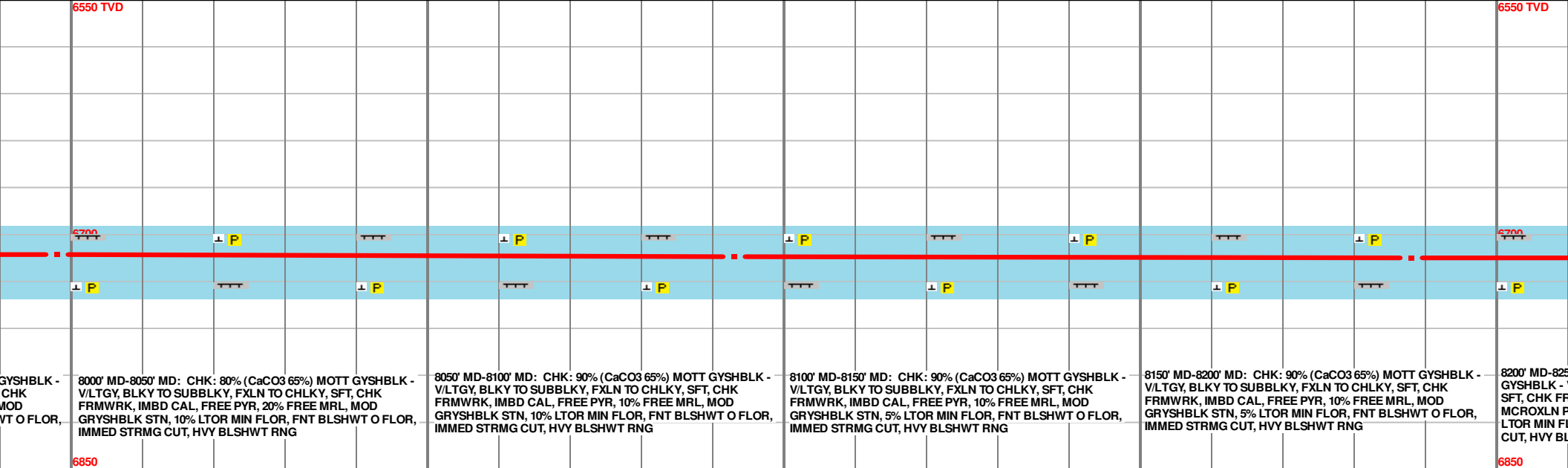
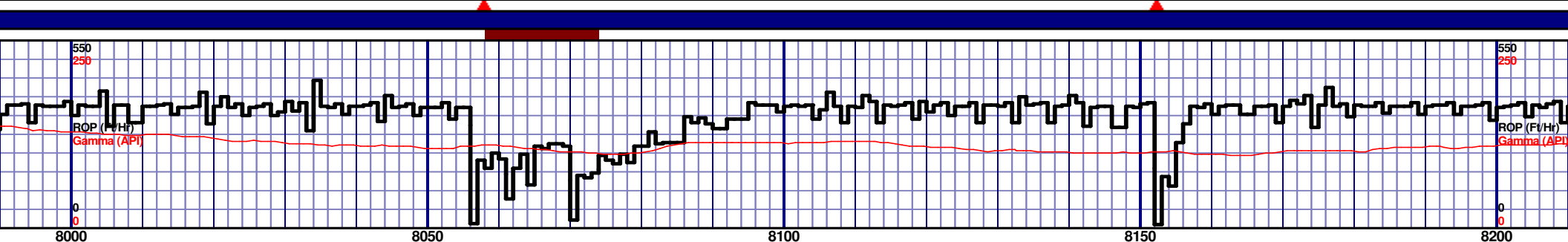
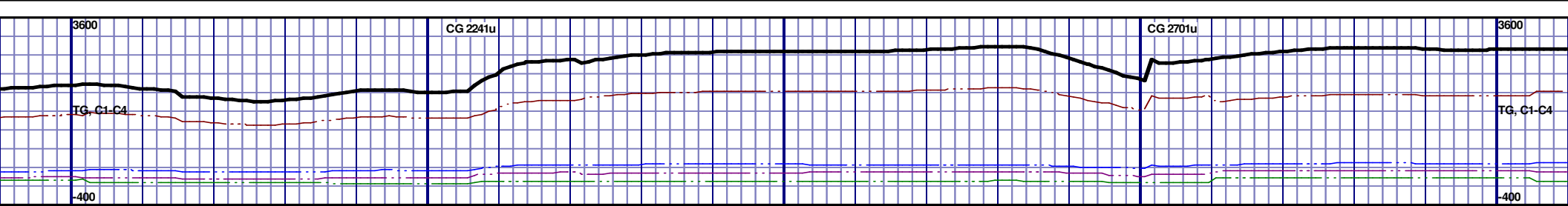
7700' MD-7750' MD: CHK: 90% (CaCO3 75%) MOTT GYSHBLK - V/LTGY, BLKY TO SUBBLKY, FXLN TO CHLKY, SFT, CHK FRMWRK, IMBD CAL, FREE PYR, FREE BENT, 10% FREE MARL, MOD GRYSBLK STN, 10% LTOR MIN FLOR, FNT BLSHWT O FLOR, IMMED STRMG CUT, HVY BLSHWT RNG

7750' MD-7800' MD: CHK: 90% (CaCO3 75%) MOTT GYSHBLK - V/LTGY, BLKY TO SUBBLKY, FXLN TO CHLKY, SFT, CHK FRMWRK, IMBD CAL, FREE PYR, FREE BENT, 10% FREE MARL, MOD GRYSBLK STN, 10% LTOR MIN FLOR, FNT BLSHWT O FLOR, IMMED STRMG CUT, HVY BLSHWT RNG



6550 TVD														
90% (CaCO3 75%) MOTT GYSHBLK - V/LTGY, FXLN TO CHLKY, SFT, CHK FRMWRK, IMBD CAL, FREE PYR, FREE BENT, 10% FREE MRL, 10% LTOR MIN FLOR, FNT BLSHWT O FLOR, IMMED STRMG CUT, HVY BLSHWT RNG					7800' MD-7850' MD: CHK: 90% (CaCO3 75%) MOTT GYSHBLK - V/LTGY, BLKY TO SUBBLKY, FXLN TO CHLKY, SFT, CHK FRMWRK, IMBD CAL, FREE PYR, FREE BENT, 10% FREE MRL, MOD GRYSHBLK STN, 10% LTOR MIN FLOR, FNT BLSHWT O FLOR, IMMED STRMG CUT, HVY BLSHWT RNG					7850' MD-7900' MD: CHK: 100% (CaCO3 65%) MOTT GYSHBLK - V/LTGY, BLKY TO SUBBLKY, FXLN TO CHLKY, SFT, CHK FRMWRK, IMBD CAL, FREE PYR, MOD GRYSHBLK STN, 10% LTOR MIN FLOR, FNT BLSHWT O FLOR, IMMED STRMG CUT, HVY BLSHWT RNG				





GYSHBLK - CHK  
MOD  
VT O FLOR,  
IMMED STRMG CUT, HVY BLSHWT RNG

8000' MD-8050' MD: CHK: 80% (CaCO3 65%) MOTT GYSHBLK - V/LTGY, BLKY TO SUBBLKY, FXLN TO CHLKY, SFT, CHK FRMWRK, IMBD CAL, FREE PYR, 20% FREE MRL, MOD GRYSHBLK STN, 10% LTOR MIN FLOR, FNT BLSHWT O FLOR, IMMED STRMG CUT, HVY BLSHWT RNG

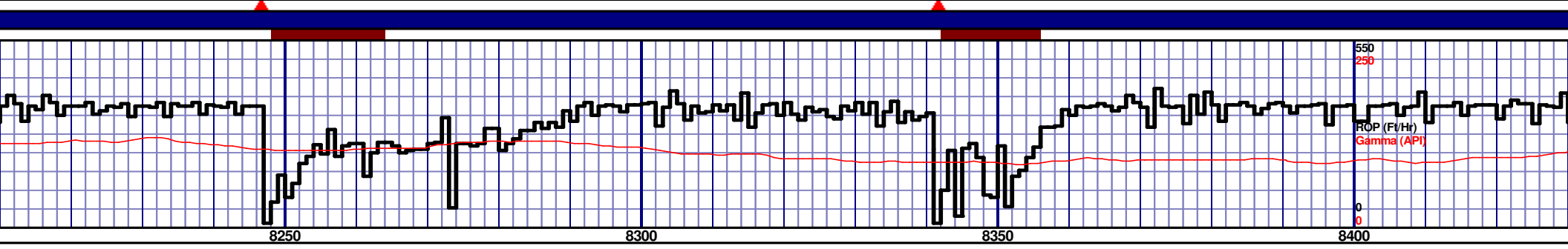
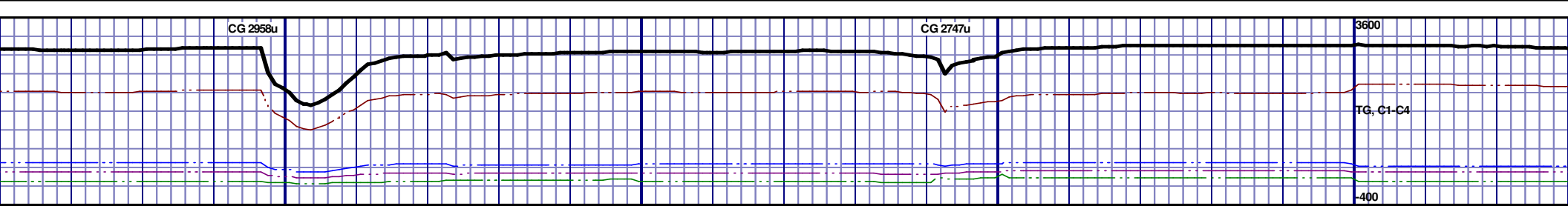
8050' MD-8100' MD: CHK: 90% (CaCO3 65%) MOTT GYSHBLK - V/LTGY, BLKY TO SUBBLKY, FXLN TO CHLKY, SFT, CHK FRMWRK, IMBD CAL, FREE PYR, 10% FREE MRL, MOD GRYSHBLK STN, 10% LTOR MIN FLOR, FNT BLSHWT O FLOR, IMMED STRMG CUT, HVY BLSHWT RNG

8100' MD-8150' MD: CHK: 90% (CaCO3 65%) MOTT GYSHBLK - V/LTGY, BLKY TO SUBBLKY, FXLN TO CHLKY, SFT, CHK FRMWRK, IMBD CAL, FREE PYR, 10% FREE MRL, MOD GRYSHBLK STN, 5% LTOR MIN FLOR, FNT BLSHWT O FLOR, IMMED STRMG CUT, HVY BLSHWT RNG

8150' MD-8200' MD: CHK: 90% (CaCO3 65%) MOTT GYSHBLK - V/LTGY, BLKY TO SUBBLKY, FXLN TO CHLKY, SFT, CHK FRMWRK, IMBD CAL, FREE PYR, 10% FREE MRL, MOD GRYSHBLK STN, 5% LTOR MIN FLOR, FNT BLSHWT O FLOR, IMMED STRMG CUT, HVY BLSHWT RNG

8200' MD-8250' MD: CHK: 90% (CaCO3 65%) MOTT GYSHBLK - V/LTGY, BLKY TO SUBBLKY, FXLN TO CHLKY, SFT, CHK FRMWRK, IMBD CAL, FREE PYR, 10% FREE MRL, MOD GRYSHBLK STN, 5% LTOR MIN FLOR, FNT BLSHWT O FLOR, IMMED STRMG CUT, HVY BLSHWT RNG

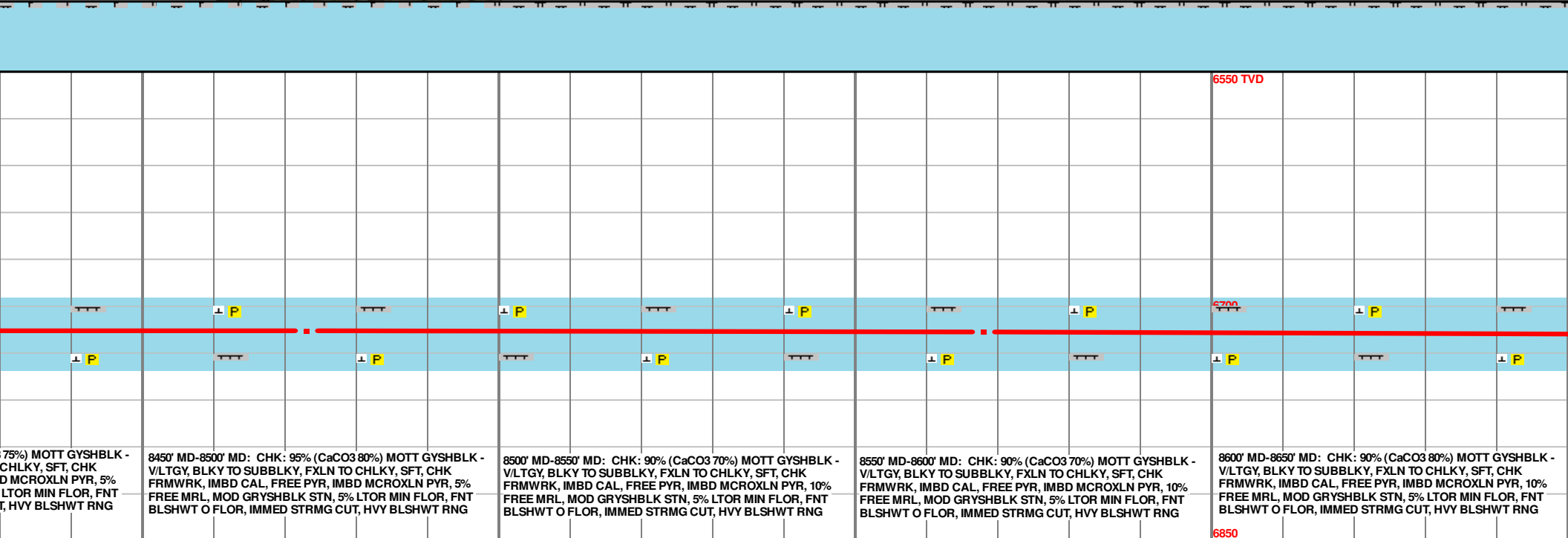




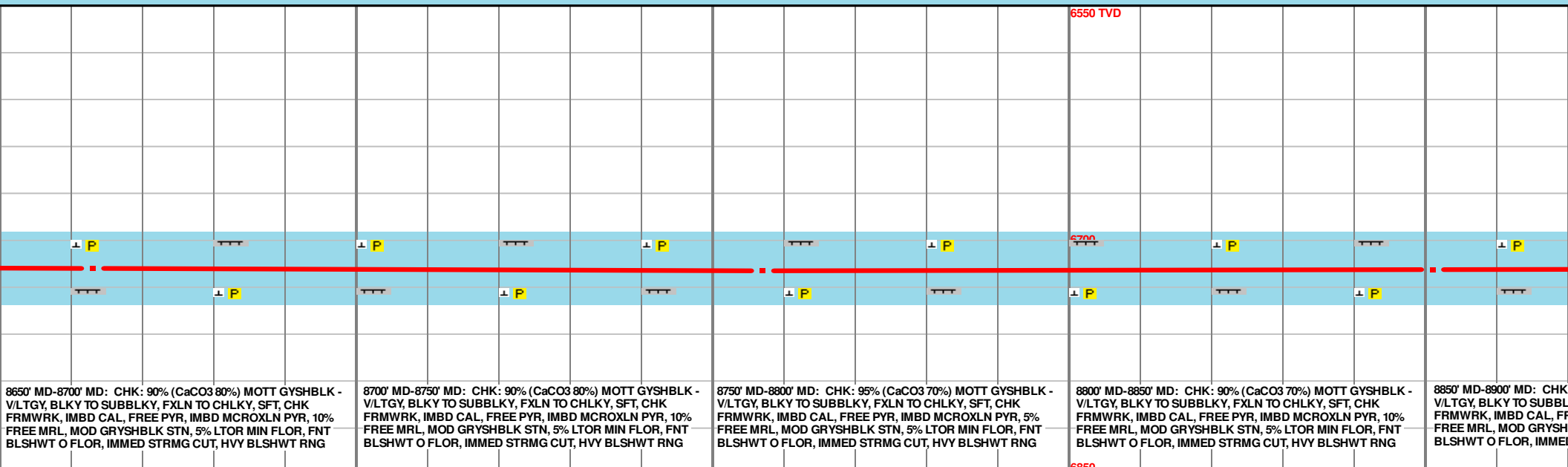
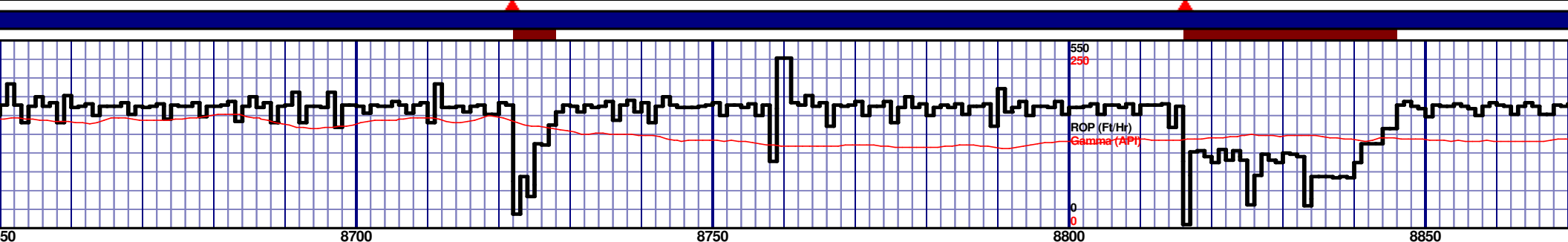
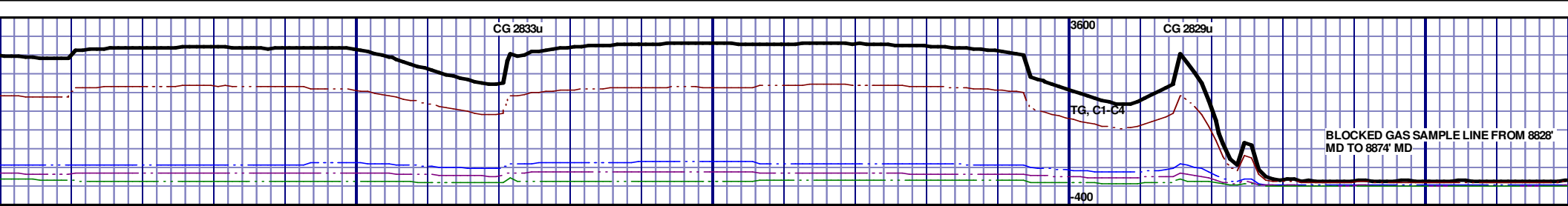
				6550 TVD			
<div>8250' MD-8300' MD: CHK: 100% (CaCO3 80%) MOTT GYSHBLK - V/LTGY, BLKY TO SUBBLKY, FXLN TO CHLKY, SFT, CHK FRMWRK, IMBD CAL, FREE PYR, IMBD MCROXLN PYR, MOD GRYSHBLK STN, 5% LTOR MIN FLOR, FNT BLSHWT O FLOR, IMMED STRMG CUT, HVY BLSHWT RNG</div>				<div>8300' MD-8350' MD: CHK: 100% (CaCO3 75%) MOTT GYSHBLK - V/LTGY, BLKY TO SUBBLKY, FXLN TO CHLKY, SFT, CHK FRMWRK, IMBD CAL, FREE PYR, IMBD MCROXLN PYR, MOD GRYSHBLK STN, 5% LTOR MIN FLOR, FNT BLSHWT O FLOR, IMMED STRMG CUT, HVY BLSHWT RNG</div>			
<div>8350' MD-8400' MD: CHK: 95% (CaCO3 75%) MOTT GYSHBLK - V/LTGY, BLKY TO SUBBLKY, FXLN TO CHLKY, SFT, CHK FRMWRK, IMBD CAL, FREE PYR, IMBD MCROXLN PYR, 5% FREE MRL, MOD GRYSHBLK STN, 5% LTOR MIN FLOR, FNT BLSHWT O FLOR, IMMED STRMG CUT, HVY BLSHWT RNG</div>				<div>8400' MD-8450' MD: CHK: 95% (CaCO3 75%) MOTT GYSHBLK - V/LTGY, BLKY TO SUBBLKY, FXLN TO CHLKY, SFT, CHK FRMWRK, IMBD CAL, FREE PYR, IMBD MCROXLN PYR, 5% FREE MRL, MOD GRYSHBLK STN, 5% LTOR MIN FLOR, FNT BLSHWT O FLOR, IMMED STRMG CUT, HVY BLSHWT RNG</div>			

MD 8283 TVD 6715.12  
INC 88.83 AZ 358.43  
VS 1746.36

MD 8378 TVD 6715.93  
INC 90.18 AZ 0.13  
VS 1840.33



MD 8568 TVD 6716.22  
INC 88.98 AZ 359.58  
VS 2028.55



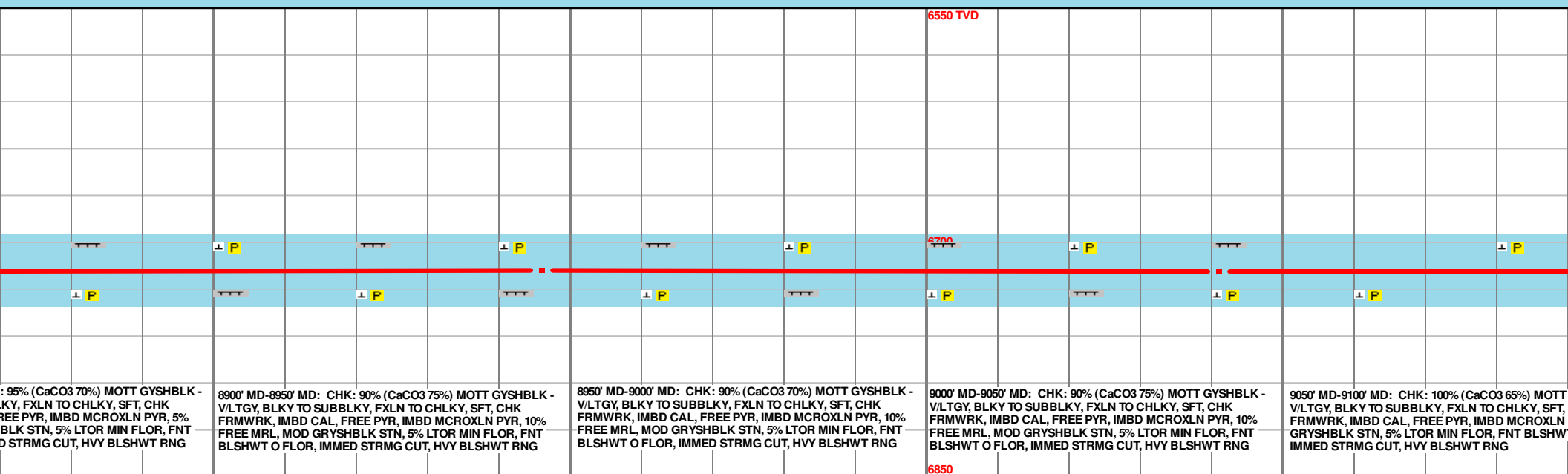
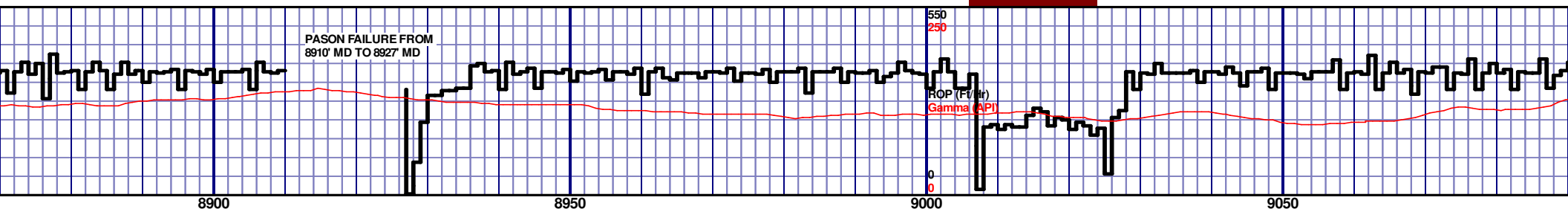
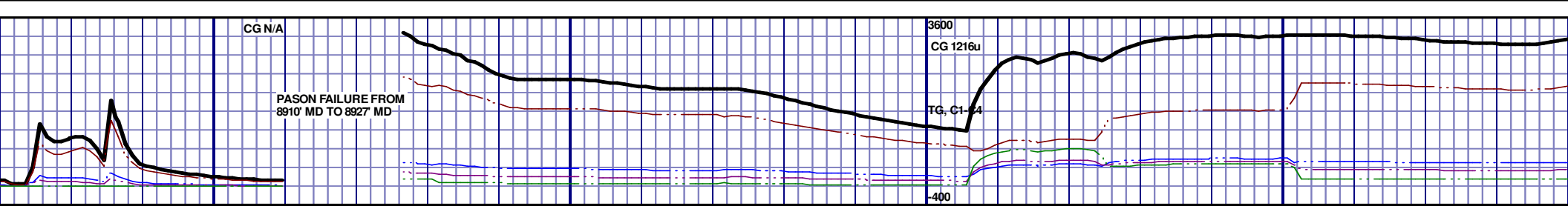
8650' MD-8700' MD: CHK: 90% (CaCO<sub>3</sub> 80%) MOTT GYSHBLK - V/LTGY, BLKY TO SUBBLKY, FXLN TO CHLKY, SFT, CHK FRMWRK, IMBD CAL, FREE PYR, IMBD MCROXLN PYR, 10% FREE MRL, MOD GRYSHBLK STN, 5% LTOR MIN FLOR, FNT BLSHWT O FLOR, IMMED STRMG CUT, HVY BLSHWT RNG

8700' MD-8750' MD: CHK: 90% (CaCO<sub>3</sub> 80%) MOTT GYSHBLK - V/LTGY, BLKY TO SUBBLKY, FXLN TO CHLKY, SFT, CHK FRMWRK, IMBD CAL, FREE PYR, IMBD MCROXLN PYR, 10% FREE MRL, MOD GRYSHBLK STN, 5% LTOR MIN FLOR, FNT BLSHWT O FLOR, IMMED STRMG CUT, HVY BLSHWT RNG

8750' MD-8800' MD: CHK: 95% (CaCO<sub>3</sub> 70%) MOTT GYSHBLK - V/LTGY, BLKY TO SUBBLKY, FXLN TO CHLKY, SFT, CHK FRMWRK, IMBD CAL, FREE PYR, IMBD MCROXLN PYR, 5% FREE MRL, MOD GRYSHBLK STN, 5% LTOR MIN FLOR, FNT BLSHWT O FLOR, IMMED STRMG CUT, HVY BLSHWT RNG

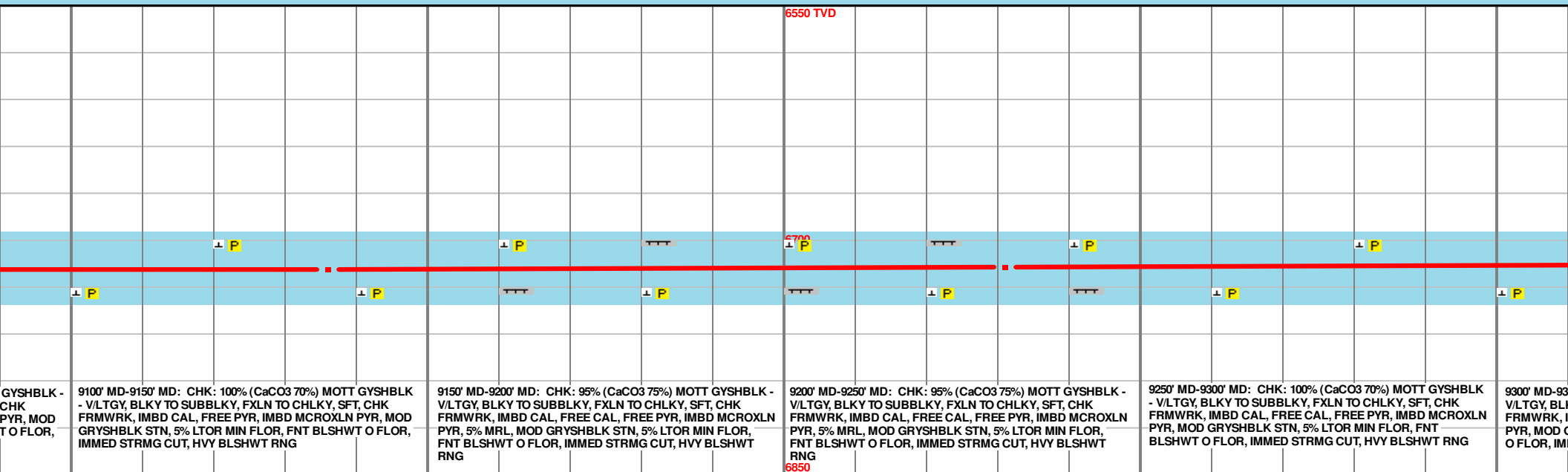
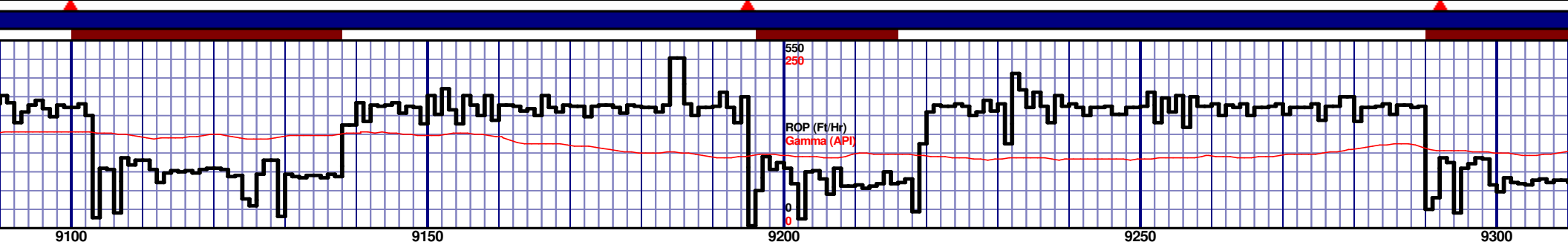
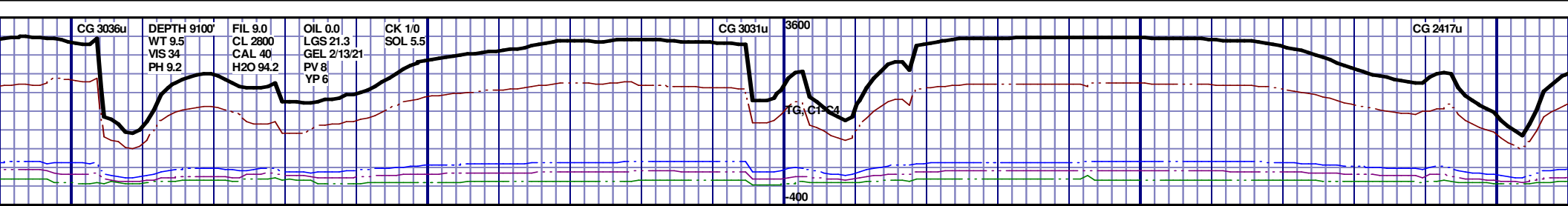
8800' MD-8850' MD: CHK: 90% (CaCO<sub>3</sub> 70%) MOTT GYSHBLK - V/LTGY, BLKY TO SUBBLKY, FXLN TO CHLKY, SFT, CHK FRMWRK, IMBD CAL, FREE PYR, IMBD MCROXLN PYR, 10% FREE MRL, MOD GRYSHBLK STN, 5% LTOR MIN FLOR, FNT BLSHWT O FLOR, IMMED STRMG CUT, HVY BLSHWT RNG

8850' MD-8900' MD: CHK: 90% (CaCO<sub>3</sub> 70%) MOTT GYSHBLK - V/LTGY, BLKY TO SUBBLKY, FXLN TO CHLKY, SFT, CHK FRMWRK, IMBD CAL, FREE PYR, IMBD MCROXLN PYR, 10% FREE MRL, MOD GRYSHBLK STN, 5% LTOR MIN FLOR, FNT BLSHWT O FLOR, IMMED STRMG CUT, HVY BLSHWT RNG



MD 8946 TVD 6718.36  
INC 89.97 AZ 357.19  
VS 2402.25

MD 9041 TVD 6719.1  
INC 89.14 AZ 354.49  
VS 2495.22



GYSHBLK -  
CHK  
PYR, MOD  
T O FLOR,

9100' MD-9150' MD: CHK: 100% (CaCO3 70%) MOTT GYSHBLK - V/LTGY, BLKY TO SUBBLKY, FXLN TO CHLKY, SFT, CHK FRMWRK, IMBD CAL, FREE PYR, IMBD MCROXLN PYR, MOD GRYSHBLK STN, 5% LTOR MIN FLOR, FNT BLSHWT O FLOR, IMMED STRMG CUT, HVY BLSHWT RNG

9150' MD-9200' MD: CHK: 95% (CaCO3 75%) MOTT GYSHBLK - V/LTGY, BLKY TO SUBBLKY, FXLN TO CHLKY, SFT, CHK FRMWRK, IMBD CAL, FREE CAL, FREE PYR, IMBD MCROXLN PYR, 5% MRL, MOD GRYSHBLK STN, 5% LTOR MIN FLOR, FNT BLSHWT O FLOR, IMMED STRMG CUT, HVY BLSHWT RNG

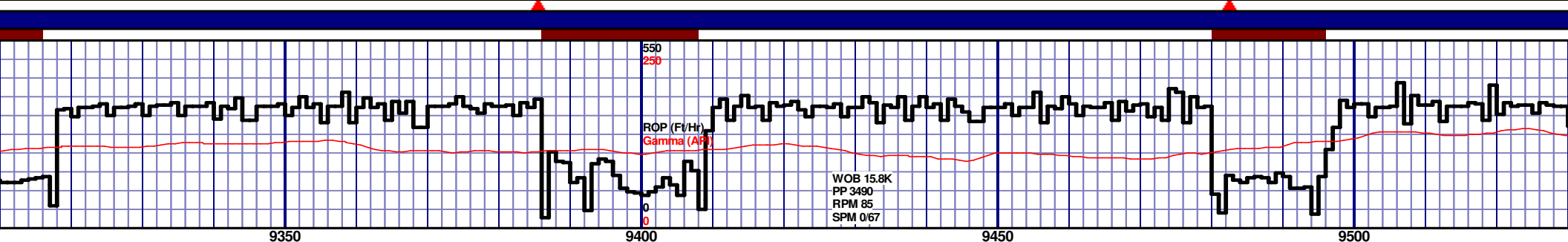
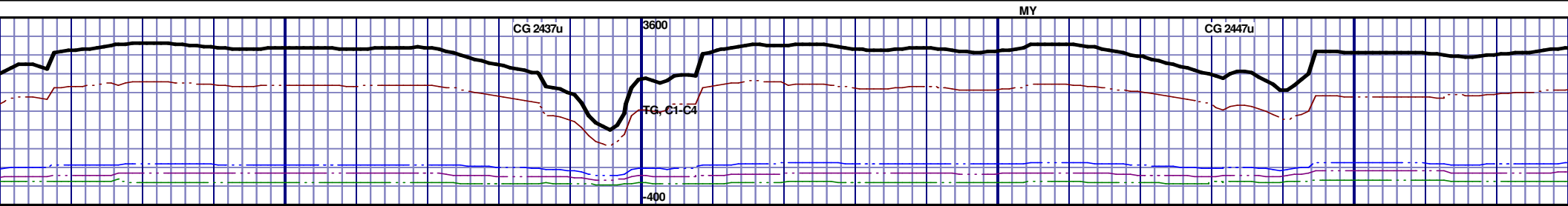
9200' MD-9250' MD: CHK: 95% (CaCO3 75%) MOTT GYSHBLK - V/LTGY, BLKY TO SUBBLKY, FXLN TO CHLKY, SFT, CHK FRMWRK, IMBD CAL, FREE CAL, FREE PYR, IMBD MCROXLN PYR, 5% MRL, MOD GRYSHBLK STN, 5% LTOR MIN FLOR, FNT BLSHWT O FLOR, IMMED STRMG CUT, HVY BLSHWT RNG

9250' MD-9300' MD: CHK: 100% (CaCO3 70%) MOTT GYSHBLK - V/LTGY, BLKY TO SUBBLKY, FXLN TO CHLKY, SFT, CHK FRMWRK, IMBD CAL, FREE CAL, FREE PYR, IMBD MCROXLN PYR, MOD GRYSHBLK STN, 5% LTOR MIN FLOR, FNT BLSHWT O FLOR, IMMED STRMG CUT, HVY BLSHWT RNG

9300' MD-9350' MD: CHK: 100% (CaCO3 70%) MOTT GYSHBLK - V/LTGY, BLKY TO SUBBLKY, FXLN TO CHLKY, SFT, CHK FRMWRK, IMBD CAL, FREE CAL, FREE PYR, IMBD MCROXLN PYR, MOD GRYSHBLK STN, 5% LTOR MIN FLOR, FNT BLSHWT O FLOR, IMMED STRMG CUT, HVY BLSHWT RNG

MD 9136 TVD 6718.92  
INC 91.08 AZ 358.83  
VS 2588.45

MD 9231 TVD 6717.16  
INC 91.05 AZ 359.37  
VS 2682.37

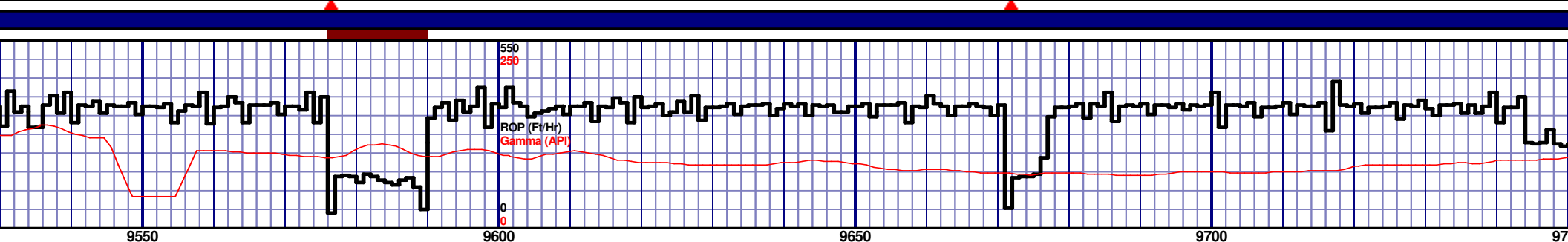
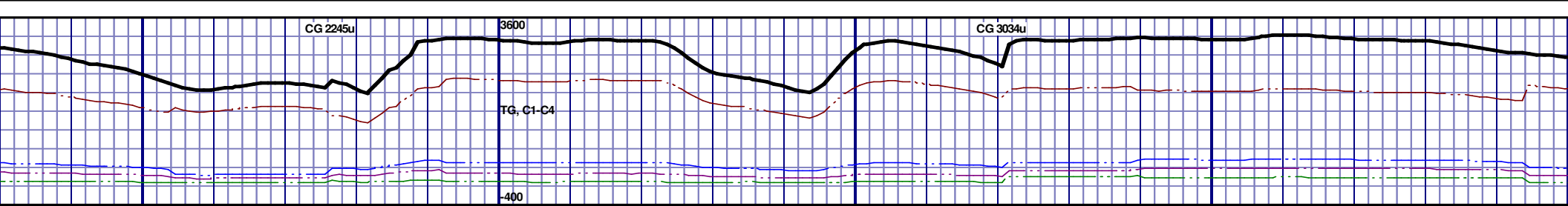


<p>50' MD: CHK: 100% (CaCO3 70%) MOTT GYSHBLK - V/LTGY, BLKY TO SUBBLKY, FXLN TO CHLKY, SFT, CHK IMBD CAL, FREE CAL, FREE PYR, IMBD MCROXLN PYR, 5% MRL, MOD GRYSHBLK STN, 5% LTOR MIN FLOR, FNT BLSHWT O FLOR, IMMED STRMG CUT, HVY BLSHWT RNG</p>	<p>9350' MD-9400' MD: CHK: 95% (CaCO3 70%) MOTT GYSHBLK - V/LTGY, BLKY TO SUBBLKY, FXLN TO CHLKY, SFT, CHK FRMWRK, IMBD CAL, FREE CAL, FREE PYR, IMBD MCROXLN PYR, 5% MRL, MOD GRYSHBLK STN, 5% LTOR MIN FLOR, FNT BLSHWT O FLOR, IMMED STRMG CUT, HVY BLSHWT RNG</p>	<p>9400' MD-9450' MD: CHK: 95% (CaCO3 75%) MOTT GYSHBLK - V/LTGY, BLKY TO SUBBLKY, FXLN TO CHLKY, SFT, CHK FRMWRK, IMBD CAL, FREE CAL, FREE PYR, IMBD MCROXLN PYR, 5% MRL, MOD GRYSHBLK STN, 5% LTOR MIN FLOR, FNT BLSHWT O FLOR, IMMED STRMG CUT, HVY BLSHWT RNG</p>	<p>9450' MD-9500' MD: CHK: 95% (CaCO3 70%) MOTT GYSHBLK - V/LTGY, BLKY TO SUBBLKY, FXLN TO CHLKY, SFT, CHK FRMWRK, IMBD CAL, FREE CAL, FREE PYR, IMBD MCROXLN PYR, 5% MRL, MOD GRYSHBLK STN, 5% LTOR MIN FLOR, FNT BLSHWT O FLOR, IMMED STRMG CUT, HVY BLSHWT RNG</p>	<p>9500' MD-9550' MD: CHK: 90% (CaCO3 70%) MOTT GYSHBLK - V/LTGY, BLKY TO SUBBLKY, FXLN TO CHLKY, SFT, CHK FRMWRK, IMBD CAL, FREE CAL, FREE PYR, 10% MRL, MOD GRYSHBLK STN, 5% LTOR MIN FLOR, FNT BLSHWT O FLOR, IMMED STRMG CUT, HVY BLSHWT RNG</p>
---	---	---	---	--

MD 9326 TVD 6715.98  
INC 90.37 AZ 0.84  
VS 2776.53

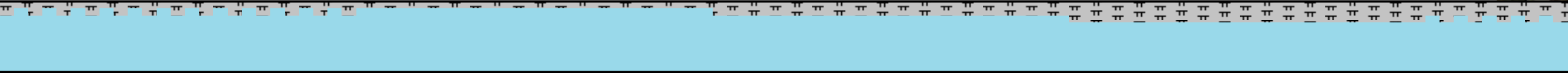
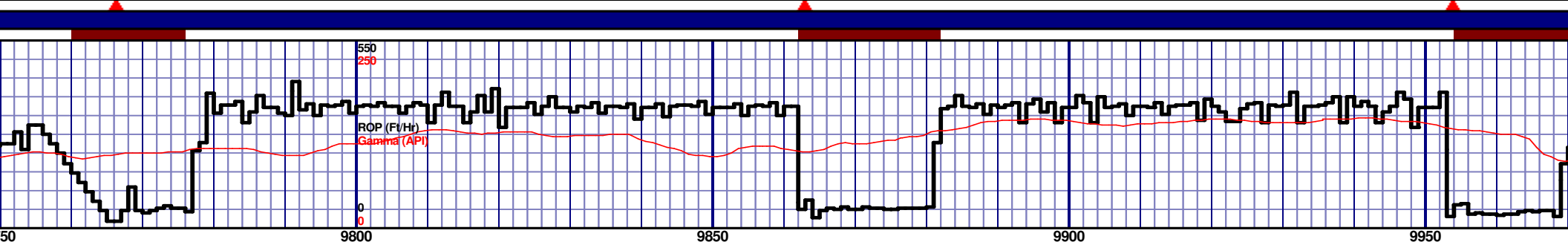
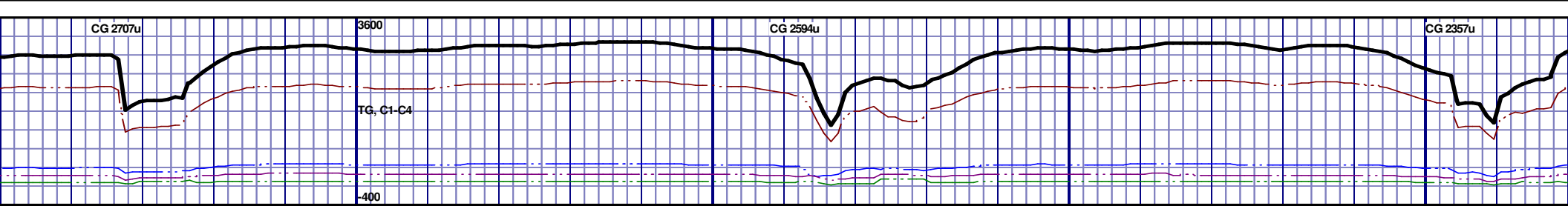
MD 9421 TVD 6715.98  
INC 89.63 AZ 2.16  
VS 2670.98

MD 9516 TVD 6716  
INC 89.17 AZ 2.52  
VS 2965.56



6550 TVD									
70%) MOTT GYSHBLK - CHLKY, SFT, CHK					9550' MD-9600' MD: CHK: 90% (CaCO3 75%) MOTT GYSHBLK - V/LTGY, BLKY TO SUBBLKY, FXLN TO CHLKY, SFT, CHK				
FRMWRK, IMBD MCROXLN					PYR, 10% MRL, MOD GRYSHBLK STN, 5% LTOR MIN FLOR, FNT				
5% LTOR MIN FLOR, FNT					FNT BLSHWT O FLOR, IMMED STRMG CUT, HVY BLSHWT RNG				
T, HVY BLSHWT RNG					9600' MD-9650' MD: CHK: 95% (CaCO3 75%) MOTT GYSHBLK - V/LTGY, BLKY TO SUBBLKY, FXLN TO CHLKY, SFT, CHK				
					FRMWRK, IMBD CAL, FREE CAL, FREE PYR, IMBD MCROXLN				
					PYR, 5% MRL, MOD GRYSHBLK STN, 5% LTOR MIN FLOR, FNT				
					BLSHWT O FLOR, IMMED STRMG CUT, HVY BLSHWT RNG				
					9650' MD-9700' MD: CHK: 95% (CaCO3 75%) MOTT GYSHBLK - V/LTGY, BLKY TO SUBBLKY, FXLN TO CHLKY, SFT, CHK				
					FRMWRK, IMBD CAL, FREE CAL, FREE PYR, IMBD MCROXLN				
					PYR, 5% MRL, MOD GRYSHBLK STN, 5% LTOR MIN FLOR, FNT				
					BLSHWT O FLOR, IMMED STRMG CUT, HVY BLSHWT RNG				
					9700' MD-9750' MD: CHK: 90% (CaCO3 75%) MOTT GYSHBLK - V/LTGY, BLKY TO SUBBLKY, FXLN TO CHLKY, SFT, CHK				
					FRMWRK, IMBD CAL, FREE CAL, FREE PYR, IMBD MCROXLN				
					PYR, 10% MRL, MOD GRYSHBLK STN, 5% LTOR MIN FLOR, FNT				
					FNT BLSHWT O FLOR, IMMED STRMG CUT, HVY BLSHWT RNG				



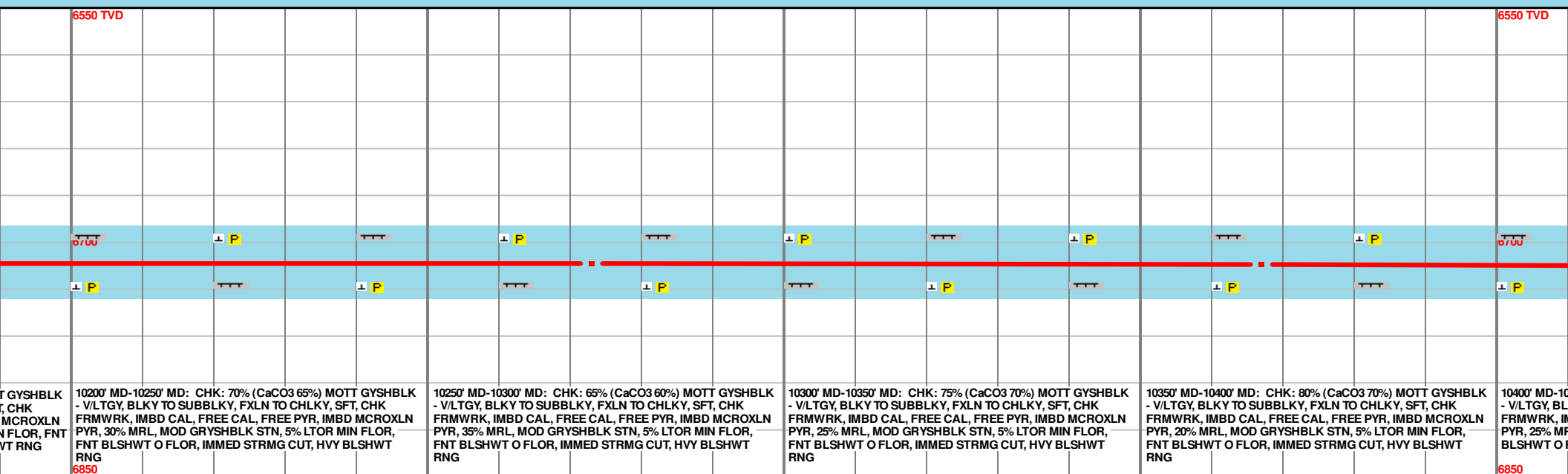
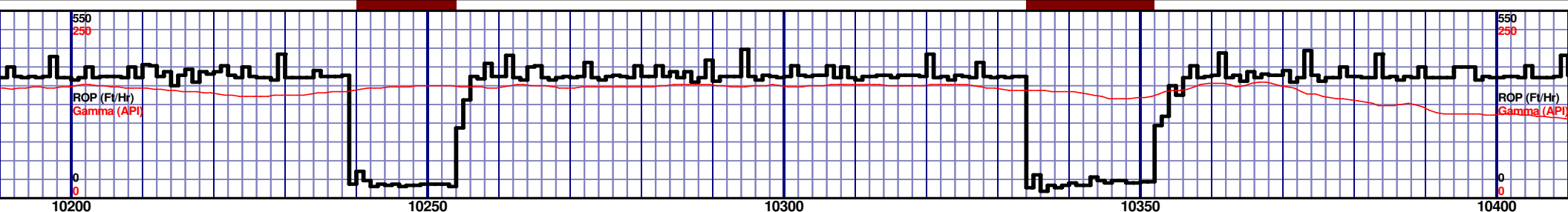


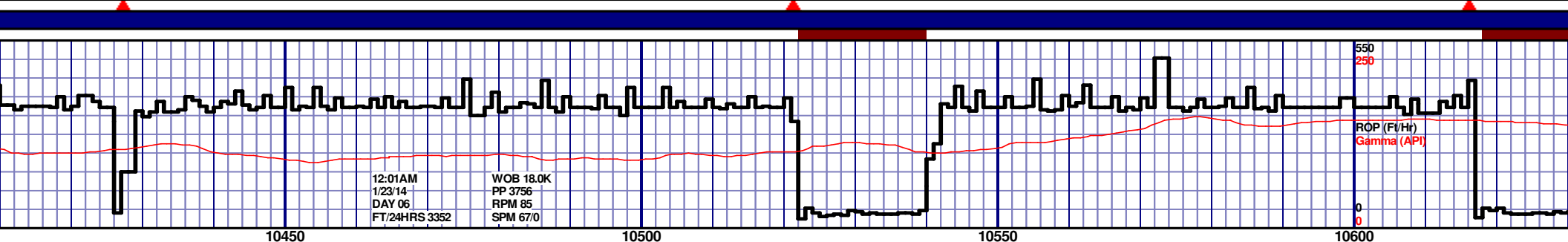
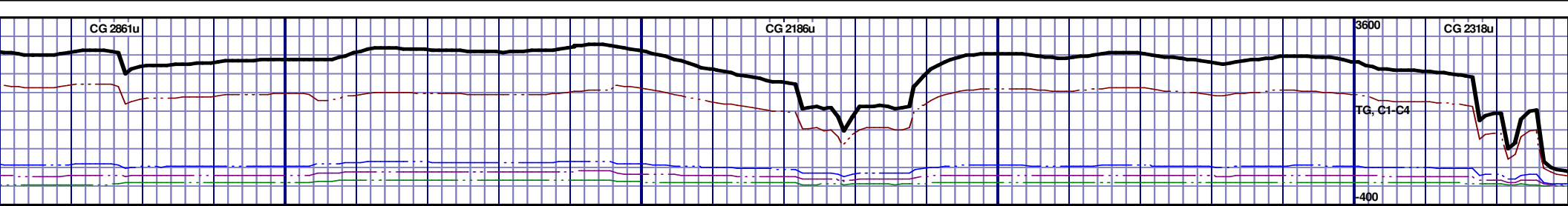
6550 TVD									
9750' MD-9800' MD: CHK: 85% (CaCO3 70%) MOTT GYSHBLK - V/LTGY, BLKY TO SUBBLKY, FXLN TO CHLKY, SFT, CHK FRMWRK, IMBD CAL, FREE CAL, FREE PYR, IMBD MCROXLN PYR, 15% MRL, MOD GRYSHBLK STN, 5% LTOR MIN FLOR, FNT BLSHWT O FLOR, IMMED STRMG CUT, HVY BLSHWT RNG					9800' MD-9850' MD: CHK: 90% (CaCO3 75%) MOTT GYSHBLK - V/LTGY, BLKY TO SUBBLKY, FXLN TO CHLKY, SFT, CHK FRMWRK, IMBD CAL, FREE CAL, FREE PYR, IMBD MCROXLN PYR, 10% MRL, MOD GRYSHBLK STN, 5% LTOR MIN FLOR, FNT BLSHWT O FLOR, IMMED STRMG CUT, HVY BLSHWT RNG				
9850' MD-9900' MD: CHK: 80% (CaCO3 70%) MOTT GYSHBLK - V/LTGY, BLKY TO SUBBLKY, FXLN TO CHLKY, SFT, CHK FRMWRK, IMBD CAL, FREE CAL, FREE PYR, IMBD MCROXLN PYR, 20% MRL, MOD GRYSHBLK STN, 5% LTOR MIN FLOR, FNT BLSHWT O FLOR, IMMED STRMG CUT, HVY BLSHWT RNG					9900' MD-9950' MD: CHK: 70% (CaCO3 65%) MOTT GYSHBLK - V/LTGY, BLKY TO SUBBLKY, FXLN TO CHLKY, SFT, CHK FRMWRK, IMBD CAL, FREE CAL, FREE PYR, IMBD MCROXLN PYR, 30% MRL, MOD GRYSHBLK STN, 5% LTOR MIN FLOR, FNT BLSHWT O FLOR, IMMED STRMG CUT, HVY BLSHWT RNG				
9950' MD-10000' MD: CHK: 70% (CaCO3 65%) MOTT GYSHBLK - V/LTGY, BLKY TO SUBBLKY, FXLN TO CHLKY, SFT, CHK FRMWRK, IMBD CAL, FREE CAL, FREE PYR, IMBD MCROXLN PYR, 30% MRL, MOD GRYSHBLK STN, 5% LTOR MIN FLOR, FNT BLSHWT O FLOR, IMMED STRMG CUT, HVY BLSHWT RNG					9950' MD-10000' MD: CHK: 70% (CaCO3 65%) MOTT GYSHBLK - V/LTGY, BLKY TO SUBBLKY, FXLN TO CHLKY, SFT, CHK FRMWRK, IMBD CAL, FREE CAL, FREE PYR, IMBD MCROXLN PYR, 30% MRL, MOD GRYSHBLK STN, 5% LTOR MIN FLOR, FNT BLSHWT O FLOR, IMMED STRMG CUT, HVY BLSHWT RNG				

MD 9800 TVD 6717.77  
INC 91.7 AZ 0.63  
VS 3248.04

MD 9894 TVD 6715.72  
INC 90.8 AZ 0.1  
VS 3341.25

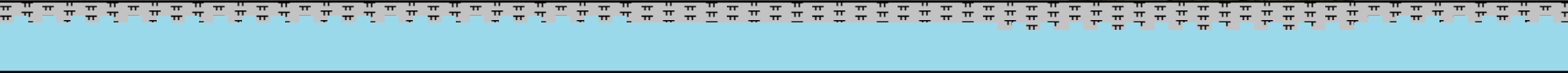






12:01AM  
1/23/14  
DAY 06  
FT/24HRS 3352

WOB 18.0K  
PP 3756  
RPM 85  
SPM 67/0

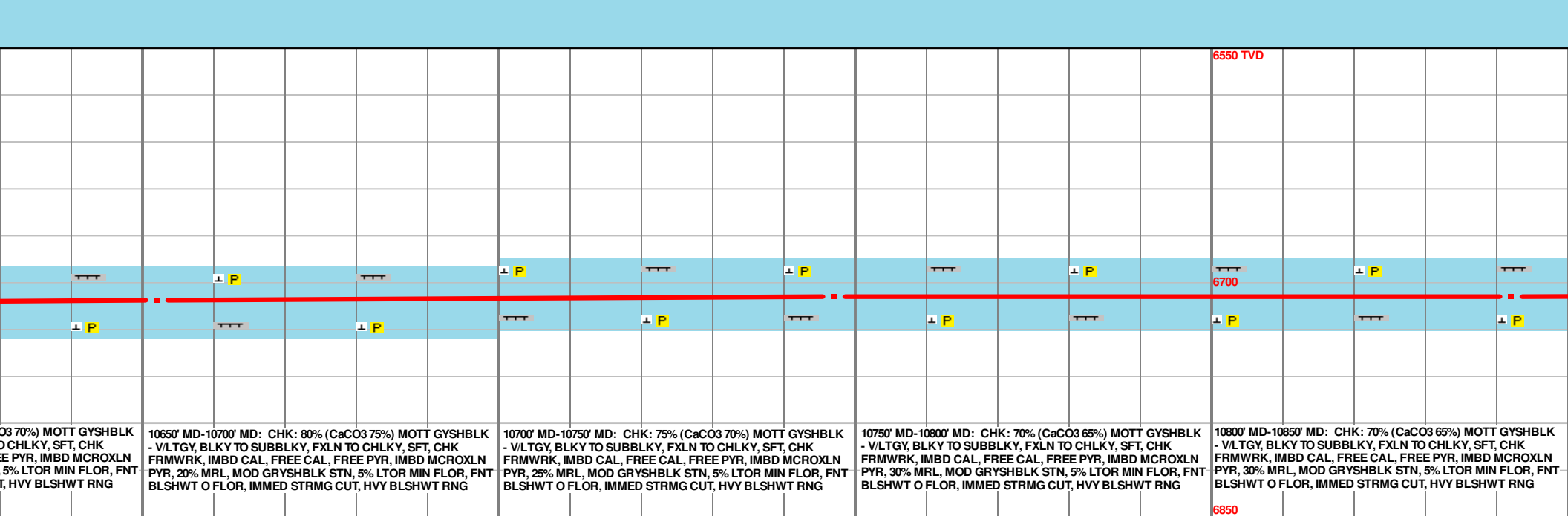
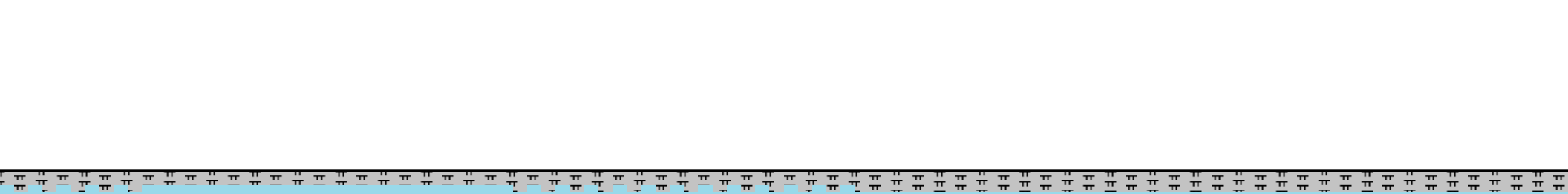
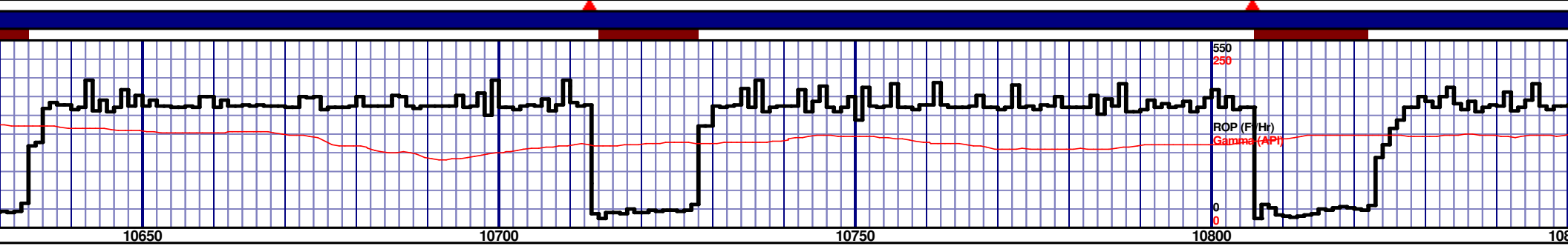
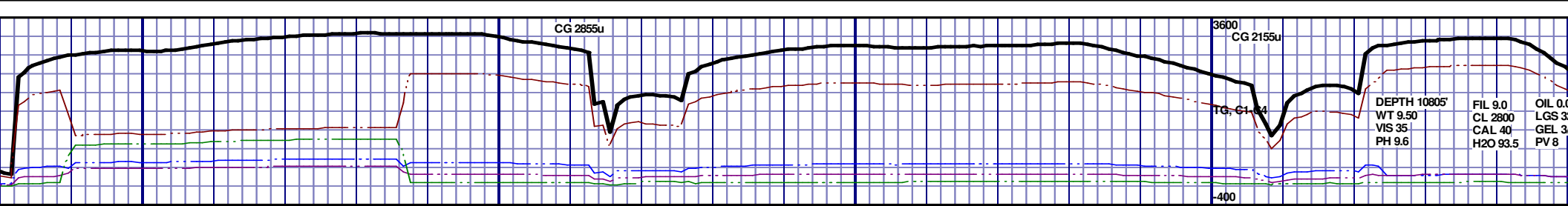


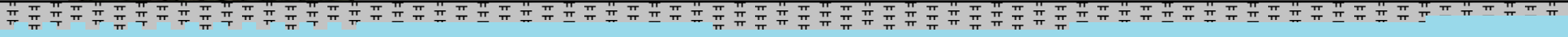
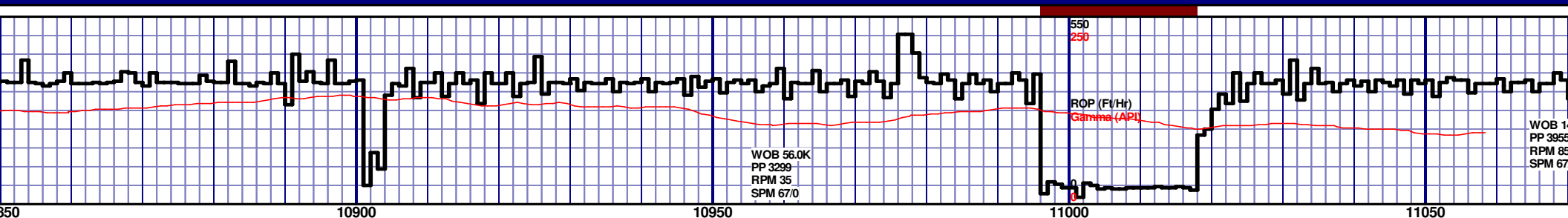
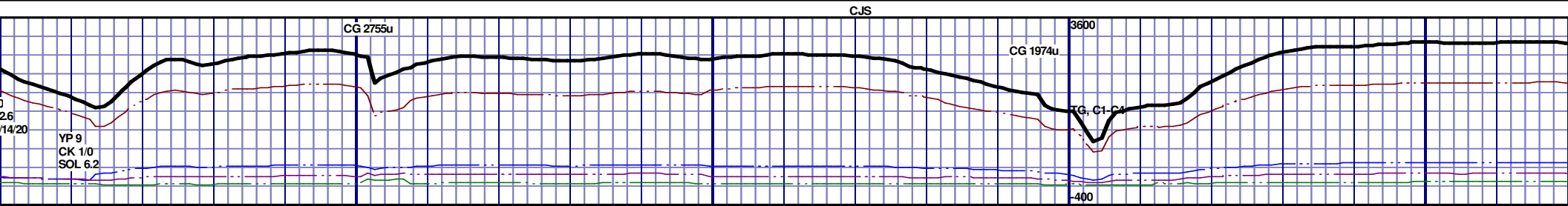
6550 TVD				
0700				
6850				

10450' MD: CHK: 75% (CaCO3 70%) MOTT GYSHBLK KY TO SUBBLKY, FXLN TO CHLKY, SFT, CHK IMBD CAL, FREE CAL, FREE PYR, IMBD MCROXLN PYR, 25% MRL, MOD GRYSBLK STN, 5% LTOR MIN FLOR, FNT FLOR, IMMED STRMG CUT, HVY BLSHWT RNG	10450' MD-10500' MD: CHK: 75% (CaCO3 70%) MOTT GYSHBLK - VLTGY, BLKY TO SUBBLKY, FXLN TO CHLKY, SFT, CHK FRMWRK, IMBD CAL, FREE CAL, FREE PYR, IMBD MCROXLN PYR, 25% MRL, MOD GRYSBLK STN, 5% LTOR MIN FLOR, FNT BLSHWT O FLOR, IMMED STRMG CUT, HVY BLSHWT RNG	10500' MD-10550' MD: CHK: 70% (CaCO3 65%) MOTT GYSHBLK - VLTGY, BLKY TO SUBBLKY, FXLN TO CHLKY, SFT, CHK FRMWRK, IMBD CAL, FREE CAL, FREE PYR, IMBD MCROXLN PYR, 30% MRL, MOD GRYSBLK STN, 5% LTOR MIN FLOR, FNT BLSHWT O FLOR, IMMED STRMG CUT, HVY BLSHWT RNG	10550' MD-10600' MD: CHK: 65% (CaCO3 60%) MOTT GYSHBLK - VLTGY, BLKY TO SUBBLKY, FXLN TO CHLKY, SFT, CHK FRMWRK, IMBD CAL, FREE CAL, FREE PYR, IMBD MCROXLN PYR, 35% MRL, MOD GRYSBLK STN, 5% LTOR MIN FLOR, FNT BLSHWT O FLOR, IMMED STRMG CUT, HVY BLSHWT RNG	10600' MD-10650' MD: CHK: 75% (CaCO3 70%) MOTT GYSHBLK - VLTGY, BLKY TO SUBBLKY, FXLN TO CHLKY, SFT, CHK FRMWRK, IMBD CAL, FREE CAL, FREE PYR, IMBD MCROXLN PYR, 25% MRL, MOD GRYSBLK STN, 5% LTOR MIN FLOR, FNT BLSHWT O FLOR, IMMED STRMG CUT, HVY BLSHWT RNG
---	--	---	---	---

MD 10462 TVD 6716  
INC 89.72 AZ 357.53  
VS 3903.18

MD 10557 TVD 6714.16  
INC 92.5 AZ 359.75  
VS 3996.97





												6550 TVD																	

