

WPX ENERGY ROCKY MOUNTAIN LLC-EBUS

PA 42-21

Nabors 573

Post Job Summary

Cement Surface Casing

Date Prepared: 02/25/2014

Submitted by: Grand Junction Cement Engineering

The Road to Excellence Starts with Safety

Sold To #: 300721		Ship To #: 3354150		Quote #:		Sales Order #: 901124612	
Customer: WPX ENERGY ROCKY MOUNTAIN LLC-EBUS				Customer Rep:			
Well Name: PA			Well #: 42-21			API/UWI #:	
Field: PARACHUTE		City (SAP): PARACHUTE		County/Parish: Garfield		State: Colorado	
Contractor: Nabors			Rig/Platform Name/Num: Nabors 573				
Job Purpose: Cement Surface Casing							
Well Type: Development Well				Job Type: Cement Surface Casing			
Sales Person: MAYO, MARK				Srv Supervisor: PONDER, THOMAS		MBU ID Emp #: 427112	

Job Personnel

HES Emp Name	Exp Hrs	Emp #	HES Emp Name	Exp Hrs	Emp #	HES Emp Name	Exp Hrs	Emp #
BRENNECKE, ANDREW Bailey	9.5	486345	LAULAINEN, ROGER Edward	9.5	524413	PONDER, THOMAS Lynn	9.5	427112
WESTFALL, DUSTIN A	9.5	555858						

Equipment

HES Unit #	Distance-1 way	HES Unit #	Distance-1 way	HES Unit #	Distance-1 way	HES Unit #	Distance-1 way
10551730C	60 mile	10565341	60 mile	10938678	60 mile	10989685	60 mile
11583931	60 mile	11808843	60 mile	11808849	60 mile		

Job Hours

Date	On Location Hours	Operating Hours	Date	On Location Hours	Operating Hours	Date	On Location Hours	Operating Hours
02/17/2014	9.5	2						

TOTAL	Total is the sum of each column separately							
--------------	--	--	--	--	--	--	--	--

Job

Formation Name					Date	Time	Time Zone
Formation Depth (MD)	Top		Bottom		Called Out	17 - Feb - 2014	07:00 MST
Form Type	BHST				On Location	17 - Feb - 2014	12:30 MST
Job depth MD	2238. ft	Job Depth TVD	2238. ft	Job Started	17 - Feb - 2014	17:04	MST
Water Depth		Wk Ht Above Floor		Job Completed	17 - Feb - 2014	20:45	MST
Perforation Depth (MD)	From		To	Departed Loc	17 - Feb - 2014	22:00	MST

Well Data

Description	New / Used	Max pressure psig	Size in	ID in	Weight lbm/ft	Thread	Grade	Top MD ft	Bottom MD ft	Top TVD ft	Bottom TVD ft
-------------	------------	-------------------	---------	-------	---------------	--------	-------	-----------	--------------	------------	---------------

Tools and Accessories

Type	Size	Qty	Make	Depth	Type	Size	Qty	Make	Depth	Type	Size	Qty	Make
Guide Shoe	9 5/8	1	WTF	2246	Packer					Top Plug	9 5/8	1	HES
Float Shoe					Bridge Plug					Bottom Plug			
Float Collar	9 5/8	1	WTF	2199.7	Retainer					SSR plug set			
Insert Float										Plug Container	9 5/8	1	HES
Stage Tool										Centralizers			

Miscellaneous Materials

Gelling Agt		Conc		Surfactant		Conc		Acid Type		Qty		Conc	%
Treatment Fld		Conc		Inhibitor		Conc		Sand Type		Size		Qty	

Fluid Data

Stage/Plug #: 1													
Fluid #	Stage Type	Fluid Name			Qty	Qty uom	Mixing Density lbm/gal	Yield ft3/sk	Mix Fluid Gal/sk	Rate bbl/min	Total Mix Fluid Gal/sk		

Stage/Plug #: 1													
Fluid #	Stage Type	Fluid Name			Qty	Qty uom	Mixing Density uom	Yield uom	Mix Fluid uom	Rate uom	Total Mix Fluid uom		

Stage/Plug #: 1									
Fluid #	Stage Type	Fluid Name	Qty	Qty uom	Mixing Density lbm/gal	Yield ft ³ /sk	Mix Fluid Gal/sk	Rate bbl/min	Total Mix Fluid Gal/sk
1	Fresh Water Spacer			bbl	8.33	.0	.0	4.0	
2	VersaCem GJ1 Lead Cement	VARICEM (TM) CEMENT (452009)		sacks	12.3	2.38	13.77	8.0	13.77
13.77 Gal		FRESH WATER							
3	VersaCemGJ1 Tail Cement	VARICEM (TM) CEMENT (452009)		sacks	12.8	2.11	11.77	8.0	11.77
11.77 Gal		FRESH WATER							
4	Displacement Fluid			bbl	8.34	.0	.0	10.0	
Calculated Values		Pressures		Volumes					
Displacement	173..1	Shut In: Instant		Lost Returns		Cement Slurry	233.2	Pad	
Top Of Cement	SURFACE	5 Min		Cement Returns	30	Actual Displacement	173.1	Treatment	
Frac Gradient		15 Min		Spacers	20	Load and Breakdown		Total Job	426.3
Rates									
Circulating	RIG	Mixing	8	Displacement	10	Avg. Job	8		
Cement Left In Pipe	Amount	0 ft	Reason	Shoe Joint					
Frac Ring # 1 @	ID	Frac ring # 2 @	ID	Frac Ring # 3 @	ID	Frac Ring # 4 @	ID		
The Information Stated Herein Is Correct				Customer Representative Signature					

The Road to Excellence Starts with Safety

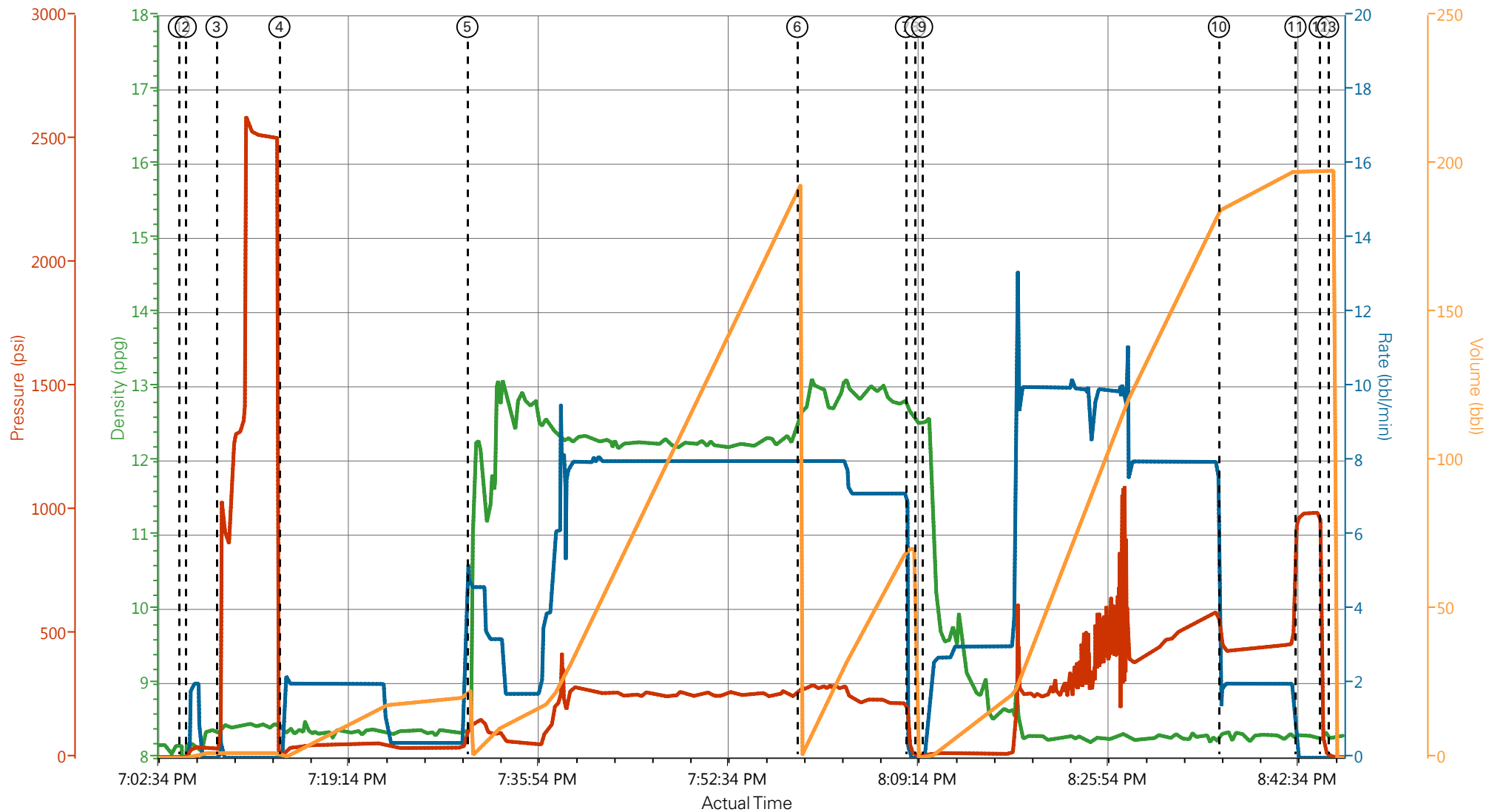
Sold To #: 300721	Ship To #: 3354150	Quote #:	Sales Order #: 901124612
Customer: WPX ENERGY ROCKY MOUNTAIN LLC-EBUS	Customer Rep:		
Well Name: PA	Well #: 42-21	API/UWI #:	
Field: PARACHUTE	City (SAP): PARACHUTE	County/Parish: Garfield	State: Colorado
Legal Description:			
Lat:	Long:		
Contractor: Nabors	Rig/Platform Name/Num: Nabors 573		
Job Purpose: Cement Surface Casing	Ticket Amount:		
Well Type: Development Well	Job Type: Cement Surface Casing		
Sales Person: MAYO, MARK	Srv Supervisor: PONDER, THOMAS	MBU ID Emp #: 427112	

Activity Description	Date/Time	Cht #	Rate bbl/min	Volume bbl		Pressure psig		Comments
				Stage	Total	Tubing	Casing	
Call Out	02/17/2014 07:00							
Crew Leave Yard	02/17/2014 10:30							ALL HES PRESENT FOR PRE-CONVOY SAFETY HUDDLE
Arrive At Loc	02/17/2014 12:30							RIG WAS STILL PULLING DRILL PIPE WHEN THE CREW ARRIVED ON LOCATION
Assessment Of Location Safety Meeting	02/17/2014 17:45							TD- 2256', TP- 2246', SJ- 46.33', MUD- 10.4 PPG, HOLE- 13 1/2", SURFACE CASING- 9 5/8" 32.3# H-40
Rig-Up Equipment	02/17/2014 18:00							1-550 PICKUP, 1-ELITE PUMP, 1-660 CUFT BULK TRUCK, 1-1700 CUFT STORAGE SILO, 2" CIRCULATING IRON, PLUG CONTAINER, QUICK-LATCH
Safety Meeting	02/17/2014 18:45							ALL HES PRESENT, RIG CREW PRESENT, RIG STARTED CIRCULATING ON BOTTOM @ 1745
Start Job	02/17/2014 19:04		2	2			45.0	FILL LINES
Test Lines	02/17/2014 19:08		0.5	0.5			2630.0	GOOD PRESSURE TEST
Activity Description	Date/Time	Cht #	Rate bbl/min	Volume bbl		Pressure psig		Comments
				Stage	Total	Tubing	Casing	

Pump Spacer 1	02/17/2014 19:13		4	20			125.0	FRESH WATER, WHILE BUILDING THE FIRST TUB OF CEMENT THE PONY MOTOR ON THE BULK TRUCK STOPPED WORKING, HAD TO USE THE COMPRESSOR ON THE PUMP TRACTOR
Pump Lead Cement	02/17/2014 19:30		8	167.4			278.0	395 SKS 12.3 PPG 2.38 FT3/SK 13.75 GAL/SK, COULD NOT GET CEMENT TO MIXING TUB BECAUSE IT PACKED OFF THE HOSE TRYING TO GET THE COMPRESSOR ON THE PUMP TRACTOR TO WORK, WHEN WE FINALLY GOT FLOW IT ENDED UP POWDERING OFF THE TUB, SLOWED RATE TO FIX
Pump Tail Cement	02/17/2014 19:58		8	65.8			282.0	175 SKS 12.8 PPG 2.11 FT3/SK 11.75 GAL/SK
Shutdown	02/17/2014 20:08							
Drop Plug	02/17/2014 20:09							PLUG DROP VERIFIED VIA TATTLE TELL BY CUSTOMER REP
Pump Displacement	02/17/2014 20:10		10	163.1			606.0	FRESH WATER, WASHED UP MIXING TUB ON TOP OF PLUG WITH FIRST 10 BBL OF DISPLACEMENT
Slow Rate	02/17/2014 20:35		2	10	173.1		430.0	GOOD CIRCULATION THROUGH OUT THE JOB, 30 BBL CEMENT CIRCULATED TO SURFACE
Bump Plug	02/17/2014 20:42				173.1		479.0	PLUG BUMPED, RIG USED 100 # OF SUGAR
Activity Description	Date/Time	Cht #	Rate bbl/min	Volume bbl		Pressure psig		Comments
				Stage	Total	Tubing	Casing	

Check Floats	02/17/2014 20:44						991.0	FLOATS HELD, 3/4 BBL BACK TO THE DISPLACEMENT TANKS, DUE TO THE ISSUES WE HAD ON THE JOB i DID NOT CHARGE FOR THE 1 ADD HOUR THAT WOULD NOT HAVE HAPPENED HAD THE EQUIPMENT NOT WENT DOWN AT ALL
End Job	02/17/2014 20:45							THANK YOU FOR CHOOSING HALLIBURTON, THOMAS PONDER AND CREW

WPX -PA 42-21 - 9.625 IN SURFACE



DH Density (ppg) 8.28 Comb Pump Rate (bbl/min) 0 PS Pump Press (psi) 3 Pump Stg Tot (bbl) 0

- | | | | | |
|----------------------------|-------------------------------------|---------------------------------|--------------------------------|--------------------------|
| ① Start Job 8.15;0;2;0 | ④ Pump Spacer 1 8.34;0;12;0 | ⑦ Shutdown 12.66;0;67;70.4 | ⑩ Slow Rate 8.33;2;453;185.1 | ⑬ End Job 8.27;0;5;197.8 |
| ② Fill Lines 8.21;0;20;0 | ⑤ Pump Lead Cement 8.37;4.6;135;0.1 | ⑧ Drop Top Plug 12.5;0;8;0 | ⑪ Bump Plug 8.31;0;974;197.8 | |
| ③ Test Lines 8.34;0;37;1.6 | ⑥ Pump Tail Cement 12.65;8;275;0.1 | ⑨ Pump Displacement 12.49;0;8;0 | ⑫ Check Floats 8.28;0;77;197.8 | |

▼ **HALLIBURTON** | iCem® Service

Created: 2014-02-17 18:29:50, Version: 3.0.121

Edit

Customer: WPX ENERGY ROCKY MOUNTAIN LLC-EBUS

Job Date: 2/17/2014 6:34:49 PM

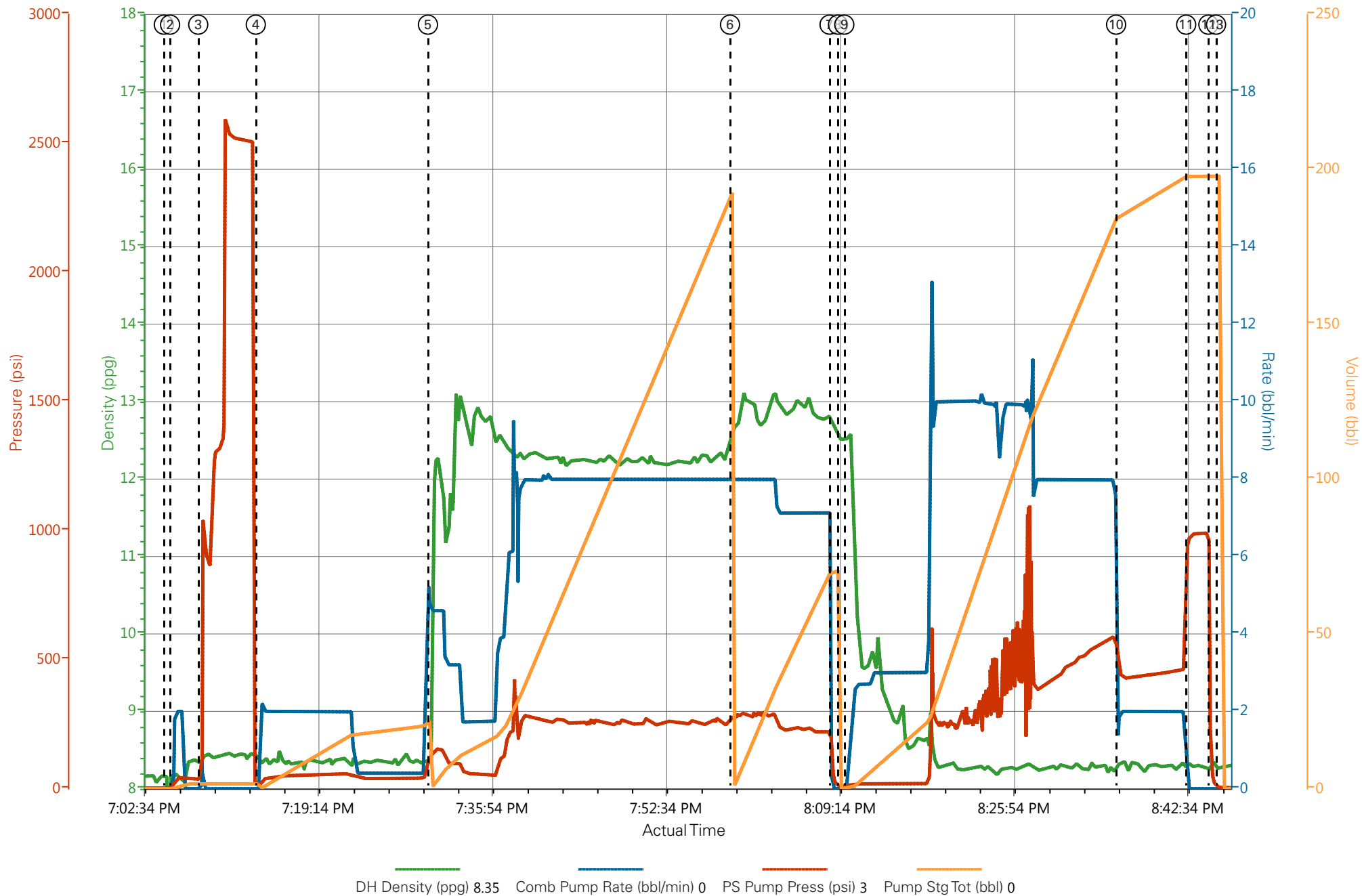
Well: PA 42-21

Representative: BEAUDE OAKS

Sales Order #: 901124612

ELITE #2: ROGER LAULAINEN / THOMAS PONDER

WPX -PA 42-21 - 9.625 IN SURFACE



HALLIBURTON

Company:	<u>WPX</u>	Date:	<u>2/17/2014</u>
Submitted by:	<u>THOMAS PONDER</u>	Date Rec.:	<u>2/17/2014</u>
Attention:	<u>LARRY COOKSEY</u>	S.O.#	<u>901124612</u>
Lease	<u>PA</u>	Job Type:	<u>SURFACE</u>
Well #	<u>42-21</u>		

Specific Gravity	<i>MAX</i>	<i>1</i>
pH	<i>8</i>	<i>7</i>
Potassium (K)	<i>5000</i>	<i>250</i> Mg / L
Calcium (Ca)	<i>500</i>	<i>120</i> Mg / L
Iron (FE2)	<i>300</i>	<i>0</i> Mg / L
Chlorides (Cl)	<i>3000</i>	<i>0</i> Mg / L
Sulfates (SO ₄)	<i>1500</i>	<i>0</i> Mg / L
Carbonates hardness		
Temp	<i>40-80</i>	<i>65</i> Deg
Total Dissolved Solids		<i>185</i> Mg / L

Respectfully: THOMAS PONDER

Title: CEMENTING SUPERVISOR

Location: GRAND JCT, CO

Sales Order #: 901124612	Line Item: 10	Survey Conducted Date: 2/17/2014
Customer: WPX ENERGY ROCKY MOUNTAIN LLC-EBUS		Job Type (BOM): CMT SURFACE CASING BOM
Customer Representative: BEAUDE OAKS		API / UWI: (leave blank if unknown) AFEYS41AQNKAAALB1AAA
Well Name: PA		Well Number: 42-21
Well Type: Development Well	Well Country: United States of America	
H2S Present:	Well State: Colorado	Well County: Garfield

Dear Customer,

We hope that you were satisfied with the service quality of this job performed by Halliburton. It is the aim of our management and service personnel to deliver equipment and service of a standard unmatched in the service sector of the energy industry.

Please take the time to let us know if our performance met with your satisfaction. Please be as critical as possible to ensure we constantly improve our service. Your comments are of great value to us and are intended for the exclusive use of Halliburton.

CUSTOMER SATISFACTION SURVEY

CATEGORY	CUSTOMER SATISFACTION RESPONSE	
Survey Conducted Date	The date the survey was conducted	2/17/2014
Survey Interviewer	The survey interviewer is the person who initiated the survey.	THOMAS PONDER (HX41187)
Customer Participation	Did the customer participate in this survey? (Y/N)	Yes
Customer Representative	Enter the Customer representative name	BEAUDE OAKS
HSE	Was our HSE performance satisfactory? Circle Y or N	Yes
Equipment	Were you satisfied with our Equipment? Circle Y or N	Yes
Personnel	Were you satisfied with our people? Circle Y or N	Yes
Customer Comment	Customer's Comment	

CUSTOMER SIGNATURE

Sales Order #: 901124612	Line Item: 10	Survey Conducted Date: 2/17/2014
Customer: WPX ENERGY ROCKY MOUNTAIN LLC-EBUS		Job Type (BOM): CMT SURFACE CASING BOM
Customer Representative: BEAUDE OAKS		API / UWI: (leave blank if unknown) AFEYS41AQNKAALB1AAA
Well Name: PA		Well Number: 42-21
Well Type: Development Well	Well Country: United States of America	
H2S Present:	Well State: Colorado	Well County: Garfield

KEY PERFORMANCE INDICATORS

General	
Survey Conducted Date The date the survey was conducted	2/17/2014

Cementing KPI Survey	
Type of Job Select the type of job. (Cementing or Non-Cementing)	0
Select the Maximum Deviation range for this Job What is the highest deviation for the job you just completed? This may not be the maximum well deviation.	Vertical
Total Operating Time (hours) Total Operating Hours Including Rig-up, Pumping, Rig-down. Enter in decimal format.	2
HSE Incident, Accident, Injury HSE Incident, Accident, Injury. This should be recordable incidents only.	No
Was the job purpose achieved? Was the job delivered correctly as per customer agreed design?	Yes
Operating Hours (Pumping Hours) Total number of hours pumping fluid on this job. Enter in decimal format.	1
Customer Non-Productive Rig Time (hrs) Lost time due to Halliburton in the start, execution, or completion of an ordered service or product, or delays in a follow-on service. Enter in decimal format. 0 if none.	0
Type of Rig Classification Job Was Performed Type Of Rig (classification) Job Was Performed On	Drilling Rig (Portable)
Number Of JSAs Performed Number Of Jsas Performed	6
Number of Unplanned Shutdowns Unplanned shutdown is when injection stops for any period of time.	0
Was this a Primary Cement Job (Yes / No)	Yes

Sales Order #: 901124612	Line Item: 10	Survey Conducted Date: 2/17/2014
Customer: WPX ENERGY ROCKY MOUNTAIN LLC-EBUS		Job Type (BOM): CMT SURFACE CASING BOM
Customer Representative: BEAUDE OAKS		API / UWI: (leave blank if unknown) AFEYS41AQNKAAALB1AAA
Well Name: PA		Well Number: 42-21
Well Type: Development Well	Well Country: United States of America	
H2S Present:	Well State: Colorado	Well County: Garfield

Primary Cement Job= Casing job, Liner job, or Tie-back job.	
Did We Run Wiper Plugs? Did We Run Top And Bottom Casing Wiper Plugs?	Top
Mixing Density of Job Stayed in Designed Density Range (0-100%) Density Range defined as +/- .20 ppg. Calculation: Total BBLs cement mixed at designed density divided by total BBLs of cement multiplied by 100	95
Was Automated Density Control Used? Was Automated Density Control (ADC) Used ?	Yes
Pump Rate (percent) of Job Stayed At Designed Pump Rate Pump Rate range defined as +/- 1bbl/min. Calculation: Total BBLs of fluid pumped at the designed rate divided by Total BBLs of fluid pumped, multiplied by 100	95
Nbr of Remedial Sqz Jobs Rqd - Competition Number Of Remedial Squeeze Jobs Required After Primary Job Performed By Competition	0
Nbr of Remedial Plug Jobs Rqd - HES Number Of Remedial Plug Jobs Needed After Primary Plug Pumped By HES	0
Nbr of Remedial Sqz Jobs Rqd - HES Number Of Remedial Squeeze Jobs Required After Primary Job Performed By HES	0