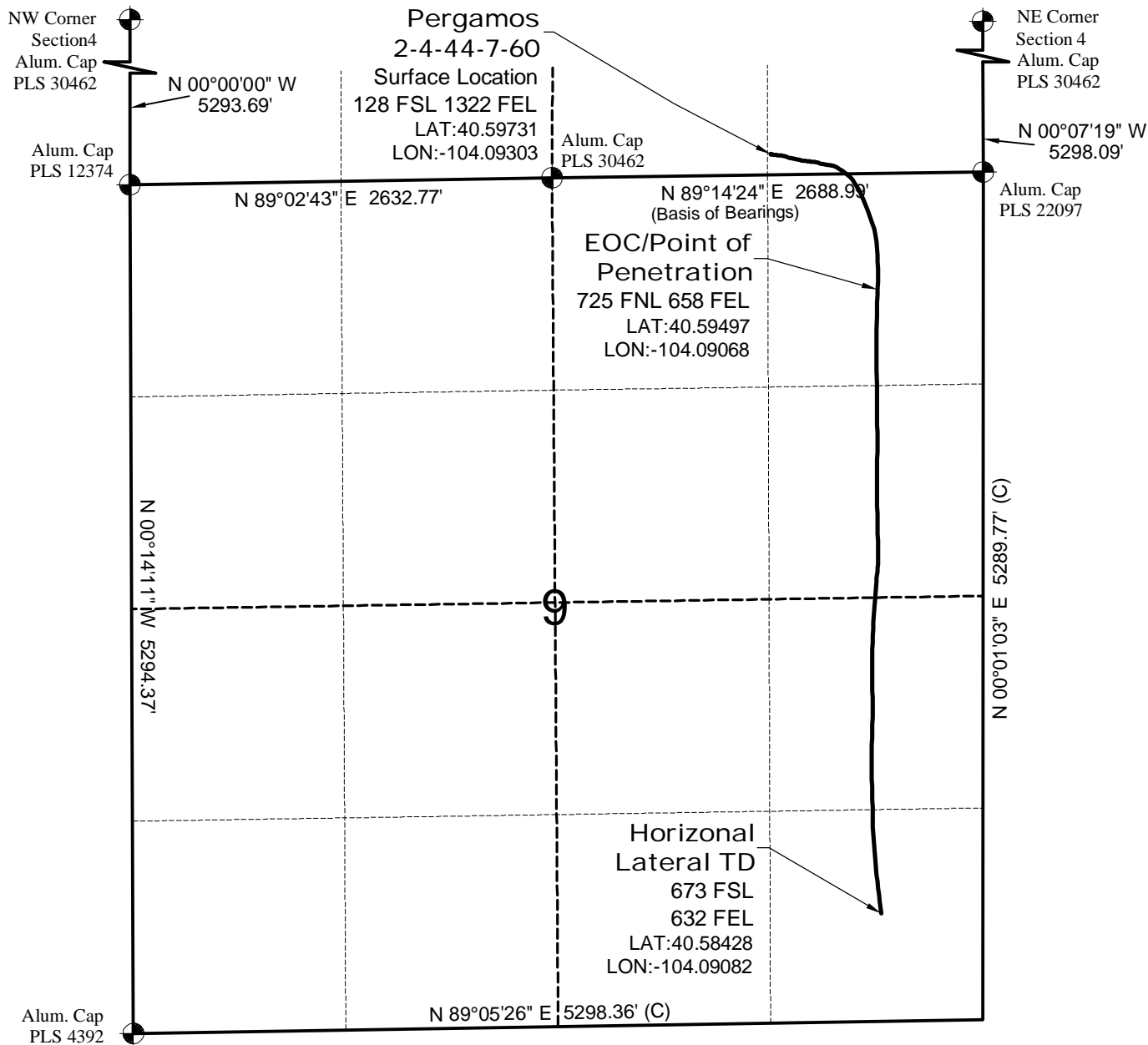


AS-DRILLED MAP

**PERGAMOS
4-44-7-60 PAD**

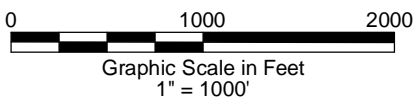


SURVEYOR'S STATEMENT

The undersigned hereby states that the as-drilled lateral as shown hereon was plotted from the directional survey report prepared by Precision Directional Services (See Note 2).

NOTES

- 1.) Refer to well location map on record at COGCC.
- 2.) Directional data provided by Precision Directional Services.
Report Date: 7/6/12 Created by: Shane Nelson
- 3.) Distances to nearest section lines are measured perpendicularly.
- 4.) Date of Wellhead As-built 8/3/12; Date of Drawing 8/6/12. REV 0
PDOP Reading: 2.3 Instrument Operator: Marc Woodard



GEO SURV
LAND SURVEYING AND MAPPING
LAFAYETTE - WINTER PARK
Ph 303 666 0379 Fx 303 665 6320

CARRIZO OIL & GAS, INC
PERGAMOS 2-4-44-7-60

SL SE1/4 SE1/4 SEC.4 T7N R60W
HL TD SE1/4 SE1/4 SEC.9 T7N R60W
6th PM WELD COUNTY COLORADO