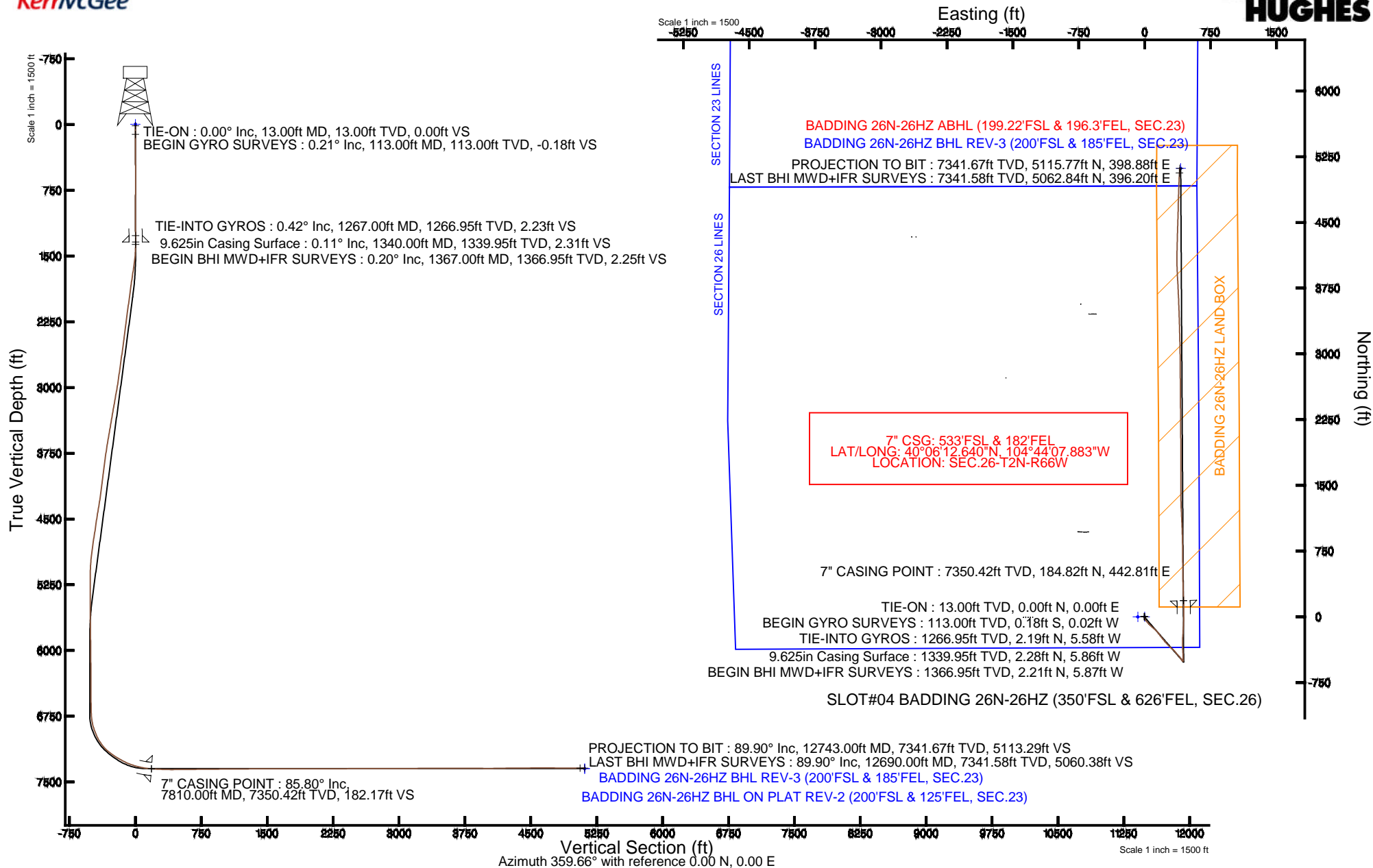


KERR-MCGEE OIL & GAS ONSHORE LP

Location: COLORADO Slot: SLOT#04 BADDING 26N-26HZ (350'FSL & 626'FEL, SEC.26)
 Field: WELD COUNTY (KERR MCGEE) Well: BADDING 26N-26HZ
 Facility: SEC.26-T2N-R66W Wellbore: BADDING 26N-26HZ PWB

Plot reference wellpath is BADDING 26N-26HZ (REV-A.0) PWP

True vertical depths are referenced to ENSIGN 138 (13'KB) (RKB)	Grid System: NAD83 / Lambert Colorado SP, Northern Zone (501), US feet
Measured depths are referenced to ENSIGN 138 (13'KB) (RKB)	North Reference: True north
ENSGN 138 (13'KB) (RKB) to Mean Sea Level: 5128 feet	Scale: True distance
Mean Sea Level to Mud line (At Slot: SLOT#04 BADDING 26N-26HZ (350'FSL & 626'FEL, SEC.26)): 0 feet	Depths are in feet
Coordinates are in feet referenced to Slot	Created by: wilsje02 on 4/17/2014





Actual Wellpath Report

BADDING 26N-26HZ AWP

Page 1 of 6



REFERENCE WELLPATH IDENTIFICATION

Operator	KERR-MCGEE OIL & GAS ONSHORE LP	Slot	SLOT#04 BADDING 26N-26HZ (350'FSL & 626'FEL, SEC.26)
Area	COLORADO	Well	BADDING 26N-26HZ
Field	WELD COUNTY (KERR MCGEE)	Wellbore	BADDING 26N-26HZ AWB
Facility	SEC.26-T2N-R66W		

REPORT SETUP INFORMATION

Projection System	NAD83 / Lambert Colorado SP, Northern Zone (501), US feet	Software System	WellArchitect® 4.0.0
North Reference	True	User	Wilsjef02
Scale	0.99996	Report Generated	4/17/2014 at 11:10:12 AM
Convergence at slot	n/a	Database/Source file	WellArchitectDB/BADDING_26N-26HZ_AWB.xml

WELLPATH LOCATION

	Local coordinates		Grid coordinates		Geographic coordinates	
	North[ft]	East[ft]	Easting[US ft]	Northing[US ft]	Latitude	Longitude
Slot Location	0.30	78.09	3213402.02	1281286.65	40°06'10.814"N	104°44'13.582"W
Facility Reference Pt			3213323.93	1281285.67	40°06'10.811"N	104°44'14.587"W
Field Reference Pt			3197771.84	1268891.29	40°04'09.600"N	104°47'36.000"W

WELLPATH DATUM

Calculation method	Minimum curvature	ENSIGN 138 (13'KB) (RKB) to Facility Vertical Datum	5128.00ft
Horizontal Reference Pt	Slot	ENSIGN 138 (13'KB) (RKB) to Mean Sea Level	5128.00ft
Vertical Reference Pt	ENSIGN 138 (13'KB) (RKB)	ENSIGN 138 (13'KB) (RKB) to Mud Line at Slot (SLOT#04 BADDING 26N-26HZ (350'FSL & 626'FEL, SEC.26))	5128.00ft
MD Reference Pt	ENSIGN 138 (13'KB) (RKB)	Section Origin	N 0.00, E 0.00 ft
Field Vertical Reference	Mean Sea Level	Section Azimuth	359.66°

Actual Wellpath Report

BADDING 26N-26HZ AWP

Page 2 of 6

REFERENCE WELLPATH IDENTIFICATION			
Operator	KERR-MCGEE OIL & GAS ONSHORE LP	Slot	SLOT#04 BADDING 26N-26HZ (350'FSL & 626'FEL, SEC.26)
Area	COLORADO	Well	BADDING 26N-26HZ
Field	WELD COUNTY (KERR MCGEE)	Wellbore	BADDING 26N-26HZ AWB
Facility	SEC.26-T2N-R66W		

WELLPATH DATA (97 stations) † = interpolated/extrapolated station										
MD [ft]	Inclination [°]	Azimuth [°]	TVD [ft]	Vert Sect [ft]	North [ft]	East [ft]	Latitude	Longitude	DLS [°/100ft]	Comments
0.00†	0.000	185.320	0.00	0.00	0.00	0.00	40°06'10.814"N	104°44'13.582"W	0.00	
13.00	0.000	185.320	13.00	0.00	0.00	0.00	40°06'10.814"N	104°44'13.582"W	0.00	TIE-ON
113.00	0.210	185.320	113.00	-0.18	-0.18	-0.02	40°06'10.812"N	104°44'13.582"W	0.21	BEGIN GYRO SURVEYS
213.00	0.360	69.160	213.00	-0.25	-0.25	0.26	40°06'10.811"N	104°44'13.579"W	0.49	
313.00	0.640	2.240	313.00	0.41	0.42	0.58	40°06'10.818"N	104°44'13.575"W	0.60	
413.00	0.900	308.020	412.99	1.46	1.46	-0.02	40°06'10.828"N	104°44'13.582"W	0.74	
513.00	0.940	282.310	512.98	2.13	2.12	-1.44	40°06'10.835"N	104°44'13.601"W	0.41	
613.00	0.520	259.930	612.97	2.23	2.21	-2.69	40°06'10.836"N	104°44'13.617"W	0.50	
713.00	0.480	258.130	712.96	2.07	2.05	-3.55	40°06'10.834"N	104°44'13.628"W	0.04	
813.00	0.340	248.170	812.96	1.88	1.85	-4.23	40°06'10.832"N	104°44'13.636"W	0.16	
913.00	0.240	239.110	912.96	1.66	1.63	-4.69	40°06'10.830"N	104°44'13.642"W	0.11	
1013.00	0.150	253.670	1012.96	1.52	1.49	-4.99	40°06'10.829"N	104°44'13.646"W	0.10	
1113.00	0.150	119.580	1112.96	1.42	1.39	-5.00	40°06'10.828"N	104°44'13.646"W	0.28	
1213.00	0.690	325.760	1212.96	1.85	1.82	-5.23	40°06'10.832"N	104°44'13.649"W	0.83	
1267.00	0.420	301.640	1266.95	2.23	2.19	-5.58	40°06'10.836"N	104°44'13.654"W	0.65	TIE-INTO GYROS
1367.00	0.200	171.600	1366.95	2.25	2.21	-5.87	40°06'10.836"N	104°44'13.658"W	0.57	BEGIN BHI MWD+IFR SURVEYS
1461.00	3.500	158.900	1460.89	-0.60	-0.63	-4.81	40°06'10.808"N	104°44'13.644"W	3.52	
1552.00	7.300	165.200	1551.47	-8.80	-8.81	-2.33	40°06'10.727"N	104°44'13.612"W	4.22	
1643.00	8.900	160.100	1641.56	-21.03	-21.02	1.54	40°06'10.606"N	104°44'13.562"W	1.93	
1734.00	10.000	151.600	1731.33	-34.64	-34.59	7.70	40°06'10.472"N	104°44'13.483"W	1.95	
1825.00	10.100	139.200	1820.94	-47.68	-47.58	16.67	40°06'10.344"N	104°44'13.368"W	2.38	
1916.00	10.400	137.800	1910.49	-59.87	-59.71	27.40	40°06'10.224"N	104°44'13.229"W	0.43	
2097.00	10.000	137.300	2088.63	-83.65	-83.36	49.03	40°06'09.990"N	104°44'12.951"W	0.23	
2279.00	11.000	132.400	2267.59	-107.12	-106.68	72.57	40°06'09.760"N	104°44'12.648"W	0.74	
2462.00	10.700	128.500	2447.32	-129.62	-129.03	98.76	40°06'09.539"N	104°44'12.311"W	0.43	
2553.00	12.000	130.800	2536.53	-141.14	-140.47	112.53	40°06'09.426"N	104°44'12.134"W	1.51	
2645.00	11.600	138.000	2626.60	-154.35	-153.60	125.96	40°06'09.296"N	104°44'11.961"W	1.66	
2829.00	9.900	136.600	2807.36	-179.73	-178.84	149.21	40°06'09.047"N	104°44'11.662"W	0.93	
2919.00	9.700	144.100	2896.05	-191.55	-190.60	158.97	40°06'08.930"N	104°44'11.536"W	1.43	
3011.00	11.700	145.700	2986.45	-205.59	-204.59	168.77	40°06'08.792"N	104°44'11.410"W	2.20	
3103.00	12.400	143.300	3076.42	-221.29	-220.21	179.93	40°06'08.638"N	104°44'11.266"W	0.94	
3288.00	12.700	140.300	3257.00	-253.01	-251.79	204.79	40°06'08.326"N	104°44'10.947"W	0.39	
3478.00	12.600	139.700	3442.39	-285.04	-283.66	231.54	40°06'08.011"N	104°44'10.602"W	0.09	
3668.00	12.900	136.300	3627.71	-316.35	-314.80	259.60	40°06'07.703"N	104°44'10.241"W	0.43	
3857.00	10.900	134.000	3812.64	-344.18	-342.47	287.03	40°06'07.430"N	104°44'09.888"W	1.09	
4045.00	10.300	130.800	3997.43	-367.66	-365.80	312.54	40°06'07.199"N	104°44'09.560"W	0.45	
4141.00	10.200	132.000	4091.90	-379.03	-377.09	325.35	40°06'07.087"N	104°44'09.395"W	0.25	
4329.00	11.200	140.200	4276.64	-404.35	-402.26	349.41	40°06'06.839"N	104°44'09.085"W	0.97	
4518.00	12.400	140.000	4461.64	-434.14	-431.91	374.21	40°06'06.546"N	104°44'08.766"W	0.64	
4612.00	10.500	136.600	4553.77	-448.17	-445.87	386.58	40°06'06.408"N	104°44'08.607"W	2.14	
4707.00	11.400	143.800	4647.04	-462.11	-459.73	398.07	40°06'06.271"N	104°44'08.459"W	1.72	
4801.00	10.400	142.700	4739.34	-476.42	-473.98	408.70	40°06'06.130"N	104°44'08.323"W	1.09	
4896.00	9.100	142.100	4832.97	-489.22	-486.73	418.51	40°06'06.004"N	104°44'08.196"W	1.37	
4991.00	7.700	152.000	4926.95	-500.82	-498.28	426.12	40°06'05.890"N	104°44'08.098"W	2.11	
5085.00	4.600	144.600	5020.40	-509.48	-506.91	431.26	40°06'05.805"N	104°44'08.032"W	3.40	

Actual Wellpath Report

BADDING 26N-26HZ AWP

Page 3 of 6

REFERENCE WELLPATH IDENTIFICATION

Operator	KERR-MCGEE OIL & GAS ONSHORE LP	Slot	SLOT#04 BADDING 26N-26HZ (350'FSL & 626'FEL, SEC.26)
Area	COLORADO	Well	BADDING 26N-26HZ
Field	WELD COUNTY (KERR MCGEE)	Wellbore	BADDING 26N-26HZ AWB
Facility	SEC.26-T2N-R66W		

WELLPATH DATA (97 stations) † = interpolated/extrapolated station

MD [ft]	Inclination [°]	Azimuth [°]	TVD [ft]	Vert Sect [ft]	North [ft]	East [ft]	Latitude	Longitude	DLS [°/100ft]	Comments
5179.00	1.700	127.500	5114.25	-513.43	-510.83	434.55	40°06'05.766"N	104°44'07.990"W	3.21	
5274.00	0.600	246.400	5209.24	-514.49	-511.89	435.21	40°06'05.755"N	104°44'07.981"W	2.17	
5747.00	0.800	10.300	5682.22	-512.22	-509.63	433.53	40°06'05.778"N	104°44'08.003"W	0.26	
6219.00	0.400	357.700	6154.19	-507.33	-504.74	434.05	40°06'05.826"N	104°44'07.996"W	0.09	
6598.00	0.800	79.000	6533.18	-505.52	-502.92	436.60	40°06'05.844"N	104°44'07.964"W	0.22	
6692.00	1.700	308.800	6627.16	-504.52	-501.92	436.16	40°06'05.854"N	104°44'07.969"W	2.45	
6788.00	2.200	342.600	6723.11	-501.86	-499.27	434.50	40°06'05.880"N	104°44'07.991"W	1.28	
6835.00	6.500	0.600	6769.97	-498.34	-495.75	434.25	40°06'05.915"N	104°44'07.994"W	9.49	
6882.00	10.800	10.700	6816.42	-491.35	-488.76	435.10	40°06'05.984"N	104°44'07.983"W	9.67	
6976.00	18.800	2.100	6907.24	-467.53	-464.92	437.29	40°06'06.220"N	104°44'07.955"W	8.80	
7071.00	26.800	357.500	6994.75	-430.78	-428.17	436.92	40°06'06.583"N	104°44'07.959"W	8.62	
7166.00	36.800	354.800	7075.39	-380.89	-378.31	433.40	40°06'07.075"N	104°44'08.005"W	10.63	
7260.00	48.300	0.100	7144.55	-317.52	-314.94	430.90	40°06'07.702"N	104°44'08.037"W	12.81	
7356.00	57.900	3.400	7202.13	-240.91	-238.32	433.38	40°06'08.459"N	104°44'08.005"W	10.37	
7451.00	60.500	3.200	7250.77	-159.48	-156.86	438.07	40°06'09.264"N	104°44'07.944"W	2.74	
7546.00	67.900	2.600	7292.09	-74.15	-71.50	442.38	40°06'10.107"N	104°44'07.889"W	7.81	
7593.00	71.800	1.900	7308.28	-30.08	-27.42	444.11	40°06'10.543"N	104°44'07.867"W	8.41	
7641.00	74.700	0.600	7322.11	15.86	18.53	445.11	40°06'10.997"N	104°44'07.854"W	6.57	
7688.00	77.700	359.700	7333.32	61.50	64.16	445.23	40°06'11.448"N	104°44'07.852"W	6.65	
7735.00	80.900	359.200	7342.05	107.67	110.34	444.78	40°06'11.904"N	104°44'07.858"W	6.89	
7772.00	83.800	358.500	7346.97	144.34	147.00	444.05	40°06'12.267"N	104°44'07.868"W	8.06	
7810.00†	85.800	357.766	7350.42	182.17	184.82	442.81	40°06'12.640"N	104°44'07.883"W	5.60	7" CASING POINT
7829.00	86.800	357.400	7351.64	201.11	203.76	442.01	40°06'12.828"N	104°44'07.894"W	5.60	
7892.00	87.500	358.200	7354.77	264.00	266.64	439.60	40°06'13.449"N	104°44'07.925"W	1.69	
7985.00	88.600	358.400	7357.94	356.92	359.54	436.84	40°06'14.367"N	104°44'07.960"W	1.20	
8080.00	90.800	359.400	7358.44	451.90	454.52	435.02	40°06'15.306"N	104°44'07.984"W	2.54	
8174.00	90.400	359.400	7357.45	545.90	548.51	434.03	40°06'16.234"N	104°44'07.996"W	0.43	
8269.00	90.600	359.700	7356.62	640.89	643.50	433.29	40°06'17.173"N	104°44'08.006"W	0.38	
8363.00	90.600	359.300	7355.64	734.89	737.49	432.47	40°06'18.102"N	104°44'08.016"W	0.43	
8552.00	90.500	358.500	7353.82	923.86	926.44	428.84	40°06'19.969"N	104°44'08.063"W	0.43	
8836.00	90.400	356.900	7351.59	1207.68	1210.20	417.44	40°06'22.773"N	104°44'08.210"W	0.56	
8930.00	90.400	358.400	7350.94	1301.61	1304.11	413.59	40°06'23.701"N	104°44'08.259"W	1.60	
9120.00	90.000	0.400	7350.27	1491.60	1494.09	411.60	40°06'25.579"N	104°44'08.285"W	1.07	
9404.00	90.000	359.700	7350.27	1775.59	1778.09	411.85	40°06'28.385"N	104°44'08.282"W	0.25	
9686.00	90.200	359.900	7349.78	2057.59	2060.09	410.86	40°06'31.172"N	104°44'08.294"W	0.10	
9970.00	90.200	359.300	7348.79	2341.59	2344.08	408.88	40°06'33.978"N	104°44'08.320"W	0.21	
10254.00	90.100	359.700	7348.05	2625.59	2628.07	406.40	40°06'36.785"N	104°44'08.351"W	0.15	
10538.00	90.300	359.500	7347.06	2909.58	2912.06	404.42	40°06'39.591"N	104°44'08.377"W	0.10	
10822.00	90.100	358.600	7346.06	3193.56	3196.01	399.71	40°06'42.397"N	104°44'08.437"W	0.32	
11107.00	90.200	358.100	7345.32	3478.49	3480.89	391.50	40°06'45.213"N	104°44'08.543"W	0.18	
11486.00	89.900	356.800	7344.99	3857.20	3859.51	374.64	40°06'48.954"N	104°44'08.760"W	0.35	
11580.00	89.000	357.500	7345.89	3951.10	3953.39	369.97	40°06'49.882"N	104°44'08.820"W	1.21	
11675.00	90.500	0.100	7346.30	4046.08	4048.35	367.98	40°06'50.820"N	104°44'08.846"W	3.16	
11771.00	91.100	0.300	7344.96	4142.06	4144.34	368.31	40°06'51.769"N	104°44'08.841"W	0.66	
11865.00	91.000	1.500	7343.24	4236.02	4238.31	369.79	40°06'52.698"N	104°44'08.822"W	1.28	

Actual Wellpath Report

BADDING 26N-26HZ AWP

Page 4 of 6

REFERENCE WELLPATH IDENTIFICATION

Operator	KERR-MCGEE OIL & GAS ONSHORE LP	Slot	SLOT#04 BADDING 26N-26HZ (350'FSL & 626'FEL, SEC.26)
Area	COLORADO	Well	BADDING 26N-26HZ
Field	WELD COUNTY (KERR MCGEE)	Wellbore	BADDING 26N-26HZ AWB
Facility	SEC.26-T2N-R66W		

WELLPATH DATA (97 stations)

MD [ft]	Inclination [°]	Azimuth [°]	TVD [ft]	Vert Sect [ft]	North [ft]	East [ft]	Latitude	Longitude	DLS [°/100ft]	Comments
11959.00	90.100	1.500	7342.34	4329.97	4332.28	372.25	40°06'53.626"N	104°44'08.791"W	0.96	
12148.00	91.000	2.000	7340.52	4518.83	4521.18	378.02	40°06'55.493"N	104°44'08.716"W	0.54	
12242.00	90.000	1.300	7339.70	4612.77	4615.13	380.73	40°06'56.421"N	104°44'08.681"W	1.30	
12337.00	89.300	1.400	7340.28	4707.73	4710.10	382.97	40°06'57.360"N	104°44'08.653"W	0.74	
12526.00	90.000	2.200	7341.44	4896.59	4899.00	388.90	40°06'59.227"N	104°44'08.576"W	0.56	
12690.00	89.900	2.900	7341.58	5060.38	5062.84	396.20	40°07'00.846"N	104°44'08.482"W	0.43	LAST BHI MWD+IFR SURVEYS
12743.00	89.900	2.900	7341.67	5113.29	5115.77	398.88	40°07'01.369"N	104°44'08.448"W	0.00	PROJECTION TO BIT

HOLE & CASING SECTIONS - Ref Wellbore: BADDING 26N-26HZ AWB Ref Wellpath: BADDING 26N-26HZ AWP

String/Diameter	Start MD [ft]	End MD [ft]	Interval [ft]	Start TVD [ft]	End TVD [ft]	Start N/S [ft]	Start E/W [ft]	End N/S [ft]	End E/W [ft]
13.5in Open Hole	13.00	1340.00	1327.00	13.00	1339.95	0.00	0.00	2.28	-5.86
9.625in Casing Surface	13.00	1340.00	1327.00	13.00	1339.95	0.00	0.00	2.28	-5.86
8.75in Open Hole	1340.00	7820.00	6480.00	1339.95	7351.10	2.28	-5.86	194.79	442.41
7in Casing Intermediate	13.00	7810.00	7797.00	13.00	7350.42	0.00	0.00	184.82	442.81
6.125in Open Hole	7810.00	12743.00	4933.00	7350.42	7341.67	184.82	442.81	5115.77	398.88



Actual Wellpath Report

BADDING 26N-26HZ AWP

Page 5 of 6



REFERENCE WELLPATH IDENTIFICATION			
Operator	KERR-MCGEE OIL & GAS ONSHORE LP	Slot	SLOT#04 BADDING 26N-26HZ (350'FSL & 626'FEL, SEC.26)
Area	COLORADO	Well	BADDING 26N-26HZ
Field	WELD COUNTY (KERR MCGEE)	Wellbore	BADDING 26N-26HZ AWB
Facility	SEC.26-T2N-R66W		

TARGETS									
Name	MD [ft]	TVD [ft]	North [ft]	East [ft]	Grid East [US ft]	Grid North [US ft]	Latitude	Longitude	Shape
BADDING SECTION 26 LINES		-4.00	-0.30	-78.02	3213324.01	1281285.67	40°06'10.811"N	104°44'14.586"W	polygon
SECTION 23 LINES		13.00	9904.14	-277.61	3213039.23	1291187.62	40°07'48.688"N	104°44'17.156"W	polygon
BADDING 26N-26HZ BHL ON PLAT REV-2 (200'FSL & 125'FEL, SEC.23)		7348.00	5116.55	470.18	3213828.15	1286406.84	40°07'01.376"N	104°44'07.530"W	point
BADDING 26N-26HZ BHL REV-3 (200'FSL & 185'FEL, SEC.23)		7348.00	5116.55	410.18	3213768.15	1286406.32	40°07'01.376"N	104°44'08.302"W	point
BADDING 26N-26HZ BHL ON PLAT REV-1 (200'FSL & 125'FEL, SEC.23)		7354.00	5116.55	470.18	3213828.15	1286406.84	40°07'01.376"N	104°44'07.530"W	point
BADDING 26N-26HZ LAND BOX		7396.00	0.00	0.00	3213402.02	1281286.65	40°06'10.814"N	104°44'13.582"W	polygon

WELLPATH COMPOSITION - Ref Wellbore: BADDING 26N-26HZ AWB Ref Wellpath: BADDING 26N-26HZ AWP				
Start MD [ft]	End MD [ft]	Positional Uncertainty Model	Log Name/Comment	Wellbore
13.00	1267.00	Generic gyro - continuous (Standard)	MS ENERGY SERVICES GYRO SURVEYS <113-1267>	BADDING 26N-26HZ AWB
1267.00	7772.00	NaviTrak (MAGCORR,IFR)	BHI MWD+IFR SURVEYS 8 3/4" HOLE <1367-7772>	BADDING 26N-26HZ AWB
7772.00	12690.00	NaviTrak (MAGCORR,IFR)	BHI MWD+IFR SURVEYS 6 1/8" HOLE <7829-12690>	BADDING 26N-26HZ AWB
12690.00	12743.00	Blind Drilling (std)	Projection to bit	BADDING 26N-26HZ AWB



Actual Wellpath Report

BADDING 26N-26HZ AWP

Page 6 of 6



REFERENCE WELLPATH IDENTIFICATION

Operator	KERR-MCGEE OIL & GAS ONSHORE LP	Slot	SLOT#04 BADDING 26N-26HZ (350'FSL & 626'FEL, SEC.26)
Area	COLORADO	Well	BADDING 26N-26HZ
Field	WELD COUNTY (KERR MCGEE)	Wellbore	BADDING 26N-26HZ AWB
Facility	SEC.26-T2N-R66W		

WELLPATH COMMENTS

MD [ft]	Inclination [°]	Azimuth [°]	TVD [ft]	Comment
13.00	0.000	185.320	13.00	TIE-ON
113.00	0.210	185.320	113.00	BEGIN GYRO SURVEYS
1267.00	0.420	301.640	1266.95	TIE-INTO GYROS
1367.00	0.200	171.600	1366.95	BEGIN BHI MWD+IFR SURVEYS
7810.00	85.800	357.766	7350.42	7" CASING POINT
12690.00	89.900	2.900	7341.58	LAST BHI MWD+IFR SURVEYS
12743.00	89.900	2.900	7341.67	PROJECTION TO BIT