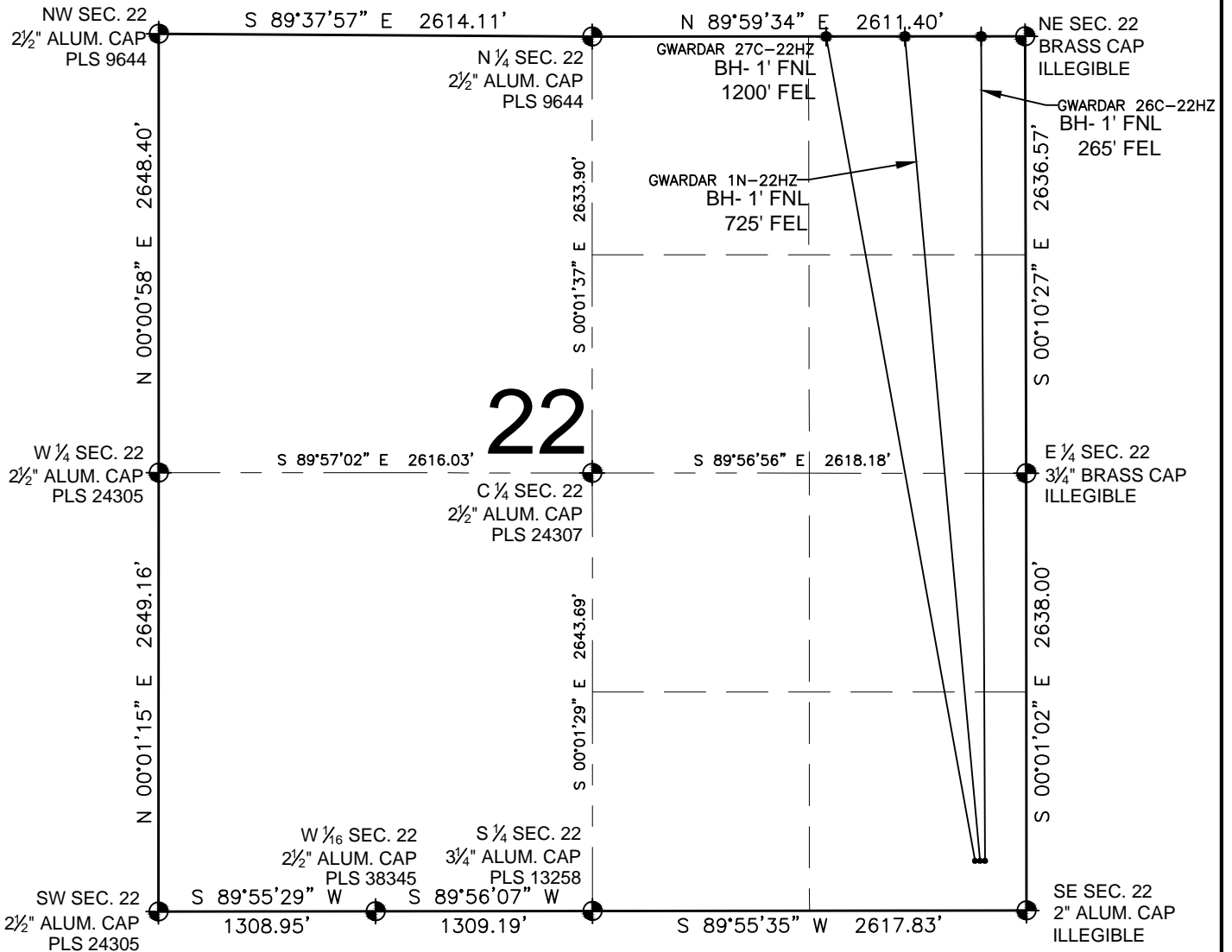


WARDAR 1N-22HZ MULTI-WELL PLAN

SECTION 22, TOWNSHIP 2 NORTH, RANGE 67 WEST, 6TH P.M.



LEGEND

- ⊙ = EXISTING MONUMENT
- = PROPOSED WELL
- ⊕ = BOTTOM HOLE
- ◆ = EXISTING WELL
- BH = BOTTOM HOLE

NOTES:

WARDAR 27C-22HZ TO BE AT 300' FSL, 310' FEL.
 BOTTOM HOLE AT 1' FNL & 1200' FEL
 WARDAR 1N-22HZ TO BE AT 300' FSL, 280' FEL.
 BOTTOM HOLE AT 1' FNL & 725' FEL
 WARDAR 26C-22HZ TO BE AT 300' FSL, 250' FEL.
 BOTTOM HOLE AT 1' FNL & 265' FEL

PREPARED BY:

PFS Petroleum Field Services, LLC
 1801 W. 13th Ave.
 Denver, CO 80204

KERR-MCGEE OIL & GAS ONSHORE LP

FIELD DATE:
07-18-13
DRAWING DATE:
07-26-13

SURFACE LOCATION:
SE 1/4 SE 1/4, SEC. 22, T2N, R67W, 6TH P.M.
WELD COUNTY, COLORADO

